



Philips
Speaker System

3800W
NX

NTX800MU

The ultimate sound tower

Twin sound towers built for partying turn you into a DJ everywhere. Built-in crossfader, headphones socket for two sources and Flip button for instant mixing, plus 3800W of power and Bluetooth connection will bring every party to life.

Designed to party

- 260K LED lights for great party atmosphere
- DJ Crossfader for mixing your tracks
- Auto-DJ for automatic mixing of tracks on USB drive
- Handles and wheels for easy transportation

Engineered for powerful sound

- NX bass button for instant sound boost & light effects
- 5-band equalizer provides a personal music experience

Enjoy your music from multiple sources

- Stream music via Bluetooth®
- Enjoy MP3 music directly from your portable USB devices
- Rip music from CDs, radio and karaoke onto USB device

PHILIPS

Highlights

260K LED lights



Add the ultimate atmosphere, ambiance and passion to any party, with thousands of colored lights that flicker, flash and flow in time with your music. Easily choose light colors to match your theme, or just pick one of the systems many presets. Flick the NX bass button to make the light show even more intense.

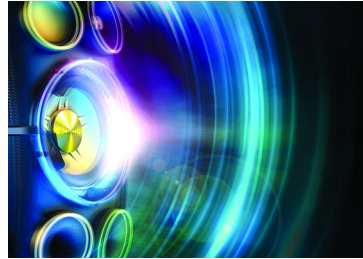
DJ Crossfader for mixing



Be the master of every party! DJ cross fader lets you mix your favorite tracks between channel A and B, so you can flow seamlessly between songs. Just select the device output for deck A (USB, Bluetooth®, CD, Audio in or tuner) to start the music, then choose the input device for deck B (USB or audio in). To change tracks, swipe the fader from one side to

another for a smooth transition that keeps the party pumping.

NX bass button



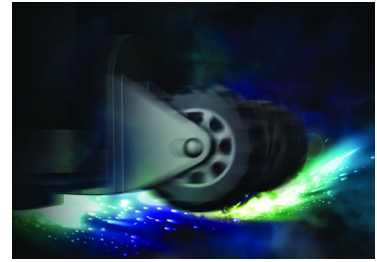
Available throughout the range, NX bass temporarily boosts bass and loudness to the extreme. Hit the NX bass button to instantly juice up your sound, make lighting effects go wild, and feel the immense bass of the subwoofers thundering through your bones.

Auto-DJ for automatic mixing



You can automate your tunes with Auto-DJ, which automatically mixes tracks on a connected USB drive. Add sound effects with the DJ jogwheel. Rock the house continuously!

Handles and wheels



Bring massive sound wherever you need it, upstairs, downstairs, indoors or out. NITRO audio solutions slip smoothly into any home thanks to their optimized footprints and clutter free, convenient controls integration. Link them up with your TV or PC to supersize your experience and make music and movies sound bigger than ever. Or move them outside using built-in handles and wheels to turn them into the ultimate outdoor party sound system.

Stream music via Bluetooth®



If you've got a big music collection stored away on a smartphone, tablet or computer, stream it to a NITRO system using digital Bluetooth® wireless music streaming and make it sound incredible. Powerful sound is rarely this easy or this convenient.

Specifications

Sound

- Total Sound Power (RMS): 3800 W
- Sound enhancement: NX Bass, Dynamic Bass Boost 3 steps, Digital sound control 5 modes
- Output Power: 45800W PMPO

Loudspeakers

- Number of speaker boxes: 1
- Speaker drivers: 8" woofer, 2" tweeter, 4" woofer
- Speaker types: bass reflex speaker system

Audio playback

- Playback media: CD, CD-R, CD-RW, MP3-CD
- Disc playback modes: repeat/one/all/program, repeat/shuffle/program
- USB Direct playback modes: fast backward/fast forward, play/pause, previous/next, repeat, shuffle, stop

Audio recording

- Recording media: USB device
- USB recording sources: CD, tuner, AUX, microphone in, USB, Bluetooth
- USB recording modes: instant record, programmed tracks, schedule radio program, single disc, single track

Tuner/Reception/Transmission

- Station presets: 20FM, 10AM
- Tuner bands: FM, MW
- Antenna: FM antenna, MW antenna
- Tuner enhancement: auto digital tuning, auto scan, Easy set (plug & play)

Auto DJ

- Metal
- Party

DJ Effect

- Beat Box
- Reverb

- Yeah
- Scratch

DJ Mix

- Source A: Audio in, Bluetooth, Disc, Tuner, USB
- Source B: Audio in, USB

Connectivity

- Microphone: Microphone socket
- USB: Dual USB host
- Audio in: 3.5mm stereo line in x2
- Aux in: 4 x RCA, DVD, Game, PC in, TV
- Microphone Input: Dynamic coil microphone, 750ohm +/- 30% impedance
- Headphone: 3.5 mm

Convenience

- Number of discs: 1
- Loader type: tray
- Karaoke: MIC volume
- Light Effect: Peace, Passion, Power, Samba, Fiesta, Cielo, Custom

Accessories

- Remote control: 28-key with 2xAAA batteries
- Cables/Connection: *Flat pin adaptor
- Others: batteries for remote control, FM/MW antenna, Quick start guide
- User Manual: Spanish
- Warranty: World Wide Guarantee booklet

Dimensions

- Gross weight: 27.4 kg
- Main unit width: 358 mm
- Main unit height: 1091 mm
- Main unit depth: 470.5 mm
- Packaging depth: 421 mm
- Packaging height: 1192 mm
- Packaging width: 550 mm

Power

- Power supply: 100 - 240V AC, 50/60Hz



Issue date 2016-12-22

Version: 5.0.4

12 NC: 8670 001 25724
EAN: 48 95185 60927 0

© 2016 Koninklijke Philips N.V.
All Rights reserved.

Specifications are subject to change without notice.
Trademarks are the property of Koninklijke Philips N.V.
or their respective owners.

www.philips.com

* Avoid extensive use of the set in a volume higher than 85 decibel
because this may damage your hearing.