

Always there to help you

Register your product and get support at
www.philips.com/welcome

FWM211

Question?
Contact
Philips



EN	User Manual	3
ES	Manual del usuario	21
FR	Mode d'emploi	41



Thank you for choosing Philips.

Need help fast?

Read your Quick Start Guide and/or User Manual first for quick tips that make using your Philips product more enjoyable.

If you have read your instructions and still need assistance, you may access our online help at

www.philips.com/welcome
or call

1-888-PHILIPS (744-5477)
while with your product.
(and Model / Serial number)



Philips vous remercie de votre confiance.

Besoin d'une aide rapide?

Le Guide rapide de début et Manuel de l'utilisateur regorgent d'astuces destinées à simplifier l'utilisation de votre produit Philips. Toutefois, si vous ne parvenez pas à résoudre votre problème, vous pouvez accéder à notre aide en ligne à l'adresse

www.philips.com/welcome
ou formez le

1-800-661-6162 (Francophone)
1-888-PHILIPS (744-5477) (English speaking)

Veillez à avoir votre produit à portée de main.

(et model / serial nombre)



Gracias por escoger Philips

Necesita ayuda inmediata?

Lea primero la Guía rápida del comienzo o el Manual del usuario, en donde encontrará consejos que le ayudarán a disfrutar plenamente de su producto Philips.

Si después de leerlo aún necesita ayuda, consulte nuestro servicio de asistencia en línea en

www.philips.com/welcome
o llame al teléfono

1-888-PHILIPS (744-5477)
y tenga a mano el producto.
(y número de model / serial)

PHILIPS

Contents

1 Important	4
Important Safety Instructions	4
2 Your Mini Hi-Fi System	5
Introduction	5
What's in the box	5
Overview of the main unit	6
Overview of the remote control	7
3 Get started	8
Connect MW (AM) antenna	8
Connect speakers	9
Prepare the remote control	9
Connect power	9
Set clock	10
Turn on	10
4 Play	10
Basic play operations	10
Play disc	10
Play from USB	11
Play audio from an external device	11
5 Play options	11
Adjust sound	11
Repeat and shuffle play	11
Program tracks	12
Display different information	12
6 Listen to radio	12
Tune to radio stations	12
Store radio stations automatically	12
Store radio stations manually	13
Select a preset radio station	13
7 Other features	13
Set alarm timer	13
Set sleep timer	13

8 Product information	14
Specifications	14
USB playability information	14
Supported MP3 disc formats	15
Maintenance	15
9 Troubleshooting	16
10 Notice	17
Disposal of your old product and batteries	17

1 Important

Important Safety Instructions

- ① Read these instructions.
- ② Keep these instructions.
- ③ Heed all warnings.
- ④ Follow all instructions.
- ⑤ Do not use this apparatus near water.
- ⑥ Clean only with dry cloth.
- ⑦ Do not block any ventilation openings. Install in accordance with the manufacturer's instructions.
- ⑧ Do not install near any heat sources such as radiators, heat registers, stoves, or other apparatus (including amplifiers) that produce heat.
- ⑨ Do not defeat the safety purpose of the polarized or grounding-type plug. A polarized plug has two blades with one wider than the other. A grounding type plug has two blades and a third grounding prong. The wide blade or the third prong are provided for your safety. If the provided plug does not fit into your outlet, consult an electrician for replacement of the obsolete outlet.



AC Polarized Plug

- ⑩ Protect the power cord from being walked on or pinched, particularly at

plugs, convenience receptacles, and the point where they exit from the apparatus.

- ⑪ Only use attachments/accessories specified by the manufacturer.
- ⑫ Use only with the cart, stand, tripod, bracket, or table specified by the manufacturer or sold with the apparatus. When a cart is used, use caution when moving the cart/apparatus combination to avoid injury from tip-over.



- ⑬ Unplug this apparatus during lightning storms or when unused for long periods of time.
- ⑭ Refer all servicing to qualified service personnel. Servicing is required when the apparatus has been damaged in any way, such as power-supply cord or plug is damaged, liquid has been spilled or objects have fallen into the apparatus, the apparatus has been exposed to rain or moisture, does not operate normally, or has been dropped.
- ⑮ Battery usage CAUTION – To prevent battery leakage which may result in bodily injury, property damage, or damage to the remote control:
 - Install all batteries correctly, + and - as marked on the remote control.
 - Do not mix old and new batteries.
 - Remove batteries when the remote control is not used for a long time.
 - The batteries shall not be exposed to excessive heat such as sunshine, fire or the like.
- ⑯ Apparatus shall not be exposed to dripping or splashing.

- ⑪ Do not place any sources of danger on the apparatus (e.g. liquid filled objects, lighted candles).
- ⑫ This product may contain lead and mercury. Disposal of these materials may be regulated due to environmental considerations. For disposal or recycling information, please contact your local authorities or the Electronic Industries Alliance: www.eiae.org.
- ⑬ Where the MAINS plug or an appliance coupler is used as the disconnect device, the disconnect device shall remain readily operable.



Warning

- Never remove the casing of this apparatus.
- Never place this apparatus on other electrical equipment.
- Never look into the laser beam inside this apparatus.

2 Your Mini Hi-Fi System

Congratulations on your purchase, and welcome to Philips! To fully benefit from the support that Philips offers, register your product at www.philips.com/welcome.

Introduction

With this Hi-Fi system, you can:

- enjoy audio from discs, USB device, or other external devices; and
- listen to FM/AM radio stations

To enrich sound, this Hi-Fi system offers you these sound effects:

- Digital Sound Control (DSC)
- Dynamic Bass Boost (DBB)
- Max Sound for instant power boost

The Hi-Fi system supports these media formats:

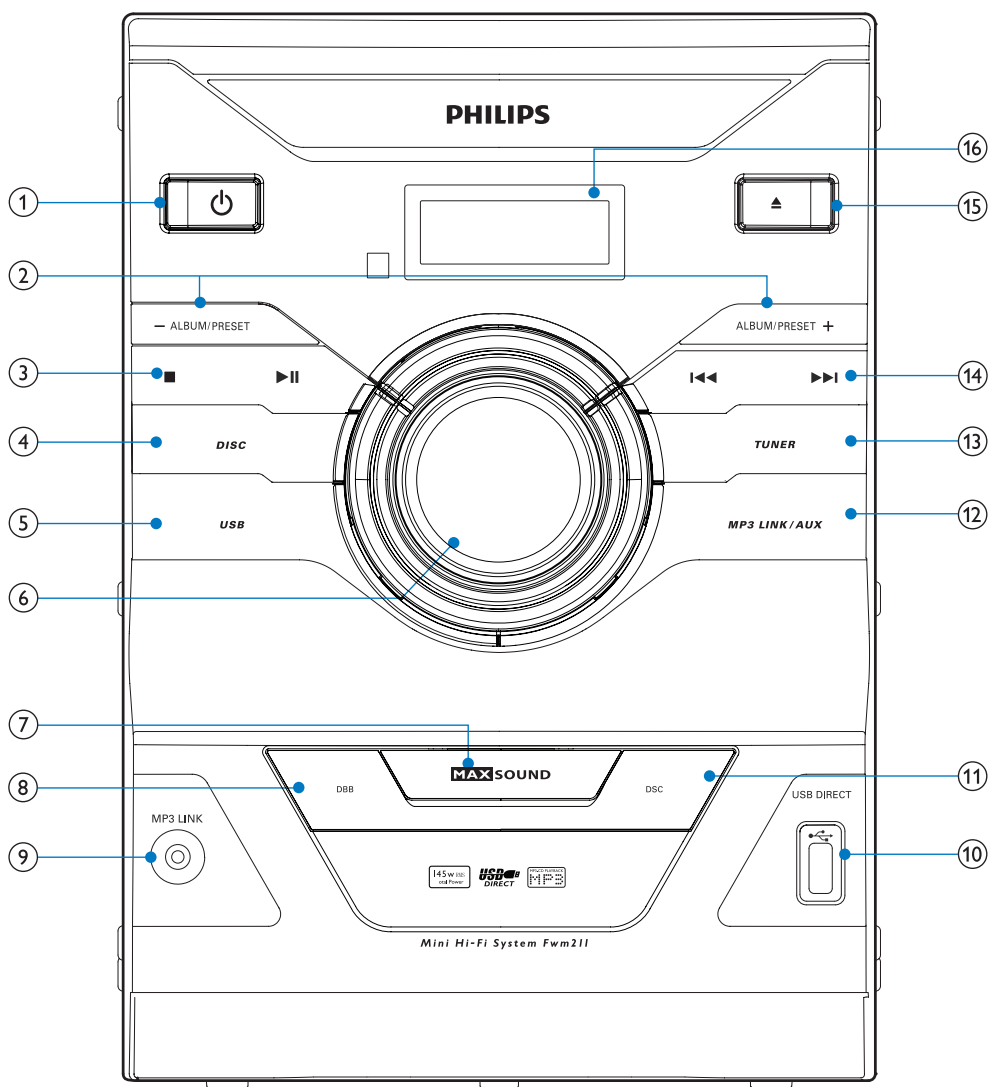


What's in the box


Check and identify the contents of your package:

- Main unit
- Remote control (with batteries)
- Speaker box (x 2)
- AM loop antenna
- MP3 link cable
- User manual
- Quick start guide

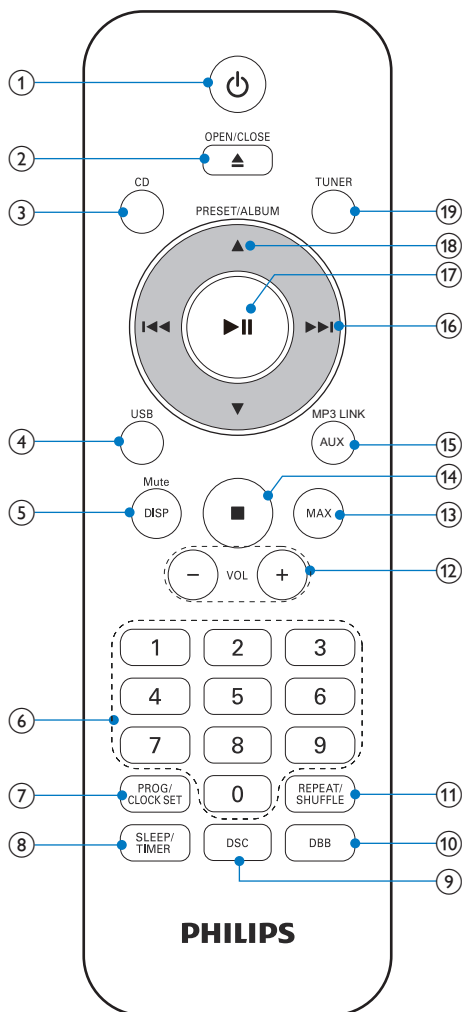
Overview of the main unit



- ①
 - Turn the Hi-Fi system on.
 - Switch to standby mode or Eco power standby mode.
- ② **ALBUM/PRESET +/-**
 - Select a preset radio station.
 - Skip to the previous or next album.
- ③
 - Stop play or erase a program.
 - Start or pause play.

- ④ **DISC**
 - Select disc source.
- ⑤ **USB**
 - Select USB source.
- ⑥ **Volume control**
 - Adjust volume.
- ⑦ **MAX SOUND**
 - Turn instant power boost on/off.
- ⑧ **DBB**
 - Turn dynamic bass enhancement on/off.
- ⑨ **MP3 LINK**
 - Connect an external audio device.
- ⑩ **USB DIRECT** 
 - Connect USB device.
- ⑪ **DSC**
 - Select a preset sound setting.
- ⑫ **MP3 LINK/AUX**
 - Select MP3 link or AUX source.
- ⑬ **TUNER**
 - Select tuner source.
- ⑭ **⏮ / ⏭**
 - Skip to the previous or next track.
 - Search within a track or disc.
 - Tune to a radio station.
 - Adjust time.
- ⑮ **⏮**
 - Open or close the disc tray.
- ⑯ **Display panel**
 - Show current status.

Overview of the remote control



- ① **⏻**
 - Turn the Hi-Fi system on.
 - Switch to standby mode or Eco power standby mode.
- ② **OPEN/CLOSE ⬆**
 - Open or close the disc tray.
- ③ **CD**
 - Select disk source.

- ④ **USB**
 - Select USB source.
- ⑤ **DISP/MUTE**
 - Mute or unmute sound.
 - Display clock and play information.
- ⑥ **Numeric keypad**
 - Select a track from a disc directly.
- ⑦ **PROG/CLOCK SET**
 - Set time.
 - Program tracks and radio stations.
- ⑧ **SLEEP/TIMER**
 - Set alarm or sleep timer.
- ⑨ **DSC**
 - Select a preset sound setting.
- ⑩ **DBB**
 - Turn dynamic bass enhancement on/off.
- ⑪ **REPEAT/SHUFFLE**
 - Play tracks repeatedly or randomly.
- ⑫ **VOL +/-**
 - Adjust volume.
- ⑬ **MAX**
 - Turn instant power boost on/off.
- ⑭ **■**
 - Stop play.
 - Erase a program.
- ⑮ **MP3 LINK/AUX**
 - Select MP3 Link or AUX source.
- ⑯ **◀◀ / ▶▶**
 - Search within a track or disc.
 - Tune to a radio station.
 - Skip to the previous or next track.
 - Adjust time.
- ⑰ **▶▶**
 - Start or pause play.
- ⑱ **PRESET/ALBUM ▲ ▼**
 - Select a preset radio station.
 - Skip to the previous or next album.
- ⑲ **TUNER**
 - Select tuner source.

3 Get started

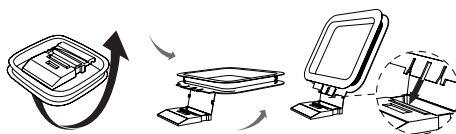
Caution

- Use of controls or adjustments or performance of procedures other than herein may result in hazardous radiation exposure or other unsafe operation.

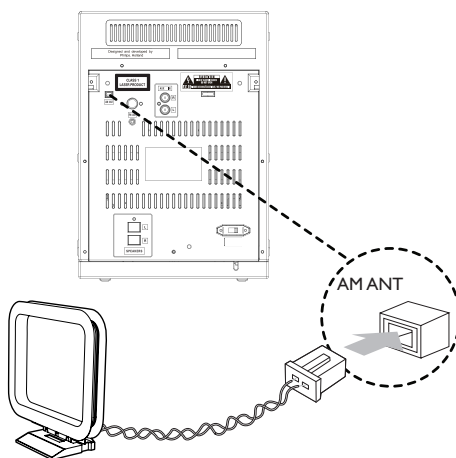
Always follow the instructions in this chapter in sequence.

Connect MW (AM) antenna

- 1 Assemble the MW (AM) loop antenna.



- 2 Connect the MW (AM) loop antenna to the **AM ANT** socket at the back of the Hi-Fi system.

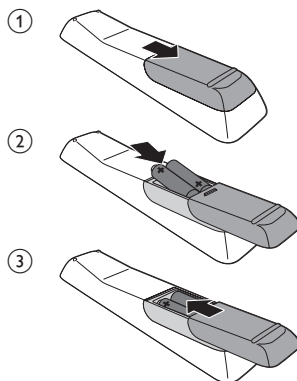
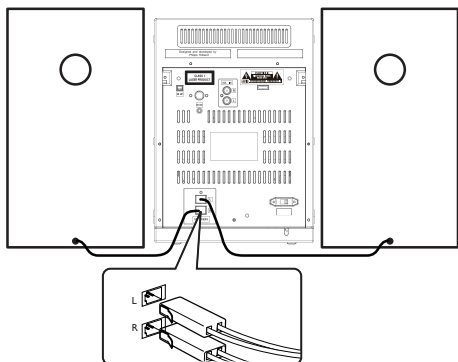


Connect speakers

Note

- For better sound effect, use the supplied speakers only.
- Connect only speakers with impedance that is the same or higher than the supplied speakers. Refer to the "Specifications" section of this manual.

Insert speaker wires completely into the speaker sockets at the back of the Hi-Fi system.



Connect power

Caution

- Risk of product damage! Make sure that the power supply voltage corresponds to the voltage printed on the head of the AC power cord.
- Risk of electric shock! When you unplug the power cord, always pull the plug from the socket. Never pull the cord.

Note

- Before connecting the AC power cord, make sure that you have completed all other connections.

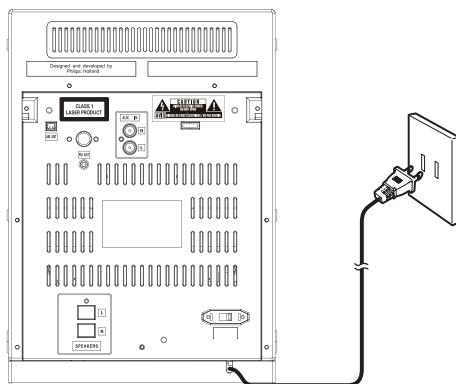
Prepare the remote control

Caution

- Risk of explosion! Keep batteries away from heat, sunshine or fire. Never discard batteries in fire.
- Risk of decreased battery life! Never mix different brands or types of batteries.

Before using the remote control, install two AAA batteries with correct polarity (+/-) as indicated.

Connect the AC power cord to the wall power socket.



Set clock

- 1 In standby mode, press and hold **CLOCK SET** for two seconds.
↳ **[SET CLOCK]** (set clock) scrolls on the display, then **[24H]** or **[12H]** appears.
- 2 Press **◀▶** to select 12/24 hour format.
- 3 Press **CLOCK SET** to confirm.
↳ The hour digits begin to blink.
- 4 Repeat steps 2 to 3 to set the hour and minute.



Tip

- To exit clock setting mode, press **■**.

Turn on

Press **⏻**.

- ↳ The Hi-Fi system switches to the last selected source.

Switch to standby mode

Press **⏻** to switch the Hi-Fi system to standby mode.

- ↳ The clock (if set) appears on the display panel.

To switch the system to Eco Power Standby mode:

In standby mode, press and hold **⏻** for 2 seconds.

- ↳ **[ECO POWER]** (Eco power) scrolls on the display, then the backlight turns off.

4 Play

Basic play operations

You can control play through the following operations.

Function	Action
To stop play	Press ■ .
To pause or resume play	Press ▶ .
To skip to a track	Press ◀▶ .
To search during play	Press and hold ◀▶ , then release to resume normal play.
To select an album (for MP3/WMA)	Press ▲ / ▼ .
To select a track directly	Press the numeric buttons.

Play disc



Note

- Make sure that the disk contains playable audio content.

- 1 Press **CD** to select the disk source.
- 2 Press **▲**.
↳ The disc tray opens.
- 3 Insert a disc with the printed side facing up, then press **▲** to close the disc tray.
↳ **[Read]** (read) blinks for about 10 seconds, then play starts automatically.

Play from USB



Note

- Make sure that the USB device contains playable audio content.

- 1 Insert the USB device into the socket.
- 2 Press **USB** to select the USB source.
→ Play starts automatically.

Play audio from an external device

With this Hi-Fi system, you can play audio from an external audio device.

For audio device with headphone sockets:

- 1 Press **MP3 LINK/AUX** to select MP3 link source.
- 2 Connect the MP3 Link cable to
 - the **MP3 LINK** socket.
 - the headphone socket on an external device.
- 3 Play the external device (see the device's user manual).

For other audio devices:

- 1 Press **MP3 LINK/AUX** repeatedly to select AUX source.
- 2 Connect the audio cables to:
 - the **AUX IN** sockets.
 - the **AUDIO OUT** sockets on an external device.
- 3 Play the device (see the device's user manual).

5 Play options

Adjust sound

During play, you can adjust volume and select the sound effects.

Function	Action
To increase or decrease volume	Press VOL +/- .
To mute or resume sound	Press and hold MUTE for two seconds.
To turn instant power boost on or off	Press MAX .
To turn dynamic bass enhancement on or off	Press DBB .
To select a preset sound effect:	Press DSC repeatedly.
FLAT (flat);	
OPTIMAL (optimal);	
JAZZ (jazz);	
ROCK (rock);	
TECHNO (techno)	

Repeat and shuffle play

- 1 Press **REPEAT** repeatedly to select:
 - : play current track repeatedly.
 - (repeat all): play all tracks repeatedly.
 - (for MP3/WMA only): play current album repeatedly.
 - : play all tracks randomly.
- 2 To return to normal play, press **REPEAT** repeatedly until **[TRK]** (track) is displayed.

Program tracks

You can program a maximum of 20 tracks.

- 1 In CD or USB mode, press ■ to stop playback, then press **PROG** to activate programming mode.
 - ↳ **[PROG]** (program) and the preset number blinks on the display panel.
- 2 For MP3/WMA tracks, press ▲ / ▼ to select an album.
- 3 Press ◀◀ / ▶▶ to select a track number, then press **PROG** to confirm.
- 4 Repeat steps 2 to 3 to program more tracks.
- 5 Press ▶▶ to play the programmed tracks.
 - ↳ During play, **[PROG]** (program) is displayed.
 - To erase the program, when playback is stopped, press ■.

Display different information

During play, press **DISPLAY** repeatedly to view time and different play information.

6 Listen to radio

Tune to radio stations



Note

- To improve FM reception, fully extend and adjust the position of FM antenna.

- 1 Press **TUNER** repeatedly to select FM/ MW(AM) tuner source.
- 2 Press and hold ◀◀ / ▶▶ for 2 seconds.
 - ↳ The Hi-Fi system tunes to a station with strong reception automatically.
- 3 Repeat step 2 to tune to more stations.

To tune to a weak station:

- 1 Press ◀◀ / ▶▶ repeatedly until you find optimal reception.

Store radio stations automatically



Note

- You can store a maximum of 30 FM radio stations and 10 MW(AM) radio stations.

In tuner mode, press and hold **PROG** for 2 seconds.

- ↳ **[AUTO]** (auto) is displayed.
- ↳ The system stores all the available stations and broadcasts the first available station automatically.

Store radio stations manually

- 1 Tune to an FM/MW(AM) radio station.
- 2 Press **PROG**.
↳ The preset number blinks.
- 3 Press **▲** / **▼** repeatedly to select a number.
- 4 Press **PROG** again to confirm.
- 5 Repeat steps 1 to 4 to store other stations.



Note

- To remove a pre-stored station, store another station in its place.

Select a preset radio station

In tuner mode, press **▲** / **▼** repeatedly or the numeric buttons on the remote control to select a preset radio station.

7 Other features

Set alarm timer

This Hi-Fi system can be used as an alarm clock. For alarm source, you can select disc, tuner, or USB.



Note

- Make sure that you have set the clock correctly.

- 1 In standby mode, press and hold **TIMER** until **[SET TIMER]** (set timer) appears.
↳ **[SELECT SOURCE]** (select source) scrolls on the display.
- 2 Press the source selection keys to select an alarm source: **DISC**, **TUNER**, or **USB**.
- 3 Press **TIMER** to confirm.
↳ The hour digits blink.
- 4 Press **◀◀** / **▶▶** to set the hour.
- 5 Press **TIMER** to confirm.
↳ The minute digits blink.
- 6 Repeat steps 4-5 to set the minute.
↳ The alarm icon appears.

Set sleep timer

This Hi-Fi system can switch to standby mode automatically after a preset time period. Press **SLEEP** repeatedly to select a preset period (in minutes).

- ↳ When the sleep timer is activated, **zz** appears.

To deactivate the sleep timer:

Press **SLEEP** repeatedly until **[SLP OFF]** (sleep off) is displayed.

- ↳ **zz** disappears.

8 Product information

Note

- Product information is subject to change without prior notice.

Specifications

Amplifier

Max Output Power	145 W
Frequency Response	63 - 16000 Hz, ± 3 dB
Signal to Noise Ratio	>55 dB

Disc

Laser Type	Semiconductor
Disc Diameter	12cm/8cm
Support Disc	CD-DA, CD-R, CD-RW, MP3-CD, WMA-CD
Audio DAC	24Bits / 44.1kHz
Total Harmonic Distortion	<1%
Frequency Response	63Hz - 16kHz
S/N Ratio	>65dBA

Tuner

Tuning Range	FM: 87.5 - 108 MHz MW: 531 - 1602 kHz
Tuning grid	FM: 100 KHz MW: 9KHz
Sensitivity	- Mono, 26dB S/N Ratio <22 dBu - Stereo, 46dB S/N Ratio <45 dBu
Search Selectivity	<28 dBu
Total Harmonic Distortion	<3%
Signal to Noise Ratio	>45 dB

Speakers

Speaker Impedance	4ohm
-------------------	------

General information

AC Power	120 V~, 60 Hz
Operation Power Consumption	65 W
Eco Standby Power Consumption	<0.5 W
USB Direct	Version 2.0/1.1
Dimensions	
- Main Unit (W x H x D)	220 x 312 x 248 mm
- Speaker Box (W x H x D)	195 x 310 x 207 mm
Weight	
- Main Unit	3.4 kg
- Speaker Box	2 x 2.1 kg

USB playability information

Compatible USB devices:

- USB flash memory (USB 2.0 or USB1.1)
- USB flash players (USB 2.0 or USB1.1)
- Memory cards (requires an additional card reader to work with this unit)

Supported formats:

- USB or memory file format FAT16, FAT32 (sector size: 512 bytes)
- MP3 bit rate (data rate): 32-320 Kbps and variable bit rate
- WMA v9 or earlier
- Directory nesting up to a maximum of 8 levels
- Number of albums/ folders: maximum 99
- Number of tracks/titles: maximum 999
- ID3 tag v2.0 or later
- File name in Unicode UTF8 (maximum length: 128 bytes)

Unsupported formats:

- Empty albums: an empty album is an album that does not contain MP3/WMA files, and will not be shown in the display.
- Unsupported file formats are skipped. For example, Word documents (.doc) or MP3 files with extension .dlf are ignored and not played.
- AAC, WAV, PCM audio files
- DRM protected WMA files (.wav, .m4a, .m4p, .mp4, .aac)
- WMA files in Lossless format

- Do not use solvents such as benzene, thinner, commercially available cleaners, or antistatic spray intended for analogue records.

Clean the disc lens

- After prolonged use, dirt or dust may accumulate at the disc lens. To ensure good play quality, clean the disc lens with Philips CD lens cleaner or any commercially available cleaner. Follow the instructions supplied with cleaner.

Supported MP3 disc formats

- ISO9660, Joliet
- Maximum title number: 511 (depending on file name length)
- Maximum album number: 511
- Supported sampling frequencies: 32 kHz, 44.1kHz, 48 kHz
- Supported Bit-rates: 32~320 (kbps), variable bit rates
- ID3 tag v2.0 or later

Maintenance

Clean the cabinet

- Use a soft cloth slightly moistened with a mild detergent solution. Do not use a solution containing alcohol, spirits, ammonia or abrasives.

Clean discs

- When a disc becomes dirty, clean it with a cleaning cloth. Wipe the disc from the centre out.



9 Troubleshooting



Warning

- Never remove the casing of this device.

To keep the warranty valid, never try to repair the system yourself.

If you encounter problems when using this device, check the following points before requesting service. If the problem remains unsolved, go to the Philips Web page (www.philips.com/support). When you contact Philips, make sure that the device is nearby and the model number and serial number are available.

No power

- Ensure that the AC power plug of the unit is connected properly.
- Ensure that there is power at the AC outlet.
- To save power, the system switches off automatically 15 minutes after track play reaches the end and no control is operated.

No sound or poor sound

- Adjust the volume.
- Check that the speakers are connected correctly.
- Check if the stripped speaker wires are clamped.

No response from the Hi-Fi system

- Disconnect and reconnect the AC power plug, then turn on the system again.
- As a power-saving feature, the unit switches off automatically 15 minutes after track play reaches the end and no control is operated.

Remote control does not work

- Before you press any function button, first select the correct source with the remote control instead of the main unit.

- Reduce the distance between the remote control and the unit.
- Insert the battery with its polarities (+/- signs) aligned as indicated.
- Replace the battery.
- Aim the remote control directly at the sensor on the front of the unit.

No disc detected

- Insert a disc.
- Check if the disc is inserted upside down.
- Wait until the moisture condensation at the lens has cleared.
- Replace or clean the disc.
- Use a finalized CD or correct format disc.

Poor radio reception

- Increase the distance between the unit and your TV or VCR.
- Fully extend the FM antenna.

Alarm does not work

- Set the clock/alarm correctly.

Clock/alarm setting erased

- Power has been interrupted or the power plug has been disconnected.
- Reset the clock/alarm.

USB device not supported

- The USB device is incompatible with the unit. Try another one.

10 Notice

Any changes or modifications made to this device that are not expressly approved by Philips Consumer Lifestyle may void the user's authority to operate the equipment.

Notice for the USA

This equipment has been tested and found to comply with the limits for a Class B digital device, pursuant to part 15 of the FCC Rules.

These limits are designed to provide reasonable protection against harmful interference in a residential installation. This equipment generates, uses, and can radiate radio frequency energy and, if not installed and used in accordance with the instruction manual, may cause harmful interference to radio communications. However, there is no guarantee that interference will not occur in a particular installation. If this equipment does cause harmful interference to radio or television reception, which can be determined by turning the equipment off and on, the user is encouraged to try to correct the interference by one or more of the following measures:

- Relocate the receiving antenna.
- Increase the separation between equipment and receiver.
- Connect the equipment into an outlet on a circuit different from that to which the receiver is connected.
- Consult the dealer or an experienced radio/TV technician for help.



Warning

- Changes or modifications made to this equipment not expressly approved by Philips may void the FCC authorization to operate this equipment.

This Class B digital apparatus complies with Canadian ICES-003.

This device complies with Industry Canada license-exempt RSS standard(s).

The set complies with the FCC-Rules, Part 15 and with 21 CFR 1040.10. Operation is subject to the following two conditions:

- This device may not cause harmful interference, and
- This device must accept any interference received, including interference that may cause undesired operation.

Disposal of your old product and batteries

Your product is designed and manufactured with high quality materials and components, which can be recycled and reused. Never dispose of your product with other household waste. Please inform yourself about the local rules on the separate collection of electrical and electronic products and batteries. The correct disposal of these products helps prevent potentially negative consequences on the environment and human health.

Your product contains batteries, which cannot be disposed of with normal household waste. Please inform yourself about the local rules on separate collection of batteries. The correct disposal of batteries helps prevent potentially negative consequences on the environment and human health.

Please visit www.recycle.philips.com for additional information on a recycling center in your area.

Environmental information

All unnecessary packaging has been omitted. We have tried to make the packaging easy to separate into three materials: cardboard (box), polystyrene foam (buffer) and polyethylene (bags, protective foam sheet.)

Your system consists of materials which can be recycled and reused if disassembled by a specialized company. Please observe the local regulations regarding the disposal of packaging materials, exhausted batteries and old equipment.



Be responsible
Respect copyrights

The making of unauthorized copies of copy-protected material, including computer programs, files, broadcasts and sound recordings, may be an infringement of copyrights and constitute a criminal offence. This equipment should not be used for such purposes.



Windows Media and the Windows logo are trademarks, or registered trademarks of Microsoft Corporation in the United States and/or other countries.

This apparatus includes these labels:



Class II equipment symbol



This symbol indicates that the apparatus has a double insulation system.



Note

- The type plate is located on the bottom of the apparatus.

**Register online at www.philips.com/welcome today to
get the very most from your purchase.**

Registering your model with PHILIPS makes you eligible for all of the valuable benefits listed below, so don't miss out.
Register online at www.philips.com/welcome to ensure:

*Product Safety Notification

By registering your product, you'll receive notification - directly from the manufacturer.

*Additional Benefits

Registering your product guarantees that you'll receive all of the privileges to which you're entitled, including special money-saving offers.

PHILIPS

***Congratulations on your purchase,
and welcome to the "family!"***

Dear PHILIPS product owner:

Thank you for your confidence in PHILIPS. You've selected one of the best-built, best-backed products available today. We'll do everything in our power to keep you happy with your purchase for many years to come.

As a member of the PHILIPS "family," you're entitled to protection by one of the most comprehensive warranties in the industry. What's more, your purchase guarantees you'll receive all the information and special offers for which you qualify, plus easy access to accessories from our convenient home shopping network.

Most importantly, you can count on our uncompromising commitment to your total satisfaction.

All of this is our way of saying welcome - and thanks for investing in a PHILIPS product.

P.S. To get the most from your PHILIPS purchase, be sure to register online at:

www.philips.com/welcome

Know these safety symbols



⚡ This "bolt of lightning" indicates uninsulated material within your unit may cause an electrical shock. For the safety of everyone in your household, please do not remove product covering.

! The "exclamation point" calls attention to features for which you should read the enclosed literature closely to prevent operating and maintenance problems.

WARNING: To reduce the risk of fire or electric shock, this apparatus should not be exposed to rain or moisture and objects filled with liquids, such as vases, should not be placed on this apparatus.

CAUTION: To prevent electric shock, match wide blade of plug to wide slot, fully insert.

ATTENTION: Pour éviter les chocs électriques, introduire la lame la plus large de la fiche dans la borne correspondante de la prise et pousser jusqu'au fond.

For Customer Use

Enter below the Serial No. which is located on the rear of the cabinet. Retain this information for future reference.

Model No. _____
Serial No. _____

PHILIPS

Visit our World Wide Web Site at <http://www.philips.com/welcome>

PHILIPS LIMITED WARRANTY ONE (1) YEAR

WARRANTY COVERAGE:

PHILIPS warranty obligation is limited to the terms set forth below.

WHO IS COVERED:

Philips warrants the product to the original purchaser or the person receiving the product as a gift against defects in materials and workmanship as based on the date of original purchase ("Warranty Period") from an Authorized Dealer. The original sales receipt showing the product name and the purchase date from an authorized retailer is considered such proof.

WHAT IS COVERED:

The Philips warranty covers new products if a defect in material or workmanship occurs and a valid claim is received by Philips within the Warranty Period. At its option, Philips will either (1) repair the product at no charge, using new or refurbished replacement parts, or (2) exchange the product with a product that is new or which has been manufactured from new, or serviceable used parts and is at least functionally equivalent or most comparable to the original product in Philips current inventory, or (3) refund the original purchase price of the product. Philips warrants replacement products or parts provided under this warranty against defects in materials and workmanship from the date of the replacement or repair for ninety (90) days or for the remaining portion of the original product's warranty, whichever provides longer coverage for you. When a product or part is exchanged, any replacement item becomes your property and the replaced item becomes Philips' property. When a refund is given, your product becomes Philips' property.

Note: Any product sold and identified as refurbished or renewed carries a ninety (90) day limited warranty.

Replacement product can only be sent if all warranty requirements are met. Failure to follow all requirements can result in delay.

WHAT IS NOT COVERED - EXCLUSIONS AND LIMITATIONS:

This Limited Warranty applies only to the new products manufactured by or for Philips that can be identified by the trademark, trade name, or logo affixed to it. This Limited Warranty does not apply to any non-Philips hardware product or any software, even if packaged or sold with the product. Non-Philips manufacturers, suppliers, or publishers may provide a separate warranty for their own products packaged with the bundled product.

Philips is not liable for any damage to or loss of any programs, data, or other information stored on any media contained within the product, or any non-Philips product or part not covered by this warranty. Recovery or reinstallation of programs, data or other information is not covered under this Limited Warranty.

This warranty does not apply (a) to damage caused by accident, abuse, misuse, neglect, misapplication, or non-Philips product, (b) to damage caused by service performed by anyone other than Philips or Philips Authorized Service Location, (c) to a product or a part that has been modified without the written permission of

Philips, or (d) if any Philips serial number has been removed or defaced, or (e) product, accessories or consumables sold "AS IS" without warranty of any kind by including refurbished Philips product sold "AS IS" by some retailers.

This Limited Warranty does not cover:

- Shipping charges to return defective product to Philips.
- Labor charges for installation or setup of the product, adjustment of customer controls on the product, and installation or repair of antenna/signal source systems outside of the product.
- Product repair and/or part replacement because of improper installation or maintenance, connections to improper voltage supply, power line surge, lightning damage, retained images or screen markings resulting from viewing fixed stationary content for extended periods, product cosmetic appearance items due to normal wear and tear, unauthorized repair or other cause not within the control of Philips.
- Damage or claims for products not being available for use, or for lost data or lost software.
- Damage from mishandled shipments or transit accidents when returning product to Philips.
- A product that requires modification or adaptation to enable it to operate in any country other than the country for which it was designed, manufactured, approved and/or authorized, or repair of products damaged by these modifications.
- A product used for commercial or institutional purposes (including but not limited to rental purposes).
- Product lost in shipment and no signature verification receipt can be provided.
- Failure to operate per Owner's Manual.

TO OBTAIN ASSISTANCE IN THE U.S.A., PUERTO RICO, OR U.S. VIRGIN ISLANDS...

Contact Philips Customer Care Center at:
1-888-PHILIPS (1-888-744-5477)

TO OBTAIN ASSISTANCE IN CANADA...

1-800-661-6162 (French Speaking)
1-888-PHILIPS (1-888-744-5477) - (English or Spanish Speaking)

REPAIR OR REPLACEMENT AS PROVIDED UNDER THIS WARRANTY IS THE EXCLUSIVE REMEDY FOR THE CONSUMER. PHILIPS SHALL NOT BE LIABLE FOR ANY INCIDENTAL OR CONSEQUENTIAL DAMAGES FOR BREACH OF ANY EXPRESS OR IMPLIED WARRANTY ON THIS PRODUCT. EXCEPT TO THE EXTENT PROHIBITED BY APPLICABLE LAW, ANY IMPLIED WARRANTY OF MERCHANTABILITY OR FITNESS FOR A PARTICULAR PURPOSE ON THIS PRODUCT IS LIMITED IN DURATION TO THE DURATION OF THIS WARRANTY.

Some states do not allow the exclusions or limitation of incidental or consequential damages, or allow limitations on how long an implied warranty lasts, so the above limitations or exclusions may not apply to you.

This warranty gives you specific legal rights. You may have other rights which vary from state/province to state/province.

Philips, P.O. Box 10313 Stamford, CT 06904

3140 035 50201

Philips Consumer Lifestyle
A division of Philips Electronics North America Corporation
P.O. Box 10313
Stamford, CT 06904
Phone: 1-888-PHILIPS (744-5477)

Meet Philips at the Internet
<http://www.philips.com/welcome>



Specifications are subject to change without notice
© 2012 Koninklijke Philips Electronics N.V.
All rights reserved.

FWM211_37_UM_V1.0

