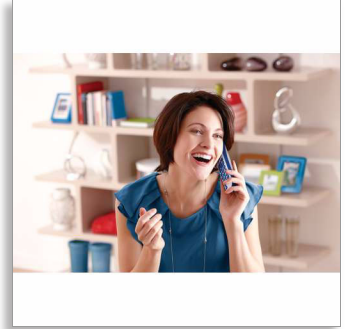




Philips BeNear  
Cordless phone

### 1000-series

1.6" display/ amber backlight  
Blue



CD1901WB

# Color your conversation

## Keep it simple

Designed to be completely simple and user-friendly, this phone gives you all the benefits of long-lasting ergonomic comfort, and great sound reproduction. With easy installation, and an intuitive menu, it is simplicity itself.

### Crystal clear sound

- Parametric Equalizer delivers pure and clear sound
- Automatic Volume Control offsets unwanted volume variation
- Optimized antenna layout for great reception in any room
- Advanced sound testing & tuning for superb voice quality

### Nice and simple

- Ultimate convenience through easy setup
- Easy to read 4.1 cm (1.6") display with amber backlight
- Save up to 50 favorite contacts in your phonebook
- Up to 16 hours of talk time
- Caller ID – so you always know who is calling

### Eco-conscious product

- Up to 95% reduction of emitted radiation in charging mode
- Low power consumption: < 0,6W in stand-by mode



asimpleswitch.com

# PHILIPS

Cordless phone  
1000-series 1.6" display/ amber backlight, Blue

## Highlights

### Advanced sound testing



We test the sound quality of our DECT phones the same way as high-end headphone manufacturers do. Using an advanced ear simulator, we can accurately re-create the way people actually hear. This helps our acoustic engineers to measure and fine-tune things like frequency response, distortion and overall hearing perception, to create perfect voice reproduction for both handset and handsfree modes.

### Parametric Equalizer



Our telephones use parametric equalization in the digital sound processing to fine-tune the sound response back to the intended linear frequency response curve, delivering sound that is pure and clear, for each conversation.

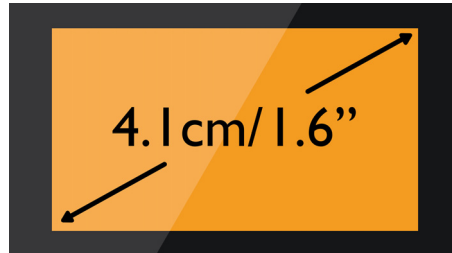
### Automatic Volume Control



Automatic Volume Control offsets variations in sound signal, which can be caused by

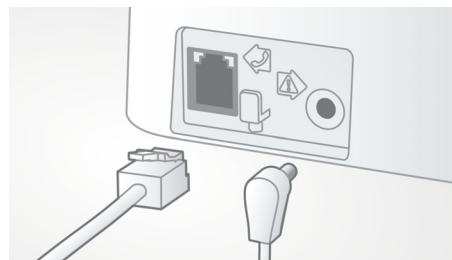
distance, signal strength or the caller's phone - so what you hear always remains consistent. Reducing the audio amplification for strong signals, and increasing it for weak ones, it means you can enjoy a smooth conversation without unwanted sound volume variation.

### 4.1cm (1.6") display



Easy to read 4.1 cm (1.6") display with amber backlight

### Easy setup



Ultimate convenience through easy set up.  
Simplified installation - Plug & Play product

### 50-name phone book



Always have the phone numbers of your loved ones available: Save up to 50 names in your phonebook.

CD1901WB/90

### Caller ID



Sometimes it is good to know who is calling before you answer. And our Caller ID lets you keep track of who is on the other end of the line.

### Optimized antenna layout



Our optimized antenna layout ensures strong and stable reception – even in areas of the house where cordless transmission is difficult. Now you can take a call wherever you are in the house, and enjoy a long, uninterrupted conversation even as you walk around.



[asimpleswitch.com](http://asimpleswitch.com)

### Philips Green Logo

Philips Green Products can reduce costs, energy consumption and CO2 emissions. How? They offer a significant environmental improvement in one or more of the Philips Green Focal Areas – Energy efficiency, Packaging, Hazardous substances, Weight, Recycling and disposal and Lifetime reliability.

# Specifications

## Sound

- Volume control on handset
- Ringtones on handset: 10 standard

## Picture/Display

- Display size: 4.1 cm / 1.6"
- Display type: Black & White; alphanumeric
- Backlight: Yes
- Backlight color: Amber

## Convenience

- Menu structure in the handset: List Menu
- Signal strength indicator: 3- bar indicator
- Battery level indicator: 3- bar battery icon
- Date / Time display
- Base Station keys: Paging key
- Programmable hot keys: Key 1 and 2
- Auto Registration
- Auto hang up
- Key tone on/off
- Call Management: Call Waiting\*, Caller ID\*, Microphone mute, Missed Calls, Received Calls
- Multi base capability: 1
- Multi handset capability: Up to 4
- Line cord length: 1.8m
- Power cord length: 1.8m
- Charge time: 8 hours

- Up to 16 hrs talk time
- Up to 250 hrs standby time
- Range: Open field <300m; in door <50m

## Memory Capacity

- Phonebook: 50 names and numbers
- Redial List Capacity: 10 entries
- Call log entries: 20 entries
- Phonebook store in the base

## Power

- Battery capacity: 600 mAh
- Battery type: AAA NiMH Rechargeable
- Mains power: AC 100-240V ~50/60Hz
- Power Consumption: < 0.6 W

## Security

- Transmission encryption : Yes

## Network Features

- Compatible: GAP

## SAR Value

- Philips handsets: <0.1 W/kg

## Eco Design

- EcoMode: automatic



Issue date 2015-01-30

Version: 2.0.1

12 NC: 8670 000 89849  
EAN: 87 12581 64337 9

© 2015 Koninklijke Philips N.V.  
All Rights reserved.

Specifications are subject to change without notice.  
Trademarks are the property of Koninklijke Philips N.V.  
or their respective owners.

[www.philips.com](http://www.philips.com)