

Always there to help you

Register your product and get support at  
www.philips.com/support



Short User Manual

PHILIPS



BTM2310

## Safety



This 'bolt of lightning' indicates uninsulated material within the device may cause an electrical shock. For the safety of everyone in your household, please do not remove the covering.

The 'exclamation mark' calls attention to features for which you should read the enclosed literature closely to prevent operating and maintenance problems.

WARNING: To reduce the risk of fire or electric shock, the device should not be exposed to rain or moisture and objects filled with liquids, such as vases, should not be placed on the device.

CAUTION: To prevent electric shock, fully insert the plug. (For regions with polarized plugs: To prevent electric shock, match wide blade to wide slot.)

### Important Safety Instructions

- Follow all instructions.
- Heed all warnings.
- Do not use this device near water.
- Clean only with dry cloth.
- Do not block any ventilation openings. Install in accordance with the manufacturer's instructions.
- Do not install near any heat sources such as radiators, heat registers, stoves, or other devices (including amplifiers) that produce heat.
- Protect the power cord from being walked on or pinched, particularly at plugs, convenience receptacles, and the point where they exit from the device.
- Only use attachments/accessories specified by the manufacturer.
- Use only with the cart, stand, tripod, bracket, or table specified by the manufacturer or sold with the device. When a cart is used, use caution when moving the cart/device combination to avoid injury from tip-over.
- Unplug this device during lightning storms or when unused for long periods of time.
- Refer all servicing to qualified service personnel. Servicing is required when the device has been damaged in any way, such as power-supply cord or plug is damaged, liquid has been spilled or objects have fallen into the device, the device has been exposed to rain or moisture, does not operate normally, or has been dropped.
- Battery usage CAUTION – To prevent battery leakage which may result in bodily injury, property damage, or damage to the unit:
  - Install all batteries correctly, + and - as marked on the unit.
    - Do not mix batteries (old and new or carbon and alkaline, etc.).
    - Batteries (packed or installed) shall not be exposed to excessive heat such as sunshine, fire or the like.
    - Remove batteries when the unit is not used for a long time.
  - The device shall not be exposed to dripping or splashing.
  - Do not place any sources of danger on the device (e.g. liquid filled objects, lighted candles).
  - Where the MAINS plug or an appliance coupler is used as the disconnect device, the disconnect device shall remain readily operable.



Specifications are subject to change without notice.  
2014 © WOOX Innovations Limited. All rights reserved.  
Philips and the Philips' Shield Emblem are registered trademarks of Koninklijke Philips N.V. and are used by WOOX Innovations Limited under license from Koninklijke Philips N.V.

BTM2310\_05\_Short User Manual\_V2.0

## Care for your product

- Do not insert any objects other than discs into the disc compartment.
- Do not insert warped or cracked discs into the disc compartment.
- Remove the discs from the disc compartment if you are not using the product for an extended period of time.
- Only use microfiber cloth to clean the product.

## Care for your environment

### Disposal of your old product and battery

Your product is designed and manufactured with high quality materials and components, which can be recycled and reused.



This symbol on a product means that the product is covered by European Directive 2012/19/EU.



This symbol means that the product contains batteries covered by European Directive 2013/56/EU which cannot be disposed of with normal household waste.



Inform yourself about the local separate collection system for electrical and electronic products and batteries. Follow local rules and never dispose of the product and batteries with normal household waste. Correct disposal of old products and batteries helps prevent negative consequences for the environment and human health.

### Removing the disposable batteries

To remove the disposable batteries, see battery installation section.

### Environmental information

All unnecessary packaging has been omitted. We have tried to make the packaging easy to separate into three materials: cardboard (box), polystyrene foam (buffer) and polyethylene (bags, protective foam sheet.)

Your system consists of materials which can be recycled and reused if disassembled by a specialized company. Please observe the local regulations regarding the disposal of packaging materials, exhausted batteries and old equipment.

## Important notes for users in the U.K.

### Mains fuse

This information applies only to products with a UK mains plug. This product is fitted with an approved molded plug. If you replace the fuse, use one with:

- the ratings shown on the plug,
- a BS 1362 approval, and
- the ASTA approval mark.

Contact your dealer if you are not sure about what type of fuse to use.

Caution: To conform with the EMC directive (2004/108/EC), do not detach the plug from the power cord.

### How to connect a plug

The wires in the power cord are colored as follows: blue = neutral (N), brown = live (L).

If the colors do not correspond with the colors on your plug, identify the terminals in your plug as follows:

- Connect the blue wire to the terminal marked N or colored black.
- Connect the brown wire to the terminal marked L or colored red.
- Do not connect either wire to the earth terminal in the plug, marked E (or e) or colored green (or green and yellow).

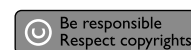
Before you replace the plug cover, make sure that the cord grip is clamped over the sheath of the cable and not just over the two wires in the cable.

### Copyright in the U.K.

Recording and playback of material may require consent, see Copyright Act 1956 and The performer's Protection Acts 1958 to 1972.

## Trademark notice

This item incorporates copy protection technology that is protected by U.S. patents and other intellectual property rights of Rovi Corporation. Reverse engineering and disassembly are prohibited.



The Bluetooth® word mark and logos are registered trademarks owned by Bluetooth SIG, Inc. and any use of such marks by WOOX Innovations is under license.

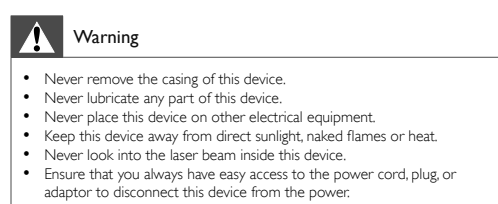
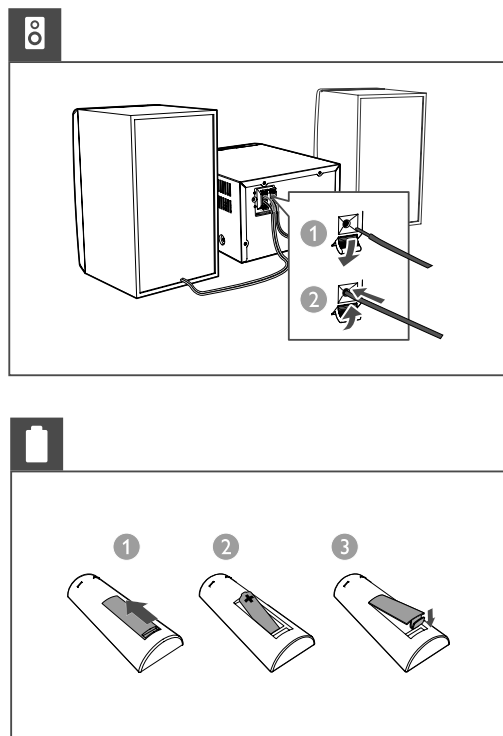
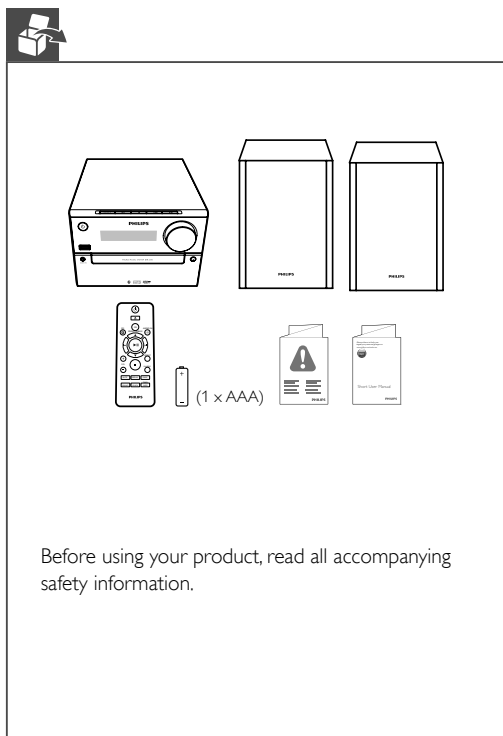


## Note

- The type plate is located on the back of the device.

## Copyright

2014 © WOOX Innovations Limited. All rights reserved. Specifications are subject to change without notice. WOOX reserves the right to change products at any time without being obliged to adjust earlier supplies accordingly.



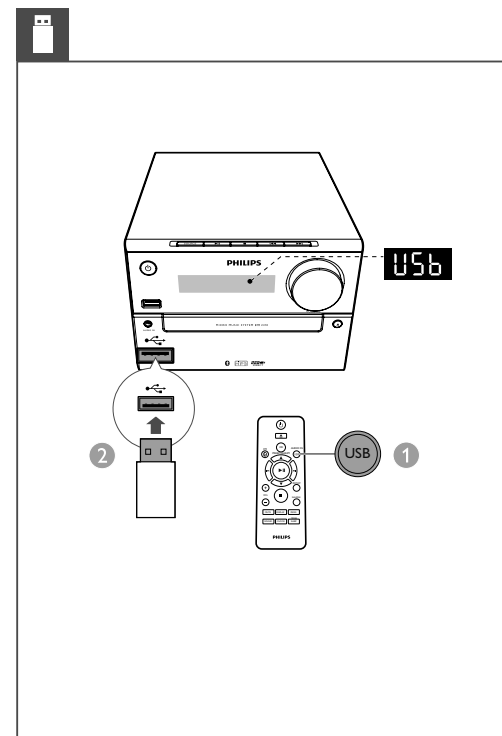
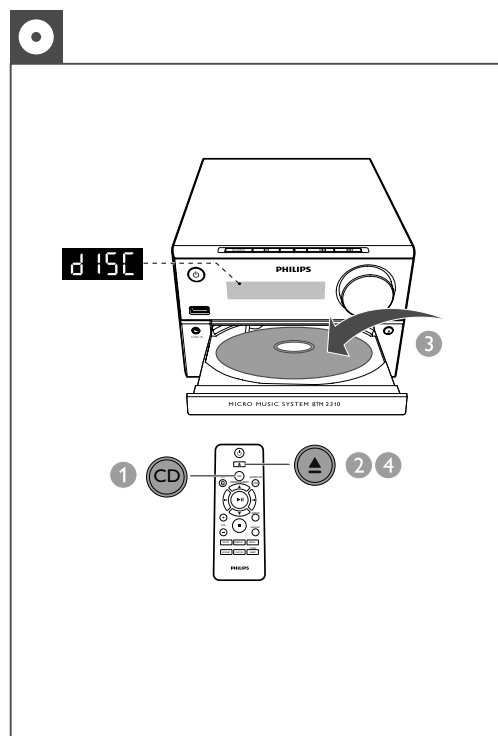
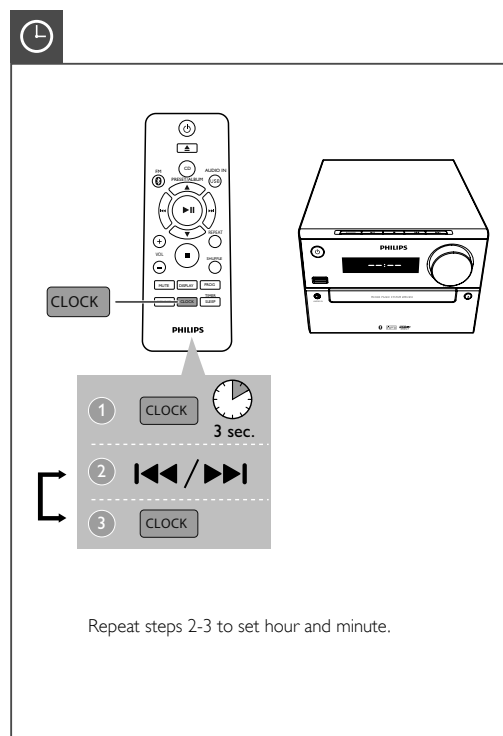
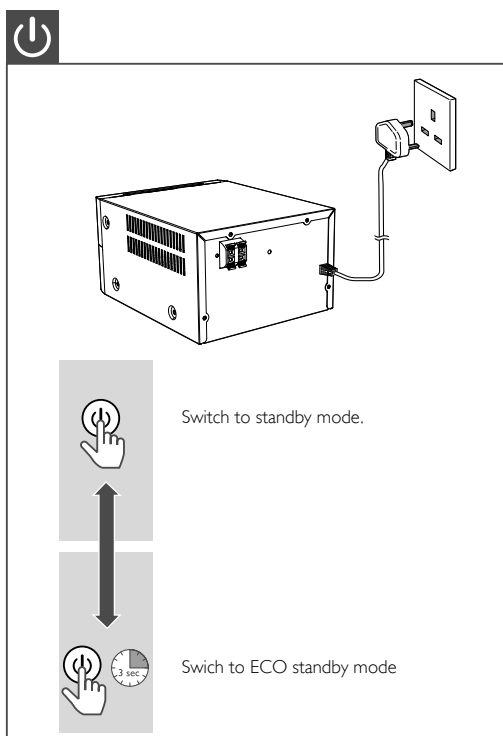
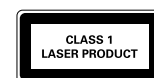
## Notice

Any changes or modifications made to this device that are not expressly approved by WOOX Innovations may void the user's authority to operate the equipment.

## Compliance

Hereby, WOOX Innovations declares that this product is in compliance with the essential requirements and other relevant provisions of Directive 1999/5/EC. You can find the Declaration of Conformity on www.philips.com/support. This apparatus includes this label:

CE 0890



### Control play

	Select a folder.
	Select an audio file.
	Pause or resume play.
	Stop play.
<b>REPEAT</b>	Play a track or all tracks repeatedly.
<b>SHUFFLE</b>	Play tracks randomly.
<b>VOL +/-</b>	Increase or decrease the volume.
<b>MUTE</b>	Mute or restore sound.
<b>SOUND</b>	Enrich sound effect with DSC: balanced, clear, powerful, warm, and bright.
<b>DISPLAY</b>	Adjust display brightness.

- Press **FM** repeatedly to select the **Bluetooth** source. **[BT]** (Bluetooth) is displayed. The Bluetooth indicator flashes blue.
- On your device, enable Bluetooth and search for Bluetooth devices that can be paired.
- Select **'Philips BTM2310'** on your Bluetooth enabled device and if necessary input '0000' as the pairing password. After successful pairing and connection, the Bluetooth indicator turns solid blue, and the unit beeps.
- Play audio on the connected device. Audio streams from your Bluetooth enabled device to this unit.

**To clear Bluetooth pairing history:**

- Press and hold for 8 seconds. The current Bluetooth is cleared.

**To disconnect the Bluetooth-enabled device:**

- Deactivate Bluetooth on your device; or
- Move the device beyond the communication range; or
- Press and hold for 3 seconds. The current Bluetooth connection is disconnected.

### Tune to FM radio stations

**Store FM radio stations automatically**  
In tuner mode, press and hold **PROG** for more than two seconds to activate automatic programming.

- All available stations are programmed in the order of waveband reception strength.
- The first programmed radio station is broadcast automatically.

**Store FM radio stations manually**

- Tune to a radio station.
- Press **PROG**, and then press to select a number from 1-20.
- Press **PROG** to confirm. The preset number and the frequency of the preset station are displayed.
- Repeat steps 2-3 to program more stations. To select a preset radio station, press .

- TIMER SLEEP** 3 sec.
- 
- TIMER SLEEP**

Repeat steps 2-3 to set minute, select a source (**CD, FM, or USB**), and adjust volume.

To download the full user manual, visit [www.philips.com/support](http://www.philips.com/support).

### Compatible USB devices

- USB flash memory (USB2.0 or USB1.1)
- USB flash players (USB2.0 or USB1.1)
- Memory cards (requires an additional card reader to work with this unit)

**Number of albums/ folders: maximum 99**  
**Number of tracks/titles: maximum 999**  
**File name in Unicode UTF8 (maximum length: 32 bytes)**

### Supported MP3 disc formats

- ISO9660, Joliet
- Maximum title number: 128 (depending on file name length)
- Maximum album number: 99
- Supported sampling frequencies: 32 kHz, 44.1 kHz, 48 kHz
- Supported Bit-rates: 32-256 (kbps), variable bit rates

### Unsupported USB formats:

- Empty albums: an empty album is an album that does not contain MP3/WMA files, and will not be shown in the display.
- Unsupported file formats are skipped. For example, word documents (.doc) or MP3 files with extension .dlf are ignored and not played.
- WMA, AAC, WAV, PCM audio files
- DRM protected WMA files (.wav, .m4a, .m4p, .mp4, .aac)
- WMA files in Lossless format

### Supported USB formats:

- USB or memory file format: FAT12, FAT16, FAT32 (sector size: 512 bytes)
- MP3 bit rate (data rate): 32-320 Kbps and variable bit rate
- Directory nesting up to a maximum of 8 levels

### Specifications

<b>Amplifier</b>	
Maximum Output Power	15 W
Frequency Response	60 Hz - 16 KHz; +3 dB
Signal to Noise Ratio	>70 dBA
Total Harmonic Distortion	<1%
Aux Input	800 mV RMS
<b>Speakers</b>	
Speaker Impedance	6 ohm
Speaker Driver	Full range 3"
Speaker Sensitivity	>83 dB/m/W
<b>Bluetooth</b>	
Bluetooth Version	V3.0
Bluetooth Frequency Band	2.4 GHz ~ 2.48 GHz ISM Band
Bluetooth Range	10 m (free space)
<b>Tuner (FM)</b>	
Tuner Tuning Range	87.5-108 MHz
Tuner Tuning grid	50 KHz
Tuner Sensitivity	
- Mono, 26dB S/N Ratio	<22 dBf
- Stereo, 46dB S/N Ratio	<45 dBf
Search Selectivity	<30 dBf
Total Harmonic Distortion	<3%
Signal to Noise Ratio	>45 dBA
<b>USB</b>	
USB Direct Version	2.0 full speed
USB 5 V Power	≤1 A
<b>Disc</b>	
Laser Type	Semiconductor
Disc Diameter	12 cm/8 cm
Support Disc	CD-DA, CD-R, CD-RW, MP3-CD
<b>Audio DAC</b>	
Audio DAC	24 Bits/44.1 KHz
Total Harmonic Distortion	<1% (1 KHz)
Frequency Response	60 Hz - 16 KHz; ±3 dB
S/N Ratio	>70 dBA
<b>General information</b>	
AC power	100-240 V~, 50/60 Hz
Operation Power	18 W
Consumption	
Eco Standby Power	<0.5 W
Consumption	
Dimensions	
- Main Unit (W x H x D)	180 x 121 x 247 mm
- Speaker Box (W x H x D)	150 x 238 x 125 mm
Weight	
- Main Unit	1.6 kg
- Speaker Box	2 x 0.98 kg