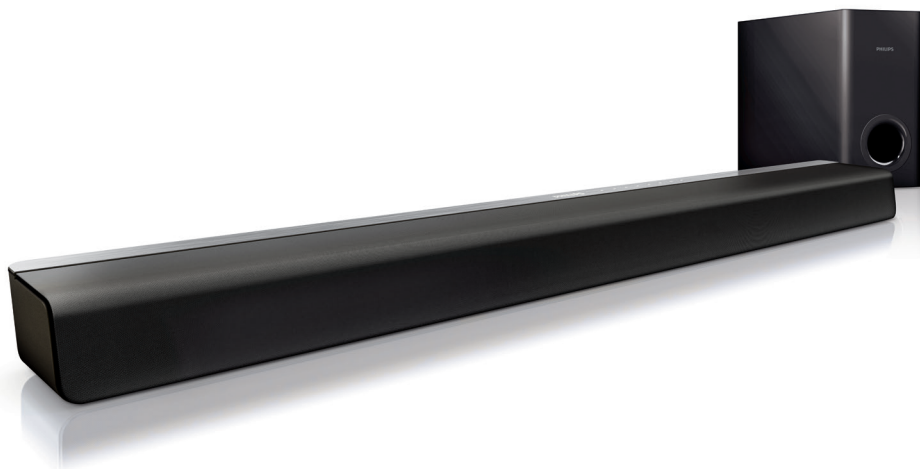


Always there to help you

Register your product and get support at
www.philips.com/support



CSS2133B



User manual

PHILIPS

Contents

1	Important	2
	Help and support	2
	Safety	2
	Care for your product	3
	Care of the environment	3

2	Your SoundBar	4
	Main unit	4
	Remote control	4
	Connectors	5

3	Connect	7
	Subwoofer	7
	Connect audio from TV and other devices	7

4	Use your SoundBar	8
	Play audio from TV or other devices	8
	Adjust the volume	8
	Choose your sound	9
	Night mode	9
	MP3 player	9
	Play audio through Bluetooth	9
	Auto standby	10
	Apply factory settings	10

5	Wall mount	11
----------	-------------------	----

6	Product specifications	11
----------	-------------------------------	----

7	Troubleshooting	12
----------	------------------------	----

1 Important

Read and understand all instructions before you use your product. If damage is caused by failure to follow instructions, the warranty does not apply.

Help and support

For extensive online support, visit www.philips.com/support to:

- download the user manual and the quick start guide
- watch video tutorials (available only for selected models)
- find answers to frequently answered questions (FAQs)
- email us a question
- chat with our support representative.

Follow the instructions on the website to select your language, and then enter your product model number.

Alternatively, you can contact Consumer Care in your country. Before you contact, note down the model number and serial number of your product. You can find this information on the back or bottom of your product.

Safety

Risk of electric shock or fire!

- Before you make or change any connections, make sure that all devices are disconnected from the power outlet.
- Never expose the product and accessories to rain or water. Never place liquid containers, such as vases, near the product. If liquids are spilt on or into the product, disconnect it from the power outlet immediately. Contact Consumer Care to have the product checked before use.

- Never place the product and accessories near naked flames or other heat sources, including direct sunlight.
- Never insert objects into the ventilation slots or other openings on the product.
- Where the mains plug or an appliance coupler is used as the disconnect device, the disconnect device shall remain readily operable.
- Batteries (battery pack or batteries installed) shall not be exposed to excessive heat such as sunshine, fire or the like.
- Disconnect the product from the power outlet before lightning storms.
- When you disconnect the power cord, always pull the plug, never the cable.

Risk of short circuit or fire!

- For identification and supply ratings, see the type plate at the back or bottom of the product.
- Before you connect the product to the power outlet, ensure that the power voltage matches the value printed on the back or bottom of the product. Never connect the product to the power outlet if the voltage is different.

Risk of injury or damage to this product!

- For wall mounting, this product must be securely attached to the wall in accordance with the installation instructions. Use only the supplied wall mount bracket (if available). Improper wall mounting may result in accident, injury or damage. If you have any query, contact Consumer Care in your country.
- Never place the product or any objects on power cords or on other electrical equipment.
- If the product is transported in temperatures below 5°C, unpack the product and wait until its temperature matches room temperature before connecting it to the power outlet.
- Parts of this product can be made of glass. Handle with care to avoid injury and damage.

Risk of overheating!

- Never install this product in a confined space. Always leave a space of at least four inches around the product for ventilation. Ensure curtains or other objects never cover the ventilation slots on the product.

Risk of contamination!

- Do not mix batteries (old and new or carbon and alkaline, etc.).
- Danger of explosion if batteries are incorrectly replaced. Replace only with the same or equivalent type.
- Remove batteries if they are exhausted or if the remote control is not to be used for a long time.
- Batteries contain chemical substances, they should be disposed of properly.

Risk of swallowing batteries!

- The product/remote control may contain a coin/button type battery, which can be swallowed. Keep the battery out of reach of children at all times! If swallowed, the battery can cause serious injury or death. Severe internal burns can occur within two hours of ingestion.
- If you suspect that a battery has been swallowed or placed inside any part of the body, seek immediate medical attention.
- When you change the batteries, always keep all new and used batteries out of reach of children. Ensure that the battery compartment is completely secure after you replace the battery.
- If the battery compartment cannot be completely secured, discontinue use of the product. Keep out of reach of children and contact the manufacturer.



This is CLASS II apparatus with double insulation, and no protective earth provided.

Care for your product

Use only microfiber cloth to clean the product.

Care of the environment

Disposal of your old product

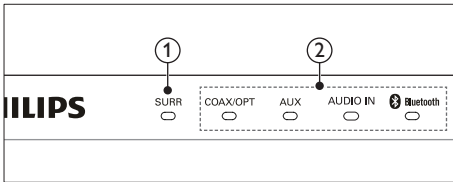


Your product is designed and manufactured with high quality materials and components, which can be recycled and reused. Do not throw away the product with the normal household waste at the end of its life, but hand it in at an official collection point or recycling. By doing this, you help to preserve the environment.

2 Your SoundBar

Congratulations on your purchase, and welcome to Philips! To fully benefit from the support that Philips offers, register your SoundBar at www.philips.com/welcome.

Main unit



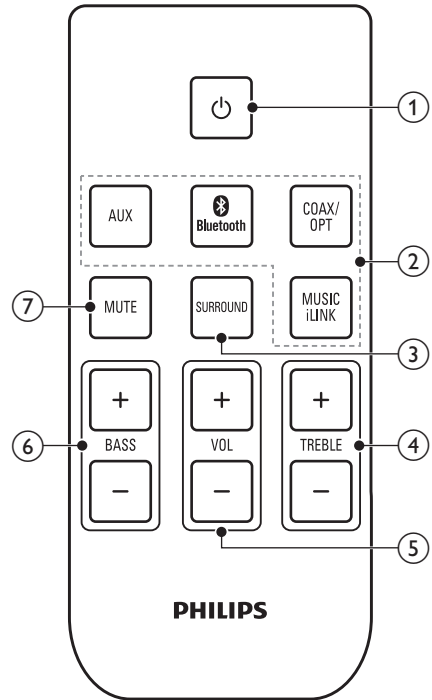
① SURR

Lights up when virtual surround mode is on.
Blinks three times when Dolby Digital audio is detected.

② Source indicators

- **COAX/OPT:** Lights up when you switch to coaxial or optical input source. Blinks when an unsupported audio format is detected.
- **AUX:** Lights up when you switch to analog input source.
- **AUDIO IN:** Lights up when you switch audio input source (3.5mm jack).
- **Bluetooth:** Lights up when you switch to Bluetooth mode and Bluetooth devices are paired; Blinks when you switch to Bluetooth mode and Bluetooth devices are not paired.

Remote control



① ⏻ (Standby-On)

Switch the SoundBar on or to standby.

② Source buttons

- **AUX:** Switch your audio source to the AUX connection.
- **Bluetooth:** Switch to Bluetooth mode.
- **COAX/OPT:** Switch your audio source to the coaxial or optical connection.
- **MUSIC iLINK (AUDIO IN):** Switch your audio source to the MP3 connection (3.5mm jack).

③ SURROUND

Switch virtual surround mode on or off.

④ TREBLE +/-

Increase or decrease treble.

- ⑤ **VOL +/-**
Increase or decrease volume.
- ⑥ **BASS +/-**
Increase or decrease bass.
- ⑦ **MUTE**
Mute or restore volume.

Replace battery



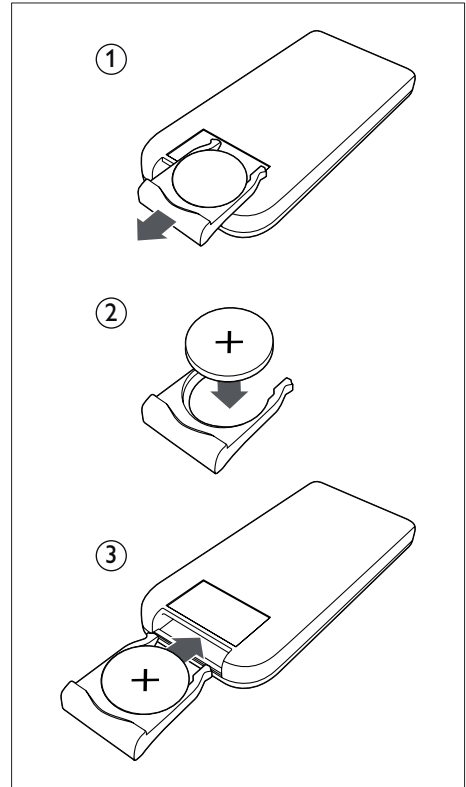
Warning

- Danger of explosion if battery is incorrectly replaced. Replace only with the same or equivalent type.
- The product/remote control may or may not contain a coin/button type battery, which can be swallowed. Keep the battery out of reach of children at all times!



Caution

- The battery contains perchlorate material, handle it with care. For information see www.dtsc.ca.gov/hazardouswaste/perchlorate.

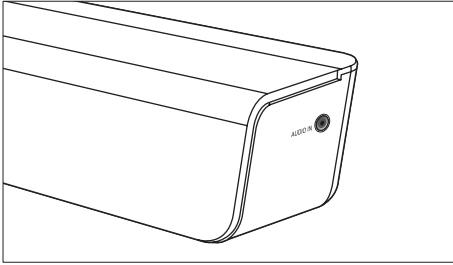


- 1 Open the battery compartment.
- 2 Insert one CR2025 battery, with the polarity (+/-) as indicated.
- 3 Close the battery compartment.

Connectors

This section includes an overview of the connectors available on your SoundBar.

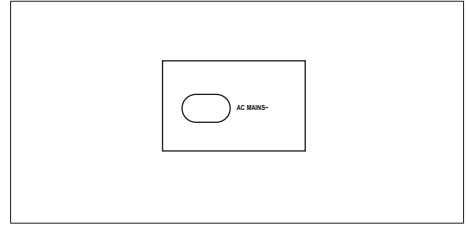
Side right



AUDIO IN

Audio input from, for example, an MP3 player (3.5mm jack).

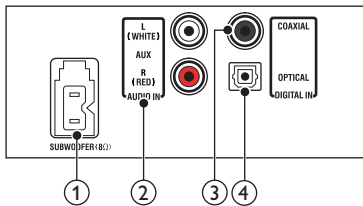
Rear right



AC MAINS~

Connect to the power supply.

Rear left



- ① **SUBWOOFER**
Connect to the supplied subwoofer.
- ② **AUDIO IN-AUX**
Connect to an analog audio output on the TV or an analog device.
- ③ **DIGITAL IN-COAXIAL**
Connect to a coaxial audio output on the TV or a digital device.
- ④ **DIGITAL IN-OPTICAL**
Connect to an optical audio output on the TV or a digital device.

3 Connect

This section helps you connect your SoundBar to a TV and other devices.

For information about the basic connections of your SoundBar and accessories, see the quick start guide.

Note

- For identification and supply ratings, refer to the type plate at the back or bottom of the product.
- Before you make or change any connections, make sure that all devices are disconnected from the power outlet.

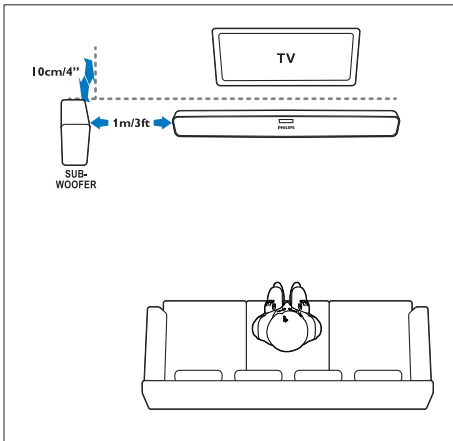
Subwoofer

Follow the steps below to position and connect your subwoofer:

Position

Place the subwoofer at least one meter (three feet) away from either to the left or right of your SoundBar, and ten centimeter away from the wall.

For best results, place your subwoofer as shown below.



Connect

Connect your subwoofer to your SoundBar as described in the quick start guide.

Connect audio from TV and other devices

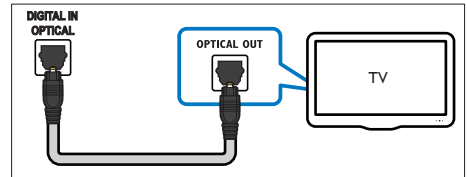
Play audio from TV or other devices through your SoundBar. Use the best quality connection available on other devices.

The audio connections in this user manual are only recommendations. You can use other connections too.

If you play audio from the TV through the SoundBar, make sure that the TV is muted.

Option 1: Connect audio through a digital optical cable

Best quality audio

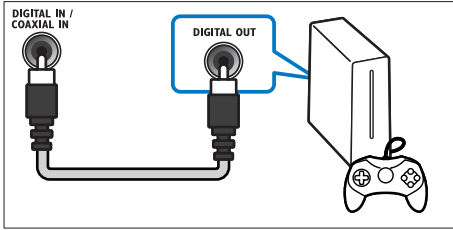


1 Using an optical cable, connect the **OPTICAL** connector on your SoundBar to the **OPTICAL OUT** connector on the TV or other device.

- The digital optical connector might be labeled **SPDIF** or **SPDIF OUT**.

Option 2: Connect audio through a digital coaxial cable

Best quality audio

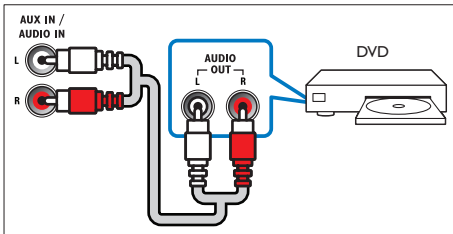


- 1 Using a coaxial cable, connect the **COAXIAL** connector on your SoundBar to the **COAXIAL/DIGITAL OUT** connector on the TV or other device.
 - The digital coaxial connector might be labeled **DIGITAL AUDIO OUT**.

Option 3: Connect audio through analog audio cables

Basic quality audio

- 1 Using an analog cable, connect the **AUX** connectors on your SoundBar to the **AUDIO OUT** connectors on the TV or other device.



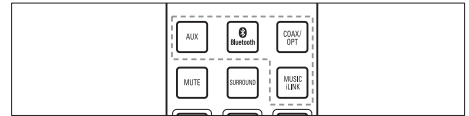
4 Use your SoundBar

This section helps you use the SoundBar to play audio from connected devices.

Before you start

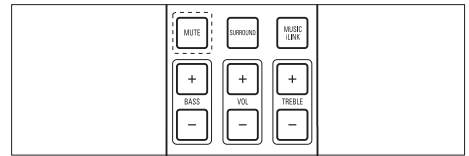
- Make the necessary connections described in the quick start guide and the user manual.
- Switch the SoundBar to the correct source for other devices.

Play audio from TV or other devices



Press the **Source** buttons to select the audio output of the connected device.

Adjust the volume



To increase or decrease volume, press **VOL +/-**.

- The **Source** indicators on the front panel blink once when the volume is set to either minimum or maximum.

To mute sound, press **MUTE**.

- The current **Source** indicator on the front panel blinks continuously.

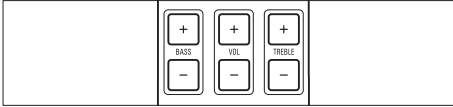
To restore the sound, press **MUTE** again or press **VOL +/-**.

Choose your sound

This section helps you choose the ideal sound for your music.

Change treble or bass

Change the high frequency (treble) or low frequency (bass) settings of the SoundBar to suit your music.



Press **TREBLE +/-** or **BASS +/-** to increase or decrease treble or bass.

- The **Source indicators** on the front panel blink once when the treble or bass is set to either minimum or maximum.

Surround sound mode

Experience an immersive audio experience with surround sound modes.



Press **SURROUND** repeatedly to switch surround mode on or off.

- ↳ When surround mode is on, the **SURR** on the front panel lights up.

Night mode

For quiet listening, night mode decreases the volume of loud sounds when audio is played. Night mode is only available for Dolby Digital soundtracks.

- 1 Press and hold **SURROUND** for three seconds to turn night mode on or off.
 - ↳ When night mode is turned on, the **AUX** indicator on the front panel blinks twice.
 - ↳ When night mode is turned off, the **MUSIC iLINK** indicator on the front panel blinks twice.

MP3 player

Connect your MP3 player to play your audio files or music.

What you need

- An MP3 player.
- A 3.5mm stereo audio cable.

- 1 Using the 3.5mm stereo audio cable, connect the MP3 player to the **AUDIO IN** connector on your SoundBar.
- 2 Press **MUSIC iLINK (AUDIO IN)** on the remote control.
 - ↳ **AUDIO IN** indicator on the front panel lights up.
- 3 Press the buttons on the MP3 player to select and play audio files or music.

Play audio through Bluetooth

Through Bluetooth, connect the SoundBar with your Bluetooth device (such as an iPad, iPhone, iPod touch, Android phone, or laptop), and then you can listen to the audio files stored on the device through your SoundBar speakers.

What you need

- A Bluetooth device which supports Bluetooth profile A2DP, and with Bluetooth version as 3.0 + EDR.
- The operational range between the SoundBar and a Bluetooth device is approximately 10 meters (30 feet).

- 1 Press **Bluetooth** on the remote control to switch the SoundBar to Bluetooth mode.
 - ↳ The **Bluetooth** indicator blinks.
- 2 On the Bluetooth device, switch on Bluetooth, search for and select **Philips CSS2133B** to start connection (see the user manual of the Bluetooth device on how to enable Bluetooth).
 - ↳ During connection, the **Bluetooth** indicator blinks.
- 3 Wait until you hear a beep sound from the SoundBar:
 - ↳ When the Bluetooth connection succeeds, and the **Bluetooth** indicator lights up.
 - ↳ If the connection fails, the **Bluetooth** indicator blinks continually.
- 4 Select and play audio files or music on your Bluetooth device.
 - During play, if a call is coming, music play is paused. Play resumes when the call ends.
- 5 To exit Bluetooth, select other source.
 - When you switch back to Bluetooth mode, Bluetooth connection remains active.

Note

- The music streaming may be interrupted by obstacles between the device and SoundBar; such as wall, metallic casing that covers the device, or other devices nearby that operate in the same frequency.
- If you want to connect your SoundBar with another Bluetooth device, press and hold **Bluetooth** on the remote control to disconnect the currently connected Bluetooth device.
- Philips does not guarantee 100% compatibility with all Bluetooth devices.

Auto standby

When playing media from a connected device, the SoundBar automatically switches to standby if:

- no source button is pressed for 30 minutes, and
- no audio playback is detected from a connected device.

Apply factory settings

You can reset your SoundBar to the default settings programmed at the factory.

- 1 Press **BASS+**, **VOL-**, and **Treble+** within three seconds.
 - ↳ When the factory settings restore is complete, the SoundBar automatically switches off and restarts.

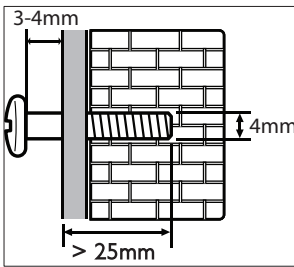
5 Wall mount

Note

- Before wall mounting, make sure the wall can support the weight of this product.
- For wall mounting, this product must be securely attached to the wall in accordance with the installation instructions. Improper wall mounting may result in accident, injury or damage. If you have any query, contact Consumer Care in your country.
- Before wall mount, you need not remove the two rubber feet at the bottom of this product, otherwise the rubber feet cannot be fixed back.

Screw length/diameter

Depending on the type of wall mounting this product, make sure that you use screws of a suitable length and diameter.



See the illustration in the quick start guide on how to wall mount this product.

- 1) Drill two holes on the wall.
- 2) Secure the dowels and screws in the holes.
- 3) Hang this product on the fastening screws.

6 Product specifications

Note

- Specifications and design are subject to change without notice.

Amplifier

- RMS total output power: 60W (+/- 0.5 dB, 30% THD)
- Frequency response: 20 Hz-20 kHz / ± 3 dB
- Signal-to-noise ratio: > 65 dB (CCIR) / (A-weighted)
- Input sensitivity:
 - AUX: 600 mV
 - AUDIO IN: 250 mV

Audio

- S/PDIF Digital audio input:
 - Coaxial: IEC 60958-3
 - Optical: TOSLINK

Bluetooth

- Bluetooth profiles: A2DP
- Bluetooth version: 3.0 + EDR

Main unit

- Power supply: 110-240V~, 50-60 Hz
- Power consumption: 20 W
- Standby power consumption: ≤ 0.5 W
- Speaker impedance: 4 ohm woofer, 4 ohm tweeter
- Speaker drivers: 25 x 120 mm (1 x 5") woofer, 38 mm (1.5") tweeter
- Frequency response: 150 Hz-20 kHz
- Dimensions (W x H x D): 708 x 47 x 65 mm
- Weight: 1.1 kg

Subwoofer

- Impedance: 8 ohm
- Speaker drivers: 130 mm (5.25") woofer
- Frequency response: 20 Hz-150 Hz
- Dimensions (W x H x D):
165 x 240 x 295 mm
- Weight: 2.6 kg
- Cable length: 3 m

Remote control batteries

- 1 x CR2025

7 Troubleshooting



Warning

- Risk of electric shock. Never remove the casing of the product.

To keep the warranty valid, never try to repair the product yourself.

If you have problems using this product, check the following points before you request service. If you still have a problem, get support at www.philips.com/support.

Sound

No sound from SoundBar speakers.

- Connect the correct audio cable from your SoundBar to your TV or other devices.
- On your SoundBar remote control, press the **Source buttons** to select the correct audio input.
- Make sure that the SoundBar is not muted. Press **VOL +/-** to restore the sound.

Distorted sound or echo.

- If you play audio from the TV through the SoundBar, make sure that the TV is muted.

Bluetooth

A device cannot connect with the SoundBar.

- The device does not support the compatible profiles required for the SoundBar.
- You have not enabled the Bluetooth function of the device. See the user manual of the device on how to enable the function.
- The device is not correctly connected. Connect the device correctly.
- The SoundBar is already connected with another Bluetooth device. Disconnect the connected device, then try again.

Quality of audio play from a connected Bluetooth device is poor.

- The Bluetooth reception is poor. Move the device closer to the SoundBar; or remove any obstacle between the device and the SoundBar.

The connected Bluetooth device connects and disconnects constantly.

- The Bluetooth reception is poor. Move the device closer to the SoundBar; or remove any obstacle between the device and the SoundBar.
- Turn off Wi-Fi function on the Bluetooth device to avoid interference.
- For some Bluetooth, the Bluetooth connection can be deactivated automatically to save power. This does not indicate any malfunction of the SoundBar.



Manufactured under license from Dolby Laboratories. Dolby and the double-D symbol are trademarks of Dolby Laboratories.



The Bluetooth® word mark and logos are registered trademarks owned by Bluetooth SIG, Inc. and any use of such marks by Gibson Innovations Limited is under license. Other trademarks and trade names are those of their respective owners.



Specifications are subject to change without notice

2015 © Gibson Innovations Limited. All rights reserved.

This product has been manufactured by, and is sold under the responsibility of Gibson Innovations Ltd., and Gibson Innovations Ltd. is the warrantor in relation to this product. Philips and the Philips Shield Emblem are registered trademarks of Koninklijke Philips N.V. and are used under license from Koninklijke Philips N.V.

CSS2133B_98_UM_V1.0

