

# Always there to help you

Register your product and get support at  
[www.philips.com/support](http://www.philips.com/support)



HTL2101A



# User manual

# PHILIPS



# Contents

---

<b>1</b>	<b>Important</b>	<b>2</b>
	Help and support	2
	Safety	2
	Care for your product	3
	Care of the environment	3

---

<b>2</b>	<b>Your SoundBar</b>	<b>4</b>
	Main unit	4
	Remote control	4
	Connectors	5

---

<b>3</b>	<b>Connect</b>	<b>6</b>
	Connect audio from TV and other devices	6

---

<b>4</b>	<b>Use your SoundBar</b>	<b>7</b>
	Adjust the volume	7
	Choose your sound	7
	MP3 player	7
	USB storage devices	7
	Apply factory settings	8
	Update software	8

---

<b>5</b>	<b>Wall mount</b>	<b>8</b>
----------	-------------------	----------

---

<b>6</b>	<b>Product specifications</b>	<b>9</b>
----------	-------------------------------	----------

---

<b>7</b>	<b>Troubleshooting</b>	<b>10</b>
----------	------------------------	-----------

# 1 Important

Read and understand all instructions before you use your product. If damage is caused by failure to follow instructions, the warranty does not apply.

---

## Help and support

For extensive online support, visit [www.philips.com/support](http://www.philips.com/support) to:

- download the user manual and the quick start guide
- watch video tutorials (available only for selected models)
- find answers to frequently answered questions (FAQs)
- email us a question
- chat with our support representative.

Follow the instructions on the website to select your language, and then enter your product model number.

Alternatively, you can contact Consumer Care in your country. Before you contact, note down the model number and serial number of your product. You can find this information on the back or bottom of your product.

---

## Safety

### **Risk of electric shock or fire!**

- Never expose the product and accessories to rain or water. Never place liquid containers, such as vases, near the product. If liquids are spilt on or into the product, disconnect it from the power outlet immediately. Contact Consumer Care to have the product checked before use.
- Never place the product and accessories near naked flames or other heat sources, including direct sunlight.

- Never insert objects into the ventilation slots or other openings on the product.
- Where the mains plug or an appliance coupler is used as the disconnect device, the disconnect device shall remain readily operable.
- Disconnect the product from the power outlet before lightning storms.
- When you disconnect the power cord, always pull the plug, never the cable.

### **Risk of short circuit or fire!**

- Before you connect the product to the power outlet, ensure that the power voltage matches the value printed on the back or bottom of the product. Never connect the product to the power outlet if the voltage is different.

### **Risk of injury or damage to this product!**

- Never place the product or any objects on power cords or on other electrical equipment.
- If the product is transported in temperatures below 5°C, unpack the product and wait until its temperature matches room temperature before connecting it to the power outlet.
- Parts of this product can be made of glass. Handle with care to avoid injury and damage.

### **Risk of overheating!**

- Never install this product in a confined space. Always leave a space of at least four inches around the product for ventilation. Ensure curtains or other objects never cover the ventilation slots on the product.

### **Risk of contamination!**

- Do not mix batteries (old and new or carbon and alkaine, etc.).
- Danger of explosion if batteries are incorrectly replaced. Replace only with the same or equivalent type.
- Remove batteries if they are exhausted or if the remote control is not to be used for a long time.

- Batteries contain chemical substances, they should be disposed of properly.

### Risk of swallowing batteries!

- The product/remote control may contain a coin/button type battery, which can be swallowed. Keep the battery out of reach of children at all times! If swallowed, the battery can cause serious injury or death. Severe internal burns can occur within two hours of ingestion.
- If you suspect that a battery has been swallowed or placed inside any part of the body, seek immediate medical attention.
- When you change the batteries, always keep all new and used batteries out of reach of children. Ensure that the battery compartment is completely secure after you replace the battery.
- If the battery compartment cannot be completely secured, discontinue use of the product. Keep out of reach of children and contact the manufacturer.



This is CLASS II apparatus with double insulation, and no protective earth provided.



When this crossed-out wheeled bin symbol is attached to a product it means that the product is covered by the European Directive 2002/96/EC. Please inform yourself about the local separate collection system for electrical and electronic products.

Please act according to your local rules and do not dispose of your old products with your normal household waste.

Correct disposal of your old product helps to prevent potential negative consequences for the environment and human health.



Your product contains batteries covered by the European Directive 2006/66/EC, which cannot be disposed with normal household waste. Please inform yourself about the local rules on separate collection of batteries because correct disposal helps to prevent negative consequences for the environmental and human health.

---

## Care for your product

Use only microfiber cloth to clean the product.

---

## Care of the environment



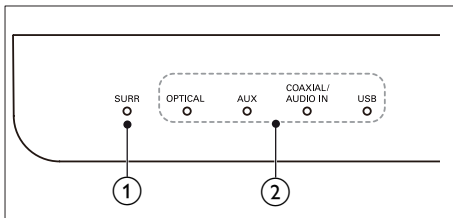
Your product is designed and manufactured with high quality materials and components, which can be recycled and reused.

## 2 Your SoundBar

Congratulations on your purchase, and welcome to Philips! To fully benefit from the support that Philips offers, register your SoundBar at [www.philips.com/welcome](http://www.philips.com/welcome).

### Main unit

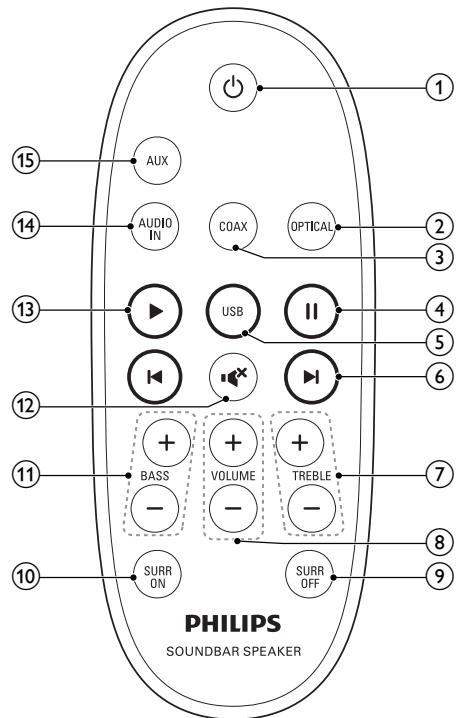
This section includes an overview of the main unit.



- ① **SURR indicator**  
Lights up when you select Virtual Surround sound.
- ② **Source indicators**  
Source indicator lights up when a source is selected.
  - **OPTICAL:** Lights up when you switch to optical input source.
  - **AUX:** Lights up when you switch to analog input source.
  - **COAXIAL/AUDIO IN:** Lights up when you switch to coaxial or audio input source (3.5mm jack).
  - **USB:** Lights up when you switch to the USB source.

### Remote control

This section includes an overview of the remote control.



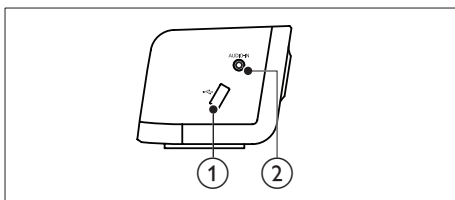
- ① **⏻ (Standby-On)**  
Switch the SoundBar on or to standby.
- ② **OPTICAL**  
Switch your audio source to the optical connection.
- ③ **COAX**  
Switch your audio source to the coaxial connection.
- ④ **⏸**  
Pause play.

- ⑤ **USB**  
Switch your audio source to the USB connection.
- ⑥ **⏮ / ⏭**  
Skip to the previous or next track, chapter or file.
- ⑦ **TREBLE +/-**  
Increase or decrease treble.
- ⑧ **VOLUME +/-**  
Increase or decrease volume.
- ⑨ **SURR OFF**  
Turn off the virtual surround sound.
- ⑩ **SURR ON**  
Turn on the virtual surround sound.
- ⑪ **BASS +/-**  
Increase or decrease bass.
- ⑫ **🔊**  
Mute or restore volume.
- ⑬ **▶**  
Start or resume play.
- ⑭ **AUDIO IN**  
Switch your audio source to audio input connection (3.5mm jack).
- ⑮ **AUX**  
Switch your audio source to the AUX connection.

## Connectors

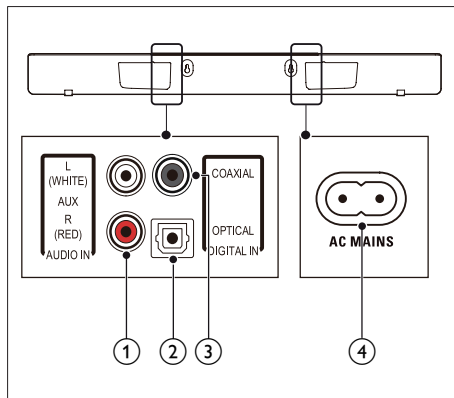
This section includes an overview of the connectors available on your SoundBar:

### Side right



- ① **🔌 (USB)**  
Audio input from a USB storage device.
- ② **AUDIO IN**  
Audio input from an MP3 player (3.5mm jack).

### Rear connectors



- ① **AUDIO IN-AUX**  
Connect to an analog audio output on the TV or an analog device.
- ② **DIGITAL IN-OPTICAL**  
Connect to an optical audio output on the TV or a digital device.
- ③ **DIGITAL IN-COAXIAL**  
Connect to a coaxial audio output on the TV or a digital device.
- ④ **AC MAINS~**  
Connect to the power supply.

# 3 Connect

This section helps you connect your SoundBar to a TV and other devices.

For information about the basic connections of your SoundBar and accessories, see the quick start guide.

## Note

- For identification and supply ratings, refer to the type plate at the back or bottom of the product.
- Before you make or change any connections, make sure that all devices are disconnected from the power outlet.

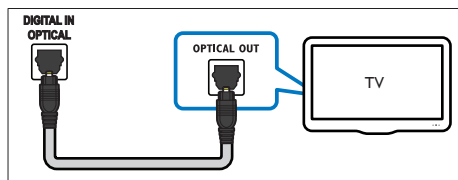
## Connect audio from TV and other devices

Play audio from TV or other devices through your Soundbar.

Use the best quality connection available on your TV and other devices.

### Option 1: Connect audio through a digital optical cable

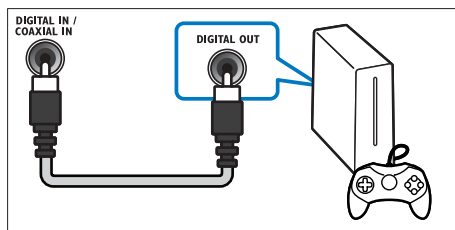
Best quality audio



- 1 Using an optical cable, connect the **OPTICAL** connector on your SoundBar to the **OPTICAL OUT** connector on the TV or other device.
  - The digital optical connector might be labeled **SPDIF** or **SPDIF OUT**.

### Option 2: Connect audio through a digital coaxial cable

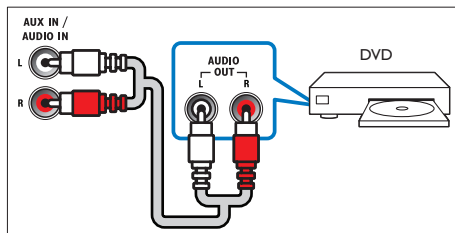
Good quality audio



- 1 Using a coaxial cable, connect the **COAXIAL** connector on your SoundBar to the **COAXIAL/DIGITAL OUT** connector on the TV or other device.
  - The digital coaxial connector might be labeled **DIGITAL AUDIO OUT**.

### Option 3: Connect audio through analog audio cables

Basic quality audio



- 1 Using an analog cable, connect the **AUX** connectors on your SoundBar to the **AUDIO OUT** connectors on the TV or other device.



## 4 Use your SoundBar

This section helps you use the SoundBar to play audio from connected devices.

### Before you start

- Make the necessary connections described in the Quick Start Guide or download the User Manual from [www.philips.com/support](http://www.philips.com/support).
- Switch the SoundBar to the correct source for other devices.

---

### Adjust the volume

- 1 Press **VOLUME +/-** to increase or decrease a volume level.
- ② To mute sound, press **MUTE**.
- ③ To restore the sound, press **MUTE** again or press **VOLUME +/-**.
  - ↳ All **Source indicators** on the main unit blink twice when a volume is set to the maximum or minimum value.

---

### Choose your sound

This section helps you choose the ideal sound for your video or music.

---

### Surround sound mode

Experience an immersive audio experience with surround sound modes.

- 1 Press **SURR ON / SURR OFF** to turn on or turn off the virtual surround sound.

---

### Equalizer

Change the high frequency (treble) and low frequency (bass) settings of the SoundBar.

- 1 Press **TREBLE +/-** or **BASS +/-** to change the frequency.
  - ↳ All **Source indicators** on the main unit blink twice when treble or bass is set to the maximum or minimum value.

---

### MP3 player

Connect your MP3 player to play your audio files or music.

#### What you need

- An MP3 player.
- A 3.5mm stereo audio cable.

- 1 Using the 3.5mm stereo audio cable, connect the MP3 player to the **AUDIO IN** connector on your SoundBar.
- 2 Press **AUDIO IN**.
- 3 Press the buttons on the MP3 player to select and play audio files or music.

---

### USB storage devices

Enjoy audio on a USB storage device, such as an MP3 player and USB flash memory, etc.

#### What you need

- A USB storage device that is formatted for FAT file systems, and complies with the Mass Storage Class.
- An MP3 or WMA file on a USB storage device

- 1 Connect a USB storage device to the SoundBar.
- 2 Press **USB** on the remote control.
  - ↳ The play starts after a few seconds.

## Note

- This product may not be compatible with certain types of USB storage device.
- If you use a USB extension cable, USB HUB, or USB multi-reader; the USB storage device may not be recognized.
- Digital camera PTP protocols are not supported.
- Do not remove the USB storage device while it is being read.
- DRM-protected music files (MP3, WMA) are not supported.
- Support a USB port: 5V  $\pm$  5%, 500mA.

## Apply factory settings

You can reset your SoundBar to the default setting mode.

- 1 In mute mode, quickly press **AUX** twice.  
↳ The factory settings is restored.

## Update software

To continually improve the product, software upgrade may be offered. Visit [www.philips.com/support](http://www.philips.com/support) to check if the latest software version is available.

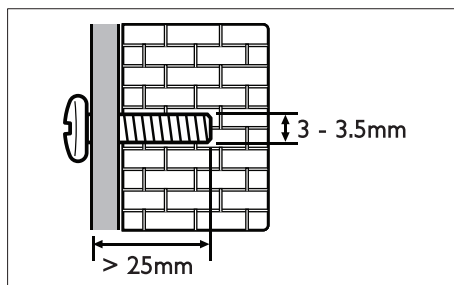
# 5 Wall mount

## Note

- Gibson Innovations bears no responsibility for improper wall mounting that results in accident, injury or damage. If you have any query, contact Consumer Care in your country.
- Before wall mounting, make sure the wall can support the weight of your SoundBar.

### Screw length/diameter

Depending on the type of wall mounting your SoundBar, make sure that you use screws of a suitable length and diameter:



For information about how to wall mount your SoundBar, see the quick start guide.

# 6 Product specifications

## Note

- Specifications and design are subject to change without notice.

## Amplifier

- Total output power:  
40 W RMS (+/- 0.5 dB, 10% THD)
- Frequency response: 20 Hz-20 kHz /  $\pm 3$  dB
- Signal-to-noise ratio: > 65 dB (CCIR) / (A-weighted)
- Input sensitivity:
  - AUX: 650 mV
  - AUDIO-IN: 400 mV

## Audio

- S/PDIF Digital audio input:
  - Coaxial: IEC 60958-3
  - Optical: TOSLINK
- Sampling frequency:
  - MP3: 8 kHz, 11 kHz, 12 kHz, 16 kHz, 22 kHz, 24 kHz, 32 kHz, 44.1 kHz, 48 kHz
  - WMA: 44.1 kHz, 48 kHz
- Constant bit rate:
  - MP3: 8 kbps-320 kbps
  - WMA: 64 kbps-192 kbps
- Version:
  - WMA: V7, V8, V9

## USB

- Compatibility: Hi-Speed USB (2.0)
- Class support: USB Mass Storage Class (MSC)
- File system: FAT16 and FAT32
- Supports MP3 and WMA file formats

## Main unit

- Power supply: 110-240 V~, 50-60 Hz
- Power consumption: 40 W
- Standby power consumption:  $\leq 0.5$  W
- Speaker impedance: 8 ohm (full range)
- Speaker drivers: 4 x 54.5 mm (2")
- Dimensions (WxHxD):  
845 x 74.5 x 94 mm
- Weight: 2.0 kg

## Remote control batteries

- 1 x CR2025

# 7 Troubleshooting



## Warning

- Risk of electric shock. Never remove the casing of the product.

To keep the warranty valid, never try to repair the product yourself.

If you have problems using this product, check the following points before you request service.

If you still have a problem, get support at [www.philips.com/support](http://www.philips.com/support).

---

## Main unit

**The buttons on the SoundBar do not work.**

- Disconnect the SoundBar from the power supply for a few minutes, then reconnect.

---

## Sound

**No sound from SoundBar speakers.**

- Connect the audio cable from your SoundBar to your TV or other devices.
- Reset your SoundBar to its factory settings.
- On the remote control, select the correct audio input.
- Make sure that the SoundBar is not muted.

**Distorted sound or echo.**

- If you play audio from the TV through the SoundBar, make sure that the TV is muted.



Manufactured under license from Dolby Laboratories. Dolby and the double-D symbol are trademarks of Dolby Laboratories.



Specifications are subject to change without notice

2016 © Gibson Innovations Limited. All rights reserved.

This product has been manufactured by, and is sold under the responsibility of Gibson Innovations Ltd., and Gibson Innovations Ltd. is the warrantor in relation to this product. Philips and the Philips Shield Emblem are registered trademarks of Koninklijke Philips N.V. and are used under license from Koninklijke Philips N.V.

HTL2101A\_79\_UM\_V3.0

