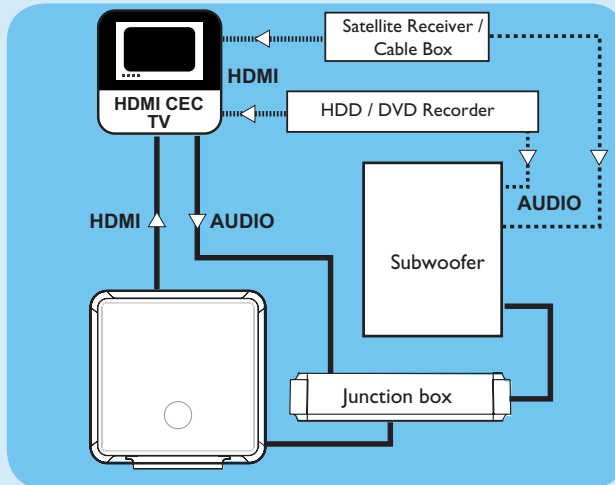


3 Enjoy

EasyLink control

This feature is only applicable if this DVD Home Theatre unit is connected to HDMI CEC compliant TV/device using HDMI cable. It enables all the linked devices response or react to certain commands simultaneously with one touch control.



- 1 Turn on the HDMI CEC operations on your TV and other connected devices. See TVs/devices manual for details.
- 2 You can now enjoy the EasyLink controls.

One touch play [Auto Wake-up TV]

- 1 Press PLAY.
It turns on this unit and start disc play (if a video disc is detected), and your TV automatically turns on and switches to the correct viewing channel.

Note This is only possible if this unit is in standby mode. If this unit is in active mode, you have to press DISC followed by PLAY to start disc play.

One touch power off [System Standby]

- 1 Press and hold .
It turns off all linked devices.

Note This unit responds to standby command from other HDMI CEC compliant TV/devices.

One touch audio input switching

This unit is able to render the audio signals from the active source and switch automatically to the corresponding audio input.

Before you can enjoy this feature, connect audio cables from this unit to your TV/devices and follow the instructions below to map the audio inputs to the connected devices.

- 1 Press **DISC**.
- 2 Press **OPTIONS**.
- 3 Press .
- 4 Select [EasyLink], then press .

General Setup	
	EasyLink
	Disc Lock
	Display Dim
	OSD Language
	Screen Saver
	Sleep Timer
	Standby Mode
	DivX(R) VOD Code
	Auto Wake-up TV
	System Standby
	System Audio Control
	Audio Input Mapping

- 5 Select [System Audio Control] > [On], then press **OK**.
- 6 Select [Audio Input Mapping], then press **OK**.
- 7 Select [OK] in the menu, then press **OK** to start scanning of devices.
- 8 When scanning complete, select the audio input of this unit that is used to connect to your TV/device (e.g. AUX1 Input), then press .
- 9 Select the TV/device (appeared in its brand name) in the right panel, then press **OK**.
- 10 Repeat steps 8~9 to map other connected devices.
- 11 To exit the menu, press **OPTIONS**.

Note Philips does not guarantee 100% interoperability with all HDMI CEC compliant devices.

Register your product and get support at
www.philips.com/welcome

HTS9810



- 1 Connect
- 2 Set up
- 3 Enjoy

Quick Start Guide

What's in the box?



Need help?

User Manual
See the user manual that came with your Philips DVD Home Theater System.



2008 © Philips Consumer Lifestyle
All rights reserved.
12nc: 3139 245 30981
sgpip_828/12-eng1

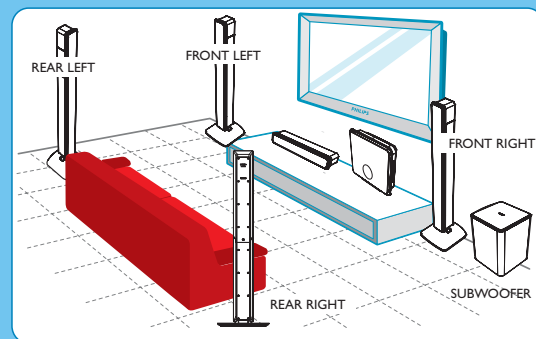
PHILIPS

1 Connect

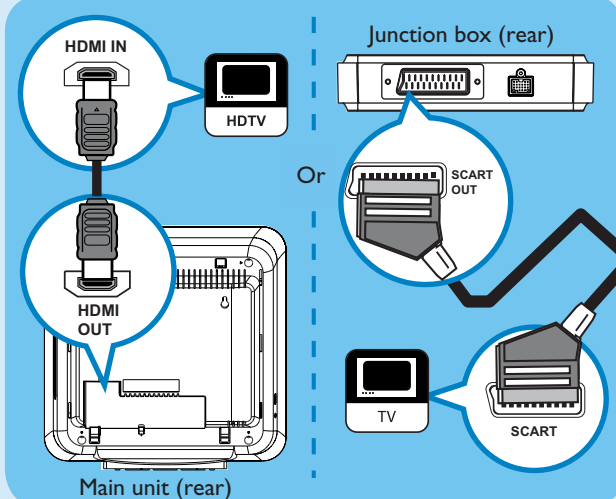
Basic connection

A Placement

Proper speakers system placement is important to ensure optimum sound performance.



B Connect to TV



If your TV supports HDMI

- 1 Remove the main unit cover by pushing it upwards and outwards.
- 2 Connect the HDMI cable from the HDMI OUT socket to the HDMI IN socket on your TV.

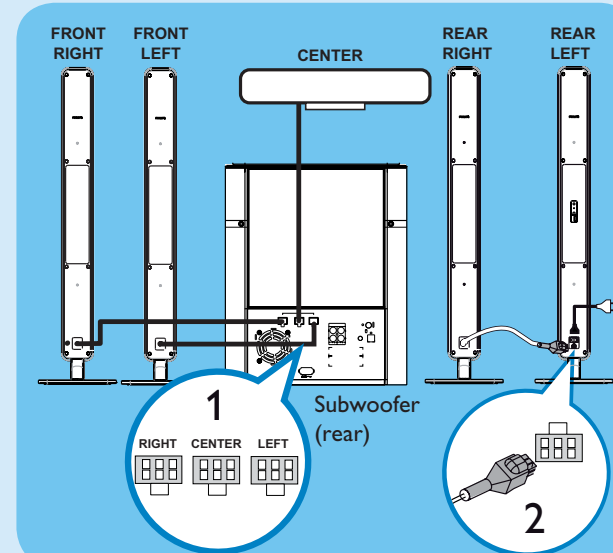
Note HDMI connection does not support audio output from your TV to this unit, a separate audio connection is required.

If your TV supports Scart

- 1 Connect a scart cable from the SCART OUT socket on the junction box to the SCART IN socket on your TV.

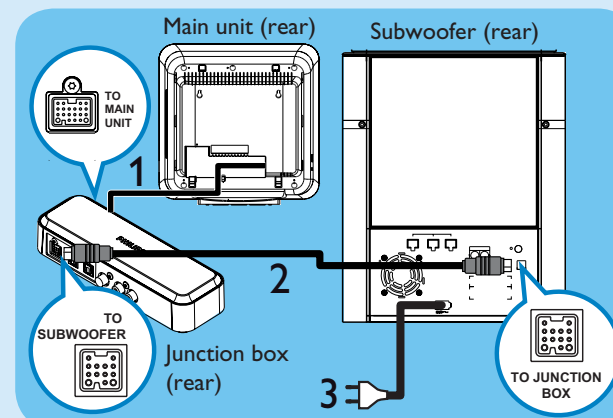
Note Refer to the accompanying user manual for other possible video connections.

C Connect speakers



- 1 Connect the FRONT LEFT, FRONT RIGHT and CENTER speakers to the matching sockets on the subwoofer.
- 2 Connect the REAR RIGHT speaker cable to the REAR LEFT speaker socket, then connect the power cable to the AC power outlet.

D Connect main unit, junction box and subwoofer



- 1 Unwind the DC cable from the main unit and connect it to the TO MAIN UNIT on the junction box.
- 2 Connect interconnect cable between TO SUBWOOFER socket on the junction box and TO JUNCTION BOX socket on the subwoofer.
- 3 Connect the power cable from subwoofer to the AC power outlet.

2 Set up

A Find the viewing channel

- 1 Press to turn on this DVD Home Theatre unit.
- 2 Turn on the TV. Use the TV's remote control to select the correct viewing channel.

Note To search for the correct viewing channel, press the Channel Down button on the TV's remote control repeatedly (or AV, SELECT, button) until you see the Video In channel.

B Start Ambisound setup

When you turn on this DVD Home Theatre unit for the first time, follow the instructions on the TV to complete the setup.



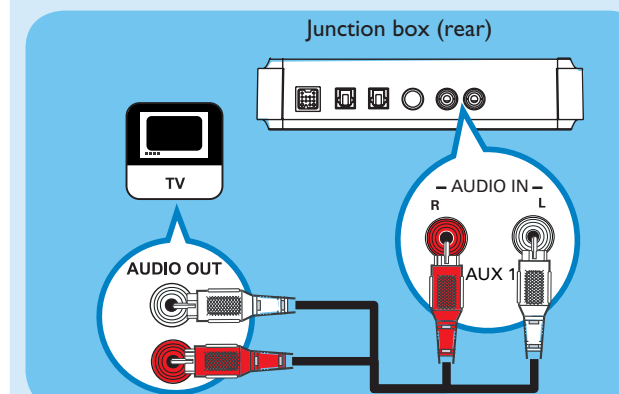
- 1 Select a language for on-screen display, then press .
- 2 [Welcome] message is displayed, press to continue.
- 3 [Room Acoustics] message is displayed, select the type of walls that surround your room, then press to select.
- 4 [Rear Speaker Placement] message is displayed, select the placement of the rear speakers in your room, then press to select.
- 5 When [Complete] screen is displayed, press to exit.

Note Refer to the accompanying user manual for other setup options.

Optional connection

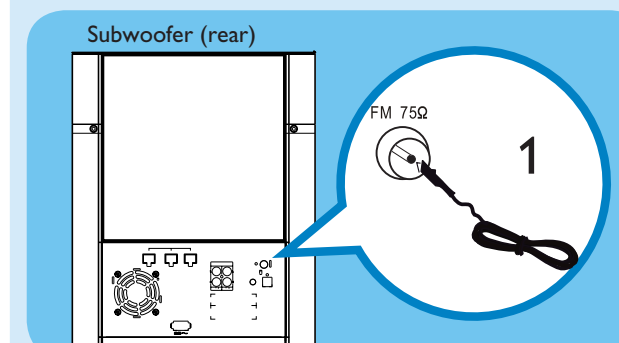
A Connect audio output from TV (for EasyLink control)

To hear the TV audio through this DVD Home Theatre unit, connect an audio cable (not supplied) from the AUDIO IN-AUX1 sockets to the AUDIO OUT sockets on your TV.



Note To listen to the audio output from this connection, press **AUX/DI/MP3 LINK** repeatedly until 'AUX1 INPUT' is displayed on the display panel.

B Connect radio antenna



- 1 Connect the FM antenna to the inner pin of the FM 75 Ω socket (for some models, this cable has been connected). Extend the antenna for optimum reception.