

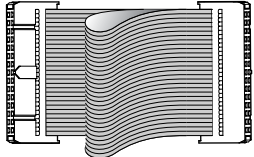
# Quick Start Guide



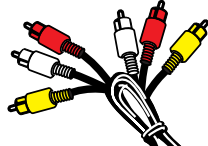
- Step A *Connect*
- Step B *Setup*
- Step C *Enjoy*

## What's in the Box?

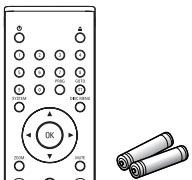
You should find these items upon opening the box.



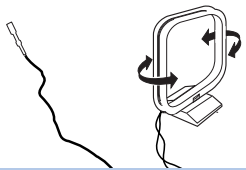
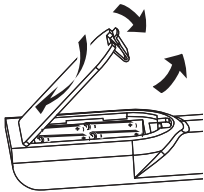
Control Cable




Composite video and audio cables (yellow, white, red)



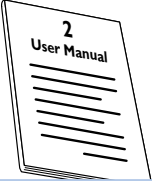
Remote control with two AAA batteries



FM and MW antennas



Quick start guide



User manual

## Step A *Connect*

### Tips

- See the User Manual for other TV connection options.
- For connecting to a Progressive Scan TV, refer to the user manual for proper connections and detailed setup.

1

Connect the speaker cables.

2

Connect the MW and FM antennas.

3

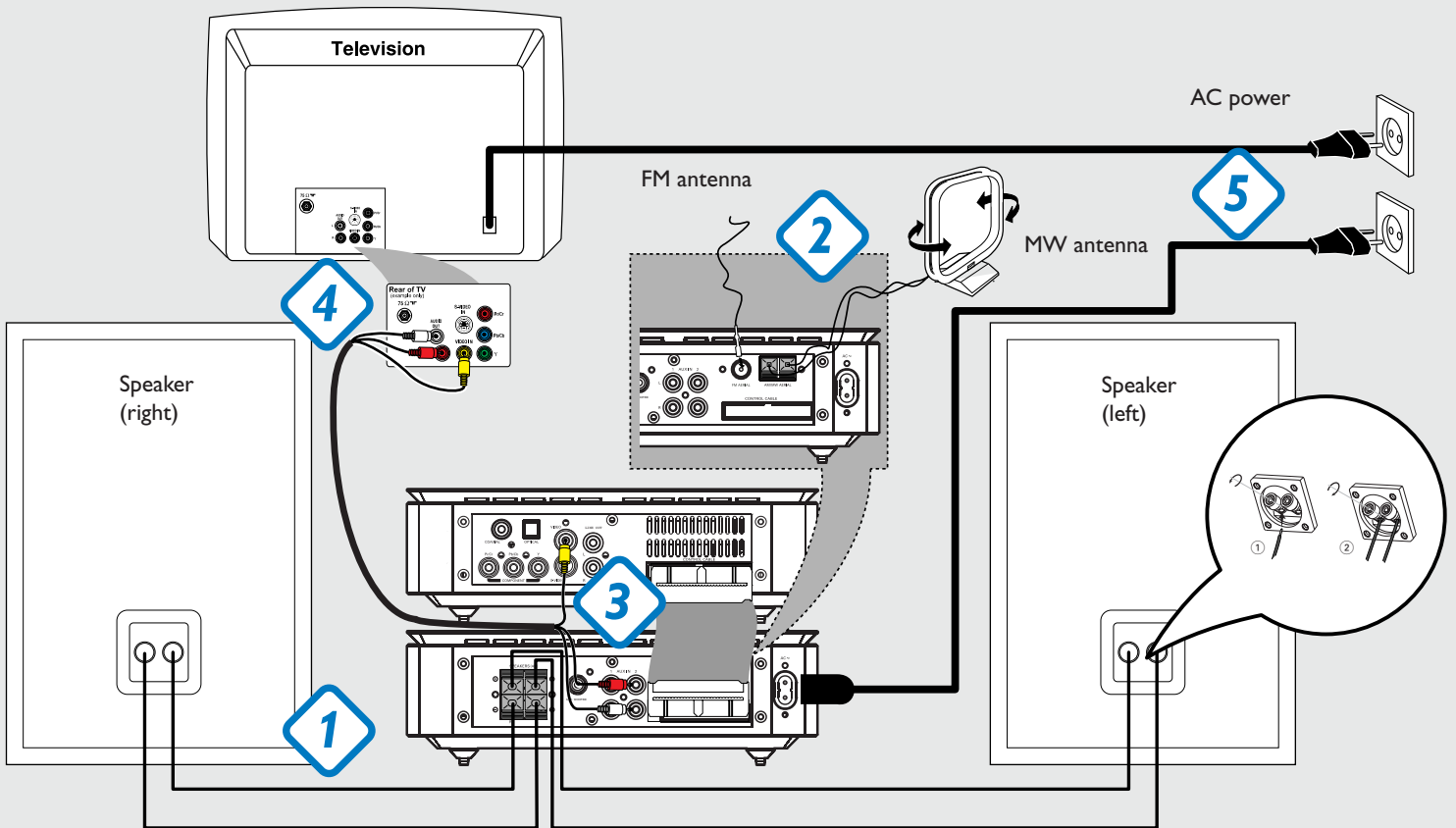
Connect the control cable.

4

Connect the composite video and audio cables to a TV.

5

Connect the power cords of the system and TV.



## Step B *Setup*

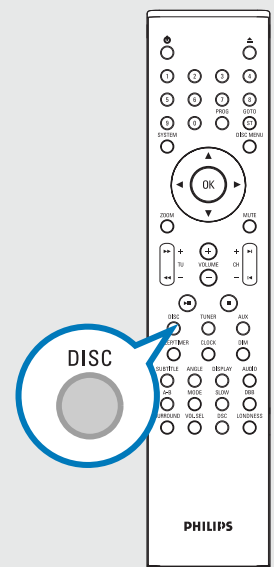
### Setting up the TV

1

Press **SOURCE** (**DISC** on the remote) to select disc source.

2

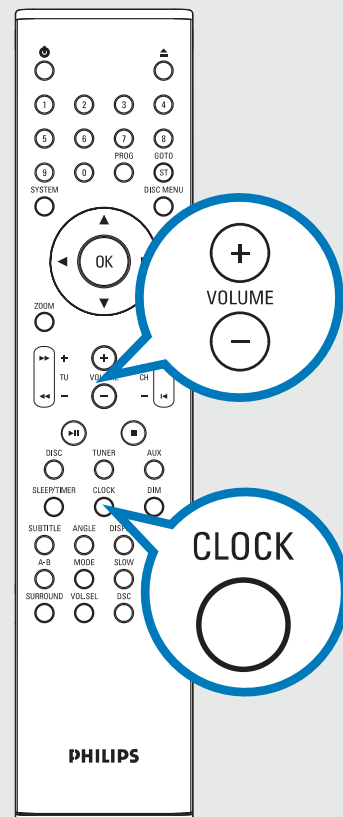
Turn on the TV and set it to the correct Video In channel.



## Step B Setup

### Setting the clock

- 1 In standby mode, press and hold **CLOCK** on the remote.
- 2 When the hour digits flash, turn **VOLUME-/+** on the system or press **VOLUME+/-** on the remote to set the hours.
- 3 Press **CLOCK** again and the minute digits flash. Then turn **VOLUME-/+** on the system or press **VOLUME+/-** on the remote to set the minutes.
- 4 Press **CLOCK** again to confirm the time setting.

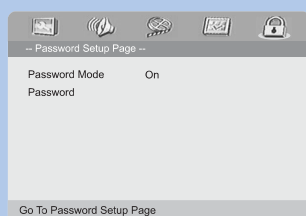
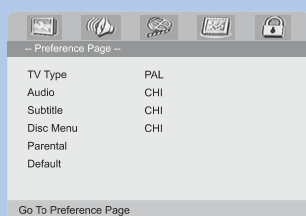
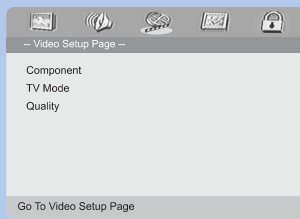
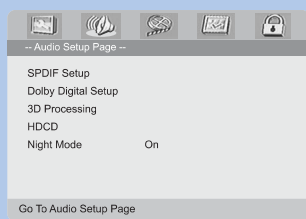
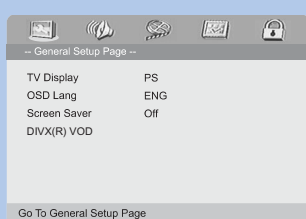


### Setting DVD menu options

#### IMPORTANT!

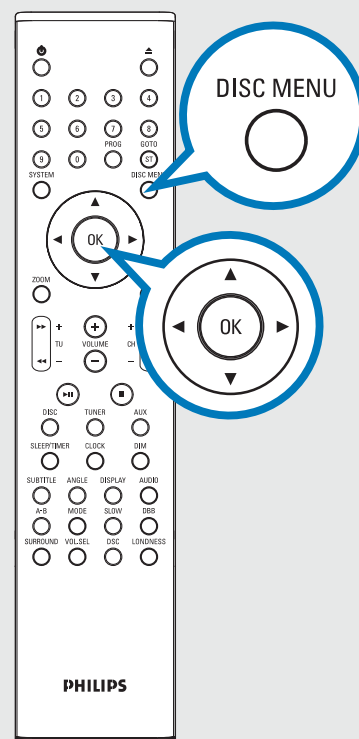
If the progressive scan feature is activated but the connected TV does not support progressive signals or the cables are not connected accordingly, see the user manual for proper progressive scan setup or deactivate the progressive scan feature as below:

- 1) Turn off your TV progressive scan mode or turn on to interlaced mode.
- 2) Press **SYSTEM** on the remote to exit the system menu and then **DISC** to exit progressive scan.



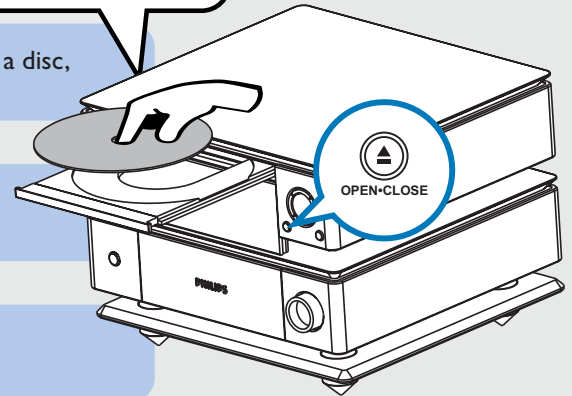
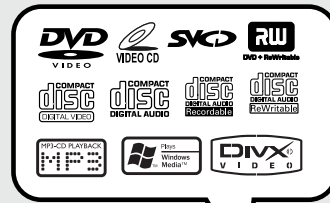
#### Tip

See chapters "Preparations" and "DVD Menu Options" in the User Manual for detailed descriptions.



## Playing a disc

- 1 Press **OPEN •CLOSE ▲** (▲ on the remote) to open the disc tray and load in a disc, then press the same button again to close the disc tray.
- 2 Load in a disc with the label side facing up.
- 3 Playback will start automatically. If not press **▶ II**.
- 4 To stop playback, press **PRESET-■** (■ on the remote).



## Programming and tuning to radio stations

- 1 Press **SOURCE (TUNER)** on the remote to select tuner source.
- 2 Press **PROG** on the remote for more than two seconds to program all available stations in order of waveband.
- 3 Press **PRESET+/- (CH +/- (◀ / ▶))** on the remote until the desired preset station is displayed.

### Tip

Detailed playback features and additional functions are described in the accompany owner's manual.

### Notes for remote control:

- First, select the source you wish to control by pressing one of the source select keys on the remote control (DISC or TUNER, for example).
- Then select the desired function (▶II, ◀, ▶I for example).

