

Always there to help you

Register your product and get support at
www.philips.com/welcome

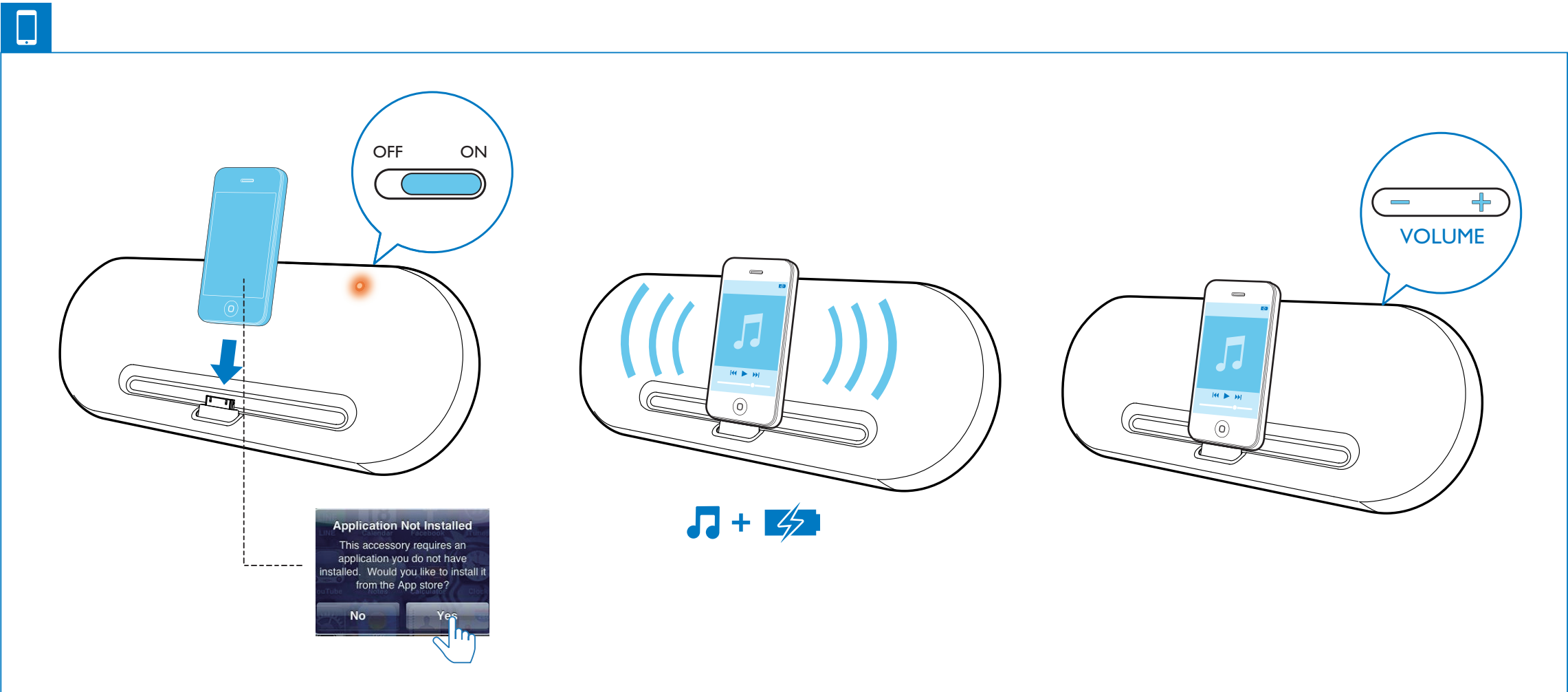
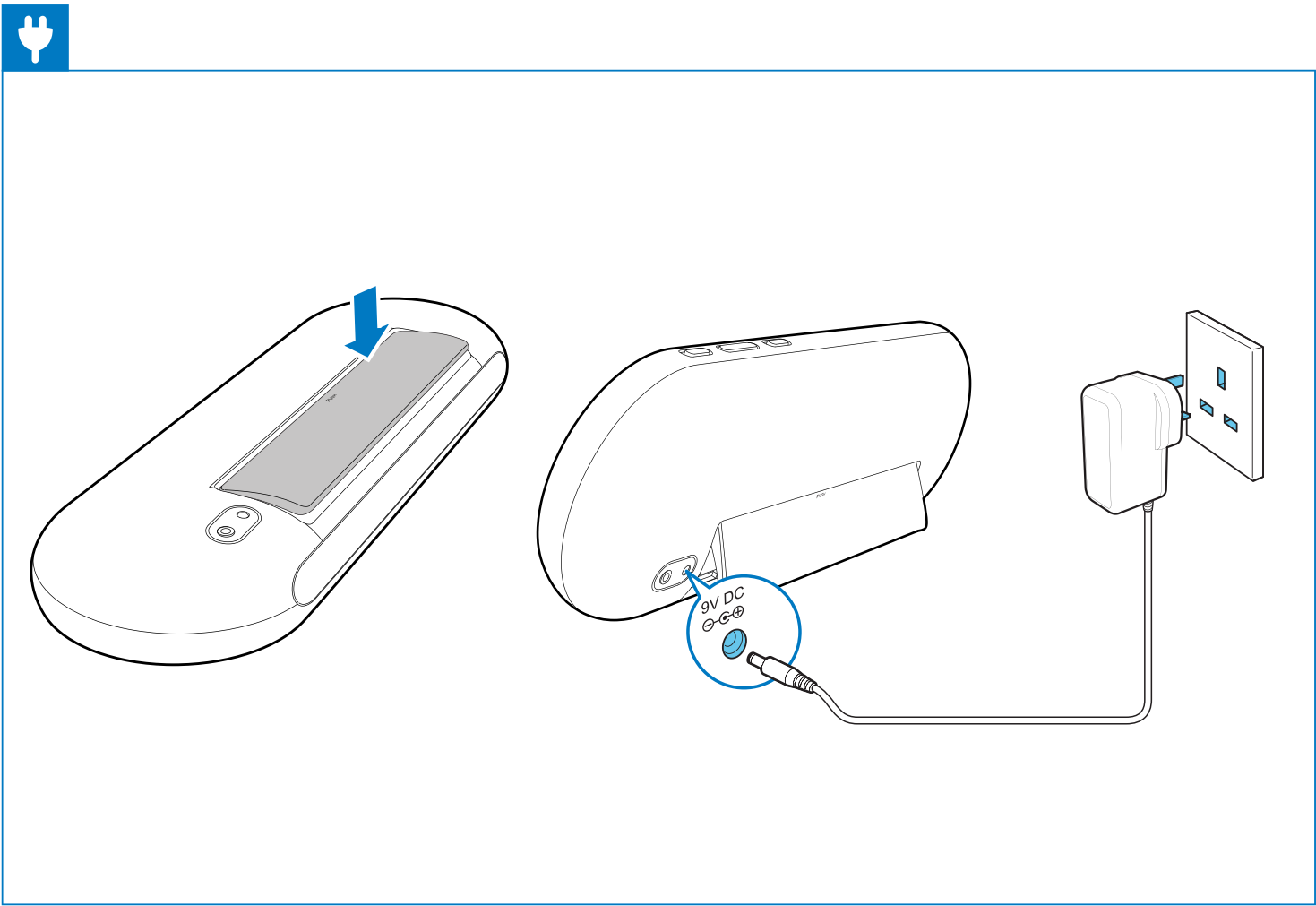
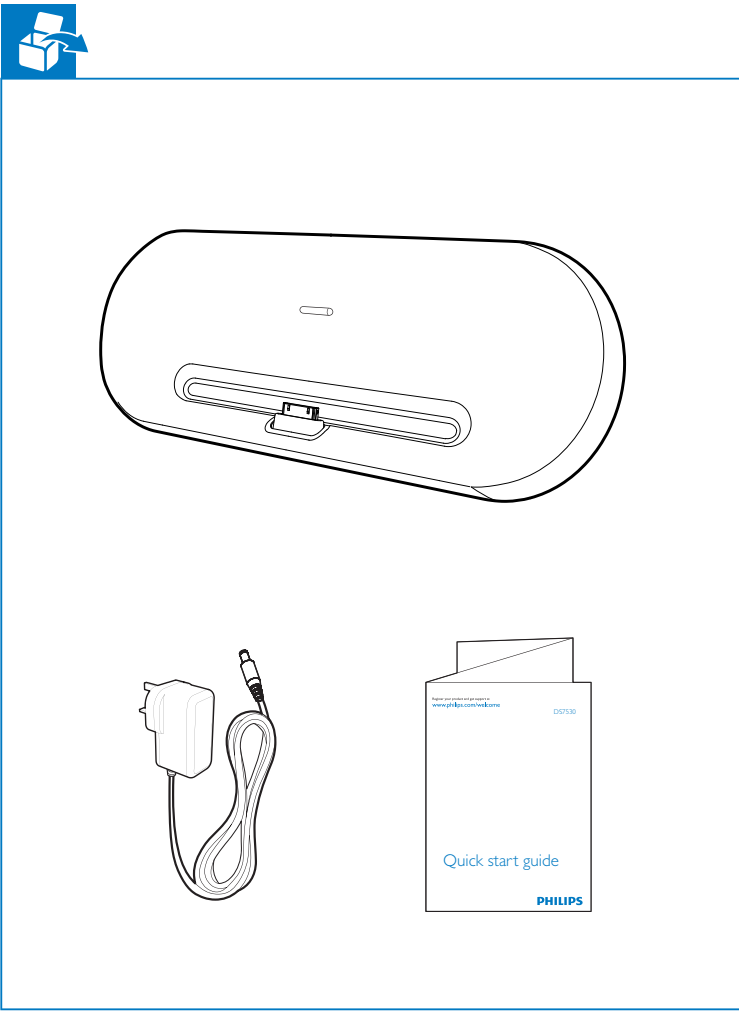
Question?
Contact
Philips



Quick start guide

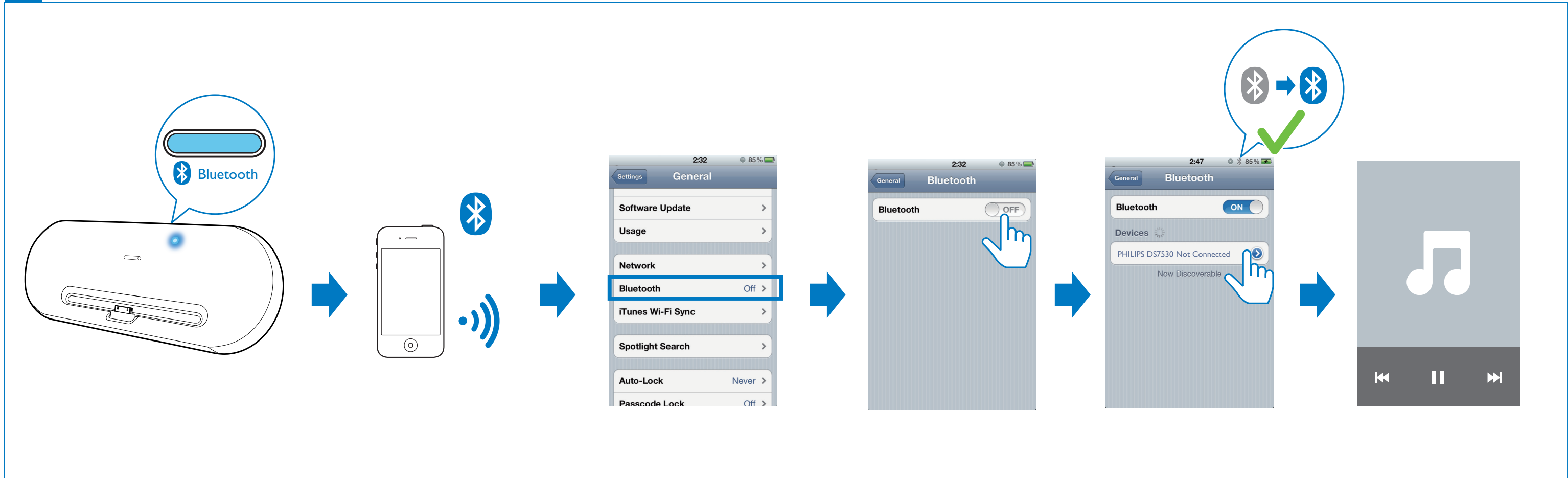
PHILIPS

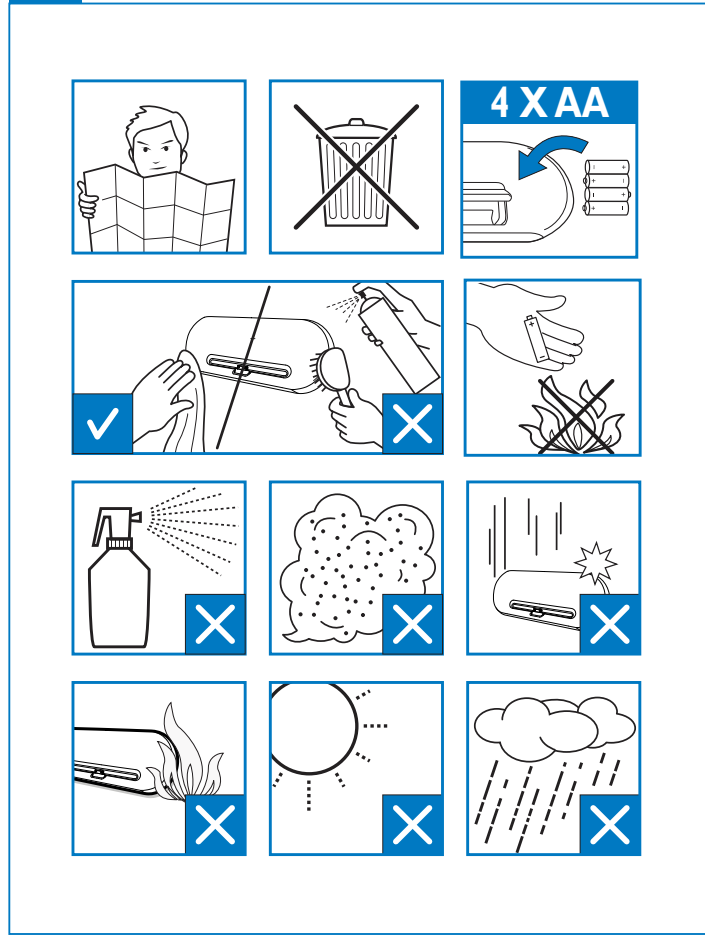
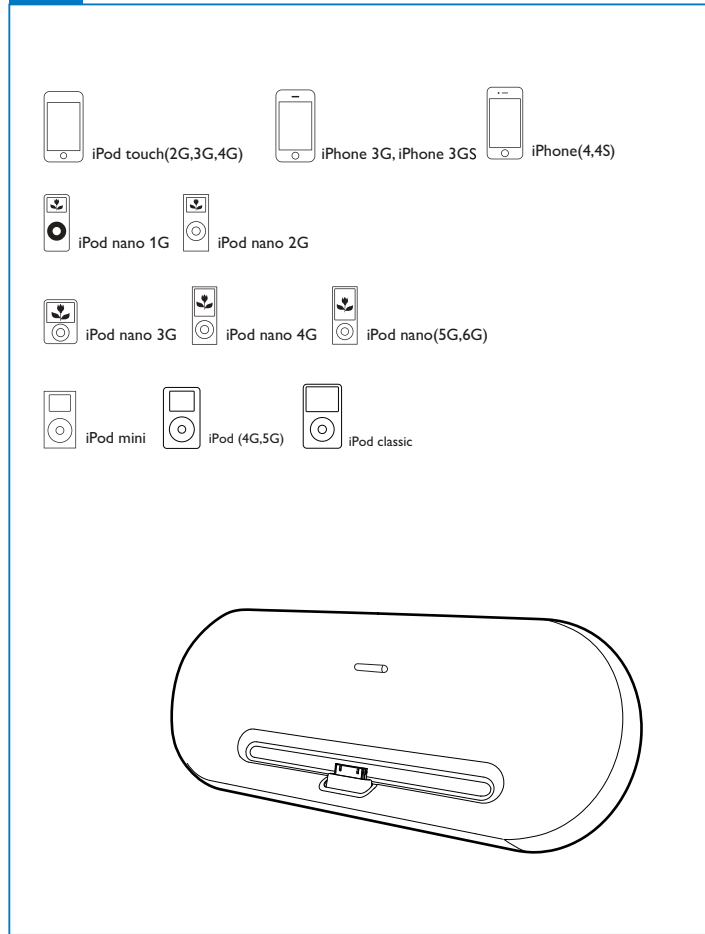
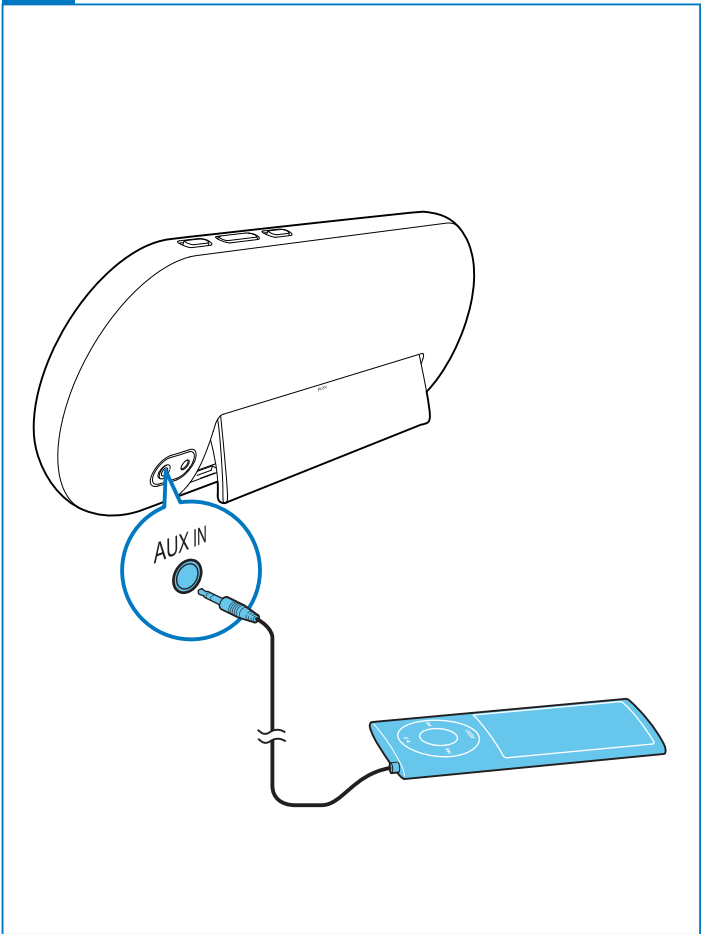
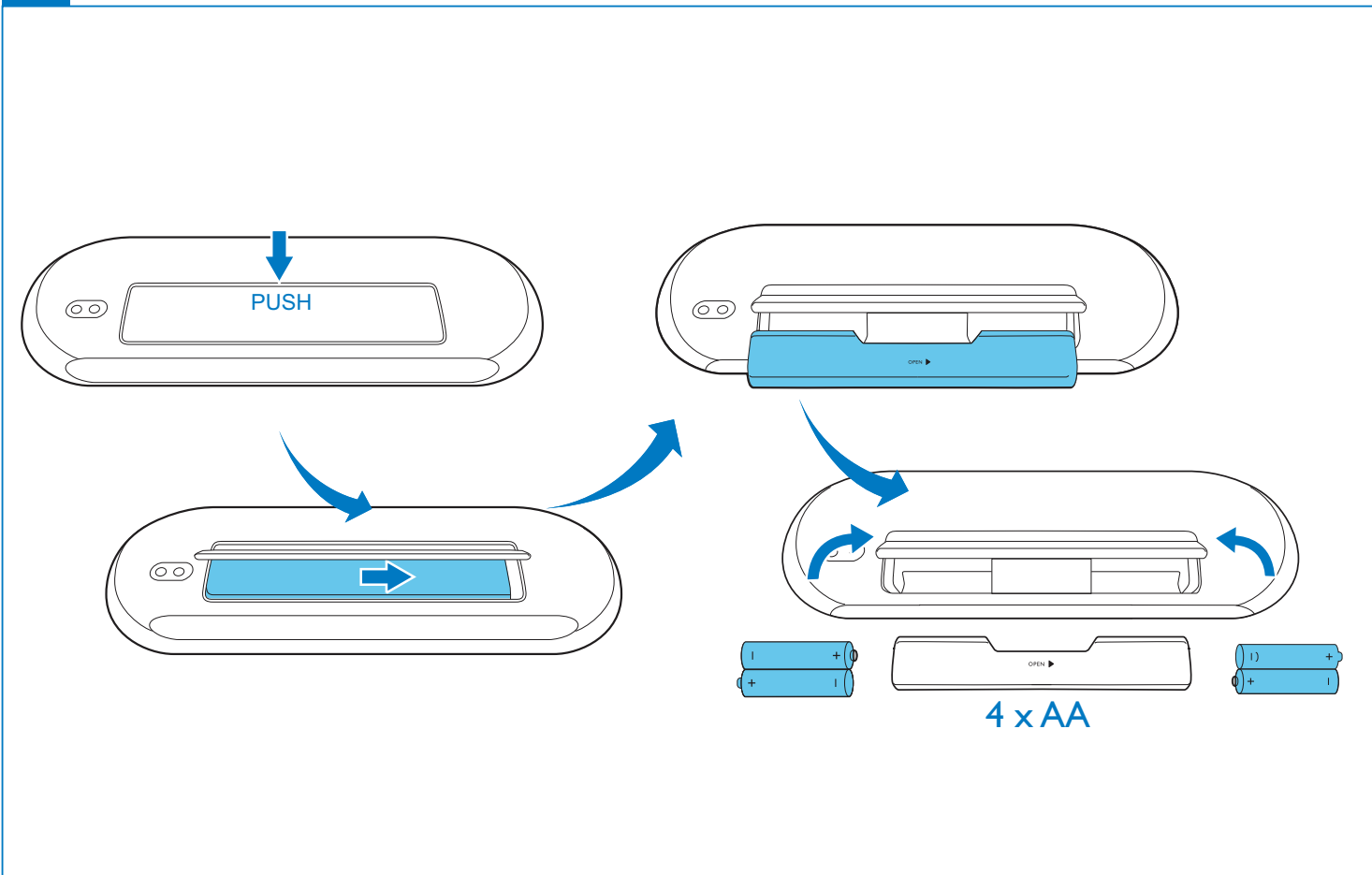
DS7530



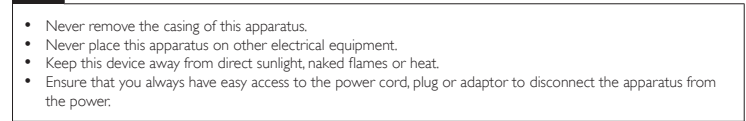
All registered and unregistered trademarks are property of their respective owners.
© 2013 Koninklijke Philips Electronics N.V.
All rights reserved.

DS7530_05_QSG_V3.0

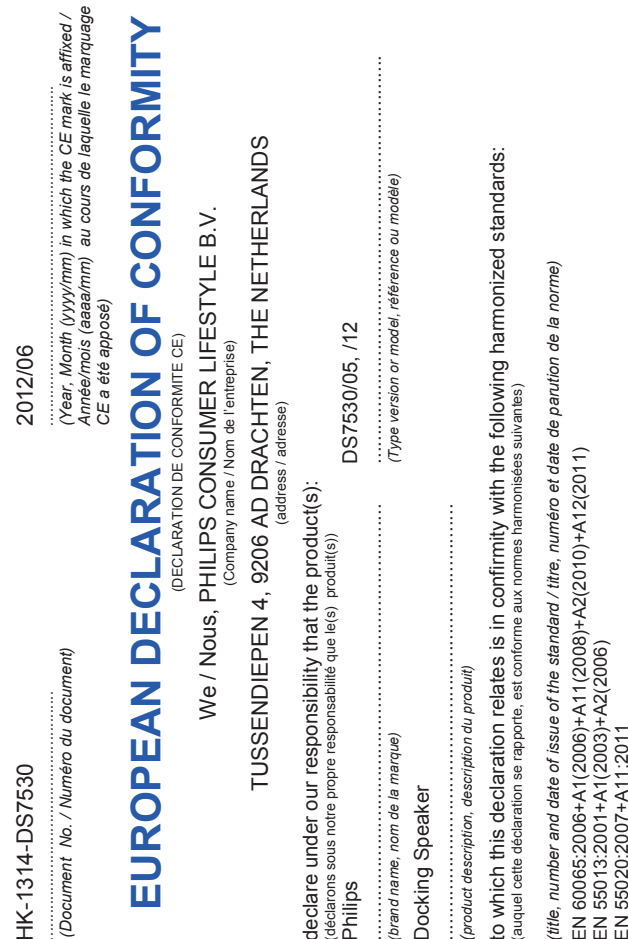
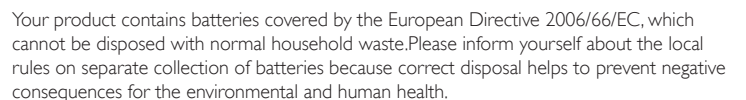
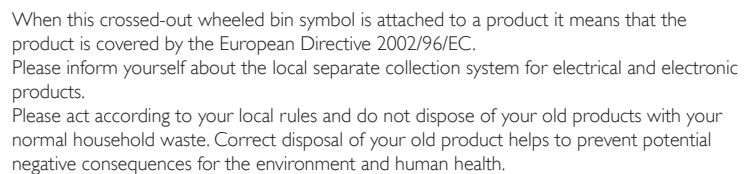
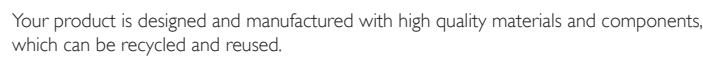
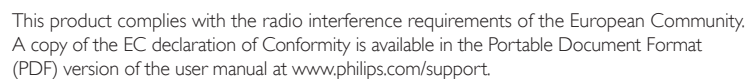
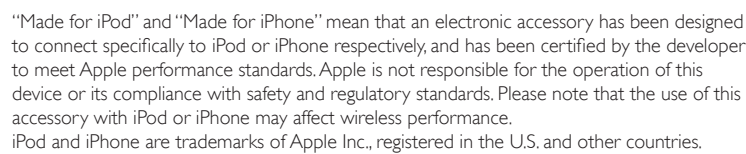




- Follow all instructions.
- Do not block any ventilation openings. Install in accordance with the manufacturer's instructions.
- Do not install near any heat sources such as radiators, heat registers, stoves, or other apparatus (including amplifiers) that produce heat.
- Protect the power cord from being walked on or pinched, particularly at plugs, convenience receptacles, and the point where they exit from the apparatus.
- Only use attachments/accessories specified by the manufacturer.
- Use only power supplies listed in the user manual.
- Unplug this apparatus during lightning storms or when unused for long periods of time.
- Refer all servicing to qualified service personnel. Servicing is required when the apparatus has been damaged in any way, such as power-supply cord or plug is damaged, liquid has been spilled or objects have fallen into the apparatus, the apparatus has been exposed to rain or moisture, does not operate normally, or has been dropped.
- Battery usage CAUTION – To prevent battery leakage which may result in bodily injury, property damage, or damage to the unit:
 - Install all batteries correctly, + and - as marked on the unit.
 - Do not mix batteries (old and new or carbon and alkaline, etc.).
 - Remove batteries when the unit is not used for a long time.
- Batteries (battery pack or batteries installed) shall not be exposed to excessive heat such as sunshine, fire or the like.
- Apparatus shall not be exposed to dripping or splashing.
- Do not place any sources of danger on the apparatus (e.g. liquid filled objects, lighted candles).
- Where the plug of the Direct Plug-In Adapter is used as the disconnect device, the disconnect device shall remain readily operable.



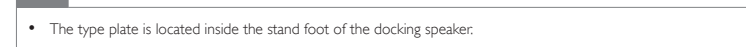
Any changes or modifications made to this device that are not expressly approved by Philips Consumer Lifestyle may void the user's authority to operate the equipment.



Environmental information

All unnecessary packaging has been omitted. We have tried to make the packaging easy to separate into three materials: cardboard (box), polystyrene foam (buffer) and polyethylene (bags, protective foam sheet.)

Your system consists of materials which can be recycled and reused if disassembled by a specialized company. Please observe the local regulations regarding the disposal of packaging materials, exhausted batteries and old equipment.



Specifications

Amplifier	
Total Output Power	2 x 5 W RMS
Signal to Noise Ratio	>60 dBA
MP3 Link	0.6 V RMS 22 kohm

Bluetooth

Standard	Bluetooth Standard Version 2.1+EDR
Output power	4 dBm (Class 2)
Frequency band	2.402 ~ 2.480 GHzISM Band
Range	10 m (free space)

General information

Power supply -AC Power	Model: S018KB0900200 (Philips); Input: 100-240 V ~ 50/60Hz, 500mA; Output: 9.0V === 2000 mA
-Battery power	4 x AA batteries
Operation Power Consumption	<18 W
Eco Standby Power Consumption	<0.5 W
Max. load for iPod/iPhone	5 V === 1 A
Dimensions - Main Unit (W x H x D)	311 x 111 x 37.6mm
Weight - Main Unit	0.28 kg