

Register your product and get support at  
[www.philips.com/welcome](http://www.philips.com/welcome)

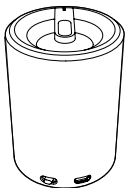
SBA3110/00

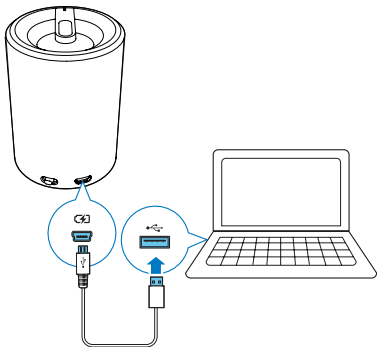


User manual

---

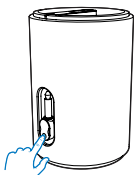
**PHILIPS**



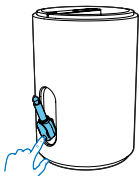




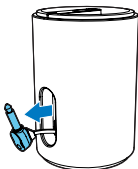
1



2

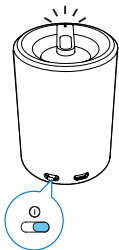


3

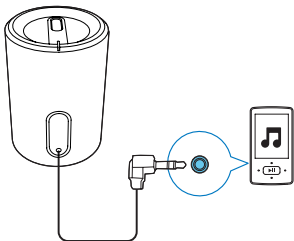


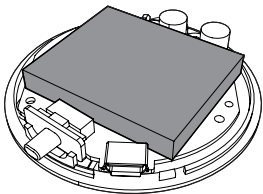


1



2





# 1 Important

---

## Safety

---

### Important Safety Instructions

- Heed all warnings.
- Follow all instructions.
- Do not use this apparatus near water.
- Do not block any ventilation openings. Install in accordance with the manufacturer's instructions.
- Do not install near any heat sources such as radiators, heat registers, stoves, or other devices (including amplifiers) that produce heat.
- Only use attachments/accessories specified by the manufacturer.
- Refer all servicing to qualified service personnel. Servicing is required when the device has been damaged in any way, such as power-supply cord or plug is damaged, liquid has been spilled or objects have fallen into the device, the device has been exposed to rain or moisture, does not operate normally, or has been dropped.
- Devices shall not be exposed to dripping or splashing.
- Do not place any sources of danger on the device (e.g. liquid filled objects, lighted candles).



#### Warning

- Never remove the casing of this apparatus.
- Never place this apparatus on other electrical equipment.

# Notice

Any changes or modifications made to this device that are not expressly approved by Philips Consumer Lifestyle may void the user's authority to operate the equipment.

This product complies with the radio interference requirements of the European Community.



## Disposal of your old product

When this crossed-out wheeled bin symbol is attached to a product it means that the product is covered by the European Directive 2002/96/EC.



Please inform yourself about the local separate collection system for electrical and electronic products.

Please act according to your local rules and do not dispose of your old products with your normal household waste. Correct disposal of your old product helps to prevent potential negative consequences for the environment and human health.

Your product contains batteries covered by the European Directive 2006/66/EC, which cannot be disposed with normal household waste. Please inform yourself about the local rules on separate collection of batteries because correct disposal helps to prevent negative consequences for the environmental and human health.



Always bring your product to a professional to remove the built-in battery.





## 2 Get started

Always follow the instructions in this chapter in sequence.

If you contact Philips, you will be asked for the model and serial number of this apparatus. The model number and serial number are on the bottom of the apparatus. Write the numbers here:

Model No. \_\_\_\_\_

Serial No. \_\_\_\_\_

---

### Power supply

The speaker can operate on built-in rechargeable battery.

#### **To recharge the built-in battery:**

Connect your speaker with PC through supplied USB cable.

↳ The power indicator turns on.

- The power indicator turns off when it's fully charged.
- 

### Play

- 1 Pull the audio input plug out of the speaker.
- 2 Slide the switch to turn the speaker on.  
↳ The LED lights up.
- 3 Connect the speaker to your device with the audio input plug.
- 4 Adjust the volume and navigate your audio content on your device.
- 5 After use, disconnect your device from the speaker and slide the switch to turn the speaker off.

## 3 Product information

Rated Output Power	2W RMS
DC power input	USB 5V 500mA
Built-in Li-Polymer battery	3.7V 500mAH

## 4 Troubleshooting

To keep the warranty valid, never try to repair the system yourself. If you encounter problems when using this apparatus, check the following points before requesting service. If the problem remains unsolved, go to the Philips web site ([www.philips.com/welcome](http://www.philips.com/welcome)). When you contact Philips, ensure that the apparatus is nearby and the model number and serial number are available.

**No power:** Recharge your speaker.

**No sound:** Adjust volume on your device.

**No response from the speaker:** Restart the speaker.





All registered and unregistered trademarks are property of their respective owners.

© 2012 Koninklijke Philips Electronics N.V.

All rights reserved.

SBA3110\_00\_UM\_V1.0

