



Philips  
Mini Hi-Fi System

380W



NTRX100

# The ideal party machine

Obsessed with sound

Get the ultimate party going now. With the Philips NTRX100's dual rotatable discs, you can play and charge two smartphones and mix and match from the devices' libraries. Stream music wirelessly via Bluetooth, thanks to One-Touch NFC pairing.

#### Enjoy your music from multiple sources

- Dual Bluetooth allow music streaming from 2 smartphones
- Dual rotatable dock for playing and charging your smartphones
- Dual USB for easy MP3 music playback
- Dual Audio-in for easy MP3 music playback

#### Enrich your sound experience

- NX bass button for instant sound boost and light effects
- Digital Sound Control for optimised music style settings
- 380W RMS total output power

#### Extend your party-machine music

- Simple setup with any Philips party machines
- Flexible placement around the house
- Dynamic lighting for dancing to the beat

# PHILIPS

# Highlights

## Dynamic lighting



Step in time to the dazzling beat of music. Cool lights blink to the rhythm of songs, adding fun and excitement to tunes. When you don't want the lights on, you can simply turn the feature off. Add glam and spice to dance parties, sizzling celebrations and cool events with these sensational dynamic lights.

## Simple setup

Simple setup with any Philips party machines

## Digital Sound Control



Digital Sound Control offers you a choice of pre-set Jazz, Rock, Pop and Classical controls you can use to optimise the frequency ranges for different musical styles. Each mode uses graphic equalizing technology to automatically adjust the sound balance and

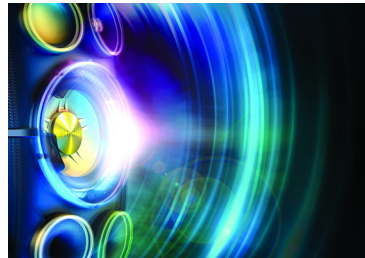
enhance the most important sound frequencies in your chosen music style. Ultimately, Digital Sound Control makes it easy for you get the most out of your music by precisely adjusting the sound balance to match the type of music you are playing.

## Dual Bluetooth



Dual Bluetooth allow music streaming from 2 smartphones

## NX bass button



Available throughout the range, NX bass temporarily boosts bass and volume to the extreme. Hit the NX bass button to instantly juice up your sound, make lighting effects go wild and feel the immense bass of the subwoofers thundering through your bones.

# Specifications

## Audio playback

- Playback media: USB flash drive, Audio-in, Bluetooth
- USB Direct playback modes: fast reverse/fast forward, play/pause, previous/next, programme play, repeat, shuffle, stop

## Loudspeakers

- Number of speaker boxes: 2
- Speaker drivers: 2" tweeter, 5.25" woofer
- Loudspeaker enhancement: 2-way
- Speaker types: bass reflex speaker system

## Sound

- Total Sound Power (RMS): 380 W
- Sound enhancement: digital sound control 4 modes, Dynamic Bass Boost 3 steps, NX Bass

## Tuner/Reception/Transmission

- Antenna: FM antenna
- Station presets: 20
- Tuner bands: FM
- Tuner enhancement: auto digital tuning, auto scan, Easy set (plug and play)

## Connectivity

- Headphones: 3.5 mm
- Microphone: dual microphone sockets
- USB: USB host
- MP3 Link: 3.5 mm stereo line in

## Convenience

- Karaoke: MIC volume, echo control
- Display type: LCD display, VFD display

## Accessories

- Remote control: 13-key
- User Manual: English
- Cables/Connection: power cord
- Others: Quick start guide, batteries for remote control, FM antenna
- Warranty: Worldwide Guarantee booklet

## Dimensions

- Packaging height: 442 mm
- Packaging width: 780 mm
- Packaging depth: 430 mm
- Product dimensions (WxDxH): 704 x 364 x 385 mm

## Power

- Power supply: 100 - 240 V AC, 50/60 Hz



Issue date 2015-12-01

Version: 1.1.7

12 NC: 8670 001 10055  
EAN: 87 12581 70461 2

© 2015 Koninklijke Philips N.V.  
All Rights reserved.

Specifications are subject to change without notice.  
Trademarks are the property of Koninklijke Philips N.V.  
or their respective owners.

[www.philips.com](http://www.philips.com)

\* Avoid extensive use of the set at a volume higher than 85 decibels because this may damage your hearing.