

Micro Hi-Fi System

MC108

user manual

manual del usuario



PHILIPS

México



Es necesario que lea cuidadosamente su instructivo de manejo.

	PRECAUCIÓN - ADVERTENCIA	
	No abrir, riesgo de choque eléctrico	
ATENCIÓN		
Verifique que el voltaje de alimentación sea el requerido para su aparato		
Para evitar el riesgo de choque eléctrico, no quite la tapa. En caso de requerir servicio, dirijase al personal calificado.		

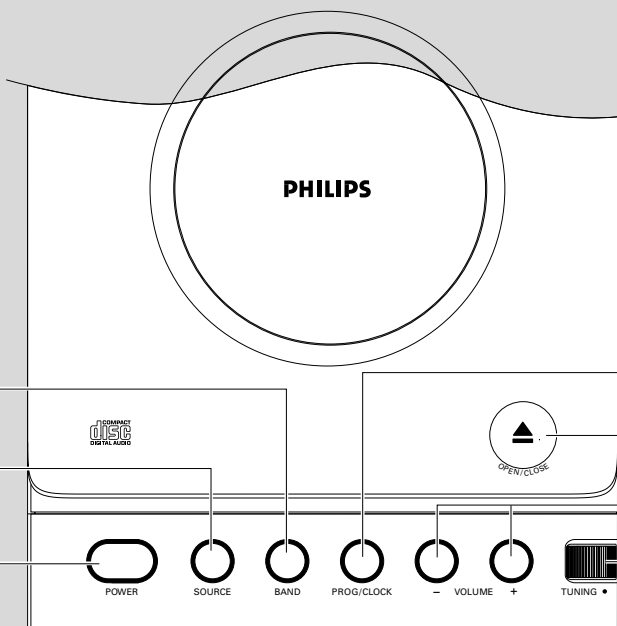
Descripción: **Minisistema de Audio**
Modelo : **MC108/85**
Alimentación: **110-127 / 220-240V~; 50-60 Hz**
Consumo: **18 W**
Importador: **Philips Mexicana, S.A. de C.V.**
Domicilio: **Av. La Palma No.6**
Col. San Fernando La Herradura
Huixquilucan
Localidad y Tel: **Edo. de México C.P. 52784**
Tel.52 69 90 00
Exportador: **Philips Electronics HK, Ltd.**
País de Origen: **China**
Nº de Serie: _____

**LEA CUIDADOSAMENTE ESTE INSTRUCTIVO
ANTES DE USAR SU APARATO.**

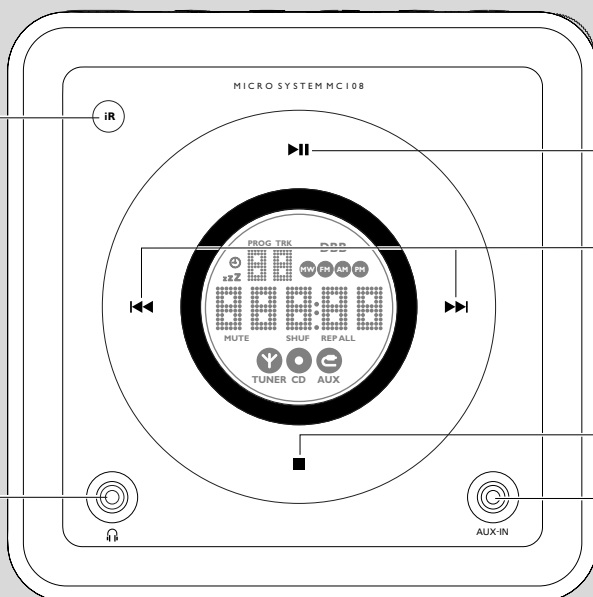
AVISO IMPORTANTE

Philips Mexicana, S.A. de C.V. no se hace responsable por daños o desperfectos causados por:

- *Maltrato, descuido o mal uso, presencia de insectos o roedores (cucarachas, ratones etc.).*
- *Cuando el aparato no haya sido operado de acuerdo con el instructivo del uso, fuera de los valores nominales y tolerancias de las tensiones (voltaje), frecuencia (ciclaje) de alimentación eléctrica y las características que deben reunir las instalaciones auxiliares.*
- *Por fenómenos naturales tales como: temblores, inundaciones, incendios, descargas eléctricas, rayos etc. o delitos causados por terceros (choques asaltos, riñas, etc.).*



- 1
- 2
- 3
- 4
- 5
- 6
- 7



- 8
- 9
- 10
- 11
- 12
- 13

CAUTION

Use of controls or adjustments or performance of procedures other than herein may result in hazardous radiation exposure or other unsafe operation.

English ----- 6

Español ----- 18

Contents

General Information

Environmental information	7
Supplied accessories	7
Safety information	7

Preparation

Rear connections	8–9
Before using the remote control	9
Replacing battery (lithium CR2032) into the remote control	9

Controls

Controls on the system and remote control	10
--	----

Basic Functions

Switching the system on	11
Power-saving automatic standby	11
Adjusting volume and sound	11

CD Operation

Playing a disc	12
Selecting a different track	12
Finding a passage within a track	12
Different play modes: Shuffle and Repeat	13
Programming track numbers	13
Erasing the programme	13

Radio Reception

Tuning to radio stations	14
--------------------------------	----

Maintenance

14

Clock/Timer

Setting the clock	15
Setting the timer	15
Activating and deactivating TIMER	15
Activating and deactivating SLEEP	16

Specifications

16

Troubleshooting

17

IMPORTANT!

PLEASE NOTE THAT THE VOLTAGE SELECTOR LOCATED AT THE REAR OF THIS SYSTEM IS PRESET AT 220V FROM THE FACTORY. FOR COUNTRIES THAT OPERATE AT 110V-127V, PLEASE ADJUST TO 110V-127V BEFORE YOU SWITCH ON THE SYSTEM.

Supplied accessories

- 2 speaker boxes
- remote control with battery
- AM loop antenna

Environmental Information

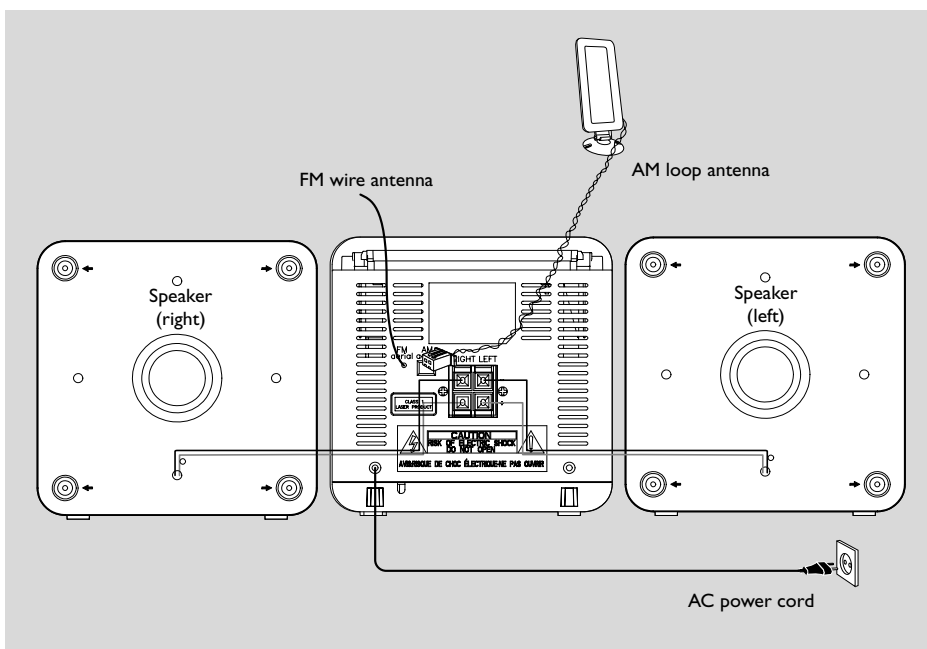
All unnecessary packaging has been omitted. We have tried to make the packaging easy to separate into three materials: cardboard (box), polystyrene foam (buffer) and polyethylene (bags, protective foam sheet).

Your system consists of materials which can be recycled and reused if disassembled by a specialized company. Please observe the local regulations regarding the disposal of packaging materials, exhausted batteries and old equipment.

Safety Information

- Before operating the system, check that the operating voltage indicated on the typeplate (or the voltage indication beside the voltage selector) of your system is identical with the voltage of your local power supply. If not, please consult your dealer.
- Place the system on a flat, hard and stable surface.
- Place the system in a location with adequate ventilation to prevent internal heat build-up in your system. Allow at least 10 cm (4 inches) clearance from the rear and the top of the unit and 5 cm (2 inches) from each side.
- The ventilation should not be impeded by covering the ventilation openings with items, such as newspapers, table-cloths, curtains, etc.
- Do not expose the system, batteries or discs to excessive moisture, rain, sand or heat sources caused by heating equipment or direct sunlight.
- No naked flame sources, such as lighted candles, should be placed on the apparatus.
- No objects filled with liquids, such as vases, shall be placed on the apparatus.
- If the system is brought directly from a cold to a warm location, or is placed in a very damp room, moisture may condense on the lens of the disc unit inside the system. Should this occur, the CD player would not operate normally. Leave the power on for about one hour with no disc in the system until normal playback is possible.
- The mechanical parts of the set contain self-lubricating bearings and must not be oiled or lubricated.
- **When the system is switched to Standby mode, it is still consuming some power. To disconnect the system from the power supply completely, remove the AC power plug from the wall socket.**

Preparations



Rear connections

The type plate is located at the rear of the system.

A Power

- Before connecting the AC power cord to the wall outlet, ensure that all other connections have been made.
- If your system is equipped with a Voltage Selector, set the VOLTAGE SELECTOR to the local power line voltage.

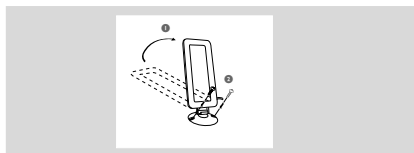
WARNING!

- For optimal performance, use only the original power cable.
- Never make or change any connections with the power switched on.

B Antennas Connection

AM (MW) antenna

- 1 Unfold the loop antenna and if necessary, use screws (not supplied) to fix it to a flat, hard and stable place:

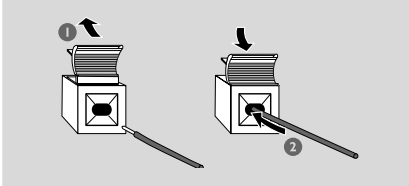


- 2 Fit the plug of the loop antenna to AM ANTENNA as shown above.
 - 3 Adjust the antenna for optimal reception
- Position the antenna as far as possible from a TV, VCR or other radiation source.

C Speakers Connection

Front Speakers

Connect the speaker wires to the SPEAKERS terminals, right speaker to "RIGHT" and left speaker to "LEFT", coloured (marked) wire to "+" and black (unmarked) wire to "-".



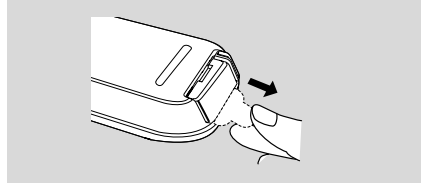
- Fully insert the stripped portion of the speaker wire into the terminal as shown.

Notes:

- For optimal sound performance, use the supplied speakers.
- Do not connect more than one speaker to any one pair of + / - speaker terminals.
- Do not connect speakers with an impedance lower than the speakers supplied. Please refer to the SPECIFICATIONS section of this manual.

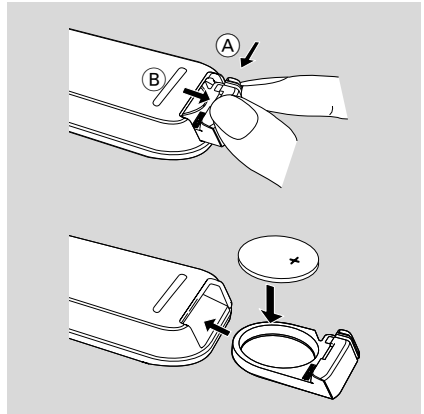
Before using the remote control

- 1 Pull out the plastic protective sheet.
- 2 Select the source you wish to control by pressing one of the source select keys on the remote control (for example CD, TUNER).
- 3 Then select the desired function (for example ▶, ◀, ▶▶).



Replacing battery (lithium CR2032) into the remote control

- 1 Pull out the knob (A) slightly to the left.
- 2 Pull out the battery compartment (B).
- 3 Replace a new battery and fully insert the battery compartment back to the original position.



CAUTION!

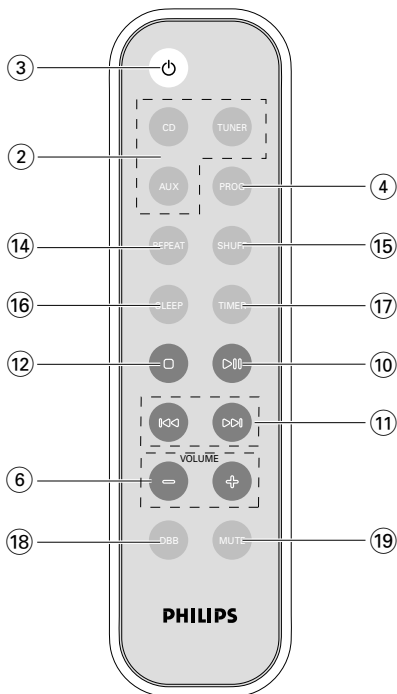
Batteries contain chemical substances, so they should be disposed off properly.

Controls (illustrations on page 3)

Controls on the system and remote control

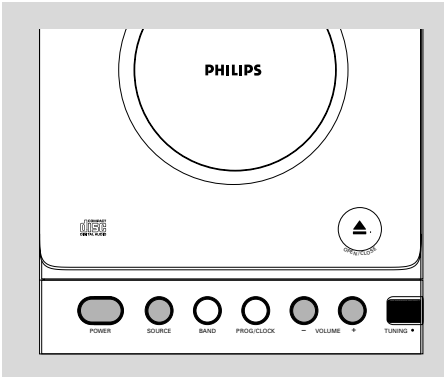
- ① **BAND**
 - for Tuner (on the set only) selects waveband.
- ② **SOURCE (CD/ TUNER/ AUX)**
 - switches on the system.
 - selects the respective sound source for CD/ FM/ MW/ AUX.
- ③ **POWER / ⏻**
 - switches the system to standby/on.
- ④ **PROG/CLOCK**
 - for CD programs tracks and reviews the program.
 - for clock sets the clock function.
- ⑤ **OPEN•CLOSE**
 - opens/closes the CD door.
- ⑥ **VOLUME – / +**
 - adjusts volume level.
- ⑦ **TUNING ●**
 - tunes to radio stations.
- ⑧ **IR SENSOR**
 - infrared sensor for remote control.
- ⑨ **🎧**
 - connect headphones.
- ⑩ **▶ ||**
 - for CD starts or pauses CD playback.
- ⑪ **⏮ / ⏭**
 - skips to the beginning of a current track/ previous/ next track.
 - fast searches back and forward within a track/ CD.
- ⑫ **STOP ■**
 - stops CD playback or erase a CD program.
- ⑬ **AUX IN**
 - connects to external audio source.
- ⑭ **REPEAT**
 - repeats a track/CD program/ entire CD.
- ⑮ **SHUF (SHUFFLE)**
 - plays CD tracks in random order.
- ⑯ **SLEEP**
 - activates/deactivates or selects the sleeper time.
- ⑰ **TIMER**
 - activates/deactivates or sets the timer function.

- ⑱ **DBB**
 - (Dynamic Bass Boost) enhances the bass.
- ⑲ **MUTE**
 - switches playback sound off and on.



Notes for remote control:

- First select the source you wish to control by pressing one of the source select keys on the remote control (for example CD , TUNER).
- Then select the desired function (for example ▶ , ⏮ , ⏭).



IMPORTANT:

Before you operate the system, complete the preparation procedures.

Switching the system on

- Press **POWER** (⏻) on the remote control.
→ The system will switch to the last selected source.
- Press **SOURCE** (CD, TUNER or AUX) on the remote control).
→ The system will switch to the selected source.


To switch the system to standby mode

- Press **POWER** (⏻) on the remote control).
→ The volume level (up to maximum volume level of 20), interactive sound settings and last selected source and will be retained in the player's memory.

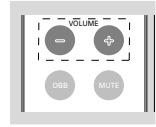
Power-saving automatic standby

The power-saving feature automatically switches to standby 15 minutes after a CD playback has ended and no control is operated.

Adjusting volume and sound

- 1 Press **VOLUME - / +** to increase or decrease volume.
→ Display shows the volume level  and a number from 0-32.

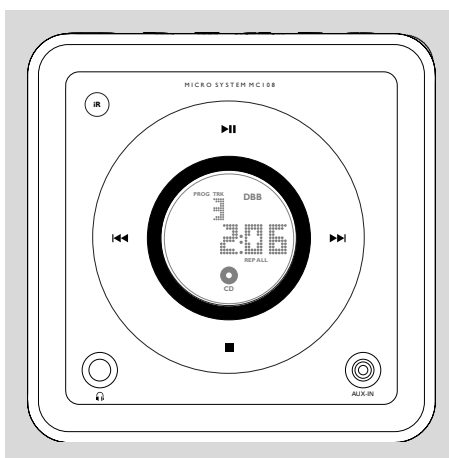
- 2 Press **DBB** (on the remote control) to switch bass enhancement on or off.
→ Display shows: **DBB** if the DBB is activated.



- 3 Press **MUTE** on the remote control to stop sound play-back instantly.
→ Playback will continue without sound and the display shows **MUTE** .

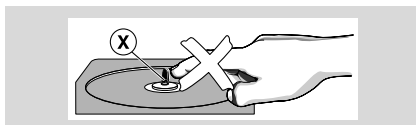
- To start sound playback you can:
 - press **MUTE** again;
 - adjust the volume controls;
 - change source.

CD Operation



IMPORTANT:

The lens of the CD player should never be touched.

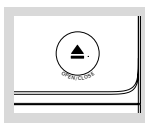


Playing a disc

This CD player plays Audio Discs including CD-Recordables and CD-Rewritables.

- CD-ROM, CD-I, CDV, VCD, DVD or computer CDs, however, are not possible.

- 1 Select **CD** source.
- 2 Press **OPEN•CLOSE** on the top of the system to open the CD compartment.
→ **OPEN** is displayed when you open the CD compartment.
- 3 Insert a disc with the printed side facing up and press down on **OPEN•CLOSE** to close the CD door.
→ **READ** is displayed as the CD player scans the contents of a disc. The total number of tracks and time are also shown.
- 4 Press **▶II** to start playback.
→ Current track number followed by elapsed playing time of the track are displayed during disc playback.



- 5 To pause playback press **▶II**. Press **▶II** again to resume play.
→ The display freezes and the current track number flashes when playback is paused.

- 6 To stop disc playback, press **■**.

Note: CD play will also stop when;

- the CD door is opened.
- the disc has reached the end.
- you select another source: **AUX, TUNER**.
- you select standby.

Selecting a different track

- Press **II** or **II** once or repeatedly until the desired track number appears in the display.
- If you have selected a track number shortly after loading a disc, or in the PAUSE position, you will need to press **▶II** to start playback.

Finding a passage within a track

- 1 Press and hold down **II** or **II**.
→ The disc is played at high speed and low volume.
- 2 When you find the passage you want, release **II** or **II**.
→ Normal playback continues.

Different play modes: SHUFFLE and REPEAT

You can select and change the various play modes before or during playback.

REPEATplays the current track continuously

REPEAT ALL ...repeats the entire disc/programme

SHUFFLEtracks of the entire disc are played in random order

- 1** To select your play mode, press **SHUFFLE** or **REPEAT** (on the remote control) before or during playback until the display shows the desired function.
- 2** Press **▶||** to start playback if in the STOP position.
→ If you have selected SHUFFLE, playback starts automatically.
- 3** To return to normal playback, press **SHUFFLE** or **REPEAT** (on the remote control) until the various SHUFFLE/ REPEAT modes are no longer displayed.
- You can also press **STOP ■** to cancel your play mode..

Programming track numbers

Programme in the STOP position to select and store your disc tracks in the desired sequence. If you like, store any track more than once. Up to 20 tracks can be stored in the memory.

- 1** Press **◀◀** or **▶▶** to select your desired track number.
- 2** Press **PROG**.
→ Display shows: the selected track number.
PROG flashes and **PR** ↓ appears briefly.
- 3** Repeat steps **1-2** to select and store all desired tracks.
→ **FULL** is displayed if you attempt to programme more than 20 tracks.
- 4** To start playback of your disc programme, press **▶||**.

Notes:

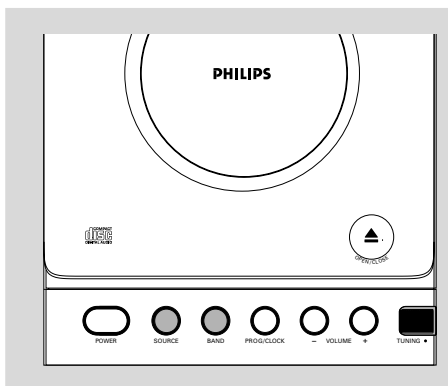
- *If you wish, you can add further tracks to your current program. Make sure you are in the STOP position, and that you have not exceeded 20 tracks.*
- *Display shows **NOSE** if there is no track selected.*

Erasing the programme

You can erase the programme by:

- pressing **■** once in the STOP mode;
- pressing **■** twice during playback;
- opening the CD compartment;
- Select another sound source
→ **PROG** disappears from the display.

Radio Reception




- 3 Turn **TUNING** ● to tune to a station.
→ Display shows: the frequency of the tuned station.

Helpful hints:

To improve radio reception:

- For **FM**, extend coil antenna at the back of the unit fully for optimum reception.

Tuning to radio stations

- 1 Select **TUNER** source.
→  is displayed.
- 2 Press **BAND (TUNER** on the remote control) once or more to select your waveband.

Maintenance

Cleaning the Cabinet

- Use a soft cloth slightly moistened with a mild detergent solution. Do not use a solution containing alcohol, spirits, ammonia or abrasives.

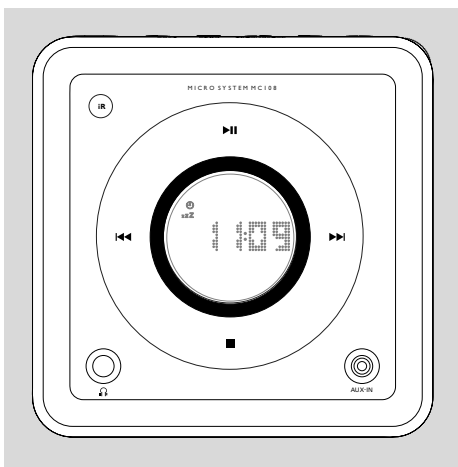
Cleaning Discs

- When a disc becomes dirty, clean it with a cleaning cloth. Wipe the disc from the centre out.
- Do not use solvents such as benzene, thinner, commercially available cleaners, or antistatic spray intended for analogue records.



Cleaning the disc lens

- After prolonged use, dirt or dust may accumulate at the disc lens. To ensure good playback quality, clean the disc lens with Philips CD Lens Cleaner or any commercially available cleaner. Follow the instructions supplied with cleaner.



Setting the clock

- 1 In Standby mode, press **PROG/CLOCK** button.
→ The clock digits for the hours flash.
- 2 Press **◀◀ / ▶▶** to set the hours.
- 3 Press **PROG/CLOCK** again.
→ The clock digits for the minutes flash.
- 4 Press **◀◀ / ▶▶** to set the minutes.
- 5 Press **PROG/CLOCK** to confirm the time.

Note:

– If the clock has not been set, **--** will be displayed.


Setting the timer

- The system can be used as an alarm clock. CD or TUNER can be set to switch on at a preset time. The clock time needs to be set first before the timer can be used.
 - If no button is pressed within 90 seconds during timer setup, the system will exit timer setting mode automatically.
- 1 In any mode, press **TIMER** (on the remote control) for more than 2 seconds.
 - 2 Press **◀◀ / ▶▶** (or **CD / TUNER** on the remote control) to select sound source.
 - 3 Press **TIMER** to confirm your desired source.
→ The clock digits for the hours flash.
 - 4 Press **◀◀ / ▶▶** to set the hours.
 - 5 Press **TIMER** again.
→ The clock digits for the minutes flash.
 - 6 Press **◀◀ / ▶▶** to set the minutes.
 - 7 Press **TIMER** to confirm the time.
→ The timer is now set and actiated.

Note:

– If source **CD** is selected and no disc is in the CD tray or the disc has an error, **TUNER** will be selected automatically.

Activating and deactivating TIMER

- In standby or during playback, press **TIMER** once.
→ Display shows  if activated, and disappears if deactivated.

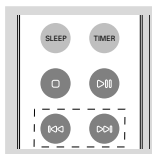
Clock/Timer

Activating and deactivating SLEEP

The sleep timer enables the system to switch off by itself after a set period of time. The clock time needs to be set first before the sleep timer can be used.

- Press **SLEEP** on the remote control repeatedly to select desired time before system shuts off.

→ Display shows **SLEEP** and series of time options for selection: 60, 45, 30, 15, 0, 60 ...



- To deactivate, press **SLEEP** on the remote control once or more until " " is shown, or press **STANDBY ON** on the system or remote control.

Specifications

AMPLIFIER

Output power 2 x 2 W RMS
..... 200 W PMPO
Signal-to-noise ratio ≥ 62 dBA (IEC)
Frequency response 60 – 16000 Hz, ± 3 dB
Impedance loudspeakers 8 Ω
Impedance headphones 32 Ω – 1000 Ω

CD PLAYER

Frequency range 20 – 20000 Hz
Signal-to-noise ratio 75 dBA

TUNER

FM wave range 87.5 – 108 MHz
MW wave range 530 – 1700 kHz
Sensitivity at 75 Ω
– mono, 26 dB signal-to-noise ratio 2.8 μ V
– stereo, 46 dB signal-to-noise ratio 61.4 μ V
Selectivity ≥ 28 dB
Total harmonic distortion $\leq 5\%$
Frequency response 63 – 12500 Hz (± 3 dB)
Signal-to-noise-ratio ≥ 50 dB

SPEAKERS

Bass reflex system
Dimensions (w x h x d) .. 150 x 150 x 200 (mm)

GENERAL INFORMATION

AC Power 110 – 127 / 220 – 240 V
..... 50/60 Hz Switchable
Dimensions (w x h x d) .. 150 x 150 x 220 (mm)
Weight (with/without speakers)
..... approx. 4.9 / 2.3 kg
Standby power consumption < 3 W

Subject to modification

WARNING

Under no circumstances should you try to repair the system yourself, as this will invalidate the warranty. Do not open the system as there is a risk of electric shock.

If a fault occurs, first check the points listed below before taking the system for repair. If you are unable to remedy a problem by following these hints, consult your dealer or service centre.

Problem	Solution
CD OPERATION	
"no cd" is displayed.	<ul style="list-style-type: none"> - Insert a disc. - Check if the disc is inserted upside down. - Wait until the moisture condensation at the lens has cleared. - Replace or clean the disc, see "Maintenance". - Use a finalised CD-RW or CD-R.
RADIO RECEPTION	
Radio reception is poor.	<ul style="list-style-type: none"> - If the signal is too weak, adjust the antenna or connect an external antenna for better reception. - Increase the distance between the Micro HiFi System and your TV or VCR.
GENERAL	
The system does not react when buttons are pressed.	<ul style="list-style-type: none"> - Remove and reconnect the AC power plug and switch on the system again.
Sound cannot be heard or is of poor quality.	<ul style="list-style-type: none"> - Adjust the volume. - Disconnect the headphones. - Check that the speakers are connected correctly. - Check if the stripped speaker wire is clamped.
The left and right sound outputs are reversed.	<ul style="list-style-type: none"> - Check the speaker connections and location.
The remote control does not function properly.	<ul style="list-style-type: none"> - Select the source (CD or TUNER, for example) before pressing the function button (▶, ◀, ▶). - Reduce the distance between the remote control and the system. - Insert the batteries with their polarities (+/- signs) aligned as indicated. - Replace the batteries. - Point the remote control directly toward IR sensor on the front of the system.
The timer is not working.	<ul style="list-style-type: none"> - Set the clock correctly. - Press TIMER to switch on the timer. - If a recording is in progress, stop the recording.
The Clock/Timer setting is erased.	<ul style="list-style-type: none"> - Power has been interrupted or the power cord has been disconnected. Reset the clock/timer.