

Always there to help you

HTL2151

Register your product and get support at
www.philips.com/welcome

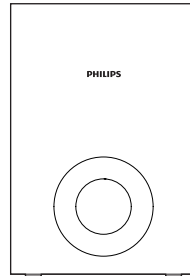


Quick start guide

PHILIPS



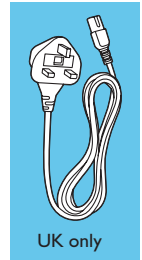
- EN** Before using your product, read all accompanying safety information
- ES** Antes de usar su producto, lea toda la información de seguridad adjunta
- FR-CA** Avant d'utiliser votre appareil, prenez le temps de lire toute l'information de sécurité connexe



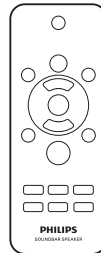
4 X



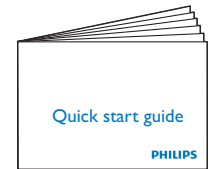
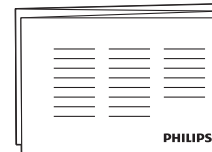
Power Cord



UK only

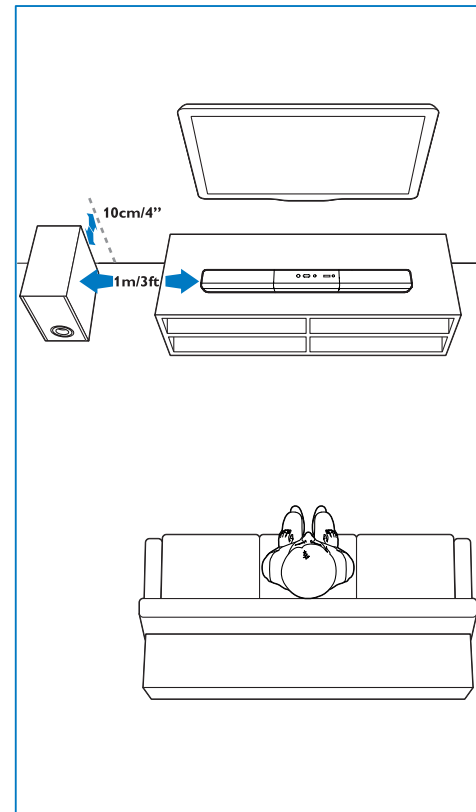
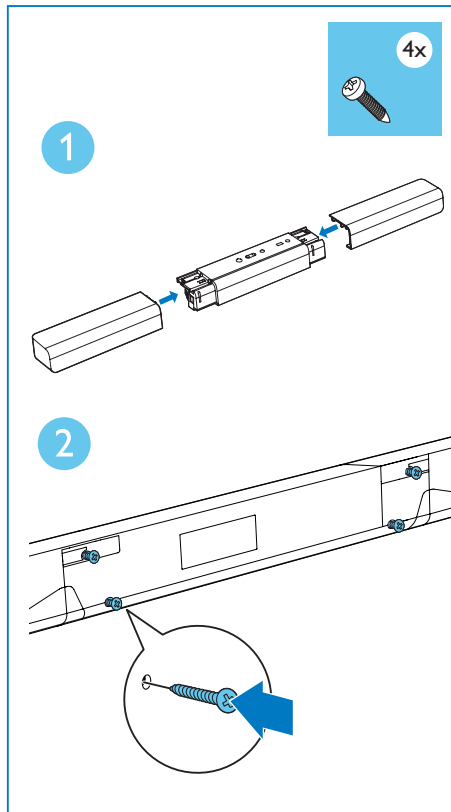


AAA

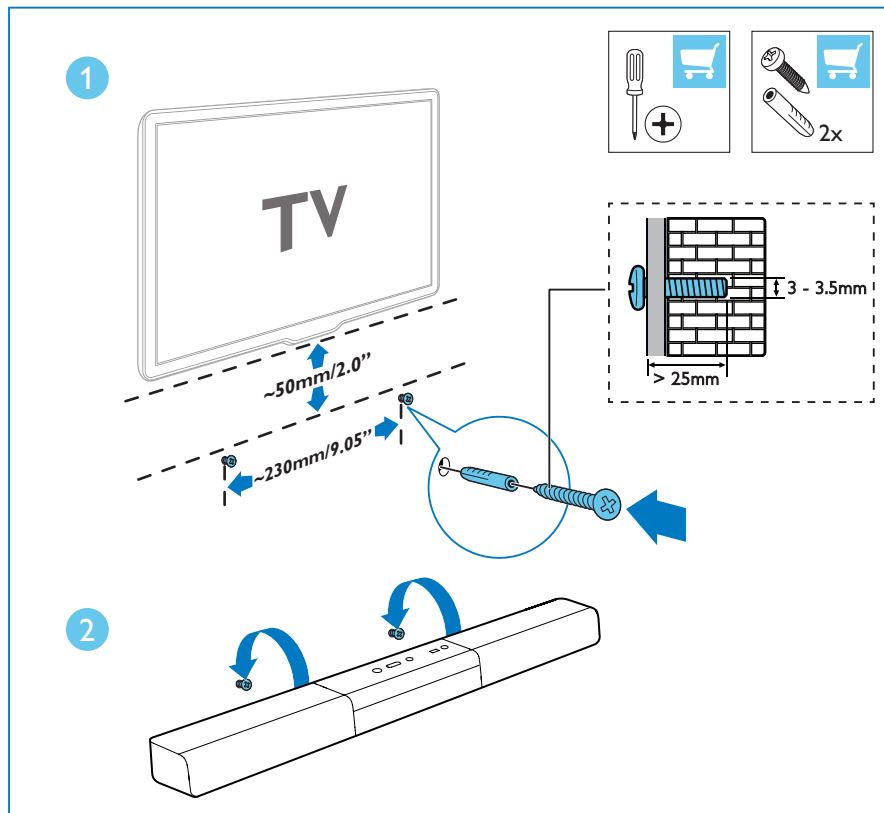


1

- EN** Assemble your SoundBar
Position the SoundBar
- ES** Montaje del SoundBar:
Colocación del SoundBar:
- FR-CA** Montez votre SoundBar:
Positionnez le SoundBar:

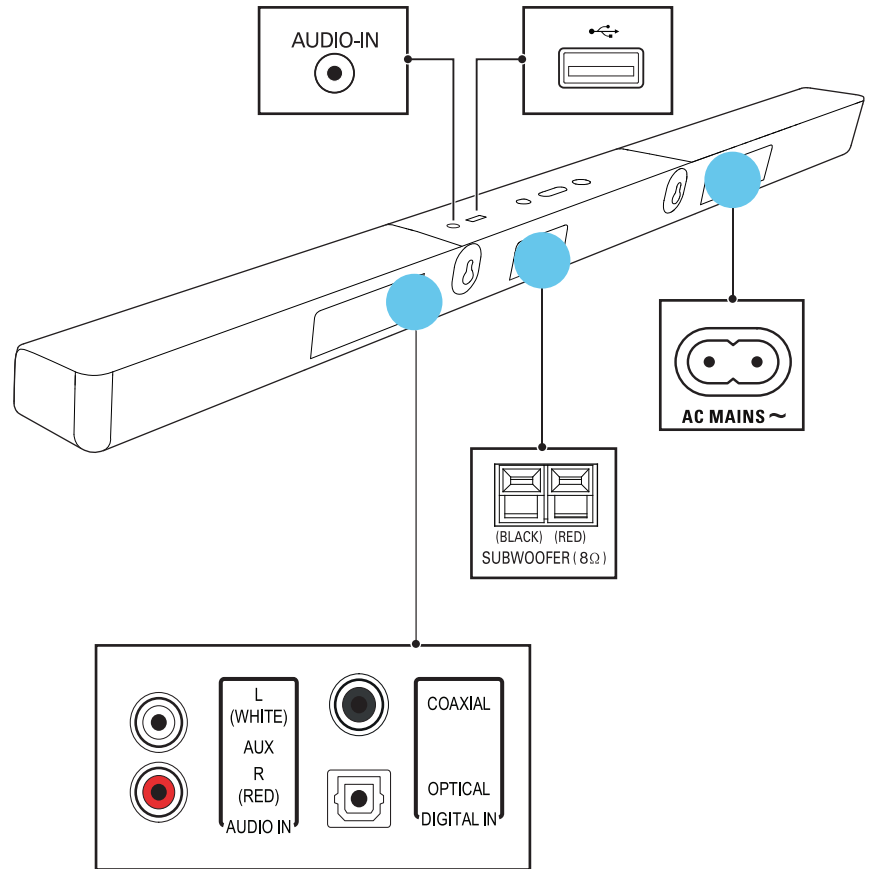


- EN** Wall mount the SoundBar (optional)
ES Montaje en pared del SoundBar (opcional)
FR-CA Fixez le SoundBar au mur (facultatif)



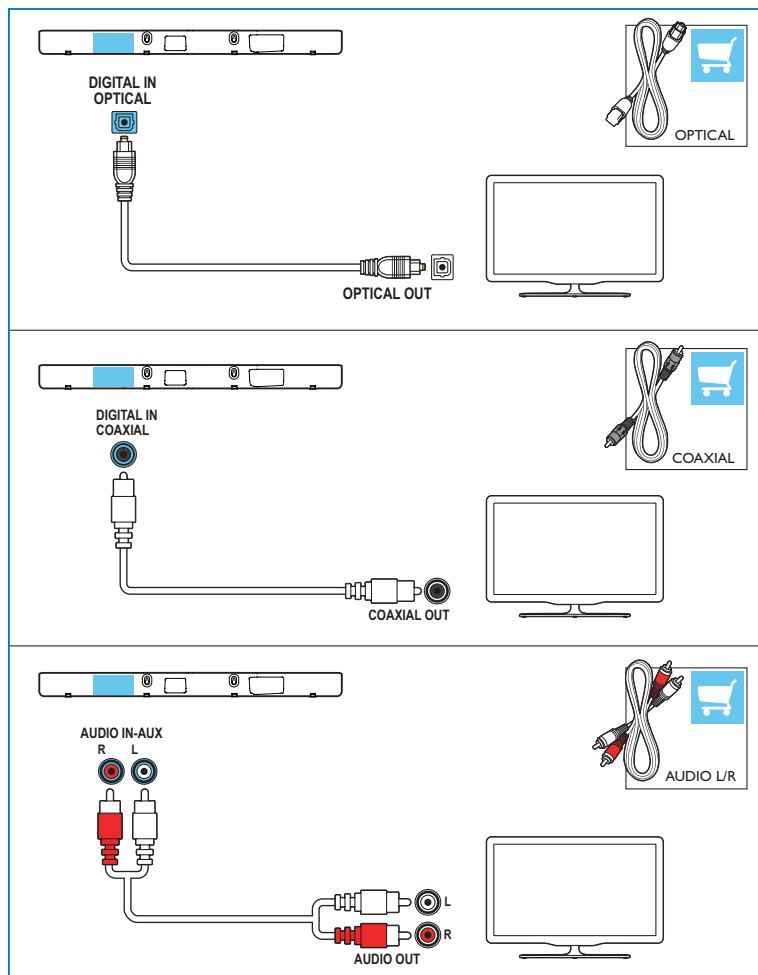
2

- EN** Connect the SoundBar
- ES** Conexión del SoundBar
- FR-CA** Branchez le SoundBar



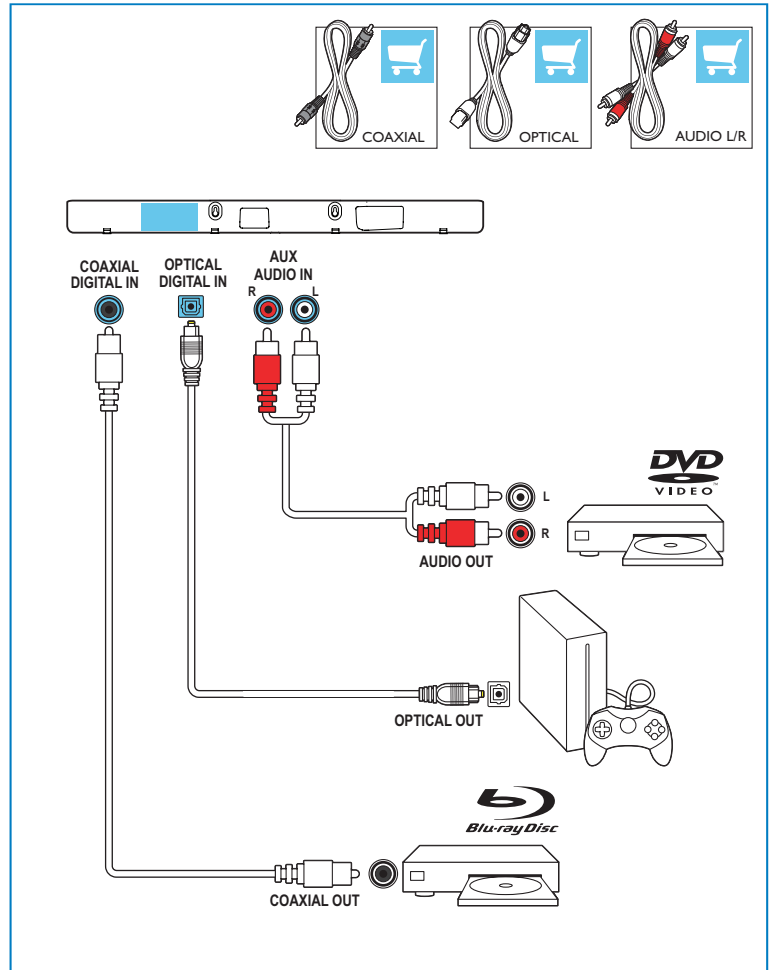
3

- EN** Hear audio from TV in one of the following ways (Mute your TV).
- ES** Escuche el audio del televisor de una de las siguientes formas (silenciar el televisor).
- FR-CA** Vous pouvez diffuser l'audio du téléviseur des façons suivantes (son du téléviseur coupé).



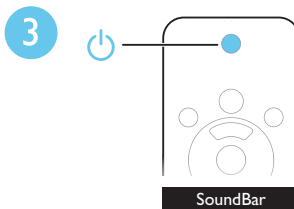
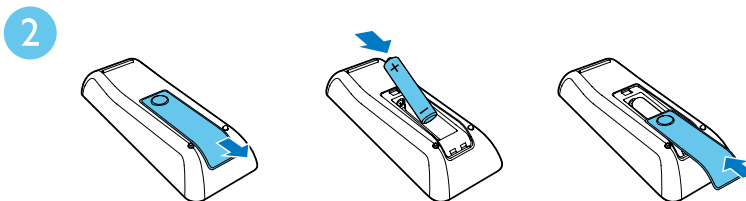
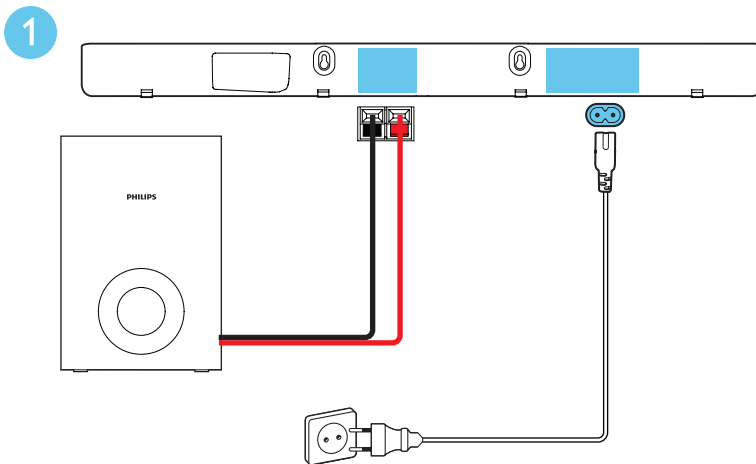
4

- EN** Enjoy audio from your devices
- ES** Disfrute el audio de sus dispositivos
- FR-CA** Profitez du contenu audio de vos appareils



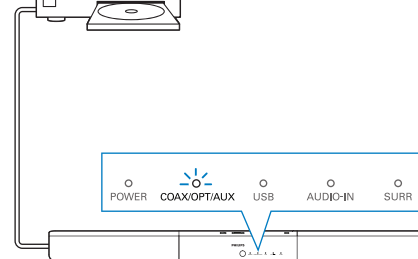
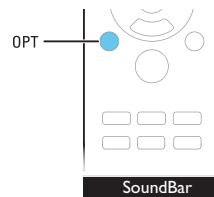
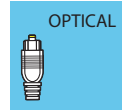
5

- EN** Switch on the SoundBar
- ES** Encendido del SoundBar
- FR-CA** Allumez le SoundBar

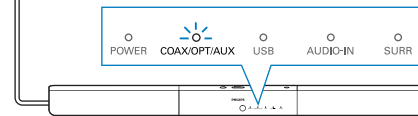
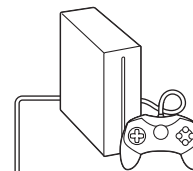
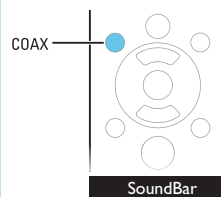


6

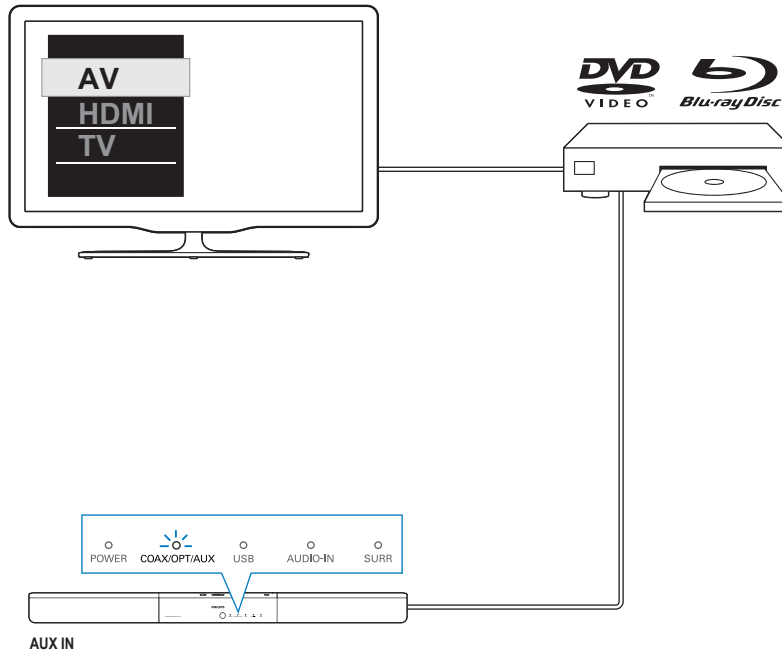
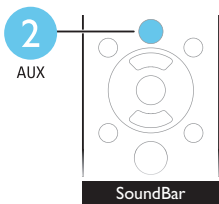
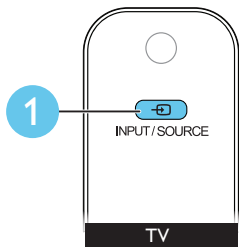
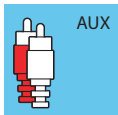
- EN** Select the correct audio source
- ES** Selección de la fuente de audio correcta
- FR-CA** Sélectionnez la source audio appropriée



DIGITAL IN OPTICAL

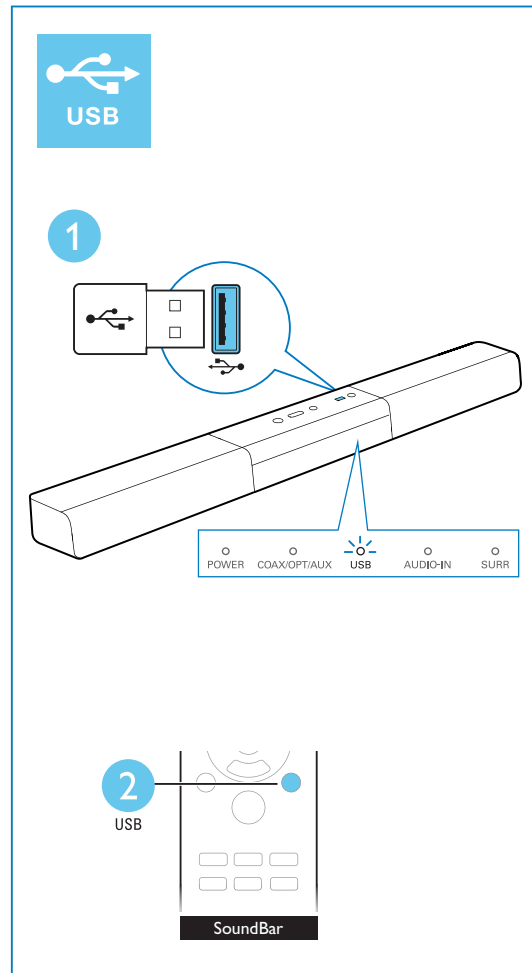
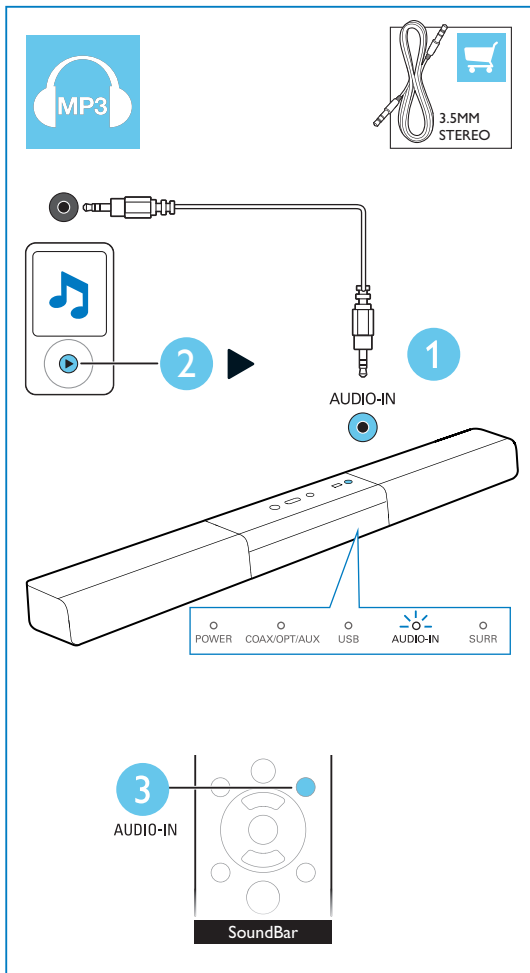


DIGITAL IN COAXIAL



7

- EN** Play other devices
- ES** Reproducción de otros dispositivos
- FR-CA** Lisez le contenu d'autres appareils





- EN** For more information about using this product,
visit www.philips.com/support
- ES** Para obtener más información sobre este producto,
visite www.philips.com/support
- FR-CA** Pour en savoir plus sur l'utilisation de ce produit,
visitez le site www.philips.com/support



Manufactured under license from Dolby Laboratories. Dolby and the double-D symbol are trademarks of Dolby Laboratories.



Non-contractual images. / Images non contractuelles. / Außervertragliche Bilder:
All registered and unregistered trademarks are property of their respective owners.
Specifications are subject to change without notice
Trademarks are the property of Koninklijke Philips Electronics
N.V. or their respective owners
2012 © Koninklijke Philips Electronics N.V. All rights reserved
www.philips.com
HTL2151_F7_QSG_V1.0

