

Always there to help you

Register your product and get support at
www.philips.com/support



HTD3510
HTD3540
HTD3570

User manual

PHILIPS

Contents

1 Important	2
Safety	2
Care for your product	3
Care of the environment	3

2 Your home theater	4
Main unit	4
Remote control	4
Connectors	5

3 Connect and set up	7
Connect speakers	7
Connect to TV	8
Connect audio from TV and other devices	9
Set up speakers	10
Set up EasyLink (HDMI-CEC control)	10

4 Use your home theater	12
Access the home menu	12
Discs	12
Data files	13
USB storage devices	13
Audio, video, and picture options	14
Radio	15
MP3 player	15
Karaoke	16
Choose sound	16

5 Change settings	17
Language settings	17
Picture and video settings	17
Audio settings	17
Parental control settings	18
Display settings	18
Energy saving settings	18
Restore default settings	18

6 Update software	20
Check software version	20
Update software through USB	20

7 Product specifications	21
---------------------------------	----

8 Troubleshooting	23
--------------------------	----

9 Notice	25
Copyright	25
Trademarks	25

10 Language code	26
-------------------------	----

1 Important

Read and understand all instructions before you use your home theater. If damage is caused by failure to follow instructions, the warranty does not apply.

Safety

Risk of electric shock or fire!

- Never expose the product and accessories to rain or water. Never place liquid containers, such as vases, near the product. If liquids are spilt on or into the product, disconnect it from the power outlet immediately. Contact Philips Consumer Care to have the product checked before use.
- Never place the product and accessories near naked flames or other heat sources, including direct sunlight.
- Never insert objects into the ventilation slots or other openings on the product.
- Where the mains plug or an appliance coupler is used as the disconnect device, the disconnect device shall remain readily operable.
- Batteries (battery pack or batteries installed) shall not be exposed to excessive heat such as sunshine, fire or the like.
- Disconnect the product from the power outlet before lightning storms.
- When you disconnect the power cord, always pull the plug, never the cable.

Risk of short circuit or fire!

- Before you connect the product to the power outlet, ensure that the power voltage matches the value printed on the back or bottom of the product. Never connect the product to the power outlet if the voltage is different.

Risk of injury or damage to the home theater!

- For wall-mountable products, use only the supplied wall mount bracket. Secure the wall mount to a wall that can support the combined weight of the product and the wall mount. Koninklijke Philips Electronics N.V. bears no responsibility for improper wall mounting that results in accident, injury or damage.
- For speakers with stands, use only the supplied stands. Secure the stands to the speakers tightly. Place the assembled stands on flat, level surfaces that can support the combined weight of the speaker and stand.
- Never place the product or any objects on power cords or on other electrical equipment.
- If the product is transported in temperatures below 5°C, unpack the product and wait until its temperature matches room temperature before connecting it to the power outlet.
- Visible and invisible laser radiation when open. Avoid exposure to beam.
- Do not touch the disc optical lens inside the disc compartment.
- Parts of this product can be made of glass. Handle with care to avoid injury and damage.

Risk of overheating!

- Never install this product in a confined space. Always leave a space of at least four inches around the product for ventilation. Ensure curtains or other objects never cover the ventilation slots on the product.

Risk of contamination!

- Do not mix batteries (old and new or carbon and alkaine, etc.).
- Danger of explosion if batteries are incorrectly replaced. Replace only with the same or equivalent type.
- Remove batteries if they are exhausted or if the remote control is not to be used for a long time.
- Batteries contain chemical substances, they should be disposed of properly.

Risk of swallowing batteries!

- The product/remote control may contain a coin/button type battery, which can be swallowed. Keep the battery out of reach of children at all times! If swallowed, the battery can cause serious injury or death. Severe internal burns can occur within two hours of ingestion.
- If you suspect that a battery has been swallowed or placed inside any part of the body, seek immediate medical attention.
- When you change the batteries, always keep all new and used batteries out of reach of children. Ensure that the battery compartment is completely secure after you replace the battery.
- If the battery compartment cannot be completely secured, discontinue use of the product. Keep out of reach of children and contact the manufacturer.



This is CLASS II apparatus with double insulation, and no protective earth provided.

Care for your product

- Do not insert any objects other than discs into the disc compartment.
- Do not insert warped or cracked discs into the disc compartment.
- Remove discs from the disc compartment if you are not using the product for an extended period of time.
- Use only microfiber cloth to clean the product.

Care of the environment



Your product is designed and manufactured with high quality materials and components, which can be recycled and reused.

Never dispose of your product with other household waste. Please inform yourself about the local rules on the separate collection of electrical and electronic products and batteries. The correct disposal of these products helps prevent potentially negative consequences on the environment and human health.

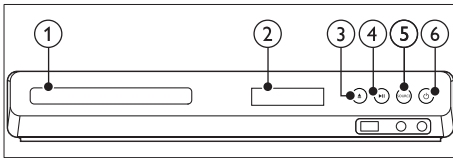
Your product contains batteries, which cannot be disposed of with normal household waste. Please inform yourself about the local rules on separate collection of batteries. The correct disposal of batteries helps prevent potentially negative consequences on the environment and human health.

Please visit www.recycle.philips.com for additional information on a recycling center in your area.

2 Your home theater

Congratulations on your purchase, and welcome to Philips! To fully benefit from the support that Philips offers, register your home theater at www.philips.com/welcome.

Main unit



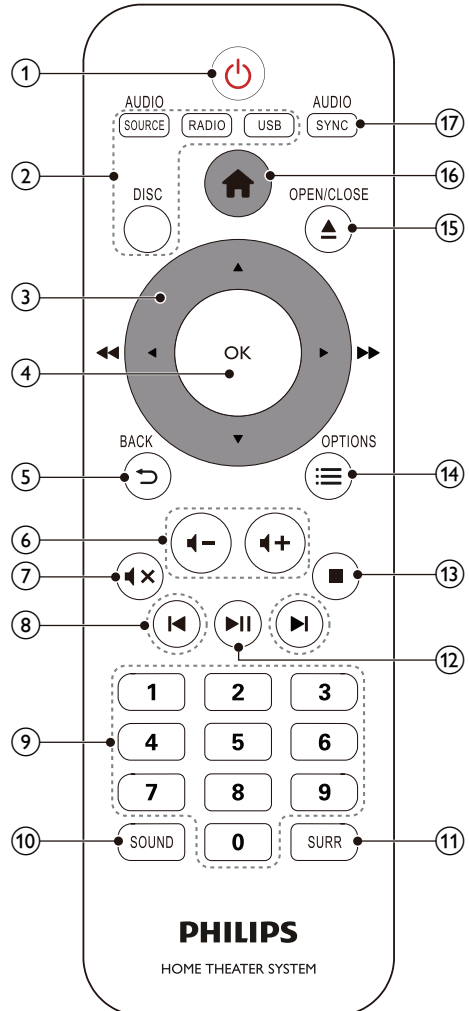
- ① Disc compartment
- ② Display panel
- ③ ▲ (Open/Close)
Open or close the disc compartment, or eject the disc.
- ④ ▶|| (Play/Pause)
Start, pause or resume play.
- ⑤ SOURCE
Select an audio or video source for the home theater.
- ⑥ ⏻ (Standby-On)
Switch the home theater on or to standby.

Front panel display	Indication
HOME	Home
RADIO	Radio
DISC	Disc
AUX	Aux In
OPT I	Optical In
AUD I	Audio In
OPEN	Open
CLOSE	Close
LOAD	Load

Front panel display	Indication
PAUSE	Pause
----	Mute

Remote control

This section includes an overview of the remote control.



- ① **⏻ (Standby-On)**
 - Switch the home theater on or to standby.
 - When EasyLink is enabled, press and hold for at least three seconds to switch all connected HDMI CEC compliant devices to standby.
- ② **Source buttons**
 - **DISC:** Switch to disc source. Access or exit the disc menu when you play a disc.
 - **AUDIO SOURCE:** Select an audio input source.
 - **RADIO:** Switch to FM radio.
 - **USB:** Switch to USB storage device.
- ③ **Navigation buttons**
 - Navigate menus.
 - In video mode, press left or right to fast backward or fast forward; press up or down to slow forward or slow backward (for DVD video only).
 - In radio mode, press left or right to search a radio station; press up or down to fine tune a radio frequency.
- ④ **OK**
Confirm an entry.
- ⑤ **↶ BACK**
Return to a previous menu screen.
- ⑥ **⏪ +/-**
Increase or decrease volume.
- ⑦ **⏸ (Mute)**
Mute or restore volume.
- ⑧ **⏮ / ⏭ (Previous/Next)**
 - Skip to the previous or next track, chapter or file.
 - In radio mode, select a preset radio station.
- ⑨ **Numeric buttons**
Select an item to play.
- ⑩ **SOUND**
Select a sound mode.
- ⑪ **SURR**
Select surround sound or stereo sound.

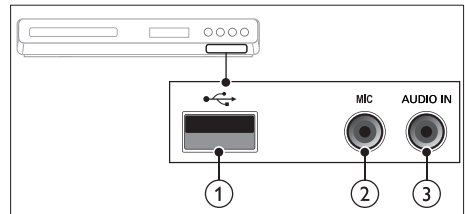
- ⑫ **▶ || (Play/Pause)**
Start, pause or resume play.
- ⑬ **■ (Stop)**
Stop play.
- ⑭ **☰ OPTIONS**
Access more play options while playing a disc or a USB storage device.
- ⑮ **▲ (Open/Close)**
Open or close the disc compartment.
- ⑯ **🏠 (Home)**
Access or exit the home menu.
- ⑰ **AUDIO SYNC**
 - Select an audio language or channel.
 - Press and hold to access audio delay setting, then press **Navigation buttons** (left/right) to delay the audio to match the video.

Connectors

This section includes an overview of the connectors available on your home theater.

Front

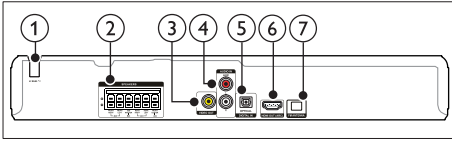
Front connectors



- ① **🔌 (USB)**
Audio, video or picture input from a USB storage device.
- ② **MIC**
Audio input from a microphone.

- ③ **AUDIO IN**
Audio input from an MP3 player (3.5mm jack).

Back connectors



- ① **AC MAINS**
Fixed AC power cable.
- ② **SPEAKERS**
Connect to the supplied speakers and subwoofer.
- ③ **VIDEO OUT**
Connect to the composite video input on the TV.
- ④ **AUDIO IN-AUX**
Connect to an analog audio output on the TV or an analog device.
- ⑤ **DIGITAL IN-OPTICAL**
Connect to an optical audio output on the TV or a digital device.
- ⑥ **HDMI OUT (ARC)**
Connect to the HDMI input on the TV.
- ⑦ **FM ANTENNA**
Connect the supplied antenna for radio reception.

3 Connect and set up

This section helps you connect your home theater to a TV and other devices, and then set it up.

For information about the basic connections of your home theater and accessories, see the quick start guide.

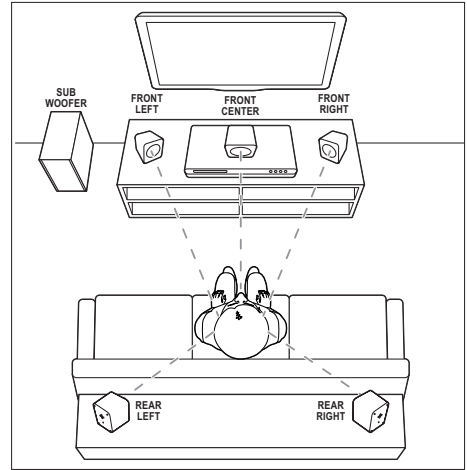
Note

- For identification and supply ratings, see the type plate at the back or bottom of the product.
- Before you make or change any connections, make sure that all devices are disconnected from the power outlet.

Connect speakers

The speaker cables are color-coded for easy connection. To connect a speaker to your home theater, match the color on the speaker cable to the color on the connector.

Speaker position plays a critical role in setting up a surround sound effect. For best effect, position all the speakers towards the seating position and place them close to your ear level (seated).



*The actual speaker shapes may vary from the illustration above.

Note

- Surround sound depends on factors such as room shape and size, type of wall and ceiling, windows and reflective surfaces, and speaker acoustics. Experiment with the speaker positions to find the optimum setting for you.

Follow these general guidelines for speakers placement.

- 1 Seating position:**
This is the center of your listening area.
- 2 FRONT CENTER (front center) speaker:**
Place the center speaker directly in front of the seating position, either above or below your TV.
- 3 FRONT LEFT (front left) and FRONT RIGHT (front right) speakers:**
Place the left and right speakers in the front, and at equal distance from the center speaker. Make sure that the left, right, and the center speakers are at equal distance from your seating position.

- 4 **REAR LEFT** (rear left) and **REAR RIGHT** (rear right) speakers:
Place the rear surround speakers to the left and right side of your seating position, either in line with it or slightly behind it.
- 5 **SUBWOOFER** (subwoofer):
Place the subwoofer at least one meter to the left or right of the TV. Leave about 10-centimeter clearance from the wall.

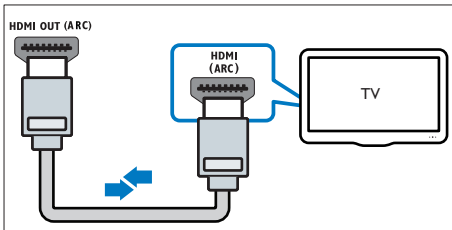
Connect to TV

Connect your home theater to a TV to watch videos. You can listen to the TV audio through your home theater speakers. Use the best quality connection available on your home theater and TV.

Option 1: Connect to TV through HDMI (ARC)

Best quality video

Your home theater supports HDMI version with Audio Return Channel (ARC). If your TV is HDMI ARC compliant, you can hear the TV audio through your home theater by using a single HDMI cable.



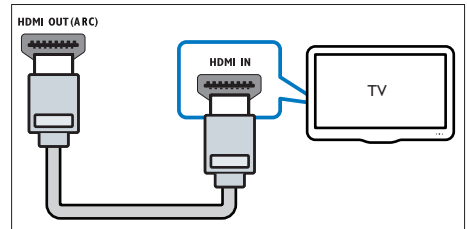
- 1 Using a High Speed HDMI cable, connect the **HDMI OUT (ARC)** connector on your home theater to the **HDMI ARC** connector on the TV.
 - The **HDMI ARC** connector on the TV might be labeled differently. For details, see the TV user manual.

- 2 On your TV, turn on HDMI-CEC operations. For details, see the TV user manual.
 - HDMI-CEC is a feature that enables CEC compliant devices that are connected through HDMI to be controlled by a single remote control, such as volume control for both the TV and the home theater. (see 'Set up EasyLink (HDMI-CEC control)' on page 10)
- 3 If you cannot hear the TV audio through your home theater; set up the audio manually. (see 'Set up the audio' on page 11)

Option 2: Connect to TV through standard HDMI

Best quality video

If your TV is not HDMI ARC compliant, connect your home theater to the TV through a standard HDMI connection.



- 1 Using a High Speed HDMI cable, connect the **HDMI OUT (ARC)** connector on your home theater to the **HDMI** connector on the TV.
- 2 Connect an audio cable to hear the TV audio through your home theater (see 'Connect audio from TV and other devices' on page 9).
- 3 On your TV, turn on HDMI-CEC operations. For details, see the TV user manual.
 - HDMI-CEC is a feature that enables CEC compliant devices that are

connected through HDMI to be controlled by a single remote control, such as volume control for both the TV and the home theater. (see 'Set up EasyLink (HDMI-CEC control)' on page 10)

- 4 If you cannot hear the TV audio through your home theater, set up the audio manually. (see 'Set up the audio' on page 11)

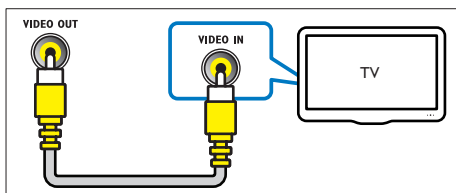
Note

- If your TV has a DVI connector, you can use an HDMI/DVI adapter to connect to TV. However, some of the features may not be available.

Option 3: Connect to the TV through composite video

Basic quality video

If your TV does not have HDMI connectors, use a composite video connection. A composite connection does not support high-definition video.



- 1 Using a composite video cable, connect the **VIDEO OUT** connector on your home theater to the **VIDEO IN** connector on the TV.
 - The composite video connector might be labeled **AV IN**, **COMPOSITE**, or **BASEBAND**.
- 2 Connect an audio cable to hear the TV audio through your home theater (see 'Connect audio from TV and other devices' on page 9).

- 3 When you watch TV programs, press **SOURCE** on your home theater repeatedly to select the correct audio input.

- 4 When you watch videos, switch your TV to the correct video input. For details, see the TV user manual.

Connect audio from TV and other devices

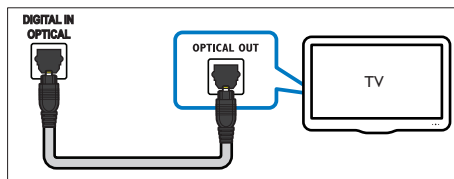
Play audio from TV or other devices through your home theater speakers. Use the best quality connection available on your TV, home theater, and other devices.

Note

- When your home theater and TV are connected through HDMI ARC, an audio connection is not required (see 'Option 1: Connect to TV through HDMI (ARC)' on page 8).

Option 1: Connect audio through a digital optical cable

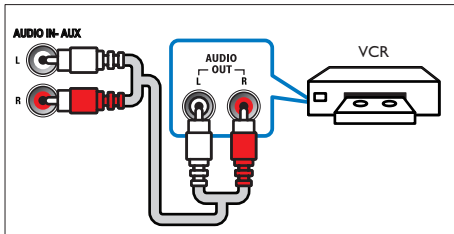
Best quality audio



- 1 Using an optical cable, connect the **OPTICAL** connector on your home theater to the **OPTICAL OUT** connector on the TV or other device.
 - The digital optical connector might be labeled **SPDIF** or **SPDIF OUT**.

Option 2: Connect audio through analog audio cables

Basic quality audio



- 1 Using an analog cable, connect the **AUX** connectors on your home theater to the **AUDIO OUT** connectors on the TV or other device.

Set up speakers

Set up the speakers manually to experience customized surround sound.

Before you start

Make the necessary connections described in the quick start guide, and then switch the TV to the correct source for your home theater:

- 1 Press **▲** (Home).
- 2 Select **[Setup]**, and then press **OK**.
- 3 Select **[Audio]** > **[Speaker Setup]**.
- 4 Press the **Navigation buttons** and **OK** to select and change:
 - **[Speakers Volume]**: Set the volume level of each speaker.
 - **[Speakers Delay]**: Set the delay time for speakers which are placed closer to the seating position in order to obtain equal audio transmission from all the speakers.

Set up EasyLink (HDMI-CEC control)

This home theater supports Philips EasyLink, which uses the HDMI-CEC (Consumer Electronics Control) protocol. EasyLink-compliant devices that are connected through HDMI can be controlled by a single remote control.

Note

- Depending on the manufacturer, HDMI-CEC is known by many names. For information on your device, see the user manual of the device.
- Philips does not guarantee 100% interoperability with all HDMI-CEC devices.

Before you start

- Connect your home theater to the HDMI-CEC compliant device through HDMI connection.
- Make the necessary connections described in the quick start guide, and then switch the TV to the correct source for your home theater.

Enable EasyLink

- 1 Press **▲** (Home).
- 2 Select **[Setup]**, and then press **OK**.
- 3 Select **[Video]**, and then press **OK**.
- 4 Select **[HDMI Setup]** > **[EasyLink Setup]** > **[EasyLink]** > **[On]**.
- 5 On your TV and other connected devices, turn on HDMI-CEC control. For details, see the user manual of the TV or other devices.
 - On your TV, set the audio output to 'Amplifier' (instead of TV speakers). For details, see the TV user manual.

EasyLink controls

With EasyLink, you can control your home theater, TV, and other connected HDMI-CEC compliant devices with a single remote control.

- **[One Touch Play]** (One-touch play): If one-touch play is enabled, press **⏻ (Standby-On)** on the remote control of your home theater to wake up the TV from standby.
- **[One Touch Standby]** (One-touch standby): If one-touch standby is enabled, your home theater can switch to standby with the remote control of the TV or other HDMI-CEC devices.
- **[Sys Audio Control]** (System audio control): If system audio control is enabled, the audio of the connected device is output through your home theater speakers automatically when you play the device.
- **[Audio Mapping]** (Audio input mapping): If system audio control does not work, map the connected device to the correct audio input connector on your home theater. (see 'Set up the audio' on page 11)

Note

- To change the EasyLink control settings, press **⬆ (Home)**, select **[Setup] > [Video] > [HDMI Setup] > [EasyLink Setup] > [EasyLink]**.

Set up the audio

If you cannot hear the audio output of a connected device through your home theater speakers, do the following:

- Check that you have enabled EasyLink on all the devices, (see 'Set up EasyLink (HDMI-CEC control)' on page 10) and on your TV, set the audio output to "Amplifier" (instead of TV speakers). For details, see the TV user manual, and
- setup the EasyLink audio control.

- 1 Press **⬆ (Home)**.
- 2 Select **[Setup]**, and then press **OK**.
- 3 Select **[Video]**, and then press **OK**.
- 4 Select **[HDMI Setup] > [EasyLink Setup] > [Sys Audio Control] > [On]**.
 - To play the audio from the TV speakers, select **[Off]**, and skip the following steps.
- 5 Select **[HDMI Setup] > [EasyLink Setup] > [Audio Mapping]**.
- 6 Follow the onscreen instructions to map the connected device to the audio inputs on your home theater.
 - If you connect your home theater to the TV through an **HDMI ARC** connection, make sure that the TV audio is mapped to the ARC input on your home theater.

4 Use your home theater

This section helps you use the home theater to play media from a wide range of sources.

Before you start

- Make the necessary connections described in the Quick start guide and the user manual.
- Switch the TV to the correct source for the home theater.

Access the home menu

The home menu provides easy access to connected devices, setup and other useful features in your home theater.

- 1 Press **⬆** (Home).
↳ The home menu is displayed.
- 2 Press the **Navigation buttons** and **OK** to select the following:
 - **[DISC]**: Start disc play.
 - **[USB]**: Access the USB content browser.
 - **[Karaoke]**: Access Karaoke.
 - **[Setup]**: Access menus to change video, audio and other settings.
- 3 Press **⬆** (Home) to exit.

Discs

Your home theater can play DVDs, VCDs, and CDs. It can also play discs that you've made at home, such as CD-R discs of photos and music.

- 1 Insert a disc into the home theater.
- 2 If the disc does not play automatically, press **DISC** or select **[DISC]** from the home menu.

- 3 Press the play buttons to control play (see 'Play buttons' on page 12).

Play buttons

Button	Action
Navigation buttons	Navigate menus.
OK	Confirm an entry.
▶ (Play/Pause)	Start, pause or resume play.
■	Stop play.
◀ / ▶	Skip to the previous or next track, chapter or file.
◀◀ / ▶▶	Fast backwards or fast forwards. Press repeatedly to change the search speed.
Navigation buttons (left/right)	Rotate the picture clockwise or counter-clockwise.
Navigation buttons (up/down)	Flip the picture vertically or horizontally.
DISC	Access or exit the disc menu.
AUDIO SYNC	Select an audio language or channel.
☰ OPTIONS	Access more options when you play your audio, video, or media files. (see 'Audio, video, and picture options' on page 14)

Synchronize picture and sound

If the audio and video are not synchronized, delay the audio to match the video.

- 1 While playing video, press and hold **AUDIO SYNC**.
↳ Audio sync menu is displayed.
- 2 Press the **Navigation buttons** (left/right) to synchronize the audio with the video, and then press **OK**.

Note

- Picture and sound can be synchronized through the setup menu, press **⬆** (Home), select **[Setup] > [Audio] > [Audio Sync]**.

Display menu for VCD and SVCD

Display the content menu on VCD and SVCD discs.

- 1 Press **⬆** (Home).
- 2 Select **[Setup]**, and then press **OK**.
- 3 Select **[Preferences] > [PBC]**.
 - **[PBC]**: Enable or disable the content menu navigation of VCD and SVCD discs with Play Back Control feature.

Data files

Your home theater can play pictures, audio and video files contained in a disc or a USB storage device. Before you play a file, check that the file format is supported by your home theater (see 'File formats' on page 21).

- 1 Play the files from a disc or USB storage device.
- 2 To stop play, press **■**.
 - To resume the video from where you stopped, press **▶** (Play).
 - To play the video from the start, press **OK**.

Note

- To play DivX DRM protected files, connect your home theater to a TV through an HDMI cable.

Subtitles

If your video has subtitles in multiple languages, select a subtitle language.

Note

- Make sure that the subtitle file has the exact same name as the video file. For example, if the video file is named 'movie.avi', name the subtitle file as 'movie.srt' or 'movie.sub'.
- Your home theater supports the following file formats: .srt, .sub, .txt, .ssa, .ass, .smi, and .sami. If the subtitles do not appear correctly, change the character set.

- 1 Press **≡** **OPTIONS**, and select a subtitle language under **SUBTITLE** option.
- 2 For DivX videos, if the subtitles do not appear correctly, continue the following steps to change the character set.
- 3 Press **⬆** (Home).
- 4 Select **[Setup]**, and then press **OK**.
- 5 Select **[Preferences] > [DivX Subtitle]**.
- 6 Select a character set that supports the subtitle.

Character Set	Language
[Chinese]	Simplified Chinese

VOD code for DivX

Before you purchase DivX videos and play them on your home theater, register the home theater on www.divx.com using the DivX VOD code.

- 1 Press **⬆** (Home).
- 2 Select **[Setup]**, and then press **OK**.
- 3 Select **[General] > [DivX(R) VOD Code]**.
 - ↳ The DivX VOD registration code for your home theater is displayed.

USB storage devices


Enjoy pictures, audio, and video stored on a USB storage device such as an MP4 player.

What you need

- A USB storage device that is formatted for FAT or NTFS file system, and complies with the Mass Storage Class.
- A media file in one of the supported file formats. (see 'File formats' on page 21)

Note

- If you use a USB extension cable, USB HUB or USB multi-reader, the USB storage device may not be recognized.

- 1 Connect a USB storage device to the  (USB) connector on your home theater.
- 2 Press **USB**.
↳ A content browser is displayed.
- 3 Select a file and then press **OK**.
- 4 Use the play buttons to control play.

Audio, video, and picture options

Use advanced features when you play audio, video, or media files from a disc or a USB storage device.

Audio options

- 1 While playing audio, press **≡ OPTIONS** repeatedly to select a repeat mode.

Video options

- 1 While viewing video, press **≡ OPTIONS**.
↳ The video options menu is displayed. Depending on the video source, some options are not available.
- 2 Press the **Navigation buttons** and **OK** to select and change:
 - **[Info]**: Display the play information.
 - **[PBC]**: Enable or disable the content menu navigation of VCD and SVCD discs with Play Back Control feature.

- **[Aspect ratio]**: Select a display ratio of picture that matches your TV screen.
- **[Repeat]**: Select a repeat play mode.
- **[Zoom]**: Zoom into a video scene or picture. Press the **Navigation buttons** (left/right) to select a zoom factor.
- **[Subtitle]**: Select subtitle language for video.
- **[Angle]**: Select video scenes recorded in different camera angles.
- **[Microphone]**: Turn the microphone on or off.
- **[Karaoke setup]**: Access the Karaoke setup menu.
- **[Vocal]**: Select a Karaoke audio mode, or turn off original vocals.

Picture options

- 1 While viewing pictures, press **≡ OPTIONS**.
- 2 Press the **Navigation buttons** and **OK** to select and change:
 - **[Color]**: Turn on or off the color mode.
 - **[Photo preview]**: Display the thumbnail of photos.
 - **[Repeat]**: Select a repeat mode for slideshow.
 - **[Zoom]**: Zoom into a video scene or picture. Press the **Navigation buttons** (left/right) to select a zoom factor.
- 3 Press **◀ / ▶** to go to previous or next preview page.
- 4 Press the **Navigation buttons** and **OK** to select a picture.

Musical slideshow

If the picture and audio files are from the same disc or USB storage device, you can create a musical slideshow.

- 1 Select an audio track and then press **OK**.
- 2 Press **➔ BACK** and then go to the picture folder.
- 3 Select a picture and then press **OK** to start the slideshow.

- 4 Press **■** to stop slideshow.
- 5 Press **■** again to stop music.

Radio

Listen to FM radio on your home theater, and store up to 40 radio stations.

Note

- AM and digital radio are not supported.
- If no stereo signal is detected, you are prompted to install the radio stations again.

- 1 Connect the FM antenna to the **FM ANTENNA** on your home theater.
 - For the best reception, place the antenna away from your TV or other sources of radiation.
- 2 Press **RADIO** to switch to radio source.
 - ↳ If you have already installed the radio stations, the last channel that you listened to is played.
 - ↳ If you have not installed any radio stations, the message **AUTO INSTALL...PRESS PLAY** appears on the display panel. Press **▶ (Play)** to install radio stations.
- 3 Use the remote control to listen or to change radio stations.

Play buttons

Button	Action
◀ / ▶	Select a preset radio station.

or
Alphanumeric buttons

Navigation buttons	Left/Right: Search for a radio station. Up/Down: Fine tune a radio frequency.
---------------------------	--

Button	Action
■	Press to stop the installation of radio stations. Press and hold to erase the preset radio station.

RADIO	Manual:
	1) In radio mode, press RADIO .
	2) When a radio frequency blinks, press OK to store the radio station.
	3) Repeat step 1 and 2 to store other stations.
	Automatic:
	In radio mode, press and hold RADIO for three seconds to reinstall all the available radio station.

Tuning grid

In some countries, you can toggle the FM tuning grid between 50 kHz and 100 kHz.

- 1 Press **RADIO** to switch to radio source.
- 2 Press **■**.
- 3 Press and hold **▶ (Play)** to toggle between 50 kHz or 100 kHz.

MP3 player

Connect a MP3 player to play audio files.

What you need

- An MP3 player.
 - A 3.5mm stereo audio cable.
- 1 Using the 3.5mm stereo audio cable, connect the MP3 player to the **AUDIO IN** connector on your home theater.
 - If you use 6.5mm stereo audio cable, connect the MP3 player to your home theater using a 3.5mm - 6.5mm converter jack.

- 2 Press **AUDIO SOURCE** repeatedly until **AUDIO IN** appears on the display panel.
- 3 Press the buttons on the MP3 player to select and play audio files.

Karaoke

Play a Karaoke disc on your home theater and sing along with the music.

What you need

- A Karaoke microphone.
- Karaoke discs.

Note

- To prevent loud feedback or unexpected noise, turn the microphone volume to the minimum before you connect the microphone to your home theater.

Play karaoke music

- 1 While playing a karaoke disc, press **⬆** (**Home**).
↳ The home menu is displayed.
- 2 Select **[Karaoke]**, and then press **OK**.
↳ The karaoke setup menu is displayed.
- 3 Press the **Navigation buttons** (up/down) and **OK** to change the following settings:
 - **[Microphone]**: Turn the microphone on or off.
 - **[Mic Volume]**: Change the microphone volume.
 - **[Echo Level]**: Change the echo level.
 - **[Karaoke Scoring]**: Select a difficulty level to score your singing. After a song ends, a score is given.
 - **[Karaoke Idol]**: Have a Karaoke contest with your friends. Follow the on-screen instructions to start the contest.
 - **[Key Shift]**: Change the pitch to match your voice.
 - **[Vocal]**: Select a Karaoke audio mode, or turn off original vocals.

Choose sound

This section helps you choose the ideal sound for your video or music.

Sound mode

Select predefined sound modes to suit your video or music.

- 1 Press **SOUND** repeatedly to select a sound mode.
 - **[Movie Mode]**: Enjoy a cinematic audio experience, specially enhanced for movies.
 - **[Music Mode]**: Recreate the original recording environment of your music, in the studio or at a concert.
 - **[Original]**: Experience the original sound of your movies and music, without added sound effects.
 - **[News]**: Hear every word with optimized speech and clear vocals.
 - **[Gaming]**: Enjoy thrilling arcade sounds, ideal for action-packed video games or loud parties.

Surround sound mode

Experience an immersive audio experience with surround sound modes.

- 1 Press **SURR** repeatedly to select a surround mode.
 - **[Multi Channel]**: Traditional 5.1 channel for a more relaxing cinematic experience.
 - **[Stereo]**: Two-channel stereo sound. Ideal for listening to music.

Note

- If the audio source is a 2.1 channel, multi-channel mode will output 5-channel stereo sound.

5 Change settings

The home theater settings are already configured for optimal performance. Unless you have a reason to change a setting, we recommend that you keep the default setting.

Note

- You cannot change a setting that is grayed out.
- To return to the previous menu, press **↶** BACK. To exit the menu, press **🏠** (Home).

Language settings

Onscreen display language

- 1 Press **🏠** (Home).
- 2 Select **[Setup]** and then press **OK**.
- 3 Select **[General]** and then press **OK**.
 - **[OSD Language]**: Select a display language for menu.

Disc language

- 1 Press **🏠** (Home).
- 2 Select **[Setup]** and then press **OK**.
- 3 Select **[Preferences]** and then press **OK**.
 - **[Audio]**: Select an audio language for discs.
 - **[Subtitle]**: Select a subtitle language for discs.
 - **[Disc Menu]**: Select a menu language for discs.

Note

- If your preferred disc language is not available, select **[Others]** from the list, and enter the 4-digit language code found at the end of this user manual (see 'Language code' on page 26).
- If you select a language that is not available on a disc, the home theater uses the default language of the disc.

Picture and video settings

- 1 Press **🏠** (Home).
- 2 Select **[Setup]** and then press **OK**.
- 3 Select **[Video]** and then press **OK**.
 - **[TV System]**: Select a video format supported by the TV.
 - **[TV Display]**: Select a picture format to fit the TV screen.
 - **[Picture Setting]**: Select animation for the slide show.
 - **[HD JPEG]**: Enable this feature to view high-definition JPEG pictures through HDMI connection.
 - **[HDMI Setup]**: Access the following setup through HDMI connection.
 - * **[Resolution]**: Select a resolution for high definition videos.
 - * **[HDMI Deep Color]**: Recreate the natural world on your TV screen by displaying vivid images using billion colors. Your home theater must be connected to a Deep Color enabled TV through an HDMI cable.
 - * **[Wide Screen]**: Select a display format for wide screen videos.
 - * **[EasyLink Setup]**: Set up EasyLink control (see 'Set up EasyLink (HDMI-CEC control)' on page 10).

Note

- If you change a setting, make sure that the TV supports the new setting.

Audio settings

- 1 Press **🏠** (Home).
- 2 Select **[Setup]** and then press **OK**.

- 3 Select **[Audio]** and then press **OK**.
 - **[HDMI Audio]**: Set the HDMI audio output from your TV, or disable HDMI audio output from the TV.
 - **[Audio Sync]**: Set audio delay if audio and video cannot be matched.
 - **[Speaker Setup]**: Set up speakers for best surround sound experience.
 - **[Sound Mode]**: Select a predefined sound mode to suit your video and music.
 - **[Treble/Bass]**: Set the high frequency (treble) and low frequency (bass) settings of the home theater.
 - **[Night Mode]**: Select quiet or full dynamic sound. Night mode decreases the volume of loud sounds and increases volume of sounds such as speech. Applicable to Dolby Digital encoded DVD discs only.

Parental control settings

Password and Ratings

- 1 Press **▲** (**Home**).
- 2 Select **[Setup]** and then press **OK**.
- 3 Select **[Preferences]** and then press **OK**.
 - **[Password]**: Set or change your password for parental control access. If you do not have a password or have forgotten your password, enter 000000.
 - **[Parental Control]**: Enable maturity-based restricted access for playback of DVD-video that are recorded with ratings. To play discs irrespective of the rating, select **[8 Adult]**.

Lock disc

- 1 Press **▲** (**Home**).
- 2 Select **[Setup]** and then press **OK**.

- 3 Select **[General]** and then press **OK**.
 - **[Disc Lock]**: Lock the disc to restrict play. You can lock up to 20 discs on your home theater.

Note

- To play a locked disc, follow the onscreen instructions to enter the password, and then press **OK**.

Display settings

- 1 Press **▲** (**Home**).
- 2 Select **[Setup]** and then press **OK**.
- 3 Select **[Preferences]** and then press **OK**.
 - **[PBC]**: Enable or disable the content menu navigation of VCD and SVCD discs with Play Back Control feature.

Energy saving settings

- 1 Press **▲** (**Home**).
- 2 Select **[Setup]** and then press **OK**.
- 3 Select **[General]** and then press **OK**.
 - **[Display Dim]**: Set the brightness of the home theater front panel display.
 - **[Sleep Timer]**: Switch the home theater to standby mode after the elapsed time.
 - **[Auto Standby]**: Switch the home theater to standby mode after 25 minutes of no activity when in disc or USB mode.

Restore default settings

- 1 Press **▲** (**Home**).
- 2 Select **[Setup]** and then press **OK**.
- 3 Select **[Preferences]** > **[Default]**, and then press **OK**.

- 4 Follow the onscreen message to restore default setting.
 - ↳ Your home theater is reset to its default settings, except for password, parental control and disc lock settings.

6 Update software

Philips continually tries to improve its products. To get the best features and support, update your home theater with the latest software.

Compare the version of your current software with the latest version on www.philips.com/support. If the current version is lower than the latest version available on the Philips support website, upgrade your home theater with the latest software.

Caution

- Do not install a lower version of software than the current version installed on your product. Philips is not liable for problems caused due to software downgrade.

Check software version

Check the version of the current software installed on your home theater:

- 1 Press **⬆** (Home).
- 2 Select **[Setup]** and then press **OK**.
- 3 Select **[Preferences]** > **[Version Info]**.
↳ The software version is displayed.

Update software through USB

What you need

- A USB flash drive that is FAT or NTFS-formatted, with at least 75MB of memory. Do not use a USB hard drive.
- A computer with Internet access.
- An archive utility that supports the ZIP file format.

Step 1: Download the latest software

- 1 Connect a USB flash drive to your computer.
- 2 In your web browser, go to www.philips.com/support.
- 3 At the Philips Support website, find your product and locate the **Software and drivers**.
↳ The software update is available as a zip file.
- 4 Save the zip file in the root directory of your USB flash drive.
- 5 Use the archive utility to extract the software update file in the root directory.
- 6 Disconnect the USB flash drive from your computer.

Step 2: Update the software

Caution

- Do not switch off the home theater or remove the USB flash drive during the update.

- 1 Connect the USB flash drive containing the downloaded file to your home theater:
 - Make sure that the disc compartment is closed and there is no disc inside.
- 2 Switch your TV to the correct source for your home theater.
- 3 Follow the onscreen instructions to confirm the update.
↳ Once complete, the home theater automatically switches off and restarts. If it does not, disconnect the power cord for a few seconds and then reconnect it.

7 Product specifications

Note

- Specifications and design are subject to change without notice.

Region codes

The type plate on the back or bottom of the home theater shows which regions it supports.

Country	DVD
Europe, United Kingdom	
Asia Pacific, Taiwan, Korea	
Latin America	
Australia, New Zealand	
Russia, India	
China	

Media formats

- DVD-Video, DVD+R/+RW, DVD-R/-RW, DVD+R/-R DL, CD-R/CD-RW, Audio CD, Video CD/SVCD, Picture files, MP3 media, WMA media, DivX media, USB storage device

File formats

- Audio: .mp3, .wma
- Video: .avi, .divx, .mpeg, .mjpeg
- Picture: .jpg, .jpeg

Amplifier

- Total output power: 300W RMS (30% THD)
- Frequency response: 20 Hz-20 kHz / ± 3 dB
- Signal-to-noise ratio: > 65 dB (CCIR) / (A-weighted)
- Input sensitivity:
 - AUX: 2 V
 - AUDIO IN: 1 V

Video

- Signal system: PAL / NTSC/Multi
- HDMI output: 480i/576i, 480p/576p, 720p, 1080i, 1080p

Audio

- S/PDIF Digital audio input:
 - Optical: TOSLINK
- Sampling frequency:
 - MP3: 32 kHz, 44.1 kHz, 48 kHz
 - WMA: 44.1 kHz, 48 kHz
- Constant bit rate:
 - MP3: 32 kbps - 320 kbps
 - WMA: 64 kbps - 192 kbps

Radio

- Tuning range:
 - Europe/Russia/China: FM 87.5-108 MHz (50 kHz)
 - Asia Pacific/Latin America: FM 87.5-108 MHz (50/100 kHz)
- Signal-to-noise ratio: FM 50 dB
- Frequency response: FM 200 Hz-12.5 kHz / ± 6 dB

USB

- Compatibility: Hi-Speed USB (2.0)
- Class support: USB Mass Storage Class (MSC)
- File system: FAT16, FAT32, NTFS
- USB port: 5V \pm , 500mA

Main unit

- Power supply:
 - Europe/China/Russia/India: 220-240V~, 50 Hz
 - Latin America/Asia Pacific: 110-240V~, 50-60 Hz
- Power consumption: 50 W
- Standby power consumption: ≤ 0.5 W
- Dimensions (W × H × D):
360 × 58 × 325 mm
- Weight: 2.3 kg

Subwoofer

- Output power: 50 W RMS (30% THD)
- Impedance: 8 ohm
- Speaker drivers: 165 mm (6.5") woofer
- Dimensions (W × H × D):
195 × 265 × 265 mm
- Weight: 2.82 kg
- Cable length: 2.3 m

Speakers

Center speaker:

- Output power: 50 W RMS (30% THD)
- Speaker impedance: 4 ohm
- Speaker drivers: 1 × 63.5 mm (2.5") full range
- Dimensions (W × H × D):
 - **HTD3510:** 85 × 88 × 83 mm
 - **HTD3540/HTD3570:**
185 × 90 × 82 mm
- Weight:
 - **HTD3510:** 0.26 kg
 - **HTD3540/HTD3570:** 0.35 kg
- Cable length:
 - **HTD3510:** 1.2 m
 - **HTD3540/HTD3570:** 2.25 m

Front/Rear speaker:

- Output power: 4 × 50 W RMS (30% THD)
- Speaker impedance: 4 ohm
- Speaker drivers: 1 × 63.5 mm (2.5") full range

- Dimensions (W × H × D):
 - **HTD3510:** 85 × 88 × 83 mm (front/rear)
 - **HTD3540:** 85 × 159 × 80 mm (front);
240 × 1006 × 240 mm (rear)
 - **HTD3570:** 240 × 1006 × 240 mm (front/rear)
- Weight (front):
 - **HTD3510:** 0.25 kg/each
 - **HTD3540:** 0.35 kg/each
 - **HTD3570:** 2.56 kg/each
- Weight (rear):
 - **HTD3510:** 0.25 kg/each
 - **HTD3540/HTD3570:** 2.56 kg/each
- Cable length (front):
 - **HTD3510:** 2.2 m
 - **HTD3540/HTD3570:** 3.25 m
- Cable length (rear): 7.2 m

Remote control batteries

- 1 × AAA-R03-1.5 V

Laser

- Type: Semiconductor laser GaAlAs (CD)
- Wave length: 650-662 nm (DVD),
785-795 nm (CD)
- Output power: 6 mW (DVD),
7 mW (VCD/CD)
- Beam divergence: 60 degrees.

8 Troubleshooting



Warning

- Risk of electric shock. Never remove the casing of the product.

To keep the warranty valid, never try to repair the product yourself.

If you have problems using this product, check the following points before you request service. If you still have a problem, get support at www.philips.com/support.

Main unit

The buttons on the home theater do not work.

- Disconnect the home theater from the power supply for a few minutes, then reconnect.

Picture

No picture.

- Make sure that the TV is switched to the correct source for the home theater.

No picture on a TV connected through HDMI.

- Make sure that the HDMI cable is not faulty. If it is faulty, replace it with a new cable.
- Wait for 10 seconds for auto recovery, or change the HDMI video setting (see 'Picture and video settings' on page 17).

Disc does not play high-definition video.

- Make sure that the disc contains high-definition video.
- Make sure that the TV supports high-definition video.
- Use an HDMI cable to connect to the TV.

Sound

No sound from home theater speakers.

- Connect the audio cable from your home theater to your TV or other devices. However, you do not need a separate audio connection when the home theater and TV are connected through an **HDMI ARC** connection.
- Set up the audio for the connected device (see 'Set up the audio' on page 11).
- Reset your home theater to its factory settings (see 'Restore default settings' on page 18), and then switch it off and switch on again.
- On your home theater, press **SOURCE** repeatedly to select the correct audio input.

Distorted sound or echo.

- If you play audio from the TV through the home theater, make sure that the TV is muted.

Audio and video are not synchronized.

- 1) Press and hold **AUDIO SYNC**.
- 2) Press the **Navigation buttons** (left/right) within five seconds to synchronize the audio with the video.

Play

Cannot play a disc.

- Clean the disc.
- Make sure that the home theater supports the type of disc (see 'Media formats' on page 21).
- Make sure that the home theater supports the region code of the disc.
- If the disc is a DVD±RW or DVD±R disc, make sure that it is finalized.

Cannot play a DivX file.

- Make sure that the DivX file is encoded according to the 'Home Theater Profile' with the DivX encoder.
- Make sure that the DivX file is complete.

DivX subtitles do not display correctly.

- Make sure that the subtitle file name is the same as the movie file name (see 'Subtitles' on page 13).
- Select the correct character set (see 'Subtitles' on page 13).

Cannot read the contents of a USB storage device.

- Make sure that the format of the USB storage device is compatible with the home theater.
- Make sure that the file system on the USB storage device is supported by the home theater.

'input invalid' or 'x' sign appears on the TV.

- The operation is not possible.

EasyLink does not work.

- Make sure that the home theater is connected to a Philips brand EasyLink TV, and the EasyLink option is turned on (see 'Set up EasyLink (HDMI-CEC control)' on page 10).
- For TVs from different manufacturers, the HDMI CEC could be called differently. Check the TV user manual on how to enable it.

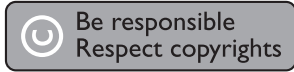
When you switch on the TV, the home theater automatically switches on.

- This behavior is normal when you are using Philips EasyLink (HDMI-CEC). To make the home theater work independently, switch off EasyLink.

9 Notice

This section contains the legal and trademark notices.

Copyright



This item incorporates copy protection technology that is protected by U.S. patents and other intellectual property rights of Rovi Corporation. Reverse engineering and disassembly are prohibited.

Trademarks



Manufactured under license from Dolby Laboratories. Dolby and the double-D symbol are trademarks of Dolby Laboratories.



DivX[®], DivX Ultra[®], DivX Certified[®] and associated logos are trademarks of Rovi Corporation or its subsidiaries and are used under license.

DivX Ultra[®] Certified to play DivX[®] video with advanced features and premium content. ABOUT DIVX VIDEO: DivX[®] is a digital video format created by DivX, LLC, a subsidiary of Rovi Corporation. This is an official DivX Certified[®] device that plays DivX video. Visit divx.com for more information and software tools to convert your files into DivX videos.

ABOUT DIVX VIDEO-ON-DEMAND: This DivX Certified[®] device must be registered in order to play purchased DivX Video-on-Demand (VOD) movies. To obtain your registration code, locate the DivX VOD section in your device setup menu. Go to vod.divx.com for more information on how to complete your registration.



The terms HDMI and HDMI High-Definition Multimedia Interface, and the HDMI Logo are trademarks or registered trademarks of HDMI Licensing LLC in the United States and other countries.



10 Language code

Abkhazian	6566	Inupiaq	7375	Pushto	8083
Afar	6565	Irish	7165	Russian	8285
Afrikaans	6570	Íslenska	7383	Quechua	8185
Amharic	6577	Italiano	7384	Raeto-Romance	8277
Arabic	6582	Ivrit	7269	Romanian	8279
Armenian	7289	Japanese	7465	Rundi	8278
Assamese	6583	Javanese	7486	Samoan	8377
Avestan	6569	Kalaallisut	7576	Sango	8371
Aymara	6589	Kannada	7578	Sanskrit	8365
Azerhijani	6590	Kashmiri	7583	Sardinian	8367
Bahasa Melayu	7783	Kazakh	7575	Serbian	8382
Bashkir	6665	Kernewek	7587	Shona	8378
Belarusian	6669	Khmer	7577	Shqip	8381
Bengali	6678	Kinyarwanda	8287	Sindhi	8368
Bihari	6672	Kirghiz	7589	Sinhalese	8373
Bislama	6673	Komi	7586	Slovensky	8373
Bokmål, Norwegian	7866	Korean	7579	Slovenian	8376
Bosanski	6683	Kuanyama; Kwanyama	7574	Somali	8379
Brezhoneg	6682	Kurdish	7585	Sotho; Southern	8384
Bulgarian	6671	Lao	7679	South Ndebele	7882
Burmese	7789	Latina	7665	Sundanese	8385
Castellano, Español	6983	Latvian	7686	Suomi	7073
Catalán	6765	Letzeburgesch;	7666	Swahili	8387
Chamorro	6772	Limburgan; Limburger	7673	Swati	8383
Chechen	6769	Lingala	7678	Svenska	8386
Chewa; Chichewa; Nyanja	7889	Lithuanian	7684	Tagalog	8476
中文	9072	Luxembourgish;	7666	Tahitian	8489
Chuang; Zhuang	9065	Macedonian	7775	Tajik	8471
Church Slavic; Slavonic	6785	Malagasy	7771	Tamil	8465
Chuvash	6786	Magyar	7285	Tatar	8484
Corsican	6779	Malayalam	7776	Telugu	8469
Česky	6783	Maltese	7784	Thai	8472
Dansk	6865	Manx	7186	Tibetan	6679
Deutsch	6869	Maori	7773	Tigrinya	8473
Dzongkha	6890	Marathi	7782	Tonga (Tonga Islands)	8479
English	6978	Marshallese	7772	Tsonga	8483
Esperanto	6979	Moldavian	7779	Tswana	8478
Estonian	6984	Mongolian	7778	Türkçe	8482
Euskara	6985	Nauru	7865	Türkmen	8475
Ελληνικά	6976	Navaho; Navajo	7886	Twí	8487
Faroese	7079	Ndebele, North	7868	Uighur	8571
Français	7082	Ndebele, South	7882	Ukrainian	8575
Frysk	7089	Ndonga	7871	Urdu	8582
Fijian	7074	Nederlands	7876	Uzbek	8590
Gaelic; Scottish Gaelic	7168	Nepali	7869	Vietnamese	8673
Gallegan	7176	Norsk	7879	Volapuk	8679
Georgian	7565	Northern Sami	8369	Walloon	8765
Gikuyu; Kikuyu	7573	North Ndebele	7868	Welsh	6789
Guarani	7178	Norwegian Nynorsk;	7878	Wolof	8779
Gujarati	7185	Occitan; Provençal	7967	Xhosa	8872
Hausa	7265	Old Bulgarian; Old Slavonic	6785	Yiddish	8973
Herero	7290	Oriya	7982	Yoruba	8979
Hindi	7273	Oromo	7977	Zulu	9085
Hiri Motu	7279	Ossetian; Ossetic	7983		
Hrwatski	6779	Pali	8073		
Ido	7379	Panjabi	8065		
Interlingua (International)	7365	Persian	7065		
Interlingue	7365	Polski	8076		
Inuktitut	7385	Português	8084		

11 Index

A		
amplifier	21	
audio		
predefined modes	16	
specifications	21	
audio options	14	
<hr/>		
C		
care		
product	3	
connectors		
front connectors	5	
control		
disc play	12	
main unit	4	
<hr/>		
D		
discs		
audio options	14	
control buttons	12	
options	14	
play	12	
synchronize picture and sound	12	
time search	14	
titles	14	
display		
VCD/SVCD menu	13	
display panel	4	
<hr/>		
F		
FM antenna	6	
<hr/>		
H		
HDMI		
<hr/>		
K		
karaoke	16	
<hr/>		
L		
language		
language code	26	
<hr/>		
M		
main unit		
overview	4	
specifications	22	
troubleshooting	23	
media formats		21
MP3		
connector	5	
<hr/>		
O		
options		
picture	14	
overview		
main unit	4	
remote control	4	
<hr/>		
P		
picture		
options	14	
troubleshooting	23	
picture options	14	
play		
discs	12	
radio	21	
troubleshooting	23	
product specifications	21	
<hr/>		
R		
radio		
FM antenna	6	
specifications	21	
tuning grid	15	
region codes	21	
remote control		
batteries	22	
overview	4	
repeat	14	

S

safety	
use of the product	2
sound	
predefined sound mode	16
surround sound	16
synchronize picture and sound	12
troubleshooting	23
sound mode	16
speakers	
specifications	22
surround sound	16
subwoofer	
specifications	22
synchronize picture and sound	12

T

time search	14
titles	14
trademarks	25
troubleshooting	
connection	23
main unit	23
picture	23
play	23
sound	23
tuning grid	15

U

USB	
format	21
USB storage device	
options	14
specifications	21

V

video	
synchronize picture and sound	12
video formats	21
video options	14

产品中有害物质的名称及含量
Names and Contents of Hazardous Substances

部件名称 Name of the parts	有害物质 Hazardous Substance					
	铅 (Pb)	汞 (Hg)	镉 (Cd)	六价铬 (Cr (VI))	多溴联苯 (PBB)	多溴二苯醚 (PBDE)
Housing 外壳	○	○	○	○	○	○
DVD loader DVD 光盒	×	○	○	○	○	○
Subwoofer 超重低音箱	×	○	○	○	○	○
Loudspeakers 喇叭单元	○	○	○	○	○	○
PWBs 电路板组件	×	○	○	○	○	○
Accessories (Remote control & cables) 附件 (遥控器, 电源线, 连接线)	×	○	○	○	○	○
Batteries in Remote Control (ZnC) 遥控器电池	×	○	○	○	○	○

本表格依据 SJ/T 11364 的规定编制。

The table is formulated according to SJ/T 11364.

○：表示该有害物质在该部件所有均质材料中的含量均在 GB/T 26572 规定的限量要求以下。

○：Indicates that this hazardous substance contained in all of the homogeneous materials for this part is below the limit requirement in GB/T 26572.

×：表示该有害物质至少在该部件的某一均质材料中的含量超出 GB/T 26572 规定的限量要求。

×：Indicates that this hazardous substance contained in at least one of the homogeneous materials used for this part is above the limit requirement in GB/T 26572.



环保使用期限 Environmental Protection Use Period

此标识指期限（十年），电子电气产品中的有害物质在正常使用的条件下不会发生外泄或突变，用户使用该电子电气产品不会对环境造成严重污染或对其人身、财产造成严重损害的期限。

This logo refers to the period (10 years) during which the hazardous substances in electronic and electrical products will not leak or mutate so that the use of these [substances] will not result in any severe environmental pollution, any bodily injury or damage to any assets.



Specifications are subject to change without notice
© 2014 Koninklijke Philips N.V. All rights reserved.
Trademarks are the property of Koninklijke Philips N.V. or their respective owners.

HTD3510/3540/3570_93_UM_V2.0

