



Short User Manual



1 Important

Safety and notice

Read and understand all instructions before you use this product. If damage is caused by failure to follow the instructions, the warranty does not apply.

Safety

Only use attachments/accessories specified by the manufacturer. Use only power supplies listed in the user manual. The product shall not be exposed to dripping or splashing. Do not place any sources of danger on the product (e.g. liquid filled objects, lighted candles). Batteries (battery pack or batteries installed) shall not be exposed to excessive heat such as sunshine, fire or the like. Danger of explosion if battery is incorrectly replaced. Replace only with the same or equivalent type. Where the plug of the Direct Plug-in Adapter is used as the disconnect device, the disconnect device shall remain readily operable.

Warning

- Never remove the casing of this product.
- Never lubricate any part of this product.
- Never place this product on other electrical equipment.
- Keep this product away from direct sunlight, naked flames or heat.
- Never look into the laser beam inside this product.
- Ensure that you always have easy access to the power cord, plug or adaptor to disconnect the product from the power.

Compliance

This apparatus includes this label:



Note

- The type plate is located on the bottom of the product.

Care of the environment

Recycling the product and the built-in battery

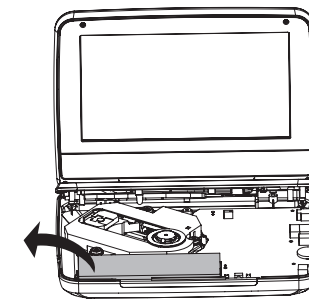
Your product is designed and manufactured with high quality materials and components, which can be recycled and reused. Never dispose of your product with other household waste. Please inform yourself about the local rules on the separate collection of electrical and electronic products and batteries. The correct disposal of these products helps prevent potentially negative consequences on the environment and human health. Please visit www.recycle.philips.com for additional information on a recycling center in your area.

Caution

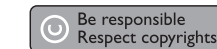
- Removal of the built-in battery invalidates the warranty and can destroy the product.

Environmental information

All unnecessary packaging has been omitted. We have tried to make the packaging easy to separate into three materials: cardboard (box), polystyrene foam (buffer) and polyethylene (bags, protective foam sheet.) Your system consists of materials which can be recycled and reused if disassembled by a specialized company. Please observe the local regulations regarding the disposal of packaging materials, and old equipment. Always bring your product to a professional to remove the built-in battery.



Copyright



This item incorporates copy protection technology that is protected by U.S. patents and other intellectual property rights of Rovi Corporation. Reverse engineering and disassembly are prohibited.

Specifications are subject to change without notice. Trademarks are the property of Koninklijke Philips Electronics N.V. or their respective owners. Philips reserves the right to change products at any time without being obliged to adjust earlier supplies accordingly.



Manufactured under license from Dolby Laboratories. Dolby and the double-D symbol are trademarks of Dolby Laboratories.

DIVX

ABOUT DIVX VIDEO: DivX® is a digital video format created by DivX, Inc, a subsidiary of Rovi Corporation. This is an official DivX Certified® device that plays DivX video. Visit divx.com for more information and software tools to convert your files into DivX videos. **ABOUT DIVX VIDEO-ON-DEMAND:** This DivX Certified® device must be registered in order to play purchased DivX Video-on-Demand (VOD) movies. To obtain your registration code, locate the DivX VOD section in your device setup menu. Go to vod.divx.com for more information on how to complete your registration.

Warranty

- Never attempt to repair the product, this could lead to the risk of injury, damage to the product and will void your warranty.
- Use the product and accessories only as intended by the manufacturer. The caution sign printed on the back of the product indicates risk of electric shock.
- Never remove the cover of the product. Always contact Philips Customer Support for service or repairs.
- Any operation expressly prohibited in this manual, or any adjustments and assembly procedures not recommended or authorized in this manual shall void the warranty.

Specifications

Main unit

- AC Power adaptor: ASUC12C-090080(Philips)
- Power supply
 - Input: 100-240V~, 50Hz/ 60Hz
 - Output: DC 9V = 0.8A
- Power consumption: 9 W
- Operating temperature range: 0 - 45 °C

Playable media

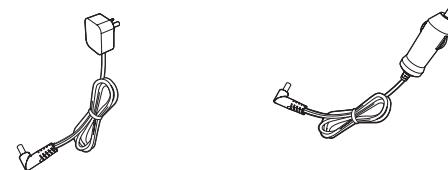
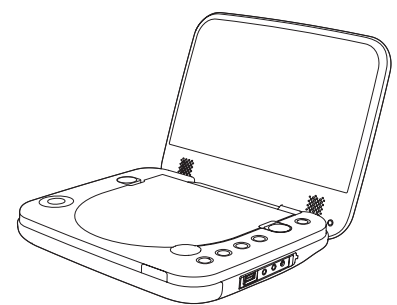
- Disc
 - DVD, DVD-Video, VCD/SVCD, Audio CD
 - DVD+R/+RW, DVD-R/-RW, DVD+R/-R DL (Dual Layer)
 - CD-R/CD-RW, MP3 media, JPEG files

File format

- Video: .avi, .divx, .mp4, .xvid
- Audio: .mp3

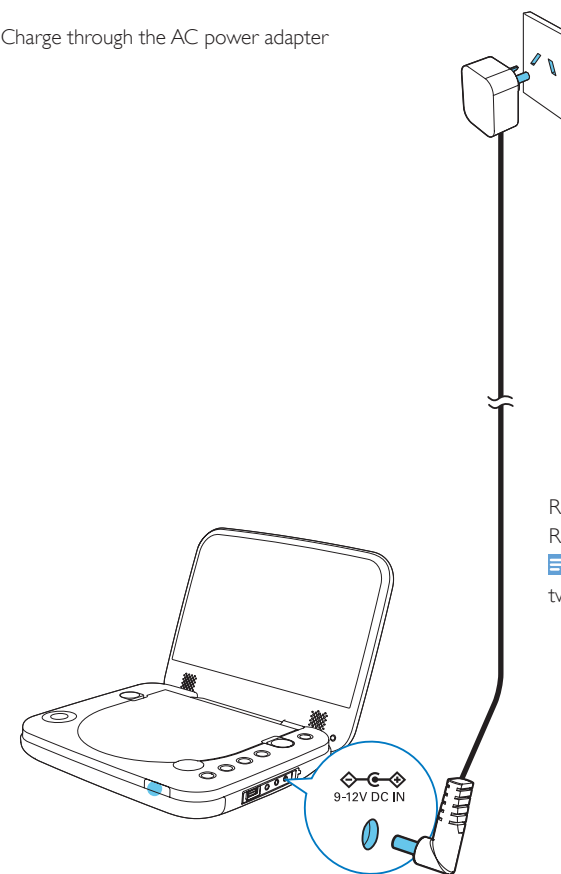
USB

- Compatibility: Hi-speed USB (2.0)
- Class support: USB Mass Storage Class (UMS)
- File system: FAT16, FAT32

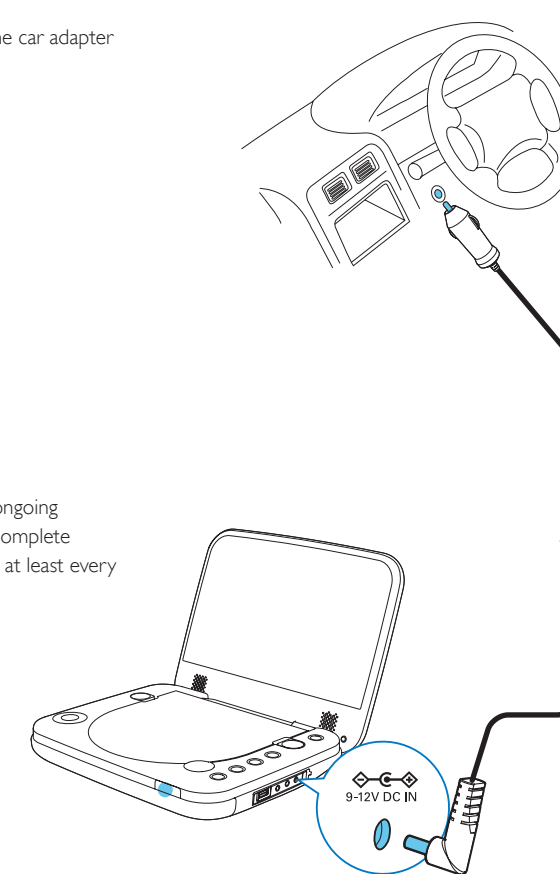


Charge

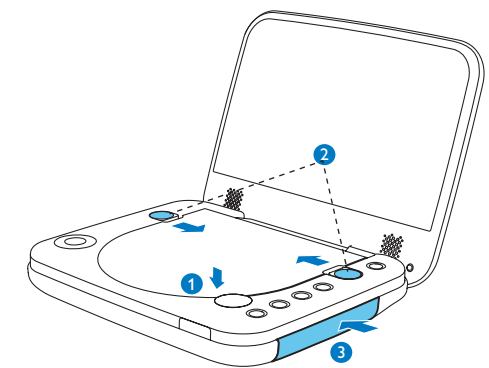
Charge through the AC power adapter



Charge through the car adapter



Red light on: Power charging ongoing
Red light off: Power charging complete
Note: Recharge the device at least every two months.

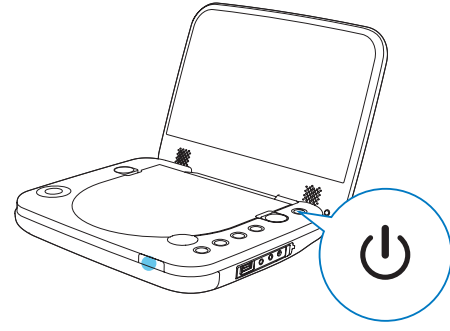


To guarantee the maximum spill-resistant result, you need to:

- 1 Close the disc compartment door.
- 2 Shut the locks.
- 3 Close the connector cover.



Switch on/off

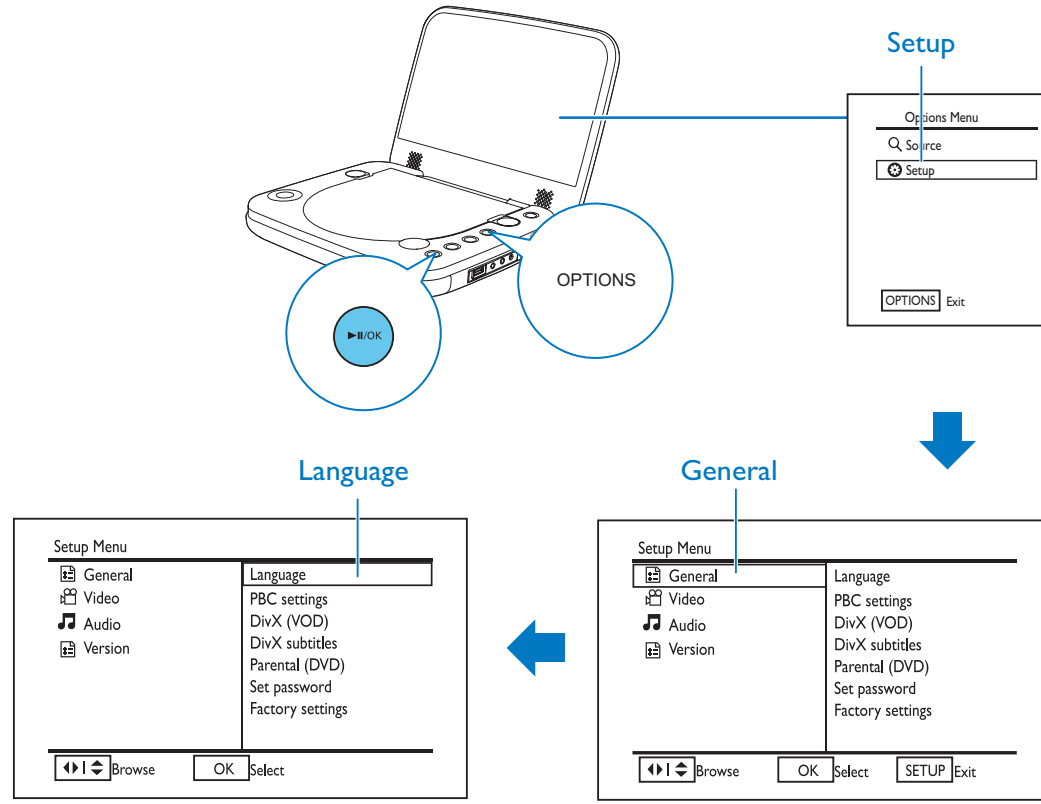


Press **⏻** to switch on, or switch off and enter the charging mode.

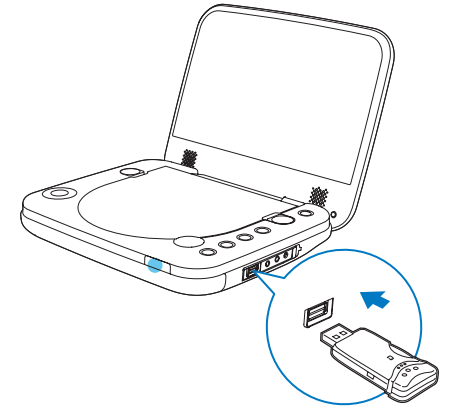
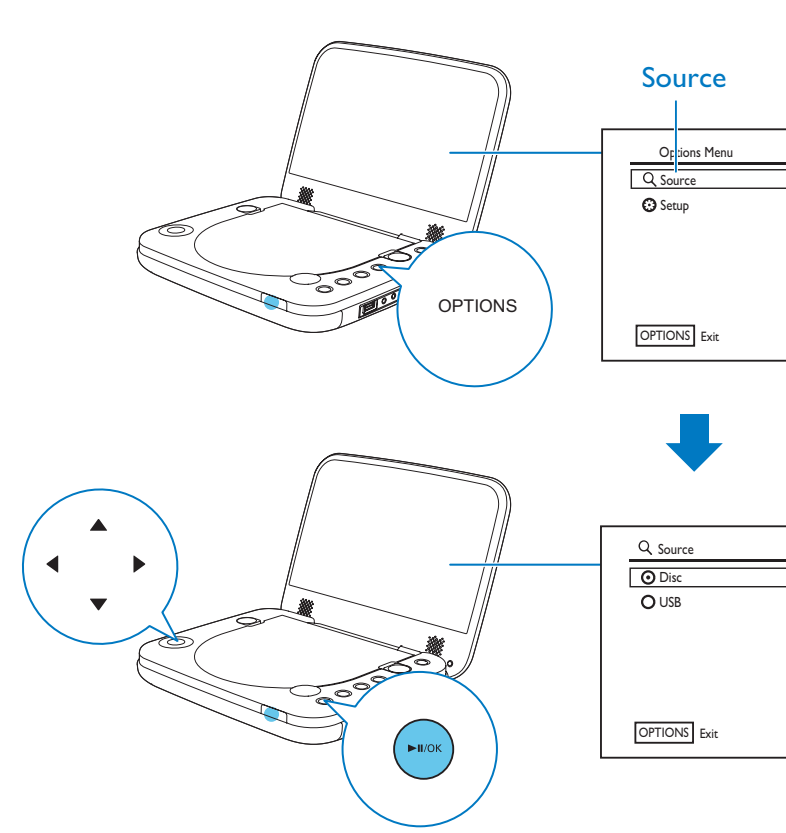


Select languages and sources

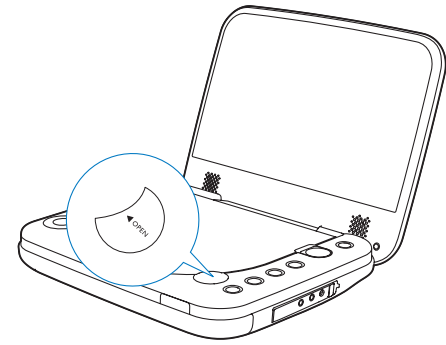
To select the language of onscreen instructions, do the following:



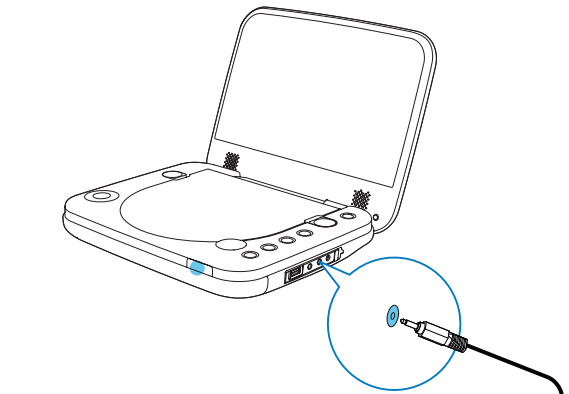
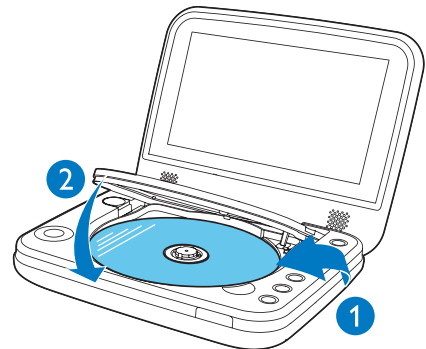
To select the disc or USB mode, press **OPTIONS** and select **[Source]**.



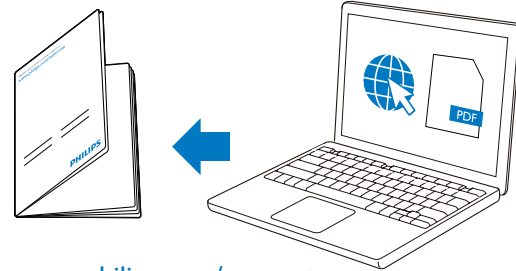
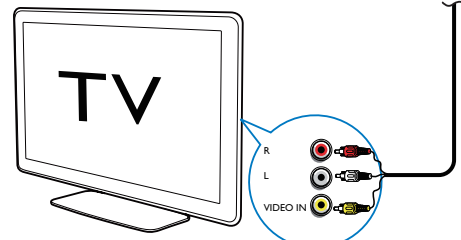
To start play in the USB mode, select a file and press **OK/▶||**



Press **OK/▶||** to start, pause, or resume play. To stop play, press **STOP** twice or switch to other modes. During play, press **OPTIONS** to show the options menu and access the Setup menu.



Connect to a TV to watch disc play on the TV screen.



www.philips.com/support

Visit www.philips.com/support to download the user manual and find troubleshooting tips.

PHILIPS

sense and simplicity

Philips Electronics Australia Limited and Philips New Zealand Limited Warranty against Defects

In this warranty:

We or us means Philips Electronics Australia Limited ACN 008 445 743 or Philips New Zealand Limited (Company Number 1723), and our contact details are set out at the end of this warranty;

You means the purchaser or the original end-user of the Goods;

Supplier means the authorised distributor or retailer of the Goods that sold you the Goods in Australia or New Zealand; and

Goods means the product or equipment which was accompanied by this warranty and purchased in Australia or New Zealand.

If you require assistance with the operation of the product, its features or specifications please call the Philips Consumer Care Centre on 1300 363 391 in Australia or 0800 658 224 in New Zealand.

Australia: Our Goods come with guarantees that cannot be excluded under the Australian Consumer Law. You are entitled to a replacement or refund for a major failure and for compensation for any other reasonably foreseeable loss or damage. You are also entitled to have the Goods repaired or replaced if the goods fail to be of acceptable quality and the failure does not amount to a major failure. This is not a complete statement of your legal rights as a consumer.

New Zealand: Our Goods come with guarantees that cannot be excluded under the Consumer Guarantees Act 1993. This guarantee applies in addition to the conditions and guarantees implied by that legislation.

Additional Warranty:

In addition to the rights and remedies that you have under the Australian Consumer Law, Consumer Guarantees Act of New Zealand or any other applicable law, we provide the following warranty against defects:

- If, during the first 12 months from their date of purchase from the Supplier (**Warranty Period**), the Goods prove defective by reason of improper workmanship or materials and none of your statutory rights or remedies apply, we will repair or replace the Goods without charge.
 - We do not have to repair or replace the Goods under this Additional Warranty if the Goods have been used for a commercial purpose; misused; improperly or inappropriately installed, operated or repaired; abused; damaged; or not maintained in accordance with the manufacturer's instructions.
 - Even when we do not have to repair or replace the Goods, we may decide to do so anyway. In some cases, we may decide to substitute the Goods with a similar alternative product of our choosing. All such decisions are at our absolute discretion.
 - All such repaired, replaced or substituted Goods continue to receive the benefit of this Additional Warranty for the time remaining on the original Warranty Period.
 - This Additional Warranty is limited to repair, replacement or substitution only. As far as the law permits, we will not be liable for any loss or damage caused to property or persons arising from any cause whatsoever.
 - In order to claim under this Additional Warranty you must telephone us on 1300 363 391 in Australia or 0800 658 224 in New Zealand within the Warranty Period. You will be asked for details of the Goods, a description of the defect and your personal details. Upon accepting your claim, we shall assist you with either returning the Goods to the Supplier for replacement or to the most convenient Philips Authorised Service Centre for your Goods to be repaired. In some cases we may require that you return to the Goods to us (at the address below) for repair, replacement or substitution.
- * All returned Goods must be accompanied by satisfactory proof of purchase which clearly indicates the name and address of the Supplier, the date and place of purchase and identifies product. It is best to provide a legible and unmodified receipt or sales invoice.
- * You must bear any expense for return of the Goods or otherwise associated with making your claim under this Additional Warranty.

7. This warranty is only valid and enforceable in Australia and New Zealand.

Contact us on the place of purchase for further details.

Philips Electronics Australia Limited
Level 2, 1 Nugent St,
North Ryde, SYDNEY NSW 2113
Consumer Care: 1300 363 391
E-mail: ps@info.australia@philips.com
Website: www.philips.com/support

Philips New Zealand Limited
Level 2, 1 Nugent St,
Grafton, AUCKLAND, 1023
Consumer Care: 0800 658 224
E-mail: ps@info.australia@philips.com
Website: www.philips.com/support