

Register your product and get support at
www.philips.com/welcome

Immersive
6000 series



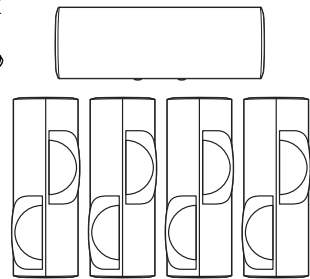
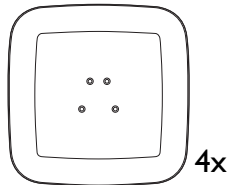
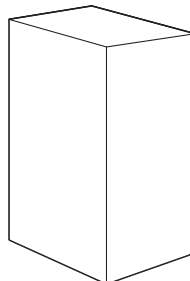
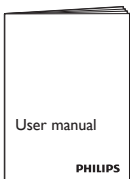
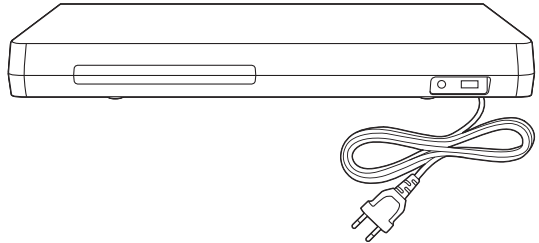
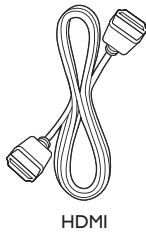
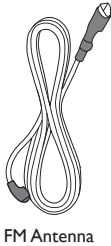
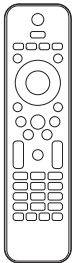
Quick start guide

PHILIPS



EN Before using your product, read all accompanying safety information

HI अपने उत्पाद का उपयोग करने के पहले, साथ वाली सभी सुरक्षा जानकारी को पढ़ें

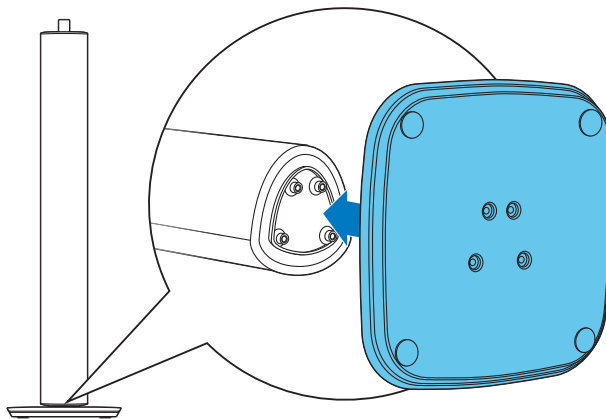


1

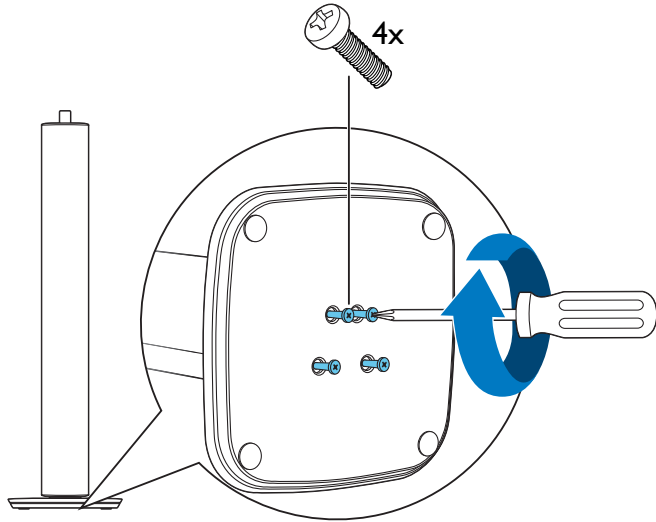
EN Stand mount the speakers

HI स्पीकर्स को खड़ा करें

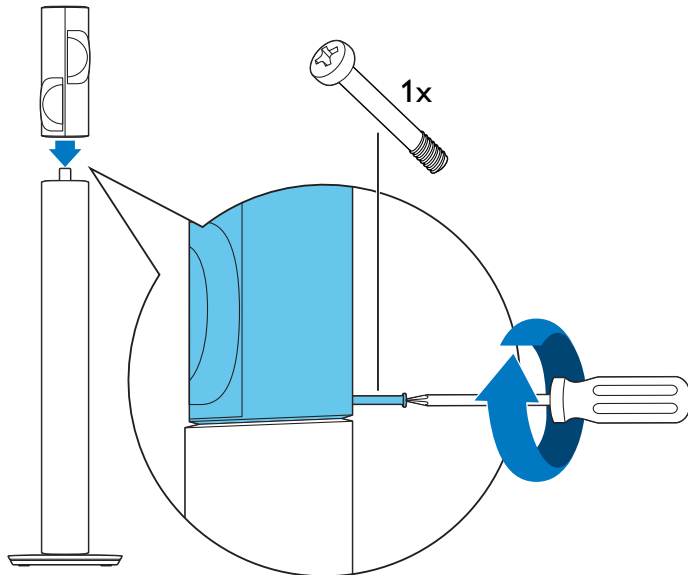
1



2



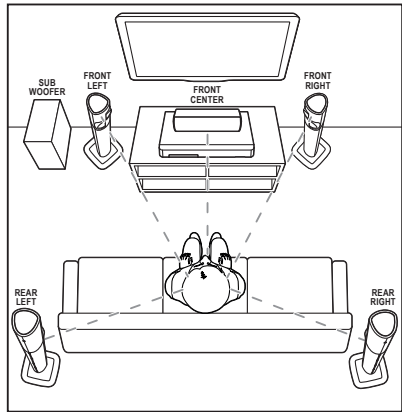
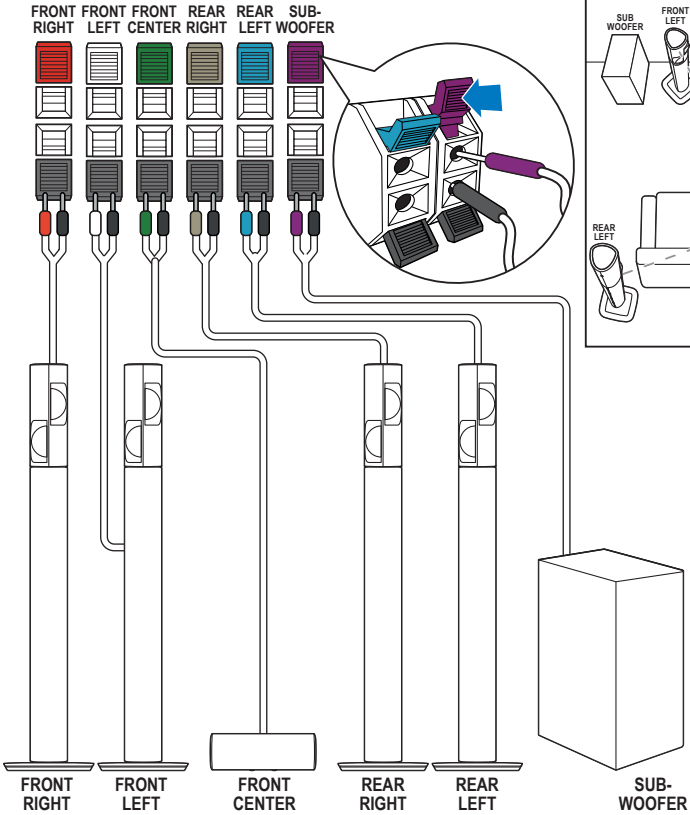
3



2

EN Connect the home theater

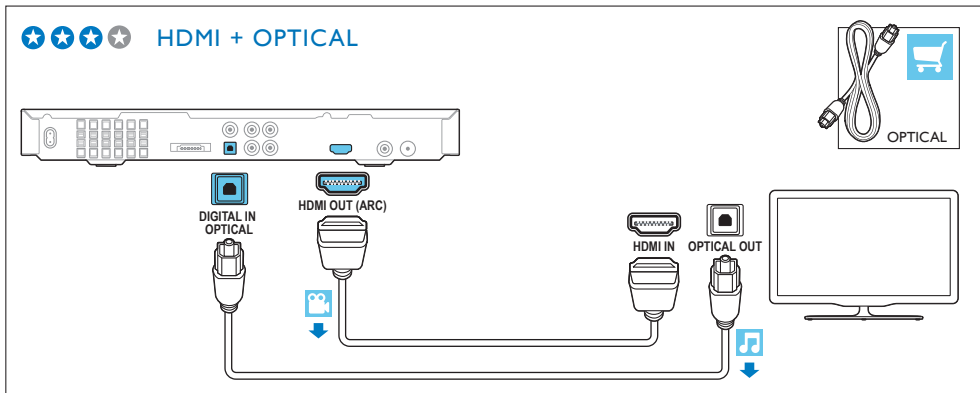
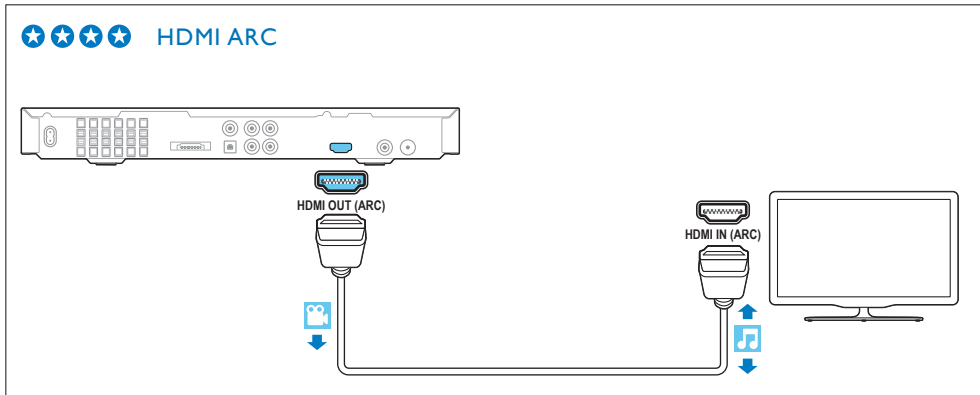
HI होम थिएटर को कनेक्ट करें



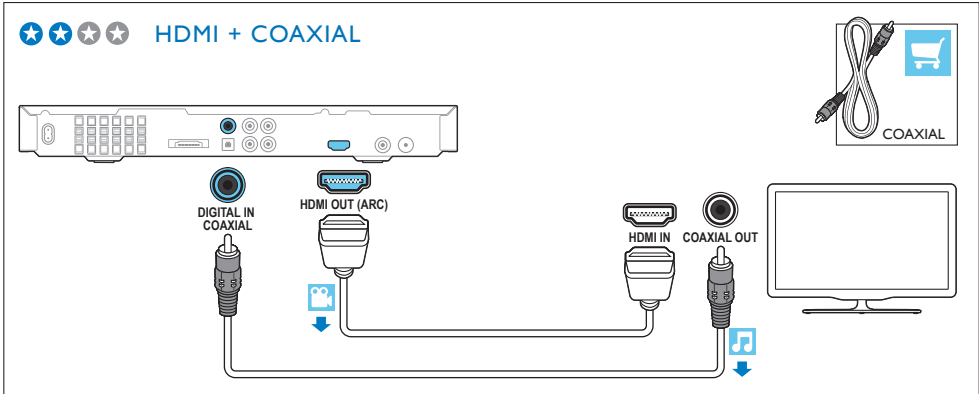
3

EN Connect to TV in one of these ways

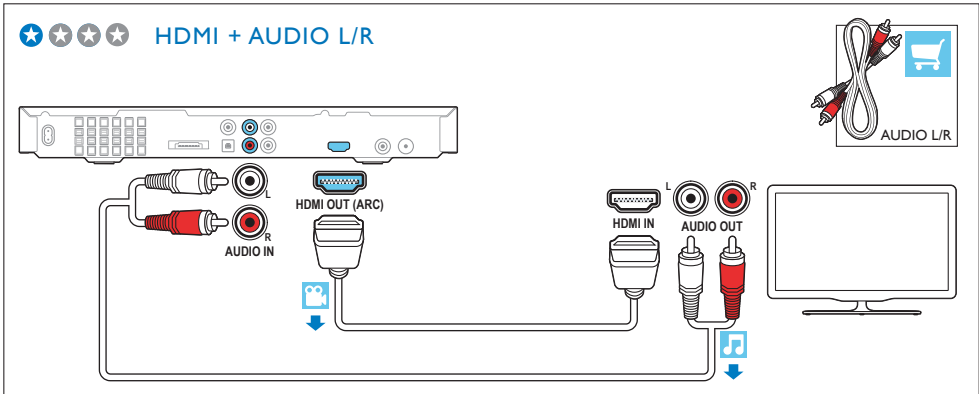
HI इन तरीकों में से एक के द्वारा TV से कनेक्ट करें



★ ★ ★ ★ HDMI + COAXIAL



★ ★ ★ ★ HDMI + AUDIO L/R

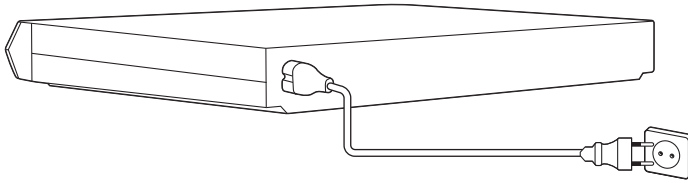


4

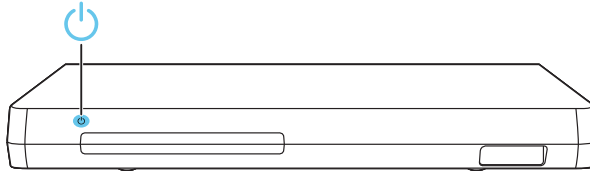
EN Switch on the home theater

HI होम थिएटर को स्विच ऑन करें

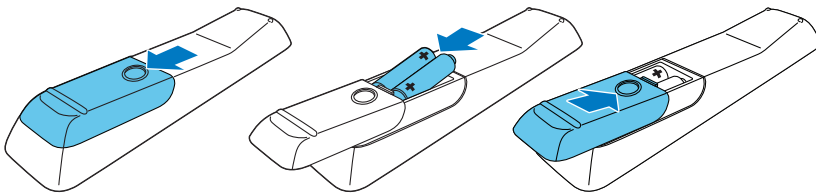
1



2



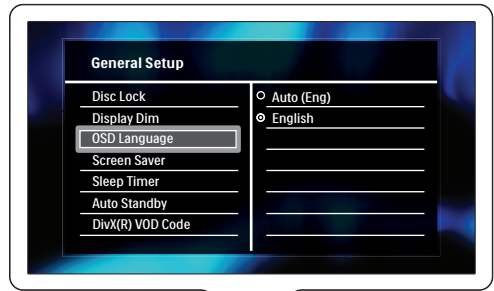
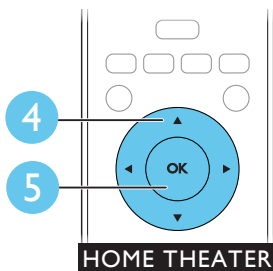
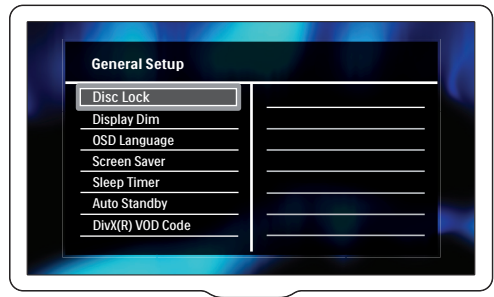
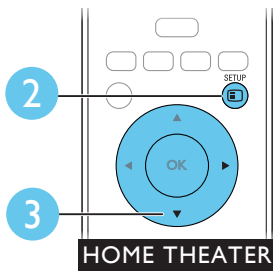
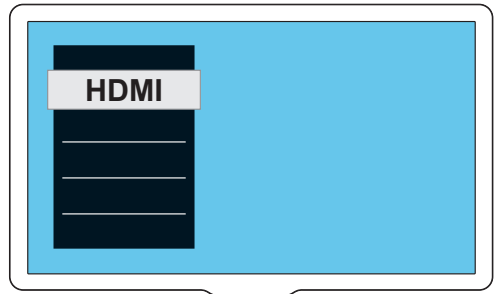
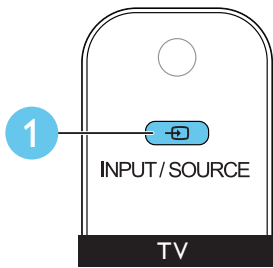
3



5

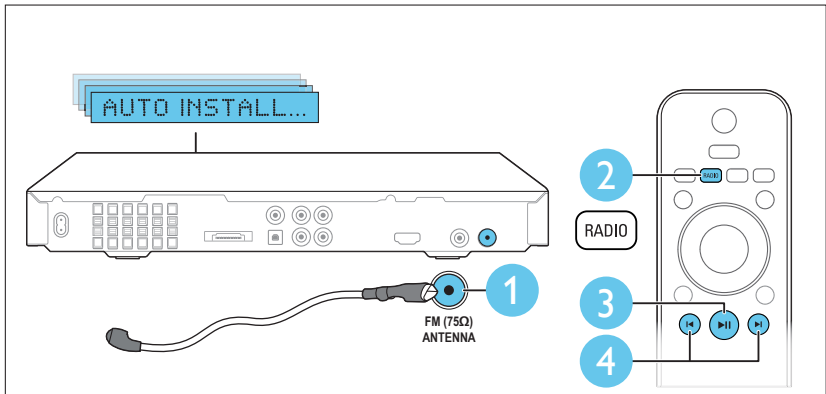
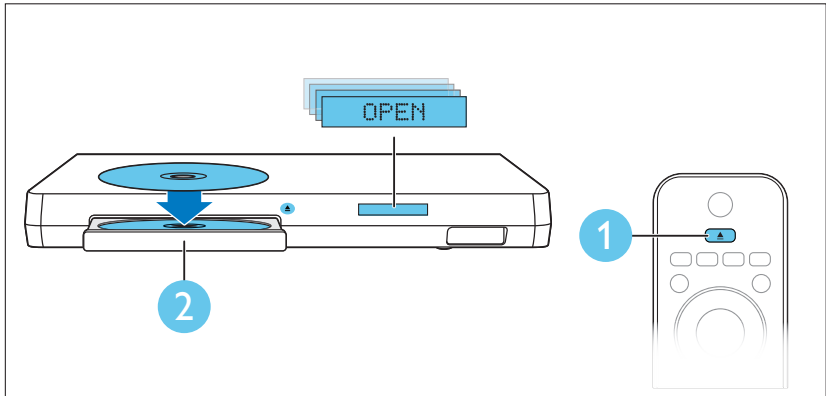
EN Complete the first time setup

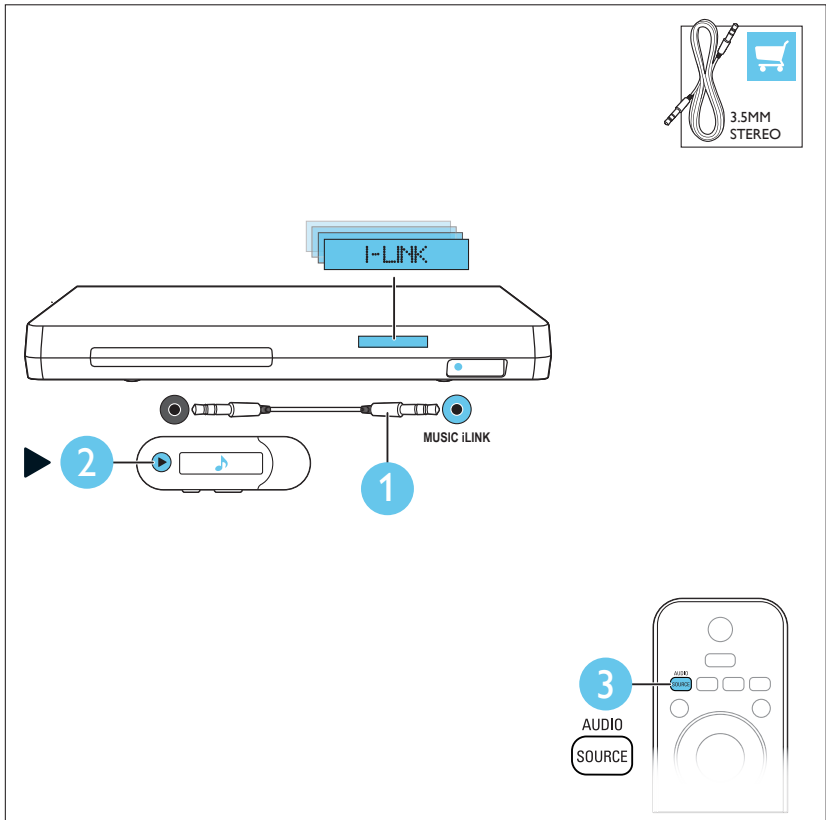
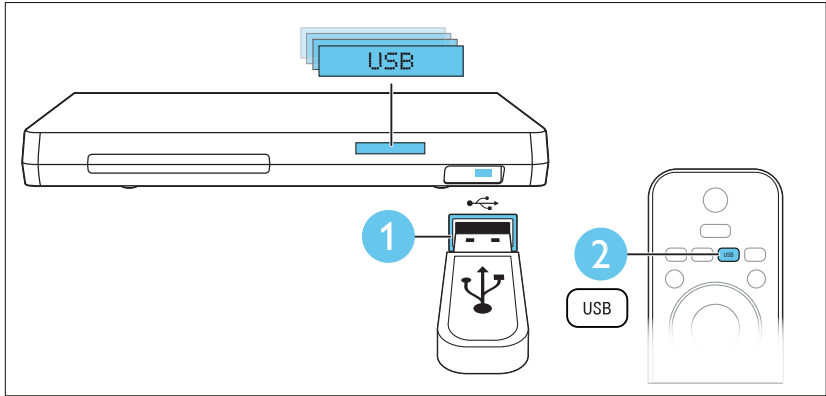
HI पहली बार के सेटअप को पूर्ण करें



6

EN Use your home theater
HI अपने होम थिएटर का उपयोग करें







EN For more information about using this product visit www.philips.com/support

HI उत्पाद के उपयोग संबंधी अधिक जानकारी के लिए www.philips.com/support पर जाएं



www.philips.com/support



Non-contractual images. / Images non contractuelles. /
Außervertragliche Bilder.

All registered and unregistered trademarks are property
of their respective owners.

Specifications are subject to change without notice
Trademarks are the property of Koninklijke Philips Electronics
N.V. or their respective owners
2012 © Koninklijke Philips Electronics N.V. All rights reserved
www.philips.com
sgsn_1151/94_v1



Be responsible
Respect copyrights

