

Always there to help you

Register your product and get support at
www.philips.com/support

AZ390W



User manual

PHILIPS

Contents

| | | |
|----------|------------------|----------|
| 1 | Important | 2 |
|----------|------------------|----------|

| | | |
|----------|---------------|----------|
| 2 | Notice | 3 |
|----------|---------------|----------|

| | | |
|----------|-----------------------------|----------|
| 3 | Your CD Soundmachine | 4 |
| | Introduction | 4 |
| | What's in the box | 4 |
| | Overview of the main unit | 5 |

| | | |
|----------|--------------------|----------|
| 4 | Get started | 6 |
| | Connect power | 6 |
| | Turn on | 7 |
| | Turn off | 7 |

| | | |
|----------|-------------------------------|----------|
| 5 | Play | 8 |
| | Play disc | 8 |
| | Play from USB device | 8 |
| | Play from an external device | 8 |
| | Listen to FM or AM (MW) radio | 9 |
| | Adjust volume | 9 |

| | | |
|----------|------------------------|----------|
| 6 | Play options | 9 |
| | Repeat or shuffle play | 9 |
| | Program tracks | 9 |

| | | |
|----------|-----------------------------|-----------|
| 7 | Product information | 10 |
| | Specifications | 10 |
| | Maintenance | 10 |
| | USB playability information | 11 |

1 Important

- Read these instructions.
- Follow all instructions.
- Do not block any ventilation openings. Install in accordance with the manufacturer's instructions.
- Do not install near any heat sources such as radiators, heat registers, stoves, or other apparatus (including amplifiers) that produce heat.
- Protect the power cord from being walked on or pinched, particularly at plugs, convenience receptacles, and the point where they exit from the unit.
- Only use attachments/accessories specified by the manufacturer.
- Unplug this unit during lightning storms or when unused for long periods of time.
- Refer all servicing to qualified service personnel. Servicing is required when the unit has been damaged in any way, such as power-supply cord or plug is damaged, liquid has been spilled or objects have fallen into the apparatus, the unit has been exposed to rain or moisture, does not operate normally, or has been dropped.
- Battery usage **CAUTION** – To prevent battery leakage which may result in bodily injury, property damage, or damage to the unit:
 - Install all batteries correctly, + and - as marked on the unit.
 - Do not mix batteries (old and new or carbon and alkaline, etc.).
 - Remove batteries when the unit is not used for a long time.
- Batteries (battery pack or batteries installed) shall not be exposed to excessive heat such as sunshine, fire or the like.
- The unit shall not be exposed to dripping or splashing.
- Do not place any sources of danger on the unit (e.g. liquid filled objects, lighted candles).

- Where the MAINS plug or an appliance coupler is used as the disconnect device, the disconnect device shall remain readily operable.



This 'bolt of lightning' indicates uninsulated material within your unit may cause an electrical shock. For the safety of everyone in your household, please do not remove product covering.

The 'exclamation point' calls attention to features for which you should read the enclosed literature closely to prevent operating and maintenance problems.

WARNING: To reduce the risk of fire or electric shock, this apparatus should not be exposed to rain or moisture and objects filled with liquids, such as vases, should not be placed on this apparatus.

CAUTION: To prevent electric shock, match wide blade of plug to wide slot, fully insert.



Warning

- Never remove the casing of this apparatus.
- Never place this apparatus on other electrical equipment.
- Ensure that you always have easy access to the power cord, plug or adaptor to disconnect the apparatus from the power.



Caution

- Use of controls or adjustments or performance of procedures other than herein may result in hazardous radiation exposure or other unsafe operation.

2 Notice

Any changes or modifications made to this device that are not expressly approved by WOOX Innovations may void the user's authority to operate the equipment.



This product complies with the radio interference requirements of the European Community.

Disposal of your old product



Your product is designed and manufactured with high quality materials and components, which can be recycled and reused.



This symbol on a product means that the product is covered by European Directive 2012/19/EU. Inform yourself about the local separate collection system for electrical and electronic products. Follow local rules and never dispose of the product with normal household waste. Correct disposal of old products helps prevent negative consequences for the environment and human health.

Environmental information

All unnecessary packaging has been omitted. We have tried to make the packaging easy to separate into three materials: cardboard (box), paper pulp (buffer) and polyethylene (bags, protective foam sheet.)

Your system consists of materials which can be recycled and reused if disassembled by a specialized company. Please observe the local regulations regarding the disposal of

packaging materials, exhausted batteries and old equipment.

This apparatus includes these labels:



Class II equipment symbol



This symbol indicates that the apparatus has a double insulation system.

Note

- The type plate is located on the bottom of the apparatus.

3 Your CD Soundmachine

Introduction

With this unit, you can:

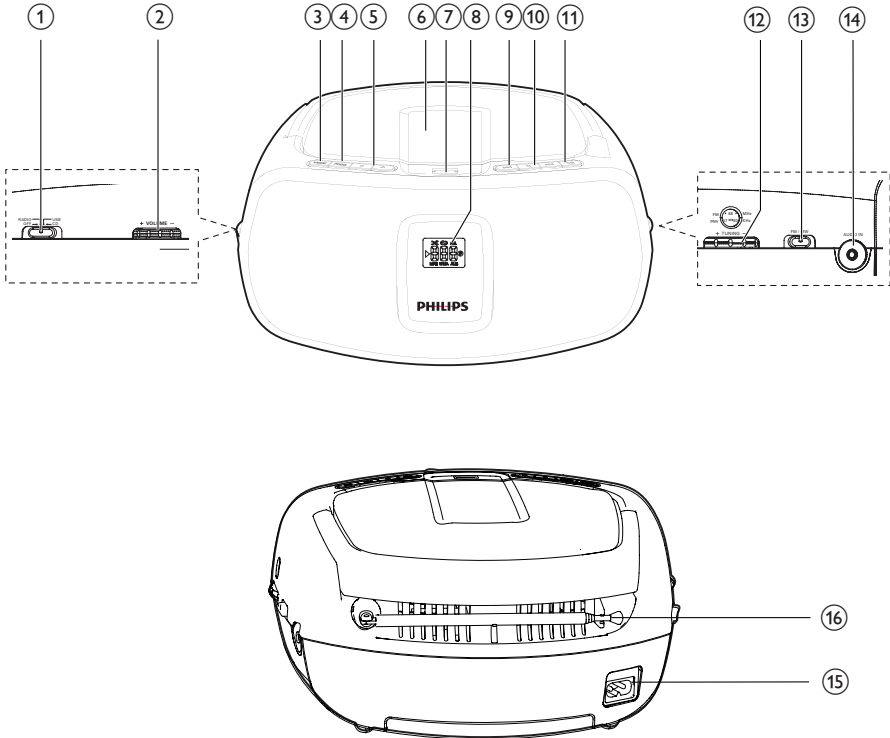
- enjoy audio from discs, USB devices, and other external devices;
- listen to FM or AM (MW) radio

What's in the box

Check and identify the contents of the package:

- Main unit
- AC power cord
- Short User Manual

Overview of the main unit



① **Source selector**

- Select a source: **CD, USB, or RADIO.**
- Turn the CD sound machine off.

② **-VOLUME +**

- Adjust volume.

③ **MODE**

- Select repeat or shuffle mode.

④ **PROG**

- Program tracks.

⑤ **▲ / ▼**

- Skip to the previous/next album.
- Select a preset radio station.

⑥ **Disc compartment**

⑦ **USB**

- Connect a USB device.

⑧ **Display panel**

⑨ **◀▶**

- Skip to the previous or next track.
- Search within a track.

⑩ **■**

- Stop play.
- Erase a program.

⑪ **▶▶**

- Start or pause play.

⑫ **TUNING**

- Tune to radio stations.

⑬ **FM/MW**

- Select FM or AM (MW) tuner.

⑭ **AUDIO IN**

- Connect an external audio device.

⑮ **AC ~**

- Connect AC power.

⑯ **Antenna**

- Improve radio reception.

4 Get started

Always follow the instructions in this chapter in sequence.

If you contact Philips, you will be asked for the model and serial number of this apparatus. The model number and serial number are on the bottom of the apparatus. Write the numbers here:

Model No. _____

Serial No. _____

Connect power

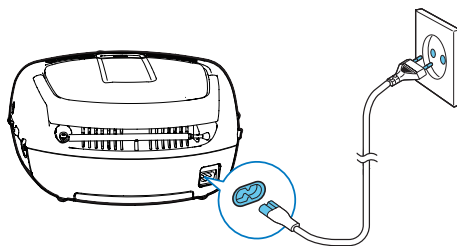
You can use either AC power or battery as power supply of this unit.

AC power

Warning

- Risk of product damage! Make sure that the power supply voltage corresponds to the voltage printed on the back or the underside of the unit.
- Risk of electric shock! When you disconnect the AC power, always pull the plug or adaptor from the socket. Never pull the cord.

- 1 Adjust the voltage selector at the bottom of the unit to correspond to the local power voltage.
- 2 Connect the AC power cord to:
 - the **AC ~** socket on the unit.
 - the wall outlet.



Battery power

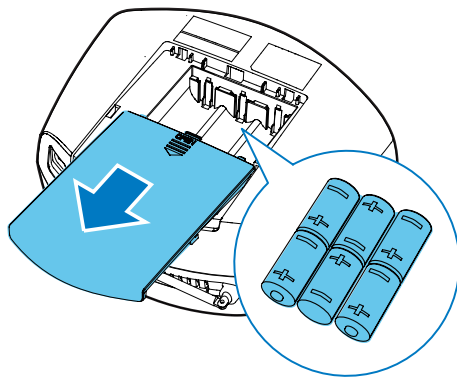
Caution

- Risk of explosion! Keep batteries away from heat, sunshine or fire. Never discard batteries in fire.
- Batteries contain chemical substances, so they should be disposed of properly.

Note

- Batteries are not supplied with the accessories.

- 1 Open the battery compartment.
- 2 Insert 6 batteries (type: R14/ UM2/ C CELL) with correct polarity (+/-) as indicated.
- 3 Close the battery compartment.



Turn on

Switch the source selector to **CD, USB, or RADIO**.

Turn off

Switch the source selector to **OFF**.

5 Play

Play disc

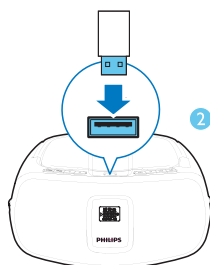
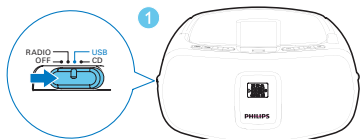
- 1 Switch the source selector to **CD**.
- 2 Lift to open the disc compartment.
- 3 Insert a disc with the printed side facing up, then close the disc compartment.
- 4 Press **▶||** to start play.
 - To pause or resume play, press **▶||**.
 - To stop play, press **■**.
 - For MP3 tracks, press **▲** / **▼** to select an album.
 - To select a track, press **◀◀** / **▶▶**.
 - To search within a track, press and hold **◀◀** / **▶▶**, then release to resume normal play.

Play from USB device

Note

- Make sure that the USB device contains playable audio content.

- 1 Switch the source selector to **USB**.

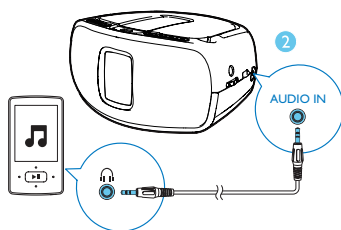
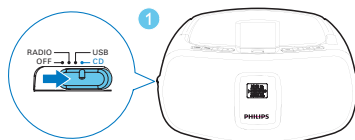


- 2 Insert the USB device into the **USB** socket.
↳ Play starts automatically. If not, press **▶||**.

Play from an external device

With this unit, you can also listen to an external audio device such as an MP3 player:

- 1 Switch the source selector to **CD, USB, or RADIO**.
- 2 Connect the audio in cable (not supplied) to:
 - the **AUDIO IN** socket on the CD sound machine.
 - the headphone socket on an external device.
- 3 Play the external device (see the device's user manual).



Note

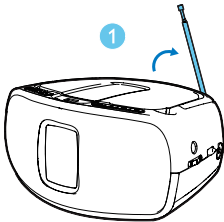
- The **AUDIO IN** socket is not for headphones.

Listen to FM or AM (MW) radio

Note

- Position the antenna as far as possible from TV, VCR or other radiation source.
- For better reception, fully extend and adjust the position of the antenna.

- 1 Switch the source selector to **RADIO**.
- 2 Adjust the **FM/MW** slider to select FM or AM (MW) tuner.
- 3 Rotate **TUNING** to tune to a radio station.






Adjust volume

During play, rotate **-VOLUME +** to adjust volume.

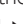
6 Play options

Repeat or shuffle play

Repeat play








- 1 During play, press **MODE** repeatedly to select:
 -  : play the current track repeatedly.
 -  : play all tracks repeatedly.
 -  : Play all tracks in the album.
- 2 To resume normal play, press **MODE** repeatedly until the repeat icons disappear.

Shuffle play

- 1 During play, press **MODE** repeatedly until the icon  is displayed.
 - ↳ All tracks are played randomly.
- 2 To resume normal play, press **MODE** again.

Program tracks

You can program a maximum of 20 tracks.

- 1 Press  to stop playback.
- 2 Press **PROG** to activate the programming mode.
 - ↳ **[P01]** is displayed.
- 3 For MP3 tracks, press  /  to select an album.
- 4 Press  /  to select a track, and then press **PROG** to confirm.
- 5 Repeat steps 3 to 4 to program more tracks.
- 6 Press  to play the programmed tracks.
 - ↳ During play, **[P]** (program) and the preset number are displayed.
 - To erase the program, when playback is stopped, press .

7 Product information

Note

- Product information is subject to change without prior notice.

Specifications

Amplifier

| | |
|---------------------------|----------------------------|
| Rated Output Power | 2 x 1W RMS |
| Frequency Response | 63 Hz - 20 kHz, ± 3 dB |
| Signal to Noise Ratio | >62 dBA |
| Total Harmonic Distortion | <1 % |
| Audio In | 650 mV |

Disc

| | |
|---------------------------|----------------------------|
| Laser type | Semiconductor |
| Disc diameter | 8/12 cm |
| Support discs | CD-DA, CD-R, CD-RW, MP3-CD |
| Audio DAC | 24 Bits, 44.1 kHz |
| Total Harmonic Distortion | <1 % |
| Frequency Response | 63Hz -20kHz, ± 3 dB |
| S/N Ratio | >62 dBA |

Tuner

| | |
|---------------------------|--------------------|
| Tuning Range | FM: 87.5 - 108 MHz |
| Sensitivity | < 22dBf |
| - FM(26dB S/N Ratio) | |
| Total Harmonic Distortion | <3% |
| Signal to Noise Ratio | FM: >55 dB |

General

| | |
|-----------------------------|---------------------------------|
| Power supply | |
| - AC Power | 220 - 240V ~, 50/60 Hz |
| - Battery | DC 9V, 6 x 1.5 V R14/UM2/C Cell |
| Operation Power Consumption | 10 W |
| Standby Power Consumption | < 0.5 W |
| Dimensions | |
| - Main Unit (W x H x D) | 243 x 124 x 199 mm |
| Weight | |
| - Main Unit | 1.0 kg |
| - With Packing | 1.5 kg |

Maintenance

Clean the cabinet

- Use a soft cloth slightly moistened with a mild detergent solution. Do not use a solution containing alcohol, spirits, ammonia or abrasives.

Clean discs

- When a disc becomes dirty, clean it with a cleaning cloth. Wipe the disc from the centre out.



- Do not use solvents such as benzene, thinner, commercially available cleaners, or antistatic spray intended for analogue records.

Clean the disc lens

- After prolonged use, dirt or dust may accumulate at the disc lens. To ensure good play quality, clean the disc lens with Philips CD lens cleaner or any commercially available cleaner. Follow the instructions supplied with cleaner.

USB playability information

Compatible USB devices:

- USB flash memory (USB1.1)
- USB flash players (USB1.1)
- memory cards (requires an additional card reader to work with this unit)

Supported formats:

- USB or memory file format: FAT12, FAT16, FAT32 (sector size: 512 bytes)
- MP3 bit rate (data rate): 32-320 Kbps and variable bit rate
- Directory nesting up to a maximum of 8 levels
- Number of albums/ folders: maximum 99
- Number of tracks/titles: maximum 999
- ID3 tag v2.0 or later
- File name in Unicode UTF8 (maximum length: 16 bytes)

Unsupported formats:

- Empty albums: an empty album is an album that does not contain MP3 files, and is not be shown in the display.
- Unsupported file formats are skipped. For example, Word documents (.doc) or MP3 files with extension .dlf are ignored and not played.
- AAC, WAV, PCM audio files
- DRM protected WMA files (.wav, .m4a, .m4p, .mp4, .aac)
- WMA files



Specifications are subject to change without notice.
2014 © WOOX Innovations Limited. All rights reserved.
Philips and the Philips' Shield Emblem are registered trademarks of
Koninklijke Philips N.V. and are used by WOOX Innovations Limited
under license from Koninklijke Philips N.V.
AZ390W_94_UM_V1.0

