

Always there to help you

Register your product and get support at
www.philips.com/support



AS130



User manual

PHILIPS

Contents

| | |
|-------------------------------|----------|
| 1 Important | 2 |
| Important Safety Instructions | 2 |

| | |
|--|----------|
| 2 Your docking speaker for Android™ | 3 |
| Introduction | 3 |
| What's in the box | 3 |
| Overview of the docking speaker | 4 |

| | |
|---------------------------|----------|
| 3 Get started | 5 |
| Turn on | 5 |
| Set time | 5 |
| Adjust display brightness | 6 |

| | |
|---|----------|
| 4 Play through Bluetooth | 6 |
| Compatible with Android™ | 6 |
| Play audio through manual Bluetooth connection | 6 |
| Play audio through auto Bluetooth connection with Philips Bluetooth Audio Connect | 7 |
| Disconnect a device | 10 |

| | |
|--|-----------|
| 5 Dock and charge Android-powered phone | 11 |
|--|-----------|

| | |
|-----------------------------------|-----------|
| 6 Play through audio cable | 12 |
|-----------------------------------|-----------|

| | |
|------------------------|-----------|
| 7 Adjust volume | 12 |
|------------------------|-----------|

| | |
|------------------------------|-----------|
| 8 Product information | 13 |
| General information | 13 |
| Bluetooth | 13 |
| Amplifier | 13 |
| Speakers | 13 |

| | |
|--------------------------|-----------|
| 9 Troubleshooting | 14 |
| General | 14 |
| About Bluetooth device | 14 |

| | |
|------------------|-----------|
| 10 Notice | 15 |
| Recycling | 15 |
| Trademark notice | 15 |

1 Important

the disconnect device shall remain readily operable.



Note

- The type plate is located on the bottom of the apparatus.

Important Safety Instructions

- Heed all warnings.
- Follow all instructions.
- Do not use this apparatus near water.
- Clean only with dry cloth.
- Do not block any ventilation openings. Install in accordance with the manufacturer's instructions.
- Do not install near any heat sources such as radiators, heat registers, stoves, or other apparatus (including amplifiers) that produce heat.
- Protect the power cord from being walked on or pinched, particularly at plugs, convenience receptacles, and the point where they exit from the apparatus.
- Only use attachments/accessories specified by the manufacturer.
- Only use power supplies listed in the user manual.
- Unplug this apparatus during lightning storms or when unused for long periods of time.
- Refer all servicing to qualified service personnel. Servicing is required when the apparatus has been damaged in any way, such as power-supply cord or plug is damaged, liquid has been spilled or objects have fallen into the apparatus, the apparatus has been exposed to rain or moisture, does not operate normally, or has been dropped.
- Apparatus shall not be exposed to dripping or splashing.
- Do not place any sources of danger on the apparatus (e.g. liquid filled objects, lighted candles).
- Where the plug of the Direct Plug-in Adaptor is used as the disconnect device,

2 Your docking speaker for Android™

Congratulations on your purchase, and welcome to Philips! To fully benefit from the support that Philips offers, register your product at www.philips.com/welcome.

Introduction

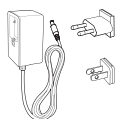
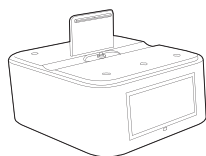
With this docking speaker, you can:

- enjoy audio through Bluetooth connection,
- enjoy audio through an audio input cable, and
- charge your Android-powered devices.

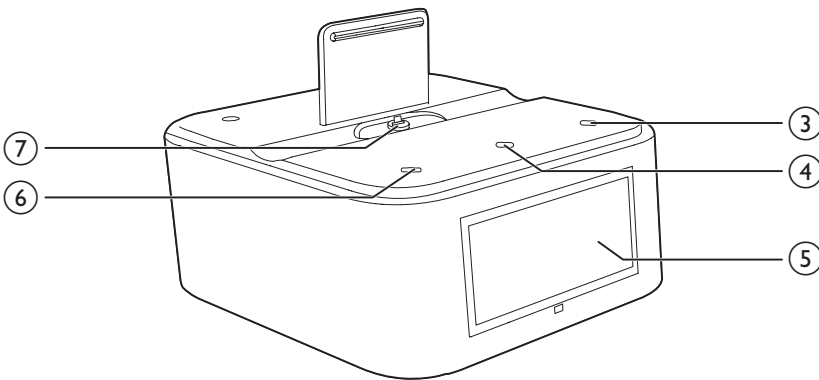
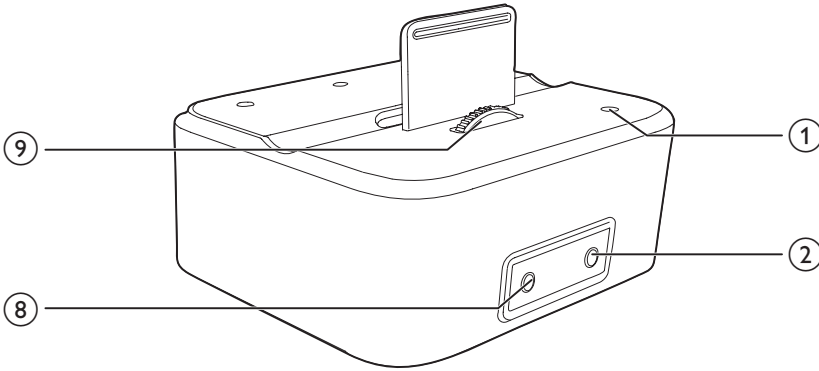
What's in the box

Check and identify the contents of your package:

- Main unit
- Power adapter (with 2 interchangeable plugs)
- Audio input cable (3.5 mm connectors)
- Short user manual



Overview of the docking speaker



① POWER

- Press to turn on the docking speaker or switch it to standby mode.

② DC IN

- Connect to the power adapter.

③ VOL/TIME +

- Increase the volume.
- Set the clock.

④ BRIGHTNESS/SET TIME

- Adjust the brightness of display.
- Press and hold to start setting the clock.

⑤ Display panel

⑥ -VOL/TIME

- Decrease the volume.
- Set the clock.

⑦ Micro USB connector

⑧ AUDIO IN

- Connect to the audio output socket (usually the headphone socket) of an external device.

⑨ Wheel

- Rotate to adjust the height of micro USB connector.

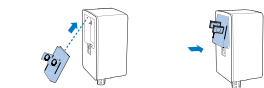
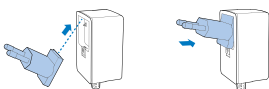
3 Get started

Always follow the instructions in this chapter in sequence.

! Caution

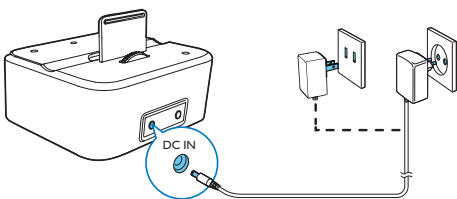
- Risk of product damage! Make sure that the power supply voltage matches the voltage printed on the bottom of the docking speaker.
- Risk of electric shock! When you unplug the AC adapter; always pull the plug from the socket. Never pull the cord.

1 Select an adapter plug and fix it to the adapter:



2 Connect the AC power adapter to

- the **DC IN** socket on the back panel,
- and
- the wall outlet.



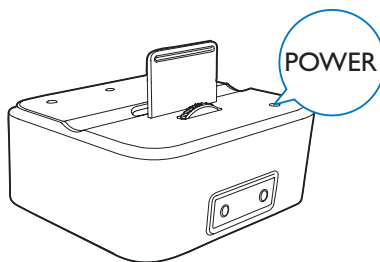
Turn on

Press **POWER** to turn on the docking speaker.

- ↳ The Bluetooth indicator blinks on the display panel.

- To switch the docking speaker to standby mode, press **POWER** again.

ON ↔ Standby



Switch to standby mode automatically

The docking speaker automatically switches to standby mode when

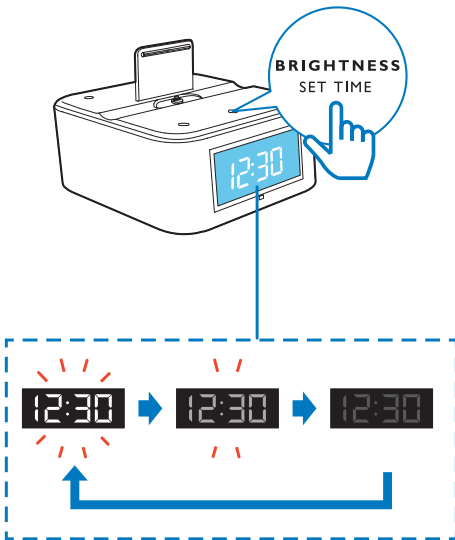
- no audio input cable is connected to the **AUDIO IN** socket, and
- the Bluetooth connection is invalid for 15 minutes.

Set time

- 1 Press and hold **BRIGHTNESS/SET TIME** for two seconds.
↳ [24H] or [12H] begins to blink.
- 2 Press **-VOL/TIME** or **VOL/TIME +** to select [24H] or [12H] for 24 or 12 hour format.
- 3 Press **BRIGHTNESS/SET TIME** to confirm.
↳ The hour and minute digits begin to blink.
- 4 Press **-VOL/TIME** or **VOL/TIME +** repeatedly to set the hour.
- 5 Press **BRIGHTNESS/SET TIME** to confirm.
↳ Minute digits begin to blink.
- 6 Press **-VOL/TIME** or **VOL/TIME +** repeatedly to set the minute.
- 7 Press **BRIGHTNESS/SET TIME** to confirm.
↳ The set time is displayed.

Adjust display brightness

Press **BRIGHTNESS/SET TIME** repeatedly to select a brightness level.



4 Play through Bluetooth

With **AS130**, you can enjoy audio in two ways:

- through manual Bluetooth connection;
- through automatic Bluetooth connection with **Philips Bluetooth Audio Connect** app.

Compatible with Android™

To make full use of your docking speaker, your Android-powered device should meet the following requirements:

- with Android operating system (Version 2.1 or above),
- with Bluetooth software (Version 2.1 or above), and
- with a micro USB connector.

For other devices with micro USB connector and Bluetooth function, you can still use the docking speaker to

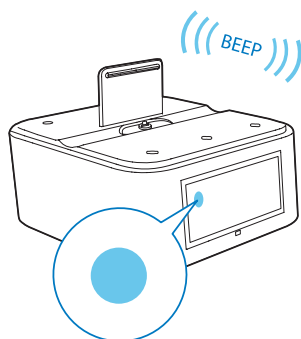
- charge your device through the USB connector; and
- enjoy audio through Bluetooth.

Play audio through manual Bluetooth connection

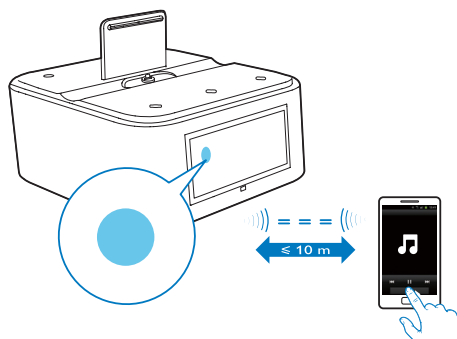
The docking speaker uses Bluetooth wireless technology to stream music from your portable device to the speaker:

Note

- Philips does not guarantee the compatibility with all Bluetooth devices.
- Before pairing a device with this docking speaker, read its user manual for Bluetooth compatibility. Make sure that the connected Bluetooth device supports the Advanced Audio Distribution Profile (A2DP) and the Audio Video Remote Control Profile (AVRCP).
- The product can memorize a maximum of 4 paired devices.
- Make sure that Bluetooth function is enabled on your device, and your device is set as visible to all other Bluetooth devices.
- The operational range between this docking speaker and a Bluetooth device is approximately 10 meters (30 feet).
- Any obstacle between this docking speaker and a Bluetooth device can reduce the operational range.
- Keep away from any other electronic device that may cause interference.

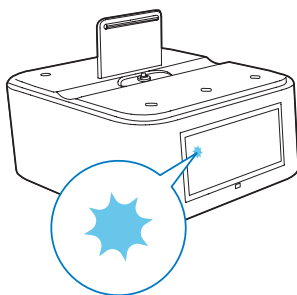


- 4 Play audio on your Bluetooth device.
↳ Audio comes out through the docking speaker.



Pair with Bluetooth devices

- 1 Press **POWER** to turn on the docking speaker.
↳ The Bluetooth indicator blinks on the display panel.



- 2 On your Android-powered devices, activate the Bluetooth feature and search for **AS130**.
- 3 In the device list, tap **PHILIPAS130**.
↳ After a successful connection, **AS130** beeps twice and the Bluetooth indicator turns steadily on.

Tip

- To clear paired devices from **AS130**, press and hold **POWER** for five seconds.

Play audio through auto Bluetooth connection with Philips Bluetooth Audio Connect

Philips Bluetooth Audio Connect establishes automatic Bluetooth connection by adding a shortcut of your docking system to the Home screen of your Android-powered device. To

enjoy the feature, you are recommended to download and install this free app.

Install Philips Bluetooth Audio Connect app

You can search **Philips Bluetooth Audio Connect** from **Google Play** directly, and then install the app.

Note

- Make sure that your Android device is connected to the Internet.
- Make sure that **Google Play** is available on your Android device.

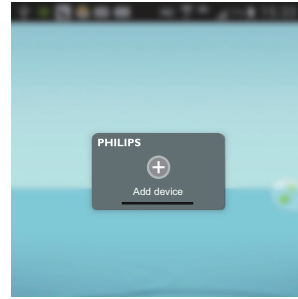
- 1 Search for **Philips Bluetooth Audio Connect** app on the Play Store of your device.
- 2 From the search result list, find and tap **Philips Bluetooth Audio Connect** to start downloading.
- 3 Follow the onscreen instructions to install the **Philips Bluetooth Audio Connect**.
- 4 When installation is complete, tap **Done**.
↳ Two **Philips Bluetooth Audio Connect** widgets are installed and saved at the widgets screen.



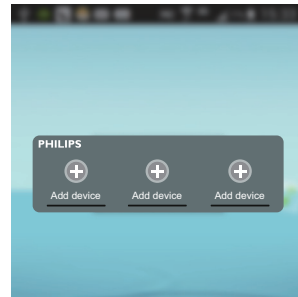
Add the Philips widget to your Home screen

Add one or both of the widgets to the Home screen of your Android device (refer to the user manual of your device).

- Philips Bluetooth Audio Connect 2 X 1: add one of your favorite Bluetooth devices



- Philips Bluetooth Audio Connect 4 X 1: add three of your favorite Bluetooth devices



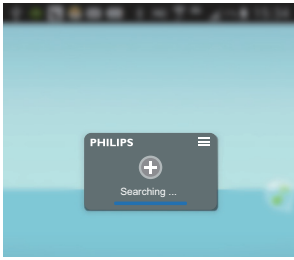
Activate Bluetooth with Philips Bluetooth Audio Connect app

Add AS130 to your Home screen

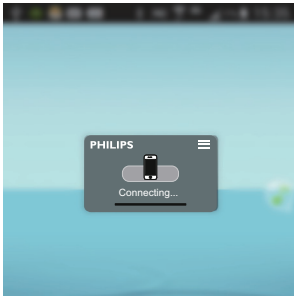
Note

- Make sure that **AS130** is switched on.

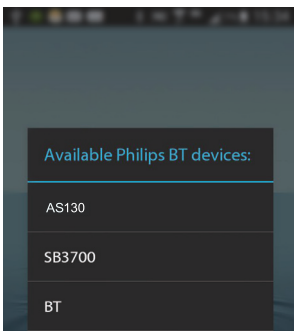
- 1 On the Home screen of your Android device, tap the widget to search and connect other Bluetooth devices.



- ↳ The widget starts to search and connect Bluetooth devices that can be paired automatically.
- ↳ The Bluetooth feature of your device is activated automatically.



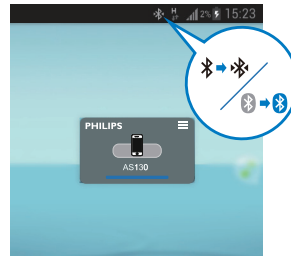
- If necessary, select **AS130** from the Available Philips BT devices list to continue the connection.




- ↳ It may take a few seconds to complete the connection.
- ↳ After a successful connection, **AS130** is added to the Home screen, a different

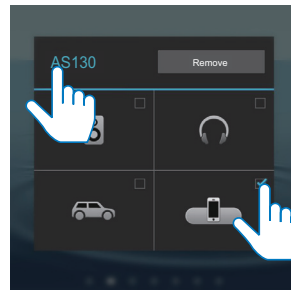
Bluetooth icon is displayed on the top of the screen.

↳ **AS130** beeps twice.



2 If necessary, tap  on the top of the widget to rename or change the icon of **AS130**.

- Tap **AS130** and input the new name.
- Tap the check box to change the icon of your device.



3 Play audio on your Android device.
↳ The audio comes out through the docking speaker.


Next-time launch

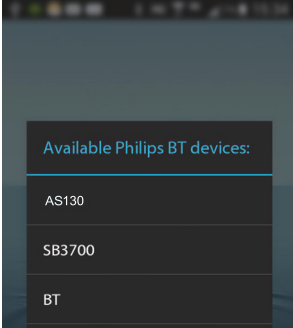
1 Next time you switch on **AS130**, the docking system connects to the last paired device automatically.

- If two or three paired devices are switched on, tap **AS130** on your Android device to pair.
- ↳ After a successful connection, a different Bluetooth icon is displayed on the top of the screen and **AS130** beeps twice.

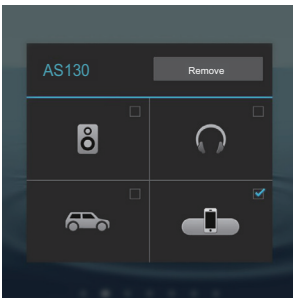
- 2 Play audio on your Android device.
↳ The audio comes out through the docking system.

Remove AS130 from Home screen

- 1 Tap  on the top of the widget.
↳ A list of Available Philips BT devices is displayed.
- 2 Select **AS130**.



- 3 Tap **Remove**.



Disconnect a device

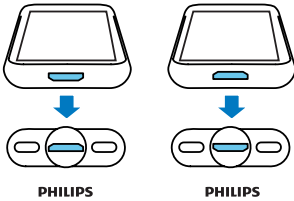
To disconnect a Bluetooth device,

- Press **SOURCE/SET** to select another source.
- Deactivate Bluetooth function on your device; or
- Move it beyond the communication range.
↳ The Bluetooth indicator turns off.

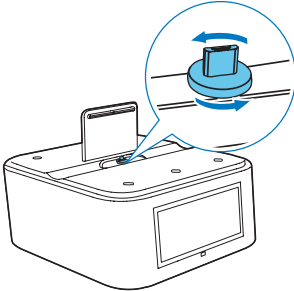
5 Dock and charge Android-powered phone

Dock your Android device to the Micro USB connector for charging.

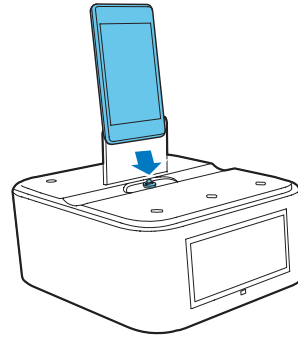
- 1 Check the orientation of the micro USB socket on your Android device.



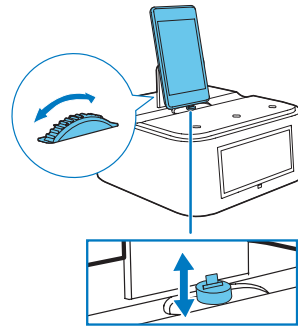
- If necessary, rotate the USB connector on the docking speaker.



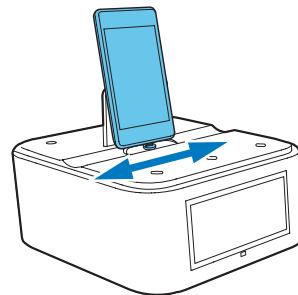
- 2 Connect your Android device to the micro USB connector.



- 3 Rotate the wheel to adjust the height of micro USB connector.



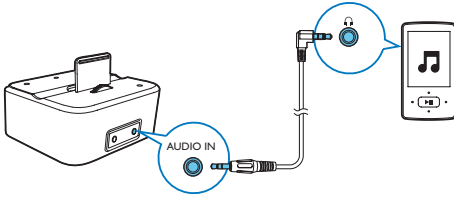
- 4 Slide the connector to place your Android device on the dock stably.



- ↳ when the docking speaker is connected to the power, your docked device starts charging automatically.

6 Play through audio cable

Through an MP3 link cable, you can also play on **AS130** from an external audio device, such as an MP3 player:



- 1 Connect an audio input cable with a 3.5 mm connector on both ends between
 - the **AUDIO IN** socket on this docking speaker; and
 - the headphone socket of an external device.
- 2 Play audio on the external device (refer to its user manual).

7 Adjust volume

Press **-VOL/TIME/VOL/TIME +** to increase or decrease the volume.

8 Product information

Note

- Product information is subject to change without prior notice.

General information

| | |
|---|--|
| AC Power | Model: AS100-050-AD200 Input: 100-240V ~, 50/60 Hz, 0.5 A Output: 5V = 2.0 A |
| Operation Power Consumption | < 15 W |
| Standby Power Consumption | < 1 W |
| Max. load of Android output | 5V = 1 A |
| Dimensions - Main Unit (W x H x D) | 137 x 98 x 141 mm |
| Weight - With Packing - Main Unit | 1.0 kg 0.56 kg |

Bluetooth

| | |
|-------------------------|--------------------|
| Bluetooth specification | V3.0 + EDR |
| Supported profiles | A2DP 1.0/AVRCP 1.0 |
| Range | 10 m (Free space) |

Amplifier

| | |
|---------------------------|---------------------|
| Rated Output Power | 2 X 2.5W RMS |
| Frequency Response | 63 - 16000 Hz, -3dB |
| Signal to Noise Ratio | > 55dB |
| Total Harmonic Distortion | < 1% |
| MP3 Link | 650mV RMS |

Speakers

| | |
|-------------------|-----------------|
| Speaker impedance | 4 Ohm |
| Speaker driver | 1.5" full range |

9 Troubleshooting



Warning

- Never remove the casing of this device.

To keep the warranty valid, never try to repair the system yourself.

If you encounter problems when using this device, check the following points before requesting service. If the problem remains unsolved, go to the Philips Web page (www.philips.com/support). When you contact Philips, make sure that the device is nearby and the model number and serial number are available.

General

No power

- Ensure that the AC power plug of the unit is connected properly.
- Ensure that there is power at the AC outlet.

No sound or poor sound

- Adjust the volume of your docking speaker and Bluetooth device.
- Make sure that the Bluetooth connection is valid between your Bluetooth device and the docking speaker.

Clock setting erased

- Power has been interrupted or the power adapter has been disconnected.
- Reset the clock.

About Bluetooth device

Music playback is unavailable on the system even after successful Bluetooth connection.

- The device cannot be used with the system to play music.

The audio quality is poor after connection with a Bluetooth-enabled device.

- The Bluetooth reception is poor: Move the device closer to the system or remove any obstacle between the device and the system.

Cannot connect with the system.

- The device does not support the profiles required for the system.
- The Bluetooth function of the device is not enabled. Refer to the user manual of the device for how to enable the function.
- The system is not in the pairing mode.
- The system is already connected with another Bluetooth-enabled device. Disconnect that device or all other connected devices and then try again.

The paired device connects and disconnects constantly.

- The Bluetooth reception is poor: Move the device closer to the system or remove any obstacle between the device and the system.
- For some devices, the Bluetooth connection may be deactivated automatically as a power-saving feature. This does not indicate any malfunction of the system.

10 Notice

Any changes or modifications made to this device that are not expressly approved by WOOX Innovations may void the user's authority to operate the equipment.

Trademark notice

The Bluetooth® word mark and logos are registered trademarks owned by Bluetooth SIG, Inc. and any use of such marks by WOOX Innovations is under license.

Recycling



Your product is designed and manufactured with high quality materials and components, which can be recycled and reused.

When you see the crossed-out wheel bin symbol attached to a product, it means the product is covered by the European Directive 2002/96/EC:



Never dispose of your product with other household waste. Please inform yourself about the local rules on the separate collection of electrical and electronic products. The correct disposal of your old product helps prevent potentially negative consequences on the environment and human health.

Environmental information

All unnecessary packaging has been omitted. We have tried to make the packaging easy to separate into three materials: cardboard (box), polystyrene foam (buffer) and polyethylene (bags, protective foam sheet.)

Your system consists of materials which can be recycled and reused if disassembled by a specialized company. Please observe the local regulations regarding the disposal of packaging materials, exhausted batteries and old equipment.



Specifications are subject to change without notice
2014 © WOOX Innovations Limited. All rights reserved.
Philips and the Philips' Shield Emblem are registered
trademarks of Koninklijke Philips N.V. and are used by WOOX
Innovations Limited under license from Koninklijke Philips N.V.

AS130_55_UM_V2.0

