

Register your product and get support at
www.philips.com/welcome

HTS8160B

HTS8161B



EN User manual

PHILIPS

Contents

1 Notice	2
Copyright	2
Compliance	2
Trademarks	2
2 Important	4
Safety	4
Product care	5
User Manual CD	6
3 Your home theater	7
Main unit	7
Remote control	8
4 Connect your home theater	10
Connectors	10
Connect to the TV, subwoofer and power	11
Connect audio from TV or other devices	12
Connect and install radio	14
Connect a USB device	15
Connect an MP3 player	15
Connect and install a Philips iPod dock	16
Connect to the internet	16
5 Use your home theater	17
Before you start	17
Switch on or to standby	17
Choose your sound	17
Play a disc	18
Play from radio	20
Play audio from TV or other devices	20
Play from a USB device	20
Play from an iPod	21
Play from an MP3 player	21
More play features	22
6 Change settings	24
Access the settings menu	24
Change video settings	24
Change audio settings	26
Change preferences	27
Set up EasyLink	28
Change advance settings	30
Change BD-Live settings	30
7 Update software	31
Check software version	31
Update software from the network	31
Update software from a USB device	31
8 Wall mount the home theater	32
9 Product specifications	33
10 Troubleshooting	35
11 Index	37

1 Notice

Copyright



Be responsible
Respect copyrights

This product incorporates copyright protection technology that is protected by method claims of certain U.S. patents and other intellectual property rights owned by Macrovision Corporation and other rights owners. Use of this copyright protection technology must be authorized by Macrovision Corporation, and is intended for home and other limited viewing uses only unless otherwise authorized by Macrovision Corporation. Reverse engineering or disassembly is prohibited.

Compliance



This product is in compliance with the essential requirements and other relevant provisions of Directives 2006/95/EC (Low Voltage), 2004/108/EC (EMC).

Trademarks

AVCHD™

'AVCHD' and 'AVCHD' logo are trademarks of Matsushita Electric Industrial Co., Ltd and Sony Corporation.



BONUSVIEW™

'BD LIVE' and 'BONUSVIEW' are trademarks of Blu-ray Disc Association.



'Blu-ray Disc' and 'Blu-ray Disc' logo are trademarks.



DivX, DivX Ultra Certified, and associated logos are trademarks of DivX, Inc. and are used under license.

Official DivX® Ultra Certified product.

Plays all versions of DivX ® video (including DivX ® 6) with enhanced playback of DivX® media files and the DivX® Media Format.

Plays DivX® video with menus, subtitles and audio tracks.



Note

- DivX® is a digital video format created by DivX, Inc. This is an official DivX Certified device that plays DivX video. Visit www.divx.com for more information and software tools to convert your files into DivX video.
- This DivX Certified ® device must be registered in order to play DivX Video-on-Demand (VOD) content. To generate the registration code, locate the DivX VOD section in your device setup menu. Go to vod.divx.com with this code to complete the registration process and learn more about DivX video.



Manufactured under license from Dolby Laboratories. Dolby, Pro Logic and the double-D symbol are trademarks of Dolby Laboratories.



'DVD Video' is a trademark of DVD Format/ Logo Licensing Corporation.



Manufactured under license under U.S. Patent #'s: 5,451,942; 5,956,674; 5,974,380; 5,978,762; 6,487,535; & other U.S. and worldwide patents issued & pending. DTS is a registered trademark and the DTS logos, Symbol, DTS-HD and DTS-HD Advanced Digital Out are trademarks of DTS, Inc. © 1996-2008 DTS, Inc. All Rights Reserved.



ENERGY STAR and the ENERGY STAR mark are registered U.S. marks.



HDMI, and HDMI logo and High-Definition Multimedia Interface are trademarks or registered trademarks of HDMI licensing LLC.



Java and all other Java trademarks and logos are trademarks or registered trademarks of Sun Microsystems, Inc. in the United States and/or other countries.



iPod is a trademark of Apple Inc., registered in the U.S. and other countries.

"Made for iPod" means that an electronic accessory has been designed to connect specifically to iPod and has been certified by the developer to meet Apple performance standards.

Apple is not responsible for the operation of this device or its compliance with safety and regulatory standards.



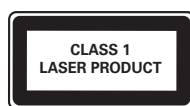
The USB-IF Logos are trademarks of Universal Serial Bus Implementers Forum, inc.



Windows Media and the Windows logo are trademarks, or registered trademarks of Microsoft Corporation in the United States and/or other countries.

x.v.Colour

'x.v.Colour' is a trademark of Sony Corporation.



2 Important

Read and understand all instructions before you use your home theater. If damage is caused by failure to follow instructions, the warranty does not apply.

Safety

Risk of electric shock or fire!

- Never expose the product to rain or water. Never place liquid containers, such as vases, near the home theater. If liquids are spilt on or into the home theater, disconnect it from the power outlet immediately. Contact Philips Consumer Care to have the home theater checked before use.
- Never place the home theater, remote control or batteries near naked flames or other heat sources, including direct sunlight.
- Never insert objects into the ventilation slots or other openings on the home theater.
- If the home theater is moved, ensure that no strain is exerted on the power cord. Strain on the power cord can loosen connections and cause arcing.
- To easily disconnect the home theater power cord from the power outlet, ensure that you have full access to the power cord at all times.
- Where the mains plug or an appliance coupler is used as the disconnect device, the disconnect device shall remain readily operable.
- Disconnect the home theater from the power outlet before lightning storms. Keep away from the home theater during lightning storms. Never touch any part of the product or its power cord.
- When you disconnect the power cord, always pull the plug, never the cable.

Risk of short circuit or fire!

- Never expose the remote control or batteries to rain, water or excessive heat.
- Avoid force coming onto power plugs. Loose power plugs can cause arcing or fire.
- Before you connect the home theater to the power outlet, ensure that the power voltage matches the value printed on the back or rear of the product. Never connect the home theater to the power outlet if the voltage is different.

Risk of injury or damage to the home theater!

- When wall mounting the home theater, use only the supplied wall mount bracket. Secure the wall mount to a wall that can support the combined weight of the home theater and the wall mount. Koninklijke Philips Electronics N.V. bears no responsibility for improper wall mounting that results in accident, injury or damage.
- Never place the home theater or any objects on power cords or on other electrical equipment.
- If the home theater is transported in temperatures below 5°C, unpack the product and wait until its temperature matches room temperature before connecting it to the power outlet.
- Visible and invisible laser radiation when open. Avoid exposure to beam.
- Do not place any objects other than discs into the disc compartment.
- Do not touch the disc optical lens inside the disc compartment.

Risk of injury to children!

Follow these precautions to prevent the home theater from toppling over and causing injury to children:

- Never place the home theater on a surface covered by a cloth or other material that can be pulled away.
- Ensure that no part of the home theater hangs over the edge of the surface.
- Never place the home theater on tall furniture (such as a bookcase) without anchoring both the furniture and home theater to the wall or on a suitable support.
- Place the home theater where it cannot be pushed, pulled over or knocked down.
- Educate children about the dangers of climbing on furniture to reach the home theater.

Risk of overheating!

- Never install this home theater in a confined space. Always leave a space of at least four inches around the home theater for ventilation. Ensure curtains or other objects never cover the ventilation slots on the home theater.

Risk of hearing damage!

- Avoid using earphones or headphones at high volumes or for prolonged periods of time.

Risk of contamination!

- Do not mix batteries (old and new or carbon and alkaline, etc.).
- Remove batteries if they are exhausted or if the remote control is not to be used for a long time.
- Batteries contain chemical substances, they should be disposed of properly.

Product care

- Do not insert any objects other than discs into the disc compartment.
- Do not insert warped or cracked discs into the disc compartment.
- Remove discs from the disc compartment if you are not using the product for an extended period of time.
- Only use microfiber cloth to clean the product.
- Avoid touching the surface of the disc where data is stored.
- Avoid leaving fingerprints or scratches on the disc surface.
- Do not use ball-point pens or pencils to write on the disc.
- Do not store the disc under direct sunlight.
- When wiping the disc with an appropriate cloth, always wipe in a straight line from the center to the edge of the disc.
- Do not use chemicals such as benzene, thinner or anti-static sprays on the disc.
- Do not apply labels or stickers on the disc.

Disposal of your old product and batteries



Your product is designed and manufactured with high quality materials and components, which can be recycled and reused.



When this crossed-out wheeled bin symbol is attached to a product it means that the product is covered by the European Directive 2002/96/EC. Please inform yourself about the local separate collection system for electrical and electronic products.

Please act according to your local rules and do not dispose of your old products with your normal household waste.

Correct disposal of your old product helps to prevent potential negative consequences for the environment and human health.



Your product contains batteries covered by the European Directive 2006/66/EC, which cannot be disposed with normal household waste.

Please inform yourself about the local rules on separate collection of batteries because correct disposal helps to prevent negative consequences for the environmental and human health.

User Manual CD

To read the complete User Manual, which includes information on advanced features, use the CD supplied with your home theater. For a printed copy of the complete User Manual, contact Philips Consumer Care in your country.

To access the User Manual



Caution

- The User Manual CD is for PC or Mac only. Do not insert the User Manual CD into the disc compartment of the home theater.

Requirements:

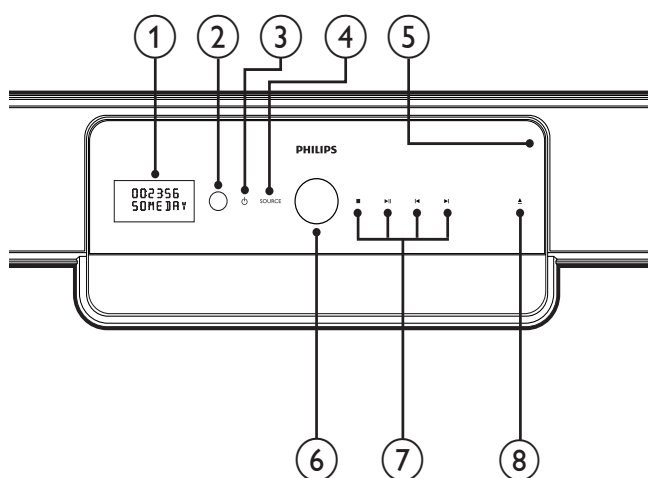
- A PC (Microsoft Windows compatible) or Mac (OS X) with CD-ROM
- Adobe Reader

- 1** Insert the User Manual CD into the CD-ROM tray.
- 2** Close the CD-ROM tray.
 - ↳ The User Manual screen appears. If the User Manual screen does not appear, skip Step 3 and navigate to the 'pdf' folder in the CD-ROM, double-clicking the PDF of your choice.
- 3** Click a User Manual language.
 - ↳ Acrobat Reader launches, displaying the complete User Manual in the language of your choice.

3 Your home theater

Congratulations on your purchase, and welcome to Philips! To fully benefit from the support that Philips offers, register your home theater at www.philips.com/welcome.

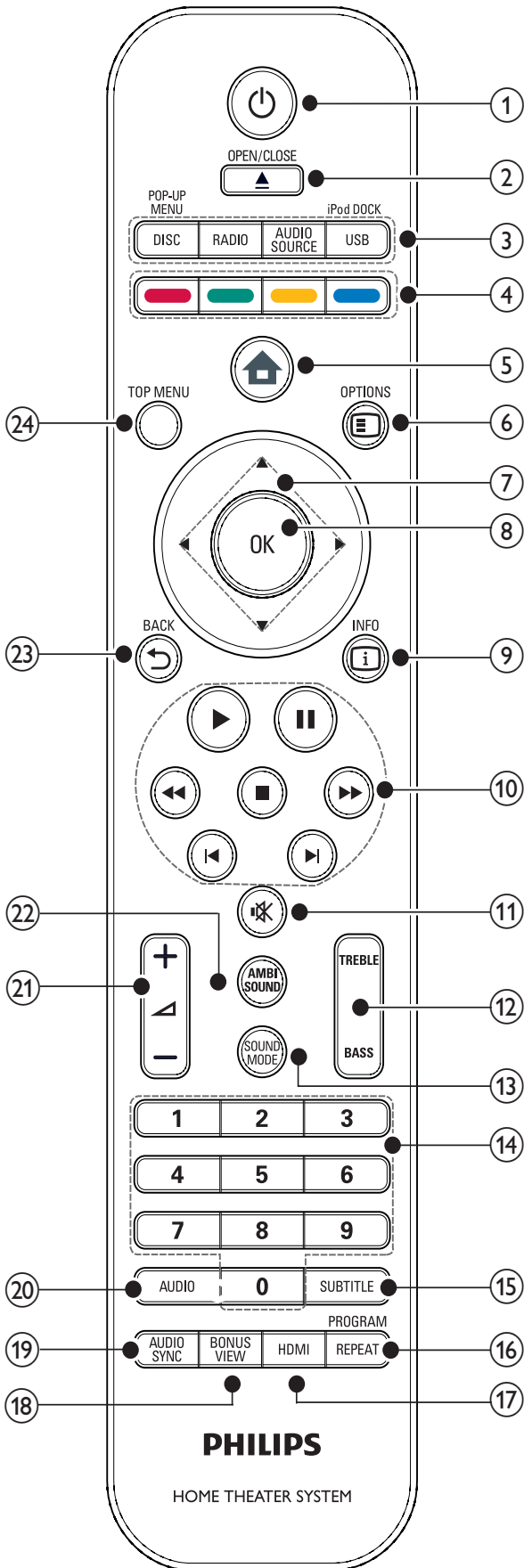
Main unit






- ④ **SOURCE**
Select an audio source for the home theater.
- ⑤ **Disc compartment**
- ⑥ **Volume control wheel**
Rotate clockwise to increase volume or anti-clockwise to decrease volume.
- ⑦ **Playback buttons**
Control playback.
- ⑧ **▲ (Open/Close)**
Open or close the disc compartment.

- ① **Display panel**
Display the current status of the home theater or disc information.
- ② **IR sensor**
Detect signals from the remote control. Point the remote control directly at the sensor.
- ③ **⏻ (Standby-On/Power indicator)**
 - Switch the home theater on (power indicator turns white).
 - Switch the home theater to standby (power indicator turns red).

Remote control



- 1 **⏻ (Standby-On)**
 - Turn on or switch the home theater to standby mode.
 - When EasyLink is enabled, press and hold for at least three seconds to turn all connected HDMI CEC compliant devices to standby.
- 2 **⏮ (Open/Close)**
Open or close the disc compartment.
- 3 **Source buttons**
 - **DISC / POP-UP MENU:** Switch to disc source. Access the disc menu of a DVD disc or the pop-up menu of a Blu-ray disc.
 - **RADIO:** Switch to FM radio.
 - **AUDIO SOURCE:** Select an audio input.
 - **USB / iPod DOCK:** Select Philips iPod Dock or a USB storage device.
- 4 **Color buttons**
Blu-ray discs only: Select a task or option.
- 5 **🏠 (Home menu)**
Access the home menu.
- 6 **⌂ OPTIONS**
Access options for the current activity or selection.
- 7 **⬆⬇⬆ (Navigation buttons)**
Navigate menus.
- 8 **OK**
Confirm an entry or selection.
- 9 **ℹ INFO**
Display information about what is playing.
- 10 **Playback buttons**
Control playback.
- 11 **🔇 (Mute)**
Mute or restore audio output.
- 12 **TREBLE/BASS**
Change treble or bass. Use with \triangle +/-.

- ⑬ **SOUND MODE**
Select a sound mode.
- ⑭ **Numeric buttons**
Select an item or setting.
- ⑮ **SUBTITLE**
Select a subtitle language for video.
- ⑯ **REPEAT / PROGRAM**
 - Select or turn off repeat mode.
 - In radio mode, program radio stations.
- ⑰ **HDMI**
Select the video resolution of HDMI output from the home theater.
- ⑱ **BONUS VIEW**
Blu-ray discs only: Enable or disable the Bonus View/Picture-In-Picture feature.
- ⑲ **AUDIO SYNC**
Synchronize audio with video. Use with  +/-.
- ⑳ **AUDIO**
 - In video mode, toggle between audio languages.
 - In radio mode, toggle between stereo and mono.
- ㉑  +/- (**Volume +/-**)
Increase or decrease volume.
- ㉒ **AMBISOUND**
Select an Ambisound mode.
- ㉓  **BACK**
Return to a previous menu screen.
- ㉔ **TOP MENU**
Access the main menu of a Blu-ray or the title menu of a DVD disc.

4 Connect your home theater

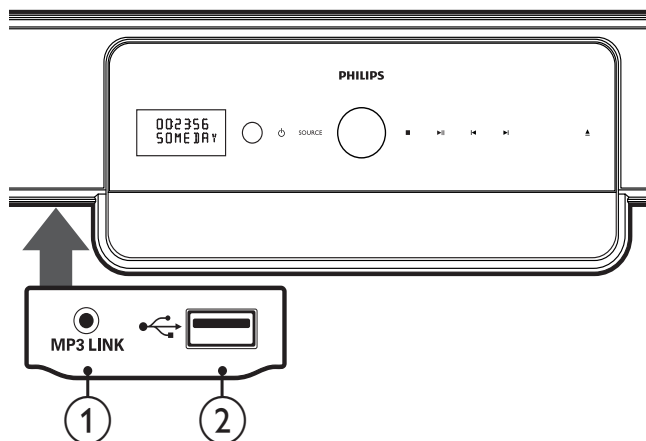
This section helps you connect your home theater to a TV and other devices. It supplements examples provided in the Quick Start. For a comprehensive interactive guide, see www.connectivityguide.philips.com.

Note

- Refer to the type plate at the back or bottom of the product for identification and supply ratings.
- Before you make or change any connections, ensure that all devices are disconnected from the power outlet.

Connectors

Front connectors

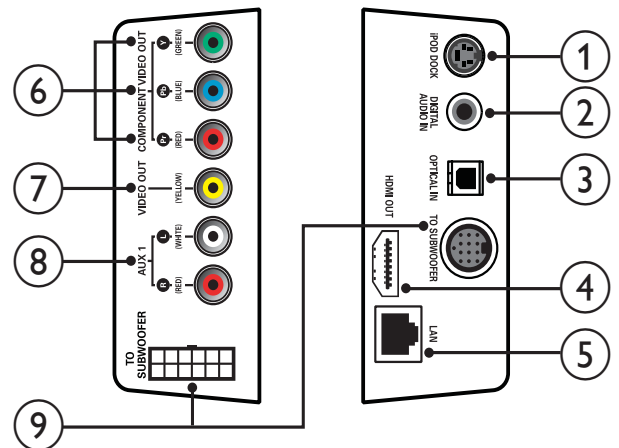


Note

- Press the catch on the left of the panel to access the front connectors.

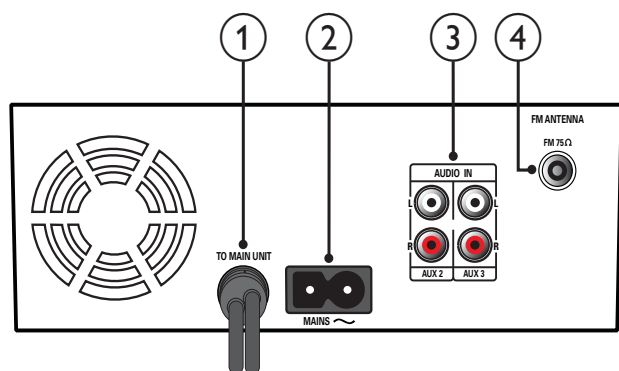
- MP3 LINK**
Audio input from an MP3 player.
- USB**
Audio, video or picture input from a USB device.

Back connectors



- iPod DOCK**
Connect to Philips iPod dock.
- DIGITAL AUDIO IN**
Connect to digital audio output on the TV.
- OPTICAL IN**
Connect to optical audio output on the TV.
- HDMI OUT**
Connect to HDMI input on the TV.
- LAN**
Connect to internet. Use for software upgrade and BD-Live.
- COMPONENT VIDEO OUT**
Connect to component video input on the TV.
- VIDEO OUT (CVBS)**
Connect to video input on the TV.
- AUX 1**
Connect to analog audio output on the TV.
- TO SUBWOOFER**
Connect to audio output on the subwoofer speakers.

Subwoofer connectors



- ① **TO MAIN UNIT**
Connect to the **TO SUBWOOFER** connector on the main unit.
- ② **MAINS**
Connect to the power supply.
- ③ **AUDIO IN AUX 2/AUX 3**
Connect to analog audio output on an analog device.
- ④ **FM ANTENNA FM 75Ω**
Connect for FM radio signal.

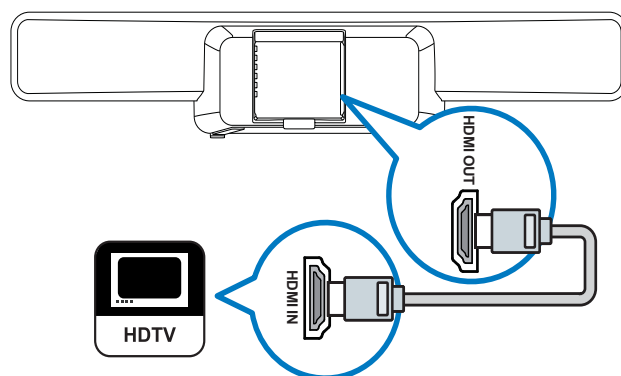
Connect to the TV, subwoofer and power

Connect to the TV

Connect your home theater directly to a TV through one of the following connectors (from highest quality to basic quality):

- ① **HDMI**
- ② **Component video (Y Pb Pr) (not supplied)**
- ③ **Composite video (CVBS) (not supplied)**

Option 1: Connect to the TV through HDMI



Note

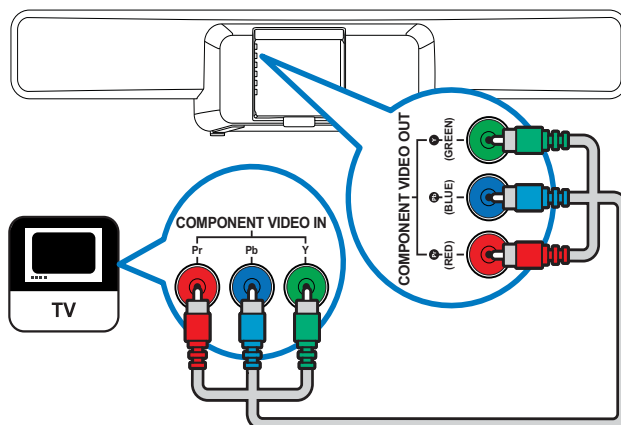
- If your HDTV has a DVI connector, connect using an HDMI/DVI adaptor.
- If your TV supports EasyLink HDMI CEC, control the home theater and TV with one remote control (see 'Set up EasyLink' on page 28).

Option 2: Connect to the TV through YPbPr (component video)

Note

- The component video cable or connector might be labeled **Y Cb Cr** or **YUV**.

(Cable not supplied)

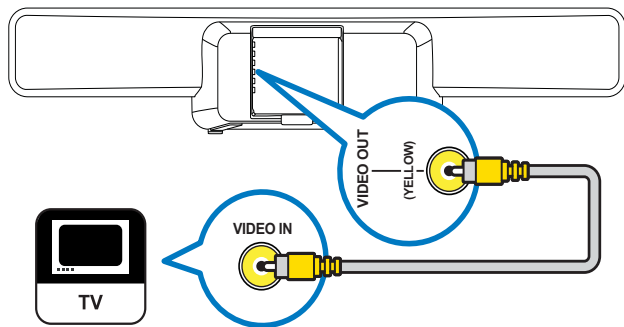


Option 3: Connect to the TV through composite video (CVBS)

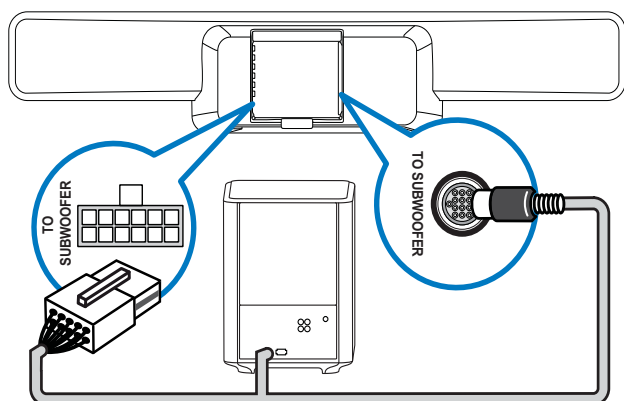
Note

- The composite video cable or connector might be labeled **AV IN**, **VIDEO IN**, **COMPOSITE** or **BASEBAND**.

(Cable not supplied)



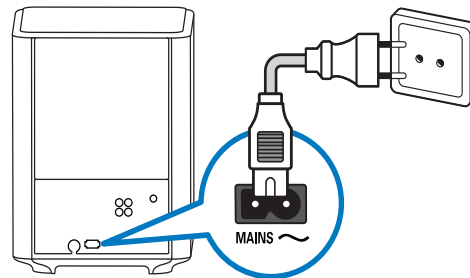
Connect the subwoofer



Connect the power cord

Caution

- Risk of product damage! Ensure that the power supply voltage corresponds to the voltage printed under or on the back of the home theater.



Connect audio from TV or other devices

Use your home theater to play audio from your TV or other devices such as a cable box. Choose from the following connectors.

Tip

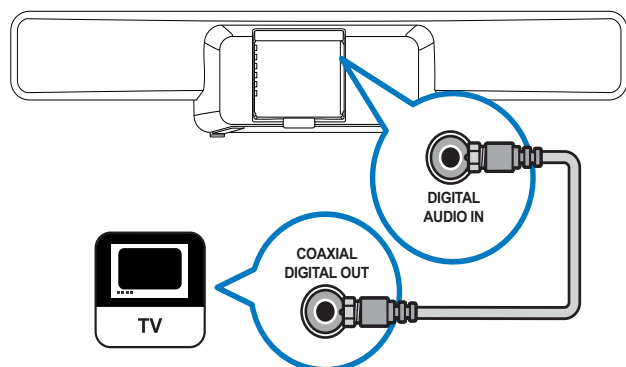
- Press **AUDIO SOURCE** repeatedly to select the audio output of your connection.

Option 1: Connect audio through a digital coaxial cable

Note

- The digital coaxial cable or connector might be labeled **COAXIAL DIGITAL OUT** or **SPDIF OUT**.

(Cable supplied with HTS8161B only)

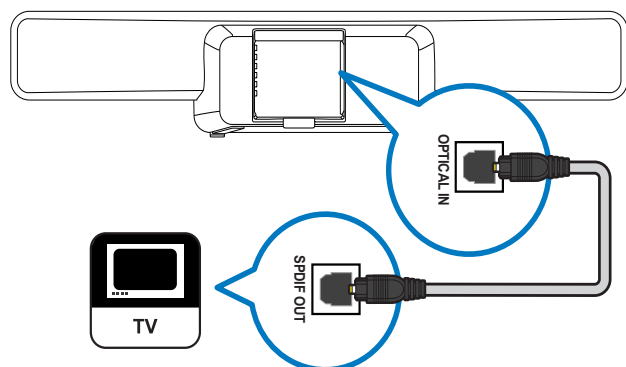


Option 2: Connect audio through a digital optical cable

Note

- The digital optical cable or connector may be labeled as **SPDIF OUT** or **OPTICAL OUT**.

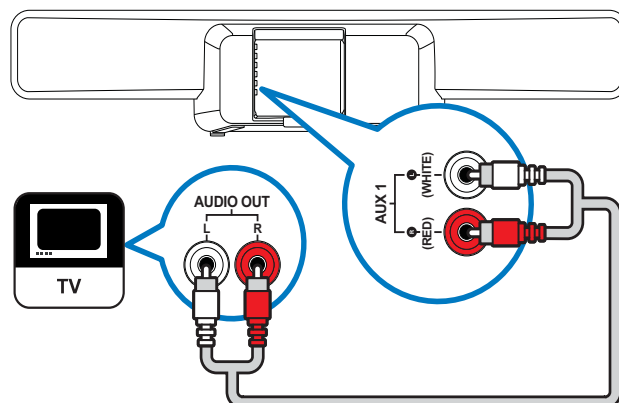
(Cable not supplied)



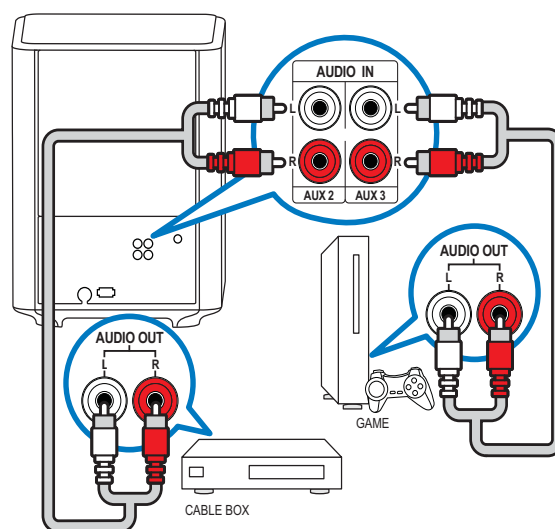
Option 3: Connect audio through analog audio cables

(Cable not supplied)

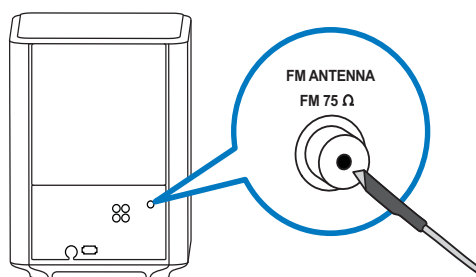
Connect audio from one device:



Connect audio from two or more devices:



Connect and install radio



- 1 Connect one end of the supplied FM antenna to the **FM75Ω** connector on the subwoofer.
- 2 Fasten the other end of the antenna to a wall or furniture.



Tip

- For the best reception, place the antenna away from your TV or other sources of radiation.
- For even better reception of FM stereo, connect an external FM antenna (not supplied).

Install radio stations

- 1 Press **RADIO** on the remote control.
- 2 Press **▶**.
 - ↳ The message "INSTALLATION IN PROGRESS" is displayed and the home theater searches for and stores radio stations. After installation, the home theater plays the first radio station it found.



Note

- The home theater can store up to 40 radio stations.
- You can press **■** to stop the installation.
- If you do not complete the installation, or if fewer than five stations are found, you are prompted to install the radio stations again.
- If fewer than five stations are found or if a stereo signal is not detected, check that the FM antenna is connected correctly.

Reinstall radio stations

- 1 Press **RADIO**.
- 2 Press and hold **PROGRAM** for 5 seconds.
 - ↳ The home theater searches for and stores radio stations. All previously stored stations are replaced.

Tune radio stations manually

You can manually tune radio stations.

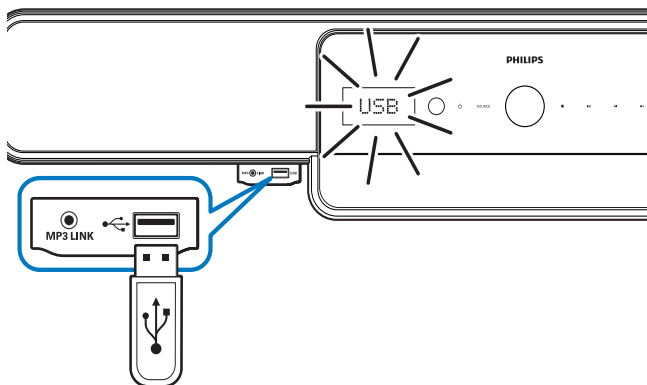
- 1 Press **RADIO**, then press **◀** or **▶**.
 - ↳ The home theater searches for radio stations and stops searching when it finds a station.
- 2 Press **◀** or **▶** until you find a station you like.
- 3 Press **▲** or **▼** to fine tune the station.
- 4 Press **PROGRAM**.
 - ↳ The preset station number blinks.
- 5 Within 20 seconds, press **◀**, **▶** or the number buttons to select a number for the radio station.

If you wait for more than 20 seconds, the home theater exits the installation.
- 6 Press **PROGRAM** to confirm the station number.
 - ↳ The radio station is stored with the selected channel number.

Connect a USB device

You can play media files from the following types of USB devices:

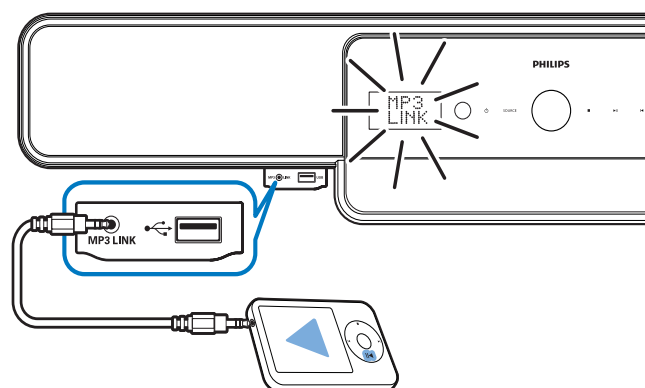
- Flash drive
- Memory card reader
- Hard disk drive with an external power source
- Digital camera



Note

- If the USB device does not fit into the connector, use a USB extension cable.
- The home theater does not support digital cameras that need a PC program to display photos.
- The USB device must be FAT or DOS-formatted, and Mass Storage Class compliant.
- More information on how to play USB devices is available (see 'Play from a USB device' on page 20).

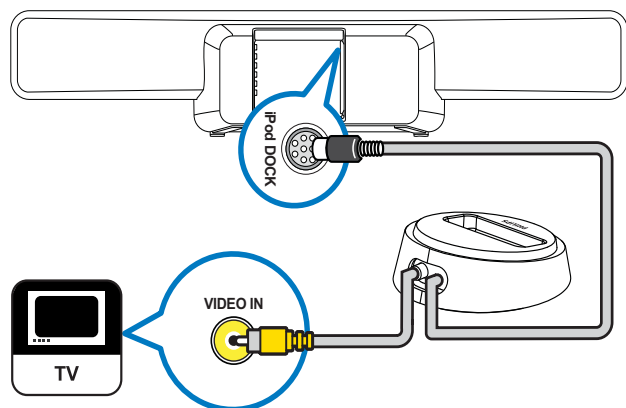
Connect an MP3 player



Note

- More information on playing audio from an MP3 player is available (see 'Play from an MP3 player' on page 21).

Connect and install a Philips iPod dock



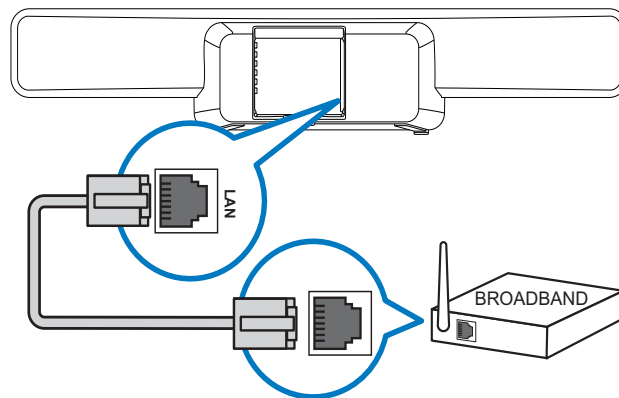
- 1 Connect the iPod docking station (not supplied) to the **iPod DOCK** jack.
- 2 Turn on your iPod and dock it on the docking station.
- 3 To view video:
 - connect a video cable from the docking station to your TV; then
 - turn on **TV ON** on your iPod.
- 4 Press **iPod DOCK** on the remote control of the home theater.
 - ↳ The home theater tests the compatibility of your iPod. The time it takes depends on the iPod model.

Note

- When the iPod is docked and the home theater is in iPod mode, the iPod is charged.
- More information on how to play from the iPod is available (see 'Play from an iPod' on page 21).

Connect to the internet

Connect the home theater to the internet for software updates and BD-Live applications (see 'BD-Live' on page 19). Ensure that you have broadband access and that your firewall is disabled. The network cable is not supplied.



- 1 Connect the home theater to a broadband modem or router.
- 2 Turn on your TV and switch to the correct source for the home theater.
- 3 Press **▲**, select **[Settings]**, and then press **OK**.
- 4 Select **[Advanced Setup] > [Network] > [Next]**.
- 5 Press **OK**.
 - ↳ The home theater connects to the internet. If connection fails, select **[Retry]**, then press **OK**.
- 6 Select **[Finish]**, then press **OK** to exit.

Note

- Use a RJ45 straight cable. Do not use a cross cable.

5 Use your home theater

This section helps you use your home theater to play media from a wide range of sources, including discs, USB storage devices, iPods, MP3 players and FM radio.



Before you start

Check that you:


- Make the necessary connections described in the Quick Start and this manual (see 'Connect your home theater' on page 10).
- Complete the first time setup. First time setup appears when you turn on the home theater for the first time. If you do not complete the setup, you are prompted to complete it each time you turn on the home theater.
- Switch the TV to the correct source for this home theater.

Switch on or to standby

To switch on

When the  (**Power indicator**) is red, the home theater is in standby.
Press  (**Standby-On**) on the main unit or remote control to switch on the home theater.

To switch to standby

When the power indicator is white, the home theater is switched on.
Press  (**Standby-On**) on the main unit or remote control to switch the home theater to standby.



Tip

- Though your home theater consumes very little power when in standby, energy continues to be consumed. When not in use for an extended period of time, disconnect the power cable from the power outlet.



Tip


- If your home theater is connected to the TV through HDMI, use EasyLink HDMI CEC to control both products (see 'Set up EasyLink' on page 28).

Choose your sound




This section helps you choose the ideal sound for your video or music.

Change volume

To increase or decrease volume

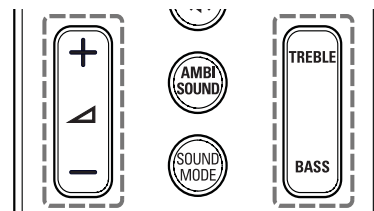
- Press  +/- on the remote control.
- Touch and rotate the volume control wheel on the main unit.


To mute or unmute sound

- Press  on the remote control to mute sound.
- Press  again or press  + to restore sound.

Change treble or bass

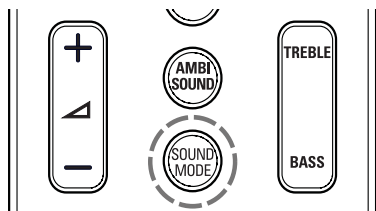
Change the high frequency (treble) or low frequency (bass) settings of the home theater to suit your video or music.



- 1 Press **TREBLE** or **BASS**.
- 2 Press  +/- to increase or decrease treble or bass.

Change sound mode

Select predefined sound modes to suit your video or music.

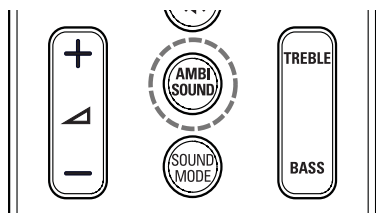


Press **SOUND MODE** repeatedly to cycle through the available sound modes.

Sound mode	Description
ACTION / ROCK	Enhanced low and high-range. Ideal for action movies and rock or pop music.
DRAMA / JAZZ	Clear mid and high-range. Ideal for drama movies and jazz music.
CONCERT/ CLASSIC	Neutral sound. Ideal for live concerts and classical music.
GAMING / PARTY	Moderate low-range and strong mid-range. Ideal for video games and party music.
SPORTS	Moderate mid-range and surround effects for clear vocals and the atmosphere of a live sport venue.
NEWS	Enhanced mid-range for clear vocals and speech.

Change Ambisound mode

Experience an immersive audio experience with Ambisound modes.

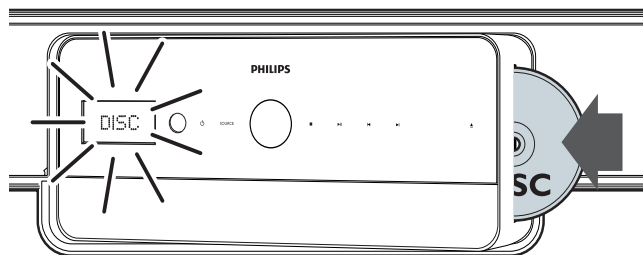


Press **AMBISOUND** repeatedly to cycle through the available Ambisound modes.

Ambisound mode	Description
AUTO	Automatically selects the best Ambisound mode for your video or music. Turned on by default.
MULTI-CHANNEL	Immersive multi-channel sound for an enhanced movie experience.
STEREO	Two-channel stereo sound. Ideal for listening to music.

Play a disc

Your home theater can play a wide variety of discs, ranging from video (Blu-ray, DVD, VCD) to audio and even mixed media discs (for example, a CD-R that contains JPEG pictures and MP3 music).



- 1 Press **▲** to open the disc compartment.
- 2 Insert a disc with its label facing forward. On double-sided discs, place the label you want to play facing forward.
 - ➡ The disc compartment closes automatically. The disc plays or the home theater enters the disc main menu.

DISC appears on the display panel.
- 3 Use the following buttons to control play:

Button	Action
TOP MENU	Access the main menu of a video disc.
Navigation buttons	Navigate menus.
OK	Confirm an entry or selection.
▶	Start or resume play.
⏸	Pause play.
■	Stop play.
⏮ / ⏭	Skip to the previous or next track, chapter or file.
⏮ / ⏭	Fast backward or fast forward. Press repeatedly to change the search speed.
▲ / ▼	Rotate the picture anti-clockwise or clockwise.
◀ / ▶	Skip to the previous or next picture.
REPEAT	On audio discs, repeat a track, the entire disc or shuffle tracks. On video discs, repeat a chapter or title.
i INFO	Display information about what is playing.
☰ OPTIONS	Access video options when a video is played (see 'Use video options' on page 22). Access picture options when pictures are displayed (see 'Use picture options' on page 22). Access audio options when audio is played (see 'Use audio options' on page 23).
AUDIO	In video mode, toggle between audio languages.
SUBTITLE	Select a subtitle language for video.

Use Blu-ray features

Additional features are available on Blu-ray discs.

Bonus View

Blu-ray discs that support the Bonus View feature (also known as Picture-In-Picture) allow you to view special content such as a director's commentary, while watching the main feature.

- 1 If necessary, enable Bonus View or Picture-In-Picture in the Blu-ray disc menu.
- 2 During playback of the main feature, press **BONUS VIEW**.
➡ The Bonus View video appears on-screen in a small window.
- 3 Press **BONUS VIEW** to close the Bonus View video.

BD-Live

BD-Live enabled Blu-ray discs include exclusive services such as online chat, games and other online bonuses such as movie trailers.



Note

- The range of BD-Live services depends on the disc.
- When you use BD-Live, data on the disc and home theater are accessed by the content provider.
- Before using BD-Live, ensure that the home theater is connected to the internet and that network access is properly setup (see 'Connect to the internet' on page 16).

Access BD-Live

- 1 In the Blu-ray disc menu, press the navigation buttons to select the BD-Live icon.
- 2 Press **OK**.
 - ↳ BD-Live starts to load. The loading time depends on the disc and your internet connection.

Navigate BD-Live

- 1 Press navigation buttons to navigate BD-Live
- 2 Press **OK** to select an item

Note

- If there is insufficient memory to download BD-Live content, clear local storage space (see 'Clear local memory' on page 30).

Play from radio

Note

- AM and digital radio are not supported.

- 1 Connect the antenna and install the radio stations (see 'Connect and install radio' on page 14).
- 2 Press **RADIO**.
 - ↳ **RADIO** appears on the display panel. If the name of the FM radio station is transmitted, it is displayed.
- 3 Use the following buttons to control play:

Button	Action
◀ / ▶	Select a preset radio station.
◀ / ▶	Search for a radio station.
▲▼	Fine tune a radio frequency.
■	Press and hold to erase the preset radio station.
AUDIO	In radio mode, toggle between stereo and mono.
PROGRAM	In radio mode, program radio stations.

Play audio from TV or other devices

Press **AUDIO SOURCE** repeatedly to select the audio output of the connected device (see 'Connect audio from TV or other devices' on page 12).

Play from a USB device

Your home theater is fitted with a USB connector that allows you to view pictures, listen to music or watch movies stored on a USB storage device.

Note

- Ensure that a TV is connected to the home theater before playing media files from a USB device.

- 1 Connect the USB device to the home theater (see 'Connect a USB device' on page 15).
- 2 Press **USB**.
 - ↳ A content browser appears.
- 3 Press the navigation buttons to select a file, then press ▶ (play).
- 4 Use the following buttons to control play:

Button	Action
Navigation buttons	Navigate menus.
OK	Confirm an entry or selection.
▶	Start or resume play.
⏸	Pause play.
■	Stop play.
⏮ / ⏭	Skip to the previous or next track, chapter or file.
⏮⏮ / ⏭⏭	Fast backward or fast forward. Press repeatedly to change the search speed.
▲ / ▼	Rotate the picture anti-clockwise or clockwise.
◀ / ▶	Skip to the previous or next picture.
REPEAT	Repeat a single file in the folder or repeat the entire folder. Shuffles files in a folder.
⌂	Access video options when a video is played (see 'Use video options' on page 22).
OPTIONS	Access picture options when pictures are displayed (see 'Use picture options' on page 22). Access audio options when audio is played (see 'Use audio options' on page 23).

Play from an iPod

By connecting and installing a Philips iPod Dock (sold separately), you can use your home theater to play media files on your iPod, including music, movies and pictures.

- 1 Connect the Philips iPod dock to the home theater (see 'Connect and install a Philips iPod dock' on page 16).
- 2 Turn on and dock the iPod.
- 3 Press **iPod DOCK**.
↳ **iPod DOCK** appears on the display panel.
- 4 Use the iPod controls to select and play content.

Play from an MP3 player

Connect and play audio files from an MP3 player, or other external audio devices.

- 1 Connect the MP3 player to the home theater (see 'Connect an MP3 player' on page 15).
- 2 Press **AUDIO SOURCE** repeatedly until **MP3 LINK** appears on the display panel.
- 3 Use the buttons on your MP3 player to select and play audio files.

More play features

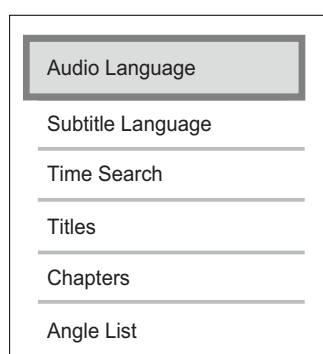
Several advanced features are available for video or pictures play from a disc, USB device or iPod.

Use video options

Access several useful features while viewing video.

Some video options are not available for some video sources.

- 1 During video play, press **⏸** **OPTIONS**.
↳ The video options menu appears.



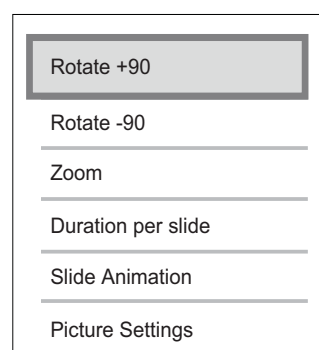
- 2 Press the navigation buttons and **OK** to select and adjust:
 - **[Audio Language]**: Change the audio language of the video.
 - **[Subtitle Language]**: Change the subtitle language of the video.
 - **[Time Search]**: Quick skip to a specific part of the video by entering the time of the scene.
 - **[Titles]**: Select a specific title.
 - **[Chapters]**: Select a specific chapter.
 - **[Angle List]**: Select a different viewing angle.
 - **[PIP Selection]**: Display Picture-in-Picture window.
 - **[Zoom]**: Zoom into video scenes. Press **◀/▶** to select a zoom factor.
 - **[Repeat]**: Select or turn off repeat mode.
 - **[Repeat A-B]**: Loop two points within a chapter. Press **OK** to start the loop and **OK** again to end the loop. Press **OK** to exit the loop.

- **[Picture Settings]**: Select a predefined picture setting. These settings are also available in the home menu (see 'Select a color setting' on page 26).

Use picture options

Access several useful features while viewing pictures.

- 1 When pictures are displayed from a disc or USB device, press **⏸** **OPTIONS**.
↳ The pictures options menu is displayed.

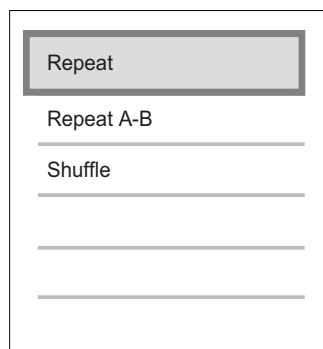


- 2 Press the navigation buttons and **OK** to select and adjust:
 - **[Rotate +90]**: Rotate the picture 90 degree clockwise.
 - **[Rotate -90]**: Rotate the picture 90 degree anti-clockwise.
 - **[Zoom]**: Zoom into a picture. Press **◀/▶** to select a zoom factor.
 - **[Duration per slide]**: Set the display speed for each picture in a slide show.
 - **[Slide Animation]**: Select animation for the slide show.
 - **[Picture Settings]**: Select a predefined picture setting.

Use audio options

Access several useful features while audio is played.

- 1 When audio is played, press **⏮️ OPTIONS**.
↳ The audio options menu is displayed.



- 2 Press the navigation buttons and **OK** to select and adjust:
 - **[Repeat]**: Select or turn off repeat mode.
 - **[Repeat A-B]**: Loop two points within a track. Press **OK** to start the loop and **OK** again to end the loop. Press **OK** to exit the loop.
 - **[Shuffle]**: Play audio tracks in random order.

Play musical slideshow

Play music and pictures simultaneously to create musical slideshow. The files must be stored in the same disc or USB device.

- 1 Select a music track, then press **▶**(play).
- 2 Press **⏮️ BACK** to return to the main menu.
- 3 Select a picture, then press **▶**(play) to start slideshow.
- 4 Press **■** to stop slideshow.
- 5 Press **■** again to stop music.

Synchronize audio with video play

If the audio and video are not synchronized, you can delay the audio to match the video.

- 1 Press **AUDIO SYNC**.
↳ **AUDIO SYNC** appears on the display.
- 2 Press **⏮️ +/-** within five seconds to sync the audio with your video.

6 Change settings

This section helps you to change the settings of your home theater.

! Caution

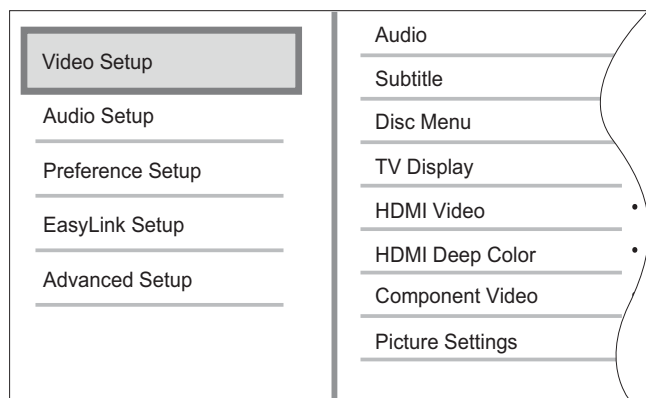
- Many of the settings are already configured with the best value for the home theater. Unless you have a specific reason to change a setting, it is best to leave it at the default value.

≡ Note

- You cannot change a setting that is grayed out.

Access the settings menu

- Press **▲**, select **[Settings]**, and then press **OK**.
↳ The following menu appears.



- Press **▲** or **▼** to select a setup menu, then press **▶**.
See the following sections for information about how to change the settings of your home theater.
- Press **↩ BACK** to return to the previous menu, or press **▲** to exit.

Change video settings

Select audio, subtitle or menu language for a disc

≡ Note

- For some discs, you must use the disc menu to change the audio language.
- If you select a language that is not available on a disc, the home theater uses the default language of the disc.

- Press **▲**, select **[Settings]**, and then press **OK**.
- Select **[Video Setup]**, then press **▶**.
- Select **[Audio]**, **[Subtitle]** or **[Disc Menu]**, and then press **▶**.
- Select the audio, subtitle or menu language for a disc, then press **OK**.

Select picture format

≡ Note

- Some video options are not available for some video sources.

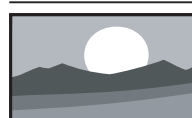
- Press **▲**, select **[Settings]**, and then press **OK**.
- Select **[Video Setup] > [TV Display]**, then press **▶**.
- Select a display format, then press **OK**.



[4:3 Letterbox] - For 4:3 screen TV: wide-screen display with black bars on the top and bottom of the screen.



[4:3 Panscan] - For 4:3 screen TV: full-height display with the trimmed sides.



[16:9 Widescreen] - For wide-screen TV: display ratio 16:9.

Set HDMI video resolution for your TV



Caution

- By default, the home theater automatically selects the best video resolution for your TV. Unless you must select a specific video resolution, do not change this setting.



Note

- Your TV must be connected through HDMI.

- 1 Press **▲**, select **[Settings]**, and then press **OK**.
- 2 Select **[Video Setup] > [HDMI Video]**, then press **▶**.
- 3 Select a video resolution, then press **OK**.
 - **[Auto]** - (This is the default and recommended setting.) Automatically select the best video resolution for your TV.
 - **[Native]** - Select the original video resolution of the video content.
 - **[480i/576i], [480p/576p], [720p], [1080i], [1080p], [1080p/24Hz]**.

If the screen goes blank, you might have chosen a setting that is not compatible with your TV. Wait for 15 seconds or press **HDMI** repeatedly until the picture reappears.

Configure Deep Color

Deep Color displays color with more shades and hues when:

- the video content is recorded in Deep Color,
- your TV supports Deep Color, and
- your TV is connected to the home theater through HDMI.

- 1 Press **▲**, select **[Settings]**, and then press **OK**.
- 2 Select **[Video Setup] > [HDMI Deep Color]**, then press **▶**.

3

Select an option for Deep Color, then press **OK**.

- **[Auto]** - Display images in over a billion colors if your TV supports Deep Color. Display images in 24-bit colors if your TV does not support Deep Color.
- **[On]** - Display images in Deep Color, regardless of whether your TV supports Deep Color.
- **[Off]** - Display images in standard color.

Set component video resolution for your TV



Caution

- By default, the home theater automatically selects the best video resolution for your TV. Unless you need to select a specific video resolution, do not change this setting.

- 1 Press **▲**, select **[Settings]**, and then press **OK**.
- 2 Select **[Video Setup] > [Component Video]**, then press **▶**.
- 3 Select the best video resolution for your TV, then press **OK**.
 - **[480i/576i], [480p/576p], [720p], [1080i]**

If the screen goes blank, you might have chosen a setting that is not compatible with your TV. Wait for 15 seconds for the picture to reappear.



Note

- Copy-protected DVDs can display only 480p/576p or 480i/576i.

Select a color setting

- 1 Press **▲**, select **[Settings]**, and then press **OK**.
- 2 Select **[Video Setup] > [Picture Settings]**, then press **▶**.
- 3 Select a predefined color setting, then press **OK**.
 - **[Standard]** - Original colors.
 - **[Vivid]** - Vibrant colors.
 - **[Cool]** - Soft colors.
 - **[Action]** - Sharp colors that enhance detail in dark areas. Ideal for action movies.
 - **[Animation]** - Contrasted colors. Ideal for animated pictures.

Change audio settings

Select night mode

Night mode is available for Dolby encoded DVD and Blu-ray discs. It decreases the volume of loud sounds and increases the volume of soft sounds such as speech.

- 1 Press **▲**, select **[Settings]**, and then press **OK**.
- 2 Select **[Audio Setup] > [Night Mode]**, then press **▶**.
- 3 Select a sound level, then press **OK**.
 - **[On]** - For quiet sound.
 - **[Off]** - For surround sound with a full dynamic range.

Select audio format for your TV



Note

- Your TV must be connected through HDMI.

- 1 Press **▲**, select **[Settings]**, and then press **OK**.
- 2 Select **[Audio Setup] > [HDMI Audio]**, then press **▶**.
- 3 Select an audio format for your TV, then press **OK**.
 - **[As Source]** - The audio format is not converted. A secondary audio track on a Blu-ray disc might not be available.
 - **[Auto]** - Automatically detect and select the best format for your TV.
 - **[Off]** - Disable audio output from your TV.


Set up Ambisound

You can select options about your room and the position of the home theater to give the best surround sound effect.

- 1 Press **▲**, select **[Settings]**, and then press **OK**.
- 2 Select **[Audio Setup] > [Ambisound Setup]**, then press **OK**.
- 3 Follow the on-screen instructions to complete the setup.

Change preferences

Select the menu language

- 1 Press , select **[Settings]**, and then press **OK**.
- 2 Select **[Preference Setup] > [OSD Language]**, then press **►**.
- 3 Select the menu language, then press **OK**.

Note


- If your home theater is connected through HDMI to an HDMI CEC compliant TV, it switches automatically to the menu language on the TV.

Use parental control

You can restrict access to discs that are recorded with ratings. When access to a disc is restricted, use your personal identification number (PIN) to play the disc.

Tip


- To play all discs irrespective of the rating, select a parental control level of '8' for DVDs and Blu-ray discs.

- 1 Press , select **[Settings]**, and then press **OK**.
- 2 Select **[Preference Setup] > [Parental Control]**, then press **►**.
- 3 Enter your PIN or press '0000' on the number buttons of the remote control.
- 4 Press **▲▼** to select a rating level from 1 to 8, then press **OK**.


Note

- Some discs are not recorded with ratings but display a rating on the label. You cannot use parental control on these discs.

Set or change a PIN


- 1 Press , select **[Settings]**, and then press **OK**.
- 2 Select **[Preference Setup] > [Change PIN]**, then press **OK**.
- 3 Enter your PIN on the number buttons of the remote control, then press **▼**.
 - If you do not have a PIN or if you have forgotten your PIN, enter '0000'.
- 4 Enter a new PIN, then press **▼**.
- 5 Enter the same PIN again to confirm.
- 6 Select **[Confirm]**, then press **OK**.

Change the brightness of the display panel

- 1 Press , select **[Settings]**, and then press **OK**.
- 2 Select **[Preference Setup] > [Display Panel]**, then press **►**.
- 3 Select the brightness of the display panel, then press **OK**.
 - **[100%]** - Brightest
 - **[70%]** - Medium
 - **[40%]** - Dimmest

Enable auto standby

To save energy, you can automatically switch the home theater to standby after 30 minutes of inactivity (for example, in pause or stop mode).

- 1 Press , select **[Settings]**, and then press **OK**.
- 2 Select **[Preference Setup] > [Auto Standby]**, then press **►**.
- 3 Select an option, then press **OK**.
 - **[On]** - Enable auto standby.
 - **[Off]** - Disable auto standby.

Turn the content menu on or off

You can choose to skip or display the content menu for VCD and SVCD discs.

- 1 Press **▲**, select **[Settings]**, and then press **OK**.
- 2 Select **[Preference Setup] > [PBC]**, then press **►**.
- 3 Select an option, then press **OK**.
 - **[On]** - Display the content menu when you insert a VCD or SVCD.
 - **[Off]** - Skip the content menu and play the disc from the first title.

Set a sleep timer

You can switch the home theater to standby after a specific time.

- 1 Press **▲**, select **[Settings]**, and then press **OK**.
- 2 Select **[Preference Setup] > [Sleep Timer]**, then press **►**.
- 3 Select an option, then press **OK**.
 - **[Off]** – Disable the sleep timer.
 - **[15 Minutes]**, **[30 Minutes]**, **[45 Minutes]**, **[60 Minutes]** – Select a delay.

Set up EasyLink

Your home theater supports Philips EasyLink, which uses the HDMI CEC (Consumer Electronics Control) protocol. You can use a single remote control for HDMI CEC compliant devices that are connected through HDMI. Before you change the EasyLink settings, turn on the HDMI CEC operations for the TV and other connected devices. See the TV and device manuals for more information.



Note

- Philips does not guarantee 100% interoperability with all HDMI CEC compliant devices.

Enable and disable EasyLink

- 1 Press **▲**, select **[Settings]**, and then press **OK**.
- 2 Select **[EasyLink Setup] > [EasyLink]**, then press **►**.
- 3 Select an option, then press **OK**.
 - **[On]** - Enable EasyLink.
 - **[Off]** - Disable EasyLink.

Enable one-touch play



Note

- For TVs that support one-touch play.

When you press **►**, the TV and the home theater are turned on. If there is a disc in the home theater, the disc plays and the TV switches to the correct channel.

- 1 Press **▲**, select **[Settings]**, and then press **OK**.
- 2 Select **[EasyLink Setup] > [One Touch Play]**, then press **►**.
- 3 Select an option, then press **OK**.
 - **[On]** - Enable one-touch play.
 - **[Off]** - Disable one-touch play.

Enable one-touch standby

When you press and hold **⏻** (**Standby**) for at least three seconds, the connected HDMI CEC devices switch to standby.

Note

- When one-touch standby is turned off, the home theater cannot be switched to standby by a remote control from the TV or other devices.

- 1 Select **[EasyLink Setup] > [One Touch Standby]**, then press **▶**.
- 2 Select an option, then press **OK**.
 - **[On]** - Enable one-touch standby.
 - **[Off]** - Disable one-touch standby.

Map audio from connected devices

You can map your home theater to the audio output from connected devices.

Note

- The home theater must be connected to the devices by HDMI.
- The connected devices must be turned on.

- 1 Press **⬆**, select **[Settings]**, and then press **OK**.
- 2 Select **[EasyLink Setup] > [System Audio Control]**, then press **▶**.
- 3 Select **[On]**, then press **OK**.
- 4 Read the on-screen instructions and select **[Continue]** to confirm scanning.
 - ↳ The home theater scans for devices and then displays a list of connected devices.
- 5 Select **[Continue]**.
 - ↳ A menu like the following is displayed.

Philips TV	• Aux1
Recorder	• Aux2
DVD player	• Aux3
	• Coaxial
	• Optical

- 6 Select a connected device on the left of the menu, then press **▶**.
- 7 Select the connector that is used for the device, then press **OK**.
- 8 Press **◀**, then repeat the previous two steps to map other connected devices.
- 9 Select **[Finish]** to exit.

Update audio mapping from connected devices

If you have already mapped audio from connected devices (see 'Map audio from connected devices' on page 29), you can use this procedure to update your mapping.

- 1 Press **⬆**, select **[Settings]**, and then press **OK**.
- 2 Select **[EasyLink Setup] > [Audio Input Mapping]**, then press **OK**.
- 3 Select a connected device, then press **▶**.
- 4 Select the connector that is used for the device, then press **OK**.
- 5 Press **◀**, then repeat the previous two steps to map other connected devices.
- 6 Select **[Finish]** to exit.

Change advance settings

Find the DivX VOD registration code for your home theater

DivX Video-on-Demand (VOD) is a digital video delivery service that allows you to download and buy video content from DivX content partners.

Your home theater has a DivX VOD registration code. Before you can buy video content, you must register your home theater on www.divx.com, using the registration code. When you buy video content for your home theater, you can play it on this home theater only.

- 1 Press **▲**, select **[Settings]**, and then press **OK**.
- 2 Select **[Advanced Setup] > [DivX® VOD Code]**, then press **OK**.
↳ The DivX VOD registration code is displayed.
- 3 Write down the code so that you can use it when you register your home theater.

Restore factory settings

You can reset the home theater to the default settings programmed in the factory. You cannot reset the parental control settings to their default values.

- 1 Press **▲**, select **[Settings]**, and then press **OK**.
- 2 Select **[Advanced Setup] > [Restore Factory Settings]**, then press **OK**.
- 3 Confirm your selection.

Change BD-Live settings

Restrict access to BD-Live

- 1 Press **▲**, select **[Settings]**, and then press **OK**.
- 2 Select **[Advanced Setup] > [BD-Live Security]**.
- 3 Select an option, then press **OK**.
 - **[On]** - Restrict access to BD-Live.
 - **[Off]** - Allow access to BD-Live.

Clear local memory


If there is not enough memory space in the home theater to download BD-Live files, delete the files that you previously downloaded.

- 1 Press **▲**, select **[Settings]**, and then press **OK**.
- 2 Select **[Advanced Setup] > [Clear Local Storage]**.
- 3 Press **OK**.
↳ The memory is cleared.


7 Update software

To check for new updates, compare the current software version of your home theater with the latest software version (if available) on the Philips web site.


Check software version

- 1 Press , select **[Settings]**, and then press **OK**.
- 2 Select **[Advanced Setup] > [Version Info.]**, then press **OK**.
↳ The software version is displayed.

Update software from the network

- 1 Prepare the internet connection (see 'Connect to the internet' on page 16).
- 2 Press  and select **[Settings]**.
- 3 Select **[Advanced Setup] > [Software Download] > [Network]**.
↳ If an upgrade media is detected, you are prompted to start or cancel the update.
- 4 Follow the instruction on the TV to confirm the update.
↳ When the update is complete, the home theater automatically switches to standby.
- 5 Disconnect the power cord for a few seconds and then reconnect it.

Update software from a USB device

- 1 Check for the latest software version on www.philips.com/support.
 - Search for your model and click on 'software&drivers'.
- 2 Create a folder named 'UPG' in your USB device.
- 3 Download the software into 'UPG' folder.
- 4 Unzip the software in the 'UPG' folder.
- 5 Connect the USB device to the home theater.
- 6 Press  and select **[Settings]**.
- 7 Select **[Advanced Setup] > [Software Download] > [USB]**.
- 8 Follow the instructions on the TV to confirm the update.
↳ When the update is complete, the home theater automatically switches to standby.
- 9 Disconnect the power cord for a few seconds and then reconnect it.



Caution

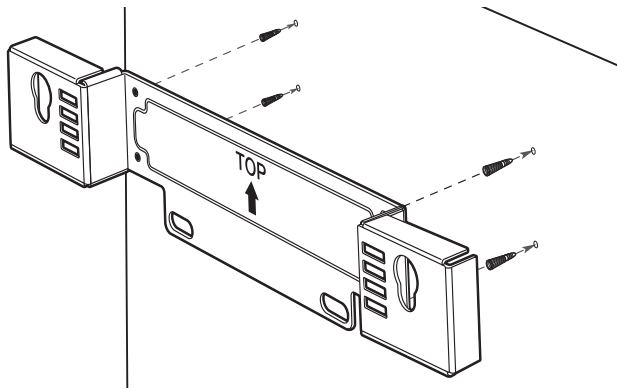
- Do not turn off the power or remove the USB device when the software update is in progress because you might damage the home theater.

8 Wall mount the home theater

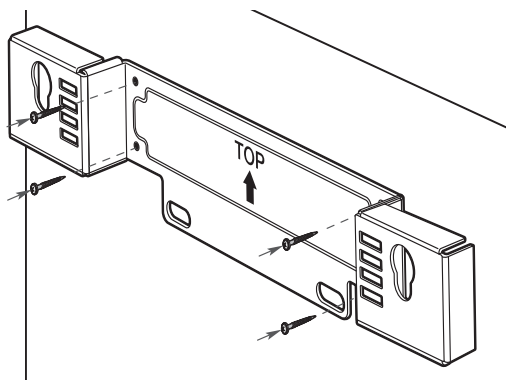
- 1 Position the supplied bracket on the wall, drill the screw holes and insert the rubber wall plugs (not supplied) into the holes.
 - If you mount the home theater below a TV, leave at least 4 inches between the TV and the bracket.

Note

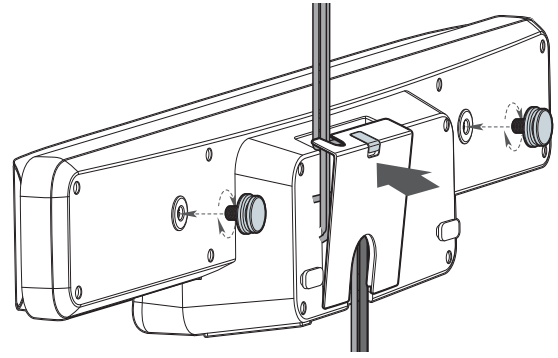
- For secure mounting, use screws that are at least one inch long.



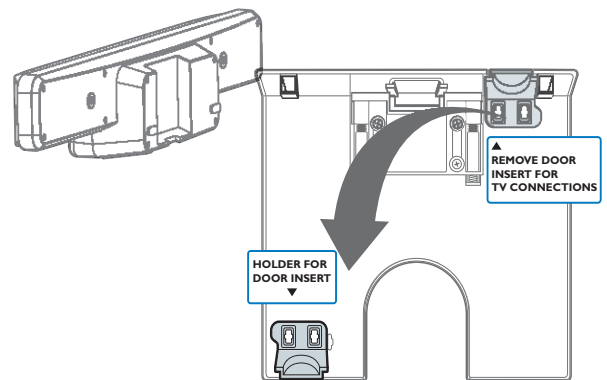
- 2 Secure the bracket onto the wall with the appropriate fixtures (not supplied).



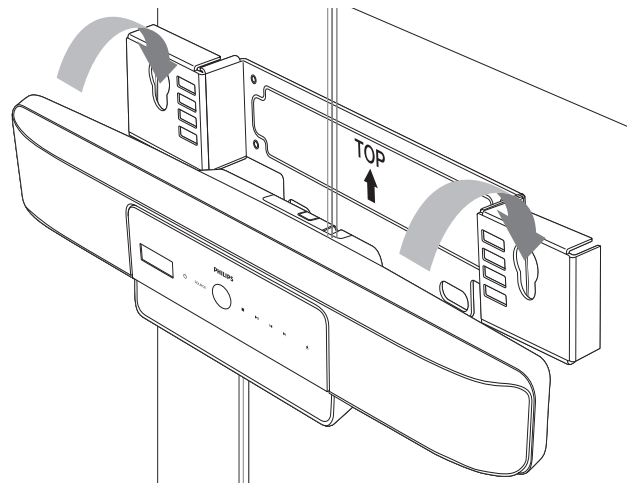
- 3 Ensure that all of the required cables are connected to the home theater and close the rear cover.
- 4 Screw the supplied knobs to the back of the home theater.



- To manage cables from the TV, you can remove the door insert on the rear cover.



- 5 Hook the home theater firmly onto the mounted bracket. Slide the knobs through the key holes to lock into position.



Tip

- You can unscrew the rubber stands at the bottom of this home theater before mounting.

9 Product specifications

Note

- Specification and design are subject to change without notice.

Region code

- Country: Europe, United Kingdom
 - DVD: All, 2
 - Blu-ray: B
- Country: Russia
 - DVD: All, 5
 - Blu-ray: C

File Format

- Audio: .mp3, .wma, .wav
- Video: .avi, .divx, .mp4, .mkv, .mov, .qt, .wmv
- Picture: .jpg, .gif, .png

Playback media

- AVCHD, BD-RE, BD-Video, DVD-Video, DVD+R/+RW, DVD-R/-RW, DVD+R/-R DL, CD-R/CD-RW, Audio CD, Video CD/SVCD, Picture CD, MP3-CD, WMA-CD, DivX (Ultra)-CD, USB flash drive.

Amplifier

- Total output power: 500 W RMS
- Frequency response: 20 Hz ~ 20 kHz / ± 3 dB
- Signal-to-noise ratio: > 65 dB (CCIR)
- Input sensitivity:
 - AUX1: 500 mV
 - AUX2, AUX3: 1000 mV
 - MP3 LINK: 500 mV

Disc

- Laser Type: Semiconductor
- Disc diameter: 12cm / 8cm
- Video decoding: MPEG1/ MPEG2 / DivX / DivX Ultra
- Video DAC: 12 bits, 148 MHz
- Signal system: PAL / NTSC
- Video S/N: 56 dB
- Frequency response:
 - 4 Hz - 20 kHz (44.1 kHz)
 - 4 Hz - 22 kHz (48 kHz)
 - 4 Hz - 44 kHz (96 kHz)
- PCM: IEC 60958
- Dolby Digital: IEC 60958, IEC 61937
- DTS: IEC 60958, IEC 61937

Radio

- Tuning range: FM 87.5-108 MHz (50 kHz)
- 26 dB quieting sensitivity: FM 20 dBf
- IF rejection ratio: FM 60 dB
- Signal-to-noise ratio: FM 60 dB
- Harmonic distortion: FM 3%
- Frequency response: FM 180 Hz~10 kHz / ± 6 dB
- Stereo separation: FM 26 dB (1 kHz)
- Stereo Threshold: FM 23.5 dB

USB

- Compatibility: Hi-Speed USB (2.0)
- Class support: UMS (USB Mass Storage Class)
- File system: FAT12, FAT16, FAT32
- Maximum memory support: < 160GB.

Main Unit

- Dimensions (WxHxD): 999 × 189.24 × 158.74 (mm)
- Weight: 8.4 kg
- Center speaker:
 - Speaker impedance: 8 ohm
 - Speaker driver: 51 mm (2") full-range speaker
 - Frequency response: 180 Hz - 20 kHz
- Left/Right surround speakers:
 - Speaker impedance: 6 ohm
 - Speaker driver: 51 mm (2") full-range speaker
 - Frequency response: 180 Hz - 20 kHz

Laser Specification

- Laser Type:
 - BD Laser Diode: InGaN/AlGaIn
 - DVD Laser Diode: InGaAlP
 - CD Laser Diode: AlGaAs
- Wave length:
 - BD: 405 +5nm/-5nm
 - DVD: 650 +13nm/-10nm
 - CD: 790 +15nm/-15nm
- Output power:
 - BD: Max. ratings: 20mW
 - DVD: Max. ratings: 7mW
 - CD: Max. ratings: 7mW

Powerbox (Subwoofer)

- Power supply: 220 - 240 V; ~50 Hz
- Power consumption: 135 W
- Standby power consumption:
 - Low Power: < 0.3 W
- System: Bass Reflex System
- Impedance: 4 ohm
 - Speaker drivers: 165 mm (6.5") woofer
- Frequency response: 35 Hz ~ 200 Hz
- Dimensions (WxHxD): 321.5 × 424.5 × 321.5 (mm)
- Weight: 12.88 kg

Wall Mount

- Dimensions (WxHxD): 690 × 127 × 51 (mm)
- Weight: 1.35 kg

10 Troubleshooting



Warning

- Risk of electric shock. Never remove the casing of the product.

To keep the warranty valid, never try to repair the product yourself.

If you have problems using this product, check the following points before you request service. If you still have a problem, register your product and get support at www.philips.com/welcome.

If you contact Philips, you will be asked for the model and serial number of your product. The model number and serial number are on the back or bottom of your product. Write the numbers here:

Model No. _____

Serial No. _____

Main unit

The buttons on this home theater do not work.

- Disconnect the home theater from the power outlet for a few minutes, then reconnect.

The home theater does not respond to the remote control.

- Ensure that the home theater is connected to the power outlet.
- Ensure that there is nothing blocking the remote control from the home theater.
- Point the remote control directly at the IR sensor of the home theater.
- Ensure that the batteries in the remote control are inserted correctly.
- Use new batteries.

Picture

No picture.

- Ensure that the TV is switched to the correct source for this home theater.

No picture on HDMI connection.

- If the **[HDMI Video]** setting has been changed, press **HDMI** on the remote control repeatedly until picture appears.
- Check whether the HDMI cable is faulty. Replace with a new HDMI cable.

No high-definition video signal on the TV.

- Ensure that the disc contains high-definition video.
- Ensure that the TV supports high-definition video.

Sound

Audio and video are not synchronized.

- Press **AUDIO SYNC** until 'AUDIO SYNC XXX' is displayed.
- Within five seconds, press **⏮ +/-**.

No sound.

- Ensure that the audio cables are connected and select the correct input source (for example, **AUDIO SOURCE**, **USB**) for the device you want to play.

No sound from TV program.

- Connect an audio cable from the audio input on this home theater to the audio output on your TV. Then press **AUDIO SOURCE** repeatedly to select the correct audio source.

No sound on HDMI connection.

- If the connected device is not HDCP-compliant or is only DVI-compatible, you cannot transmit sound through an HDMI connection. Use an analog or digital audio connection.
- Make sure that the **[HDMI Audio]** setting is turned on.

Play

Distorted sound or echo.

- Ensure that the TV volume is muted or set to minimum if you are playing audio through the home theater.

DivX video files cannot be played.

- Ensure that the DivX file is encoded according to the 'Home Theater Profile' with the DivX encoder.
- Ensure that the DivX video file is complete.

DivX subtitles do not display correctly.

- Ensure that the subtitle file name is the same as the movie file name.
- Select the correct character set:
1) Press **⏏** **OPTIONS**. 2) Select **[Character Set]** then press **▶**. 3) Select the supported character set.

EasyLink feature does not work.

- Ensure that the home theater is connected to a Philips brand EasyLink TV and that EasyLink is on (see 'Enable and disable EasyLink' on page 28).

'No entry' sign appears on the TV.

- The operation is not possible.

The contents of a USB device cannot be read.

- Ensure that the format of the USB device is compatible with this home theater.
- Ensure that the USB device is formatted with a file system that is supported by this home theater (note that NTFS is not supported).

I do not want my home theater to be switched on when I switch on my TV.

- This is the correct behavior for Philips EasyLink (HDMI-CEC). To make the home theater work independently, turn EasyLink off (see 'Enable and disable EasyLink' on page 28).

I cannot access BD-Live features.

- Check the network connection or ensure that the network has been set up (see 'Connect to the internet' on page 16).
- Clear local storage. (see 'Clear local memory' on page 30)
- Ensure that the Blu-ray disc supports BD Live feature.

11 Index

A

Ambisound	26, 18
amplifier	33
audio	
bass	17
connect audio from TV	12, 20
connection	12
format for TV	26
language	24
map from connected devices	29
synchronize with video	23
treble	17
troubleshooting	35
volume	17
auto standby	27

B

BD-Live	
Blu-ray	19
change settings	30
connection	16
memory full	30
Blu-ray	19
Bonus View	19
brightness	27

C

care	5
CD	6
chapter	22
color	
Deep Color	25
settings	26
connect	
audio from TV	12
internet	16
iPod dock	16
map audio from connected devices	29
MP3 player	15
power	12

radio	14
subwoofer	12
TV	11
USB	15
connectors	10
contact us	35

D

Deep Color	25
disc	
content menu	28
language	24
play	18
ratings	27
specifications	33
supported discs	33
display	
color	26
picture format	25
resolution	25
settings	24
zoom	22
display panel	
brightness	27
overview	7
disposal of your home theater	6
DivX	
registration code	30
troubleshooting	36

E

EasyLink	
audio mapping	29, 29
disable	28
troubleshooting	36
energy saving	27
environment	6, 27

F

file formats	33
FM antenna	14

H	
HDMI CEC (see Easylink)	28
Home menu	24

I	
internet	
BD-Live	19
Bonus View	19
connect	16
software update	31
iPod	
connect	16
play	21

L	
language	
audio	22
menu	27
on discs	24
subtitle	22
laser specification	33

M	
menu	
content menu on discs	28
language	27
language on discs	24
settings	24
model number	35
MP3 player	
connect	15
play	21

N	
night mode	26

O	
one-touch play	28
one-touch standby	29
overview	
connectors	10
main unit	7
remote control	8

P	
parental control	27
picture	
format	24
options	22
rotate	22
slide show	23, 22, 18
troubleshooting	35
PIN number	27
play	
disc	18
iPod	21
MP3 player	21
one-touch play	28
radio	20
USB device	20
power	
connect	12
saving	27
specification	33
product care	5
product specifications	33

R	
radio	
connect	14
install stations	14
play	20
specifications	33
ratings	27
recycling	6
region code	33
register your home theater	7
remote control	8
repeat	22
resolution	
component video resolution	25
HDMI video resolution	25
restore factory settings	30
rotate pictures	22

S

safety	4
serial number	35
settings	
BD-Live	30
menu	24
parental control	27
picture	26
preferences	27
restore factory settings	30
sleep timer	28
slideshow	23, 22
software	
update	31
version	31
sound	
Ambisound	18
audio format for TV	26
mode	18
night mode	26
treble and bass	17
troubleshooting	35
volume	17
specifications	33
standby	
auto standby	27
one-touch standby	29
sleep timer	28
switch to	17
subtitle	
language	22
language on discs	24
subwoofer	12
synchronize audio and video	23

T

technical specifications	33
title	22
troubleshooting	35
tune radio	14
TV	
audio format	26
audio from TV	12, 20
connect	11

U

USB	
connect	15
photo	22, 20
play	20
software update	31
user manual CD	6

V

video	
options	22
resolution	25, 25
search	22
synchronize with audio	23
troubleshooting	35
video on demand (VOD)	30
volume	17

W

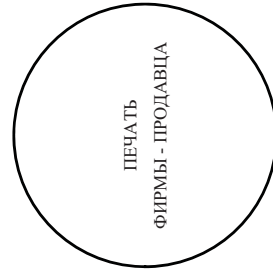
wall mount	33, 32
-------------------	--------

Z

zoom	
into picture	22
into video	22

ГАРАНТИЙНЫЙ ТАЛОН БЫТОВАЯ ЭЛЕКТРОНИКА

Модель:
Серийный номер:
Дата продажи:
ПРОДАВЕЦ:
Название фирмы:
Телефон фирмы:
Адрес и E-mail:



Изделие получил в исправном состоянии.
С условиями гарантии ознакомлен и согласен

(подпись покупателя)

Внимание! Гарантийный талон недействителен без печати продавца.

Уважаемый потребитель!

Компания изготовитель выражает благодарность за Ваш выбор и гарантирует высокое качество и безупречное функционирование данного изделия при соблюдении правил его эксплуатации.

При покупке убедительно просим Вас проверить правильность заполнения гарантийного талона. При этом серийный номер и наименование модели приобретенного Вами изделия должны быть идентичны записи в гарантийном талоне. Не допускается внесения в талон каких-либо изменений, исправлений. В случае неправильного или неполного заполнения гарантийного талона немедленно обратитесь к продавцу.

При бережном и внимательном отношении изделие будет надежно служить Вам долгие годы. В ходе эксплуатации не допускайте механических повреждений, попадания вовнутрь посторонних предметов, жидкостей, насекомых, в течение всего срока службы следите за сохранностью идентификационной наклейки с обозначением наименования модели и серийного номера изделия.

Если в процессе эксплуатации изделия Вы сочтете, что параметры работы отличаются от изложенных в инструкции пользователя, рекомендуем обратиться за консультацией в наш Информационный центр.

Условия гарантии

Объект	Изделие	Пульт дистанционного управления
Срок службы (исчисляется со дня передачи товара потребителю)	3 года	1 год
Срок гарантии (исчисляется со дня передачи товара потребителю)	1 год	1 год

По окончании срока службы обратитесь в авторизованный сервисный центр для проведения профилактических работ и получения рекомендаций по дальнейшей эксплуатации изделия.

Во избежание возможных недоразумений, сохраняйте в течение срока службы документы, прилагаемые к товару при его продаже (данный гарантийный талон, товарный и кассовый чеки, накладные, инструкцию по эксплуатации (на любом носителе) и иные документы).

Гарантийное обслуживание не распространяется на изделия, недостатки которых возникли вследствие:

1. Нарушения Потребителем правил эксплуатации, хранения или транспортировки товара
2. Действий третьих лиц:
 - ремонта неуполномоченными лицами;
 - внесения несанкционированных изготовителем конструктивных или схемотехнических изменений и изменений программного обеспечения
 - отклонение от Государственных Технических Стандартов (ГОСТов) и норм питающих, телекоммуникационных и кабельных сетей;
 - неправильной установки и подключения изделия;
3. Действия непреодолимой силы (стихия, пожар, молния и т.п.);

Любую информацию о расположении сервисных центров и о сервисном обслуживании Вы можете получить в Информационном Центре

Телефон: (495) 961-1111, 8 800 200-0880 (бесплатный звонок по России).

Интернет: www.philips.ru

