

# Always there to help you

Register your product and get support at  
[www.philips.com/support](http://www.philips.com/support)



HTL1190B

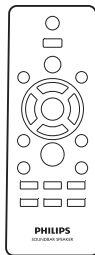
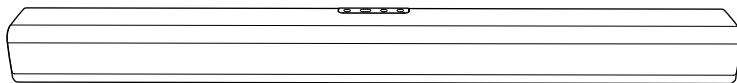


## Quick start guide

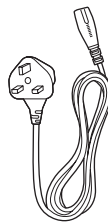
**PHILIPS**



Before using your product, read all accompanying safety information



AAA

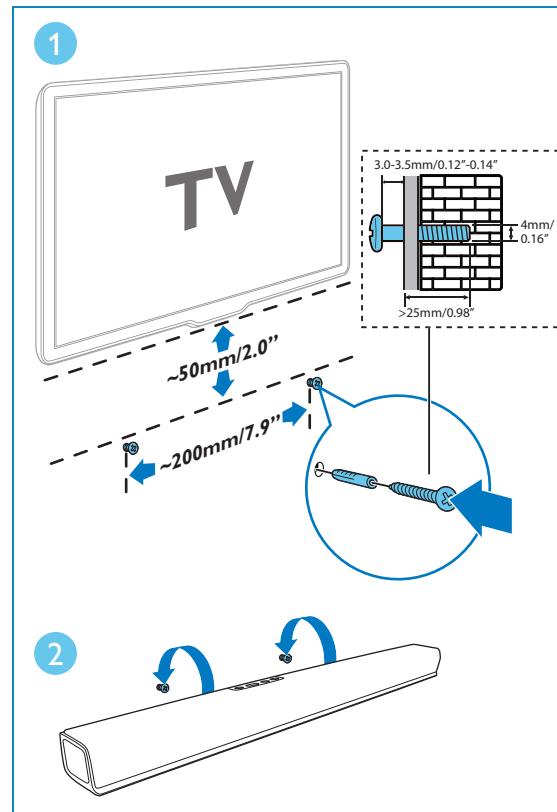
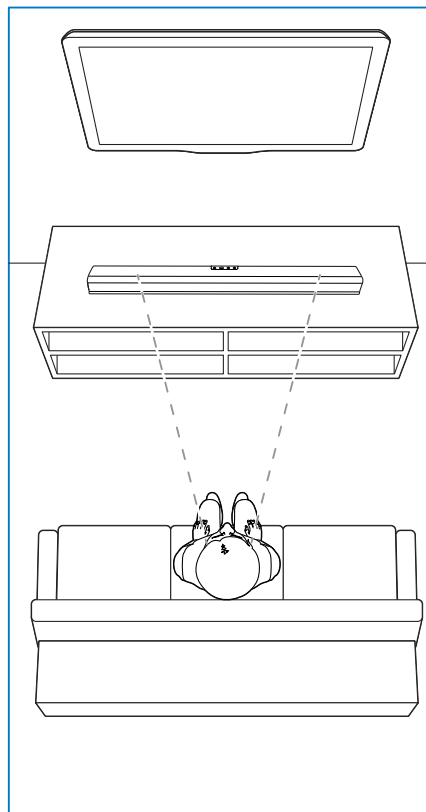


Power Cord



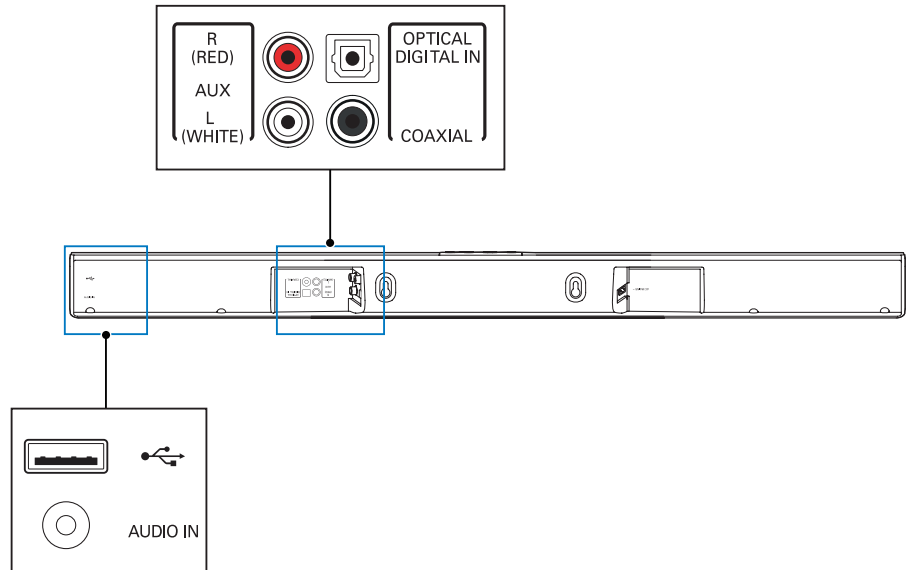
# 1

Position this product  
Wall mount this product (optional)



2

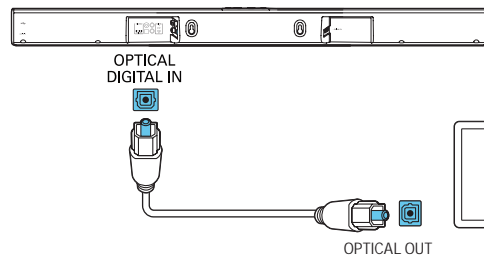
Connect this product



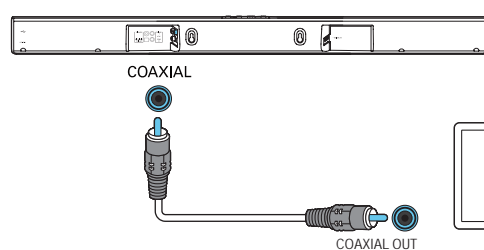
# 3

Hear audio from TV in one of the following ways (Mute your TV).

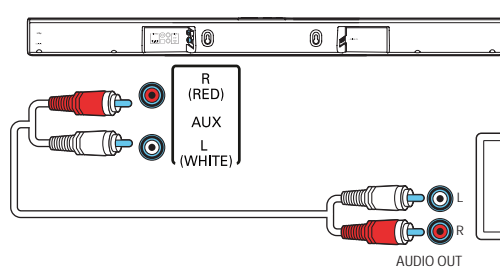
## OPTICAL



## COAXIAL

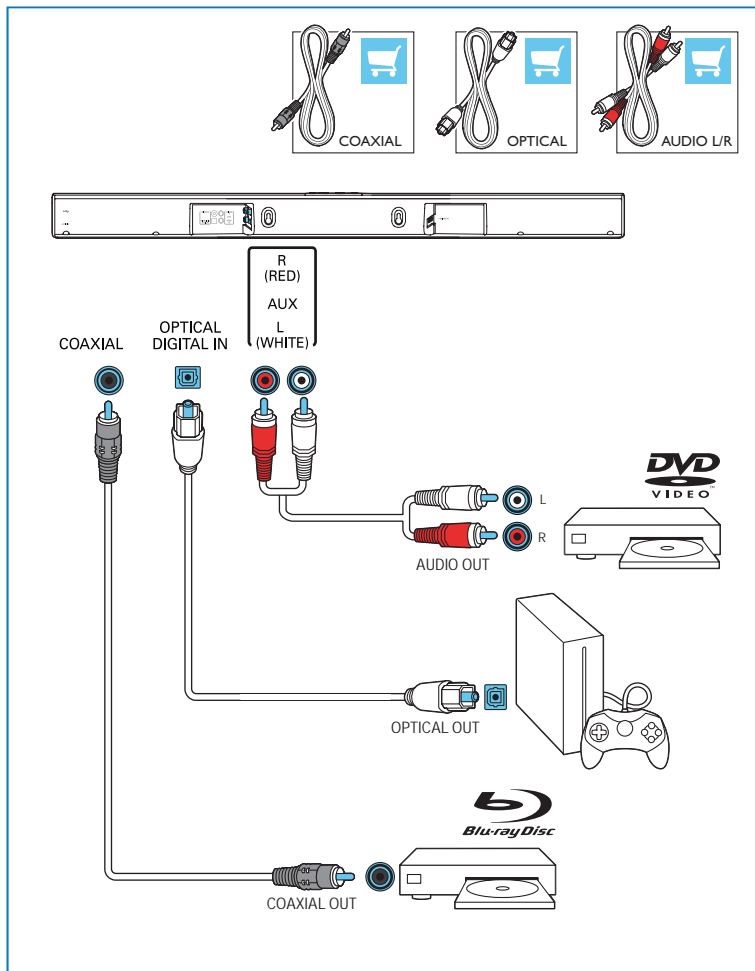


## AUDIO L/R



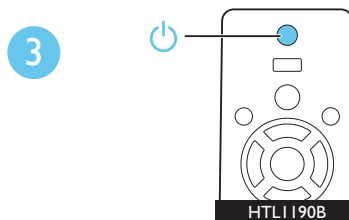
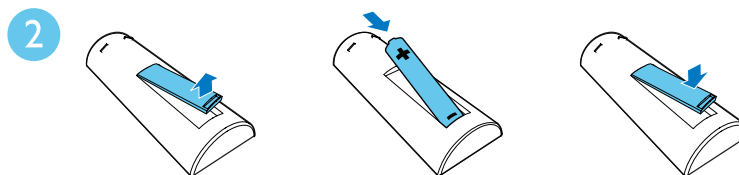
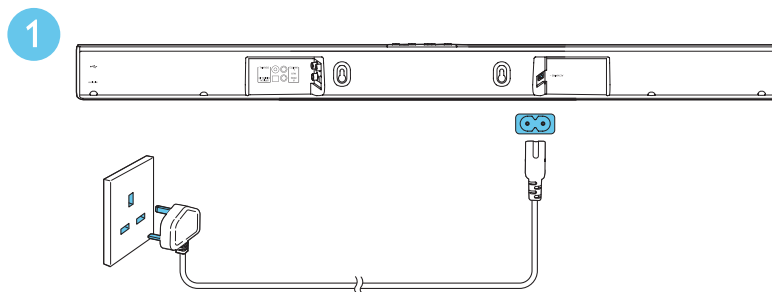
4

Enjoy audio from your devices



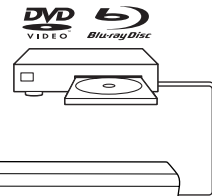
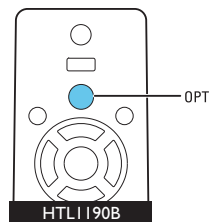
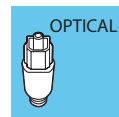
# 5

Switch on this product

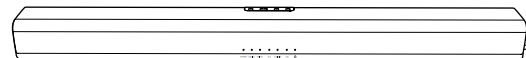
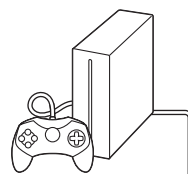
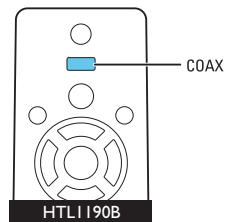


6

Select the correct audio source



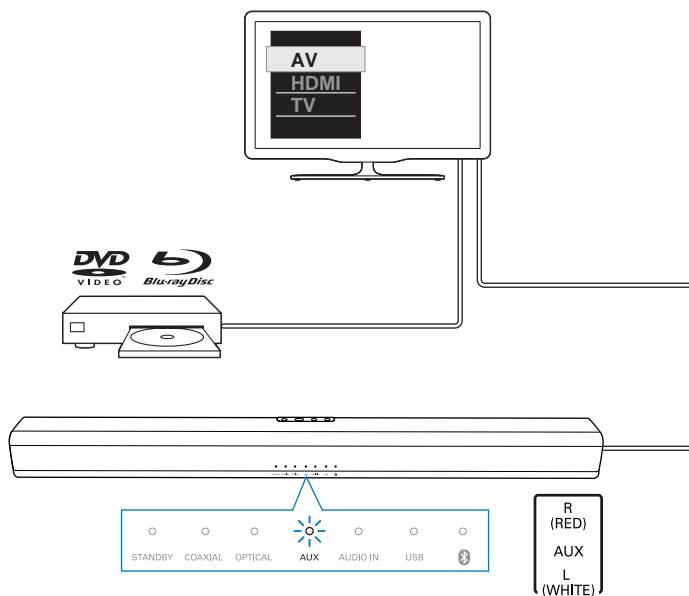
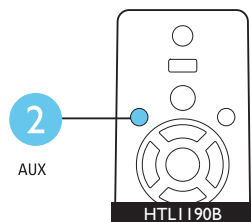
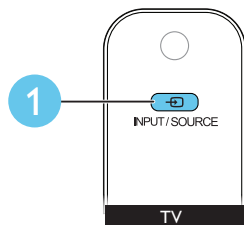
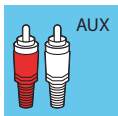
OPTICAL  
DIGITAL IN



COAXIAL

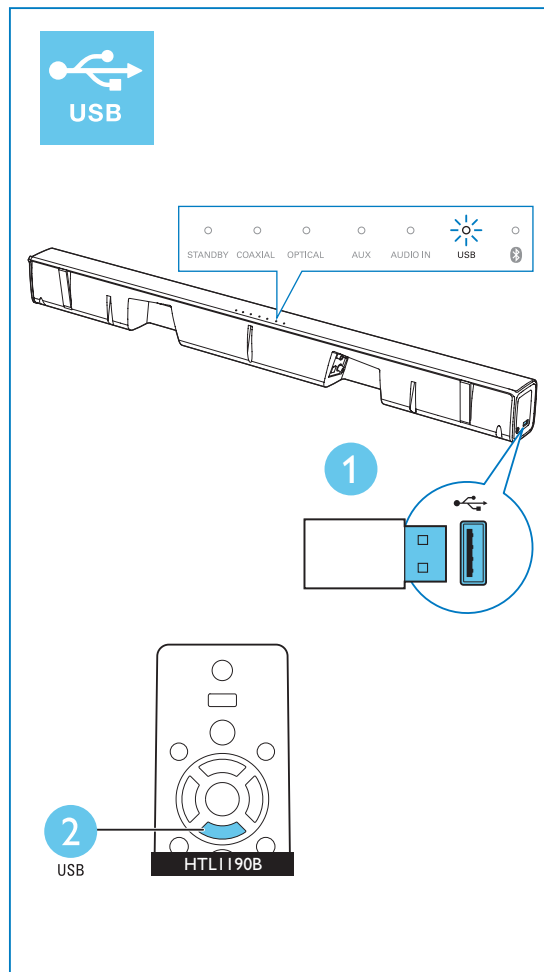
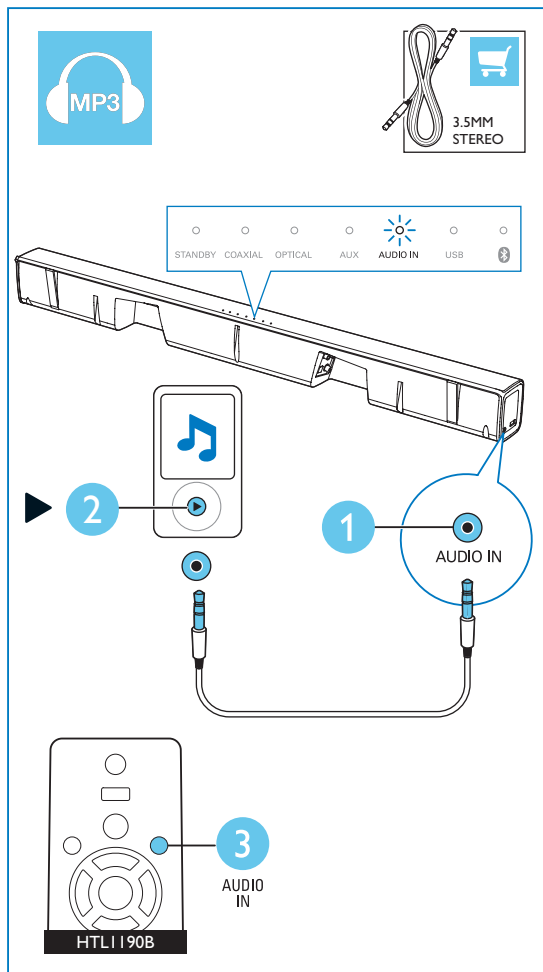






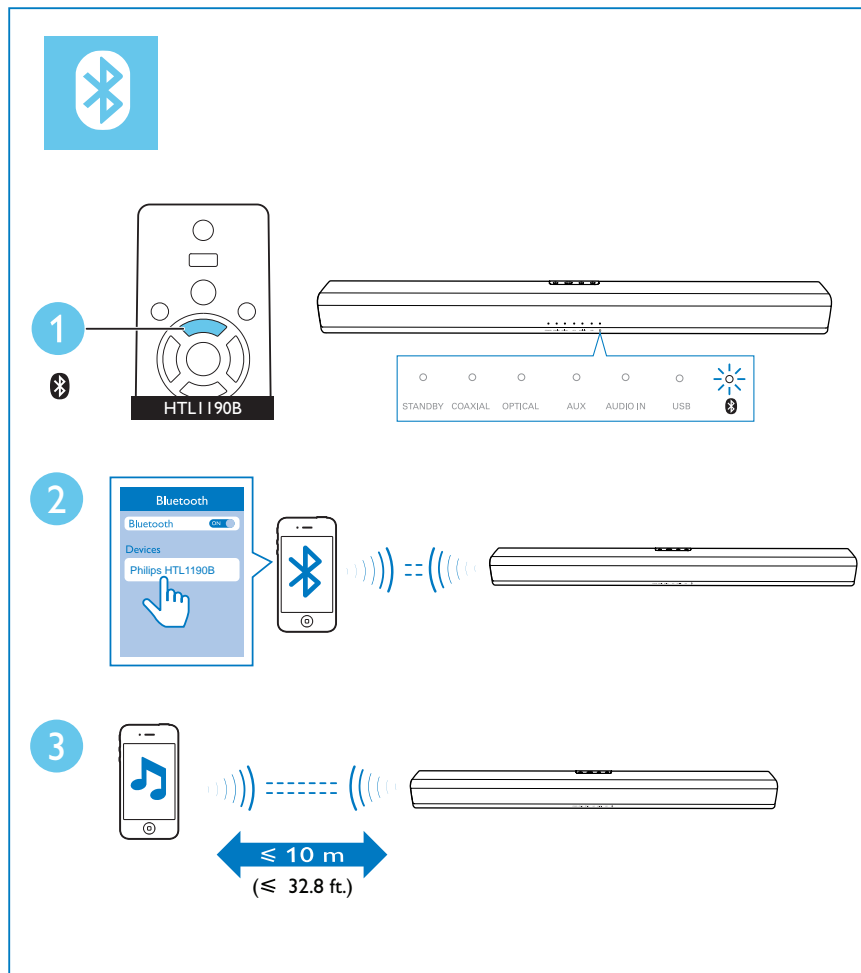
# 7

Play other devices



# 8

Play audio through Bluetooth





For more information about using this product, visit [www.philips.com/support](http://www.philips.com/support)



[www.philips.com/support](http://www.philips.com/support)



Manufactured under license from Dolby Laboratories. Dolby and the double-D symbol are trademarks of Dolby Laboratories.



The Bluetooth® word mark and logos are registered trademarks owned by Bluetooth SIG, Inc. and any use of such marks by Gibson is under license. Other trademarks and trade names are those of their respective owners.



Specifications are subject to change without notice  
2015 © Gibson Innovations Limited. All rights reserved.

This product has been manufactured by, and is sold under the responsibility of Gibson Innovations Ltd., and Gibson Innovations Ltd. is the warrantor in relation to this product. Philips and the Philips Shield Emblem are registered trademarks of Koninklijke Philips N.V. and are used under license from Koninklijke Philips N.V.

HTL1190B\_05\_QSG\_V2.0

