

Register your product and get support at
www.philips.com/welcome

MCD900



EN User manual

PHILIPS

Contents

1 Important	4	8 Play from an external audio device (AUX)	18
Safety	4	Play from an external audio device	18
Environmental notices	5		
Trademark notice	5		
2 Your MCD900	6	9 Settings	19
Introduction	6	Play modes	19
What's in the box	6	Sound settings	19
Overview	6	Display settings	19
		Slideshow settings	20
		Album art (in the USB mode)	20
		Clicker sound	20
		Clock settings	20
		Language	22
		Demo mode	22
		Restore factory settings	22
3 Prepare	10	10 Maintenance	22
Place the Soundsphere speakers	10	Cleaning	22
Install batteries into the remote control	11		
4 Connect	11	11 Technical data	22
Connect the main unit and CD/DVD unit	11		
Connect speakers	11	12 Troubleshooting	24
Connect for disc play	11		
Connect the FM antenna	12		
Connect external audio devices	13		
Turn on/off	13		
5 Play music CDs/movie DVDs	14		
Basic operations	14		
Use the disc menu	14		
Play movie discs(DVD/DivX/VCD)	14		
Program favorite chapters/tracks	15		
Select play options	15		
6 Play from a USB flash device	16		
Connect a USB flash device	16		
Library on the USB flash device	16		
Play from the USB flash device	16		
Search for music/pictures	16		
7 Play FM radio	17		
Tune to FM radio stations	17		
Edit preset stations	18		
Listen to FM radio	18		
RDS (Radio Data System)	18		

1 Important

Safety

Information for Europe:
Know these safety symbols



The 'exclamation mark' calls attention to features for which you should carefully read the supplied literature to prevent operating and maintenance problems. The 'lightening bolt' symbol indicates uninsulated components within the product that can cause an electric shock.

To reduce the risk of fire or electric shock, do not expose the product to rain or moisture and do not place any objects filled with liquids, such as vases, on the product.

- ① Read these instructions.
- ② Keep these instructions.
- ③ Heed all warnings.
- ④ Follow all instructions.
- ⑤ Do not use this product near water.
- ⑥ Clean only with dry cloth.
- ⑦ Do not block any ventilation openings. Install in accordance with the manufacturer's instructions.
- ⑧ Do not remove the casing of this product.
- ⑨ Only use this product indoors. Do not expose the product to dripping / splashing water, rain or high humidity.
- ⑩ Keep this product away from direct sunlight, naked flames or heat.
- ⑪ Do not install near any heat sources such as radiators, heat registers, stoves, or other electrical equipment (including amplifiers).
- ⑫ Do not place any other electrical equipment on the product.
- ⑬ Do not place any sources of danger on the product (e.g. objects containing liquids, burning candles).
- ⑭ This product may include batteries. Please refer to safety and disposal instructions for batteries in this user manual.

- ⑮ This product may contain lead and mercury. Disposal of these materials may be regulated due to environmental considerations. Please refer to disposal instructions in this user manual.

! Caution

- Use of controls or adjustments or performance of procedures other than herein may result in hazardous radiation exposure or other unsafe operation.

! Warning

- Never remove the casing of this apparatus.
- Never lubricate any part of this apparatus.
- Never place this apparatus on other electrical equipment.
- Keep this apparatus away from direct sunlight, naked flames or heat.
- Never look into the laser beam inside this apparatus.
- Ensure that you always have easy access to the power cord, plug or adaptor to disconnect this apparatus from the power.
- Where the mains plug or an appliance coupler is used as the disconnect device, the disconnect device shall remain readily operable.

Risk of overheating! Never install this apparatus in a confined space. Always leave a space of at least four inches around this apparatus for ventilation. Ensure curtains or other objects never cover the ventilation slots on this apparatus.

Hearing Safety

Listen at a moderate volume:

Using headphones at a high volume can impair your hearing. This product can produce sounds in decibel ranges that may cause hearing loss for a normal person, even for exposure less than a minute. The higher decibel ranges are offered for those that may have already experienced some hearing loss. Sound can be deceiving. Over time your hearing 'comfort level' adapts to higher volumes of sound. So after prolonged listening, what sounds 'normal' can actually be loud and harmful to your hearing. To guard against this, set your volume to a safe level before your hearing adapts and leave it there.

To establish a safe volume level:

Set your volume control at a low setting. Slowly increase the sound until you can hear it comfortably and clearly, without distortion.

Listen for reasonable periods of time:

Prolonged exposure to sound, even at normally 'safe' levels, can also cause hearing loss.

Be sure to use your equipment reasonably and take appropriate breaks.

Be sure to observe the following guidelines when using your headphones.



Listen at reasonable volumes for reasonable periods of time.
Be careful not to adjust the volume as your hearing adapts.
Do not turn up the volume so high that you can't hear what's around you.
You should use caution or temporarily discontinue use in potentially hazardous situations.

Environmental notices

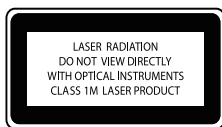
This product complies with the radio interference requirements of the European Community.



This apparatus includes this label:

Modifications

Modifications not authorized by the manufacturer may void user's authority to operate this product.



Recycling

Your product is designed and manufactured with high quality materials and components, which can be recycled and reused.
When you see the crossed-out wheel bin symbol attached to a product, it means the product is covered by the European Directive 2002/96/EC:
Never dispose of your product with other household waste. Please inform yourself about the local rules on the separate collection of electrical and electronic products. The correct disposal of your old product helps prevent potentially negative consequences on the environment and human health.



Information about the use of batteries:

Caution

- Risk of leakage: Only use the specified type of batteries. Do not mix new and used batteries. Do not mix different brands of batteries. Observe correct polarity. Remove batteries from products that are not in use for a longer period of time. Store batteries in a dry place.
- Risk of injury: Wear gloves when handling leaking batteries. Keep batteries out of reach of children and pets.
- Risk of explosion: Do not short circuit batteries. Do not expose batteries to excessive heat. Do not throw batteries into the fire. Do not damage or disassemble batteries. Do not recharge non-rechargeable batteries.

Battery disposal information:

Your product contains batteries covered by the European Directive 2006/66/EC, which cannot be disposed of with normal household waste. Please inform yourself about the local rules on separate collection of batteries. The correct disposal of batteries helps prevent potentially negative consequences on the environment and human health.



Trademark notice

HDMI, and HDMI logo and High-Definition Multimedia Interface are trademarks or registered trademarks of HDMI licensing LLC.

Manufactured under license from Dolby Laboratories. Dolby and the double-D symbol are trademarks of Dolby Laboratories.

DivX® and DivX Ultra® are registered trademarks of DivX, Inc. and are used under license. DivX Ultra® Certified to play DivX® video with advanced features and premium content.

ABOUT DIVX VIDEO: DivX® is a digital video format created by DivX, Inc. This is an official DivX Certified device that plays DivX video. Visit www.divx.com for more information and software tools to convert your files into DivX video.

ABOUT DIVX VIDEO-ON-DEMAND: This DivX Certified® device must be registered in order to play DivX Video-on-Demand (VOD) content. To generate the registration code, locate the DivX VOD section in the device setup menu. Go to vod.divx.com with this code to complete the registration process and learn more about DivX VOD.

'DVD Video' is a trademark of DVD Format/Logo Licensing Corporation. Windows Media and the Windows logo are trademarks, or registered trademarks of Microsoft Corporation in the United States and/or other countries.

The making of unauthorized copies of copy-

protected material, including computer programs, files, broadcasts and sound recordings, may be an infringement of copyrights and constitute a criminal offence. This equipment should not be used for such purposes. This product incorporates copyright protection technology that is protected by U.S. patents and other intellectual property rights. Use of this copyright protection technology must be authorized by Macrovision, and is intended for home and other limited viewing uses only unless otherwise authorized by Macrovision. Reserve engineering or disassembly is prohibited.



2 Your MCD900

Congratulations on your purchase, and welcome to Philips! To fully benefit from the support that Philips offers, register your product at www.philips.com/welcome.

Introduction

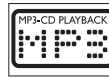
MCD900 can

- Connect a USB flash device;
- Connect the existing home audio/video systems, including TV, audio systems and MP3 players.

With such connections, you can

- Play music stored on a USB flash device through the Soundsphere speakers;
- Play movie DVDs on a TV;
- Play music from an external audio system/portable media player through the Soundsphere speakers.

The DVD player on MCD900 supports these disc formats:



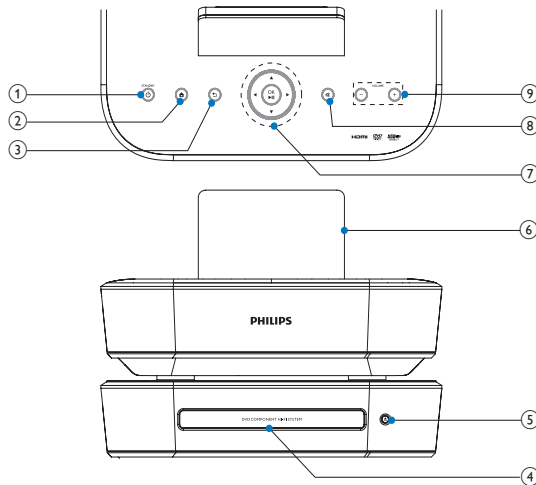
What's in the box

Check and identify the contents of your package:

- Main unit and CD/DVD unit
- 2 SoundSphere speakers (with connection cables)
- Remote control with batteries
- Composite audio/video cables
- FM antenna
- AC power cord
- Quick Start Guide
- User Manual

Overview

Top and front view



- | | |
|--|--|
| 1. | |
| Press to turn on the set; | |
| To turn off, press to switch to active standby; or, press and hold to switch to Eco standby. | |
| Exit Demo mode. | |
| 2. | |
| Return to Home screen (main menu). | |

- | | |
|-------------------------------------|------------------|
| 3. | |
| Go back to the previous screen. | |
| 4. | Disc compartment |
| 5. | |
| Open or close the disc compartment. | |
| 6. | LCD display |

7. ▲/▼/◀▶
Navigation buttons
Press to navigate through menus.
- ▲▼
In **USB** mode:
Superscroll: In a long list of options, press and hold to start Superscroll. Release to jump to the first item starting with current alphabet/number.
- In **DISC** mode:
Select an album (for MP3/WMA CDs).
- ◀▶

In **FM RADIO** mode:

Press and hold to start the auto tuning to the next available station;
Press repeatedly for fine tuning.

OK/▶▶

Confirm selection.

Start/pause/resume play.

In **USB**: Start to play the entire file folder(SuperPlay™).

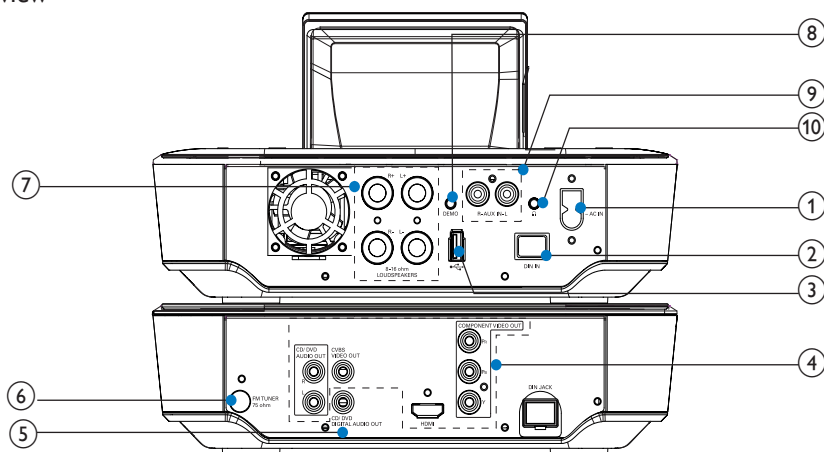
8. 🎧

Mute/ unmute sound.

9. **— VOLUME +**

Increase/decrease volume.

Rear view



see 'Connect' on page 11

1. **~ AC IN**
for AC power cord
2. **DIN IN**
socket for the connection between the main unit and CD/DVD unit
3. 🎧
USB port for the USB flash device
4. **CVBS VIDEO OUT, CD/DVD AUDIO OUT**
for the supplied composite audio/video cable that connects the disc player and a standard TV
- HDMI**
for the HDMI cable (not supplied) that connects the disc player and a high-definition TV (HDTV)

5. **CD/DVD DIGITAL AUDIO OUT**

Digital audio output socket for the disc play through an external speaker system

6. **FM TUNER**

for the supplied FM antenna

7. **LOUDSPEAKERS**

for connection cables that connect the supplied Soundsphere speakers

8. **DEMO**

for the use by dealers only

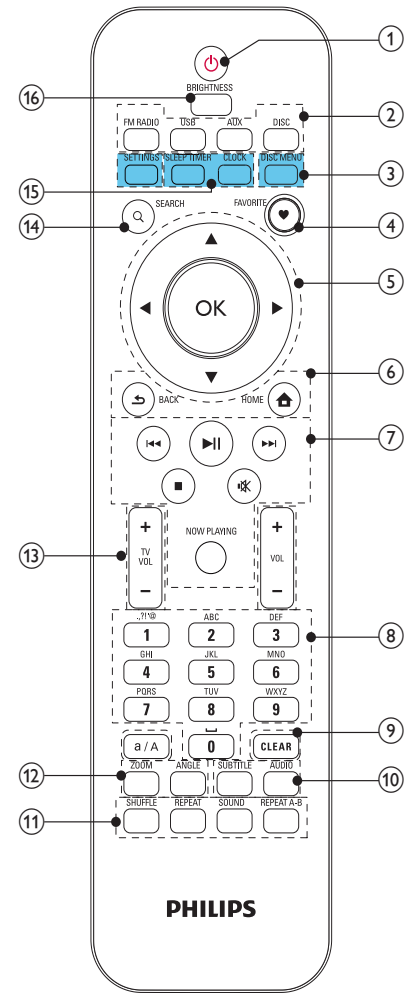
9. **AUX IN L / R**

Audio input sockets for an external audio system/portable media player to play through the speakers on MCD900

10. 🎧

3.5 mm headphone jack

Remote control



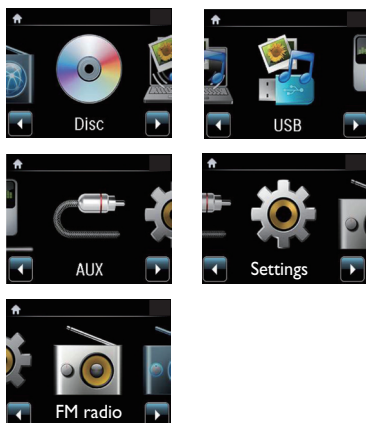
- 1. Press to turn on the unit; To turn off, press to switch to active standby; or, press and hold to switch to Eco standby. Exit Demo mode.
- 2. **Source selector**
Select a media source:
FM RADIO: FM radio stations, with RDS (Radio Data System) supported;
USB: Songs/photos on the USB mass storage device connected to the unit;

- AUX:** Connected external audio device (e.g. an MP3 player or other portable music players);
- DISC:** DVDs, DivX/MP3/WMA files on discs, and audio CDs.
- 3. **SETTINGS**
Enter the settings menus.
- DISC MENU**
In **DISC** mode:
Enter or exit the disc menu.
- 4. **FAVORITE**
In **DISC** mode:
Program favorite chapters/tracks
- 5. **OK**
Navigation buttons
Press to navigate through menus.
 In **USB** mode:
Superscroll: In a long list of options, press and hold to start Superscroll. Release to jump to the first item starting with current alphabet/ number.
In **DISC** mode:
Select an album (for MP3/WMA CDs).
 In **FM RADIO** mode:
Press and hold to start the auto tuning to the next available station;
Press repeatedly for fine tuning.
- OK**
Confirm selection.
- 6. **HOME:** Return to Home screen (main menu).
 BACK: Go back to previous screen.
- 7. Search buttons on the play screen
In **USB/DISC** mode:
Press to skip to the previous/ next chapter/ track;
 Start/pause/resume play;
In **USB** mode: Start to play the entire file folder(SuperPlay™).
 Stop play.
 Mute/ unmute sound.
- NOW PLAYING**
Return to play screen.

8.	Alphanumeric buttons
	For text entry
	In FM RADIO mode: On the radio play screen, press and hold a numeric button to store current station in the location as a preset station.
	In USB mode: Quickjump: In a long list of options that are sorted in an alphabetical order, press once or repeatedly to select an alphabet, and jump to the first item that starts with the selected alphabet.
9.	a/A
	Press to switch between lower and upper cases; In FM RADIO mode, press in the list of presets to start editing station name.
	CLEAR
	Press to delete the previous entry; Press and hold to delete all entries.
10.	SUBTITLE
	In DISC mode: Select a subtitle language (for video discs only).
	AUDIO
	In DISC mode: Select stereo, mono-left, mono-right, or mix-mono channel (for VCD discs only); Select an audio language (for DVD and DivX discs only).
11.	SHUFFLE
	Activate/deactivate random order play.
	REPEAT
	Toggle through repeat play options.
	SOUND
	Select sound settings.
	REPEAT A-B
	In DISC mode: Repeat a specific section within a track/disc.
12.	ZOOM
	In DISC mode: Zoom in/out (for video discs and picture files on CDs).
	ANGLE
	In DISC mode: Select a camera angle (for video discs).
13.	+TVVOL —
	Increase/decrease the volume of a connected Philips TV.
	+VOL —
	Increase/decrease the volume of the unit.

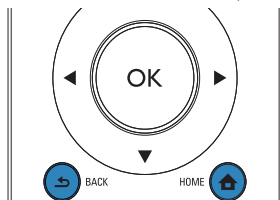
14.	SEARCH
	In USB mode: Press to start the search/browsing by alphanumeric entry. In DISC mode: During disc play, press to start the search by time, or chapter/track.
15.	SLEEP TIMER
	Set the sleep timer.
	CLOCK
	Display the clock time.
16.	BRIGHTNESS
	Select brightness options for the LCD display.

Home screen



From Home screen, you can select your desired music source, or enter **[Settings]** menu. To do so, do the following:

- 1 On the remote control, press the Source selector, or use the Navigation buttons and and **OK**.
- 2 To go back to previous screen, press **BACK**.
- 3 To return to Home screen, press **HOME**.



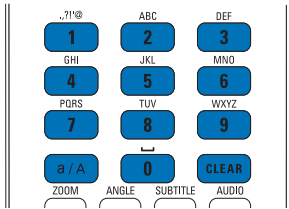
Text entry

To enter text and symbols, press corresponding alphanumeric buttons on the remote control.

- To enter letters/numbers/symbols corresponding to the same alphanumeric button, briefly and repeatedly press the button.

English		
abc...	ABC...	
1 1.,?!'@- :./"#\$%& () '*+<=>[\^`{ } ~	1 1.,?!'@- :./"#\$%& () '*+<=>[\^`{ } ~	
2 abc2	ABC2	
3 def3	DEF3	
4 ghi4	GHI4	
5 jkl5	JKL5	
6 mno6	MNO6	
7 pqr7	PQRS7	
8 tuv8	TUV8	
9 wxyz9	WXYZ9	
0 _0	_0	

- To enter symbols, press **[1]** repeatedly.
- To enter space, press **[0]**.
- To switch between lower and upper cases, press **[a/A]**.
- To delete previous character, press **[CLEAR]**. To delete all entries, press and hold **[CLEAR]**.



Tip

- For languages other than English, letters that an alphanumeric button corresponds to may vary.

Русский	
абв...	АБВ...
1 1.,?!'@- :./"#\$%& () '*+<=>[\^`{ } ~	1 1.,?!'@- :./"#\$%& () '*+<=>[\^`{ } ~
абвг2abc	АБВГ2ABC
дежз3def	ДЕЖЗ3DEF
ийкл4ghi	ИЙКЛ4GHI
мноп5jkl	МНОП5JKL
рсту6mno	РСТУ6MNO
фхцч7pqrs	ФХЦЧ7PQRS
шщъы8tuv	ШЩЪЫ8TUV
ьэюя9wxyz	ЬЭЮЯ9WXYZ
_0	_0

Other Languages	
abc...	ABC...
1 1.,?!'@- :./"#\$%& () '*+<=>[\^`{ } ~	1 1.,?!'@- :./"#\$%& () '*+<=>[\^`{ } ~
abc2áâãäåæ	ABC2ÁÁÁÁÁÁÆ
def3èéêë	DEF3ÉÉÉÉÉ
ghi4íîï	GHI4ÍÍÍÍÍ
jkl5	JKL5
mno6ñóôõöø	MNO6ÑÓÓÓÓ
pqr7ß	PQRS7ß
tuv8ùúû	TUV8ÚÚÚÚÚ
wxyz9	WXYZ9
_0	_0

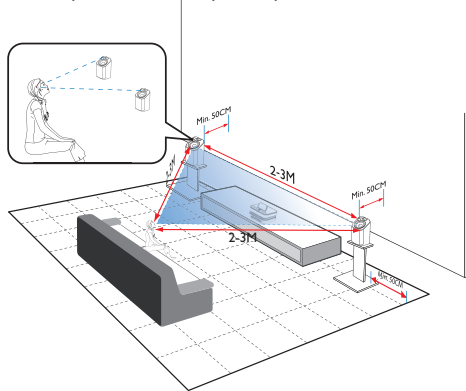
3 Prepare

Place the Soundsphere speakers

About Soundsphere speakers

The supplied Soundsphere speakers can produce full-frequency sounds throughout the area of coverage. Unlike conventional speakers, Soundsphere speakers are much less sensitive to exact positioning. The mid- and high-frequency sounds from Soundsphere speakers are retained, even if you move away from the Soundsphere speakers. Thus, the authentic sound experience can be extended to all sides of the speakers.

How to place the soundsphere speakers



For the best listening experience:

- Place the speakers with the tweeters at the ear height, and at least 50 cm away from the rear wall.
- Place the speakers on speaker stands to get the best result.

- Place the speakers 2 to 3 meters away from each other, with the two speakers and your preferred listening position forming an equilateral triangle.
- Place the speakers with the tweeters facing your preferred listening area.
- To keep the tweeters unobstructed, never place the speakers in between shelves.



Tip

- Alternatively, you can place the Soundsphere speakers on the floor or on top of shelves, though not preferable.
- By placing the speakers at least 50 cm away from the rear wall, you can make the bass tighter and improve your listening experience.

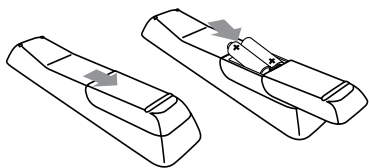
Install batteries into the remote control



Caution

- Risk of explosion! Keep batteries away from heat, sunshine or fire. Never discard batteries in fire.
- Risk of decreased battery life! Never mix different brands or types of batteries.
- Risk of product damage! When the remote control is not used for long periods, remove the batteries.

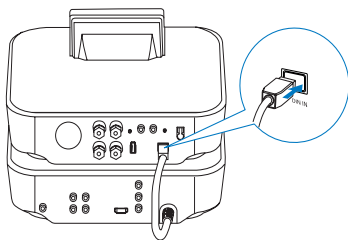
- ① Open the battery compartment.
- ② Insert 2 AAA R03 batteries with correct polarity (+/-) as indicated.
- ③ Close the battery compartment.



4 Connect

Connect the main unit and CD/DVD unit

- As shown, plug the cable into **DIN IN**.



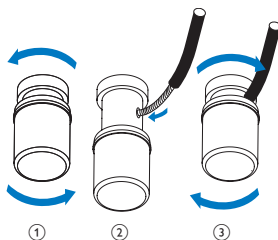
Connect speakers



Note

- Always connect the speakers before you connect MCD900 to an AC power outlet. By doing so, you can avoid the big noise that may be caused during speaker installation by the speaker wires on the metallic surface of MCD900.

- 1 On **MCD900**, ensure that you connect the left speaker to **LOUDSPEAKERS L+, L-** and right speaker to **LOUDSPEAKERS R+, R-**.
- 2 To connect the speakers,
 - As shown, unscrew to loosen the connectors;
 - Fully insert the ends of speaker wires, red end into the red connector, and silver end into the black connector;
 - Screw the connectors until the speaker wires are securely fastened.



Connect for disc play

For disc play, make audio/video connections.

Connect a TV

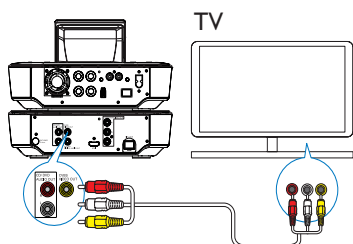
On **MCD900**, you can connect a TV through one of the two video jacks.

Select the video jack that your TV supports:

- Composite video (CVBS): for a standard TV;

- HDMI jack: for a high-definition TV compliant with HDMI (High Definition Multimedia Interface)/DVI (Digital Visual Interface), and HDCP (High-bandwidth Digital Contents Protection).

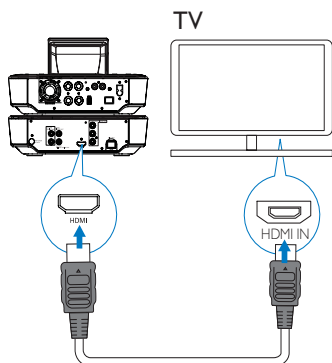
Using the CVBS jack



- As shown, plug the supplied composite audio/video cable into the corresponding sockets.

Using the HDMI jack (HDMI cable sold separately)

Use the HDMI jack to connect a high-definition TV (HDTV), which is equipped with HDMI (High Definition Multimedia Interface) or DVI (Digital Visual Interface), and compliant with HDCP (High-bandwidth Digital Contents Protection).



- As shown, connect an HDMI cable (not supplied) to:
 - the **HDMI** socket on this unit, and
 - the **HDMI** input socket on the TV.
- For TV/monitor with a DVI jack only, use a DVI-to-HDMI adapter.



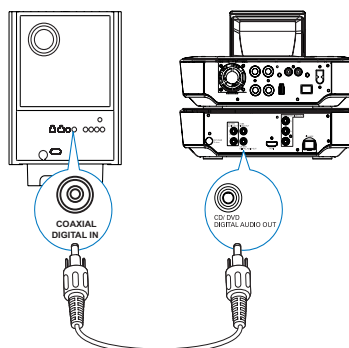
Tip

- As a compact audio/video interface, HDMI transmits uncompressed digital data. With the HDMI connection, high-definition video/audio contents can present optimum video and audio quality on a HDTV.

Play from another speaker system

To play from another speaker system, connect an digital audio cable (not supplied) to:

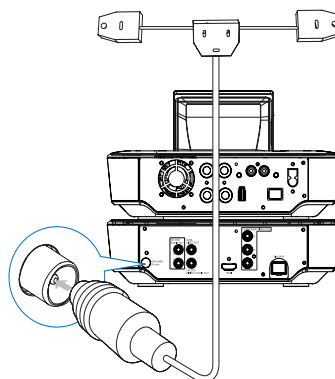
- the **CD/DVD DIGITAL AUDIO OUT** socket on **MCD900**;
- the digital audio input on an external speaker system.



Note

- Ensure that the external audio system is switched to the Aux-in mode, if you are playing sounds from the speaker system on an external audio system.

Connect the FM antenna



Note

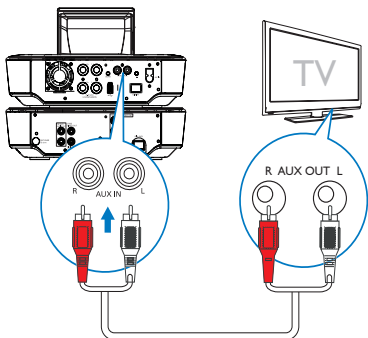
- Always plug in the FM antenna before tuning to an FM radio station.
- Connect the supplied FM T-type antenna to the **FM TUNER** socket on the unit;
- Stretch the antenna to its full length, and fix it on the wall.

Connect external audio devices

You can listen to an external audio device through the speakers on **MCD900**. To do so, do the following connections, and then, select the **AUX** mode on **MCD900**.

Connect audio cables (red/white - not supplied) to:

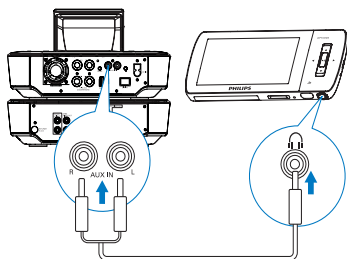
- the **AUX IN L / R** sockets on this unit, and
- the audio output sockets on the external audio device.



Or, to play from a portable media player with 3.5mm headphone jack

Connect a headphone to RCA cable (not supplied) to:

- the **AUX IN L / R** sockets on this unit, and
- the 3.5mm headphone jack on the portable media player.



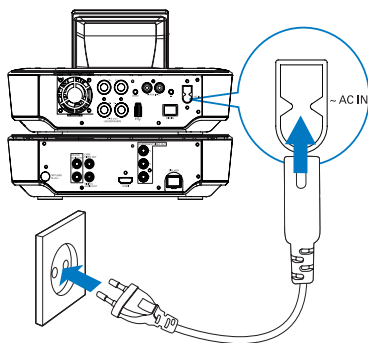
Turn on/off

Connect power supply



Warning

- Risk of product damage! Ensure that the power supply voltage corresponds to the voltage printed on the back or the underside of the product.






- Connect **MCD900** to the power supply.



Note

- The type plate information is located at the back or at the underside of the product.

Turn on/off

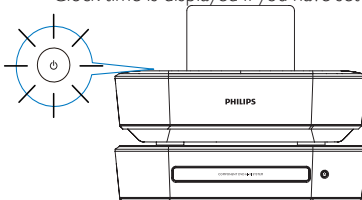
- Press  or a source selector to turn on the unit.
- To turn off the unit,
 - Press  to switch to active standby;
 - Or, press and hold  to switch to Eco standby (energy-saving mode).

Active standby

When in active standby, some functions of **MCD900** remain in the normal state of power consumption, e.g. clock display.

In active standby,

- The power indicator lights up red;
- Clock time is displayed if you have set clock.



Auto active standby

If no activity happens on **MCD900** for 10 minutes, **MCD900** can switch to active standby automatically.

Eco standby

Eco standby is an energy-saving mode. In Eco standby, all major functions are switched to a low-power state or off, e.g. micro-processor and display.

5 Play music CDs/ movie DVDs

! Caution

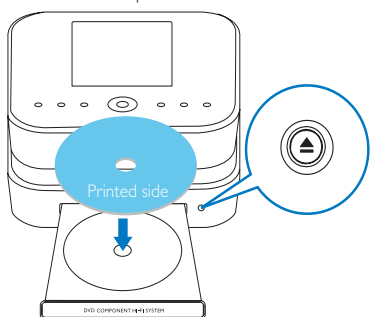
- Never look at the laser beam inside the unit.
- Risk of product damage! Never play discs with accessories such as disc stabilizer rings or disc treatment sheets.
- Never put any objects other than discs into the disc compartment.

≡ Note

- Ensure that you have made connections for disc play (see 'Connect for disc play' on page 11).
- For the supported disc formats, see 'Introduction' on page 6.

Basic operations

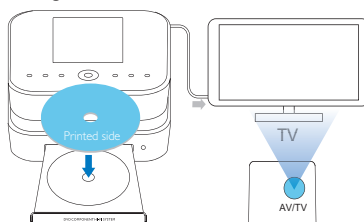
- 1 On MCD900, press .
↳ The disc tray opens.
- 2 Load a disc onto the tray, the printed side facing up. Press .
↳ Play starts automatically after disc reading is complete.



- 3 If necessary, press **DISC** on the remote control, and then, to start play.
- 4 During disc play,
 - Press repeatedly to select a track/ chapter. For WMA/MP3 files on a disc, press to select a file folder.
 - Press to search forward/backward.
 - Press to pause or resume.
 - Press to stop.

Use the disc menu

After loading a disc onto the tray, you can see the disc settings on the TV screen.



- 1 On MCD900, load a disc onto the tray.
- 2 Turn on the TV and switch to the correct video-in channel in one of the following ways:
 - On the remote control of your TV, press the AV/TV button repeatedly until you see the Philips screen, or the video disc screen.
 - Go to the lowest channel on your TV, then press the Channel Down button until you see the Philips screen, or the video disc screen.
 - Press the source button repeatedly on the remote control of your TV.

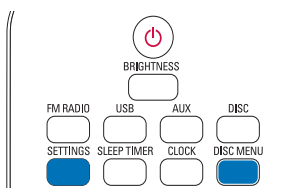
* Tip

- The video-in channel is between the lowest and highest channels and may be called FRONT, A/V IN, VIDEO etc. See the TV user manual on how to select the correct input on the TV.

Access the disc menu

To access the menu manually

- In the **DISC** mode, press **DISC MENU** or **SETTINGS** on the remote control.



Play movie discs(DVD/DivX/VCD)

Pause/Resume/Stop

To pause

- During disc play, press to pause.
↳ The TV screen shows the scenes where you stop play.
- Or, during DVD play, press .
↳ The TV screen shows the Philips screen.

To resume

- Press **▶||**.
↳ The disc play resumes from the last stop point.

To stop

- Press **■** again.

Search**Fast search forward/backward**

- 1 During play, press and hold **◀▶** to select a search speed.
 - To resume play at normal speed, press **▶||**.

Search by time or chapter/track

- 1 During disc play, press **SEARCH** until a time field or chapter/track field is displayed.
 - For the time field, enter the play position in hours, minutes and seconds.
 - For the chapter/track field, enter the chapter/track.
↳ Play starts automatically at your selected point.

Select languages for disc play**Select an audio language**

You can select an audio language on DVDs or DivX discs.

- 1 During disc play, press **AUDIO**.
↳ The language options appear. If the selected audio channels is unavailable, the default disc audio channel is used.

**Note**

- For some DVDs, the language can only be changed from the disc menu.

Select a subtitle language

You can select a subtitle language on DVDs.

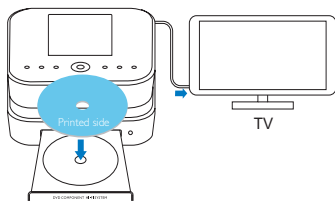
- During disc play, press **SUBTITLE**.

**Note**

- For some DVDs, the language can only be changed from the disc menu.

Program favorite chapters/tracks

You can play certain chapters/tracks on a disc. Program the chapters/tracks as desired on the TV screen.



- 1 In the **DISC** mode, ensure that the disc play stops.
 - 2 Press **FAVORITE** on the remote control.
↳ On the TV screen, you can see a menu for you to program desired chapters/tracks.
 - 3 Use the remote control to enter the desired chapters/tracks.
- To play the program**
- On the TV screen, select [Start].
- To erase the program**
- Press **■**.
 - Or, remove the disc from the disc tray.

Select play options**Select Repeat/Shuffle options**

During disc play, you can repeatedly play a chapter/track, or a file or files in a folder. You can also play tracks or files in a folder in a random order.

To turn on or off the repeat/shuffle options

- Press **REPEAT** or/and **SHUFFLE** repeatedly.

To repeatedly play a section in a disc

- 1 During music or video play, press **REPEAT A-B** at the start point.
- 2 Press **REPEAT A-B** at the end point.
↳ The selected section starts to play repeatedly.
↳ To cancel repeat play, press **REPEAT A-B** again.

**Note**

- The section A and B can be set only within the same track/title.

Zoom in/out image

- 1 During video/picture play, press **ZOOM** repeatedly to zoom in/out the image.
 - When the image is zoomed in, you can press **▲▼/◀▶** to pan through the image.

Change a camera angle

Some DVDs contain alternate scenes, such as scenes recorded from different camera angles. For such DVDs, you can select from the available alternate scenes.

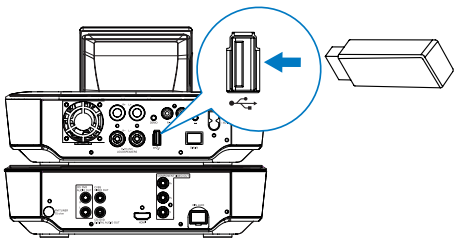
- 1 During DVD play, press **ANGLE** repeatedly to switch between camera angles.

6 Play from a USB flash device

Connect a USB flash device

On **MCD900**, you can play music/photos stored on a USB flash device. To do so, do the following:

- Connect the USB flash device to the  socket on **MCD900**;
- Select the **[USB]** mode on **MCD900**.

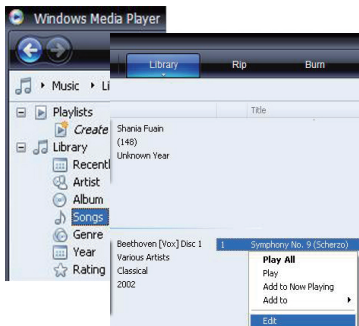


Library on the USB flash device

Organize files on the USB flash device

- Audio files:
If the files contain file information (meta tag or ID3 tag), the files can be sorted automatically by the file information, like Artist, Album, Genre, and others.









Launch media management software to check or edit the file information. For example, click as shown in **Windows Media Player 11**. Select the desired song, and then, double click it to edit.



If necessary, you can also organize audio files in different folders as desired.

- Picture files:
Organize files in different folders as desired. The folders are sorted in an alphabetical order.


Play from the USB flash device

- 1 On **MCD900**, ensure that the USB mass storage device is properly connected.
 - 2 On the remote control, press **USB**.
 - The file sorting process may take some time. During file sorting, the file folders are displayed.
 - Audio files are displayed under different categories (e.g. Artist, Album, Genre), if meta/ID3 tags are edited for the files.
 - Picture files are also organized.
 - 3 Select your desired track or album.
 - 4 Press  to start play.
 - Play starts from the beginning of the album, if you press  on an album.
 - Play screen appears when play starts.
 - 5 To stop play, press .
- Play photos**
- Press   to rotate the picture;
 - Press   to move to previous/next picture;
 - Press  to start playing all pictures in slideshow mode.





Search for music/pictures

To navigate through menus during music play, do the following:

- 1 On the remote control, press  and then, use the Navigation buttons.
- 2 To return to Play screen, press **NOW PLAYING**.







Tip

- On Play screen, you can also press  and  repeatedly to select songs.

In a list of options, you can do one of the following to search for what you need:



Tip

- When doing searching in the following ways, ensure that **MCD900** is in the mode of **USB**.
- Use the navigation keys , , , .
- Start quick search by using the **alphanumeric search**, **Superscroll**, and **Quickjump**.

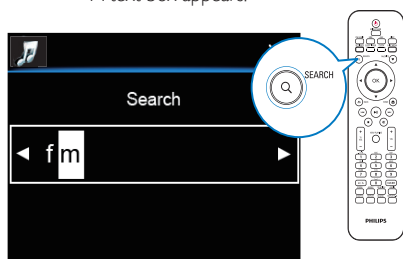
Note

- **Alphanumeric search, Superscroll** and **Quickjump** are available only when you enter a long sorted list of options (excluding the home screen and lists of menus).

Alphanumeric search

In a long list of options, start alphanumeric search by entering characters that an item starts with or contains.

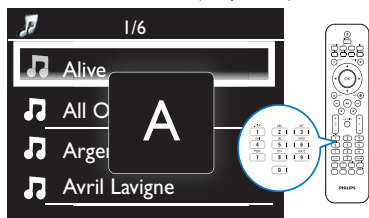
- 1 Press **SEARCH** on the remote control, if necessary.
↳ A text box appears.



- 2 Enter characters by using the remote control (see 'Text entry' on page 9).
- 3 Press **OK** after completing text entry.
↳ Search starts.
↳ You can find a list of items that contain the characters.
↳ You can find a close match if there is no item that contains the character.

Quickjump

You can also use **Quickjump** for alphanumeric search.



To reach the first item that starts with a certain letter

- On the button corresponding to the letter, press once or repeatedly until the letter appears.

To reach the first item that starts with the next letter

- Press **▶**.

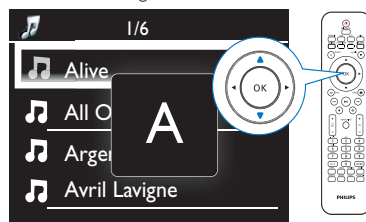
To reach the first item that starts with the previous letter

- Press **◀**.

Superscroll

In a long list of options, **Superscroll** allows you to start a search in an alphabetical order. You can quickly reach the first item that starts with the selected alphabet.

- 1 Press and hold **▲/▼** to start Superscroll.
↳ A pop-up text box appears. Letters are displayed repeatedly in an alphabetical order, starting from current letter.



- 2 Release **▲/▼** when you reach the desired letter.
↳ You reach the first item that starts with the letter.

7 Play FM radio

Tune to FM radio stations

Note

- Before you tune to FM radio stations, ensure that you have properly installed the supplied FM antenna (see 'Connect the FM antenna' on page 12).



Autostore

- 1 On MCD900, press **FM RADIO** on the remote control.
• Or, from Home screen, select **[FM radio]**.
- 2 The first time you tune to FM radio stations, select **[Auto store]** in **[FM radio]**.
↳ MCD900 starts to search for available stations automatically.
↳ Radio play starts and a maximum of 60 stations are stored as presets when the auto tune is complete.
↳ The preset stations are listed in the order of reception strength, with the RDS stations at the top.
- 3 To select a preset station, go to **[Presets]**.

Manual tuning

- 1 In **[FM radio]**, select **[Manual tuning]**.
- 2 Press and hold **◀/▶** to start auto tuning.

- You tune to the next available station with sufficient reception.

3 Press   repeatedly for fine tuning.





Edit preset stations

Store current station to a location


When listening to a radio station, you can store current station to a desired location (0-9) in the preset list. The numeric buttons (0-9) on the remote control correspond to the locations (0-9) in the preset list.

- 1 Tune to your desired station.
- 2 On the radio play screen, press and hold a numeric button.
 - If necessary, press **NOW PLAYING** to return to the radio play screen.
 - Current station is stored to the location.

Edit station information

- 1 In the **FM RADIO** mode, go to **[Presets]**.
- 2 In the list of preset stations,
 - Select the station to be edited;
 - Press **a/A** to start editing;
 - Press   to select the entry location; press   repeatedly to select desired letters.
- 3 Press **OK** to confirm. Press **BACK** to discard the changes.

Listen to FM radio

- 1 On MCD900, press **FM RADIO** on the remote control.
 - Or, from Home screen, select **[FM radio]**.
- 2 Tune to your desired station (see 'Tune to FM radio stations' on page 17).
 - **To select a preset station:**
Go to **[FM radio] > [Presets]**;
Or, press the corresponding numeric button on the radio play screen (for the first 10 preset stations only).
- 3 To mute/unmute the radio play
 - Press .

RDS (Radio Data System)

RDS (Radio Data System) is a service that allows FM stations to show additional information.

During Autostore, RDS stations are automatically stored at the top of the list of preset stations.

When tuning to an RDS station, you can see the following information on the screen:

- Station name;
- Program type, such as news, sports, and pop music;
- Frequency;
- Scrolling text (RDS text), if available.

Use the RDS for clock setting



Note

- When you use an RDS station for clock setting, ensure that the RDS station broadcasts time signals.

- 1 From Home screen, select **[Settings] > [Clock settings] > [Date and time]**.
 - To enter **[Settings]**, you can also press **SETTINGS** on the remote control.
- 2 In **[Date and time]**, select **[Current date and time] > [Automatic (RDS)]**.
 - The unit searches for the first preset station automatically.
 - The time is set according to time signals from the station.
- 3 To use another RDS station for clock setting, tune to the RDS station immediately.



Tip

- To use an RDS station for regular clock setting, store the station as the first preset station.

8 Play from an external audio device (AUX)

With the **AUX IN L / R** socket and **AUX** mode, MCD900 allows you to play an external audio device (e.g. a portable media player) through the speakers of MCD900.

Play from an external audio device

- 1 Ensure that the external audio device is properly connected to MCD900 (see 'Connect external audio devices' on page 13).
- 2 On MCD900, select the **AUX** mode.
 - From Home screen, select **[AUX]**.
 - Or, press **AUX** on the remote control.
- 3 On the external audio device, start music play.
 - For the music play, you can use the sound settings on MCD900.

9 Settings

Play modes

When playing music, you can choose to play repeatedly, play in random order, or play one by one. Select a play mode as desired.

To select a play mode for music play

Before or during music play,

- From Home screen, go to **[Settings] > [Play mode]**; Or,
- Press **REPEAT** or **SHUFFLE** repeatedly on the remote control.
 - ↳ - Play all songs in current folder repeatedly;
 - ↳ - Play current song repeatedly;
 - ↳ - Play all songs in current folder randomly.

Sound settings

On MCD900, you can select different sound settings in **[Settings] > [Sound settings]**.

- 1 From Home screen, go to **[Settings] > [Sound settings]**.
 - Or, press **SETTINGS** on the remote control to enter **[Settings]**.
- 2 Select the option. Press **OK** to turn it on or off.
Or,
On the remote control, press **SOUND** to enter the menu of sound settings.

Bass and treble

Use **[Bass / Treble]** to adjust the low (bass) or high (treble) range of musical notes.

- 1 From Home screen, go to **[Settings] > [Sound settings] > [Bass / Treble]**.
 - Or, press **SOUND** on the remote control to enter the menu of sound settings.
- 2 Press / repeatedly to increase/decrease the level.
 - Press **CLEAR** to select neutral level.

Full sound

[FullSound] restores the sonic details that music compression loses (e.g. MP3, WMA).

Turn on or off **[FullSound]** in **[Settings] > [Sound settings]**.

Direct Source

With **[Direct source]**, you can turn off the settings of sound effects on MCD900, including **[FullSound]** and **[Bass / Treble]**.

Thus, music plays in an original way, without the sound effects from MCD900.

- Turn on or off **[Direct source]** in **[Settings] > [Sound settings]**.



Tip

- When **[Direct source]** is on, you can still adjust the volume and **[Balance]**.
- The sound effect settings are retained and enabled when **[Direct source]** is off.

Audio balance

With **[Balance]**, you can improve listening experience by adjusting difference between the left and right audio channels.

- 1 From Home screen, go to **[Settings] > [Sound settings] > [Balance]**.
 - Or, press **SOUND** on the remote control to enter the menu of sound settings.
- 2 Press / repeatedly to increase/decrease the output from left/right audio channels.
 - Press **CLEAR** for equal output from left/right audio channels.

Set the volume from the external audio device

With **[AUX in volume]**, you can set the volume from the connected external device (see 'Connect external audio devices' on page 13).

- 1 From Home screen, go to **[Settings] > [Sound settings]**.
 - Or, press **SOUND** on the remote control to enter the menu of sound settings.
- 2 Go to **[AUX in volume]**. Select the desired volume level.

Display settings

Brightness

On MCD900, you can adjust the brightness of the display. As desired, the display lights up, dims or turns off when MCD900 is turned on or switched to active standby.

- In **[Settings] > [Display settings] > [Brightness when on]** or **[Brightness when standby]**, select an option and press **OK**.
- Or, on the remote control, press **BRIGHTNESS** to select the brightness options for the display.

Wallpaper

For menus on MCD900, you can set the background display (wallpaper).

To set wallpaper

- 1 On MCD900, select and play a photo.

- 2 Press **SETTINGS** on the remote control to select [Settings] > [Display settings] > [Wallpaper].
- 3 In [Wallpaper], select [Current picture].
↳ Current picture is set as wallpaper.

Screensaver

On MCD900, the screensaver is turned on when MCD900 is switched to active standby. When turned on, the selected screensaver appears. The clock is shown on the lower right corner of the screen.

By default, clock display appears as the screensaver.

To set screensaver

- 1 On MCD900, select and play a picture.
- 2 Press **SETTINGS** on the remote control to select [Settings] > [Display settings] > [Screen saver].
- 3 In [Screen saver], select [Current picture].
↳ Current picture is set as screensaver.

Slideshow settings

When in the slideshow mode, you can view pictures one by one.

To select a play mode for slideshow

- 1 From the home screen, go to [Settings] > [Slideshow settings].
Or, press **SETTINGS** on the remote control to enter [Settings].
- 2 Select one of the following play modes. Press **OK** to turn it on or off.
 - ↳ [Repeat]: Play all pictures repeatedly;
 - ↳ [Shuffle]: Play all pictures randomly.

To set the play time of each picture

- 1 From Home screen, go to [Settings] > [Slideshow settings] > [Time per slide].
 - Or, press **SETTINGS** on the remote control to enter [Settings].
- 2 In [Time per slide], select the desired time duration.

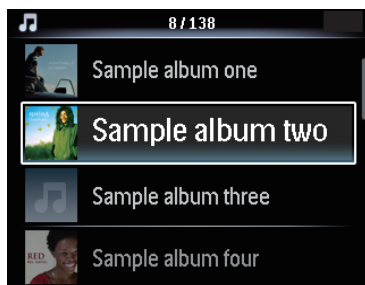
Album art (in the USB mode)

Album art (the picture of CD/album cover) is sometimes available for music downloads. With some media management software, album art can be inserted for the songs. By turning [Album art] on or off, you can choose whether to show the picture of CD/album cover for corresponding songs.

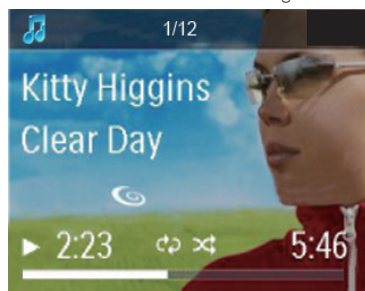
To turn on [Album art]

- 1 From the home screen, go to [Settings] > [Album art].
Or, press **SETTINGS** on the remote control to enter [Settings].
- 2 Select [Album art]. Press **OK** to turn it on or off. If [Album art] is on,

- ↳ In the list of songs, the album art appears as thumbnail along with the corresponding song.



- ↳ During the song play, the album art is displayed in full screen as the background.



Clicker sound

MCD900 can give you an audible feedback (clicker sound) every time you press a button on the remote control.


You can turn the clicker sound on or off in [Settings] > [Clicker sound].

Clock settings

Alarm

Set the alarm

- 1 Ensure that you have set the clock (see 'Date and time' on page 21).
- 2 From Home screen, go to [Settings] > [Clock settings] > [Alarm].
- 3 To set the source of alarm sound,
 - Select [Music]:
↳ At the set alarm time, last played song sounds, or you tune to the last played FM radio station.
 - Select [Buzzer]:
↳ At the set alarm time, the buzzer sounds.
- 4 To set the alarm time,

- Press and hold ▲/▼, or press ▲/▼ repeatedly until you reach the desired digits. Press **OK** to confirm.
 - Or, enter the desired digits by using the alphanumeric buttons on the remote control.
- ↳ The alarm icon  appears on the screen.

To play a song or FM radio station as the next alarm sound

- 1 Ensure that you have selected [Music] in the Step 3 above;
- 2 Before you turn off MCD900, or switch MCD900 to active standby,
 - Go to **[USB]**, and select and play the desired song;
 - Or, go to **[FM radio]**, and tune to the desired station.

Note

- Keep the USB flash device connected to MCD900, if you select a song as the alarm sound.
- Tune to an FM radio station that is in service at the set alarm time, if you select FM radio as the alarm sound.

Use the alarm

At the set alarm time, music/FM radio plays as desired, or the buzzer sounds.

Note



- The alarm sounds even if you have switched MCD900 to active standby or Eco standby.
- The buzzer sounds instead, if MCD900 fails to detect a USB flash device.
- MCD900 is unmuted if it has been muted.
- The alarm sounds in a higher volume if the volume level is lower than minimum.

To snooze the alarm

- Press any button on the unit or the remote control (except for the volume buttons).

↳ The alarm sounds again 15 minutes later. The alarm icon remains.

To stop the alarm

- Press and hold  or .

↳ The alarm is stopped. The alarm icon disappears.

↳ The alarm sounds again next day.

To turn off the alarm

- Go to **[Settings] > [Clock settings] > [Alarm]**. Select **[Alarm off]** and press **OK** on the remote control.

To set the time duration

- 1 From the home screen, go to **[Settings] > [Clock settings] > [Sleep timer]**.
 - Or, press **SETTINGS** on the remote control to enter **[Settings]**.
- 2 Select an option. Press **OK** to turn it on.

Date and time

The date and time can be set automatically or manually.

Automatic setting

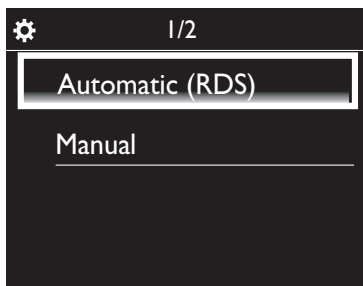
For automatic clock setting, use the time signal from FM RDS radio.

Through time signals from FM RDS radio






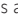
- 1 On the unit, turn on the FM radio, if necessary.
 - Ensure that the FM antenna is connected properly (see 'Connect the FM antenna' on page 12).
- 2 On the first location for preset stations, store an FM RDS station that transmits time signals.
- 3 From Home screen, select **[Settings] > [Clock settings] > [Date and time]**.
- 4 In **[Date and time]**, select **[Current date and time] > [Automatic (RDS)]**.

↳ The unit searches for the first preset station automatically.

↳ The time is set according to time signals from the station.



Manual setting

- 1 Turn on the unit, if necessary.
- 2 From Home screen, select **[Settings] > [Clock settings] > [Date and time]**.
- 3 In **[Date and time]**, select **[Current date and time] > [Manual]**.
- 4 To enter date and time,
 - Press  or  to select the entry location;
 - Use the alphanumeric buttons to enter desired digits;
 - Press **OK** to confirm.
 - You can also press  or  repeatedly, or press and hold  or  until the desired digit appears.

Set date/time format

Select how date and time are displayed in the clock.

Sleep timer

With the sleep timer, you can have MCD900 turned off automatically after the set timer duration.


- 1 Follow Step 1-2 under "Manual setting".
- 2 In [Date and time], go to [Time format] or [Date format] to select options.

Language

After the first-time setup, you can change the language selection in [Settings] > [Language].

Demo mode

You can view the demo to learn major functions on MCD900.

- 1 From Home screen, go to [Settings] > [Demo mode].
 - ↳ Demo play starts.
- 2 To exit the demo play, press .
 - ↳ The unit is switched to Eco standby.

Restore factory settings

You can restore MCD900 to factory settings. All your settings are removed, including the settings of network, sound, display, clock, alarm and language.

- 1 Go to [Settings] > [Restore factory settings].
- 2 As prompted, select [Yes].
 - ↳ The unit is turned off.
 - ↳ The unit is turned on again automatically when the factory settings are restored.
 - ↳ Start the first-time setup.

10 Maintenance

This chapter tells you how to care for MCD900.

Cleaning



Note

- Avoid moisture and abrasion.

- 1 Clean MCD900 only with a soft dry cloth.

11 Technical data

General

AC Power (Main unit)

220-240V, ~ 50-60Hz (for /12, /05 /79)
120V, ~ 60Hz (for /37)

DC Power (DVD unit)

DIN connector (Output provided by Main unit)

DC Power (USB flash device unit)

5V USB power, 900mA (Provided by Main unit)¹

Dimensions

Main unit: 251 x 251 x 133mm (including LCD)

DVD unit: 251 x 251 x 69mm

Speaker box: 175 x 202 x 354mm

Weight (net)

12.50kg (all items)

Power consumption

Active (On)

< 45W (according to IEC60065)

(Active) Standby

< 11W (HDD-spun down)

ECO (Passive) Standby

< 0.8W

Audio inputs

Aux in (Line in)

2x Cinch

Input sensitivity

0.5V: Position High

0.8V: Position Medium

1.55V: Position Low

Input impedance

> 10kΩ (Ohms)

Audio outputs

Headphones

1 x 3.5mm jack, 30 – 18000Hz, 16 - 150Ω (Ohms)

Signal to noise ratio (Headphones)

typically 90dBA (IEC)

Distortion (Headphones)

< 0.10%

Audio / Video outputs (only provide output during disc playback)

SPDIF

1 x Cinch (Coax), 0.5V, 75 Ohm

Line out

2 x Cinch, 20 – 20000Hz, 1.5V

Signal to noise ratio (Line out)

typically 98dBA (IEC)

CVBS

1 x Cinch, 1Vpp, 75 Ohm

Composite Video output (PbPrY)

3 x Cinch, 75 Ohm, Pb/Pr: 0.7Vpp, Y: 1Vpp

HDMI
480i, 480p, 576i, 576p, 1080i, 1080p
Video system
PAL / NTSC
Video format
4:3 / 16:9
Audio amplifier (Digital)
Output power
2 x 50W (RMS) (= total power 100W)
Frequency response
20Hz to 20000Hz (±0.5dB)
Signal to noise ratio
typically 92dB
Speakers
Power handling
50W (RMS) / 60W (MPO)
Impedance
8Ω (Ohms)
Sensitivity
86dB/ 1m/ W
Dimensions
Woofer: 5.00 inches Tweeter: 1.50 inches
Frequency response
45 to 20000Hz
Sound features
FullSound®
Yes (on/ off)
Bass/ Treble control
+/- 10 steps
Balance control
+/- 10 steps
Direct Source (Flat)
Yes (on/ off)
Decoding capabilities (excluding the disc player)
MP3
8 - 320kbps (CBR / VBR)
WMA
32 - 192kbps (CBR / VBR)
WMT DRM - ND (WMA DRM - 10)
No

AAC (M4A)
16 - 320kbps (CBR / VBR)
PCM/ WAV
1x (1.4Mbps)
FLAC
Yes, supported
Ogg Vorbis
Yes, supported
eACC
Yes, supported
JPEG
Yes, supported (Maximum size: 7MB)
Playlist support (excluding the disc player)
*.m3u, *.wpl
Yes
FM Tuner
Frequency range
87.50 to 108.00MHz
No. of Presets
60
Signal noise ratio (Mono)
≥ 62dB
Tuning grid
50kHz
RDS
Yes; PTY, PS, Text including RDS clock setting
Antenna connector
IEC (75 Ohm)
DISC player
Supported discs
DVD, VCD, SVCD, DVD+RW, DVD-RW, DVD+R, DVD-R, Picture (JPEG) CD, DivX (Ultra) Disc MP3 / WMA CDR / CDRW, CD (CDDA)
Disc size support
8cm/ 12cm
Video decoding
MPEG 1, MPEG 2, DivX, JPEG
Audio decoding
MP3: 112 to 320kbps (Sampling rate: 32,44,1,48kHz) WMA: 48 to 192kbps (Sampling rate: 44.1, 48kHz)
HDMI Audio support
Yes

USB

USB port type

Type A, Host

Supported media

FAT, FAT-32, NTFS

Supported class

MSC only (no MTP support)

Multi-partition support

No, only first readable partition

Database support

Up to 40000 songs

Display/Clock**Resolution**

Dotmatrix, 320 x 240 dots (QVGA), Color TFT

Size

3.5 inches

Backlight

Can be turned on/ off and can be dimmed

Clock/ Date display

Yes

Wallpaper/ Screensaver

Yes

Automatic time setting via RDS

Yes, enabled

Sleep timer

Yes

Internal (key) clicker

Yes

**Note**

- Specifications and external appearance are subject to changes without notice.

12 Troubleshooting

**Caution**

- Never remove the casing of this unit.

To keep the warranty valid, never try to repair the system yourself.

If you encounter problems when using this unit, check the following points before requesting service.

If the problem remains unsolved, go to the Philips web site (www.philips.com/support). When you contact Philips, ensure that your unit is nearby and the model number and serial number are available.

Remote control does not work

- Before pressing any function button, first select the correct source with the remote control instead of the main unit.
- Reduce the distance between the remote control and the apparatus.
- Insert the battery with its polarities (+/- signs) aligned as indicated.
- Replace the battery.
- Aim the remote control directly at the sensor on the front of the apparatus.

Poor radio reception

- Increase the distance between the apparatus and your TV or VCR.
- Fully extend the FM antenna.
- Connect an outdoor FM antenna instead.

Audio or subtitle languages cannot be set

- The disc is not recorded with sound or subtitles in multiple languages.
- The audio or subtitle language setting is prohibited on the disc.

Cannot display some files in a USB mass storage device

- The number of folders or files in the USB mass storage device has exceeded the limit.
- The formats of these files are not supported.

Written Offer

Philips Electronics Hong Kong Ltd. hereby offers to deliver, upon request, a copy of the corresponding source code for the open source software packages used in this product for which such offer is requested by the respective licensees. This offer is valid up to three years after product purchase. To obtain source code, please contact open.source@philips.com. If you prefer not to use email or if you do not receive confirmation receipt within a week after mailing to this email address, please write to Open Source Team, Philips Intellectual Property & Standards, P.O. Box 220, 5600 AE Eindhoven, The Netherlands. If you do not receive timely confirmation of your letter, please email to the email address above.

This product uses the following open source software:

uCLinux for Blackfin 2009R1 Release <<http://blackfin.uclinux.org/>>, licensed under GPLv2, BusyBox R1.13.4 <<http://www.busybox.net/>>, licensed under GPLv2, Samba r3.0.25a <<http://samba.org/samba/>>, licensed under GPLv2, Wireless Tools for Linux v29 <http://www.hpl.hp.com/personal/Jean_Tourrilhes/Linux/Tools.html>, licensed under GPLv2, NTFS-3G driver r2009.11.14 <<http://www.tuxera.com/community/>>, licensed under GPLv2, Das U-Boot r1.1.6 <<http://www.denx.de/wiki/U-Boot>>, with exclusions for user programs.

NOTE! This copyright does *not* cover the so-called "standalone" applications that use U-Boot services by means of the jump table provided by U-Boot exactly for this purpose - this is merely considered normal use of U-Boot, and does *not* fall under the heading of "derived work".

The header files "include/image.h" and "include/asm-*/u-boot.h" define interfaces to U-Boot. Including these (unmodified) header files in another file is considered normal use of U-Boot, and does *not* fall under the heading of "derived work".

Also note that the GPL below is copyrighted by the Free Software Foundation, but the instance of code that it refers to (the U-Boot source code) is copyrighted by me and others who actually wrote it. --Wolfgang Denk

Linux kernel release 2.6.xx <<http://kernel.org/>>, licensed under GPLv2 with exclusions for user programs.

NOTE! This copyright does *not* cover user programs that use kernel services by normal system calls - this is merely considered normal use of the kernel, and does *not* fall under the heading of "derived work". Also note that the GPL below is copyrighted by the Free Software Foundation, but the instance of code that it refers to (the Linux kernel) is copyrighted by me and others who actually wrote it.

Also note that the only valid version of the GPL as far as the kernel is concerned is this particular version of the license (ie v2, not v2.2 or v3.x or whatever), unless explicitly otherwise stated.

Linus Torvalds

GPL V2

GNU GENERAL PUBLIC LICENSE Version 2, June 1991 Copyright (C) 1989, 1991 Free Software Foundation, Inc. 51 Franklin St, Fifth Floor, Boston, MA 02110-1301 USA Everyone is permitted to copy and distribute verbatim copies of this license document, but changing it is not allowed.

Preamble

The licenses for most software are designed to take away your freedom to share and change it. By contrast, the GNU General Public License is intended to guarantee your freedom to share and change free software--to make sure the software is free for all its users. This General Public License applies to most of the Free Software Foundation's software and to any other program whose authors commit to using it. (Some other Free Software Foundation software is covered by the GNU Library General Public License instead.) You can apply it to your programs, too. When we speak of free software, we are referring to freedom, not price. Our General Public Licenses are designed to make sure that you have the freedom to distribute copies of free software (and charge for this service if you wish), that you receive source code or can get it if you want it, that you can change the software or use pieces of it in new free programs; and that you know you can do these things. To protect your rights, we need to make restrictions that forbid anyone to deny you these rights or to ask you to surrender the rights. These restrictions translate to certain responsibilities for you if you distribute copies of the software, or if you modify it.

For example, if you distribute copies of such a program, whether gratis or for a fee, you must give the recipients all the rights that you have. You must make sure that they, too, receive or can get the source code. And you must show them these terms so they know their rights.

We protect your rights with two steps: (1) copyright the software, and (2) offer you this license which gives you legal permission to copy, distribute and/or modify the software. Also, for each author's protection and ours, we want to make certain that everyone understands that there is no warranty for this free software. If the software is modified by someone else and passed on, we want its recipients to know that what they have is not the original, so that any problems introduced by others will not reflect on the original authors' reputations.

Finally, any free program is threatened constantly by software patents. We wish to avoid the danger that redistributors of a free program will individually obtain patent licenses, in effect making the program proprietary. To prevent this, we have made it clear that any patent must be licensed for everyone's free use or not licensed at all. The precise terms and conditions for copying, distribution and modification follow.

GNU GENERAL PUBLIC LICENSE TERMS AND CONDITIONS FOR COPYING, DISTRIBUTION AND MODIFICATION

0. This License applies to any program or other work which contains a notice placed by the copyright holder saying it may be distributed under the terms of this General Public License. The "Program", below, refers to any such program or work, and a "work based on the Program" means either the Program or any derivative work under copyright law: that is to say, a work containing the Program or a portion of it, either verbatim or with modifications and/or translated into another language. (Hereinafter, translation is included without limitation in the term "modification".) Each licensee is addressed as "you". Activities other than copying, distribution and modification are not covered by this License; they are outside its scope. The act of running the Program is not restricted, and the output from the Program is covered only if its contents constitute a work based on the Program (independent of having been made by running the Program). Whether that is true depends on what the Program does.

1. You may copy and distribute verbatim copies of the Program's source code as you receive it, in any medium, provided that you conspicuously and appropriately publish on each copy an appropriate copyright notice and disclaimer of warranty; keep intact all the notices that refer to this License and to the absence of any warranty; and give any other recipients of the Program a copy of this License along with the Program. You may charge a fee for the physical act of transferring a copy, and you may at your option offer warranty protection in exchange for a fee.

2. You may modify your copy or copies of the Program or any portion of it, thus forming a work based on the Program, and copy and distribute such modifications or work under the terms of Section 1 above, provided that you also meet all of these conditions:

a) You must cause the modified files to carry prominent notices stating that you changed the files and the date of any change.
b) You must cause any work that you distribute or publish, that in whole or in part contains or is derived from the Program or any part thereof, to be licensed as a whole at no charge to all third parties under the terms of this License.

c) If the modified program normally reads commands interactively when run, you must cause it, when started running for such interactive use in the most ordinary way, to print or display an announcement including an appropriate copyright notice and a notice that there is no warranty (or else, saying that you provide a warranty) and that users may redistribute the program under these conditions, and telling the user how to view a copy of this License. (Exception: if the Program itself is interactive but does not normally print such an announcement, your work based on the Program is not required to print an announcement.)

These requirements apply to the modified work as a whole. If identifiable sections of that work are not derived from the Program, and can be reasonably considered independent and separate works in themselves, then this License, and its terms, do not apply to those sections when you distribute them as separate works. But when you distribute the same sections as part of a whole which is a work based on the Program, the distribution of the whole must be on the terms of this License, whose permissions for other licensees extend to the entire whole, and thus to each and every part regardless of who wrote it. Thus, it is not the intent of this section to claim rights or contest your rights to work written entirely by you; rather, the intent is to exercise the right to control the distribution of derivative or collective works based on the Program. In addition, mere aggregation of another work not based on the Program with the Program (or with a work based on the Program) on a volume of a storage or distribution medium does not bring the other work under the scope of this License.

3. You may copy and distribute the Program (or a work based on it, under Section 2) in object code or executable form under the terms of Sections 1 and 2 above provided that you also do one of the following:

a) Accompany it with the complete corresponding machine-readable source code, which must be distributed under the terms of Sections 1 and 2 above on a medium customarily used for software interchange; or,

b) Accompany it with a written offer, valid for at least three years, to give any third party, for a charge no more than your cost of physically performing source distribution, a complete machine-readable copy of the corresponding source code, to be distributed under the terms of Sections 1 and 2 above on a medium customarily used for software interchange; or,

c) Accompany it with the information you received as to the offer to distribute corresponding source code. (This alternative is allowed only for noncommercial distribution and only if you received the program in object code or executable form with such an offer; in accord with Subsection b above.) The source code for a work means the preferred form of the work for making modifications to it. For an executable work, complete source code means all the source code for all modules it contains, plus any associated interface definition files, plus the scripts used to control compilation and installation of the executable. However, as a special exception, the source code distributed need not include anything that is normally distributed (in either source or binary form) with the major components (compiler, kernel, and so on) of the operating system on which the executable runs, unless that component itself accompanies the executable. If distribution of executable or object code is made by offering access to copy from a designated place, then offering equivalent access to copy the source code from the same place counts as distribution of the source code, even though third parties are not compelled to copy the source along with the object code.

4. You may not copy, modify, sublicense, or distribute the Program except as expressly provided under this License. Any attempt otherwise to copy, modify, sublicense or distribute the Program is void, and will automatically terminate your rights under this License. However, parties who have received copies, or rights, from you under this License will not have their licenses terminated so long as such parties remain in full compliance.

5. You are not required to accept this License, since you have not signed it. However, nothing else grants you permission to modify or distribute the Program or its derivative works. These actions are prohibited by law if you do not accept this License. Therefore, by modifying or distributing the Program (or any work based on the Program), you indicate your acceptance of this License to do so, and all its terms and conditions for copying, distributing or modifying the Program or works based on it.

6. Each time you redistribute the Program (or any work based on the Program), the recipient automatically receives a license from the original licensor to copy, distribute or modify the Program subject to these terms and conditions. You may not impose any further restrictions on the recipients' exercise of the rights granted herein. You are not responsible for enforcing compliance by third parties to this License.

7. If, as a consequence of a court judgment or allegation of patent infringement or for any other reason (not limited to patent issues), conditions are imposed on you (whether by court order, agreement or otherwise) that contradict the conditions of this License, they do not excuse you from the conditions of this License. If you cannot distribute so as to satisfy simultaneously your obligations under this License and any other pertinent obligations, then as a consequence you may not distribute the Program at all. For example, if a patent license would not permit royalty-free redistribution of the Program by all those who receive copies directly or indirectly through you, then the only way you could satisfy both it and this License would be to refrain entirely from distribution of the Program. If any portion of this section is held invalid or unenforceable under any particular circumstance, the balance of the section is intended to apply and the section as a whole is intended to apply in other circumstances. It is not the purpose of this section to induce you to infringe any patents or other property right claims or to contest validity of any such claims; this section has the sole purpose of protecting the integrity of the free software distribution system, which is implemented by public license practices. Many people have made generous contributions to the wide range of software distributed through that system in reliance on consistent application of that system; it is up to the author/donor to decide if he or she is willing to distribute software through any other system and a licensee cannot impose that choice. This section is intended to make thoroughly clear what is believed to be a consequence of the rest of this License.

8. If the distribution and/or use of the Program is restricted in certain countries either by patents or by copyrighted interfaces, the original copyright holder who places the Program under this License may add an explicit geographical distribution limitation excluding those countries, so that distribution is permitted only in or among countries not thus excluded. In such case, this License incorporates the limitation as if written in the body of this License.

9. The Free Software Foundation may publish revised and/or new versions of the General Public License from time to time. Such new versions will be similar in spirit to the present version, but may differ in detail to address new problems or concerns. Each version is given a distinguishing version number. If the Program specifies a version number of this License which applies to it and "any later version", you have the option of following the terms and conditions either of that version or of any later version published by the Free Software Foundation. If the Program does not specify a version number of this License, you may choose any version ever published by the Free Software Foundation.

10. If you wish to incorporate parts of the Program into other free programs whose distribution conditions are different, write to the author to ask for permission. For software which is copyrighted by the Free Software Foundation, write to the Free Software Foundation; we sometimes make exceptions for this. Our decision will be guided by the two goals of preserving the free status of all derivatives of our free software and of promoting the sharing and reuse of software generally.

NO WARRANTY

11. BECAUSE THE PROGRAM IS LICENSED FREE OF CHARGE, THERE IS NO WARRANTY FOR THE PROGRAM, TO THE EXTENT PERMITTED BY APPLICABLE LAW. EXCEPT WHEN OTHERWISE STATED IN WRITING THE COPYRIGHT HOLDERS AND/OR OTHER PARTIES PROVIDE THE PROGRAM "AS IS" WITHOUT WARRANTY OF ANY KIND, EITHER EXPRESSED OR IMPLIED, INCLUDING, BUT NOT LIMITED TO, THE IMPLIED WARRANTIES OF MERCHANTABILITY AND FITNESS FOR A PARTICULAR PURPOSE. THE ENTIRE RISK AS TO THE QUALITY AND PERFORMANCE OF THE PROGRAM IS WITH YOU. SHOULD THE PROGRAM PROVE DEFECTIVE, YOU ASSUME THE COST OF ALL NECESSARY SERVICING, REPAIR OR CORRECTION.

12. IN NO EVENT UNLESS REQUIRED BY APPLICABLE LAW OR AGREED TO IN WRITING WILL ANY COPYRIGHT HOLDER, OR ANY OTHER PARTY WHO MAY MODIFY AND/OR REDISTRIBUTE THE PROGRAM AS PERMITTED ABOVE, BE LIABLE TO YOU FOR DAMAGES, INCLUDING ANY GENERAL, SPECIAL, INCIDENTAL OR CONSEQUENTIAL DAMAGES ARISING OUT OF THE USE OR INABILITY TO USE THE PROGRAM (INCLUDING BUT NOT LIMITED TO LOSS OF DATA OR DATA BEING RENDERED INACCURATE OR LOSSES SUSTAINED BY YOU OR THIRD PARTIES OR A FAILURE OF THE PROGRAM TO OPERATE WITH ANY OTHER PROGRAMS), EVEN IF SUCH HOLDER OR OTHER PARTY HAS BEEN ADVISED OF THE POSSIBILITY OF SUCH DAMAGES.

END OF TERMS AND CONDITIONS

How to Apply These Terms to Your New Programs

If you develop a new program, and you want it to be of the greatest possible use to the public, the best way to achieve this is to make it free software which everyone can redistribute and change under these terms. To do so, attach the following notices to the program. It is safest to attach them to the start of each source file to most effectively convey the exclusion of warranty; and each file should have at least the "copyright" line and a pointer to where the full notice is found.

<one line to give the program's name and a brief idea of what it does.> Copyright (C) <year> <name of author>

This program is free software; you can redistribute it and/or modify it under the terms of the GNU General Public License as published by the Free Software Foundation; either version 2 of the License, or (at your option) any later version.

This program is distributed in the hope that it will be useful, but WITHOUT ANY WARRANTY; without even the implied warranty of MERCHANTABILITY or FITNESS FOR A PARTICULAR PURPOSE. See the GNU General Public License for more details. You should have received a copy of the GNU General Public License along with this program; if not, write to the Free Software Foundation, Inc., 51 Franklin St, Fifth Floor, Boston, MA 02110-1301 USA. Also add information on how to contact you by electronic and paper mail. If the program is interactive, make it output a short notice like this when it starts in an interactive mode:

Gnomovision version 69, Copyright (C) year name of author Gnomovision comes with ABSOLUTELY NO WARRANTY; for details type 'show w'. This is free software, and you are welcome to redistribute it under certain conditions; type 'show c' for details. The hypothetical commands 'show w' and 'show c' should show the appropriate parts of the General Public License. Of course, the commands you use may be called something other than 'show w' and 'show c'; they could even be mouse-clicks or menu items—whatever suits your program. You should also get your employer (if you work as a programmer) or your school, if any, to sign a "copyright disclaimer" for the program, if necessary. Here is a sample; alter the names: Toyodine, Inc., hereby disclaims all copyright interest in the program 'Gnomovision' (which makes passes at compilers) written by James Hacker:

<signature of Ty Coon>, 1 April 1989 Ty Coon, President of Vice

This General Public License does not permit incorporating your program into proprietary programs. If your program is a subroutine library, you may consider it more useful to permit linking proprietary applications with the library. If this is what you want to do, use the GNU Library General Public License instead of this License.

uClibc r0.9 <<http://www.uclibc.org/>>, licensed under LGPL V2, LGPL V2

GNU LIBRARY GENERAL PUBLIC LICENSE Version 2, June 1991 Copyright (C) 1991 Free Software Foundation, Inc. 675 Mass Ave, Cambridge, MA 02139, USA Everyone is permitted to copy and distribute verbatim copies of this license document, but changing it is not allowed. [This is the first released version of the library GPL. It is numbered 2 because it goes with version 2 of the ordinary GPL.]

Preamble

The licenses for most software are designed to take away your freedom to share and change it. By contrast, the GNU General Public Licenses are intended to guarantee your freedom to share and change free software—to make sure the software is free for all its users.

This license, the Library General Public License, applies to some specially designated Free Software Foundation software, and to any other libraries whose authors decide to use it. You can use it for your libraries, too. When we speak of free software, we are referring to freedom, not price. Our General Public Licenses are designed to make sure that you have the freedom to distribute copies of free software (and charge for this service if you wish), that you receive source code or can get it if you want it, that you can change the software or use pieces of it in new free programs; and that you know you can do these things. To protect your rights, we need to make restrictions that forbid anyone to deny you these rights or to ask you to surrender the rights. These restrictions translate to certain responsibilities for you if you distribute copies of the library, or if you modify it.

For example, if you distribute copies of the library, whether gratis or for a fee, you must give the recipients all the rights that we gave you. You must make sure that they, too, receive or can get the source code. If you link a program with the library, you must provide complete object files to the recipients so that they can relink them with the library, after making changes to the library and recompiling it. And you must show them these terms so they know their rights.

Our method of protecting your rights has two steps: (1) copyright the library, and (2) offer you this license which gives you legal permission to copy, distribute and/or modify the library. Also, for each distributor's protection, we want to make certain that everyone understands that there is no warranty for this free library. If the library is modified by someone else and passed on, we want its recipients to know that what they have is not the original version, so that any problems introduced by others will not reflect on the original authors' reputations.

Finally, any free program is threatened constantly by software patents. We wish to avoid the danger that companies distributing free software will individually obtain patent licenses, thus in effect transforming the program into proprietary software. To prevent this, we have made it clear that any patent must be licensed for everyone's free use or not licensed at all.

Most GNU software, including some libraries, is covered by the ordinary GNU General Public License, which was designed for utility programs. This license, the GNU Library General Public License, applies to certain designated libraries. This license is quite different from the ordinary one; be sure to read it in full, and don't assume that anything in it is the same as in the ordinary license. The reason we have a separate public license for some libraries is that they blur the distinction we usually make between modifying or adding to a program and simply using it. Linking a program with a library, without changing the library, is in some sense simply using the library, and is analogous to running a utility program or application program. However, in a textual and legal sense, the linked executable is a combined work, a derivative of the original library, and the ordinary General Public License treats it as such.

Because of this blurred distinction, using the ordinary General Public License for libraries did not effectively promote software sharing, because most developers did not use the libraries. We concluded that weaker conditions might promote sharing better.

However, unrestricted linking of non-free programs would deprive the users of those programs of all benefit from the free status of the libraries themselves. This Library General Public License is intended to permit developers of non-free programs to use free libraries, while preserving your freedom as a user of such programs to change the free libraries that are incorporated in them. (We have not seen how to achieve this as regards changes in header files, but we have achieved it as regards changes in the actual functions of the library.) The hope is that this will lead to faster development of free libraries. The precise terms and conditions for copying, distribution and modification follow. Pay close attention to the difference between a "work based on the library" and a "work that uses the library". The former contains code derived from the library, while the latter only works together with the library. Note that it is possible for a library to be covered by the ordinary General Public License rather than by this special one.

GNU LIBRARY GENERAL PUBLIC LICENSE TERMS AND CONDITIONS FOR COPYING, DISTRIBUTION AND MODIFICATION

0. This License Agreement applies to any software library which contains a notice placed by the copyright holder or other authorized party saying it may be distributed under the terms of this Library General Public License (also called "this License"). Each licensee is addressed as "you". A "library" means a collection of software functions and/or data prepared so as to be conveniently linked with application programs (which use some of those functions and data) to form executables. The "Library", below, refers to any such software library or work which has been distributed under these terms. A "work based on the Library" means either the Library or any derivative work under copyright law; that is to say, a work containing the Library or a portion of it, either verbatim or with modifications and/or translated straightforwardly into another language. (Hereinafter, translation is included without limitation in the term "modification".)

"Source code" for a work means the preferred form of the work for making modifications to it. For a library, complete source code means all the source code for all modules it contains, plus any associated interface definition files, plus the scripts used to control compilation and installation of the library. Activities other than copying, distribution and modification are not covered by this License; they are outside its scope. The act of running a program using the Library is not restricted, and output from such a program is covered only if its contents constitute a work based on the Library (independent of the use of the Library in a tool for writing it). Whether that is true depends on what the Library does and what the program that uses the Library does.

1. You may copy and distribute verbatim copies of the Library's complete source code as you receive it, in any medium, provided that you conspicuously and appropriately publish on each copy an appropriate copyright notice and disclaimer of warranty; keep intact all the notices that refer to this License and to the absence of any warranty; and distribute a copy of this License along with the Library. You may charge a fee for the physical act of transferring a copy, and you may at your option offer warranty protection in exchange for a fee.

2. You may modify your copy or copies of the Library or any portion of it, thus forming a work based on the Library, and copy and distribute such modifications or work under the terms of Section 1 above, provided that you also meet all of these conditions:

- a) The modified work must itself be a software library.
- b) You must cause the files modified to carry prominent notices stating that you changed the files and the date of any change.
- c) You must cause the whole of the work to be licensed at no charge to all third parties under the terms of this License.
- d) If a facility in the modified Library refers to a function or a table of data to be supplied by an application program that uses the facility, other than as an argument passed when the facility is invoked, then you must make a good faith effort to ensure that, in the event an application does not supply such function or table, the facility still operates, and performs whatever part of its purpose remains meaningful. (For example, a function in a library to compute square roots has a purpose that is entirely well-defined independent of the application. Therefore, Subsection 2d requires that any application-supplied function or table used by this function must be optional: if the application does not supply it, the square root function must still compute square roots.)

These requirements apply to the modified work as a whole. If identifiable sections of that work are not derived from the Library, and can be reasonably considered independent and separate works in themselves, then this License, and its terms, do not apply to those sections when you distribute them as separate works. But when you distribute the same sections as part of a whole which is a work based on the Library, the distribution of the whole must be on the terms of this License, whose permissions for other licensees extend to the entire whole, and thus to each and every part regardless of who wrote it. Thus, it is not the intent of this section to claim rights or contest your rights to work written entirely by you; rather, the intent is to exercise the right to control the distribution of derivative or collective works based on the Library.

In addition, mere aggregation of another work not based on the Library with the Library (or with a work based on the Library) on a volume of a storage or distribution medium does not bring the other work under the scope of this License.

3. You may opt to apply the terms of the ordinary GNU General Public License instead of this License to a given copy of the Library. To do this, you must alter all the notices that refer to this License, so that they refer to the ordinary GNU General Public License, version 2, instead of to this License. (If a newer version than version 2 of the ordinary GNU General Public License has appeared, then you can specify that version instead if you wish.) Do not make any other change in these notices.

Once this change is made in a given copy, it is irreversible for that copy, so the ordinary GNU General Public License applies to all subsequent copies and derivative works made from that copy. This option is useful when you wish to copy part of the code of the Library into a program that is not a library.

4. You may copy and distribute the Library (or a portion or derivative of it, under Section 2) in object code or executable form under the terms of Sections 1 and 2 above provided that you accompany it with the complete corresponding machine-readable source code, which must be distributed under the terms of Sections 1 and 2 above on a medium customarily used for software interchange.

If distribution of object code is made by offering access to copy from a designated place, then offering equivalent access to copy the source code from the same place satisfies the requirement to distribute the source code, even though third parties are not compelled to copy the source along with the object code.

5. A program that contains no derivative of any portion of the Library, but is designed to work with the Library by being compiled or linked with it, is called a "work that uses the Library". Such a work, in isolation, is not a derivative work of the Library, and therefore falls outside the scope of this License.

However, linking a "work that uses the Library" with the Library creates an executable that is a derivative of the Library (because it contains portions of the Library), rather than a "work that uses the library". The executable is therefore covered by this License. Section 6 states terms for distribution of such executables. When a "work that uses the Library" uses material from a header file that is part of the Library, the object code for the work may be a derivative work of the Library even though the source code is not. Whether this is true is especially significant if the work can be linked without the Library, or if the work is itself a library. The threshold for this to be true is not precisely defined by law.

If such an object file uses only numerical parameters, data structure layouts and accessors, and small macros and small inline functions (ten lines or less in length), then the use of the object file is unrestricted, regardless of whether it is legally a derivative work. (Executables containing this object code plus portions of the Library will still fall under Section 6.)

Otherwise, if the work is a derivative of the Library, you may distribute the object code for the work under the terms of Section 6. Any executables containing that work also fall under Section 6, whether or not they are linked directly with the Library itself.

6. As an exception to the Sections above, you may also compile or link a "work that uses the Library" with the Library to produce a work containing portions of the Library, and distribute that work under terms of your choice, provided that the terms permit modification of the work for the customer's own use and reverse engineering for debugging such modifications. You must give prominent notice with each copy of the work that the Library is used in it and that the Library and its use are covered by this License. You must supply a copy of this License. If the work during execution displays copyright notices, you must include the copyright notice for the Library among them, as well as a reference directing the user to the copy of this License. Also, you must do one of these things:

a) Accompany the work with the complete corresponding machine-readable source code for the Library including whatever changes were used in the work (which must be distributed under Sections 1 and 2 above); and, if the work is an executable linked with the Library, with the complete machine-readable "work that uses the Library", as object code and/or source code, so that the user can modify the Library and then relink to produce a modified executable containing the modified Library. (It is understood that the user who changes the contents of definitions files in the Library will not necessarily be able to recompile the application to use the modified definitions.)

b) Accompany the work with a written offer, valid for at least three years, to give the same user the materials specified in Subsection 6a, above, for a charge no more than the cost of performing this distribution.

c) If distribution of the work is made by offering access to copy from a designated place, offer equivalent access to copy the above specified materials from the same place.

d) Verify that the user has already received a copy of these materials or that you have already sent this user a copy. For an executable, the required form of the "work that uses the Library" must include any data and utility programs needed for reproducing the executable from it. However, as a special exception, the source code distributed need not include anything that is normally distributed (in either source or binary form) with the major components (compiler, kernel, and so on) of the operating system on which the executable runs, unless that component itself accompanies the executable.

It may happen that this requirement contradicts the license restrictions of other proprietary libraries that do not normally accompany the operating system. Such a contradiction means you cannot use both them and the Library together in an executable that you distribute.

7. You may place library facilities that are a work based on the Library side-by-side in a single library together with other library facilities not covered by this License, and distribute such a combined library, provided that the separate distribution of the work based on the Library and of the other library facilities is otherwise permitted, and provided that you do these two things:

a) Accompany the combined library with a copy of the same work based on the Library, uncombined with any other library facilities. This must be distributed under the terms of the Sections above.

b) Give prominent notice with the combined library of the fact that part of it is a work based on the Library, and explaining where to find the accompanying uncombined form of the same work.

8. You may not copy, modify, sublicense, link with, or distribute the Library except as expressly provided under this License. Any attempt otherwise to copy, modify, sublicense, link with, or distribute the Library is void, and will automatically terminate your rights under this License. However, parties who have received copies, or rights, from you under this License will not have their licenses terminated so long as such parties remain in full compliance.

9. You are not required to accept this License, since you have not signed it. However, nothing else grants you permission to modify or distribute the Library or its derivative works. These actions are prohibited by law if you do not accept this License. Therefore, by modifying or distributing the Library (or any work based on the Library), you indicate your acceptance of this License to do so, and all its terms and conditions for copying, distributing or modifying the Library or works based on it.

10. Each time you redistribute the Library (or any work based on the Library), the recipient automatically receives a license from the original licensor to copy, distribute, link with or modify the Library subject to these terms and conditions. You may not impose any further restrictions on the recipients' exercise of the rights granted herein. You are not responsible for enforcing compliance by third parties to this License.

11. If, as a consequence of a court judgment or allegation of patent infringement or for any other reason (not limited to patent issues), conditions are imposed on you (whether by court order, agreement or otherwise) that contradict the conditions of this License, they do not excuse you from the conditions of this License. If you cannot distribute so as to satisfy simultaneously your obligations under this License and any other pertinent obligations, then as a consequence you may not distribute the Library at all. For example, if a patent license would not permit royalty-free redistribution of the Library by all those who receive copies directly or indirectly through you, then the only way you could satisfy both it and this License would be to refrain entirely from distribution of the Library. If any portion of this section is held invalid or unenforceable under any particular circumstance, the balance of the section is intended to apply, and the section as a whole is intended to apply in other circumstances. It is not the purpose of this section to induce you to infringe any patents or other property right claims or to contest validity of any such claims; this section has the sole purpose of protecting the integrity of the free software distribution system which is implemented by public license practices. Many people have made generous contributions to the wide range of software distributed through that system in reliance on consistent application of that system; it is up to the author/donor to decide if he or she is willing to distribute software through any other system and a licensee cannot impose that choice. This section is intended to make thoroughly clear what is believed to be a consequence of the rest of this License.

12. If the distribution and/or use of the Library is restricted in certain countries either by patents or by copyrighted interfaces, the original copyright holder who places the Library under this License may add an explicit geographical distribution limitation excluding those countries, so that distribution is permitted only in or among countries not thus excluded. In such case, this License incorporates the limitation as if written in the body of this License.

13. The Free Software Foundation may publish revised and/or new versions of the Library General Public License from time to time. Such new versions will be similar in spirit to the present version, but may differ in detail to address new problems or concerns. Each version is given a distinguishing version number. If the Library specifies a version number of this License which applies to it and "any later version", you have the option of following the terms and conditions either of that version or of any later version published by the Free Software Foundation. If the Library does not specify a license version number, you may choose any version ever published by the Free Software Foundation.

14. If you wish to incorporate parts of the Library into other free programs whose distribution conditions are incompatible with these, write to the author to ask for permission. For software which is copyrighted by the Free Software Foundation, write to the Free Software Foundation; we sometimes make exceptions for this. Our decision will be guided by the two goals of preserving the free status of all derivatives of our free

software and of promoting the sharing and reuse of software generally.

NO WARRANTY

15. BECAUSE THE LIBRARY IS LICENSED FREE OF CHARGE, THERE IS NO WARRANTY FOR THE LIBRARY; TO THE EXTENT PERMITTED BY APPLICABLE LAW, EXCEPT WHEN OTHERWISE STATED IN WRITING THE COPYRIGHT HOLDERS AND/OR OTHER PARTIES PROVIDE THE LIBRARY "AS IS" WITHOUT WARRANTY OF ANY KIND, EITHER EXPRESSED OR IMPLIED, INCLUDING, BUT NOT LIMITED TO, THE IMPLIED WARRANTIES OF MERCHANTABILITY AND FITNESS FOR A PARTICULAR PURPOSE. THE ENTIRE RISK AS TO THE QUALITY AND PERFORMANCE OF THE LIBRARY IS WITH YOU. SHOULD THE LIBRARY PROVE DEFECTIVE, YOU ASSUME THE COST OF ALL NECESSARY SERVICING, REPAIR OR CORRECTION.

16. IN NO EVENT UNLESS REQUIRED BY APPLICABLE LAW OR AGREED TO IN WRITING WILL ANY COPYRIGHT HOLDER, OR ANY OTHER PARTY WHO MAY MODIFY AND/OR REDISTRIBUTE THE LIBRARY AS PERMITTED ABOVE, BE LIABLE TO YOU FOR DAMAGES, INCLUDING ANY GENERAL, SPECIAL, INCIDENTAL OR CONSEQUENTIAL DAMAGES ARISING OUT OF THE USE OR INABILITY TO USE THE LIBRARY (INCLUDING BUT NOT LIMITED TO LOSS OF DATA OR DATA BEING RENDERED INACCURATE OR LOSSES SUSTAINED BY YOU OR THIRD PARTIES OR A FAILURE OF THE LIBRARY TO OPERATE WITH ANY OTHER SOFTWARE), EVEN IF SUCH HOLDER OR OTHER PARTY HAS BEEN ADVISED OF THE POSSIBILITY OF SUCH DAMAGES.

END OF TERMS AND CONDITIONS

Appendix: How to Apply These Terms to Your New Libraries

If you develop a new library, and you want it to be of the greatest possible use to the public, we recommend making it free software that everyone can redistribute and change. You can do so by permitting redistribution under these terms (or, alternatively, under the terms of the ordinary General Public License). To apply these terms, attach the following notices to the library. It is safest to attach them to the start of each source file to most effectively convey the exclusion of warranty; and each file should have at least the "copyright" line and a pointer to where the full notice is found.

<one line to give the library's name and a brief idea of what it does.>

Copyright (C) <year> <name of author>

This library is free software; you can redistribute it and/or modify it under the terms of the GNU Library General Public License as published by the Free Software Foundation; either version 2 of the License, or (at your option) any later version.

This library is distributed in the hope that it will be useful, but WITHOUT ANY WARRANTY; without even the implied warranty of MERCHANTABILITY or FITNESS FOR A PARTICULAR PURPOSE. See the GNU Library General Public License for more details.

You should have received a copy of the GNU Library General Public License along with this library; if not, write to the Free Software Foundation, Inc., 675 Mass Ave, Cambridge, MA 02139, USA. Also add information on how to contact you by electronic and paper mail.

You should also get your employer (if you work as a programmer) or your school, if any, to sign a "copyright disclaimer" for the library, if necessary. Here is a sample; alter the names:

Yoodyne, Inc., hereby disclaims all copyright interest in the library "Frob" (a library for tweaking knobs) written by James Random Hacker.

<signature of Ty Coon>, 1 April 1990

Ty Coon, President of Vice

That's all there is to it!

Curl and libcurl 7.19.7 <<http://curl.haxx.se/>>, licensed under a MIT/X derivate license,

COPYRIGHT AND PERMISSION NOTICE

Copyright (c) 1996 - 2009, Daniel Stenberg, <daniel@haxx.se>. All rights reserved.

Permission to use, copy, modify, and distribute this software for any purpose with or without fee is hereby granted, provided that the above copyright notice and this permission notice appear in all copies.

THE SOFTWARE IS PROVIDED "AS IS" WITHOUT WARRANTY OF ANY KIND, EXPRESS OR IMPLIED, INCLUDING BUT NOT LIMITED TO THE WARRANTIES OF MERCHANTABILITY, FITNESS FOR A PARTICULAR PURPOSE AND NONINFRINGEMENT OF THIRD PARTY RIGHTS. IN NO EVENT SHALL THE AUTHORS OR COPYRIGHT HOLDERS BE LIABLE FOR ANY CLAIM, DAMAGES OR OTHER LIABILITY, WHETHER IN AN ACTION OF CONTRACT, TORT OR OTHERWISE, ARISING FROM, OUT OF OR IN CONNECTION WITH THE SOFTWARE OR THE USE OR OTHER DEALINGS IN THE SOFTWARE.

Except as contained in this notice, the name of a copyright holder shall not be used in advertising or otherwise to promote the sale, use or other dealings in this Software without prior written authorization of the copyright holder.

OpenSSL 1.0.0 <<http://www.openssl.org/>>, licensed under both OpenSSL

License and Original SSLeay license,

OpenSSL License

Copyright (c) 1998-2008 The OpenSSL Project. All rights reserved. Redistribution and use in source and binary forms, with or without modification, are permitted provided that the following conditions are met:

1. Redistributions of source code must retain the above copyright notice, this list of conditions and the following disclaimer:

2. Redistributions in binary form must reproduce the above copyright notice, this list of conditions and the following disclaimer in the documentation and/or other materials provided with the distribution.

3. All advertising materials mentioning features or use of this software must display the following acknowledgment:

"This product includes software developed by the OpenSSL Project for use in the OpenSSL Toolkit. (<http://www.openssl.org/>)"

4. The names "OpenSSL Toolkit" and "OpenSSL Project" must not be used to endorse or promote products derived from this software without prior written permission. For written permission, please contact openssl-core@openssl.org.

5. Products derived from this software may not be called "OpenSSL" nor may "OpenSSL" appear in their names without prior written permission of the OpenSSL Project.

6. Redistributions of any form whatsoever must retain the following acknowledgment: "This product includes software developed by the OpenSSL Project for use in the OpenSSL Toolkit (<http://www.openssl.org/>)"

*THIS SOFTWARE IS PROVIDED BY THE OPENSSL PROJECT "AS IS" AND ANY EXPRESSED OR IMPLIED WARRANTIES, INCLUDING, BUT NOT LIMITED TO, THE IMPLIED WARRANTIES OF MERCHANTABILITY AND FITNESS FOR A PARTICULAR PURPOSE ARE DISCLAIMED. IN NO EVENT SHALL THE OPENSSL PROJECT OR ITS CONTRIBUTORS BE LIABLE FOR ANY DIRECT, INDIRECT, INCIDENTAL, SPECIAL, EXEMPLARY, OR CONSEQUENTIAL DAMAGES (INCLUDING, BUT NOT LIMITED TO, PROCUREMENT OF SUBSTITUTE GOODS OR SERVICES; LOSS OF USE, DATA, OR PROFITS; OR BUSINESS INTERRUPTION) HOWEVER CAUSED AND ON ANY THEORY OF LIABILITY, WHETHER IN CONTRACT, STRICT LIABILITY, OR TORT (INCLUDING NEGLIGENCE OR OTHERWISE) ARISING IN ANY WAY OUT OF THE USE OF THIS SOFTWARE, EVEN IF ADVISED OF THE POSSIBILITY OF SUCH DAMAGE.

This product includes cryptographic software written by Eric Young (ey@cryptsoft.com). This product includes software written by Tim Hudson (tjh@cryptsoft.com). Original SSLeay License Copyright (C) 1995-1998 Eric Young (ey@cryptsoft.com) All rights reserved.

This package is an SSL implementation written by Eric Young (ey@cryptsoft.com). The implementation was written so as to conform with Netscape's SSL.

This library is free for commercial and non-commercial use as long as the following conditions are adhered to. The following conditions apply to all code found in this distribution, be it the RC4, RSA, lhash, DES, etc., code; not just the SSL code. The SSL documentation included with this distribution is covered by the same copyright terms except that the holder is Tim Hudson (tjh@cryptsoft.com). Copyright remains Eric Young's, and as such any Copyright notices in the code are not to be removed. If this package is used in a product, Eric Young should be given attribution as the author of the parts of the library used. This can be in the form of a textual message at program startup or in documentation (online or textual) provided with the package. Redistribution and use in source and binary forms, with or without modification, are permitted provided that the following conditions are met:

1. Redistributions of source code must retain the copyright notice, this list of conditions and the following disclaimer:

2. Redistributions in binary form must reproduce the above copyright notice, this list of conditions and the following disclaimer in the documentation and/or other materials provided with the distribution.

3.All advertising materials mentioning features or use of this software must display the following acknowledgement: "This product includes cryptographic software written by Eric Young (eay@cryptsoft.com)" The word 'cryptographic' can be left out if the routines from the library being used are not cryptographic related :-).

4. If you include any Windows specific code (or a derivative thereof) from the apps directory (application code) you must include an acknowledgement: "This product includes software written by Tim Hudson (tjh@cryptsoft.com)"

THIS SOFTWARE IS PROVIDED BY ERIC YOUNG "AS IS" AND ANY EXPRESS OR IMPLIED WARRANTIES, INCLUDING, BUT NOT LIMITED TO, THE IMPLIED WARRANTIES OF MERCHANTABILITY AND FITNESS FOR A PARTICULAR PURPOSE ARE DISCLAIMED. IN NO EVENT SHALL THE AUTHOR OR CONTRIBUTORS BE LIABLE FOR ANY DIRECT, INDIRECT, INCIDENTAL, SPECIAL, EXEMPLARY, OR CONSEQUENTIAL DAMAGES (INCLUDING, BUT NOT LIMITED TO, PROCUREMENT OF SUBSTITUTE GOODS OR SERVICES; LOSS OF USE, DATA, OR PROFITS; OR BUSINESS INTERRUPTION) HOWEVER CAUSED AND ON ANY THEORY OF LIABILITY, WHETHER IN CONTRACT, STRICT LIABILITY, OR TORT (INCLUDING NEGLIGENCE OR OTHERWISE) ARISING IN ANY WAY OUT OF THE USE OF THIS SOFTWARE, EVEN IF ADVISED OF THE POSSIBILITY OF SUCH DAMAGE.

The licence and distribution terms for any publically available version or derivative of this code cannot be changed. i.e. this code cannot simply be copied and put under another distribution licence [including the GNU Public Licence.] Ogg Vorbis <<http://xiph.org/vorbis/>>, licensed as below, Copyright (c) 2002, Xiph.org Foundation

Redistribution and use in source and binary forms, with or without modification, are permitted provided that the following conditions are met:

- Redistributions of source code must retain the above copyright notice, this list of conditions and the following disclaimer.
- Redistributions in binary form must reproduce the above copyright notice, this list of conditions and the following disclaimer in the documentation and/or other materials provided with the distribution.

- Neither the name of the Xiph.org Foundation nor the names of its contributors may be used to endorse or promote products derived from this software without specific prior written permission.

THIS SOFTWARE IS PROVIDED BY THE COPYRIGHT HOLDERS AND CONTRIBUTORS "AS IS" AND ANY EXPRESS OR IMPLIED WARRANTIES, INCLUDING, BUT NOT LIMITED TO, THE IMPLIED WARRANTIES OF MERCHANTABILITY AND FITNESS FOR A PARTICULAR PURPOSE ARE DISCLAIMED. IN NO EVENT SHALL THE FOUNDATION OR CONTRIBUTORS BE LIABLE FOR ANY DIRECT, INDIRECT, INCIDENTAL, SPECIAL, EXEMPLARY, OR CONSEQUENTIAL DAMAGES (INCLUDING, BUT NOT LIMITED TO, PROCUREMENT OF SUBSTITUTE GOODS OR SERVICES; LOSS OF USE, DATA, OR PROFITS; OR BUSINESS INTERRUPTION) HOWEVER CAUSED AND ON ANY THEORY OF LIABILITY, WHETHER IN CONTRACT, STRICT LIABILITY, OR TORT (INCLUDING NEGLIGENCE OR OTHERWISE) ARISING IN ANY WAY OUT OF THE USE OF THIS SOFTWARE, EVEN IF ADVISED OF THE POSSIBILITY OF SUCH DAMAGE.

FLAC <<http://flac.sourceforge.net/index.html>>, licensed as below, Copyright (C) 2000,2001,2002,2003,2004,2005,2006,2007,2008,2009 Josh Coalson

Redistribution and use in source and binary forms, with or without modification, are permitted provided that the following conditions are met:

- Redistributions of source code must retain the above copyright notice, this list of conditions and the following disclaimer.
- Redistributions in binary form must reproduce the above copyright notice, this list of conditions and the following disclaimer in the documentation and/or other materials provided with the distribution.

- Neither the name of the Xiph.org Foundation nor the names of its contributors may be used to endorse or promote products derived from this software without specific prior written permission.

THIS SOFTWARE IS PROVIDED BY THE COPYRIGHT HOLDERS AND CONTRIBUTORS "AS IS" AND ANY EXPRESS OR IMPLIED WARRANTIES, INCLUDING, BUT NOT LIMITED TO, THE IMPLIED WARRANTIES OF MERCHANTABILITY AND FITNESS FOR A PARTICULAR PURPOSE ARE DISCLAIMED. IN NO EVENT SHALL THE FOUNDATION OR CONTRIBUTORS BE LIABLE FOR ANY DIRECT, INDIRECT, INCIDENTAL, SPECIAL, EXEMPLARY, OR CONSEQUENTIAL DAMAGES (INCLUDING, BUT NOT LIMITED TO, PROCUREMENT OF SUBSTITUTE GOODS OR SERVICES; LOSS OF USE, DATA, OR PROFITS; OR BUSINESS INTERRUPTION) HOWEVER CAUSED AND ON ANY THEORY OF LIABILITY, WHETHER IN CONTRACT, STRICT LIABILITY, OR TORT (INCLUDING NEGLIGENCE OR OTHERWISE) ARISING IN ANY WAY OUT OF THE USE OF THIS SOFTWARE, EVEN IF ADVISED OF THE POSSIBILITY OF SUCH DAMAGE.

