



# Quick start guide

SE571/SE576

**PHILIPS**

# What's in the box



Handset\*



Base station (SE576)



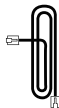
Base station (SE571)



Charger\*



Power adapter\*



Line cord\*\*



User manual  
Quick start guide  
Guarantee

## Note

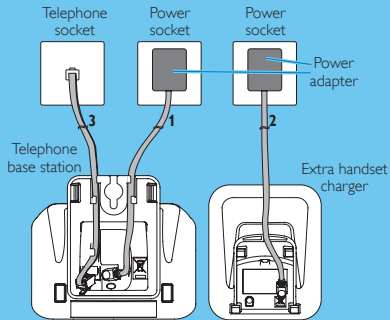
- \* In multi-handset packs, there are additional handsets, chargers and power adapters.
- \*\* In some countries, you have to connect the line adapter to the line cord, then plug the line cord to the telephone socket.

## Caution

- Use only the supplied batteries and power adapter.

# 1 Connect

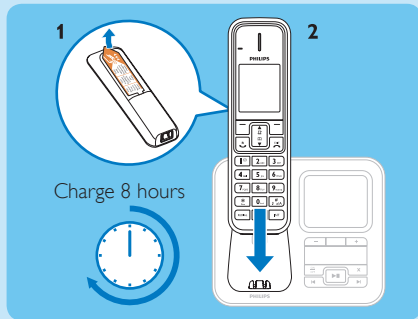
## Connect the base station



- 1 Connect each end of the power adapter to:
  - the DC input jack at the bottom of the base station;
  - the power socket on the wall.
- 2 Connect each end of the power adapter to (for multi-handset packs):
  - the DC input jack at the bottom of the extra handset charger.
  - the power socket on the wall.
- 3 Connect each end of the line cord to:
  - the telephone socket at the bottom of the base station;
  - the telephone socket on the wall.

## 2 Install

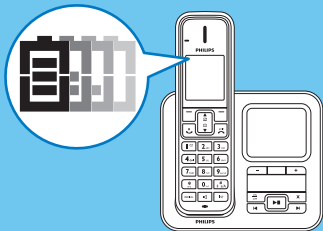
### Install the handset



- 1** The batteries are pre-installed in the handset. Pull the battery tape off from the battery door before charging.
- 2** Place the handset on the base station to charge the handset. When the handset is placed correctly on the base station, you hear the docking sound.  
↳ The handset starts charging.

**Note** Charge the batteries for 8 hours before first use.

## Check the battery level



When the handset is off the base station/charger, the bars indicate the battery level (full, medium and low). When the handset is on the base station/charger, the bars keep scrolling until charging completes.






The empty battery icon flashes and you hear an alert tone.



The battery is low and needs recharging.

# 3 Enjoy

## Call

- To make a call, press  and dial the phone number.
- To answer a call, press  when the phone rings.
- To end a call, press .

## Adjust the earpiece volume

Press  or  to adjust the volume during a call.

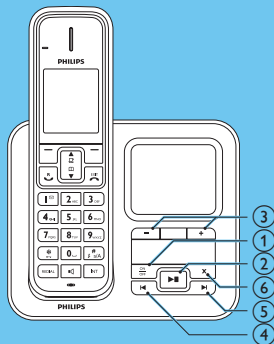
## Add a contact in the phonebook

- 1 Select **[MENU]** > **[PHONEBOOK]** > **[NEW ENTRY]**, then press **[SELECT]** to confirm.
- 2 Enter the name then press **[OK]** to confirm.
- 3 Enter the number, then press **[SAVE]** to confirm.

## Record an announcement (for SE576 only)

- 1 Select **[MENU]** > **[ANSWER MACHINE]** > **[ANNOUNCEMENT]**, then press **[SELECT]** to confirm.
- 2 Select **[ANSWER & REC.]** or **[ANSWER ONLY]**, then press **[SELECT]** to confirm.
- 3 Select **[RECORD]**, then press **[SELECT]** to confirm.
- 4 Start recording close to the microphone after the beep.
- 5 Press **[OK]** to stop recording.
  - ↳ You can listen to the newly recorded announcement on the handset.

## Listen to messages recorded on the answering machine (for SE576 only)



- ① Switch on/off the answering machine: Press **ON/OFF**.
- ② Start/Stop listening to the recorded messages: Press **▶■**.
- ③ Adjust the volume: Press **+ / -**.
- ④ Skip backward:  
When you listen to the messages, press **◀** to listen to the message from the beginning.  
During the first second of the current message, press **◀** to listen to the previous message.
- ⑤ Skip forward: Press **▶** to skip to the next message.
- ⑥ Delete the current message: Press **X**.

**Note** For more information, see the Telephone answering machine section in the user manual.

# Welcome to Philips

Register your product at [www.philips.com/welcome](http://www.philips.com/welcome)

## Need help?

### User manual

Refer to the user manual that came with your new phone.

### Online help

[www.philips.com/support](http://www.philips.com/support)



Reproduction in whole or in part is prohibited without the written consent of the copyright owner. Trademarks are the property of Koninklijke Philips Electronics N.V. or their respective owners. © 2010 Koninklijke Philips Electronics N.V. All rights reserved.



**CE 0168**

Printed in China

QSG\_SE571-576\_EN\_V1.0  
WK10195