

PHILIPS

便携式扬声器

SB300



快速使用指南 Quick Start Guide

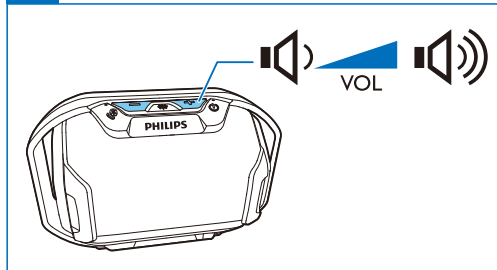
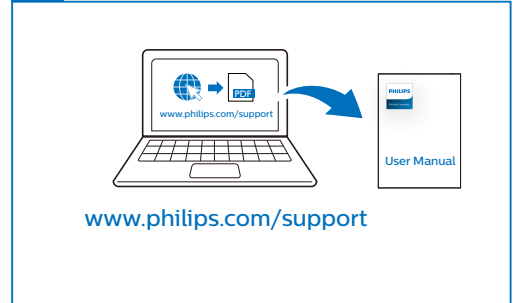
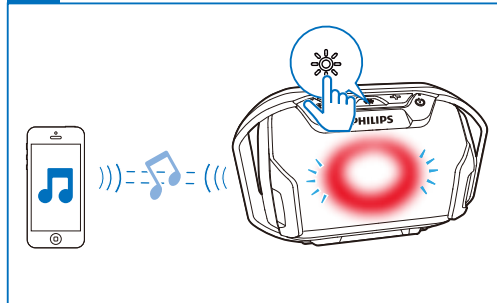
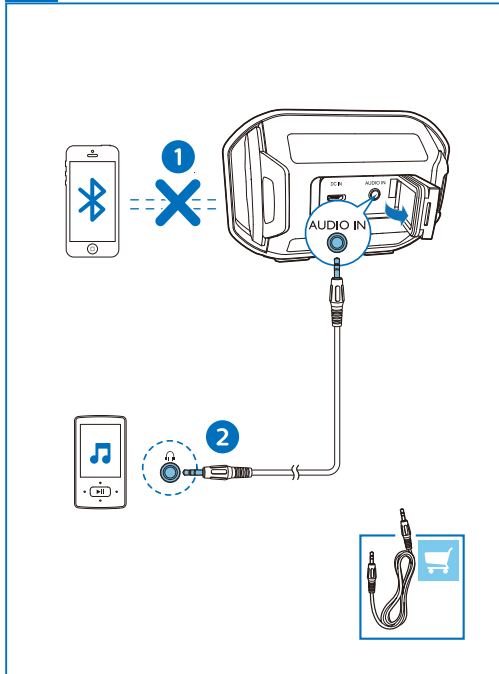
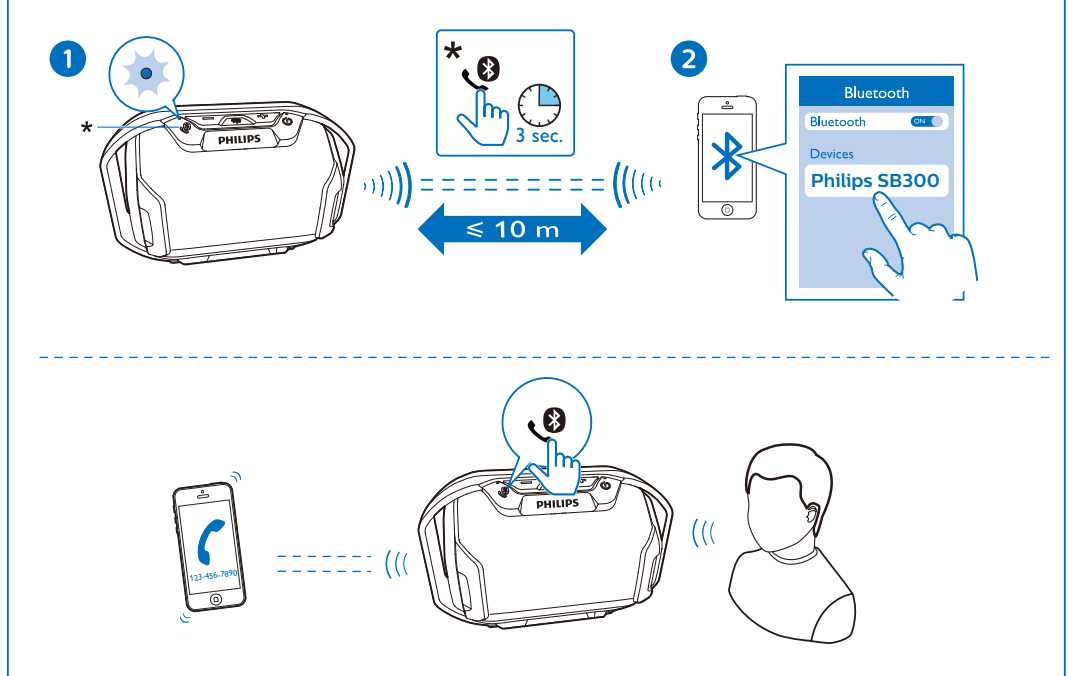
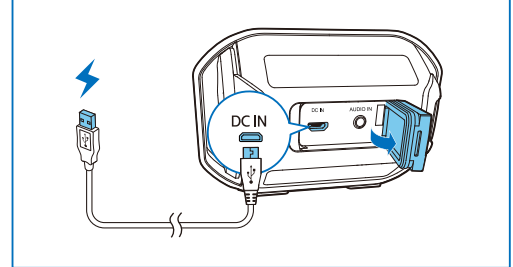
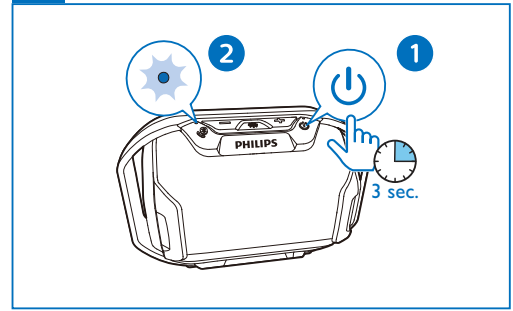
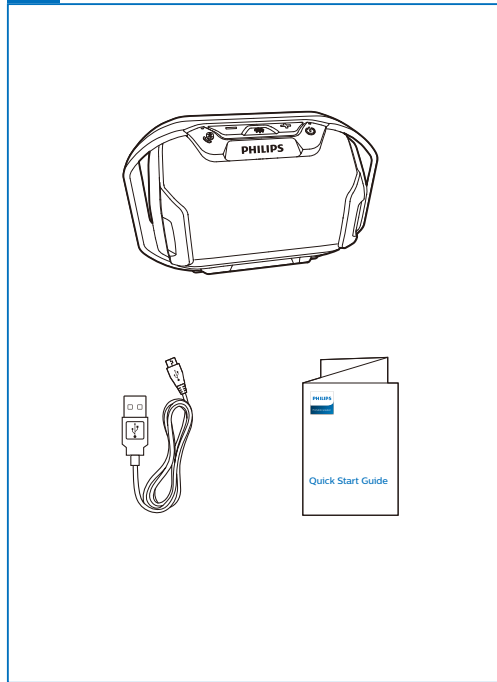
在以下网站上注册产品并获得支持

www.philips.com/support



Specifications are subject to change without notice. This product has been manufactured by, and is sold under the responsibility of WOOX Innovations (Shanghai) Commercial Company Ltd., and WOOX Innovations (Shanghai) Commercial Company Ltd., is the warrantor in relation to this product. Philips and the Philips Shield Emblem are registered trademarks of Koninklijke Philips N.V. and are used under license.

SB300_93_QSG_V1.0



简体中文

1 重要事项

- 仅使用制造商指定的附件/配件。
- 不可将电池置于高温环境，如阳光直射处、明火或类似环境。
- 不要将任何危险源放在本装置上（例如点燃的蜡烛）。
- 仅当 USB/AUDIO-IN 插孔盖完全盖好时，产品才能达到 IPX7 防水标准。
- 产品工作温度为 -10° C 到 40° C。
- 产品只支持 USB V2.0 或 V1.1。

注意：铭牌（铭牌上的信息包括工作电压）位于产品背面，使用前请先了解铭牌上的相关信息。

2 声明

如果用户未经 Gibson Innovations 的明确许可而擅自对此设备进行更改或修改，则可能导致其无权操作此设备。

弃置旧产品

 本产品采用可回收利用的高性能材料和组件制造而成。

弃置产品时，请不要将其与一般生活垃圾一同丢弃，应将其交给政府指定的回收中心或回收。这样做有利于环保。

警告：拆卸内置电池将使保修失效，并可能损坏本产品。

务必让专业人员拆卸产品中的内置电池。

 **Bluetooth** 蓝牙® 字样和徽标均为 Bluetooth SIG, Inc. 所有的注册商标，Gibson Innovations Limited 对此类字样和徽标的任何使用均已获得许可。其它商标和商品名称均属于它们各自的所有者。

3 规格

- 额定输出功率（功放器）：
4W RMS ≤ 1% THD
- 声频响应：110-16000 Hz
- 扬声器驱动器：1.5 英寸全频，4 Ω
- 低音增强：2 个无源辐射器
- 蓝牙版本：V4.0
- 支持的蓝牙配置文件：HFP V1.6、A2DP V1.2、AVRCP V1.4
- 蓝牙频段/输出功率：2.400 GHz ~ 2.483 GHz ISM 频段/ ≤ 4 dBm (2 类)
- AUX 输入电平：500 毫伏 ± 100 毫伏
- 防水等级：IPX7
- 电池：内置锂离子电池（3.7 伏，800 毫安时）
- 电池供电模式下的播放时间：约8小时
- 充电时间：约3小时
- USB 充电：5 伏，500 毫安/A 型插孔
- 产品尺寸（宽 x 高 x 厚）：
117 x 77 x 74 毫米
- 产品重量：0.23 千克

4 故障排除

不能通电

- 闲置 15 分钟后，为了节省电量，扬声器会自动关闭。
- 电池电量不足时，红色 LED 指示灯会闪烁 10 分钟。这时请为您的扬声器充电。

LED 指示灯行为（红色）

- 电池电量不足：呈红色闪烁 10 分钟，然后关闭（在开机模式下）；
- 正在充电：呈红色持续亮起；
- 充满电：红色指示灯关闭。





无法与您的蓝牙设备配对

- 按住  3 秒钟进入蓝牙配对模式。

LED 指示灯行为（蓝色）

- 配对就绪：呈蓝色快速闪烁；
- 当连接先前连接的设备时：呈蓝色缓慢闪烁；
- 连接后：呈蓝色持续亮起。

如何使用免提通话

- 按下  可接听来电。
- 按住  3 秒钟可拒接来电。
- 通话时，按下  可结束当前通话。
- 通话时，按住  3 秒钟可将通话转接至移动设备。

注意：若有来电，音乐播放会暂停。

播放我的 MP3 播放器中的音乐时没有声音

- 确保通过蓝牙播放的音乐已停止运行。

English

1 Important


- Only use attachments/accessories specified by the manufacturer.
- The battery shall not be exposed to excessive heat such as sunshine, fire or the like.
- Do not place any sources of danger on the apparatus (e.g. lighted candles).
- The product can meet IPX7 waterproof standard only when the USB/AUDIO-IN socket cover is covered seamlessly.
- The operation temperature of the product is from -10 °C to 40 °C.
- The product supports USB V2.0 or V1.1 only.

Note: The type plate is located on the back of the product.

2 Notice

Any changes or modifications made to this device that are not expressly approved by Gibson Innovations may void the user's authority to operate the equipment.

Disposal of your old product

 Your product is designed and manufactured with high quality materials and components, which can be recycled and reused.

Do not throw away the product with the normal household waste at the end of its life, but hand it in at an official collection point or recycling. By doing this, you help to preserve the environment.

Caution: Removal of the built-in battery invalidates the warranty and may destroy the product.

Always bring your product to a professional to remove the built-in battery.

 **Bluetooth** The Bluetooth® word mark and logos are registered trademarks owned by Bluetooth SIG, Inc. and any use of such marks by Gibson Innovations Limited is under license. Other trademarks and trade names are those of their respective owners.

3 Specifications

- Rated Output Power (Amplifier):
4W RMS ≤ 1% THD

产品名称及有害物质名称和含量
Names and Contents of Hazardous Substances

部件名称 Name of the Parts	有害物质 Hazardous Substances				
	铅 (Pb, Lead)	汞 (Hg, Mercury)	镉 (Cd, cadmium)	六价铬 (Chromium (VI))	多溴联苯 (PBB)
Housing 外壳	○	○	○	○	○
Loudspeakers 喇叭单元	○	○	○	○	○
PWBs 电路板组件	○	○	○	○	○
Accessories (Cables) 附件 (电源线, 连接线)	○	○	○	○	○

本表格依据 SJ/T 11364 的规定编制。
The table is compiled according to SJ/T 11364.

○: 表示该有害物质在该部件所有均质材料中的含量均在 GB/T 26572 标准规定的限量要求以下。
○: Indicates that this hazardous substance contained in all of the homogeneous materials for this part is below the limit requirement in GB/T 26572.

x: 表示该有害物质在该部件的某一均质材料中的含量超出 GB/T 26572 标准规定的限量要求。
X: Indicates that this hazardous substance contained in at least one of the homogeneous materials used for this part is above the limit requirement in GB/T 26572.



环保使用期限 Environmental Protection Use Period
这标志表示的期间 (10 年) 是电子产品中有害物质在正常使用条件下不会发生外泄或改变，电子产品用户使用该电子产品不会对环境造成严重污染或对其人身、财产造成严重损害的期限。

This logo refers to the period (10 years) during which the hazardous substances in electronic and electrical products will not leak or mutate so that the use of these [substances] will not result in any severe environmental pollution, any bodily injury or damage to any assets.

- Acoustic Frequency Response: 110-16000 Hz
- Speaker Driver: 1.5" full range, 4 Ω
- Bass Enhancement: 2 x passive radiator
- Bluetooth Version: V4.0
- Bluetooth Supported Profiles: HFP V1.6, A2DP V1.2, AVRCP V1.4
- Bluetooth Frequency Band / Output Power: 2.400GHz ~ 2.483GHz ISM Band / ≤ 4dBm (Class 2)
- AUX Input Level: 500mV±100mV
- Water Resistance: IPX7
- Battery: Built-in Li-ion rechargeable battery (3.7V, 800 mAh)
- Play Time in Battery Mode: Approx. 8 hours
- Charging Time: Approx. 3 hours
- USB Charging: 5V, 500mA / Type-A socket
- Product Dimensions (W x H x D): 117 x 77 x 74 mm
- Product Weight: 0.23 kg

4 Troubleshooting

No power

- The speaker switches off automatically for power saving when being idle for 15 minutes.
- The red LED indicator flashes for 10 minutes when the battery is low. Recharge your speaker.

LED indicator behavior (red)

- Low battery: flashing red for 10 minutes, then turn off (in power-on mode);
- Under charging: solid red;
- Fully charged: no light.





Cannot pair with your Bluetooth device

- Press and hold  for 3 seconds to enter pairing mode.

LED indicator behavior (blue)

- Ready for pairing: flashing blue quickly;
- When connecting the previously connected device: flashing blue slowly;
- When connected: solid blue.

How to use handsfree call

- Press  to answer an incoming call.
- Press and hold  for 3 seconds to reject an incoming call.
- During a call, press  to end the current call.
- During a call, press and hold  for 3 seconds to transfer the call to your mobile device.

Note: Music play pauses when there is an incoming call.

No sound while playing my MP3 player.

- Make sure that music playback through Bluetooth is stopped.