

隨時為您提供協助

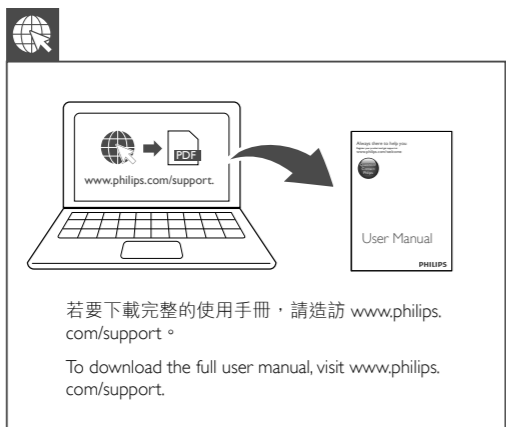
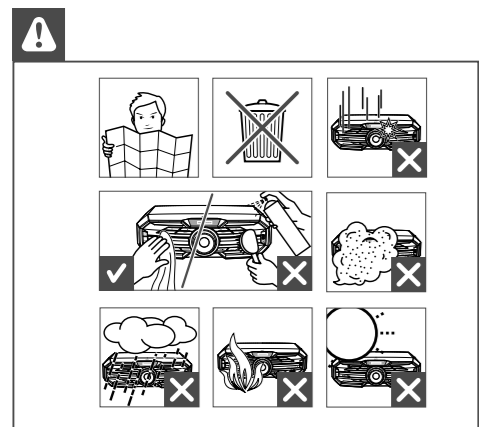
Always there to help you

請至以下網址註冊您的產品並取得支援：
Register your product and get support at
www.philips.com/support



短版使用手冊 Short User Manual

PHILIPS



2015 © Gibson Innovations Limited. All rights reserved.
This product has been manufactured by, and is sold under the responsibility of
Gibson Innovations Ltd. and Gibson Innovations Ltd. is the warrantor in relation
to this product.
Philips and the Philips Shield Emblem are registered trademarks of Koninklijke
Philips N.V. and are used under license from Koninklijke Philips N.V.

FXD58_96_Short User Manual_V1.0



FXD58

ZH-TW

重要事項

安全性

瞭解這些安全符號



此「閃電」表示產品內部的非絕緣材質可能導致觸電。為保障家中所有人員的安全，請勿拆卸產品外殼。

對於「驚嘆號」提醒您注意的功能，應仔細閱讀隨附的說明文字，避免發生操作及維修問題。

警告：為降低火災與觸電的危險，您應避免讓本產品暴露於雨水或瀟氣中，並且請勿在本產品上放置花瓶等裝有液體之物品。

注意：為避免觸電，請將插頭較寬的接腳插入較寬的插孔中，並確定完全插入。

重要安全性指示

- 1 閱讀這些指示
2 請妥善保存這些指示
3 注意所有警告文字。
4 遵循所有指示。
5 請勿在近水處使用本產品。
6 清潔時僅能使用乾布。
7 請勿阻塞任何通風口。請依照製造商的指示進行安裝。
8 請勿將本產品安裝在接近熱源處，例如暖器裝置、暖氣孔、火爐或其他會產生高溫的產品(包括擴大機在內)。
9 妥善保護電源線，避免踩踏或夾壓，尤其是插頭、便利插座，以及電源線與產品的連接處。
10 僅使用原廠指定的附件/配件。
11 僅使用經原廠指定或隨產品銷售的推車、底座、三腳架、支架或桌子。使用推車移動產品時應謹慎小心，避免因翻覆而造成傷害。



若需下載完整的使用手冊，請造訪 www.philips.com/support。
To download the full user manual, visit www.philips.com/support.

- 12 如遇雷雨或長時間不使用時，請將產品的插頭拔除。
13 所有維修服務應委託合格的服務人員處理。當本產品因故損壞時(例如電源線或插頭損壞、液體潑濺、物品掉入產品內部、產品淋到雨或受潮、無法正常運作或摔落等)，都必須進行維修。
14 電池使用注意事項 - 為防止電池滲漏導致人身傷害、財物受損或產品損壞：
- 請依照裝置上標示的 + 與 - 極正確安裝所有電池。
- 請勿混用電池(新舊混用或鹼性電池混用等)。
- 若裝置長時間不使用時，請將電池取出。
請將產品置於容易滴水或濺水的環境。
15 請勿將產品置於容易滴水或濺水的環境。
16 請勿在產品上放置危險物品(如盛裝液體的容器、點燃的蠟燭等)。
17 當電源插頭或電器連接器作為中斷連接裝置時，中斷連接裝置應保持隨時可操作。

有過熱危險！請勿將本產品安裝於狹隘的空間。本產品周圍務必至少預留四英吋的空間以保持通風。請確保勿使窗簾或其他物品遮蓋電視的通風孔。

經型式認證合格之低功率射頻電機，非經許可，公司、商號或使用者均不得擅自變更頻率、加大功率或變更原設計之特性及功能。
低功率射頻電機之使用不得影響飛航安全及干擾合法通信；經發現有干擾現象時，應立即停用，並改善至無干擾時方得繼續使用。

注意

- 使用本手冊以外的方法來控制、調校或不按順序操作，可能會導致危險雷射外洩或造成其他不安全的操作。

警告

- 請勿打開裝置的外殼。
• 請勿在裝置的任何部位使用潤滑油。
• 請將裝置平放於堅硬而穩固的平面上。
• 請勿將裝置放在其他電器上。
• 此裝置僅能在室內使用。請勿讓裝置接近水、濕氣及盛裝液體之物品。
• 請勿讓裝置直接曝曬於陽光下，或靠近未隔離的火爐或熱源。
• 請勿直視裝置內的雷射光。

注意

CE0560

符合性聲明

Gibson Innovations 特此聲明本產品符合 1999/5/EC 法規之必要規範及其他相關條款。您可在 www.p4c.philips.com 找到符合性聲明。

未經 Gibson Innovations 明示核可即變更或修改本裝置，可能導致使用者操作設備的授權失效。

規格如有更改，恕不另行通知。Gibson Innovations 保留隨時變更產品的權利，毋需隨之調整早期庫存。

處理廢棄產品及電池

用以設計和製造產品的高品質材料和元件可供回收並重複使用。
請將您的產品與其他家用廢棄物共同丟棄。請瞭解當地電器、電子產品及電池的垃圾分類相關法規。正確處理這些產品有助於避免對環境和人類健康帶來負面影響。
您的產品內含不能作為一般家庭廢棄物處理的電池。請了解當地有關電池的垃圾分類相關法規。正確處理廢棄電池有助於避免對環境和人類健康帶來負面影響。
請造訪 www.recycle.philips.com，以取得您當地回收中心的詳細資訊。

關於使用電池的資訊：

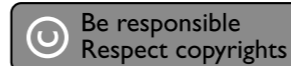
注意

- 漏液的危險：請使用指定類型的電池。請勿混用新舊電池。請勿混用不同品牌的電池。注意正確的電極。若產品長時間不使用時，請將電池取出。將電池置於乾燥處。
• 受傷的危險：處理漏液電池時請穿戴手套。電池請放在兒童和寵物無法取得的地方。
• 爆炸的危險：請勿將電池短路。請勿將電池暴露於高溫環境。請勿將電池丟入火中。請勿損傷或拆解電池。請勿將非充電式電池充電。

環境保護資訊

所有非必要之包裝材料均已省略。我們嘗試讓包裝可以輕易拆解成三種材質：厚紙板(外盒)、聚苯乙烯泡綿(防震)以及聚乙烯(包裝袋、保護性泡綿膠紙)。
產品本身含有可回收並重複使用的材質，但是需由專業公司拆解。請根據地方法規丟棄包裝材料、廢電池和舊器材。

版權說明



本物品採用具有版權保護的技術，受到某些美國專利及 Rovi Corporation 的其他智慧財產權保護。禁止進行反向工程或拆解。

商標說明

本產品由 Gibson Innovations Ltd. 製造並負責銷售作業，且 Gibson Innovations Ltd. 為本產品的保證人。

Philips 以及 Philips 盾牌標誌為 Koninklijke Philips N.V. 的註冊商標，且經 Koninklijke Philips N.V. 授權使用。

依據 Dolby Laboratories 之授權製造。Dolby 與雙 D 符號為 Dolby Laboratories 之商標。

DivX®、DivX Ultra®、DivX Certified® 與相關標誌是 Rovi Corporation 或其子公司的商標，經授權使用。

DivX Ultra® 認證能播放 DivX® 視訊，並能使用進階功能及優質內容。

關於 DIVX VIDEO：DivX® 是 DivX, LLC 創立的數位視訊格式，DivX, LLC 本身為 Rovi Corporation 的子公司。此為正式的 DivX Certified® 裝置，能播放 DivX 視訊。請造訪 divx.com 瞭解更多資訊，並下載軟體工具將檔案轉換為 DivX 視訊。

關於 DIVX VIDEO-ON-DEMAND：DivX Certified® 裝置必須先註冊才能播放購買的 DivX Video-on-Demand (VOD) 電影。如要取得註冊碼，請在您的裝置設定選單中，找到 DivX VOD 部分。請造訪 vod.divx.com 取得更多資訊，瞭解如何完成註冊。

「DVD Video」為 DVD Format/Logo Licensing Corporation 的商標。

HDMI、HDMI 標誌以及 High-Definition Multimedia Interface (HDMI)，高畫質媒體介面) 為 HDMI 授權 LLC 在美國及其他國家的商標或註冊商標。

Bluetooth® 文字標記及標誌為 Bluetooth SIG, Inc. 之註冊商標，Gibson 對這些標記的使用均已獲得授權。其他商標與商品名稱為其各自擁有者所有。
N 標誌為 NFC Forum, Inc. 在美國及其他國家/地區的商標或註冊商標。



備註

- 機位牌位於裝置背面。

規格

擴大機

Table with 2 columns: Specification and Value. Includes 額定輸出功率, 頻率響應, 訊噪比, 音訊輸入.

光碟

Table with 2 columns: Specification and Value. Includes 雷射類型, 光碟直徑, 視訊解碼.

調諧器 (FM)

Table with 2 columns: Specification and Value. Includes 調諧範圍, 變更調幅, 敏感度 - 單聲道, 總諧波失真, 訊噪比.

揚聲器

Table with 2 columns: Specification and Value. Includes 揚聲器阻抗, 揚聲器驅動器, 敏感度.

藍牙

Table with 2 columns: Specification and Value. Includes 藍牙版本.

Table with 2 columns: Specification and Value. Includes 頻率波段, 範圍, 一般資訊, AC 電源, 操作耗電量, 待機耗電量, 複合視訊輸出, USB Direct.

EN

Important

Safety

Know these safety symbols



This 'bolt of lightning' indicates uninsulated material within your unit may cause an electrical shock. For the safety of everyone in your household, please do not remove product covering. The 'exclamation mark' calls attention to features for which you should read the enclosed literature closely to prevent operating and maintenance problems.

WARNING: To reduce the risk of fire or electric shock, this apparatus should not be exposed to rain or moisture and objects filled with liquids, such as vases, should not be placed on this apparatus.

CAUTION: To prevent electric shock, match wide blade of plug to wide slot, and fully insert the plug.

Important Safety Instructions

- 1 Read these instructions.
2 Keep these instructions.
3 Heed all warnings.
4 Follow all instructions.
5 Do not use this apparatus near water.
6 Clean only with dry cloth.
7 Do not block any ventilation openings. Install in accordance with the manufacturer's instructions.
8 Do not install near any heat sources such as radiators, heat registers, stoves, or other apparatus (including amplifiers) that produce heat.
9 Protect the power cord from being walked on or pinched, particularly at plugs, convenience receptacles, and the point where they exit from the apparatus.
10 Only use attachments/accessories specified by the manufacturer.
11 Use only with the cart, stand, tripod, bracket, or table specified by the manufacturer or sold with the apparatus. When a cart is used, use caution when moving the cart/apparatus combination to avoid injury from tip-over.



- 12 Unplug this apparatus during lightning storms or when unused for long periods of time.
13 Refer all servicing to qualified service personnel. Servicing is required when the apparatus has been damaged in any way, such as power-supply cord or plug is damaged, liquid has been spilled or objects have fallen into the apparatus, the apparatus has been exposed to rain or moisture, does not operate normally, or has been dropped.
14 Battery usage CAUTION - To prevent battery leakage which may result in bodily injury, property damage, or damage to the unit.
- Install all batteries correctly, + and - as marked on the unit.
- Do not mix batteries (old and new or carbon and alkaline, etc.).
- Remove batteries when the unit is not used for a long time.
15 Apparatus shall not be exposed to dripping or splashing. Do not place any sources of danger on the apparatus (e.g. liquid filled objects, lighted candles).
16 Where the MAINS plug or an appliance coupler is used as the disconnect device, the disconnect device shall remain readily operable.

Risk of overheating! Never install this apparatus in a confined space. Always leave a space of at least four inches around this apparatus for ventilation. Ensure curtains or other objects never cover the ventilation slots on this apparatus.

Caution

- Use of controls or adjustments or performance of procedures other than herein may result in hazardous laser exposure or other unsafe operation.

Warning

- Never remove the casing of this unit.
• Never lubricate any part of this unit.
• Place this unit on a flat, hard and stable surface.
• Never place this unit on other electrical equipment.
• Only use this unit indoors. Keep this unit away from water, moisture and liquid-filled objects.
• Keep this unit away from direct sunlight, naked flames or heat.
• Never look into the laser beam inside the unit.

Notice

CE0560

Declaration of conformity

Hereby, Gibson Innovations declares that this product is in compliance with the essential requirements and other relevant provisions of Directive 1999/5/EC. You can find the Declaration of Conformity on www.p4c.philips.com.

Any changes or modifications made to this device that are not expressly approved by Gibson Innovations may void the user's authority to operate the equipment.

Specifications are subject to change without notice. Gibson Innovations reserves the right to change products at any time without being obliged to adjust earlier supplies accordingly.

Disposal of your old product and batteries

Your product is designed and manufactured with high quality materials and components, which can be recycled and reused. Never dispose of your product with other household waste. Please inform yourself about the local rules on the separate collection of electrical and electronic products and batteries. The correct disposal of these products helps prevent potentially negative consequences on the environment and human health.

Your product contains batteries, which cannot be disposed of with normal household waste.

Please inform yourself about the local rules on separate collection of batteries. The correct disposal of batteries helps prevent potentially negative consequences on the environment and human health. Please visit www.recycle.philips.com for additional information on a recycling center in your area.

Information about the use of batteries:

Caution

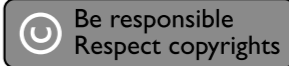
- Risk of leakage: Only use the specified type of batteries. Do not mix new and used batteries. Do not mix different brands of batteries. Observe correct polarity. Remove batteries from products that are not in use for a longer period of time. Store batteries in a dry place.
• Risk of injury: Wear gloves when handling leaking batteries. Keep batteries out of reach of children and pets.
• Risk of explosion: Do not short circuit batteries. Do not expose batteries to excessive heat. Do not throw batteries into the fire. Do not damage or disassemble batteries. Do not recharge non-rechargeable batteries.

Environmental information

All unnecessary packaging has been omitted. We have tried to make the packaging easy to separate into three materials: cardboard (box), polystyrene foam (buffer) and polyethylene (bags, protective foam sheet).

Your system consists of materials which can be recycled and reused if disassembled by a specialized company. Please observe the local regulations regarding the disposal of packaging materials, exhausted batteries and old equipment.

Copyright notice



This item incorporates copy protection technology that is protected by U.S. patents and other intellectual property rights of Rovi Corporation. Reverse engineering and disassembly are prohibited.

Trademark notice

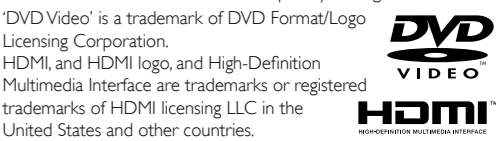
This product has been manufactured by, and is sold under the responsibility of Gibson Innovations Ltd., and Gibson Innovations Ltd. is the warrantor in relation to this products.

Philips and the Philips Shield Emblem are registered trademarks of Koninklijke Philips N.V. and are used under license from Koninklijke Philips N.V.

Manufactured under license from Dolby Laboratories. Dolby and the double-D symbol are trademarks of Dolby Laboratories. DivX®, DivX Ultra®, DivX Certified® and associated logos are trademarks of Rovi Corporation or its subsidiaries and are used under license.

DivX Ultra® Certified to play DivX® video with advanced features and premium content. ABOUT DIVX VIDEO: DivX® is a digital video format created by DivX, LLC, a subsidiary of Rovi Corporation. This is an official DivX

Certified® device that plays DivX video. Visit divx.com for more information and software tools to convert your files into DivX videos. ABOUT DIVX VIDEO-ON-DEMAND: This DivX Certified® device must be registered in order to play purchased DivX Video-on-Demand (VOD) movies. To obtain your registration code, locate the DivX VOD section in your device setup menu. Go to vod.divx.com for more information on how to complete your registration.



The Bluetooth® word mark and logos are registered trademarks owned by Bluetooth SIG, Inc. and any use of such marks by Gibson is under license. Other trademarks and trade names are those of their respective owners. Other trademarks and trade names are those of their respective owners.

The N Mark is a trademark or registered trademark of NFC Forum, Inc. in the United States and in other countries.

This apparatus includes this label:



Note

- The type plate is located on the back of the unit.

Specifications

Table with 2 columns: Specification and Value. Includes Amplifier, Rated Output Power, Frequency Response, Signal to Noise Ratio, AUDIO Input.

Disc

Table with 2 columns: Specification and Value. Includes Laser Type, Disc Diameter, Video Decoding, Video DAC.

Signal System

Table with 2 columns: Specification and Value. Includes Video Format, Video Luminance S/N, Audio DAC, Total Harmonic Distortion.

Tuner (FM)

Table with 2 columns: Specification and Value. Includes Tuning Range, Tuning grid, Sensitivity - Mono, 26dB S/N Ratio, Total Harmonic Distortion.

Speakers

Table with 2 columns: Specification and Value. Includes Speaker Impedance, Speaker Driver, Sensitivity.

Bluetooth

Table with 2 columns: Specification and Value. Includes Bluetooth version, Frequency band, Range.

Table with 2 columns: Specification and Value. Includes AC power, Operation Power Consumption, Standby Power Consumption, Composite Video Output, USB Direct.

Table with 2 columns: Specification and Value. Includes Dimensions, Main Unit, Speaker, Subwoofer.

Table with 2 columns: Specification and Value. Includes Weight, Main Unit, Speaker Box, Subwoofer.



