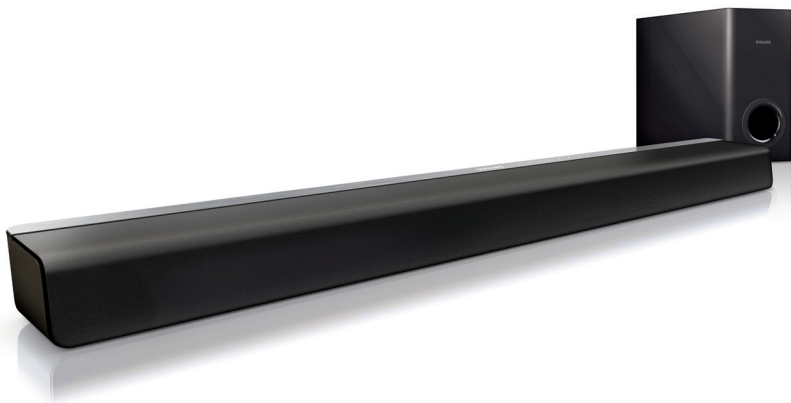


Register your product and get support at
www.philips.com/welcome

CSS2123



EN User manual

PHILIPS

Contents

1	Help and support	2
	FAQs	2
	Contact Philips	2

2	Notice	2
	Compliance	2
	Mains fuse	2
	Trademarks	2

3	Important	3
	Safety	3
	Care for your product	3
	Care of the environment	3

4	Your SoundBar	4
	Main unit	4
	Remote control	5

5	Connect your SoundBar	6
	Subwoofer	6
	Connectors	7
	Connect audio from TV and other devices	7

6	Use your SoundBar	9
	Play audio from TV or other devices	9
	Adjust the volume	9
	Choose your sound	9
	MP3 player	10
	Apply factory settings	10

7	Wall mount	10
----------	-------------------	-----------

8	Product specifications	11
----------	-------------------------------	-----------

9	Troubleshooting	12
----------	------------------------	-----------

1 Help and support

FAQs

If you have a problem, refer to the frequently asked questions (FAQs) for this SoundBar at www.philips.com/support.
If you still need help, contact Philips Consumer Care in your country.



Warning

- Do not attempt to repair your SoundBar yourself. This may cause severe injury, irreparable damage to your SoundBar, or void your warranty.

Contact Philips

If you contact Philips, you will be asked for the model and serial number of your product. The model number and serial number are on the back or bottom of your product. Note the numbers before you call Philips:

Model No. _____

Serial No. _____

2 Notice

This section contains the legal and trademark notices.

Compliance



This product is in compliance with the essential requirements and other relevant provisions of Directives 2006/95/EC (Low Voltage), 2004/108/EC (EMC).

Mains fuse

This information applies only to products with a UK mains plug.

This product is fitted with an approved molded plug. If you replace the fuse, use one with:

- the ratings shown on the plug,
- a BS 1362 approval, and
- the ASTA approval mark.

Contact your dealer if you are not sure about what type of fuse to use.

Caution: To conform with the EMC directive (2004/108/EC), do not detach the plug from the power cord.

Trademarks



Manufactured under license from Dolby Laboratories. Dolby and the double-D symbol are trademarks of Dolby Laboratories.

3 Important

Read and understand all instructions before you use your SoundBar. If damage is caused by failure to follow instructions, the warranty does not apply.

Safety

Risk of electric shock or fire!

- Never expose the product and accessories to rain or water. Never place liquid containers, such as vases, near the product. If liquids are spilt on or into the product, disconnect it from the power outlet immediately. Contact Philips Consumer Care to have the product checked before use.
- Never place the product and accessories near naked flames or other heat sources, including direct sunlight.
- Never insert objects into the ventilation slots or other openings on the product.
- Where the mains plug or an appliance coupler is used as the disconnect device, the disconnect device shall remain readily operable.
- Disconnect the product from the power outlet before lightning storms.
- When you disconnect the power cord, always pull the plug, never the cable.

Risk of short circuit or fire!

- Before you connect the product to the power outlet, ensure that the power voltage matches the value printed on the back or bottom of the product. Never connect the product to the power outlet if the voltage is different.

Risk of injury or damage to the SoundBar!

- For wall-mountable products, use only the supplied wall mount bracket. Secure the wall mount to a wall that can support the combined weight of the product and the wall mount. Koninklijke Philips Electronics N.V. bears no responsibility for improper wall mounting that results in accident, injury or damage.
- Never place the product or any objects on power cords or on other electrical equipment.
- If the product is transported in temperatures below 5°C, unpack the product and wait until its temperature matches room temperature before connecting it to the power outlet.
- Parts of this product can be made of glass. Handle with care to avoid injury and damage.

Risk of overheating!

- Never install this product in a confined space. Always leave a space of at least four inches around the product for ventilation. Ensure curtains or other objects never cover the ventilation slots on the product.

Risk of contamination!

- Do not mix batteries (old and new or carbon and alkaine, etc.).
- Danger of explosion if batteries are incorrectly replaced. Replace only with the same or equivalent type.
- Remove batteries if they are exhausted or if the remote control is not to be used for a long time.
- Batteries contain chemical substances, they should be disposed of properly.

Risk of swallowing batteries!

- The product/remote control may or may not contain a coin/button type battery, which can be swallowed. Keep the battery out of reach of children at all times! If swallowed, the battery can cause serious injury or death. Severe internal burns can occur within two hours of ingestion.
- If the battery has been swallowed, seek immediate medical attention.
- When you change the batteries, always keep all new and used batteries out of reach of children. Ensure that the battery compartment is completely secure after you replace the battery.
- If the battery compartment cannot be completely secured, discontinue use of the product. Keep out of reach of children and contact the manufacturer.

Care for your product

Use only microfiber cloth to clean the product.

Care of the environment



Your product is designed and manufactured with high quality materials and components, which can be recycled and reused.



When this crossed-out wheeled bin symbol is attached to a product it means that the product is covered by the European Directive 2002/96/EC. Please inform yourself about the local separate collection system for electrical and electronic products. Please act according to your local rules and do not dispose of your old products with your normal household waste.

Correct disposal of your old product helps to prevent potential negative consequences for the environment and human health.



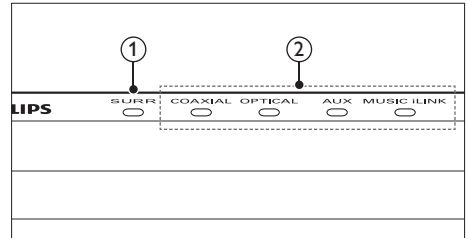
Your product contains batteries covered by the European Directive 2006/66/EC, which cannot be disposed with normal household waste.

Please inform yourself about the local rules on separate collection of batteries because correct disposal helps to prevent negative consequences for the environmental and human health.

4 Your SoundBar

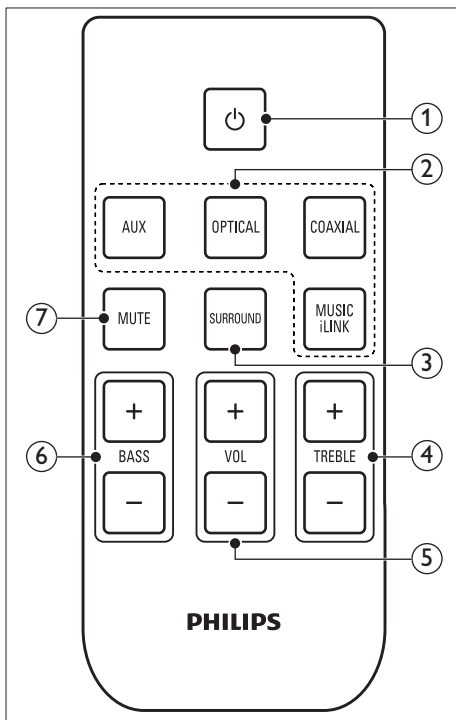
Congratulations on your purchase, and welcome to Philips! To fully benefit from the support that Philips offers, register your SoundBar at www.philips.com/welcome.

Main unit



- ① **SURR indicator**
Lights up when surround mode is turned on.
- ② **Source indicators**
 - **COAXIAL**: Lights up when you switch to coaxial input source. When Dolby signal is detected, **COAXIAL** indicator blinks for three seconds.
 - **OPTICAL**: Lights up when you switch to optical input source. When Dolby signal is detected, **OPTICAL** indicator blinks for three seconds.
 - **AUX**: Lights up when you switch to analog input source.
 - **MUSIC iLINK**: Lights up when you switch to Music iLink input source.

Remote control



- 1** **⏻ (Standby-On)**
Switch the SoundBar on or to standby.
- 2** **Source buttons**
 - **AUX**: Switch your audio source to the AUX connection.
 - **OPTICAL**: Switch your audio source to the optical connection.
 - **COAXIAL**: Switch your audio source to the coaxial connection.
 - **MUSIC iLINK**: Switch your audio source to the MUSIC iLINK connection.
- 3** **SURROUND**
Switch to virtual surround mode on or off.
- 4** **TREBLE +/-**
Increase or decrease treble.
- 5** **VOL +/-**
Increase or decrease volume.
- 6** **BASS +/-**
Increase or decrease bass.
- 7** **MUTE**
Mute or restore volume.

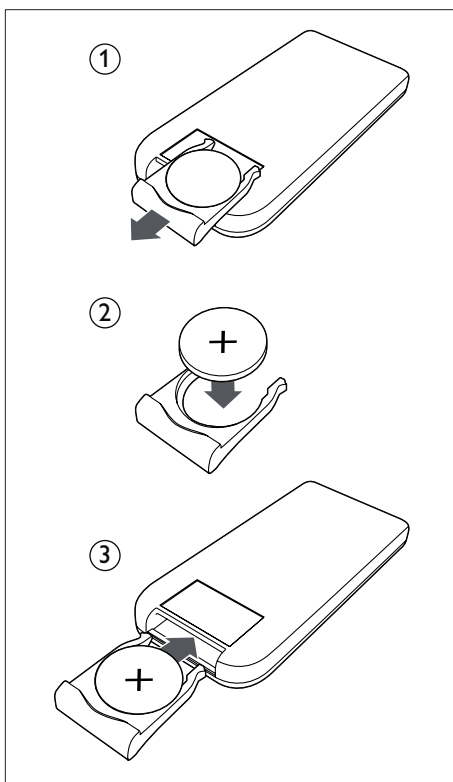
Replace battery

Warning

- Danger of explosion if battery is incorrectly replaced. Replace only with the same or equivalent type.
- The product/remote control may or may not contain a coin/button type battery, which can be swallowed. Keep the battery out of reach of children at all times!

Caution

- The battery contains perchlorate material, handle it with care. For information see www.dtsa.ca.gov/hazardouswaste/perchlorate.



- 1** Open the battery compartment.
- 2** Insert one CR2025 battery, with the polarity (+/-) as indicated.
- 3** Close the battery compartment.

5 Connect your SoundBar

This section helps you connect your SoundBar to a TV and other devices.

For information about the basic connections of your SoundBar and accessories, see the quick start guide. For a comprehensive interactive guide, see www.connectivityguide.philips.com.

Note

- For identification and supply ratings, refer to the type plate at the back or bottom of the product.
- Before you make or change any connections, make sure that all devices are disconnected from the power outlet.

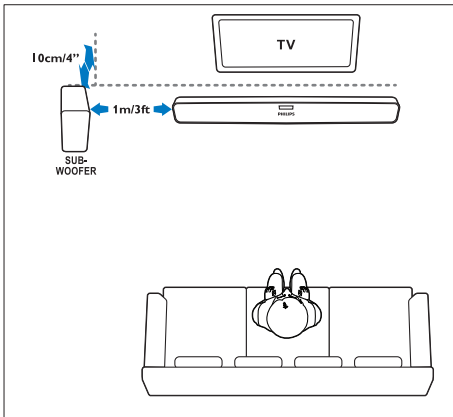
Subwoofer

Follow the steps below to position and connect your subwoofer:

Position

Place the subwoofer at least one meter (three feet) away from either to the left or right of your SoundBar, and ten centimeter away from the wall.

For best results, place your subwoofer as shown below.



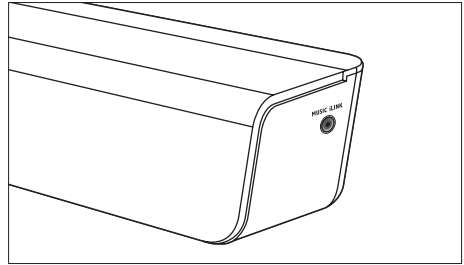
Connect

Connect your subwoofer to your SoundBar as described in the quick start guide.

Connectors

Connect other devices to your SoundBar.

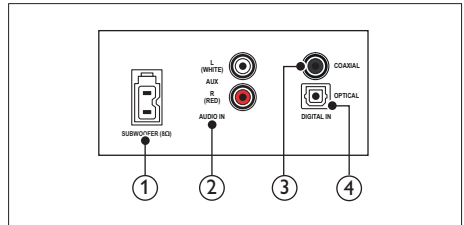
Side right



MUSIC iLINK

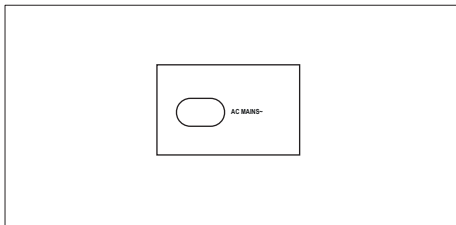
Audio input from an MP3 player.

Rear left



- 1 **SUBWOOFER**
Connect to the supplied subwoofer.
- 2 **AUDIO IN-AUX**
Connect to an analog audio output on the TV or an analog device.
- 3 **DIGITAL IN-COAXIAL**
Connect to a coaxial audio output on the TV or a digital device.
- 4 **DIGITAL IN-OPTICAL**
Connect to an optical audio output on the TV or a digital device.

Rear right



AC MAINS~

Connect to the power supply.

Connect audio from TV and other devices

Play audio from TV or other devices through your SoundBar. Use the best quality connection available on other devices.

Note

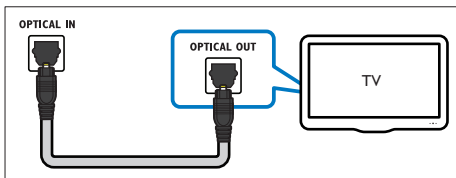
- The audio connections in this user manual are only recommendations. You can use other connections too.
- If you play audio from the TV through your SoundBar, make sure that the TV is muted.

Option 1: Connect audio through a digital optical cable

Best quality audio

Using an optical cable, connect the **OPTICAL** connector on your SoundBar to the **OPTICAL OUT** connector on the device.

The digital optical connector might be labeled **SPDIF**, **SPDIF OUT**, or **OPTICAL**.

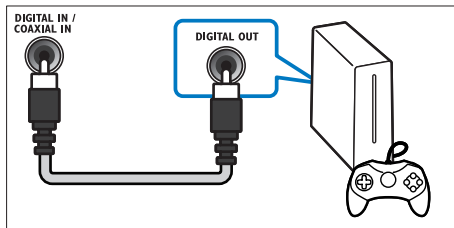


Option 2: Connect audio through a digital coaxial cable

Good quality audio

Using a coaxial cable, connect the **COAXIAL** connector on your SoundBar to the **COAXIAL/DIGITAL OUT** connector on the device.

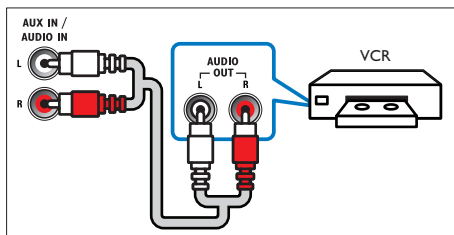
The digital coaxial connector might be labeled **DIGITAL AUDIO OUT**.



Option 3: Connect audio through analog audio cables

Basic quality audio

Using an analog cable, connect the **AUX** connectors on your SoundBar to the audio connectors on the device.



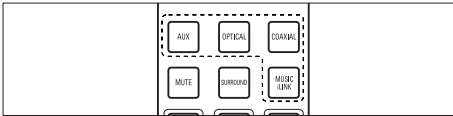
6 Use your SoundBar

This section helps you use the SoundBar to play audio from connected devices.

Before you start

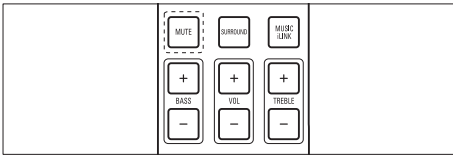
- Make the necessary connections described in the quick start guide and the user manual.
- Switch the SoundBar to the correct source for other devices.

Play audio from TV or other devices



Press the **Source buttons** to select the audio output of the connected device.

Adjust the volume



To increase or decrease volume, press **VOL +/-**.

- The **Source indicators** on the front panel blink thrice when the volume is set to either minimum or maximum.

To mute sound, press **MUTE**.

- The current **Source indicator** on the front panel blinks continuously.

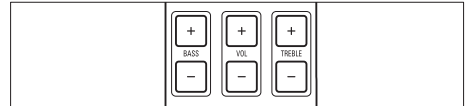
To restore the sound, press **MUTE** again or press **VOL +/-**.

Choose your sound

This section helps you choose the ideal sound for your video or music.

Change treble or bass

Change the high frequency (treble) or low frequency (bass) settings of the SoundBar to suit your video or music.

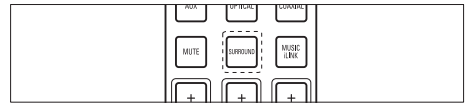


Press **TREBLE +/-** or **BASS +/-** to increase or decrease treble or bass.

- The **Source indicators** on the front panel blink thrice when the treble or bass is set to either minimum or maximum.

Surround sound mode

Experience an immersive audio experience with surround sound modes.

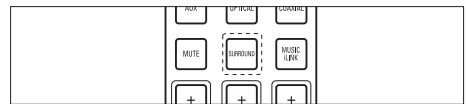


Press **SURROUND** repeatedly to switch surround mode on or off.

- ↳ When surround mode is on, the **SURR** on the front panel lights up.

Night mode

For quiet listening, decrease the volume of loud sounds when you play discs. Night mode is only available for Dolby encoded TV programs, DVD, and Blu-ray discs.



Press and hold **SURROUND** to switch night mode on or off.

- ↳ When the night mode is on, **AUX indicator** on the front panel blinks twice.

MP3 player

Connect your MP3 player to play your audio files or music.

What you need

- An MP3 player.
- A 3.5mm stereo audio cable.

Play music

- 1 Connect the MP3 player to the SoundBar as described in the Quick start guide.
- 2 Press **MUSIC iLINK**.
↳ **MUSIC iLINK indicator** on the front panel lights up.
- 3 Press the buttons on the MP3 player to select and play audio files or music.

Apply factory settings

You can reset your SoundBar to the default settings programmed at the factory.

Within three seconds, press **BASS+**, **VOL-**, and **TREBLE+**.

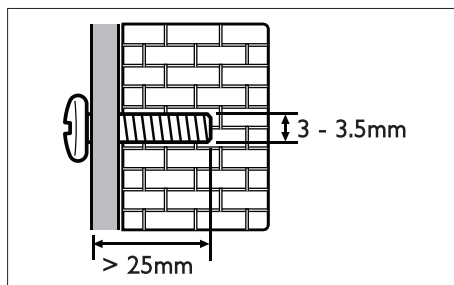
- ↳ When the restore factory settings process is complete, the SoundBar automatically switches off and turns back on again.

7 Wall mount

Before you mount your SoundBar on the wall, read all safety precautions (see 'Safety' on page 3). If you have any query, contact Philips Consumer Care in your country.

Screw length/diameter

Depending on the type of wall, make sure that you use screws of a suitable length and diameter to mount this SoundBar:



For information about how to wall your SoundBar, see the Quick start guide.

8 Product specifications

Note

- Specifications and design are subject to change without notice.

Amplifier

- Total output power:
 - Europe/Asia Pacific/China/Russia/India: 60W RMS (30%THD)
 - Latin America: 48W RMS (10%THD)
- Frequency response: 20 Hz-20 kHz / ± 3 dB
- Signal-to-noise ratio: > 65 dB (CCIR) / (A-weighted)
- Input sensitivity:
 - AUX: 600 mV
 - Music iLink: 250 mV

Audio

- S/PDIF Digital audio input:
 - Coaxial: IEC 60958-3
 - Optical: TOSLINK

Main unit

- Power supply: 110-240 V~, 50-60 Hz
- Power consumption: 20 W
- Standby power consumption: ≤ 0.5 W
- Speaker impedance: 4 ohm woofer; 4 ohm tweeter
- Speaker drivers: 25 x 120 mm (1 x 5") woofer; 38 mm (1.5") tweeter
- Frequency response: 150 Hz-20 kHz
- Dimensions (WxHxD): 708 x 47 x 65 mm
- Weight: 1.03 kg

Subwoofer

- Impedance: 8 ohm
- Speaker drivers: 130 mm (5.25") woofer
- Frequency response: 20 Hz-150 Hz
- Dimensions (WxHxD): 165 x 240 x 295 mm
- Weight: 2.6 kg
- Cable length: 3 m

Remote control batteries

- 1 x CR2025

9 Troubleshooting

Warning

- Risk of electric shock. Never remove the casing of the product.

To keep the warranty valid, never try to repair the product yourself.

If you have problems using this product, check the following points before you request service. If you still have a problem, get support at www.philips.com/support.

Sound

No sound from SoundBar speakers.

- Connect the correct audio cable from your SoundBar to your TV or other devices.
- On your SoundBar remote control, press the **Source buttons** to select the correct audio input.
- Make sure that the SoundBar is not muted. Press VOL +/- to restore the sound (see 'Adjust the volume' on page 9).

Distorted sound or echo.

- If you play audio from the TV through the SoundBar, make sure that the TV is muted.

