

Always there to help you  
Register your product and get support at  
[www.philips.com/support](http://www.philips.com/support)



Short User Manual

BT6000

PHILIPS



Specifications are subject to change without notice.  
2015 © Gibson Innovations Limited. All rights reserved.  
This product has been manufactured by, and is sold  
under the responsibility of Gibson Innovations Ltd., and  
Gibson Innovations Ltd. is the warrantor in relation to  
this product.  
Philips and the Philips Shield Emblem are registered  
trademarks of Koninklijke Philips N.V. and are used  
under license from Koninklijke Philips N.V.

BT6000\_94\_SUM\_V2.0



1 Important

Warning

- Never remove the casing of this speaker.
- Never place this speaker on other electrical equipment.
- Keep this speaker away from direct sunlight, naked flames or heat.
- Make sure that you always have easy access to the power cord, plug, or adaptor to disconnect the speaker from the power.

- Make sure that there is enough free space around the speaker for ventilation.
- After use under humid circumstance, immediately clean the product with a soft dry cloth.
- The battery shall not be exposed to excessive heat such as sunshine, fire or the like.
- The adaptor shall not be exposed to dripping or splashing.
- No objects filled with liquids shall be placed on the adaptor.
- Use only power supplies listed in the user manual.
- Where the plug of the Direct Plug-in Adapter is used as the disconnect device, the disconnect device shall remain readily operable.

Note

- The type plate is located on the bottom of the apparatus.

Notice

Any changes or modifications made to this device that are not expressly approved by Gibson Innovations may void the user's authority to operate the equipment.

This product is designed to be waterproof in compliance with IEC 60529 IPX4.

Care of the environment

Disposal of your old product

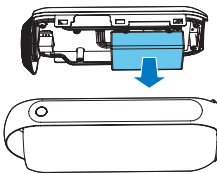
Your product is designed and manufactured with high quality materials and components, which can be recycled and reused.

Do not throw away the product with the normal household waste at the end of its life, but hand it in at an official collection point or recycling. By doing this, you help to preserve the environment.

Caution

- Removal of the built-in battery invalidates the warranty and may destroy the product.

Always bring your product to a professional to remove the built-in battery.



Environmental information

All unnecessary packaging has been omitted. We have tried to make the packaging easy to separate into three materials: cardboard (box), polystyrene foam (buffer) and polyethylene (bags, protective foam sheet.)

Your system consists of materials which can be recycled and reused if disassembled by a specialized company. Please observe the local regulations regarding the disposal of packaging materials, exhausted batteries and old equipment.

Trademark notice

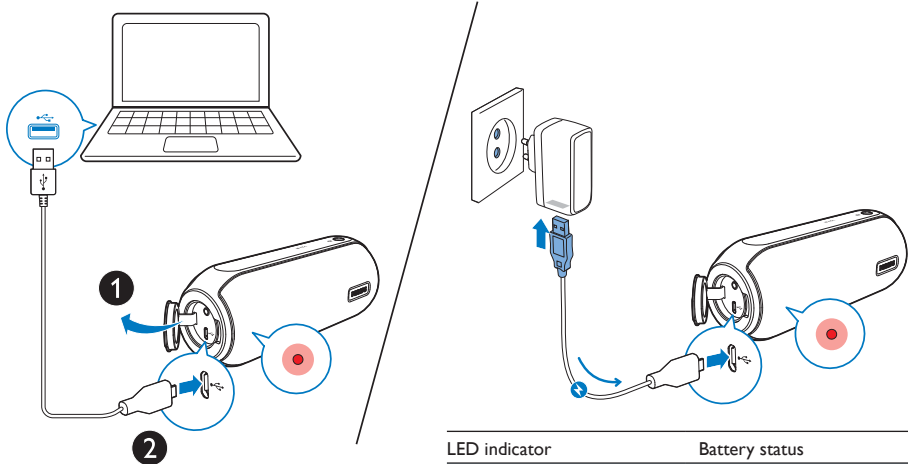
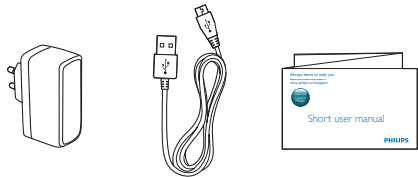
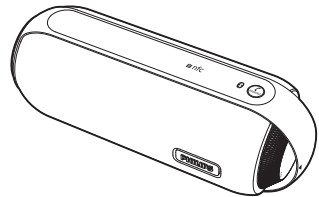
The Bluetooth® word mark and logos are registered trademarks owned by Bluetooth SIG, Inc. and any use of such marks by Gibson Innovations Limited is under license. Other trademarks and trade names are those of their respective owners.



The 'N' Mark is a trademark or registered trademark of NFC Forum, Inc. in the United States and in other countries.



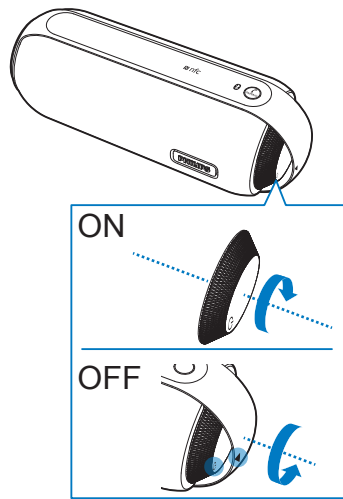
This is CLASS II apparatus with double insulation, and no protective earth provided.



LED indicator	Battery status
Solid red	Under charging
Off	Fully charged

Note:

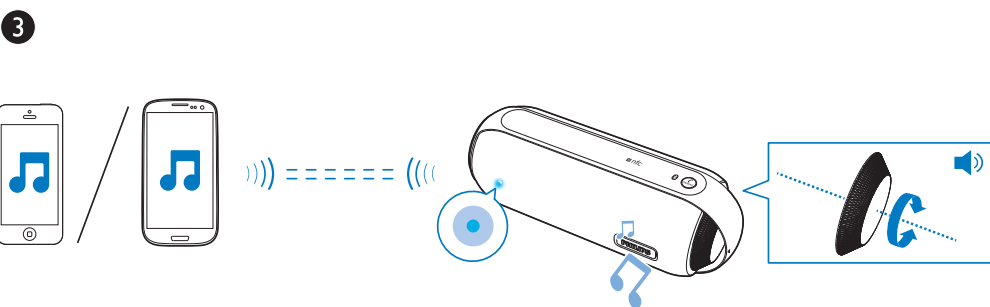
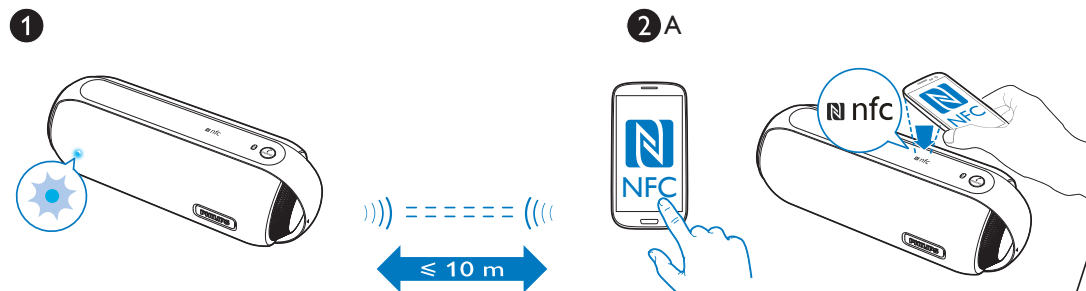
- The speaker can operate on either built-in battery or AC power.
- The red LED indicator flashes when the battery level is low.



To turn the speaker on or off, rotate the knob clockwise or anticlockwise until you hear a click.

Note:

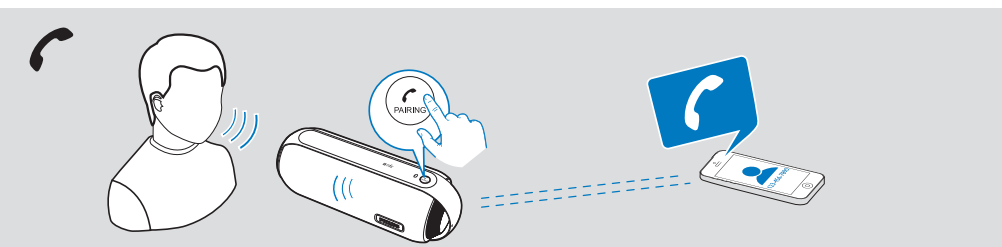
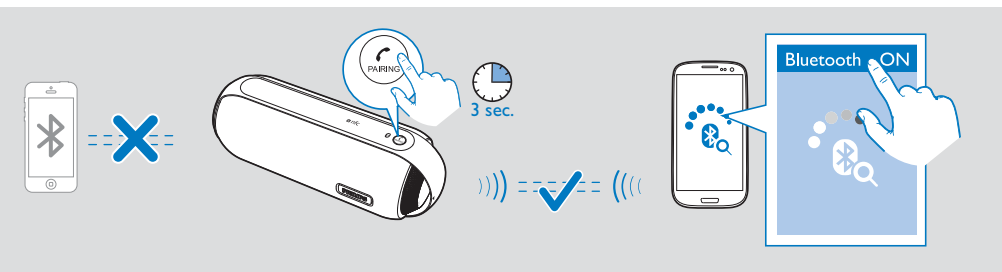
- The speaker switches to standby mode after 15 minutes of inactivity.
- If the LED indicator is solid red, and the speaker has no response when pressing any key, it means the speaker is in DEMO mode. Press and hold PAIRING for 15 seconds to exit this mode.





#### Play from Bluetooth-enabled devices

- 1 Turn on the speaker.
  - ↳ The blue LED indicator flashes.
- 2 **Option A:** For a Bluetooth device that supports NFC:  
1) Enable NFC feature on your device. 2) Tap the NFC tag on the top of the speaker with the NFC area of your Bluetooth device. 3) Follow the on-screen instructions to complete the pairing and connection.  
**Option B:** For other Bluetooth devices: 1) On your Bluetooth device, enable Bluetooth and search for Bluetooth devices. 2) Select **[Philips BT6000]** displayed on your device for pairing. If necessary, enter default password "0000".
  - ↳ After successful connection, the speaker beeps twice, and the LED indicator turns solid blue.
- 3 Play audio on the Bluetooth device.
  - ↳ Audio streams from your device to the speaker.





**Tip:** Before connecting another Bluetooth device, disconnect the current device first.



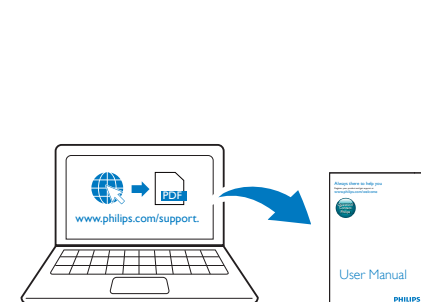
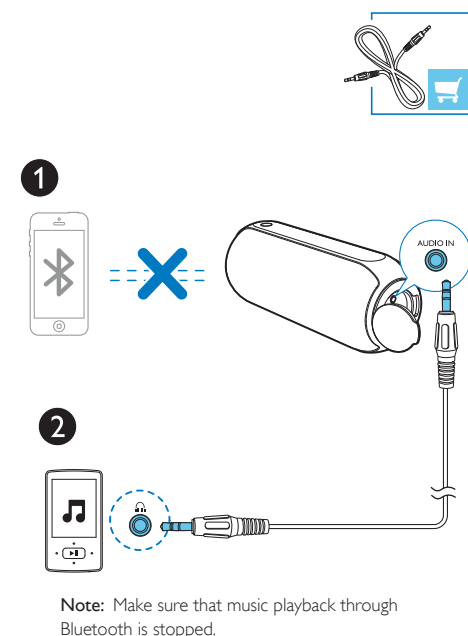
When there is no incoming call:

Action	Function
 3 sec.	Enter Bluetooth pairing mode.
 3 sec.	Disconnect current Bluetooth connection.

When there is an incoming call:

Action	Function
	Answer an incoming call.
	During a call, End the current call.
	Reject an incoming call.
 3 sec.	During a call, transfer the call to your mobile device.

**Note:** Music play pauses when there is an incoming call.



To download the full user manual, visit [www.philips.com/support](http://www.philips.com/support).

#### Specifications

##### Amplifier

Rated Output Power	12W RMS
Frequency Response	40 -20000 Hz, ±3 dB
Signal to Noise Ratio	> 65 dBA

##### Speaker

Speaker Impedance	8 ohm
Sensitivity	>85dB/m/W± 2dB/m/W

##### Bluetooth

Bluetooth Version	V4.0
Supported Profiles	HFP, A2DP, AVRCP
Range	10 m (Free space)

#### General information

##### Power Supply

- AC Power (power adapter A)	Brand name: PHILIPS; Model: AKN2G-0500200VU; Input: 100-240V~, 50/60 Hz, 0.35 A; Output: 5 V === 2 A;
------------------------------	-------------------------------------------------------------------------------------------------------------------

- AC Power (power adapter B)	Brand name: PHILIPS; Model: GME10C-050200FQU; Input: 100-240V~, 50-60 Hz, 0.28 A; Output: 5 V === 2 A;
------------------------------	--------------------------------------------------------------------------------------------------------------------

- Built-in Battery	Li-ion battery (3.7V, 4400 mAh)
--------------------	------------------------------------

Standby Power Consumption	<1 W
---------------------------	------

Eco Standby Power Consumption	<0.5 W
-------------------------------	--------

Dimensions - Main Unit (W x H x D)	188 x 70 x 71 mm
---------------------------------------	------------------

Weight - Main Unit	0.5 kg
--------------------	--------