

Always there to help you

Register your product and get support at
www.philips.com/support

AJ3123



User manual

PHILIPS

Contents

1	Important	2
----------	------------------	----------

2	Your clock radio	3
	What's in the box	3

3	Get started	4
	Install battery	4
	Connect power	4
	Set time	4

4	Listen to FM radio	5
	Tune to FM radio stations	5
	Store FM radio stations manually	5
	Select a preset radio station	5

5	Other features	6
	Set alarm timer	6
	Set sleep timer	7

6	Product information	8
	Specifications	8

7	Troubleshooting	9
----------	------------------------	----------

8	Notice	10
----------	---------------	-----------

1 Important

- Do not use this apparatus near water.
- Install in accordance with the manufacturer's instructions.
- Do not install near any heat sources such as radiators, heat registers, stoves, or other apparatus (including amplifiers) that produce heat.
- Protect the power cord from being walked on or pinched, particularly at plugs, convenience receptacles, and the point where they exit from the apparatus.
- Only use attachments/accessories specified by the manufacturer.
- Unplug this apparatus during lightning storms or when unused for long periods of time.
- Refer all servicing to qualified service personnel. Servicing is required when the apparatus has been damaged in any way, such as power-supply cord or plug is damaged, liquid has been spilled or objects have fallen into the apparatus, the apparatus has been exposed to rain or moisture, does not operate normally, or has been dropped.
- Battery usage CAUTION – To prevent battery leakage which may result in bodily injury, property damage, or damage to the unit:
 - Install all batteries correctly, + and - as marked on the unit.
 - Do not mix batteries (old and new or carbon and alkaline, etc.).
 - Remove batteries when the unit is not used for a long time.
- Batteries (battery pack or batteries installed) shall not be exposed to excessive heat such as sunshine, fire or the like.
- Apparatus shall not be exposed to dripping or splashing.
- Do not place any sources of danger on the apparatus (e.g. liquid filled objects, lighted candles).

- Where the MAINS plug or an appliance coupler is used as the disconnect device, the disconnect device shall remain readily operable.



Note

- The type plate is located on the bottom of the apparatus.

2 Your clock radio

Congratulations on your purchase, and welcome to Philips! To fully benefit from the support that Philips offers, register your product at www.philips.com/support.

What's in the box



3 Get started

Always follow the instructions in this chapter in sequence.

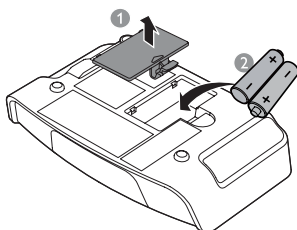
Install battery

The batteries can only back up clock and alarm settings.

! Caution

- Risk of explosion! Keep the batteries away from heat, sunshine or fire. Never discard batteries in fire.
- The batteries contains chemical substances, so they should be disposed of properly.

Insert 2 AAA batteries with correct polarity (+/-) as illustrated.



* Tip

- The display backlight is off when AC power is disconnected.

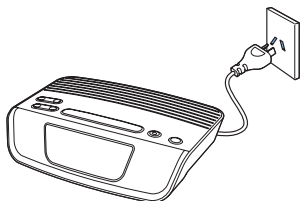
Connect power

! Caution

- Risk of product damage! Make sure that the power voltage corresponds to the voltage printed on the back or underside of the clock radio.
- Risk of electric shock! When you unplug the power adapter, always pull the plug from the socket. Never pull the cord.

☰ Note

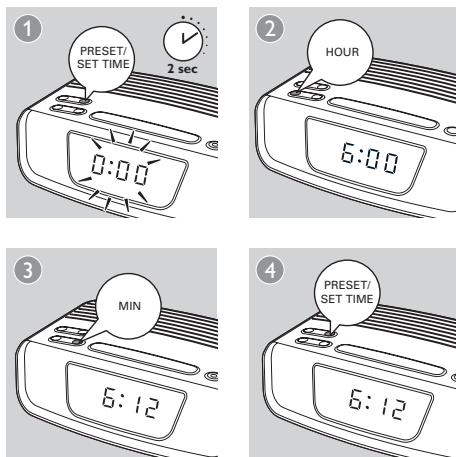
- The type plate is located at the bottom of the clock radio.



Set time

☰ Note

- You can only set time in standby mode.



4 Listen to FM radio



Tip

- To remove a pre-stored station, store another station in its place.



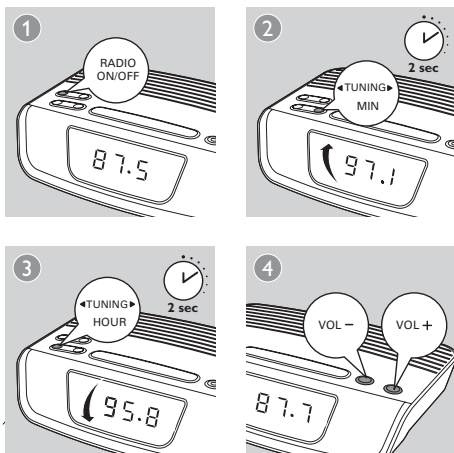
Note

- Keep the clock radio away from other electronic devices to avoid radio interference.
- For better reception, fully extend and adjust the position of the FM antenna.

Select a preset radio station

In tuner mode, press **PRESET** repeatedly to select a preset number.

Tune to FM radio stations



Store FM radio stations manually

You can store up to 10 FM radio stations.

- 1 Tune to an FM radio station.
- 2 Press and hold **PRESET** for two seconds.
↳ The preset number begins to blink.
- 3 Press **◀ TUNING ▶** repeatedly to select a number.
- 4 Press **PRESET** again to confirm.
- 5 Repeat steps 1 to 4 to store other stations.

5 Other features

Set alarm timer

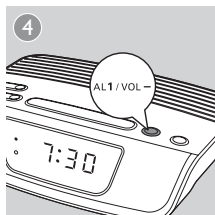
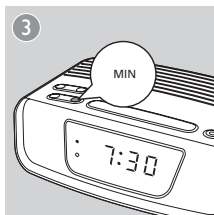
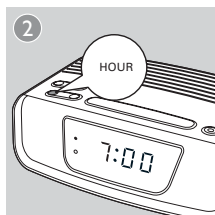
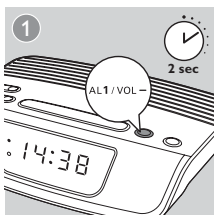
Set alarm

Note

- You can only set the alarm in standby mode.
- Make sure that you have set the clock correctly.

Follow the illustration to set the first alarm.

- **AL1**: set the first alarm.
- **AL2**: set the second alarm.



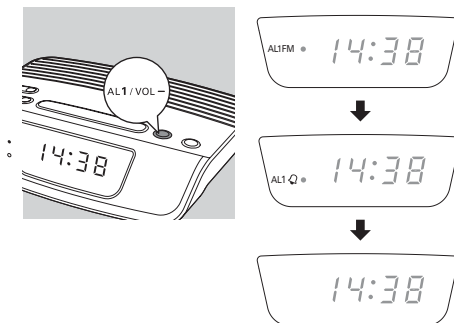
Tip

- The clock radio exits alarm setting mode when being idle for 10 seconds.

Select alarm source

You can select FM radio or buzzer as the alarm source.

↳ The corresponding alarm icon lights up.



Note

- If FM radio is selected as alarm source, when alarm sounds, volume rises gradually. You cannot adjust the alarm volume manually.
- If Buzzer is selected as alarm source, the alarm volume will be at default level and cannot be adjusted.

Activate/deactivate alarm timer

Press **AL1** or **AL2** repeatedly to activate or deactivate the alarm timer.

- ↳ If the alarm timer is deactivated, the alarm indicator turns off.
- ↳ The alarm repeats ringing for the next day.

Snooze the alarm

When alarm sounds, press **SNOOZE**.

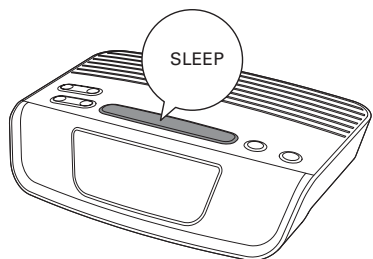
- ↳ The alarm snoozes and repeats ringing nine minutes later.

Set sleep timer

This clock radio can switch to standby mode automatically after a preset period.

To deactivate the sleep timer:

- Press **SLEEP** repeatedly until **[OFF]** (off) appears.



15 → 30 → 60 → 90 → 120



6 Product information

Note

- Product information is subject to change without prior notice.

Specifications

Amplifier

Total Output Power	200 mW
--------------------	--------

Tuner (FM)

Tuning range	87.5-108 MHz
--------------	--------------

Tuning grid	100 KHz
-------------	---------

Sensitivity

- Mono, 26 dB S/N Ratio	<22 dBf
-------------------------	---------

- Stereo, 46 dB S/N Ratio	<51.5 dBf
---------------------------	-----------

Total Harmonic Distortion	<3%
---------------------------	-----

Signal to Noise Ratio	>50 dBA
-----------------------	---------

General information

AC power	220 - 240 V~, 50/60 Hz
----------	---------------------------

Operation Power	<3 W
-----------------	------

Consumption

Standby Power	<2 W
---------------	------

Consumption

Dimensions: Main Unit (W x H x D)	177 x 48 x 123 mm
--------------------------------------	-------------------

Weight: Main Unit	0.4 kg
-------------------	--------

7 Troubleshooting



Warning

- Never remove the casing of this device.

To keep the warranty valid, never try to repair the system yourself.

If you encounter problems when using this device, check the following points before requesting service. If the problem remains unsolved, go to the Philips Web page (www.philips.com/support). When you contact Philips, make sure that the device is nearby and the model number and serial number are available.

No power

- Ensure that the AC power plug of the unit is connected properly.
- Ensure that there is power at the AC outlet.

No sound

- Adjust the volume.

No response from the unit

- Disconnect and reconnect the AC power plug, then turn on the unit again.

Poor radio reception

- Increase the distance between the unit and other electrical appliances.
- Adjust the position of the antenna for better reception.

Alarm does not work

- Set the clock/alarm correctly.

Clock/alarm setting erased

- Power has been interrupted or the power plug has been disconnected.
- Reset the clock/alarm.

8 Notice

Any changes or modifications made to this device that are not expressly approved by Gibson Innovations may void the user's authority to operate the equipment.

Disposal of your old product



Your product is designed and manufactured with high quality materials and components, which can be recycled and reused.

Do not throw away the product with the normal household waste at the end of its life, but hand it in at an official collection point or recycling. By doing this, you help to preserve the environment.

Environmental information

All unnecessary packaging has been omitted. We have tried to make the packaging easy to separate into three materials: cardboard (box), polystyrene foam (buffer) and polyethylene (bags, protective foam sheet.)

Your system consists of materials which can be recycled and reused if disassembled by a specialized company. Please observe the local regulations regarding the disposal of packaging materials, exhausted batteries and old equipment.



2015 © Gibson Innovations Limited. All rights reserved.
This product has been manufactured by, and is sold under the responsibility of Gibson Innovations Ltd., and Gibson Innovations Ltd. is the warrantor in relation to this product.
Philips and the Philips Shield Emblem are registered trademarks of Koninklijke Philips N.V. and are used under license from Koninklijke Philips N.V.

AJ3123_77_CCR_V2.0

