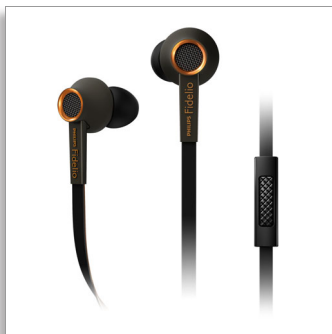




Philips Fidelio  
Headphones with mic

### High resolution audio

In-ear  
Ultra-soft silicone caps  
Flat cable



S2KB

## High fidelity, premium quality

Wherever you go

Philips Fidelio S2 headphones are precisely engineered to deliver natural, balanced sound, revealing every details as the artist intended. Amazing sound presented in a lightweight yet durable design for true comfort and pleasure on the go.

#### Designed for precision

- High Resolution audio reproduces music in its purest form
- Layered motion control drivers for refined high frequencies
- High-powered 13.5mm neodymium drivers for exceptional sound
- Engineered metal housing reduces vibration and resonance
- Handpicked, tuned and tested drivers for a precise match

#### Listen in comfort

- Copper alloy outer housing for lightweight durability
- Anti-scratch matt coating
- Ergonomic earphones fit perfectly while dispersing pressure
- 2 Comply™ Foam Tips for comfy fit and noise isolation
- Ultra-soft silicone tips in 5 sizes for a custom, snug fit

#### Created for convenience

- Durable flat cable keeps your headphones tangle free
- Switch between music and calls with in-line control and mic



**PHILIPS**  
Fidelio

Headphones with mic  
High resolution audio In-ear, Ultra-soft silicone caps, Flat cable

## Highlights

### High resolution audio

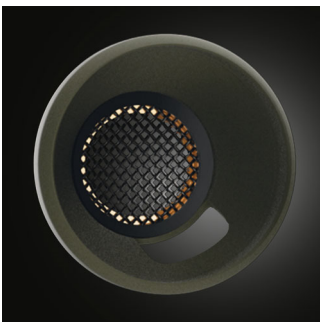
High Resolution Audio offers the best in audio performance, reproducing original studio master recordings more faithfully than 16bit/44.1kHz CD formats. This uncompromising quality makes High Resolution Audio the best sound companion for the music lover. Fidelio headphones meet the stringent standards required for the Hi-Res Audio stamp of quality. Whether enjoying your Hi-Res collection or a more traditional music source, the smooth extended high frequencies of the Fidelio headphone range help you get more from your music.

### 13.5mm neodymium drivers



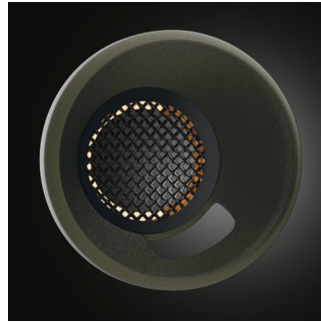
Each speaker driver is carefully hand picked, tuned and tested before being paired to ensure delivery of the most balanced, natural sound. The 13.5mm drivers utilize high power neodymium magnets to deliver deep bass impact, transparent mid-range and refined high frequencies.

### Copper alloy outer housing



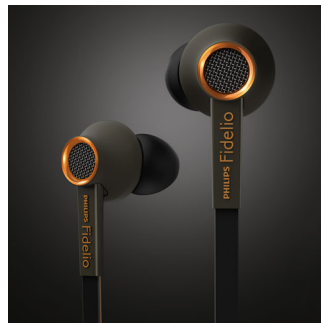
Copper alloy outer housing for lightweight durability

### Engineered metal housing



The metal housing is meticulously engineered to reduce resonance and vibration, delivering authentically precise sound marked by incredible sound detail.

### Handpicked, tuned and tested



Each speaker driver is specially tested and hand picked as ideal stereo pairs, together delivering superbly deep bass, transparent mid-range and refined high frequencies.

### Ergonomic earphones



The Fidelio S2 earphones are ergonomically shaped to fit your ear's natural curve, all the while dispersing pressure. Its lightweight copper alloy construction and superior

S2KB/00

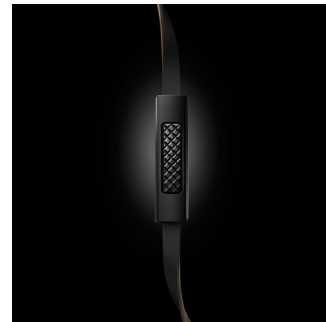
materials ensure long-lasting comfort, allowing you to experience true comfort as you enjoy your music to the fullest.

### In-line control and mic



The Fidelio S2 in-ear headphones feature an in-line remote and microphone so you can switch easily between your music and calls. Stay connected with important people – and your music, always.

### Soft and durable flat cable



Every aspect of your Fidelio in-ear headphones is carefully designed for an exceptional music enjoyment experience – always. Its innovative dual-color flat cable – made from high quality, durable yet stylish material – has anti-tangle properties, allowing you to freely get into your music on the go, without spending any time and energy sorting out the cable. Smart, smooth and easy all the way.

### Anti-scratch matt coating

The ergonomically designed earshell is protected by a matt finish, which not only imparts a premium look and feel but also durability and resistance to scratches. The protective coating makes the earphones easy to clean and even easier to bring along with you anywhere you go. Just a wipe and they'll look as good as new.

# Specifications

## Sound

- Acoustic system: Semi-closed
- Frequency response: 5- 40 000 Hz
- Sensitivity: 107 dB
- Speaker diameter: 13.5 mm
- Maximum power input: 40 mW
- Impedance: 22 ohm

## Connectivity

- Cable Connection: 3.5mm 4 pole (1.2M)
- Compatible with: iPhone®, BlackBerry®, HTC, LG, MOTOROLA, Sony, Nokia\*, SAMSUNG\*.  
\*Extra connector available through customer support for Sony Ericsson, older models from NOKIA and SAMSUNG

## Accessories

- Storage pouch



Issue date 2016-03-09

Version: 7.0.3

12 NC: 8670 001 10433  
EAN: 06 92341 07260 53

© 2016 Koninklijke Philips N.V.  
All Rights reserved.

Specifications are subject to change without notice.  
Trademarks are the property of Koninklijke Philips N.V.  
or their respective owners.

[www.philips.com](http://www.philips.com)