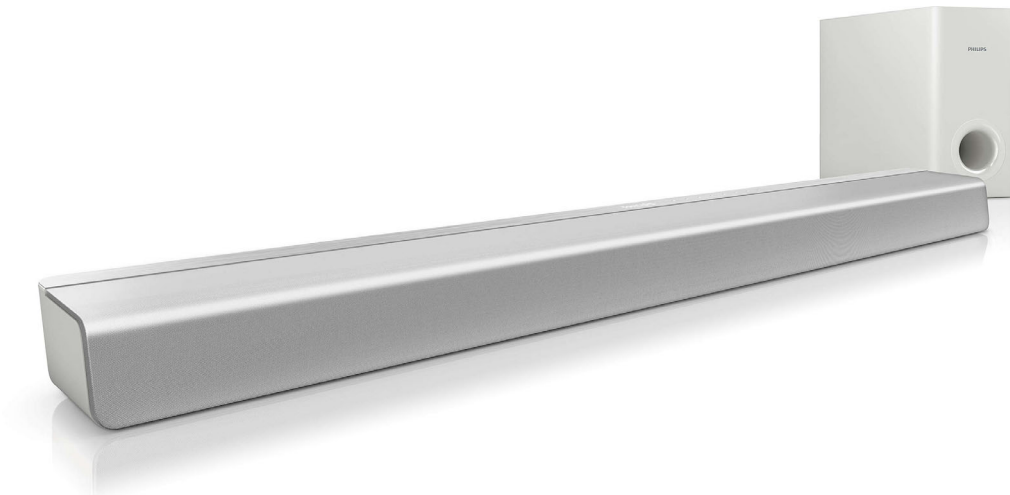


Philips
Soundbar speaker

Virtual surround

External subwoofer
Opt, Coax, Aux in, Audio in

CSS2113



Powerful sound for any TV

with subwoofer

Don't judge by its size, because this small soundbar packs a lot of punch! No more muffled dialogues with 2 dedicated tweeters. DoubleBASS and Virtual Surround Sound technology add excitement and surround sound to the movie.

Connect and enjoy all your entertainment

- Works with TVs, BD/DVD players, gaming consoles, MP3 players
- Enjoy music from iPod/iPhone/iPad with Music iLink

Designed for simplicity

- Low-rise profile for the perfect fit in front of your TV
- Ultra-compact soundbar—just 70 cm/28" wide

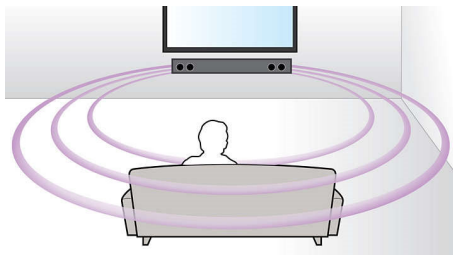
Richer sound for watching TV and movies

- Virtual Surround Sound for a realistic movie experience
- DoubleBASS technology for fuller and deeper bass
- Separate subwoofer adds a thrill to the action

PHILIPS

Highlights

Virtual Surround Sound



Philips Virtual Surround Sound produces rich and immersive surround sound from a less than five-speaker system. Highly advanced spatial algorithms faithfully replicate the sonic characteristics that occur in an ideal 5.1-channel environment. Any high quality stereo source is transformed into true-to-life, multi-channel surround sound. No need to purchase extra speakers, wires or speaker stands to appreciate room-filling sound.

DoubleBASS technology



DoubleBASS ensures you hear even the deepest bass tones from compact-sized subwoofers. It captures low frequencies and recreates them in the audible range of the subwoofer - delivering sound with more boom and panache, and ensuring you get a full, uncompromised listening experience.

Music iLink



Philips Music iLink allows you to easily play your music directly from your iPod/iPhone/

iPad, MP3 player or laptop via a simple connection to your home theatre. Simply connect your audio device to the Music iLink jack to enjoy your music with the superior sound quality of the Philips home theatre.

Low-rise profile



Low-rise profile for the perfect fit in front of your TV

Separate subwoofer

Separate subwoofer adds a thrill to the action

Ultra-compact soundbar

Ultra-compact soundbar—just 70 cm/28" wide

Works with multiple devices

Works with TVs, BD/DVD players, gaming consoles, MP3 players

Specifications

Sound

- Sound Enhancement: DoubleBass, FullSound, Night Mode, Treble and Bass Control
- Subwoofer output power: 30 W
- Speaker output power: 15 W x 2
- Total Power RMS @ 30% THD: 60 W

Loudspeakers

- Loudspeaker types: Integrated with main unit
- Subwoofer freq range: 20–150 Hz
- Subwoofer driver: 1 x 6.5" woofer
- Subwoofer type: Passive
- Subwoofer impedance: 8 ohm
- Speaker Drivers per side: 1 x 5" woofer, 1 x 1.5" Mylar tweeter
- Speaker Impedance: 4 ohm

Connectivity

- Front/Side connections: Music iLINK
- Rear Connections: AUX IN 1, Digital coaxial in, Digital optical in, Subwoofer out

Power

- Power consumption: 20 W

- Power supply: 220-240 V, 50 Hz
- Standby power consumption: < 0.5 W

Accessories

- Compatible accessories: Screw x 2, Wall plug x 2
- Included accessories: 1 x CR2025 Battery, Power cord, Quick start guide, Remote Control, Safety and Legal Leaflet, Trademarks Sheet, World Wide Warranty leaflet

Dimensions

- Main Unit (W x H x D): 708 x 47 x 65 mm
- Weight incl. Packaging: 5.4 kg
- Main Unit Weight: 1.03 kg
- Packaging (W x H x D): 756 x 395 x 220 mm
- Subwoofer (W x H x D): 165 x 295 x 240 mm
- Subwoofer Weight: 2.6 kg
- Subwoofer cable length: 3.3 m

Sustainability

- Packaging: 80% recycled corrugated board, Soya based ink



Issue date 2024-04-13

Version: 10.5.8

EAN: 87 12581 62245 9

© 2024 Koninklijke Philips N.V.
All Rights reserved.

Specifications are subject to change without notice.
Trademarks are the property of Koninklijke Philips N.V.
or their respective owners.

www.philips.com