

MP3-CD Soundmachine

Register your product and get support at www.philips.com/welcome

User Manual

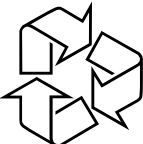
AZ1856



PHILIPS

Meet Philips at the Internet
<http://www.philips.com>

English

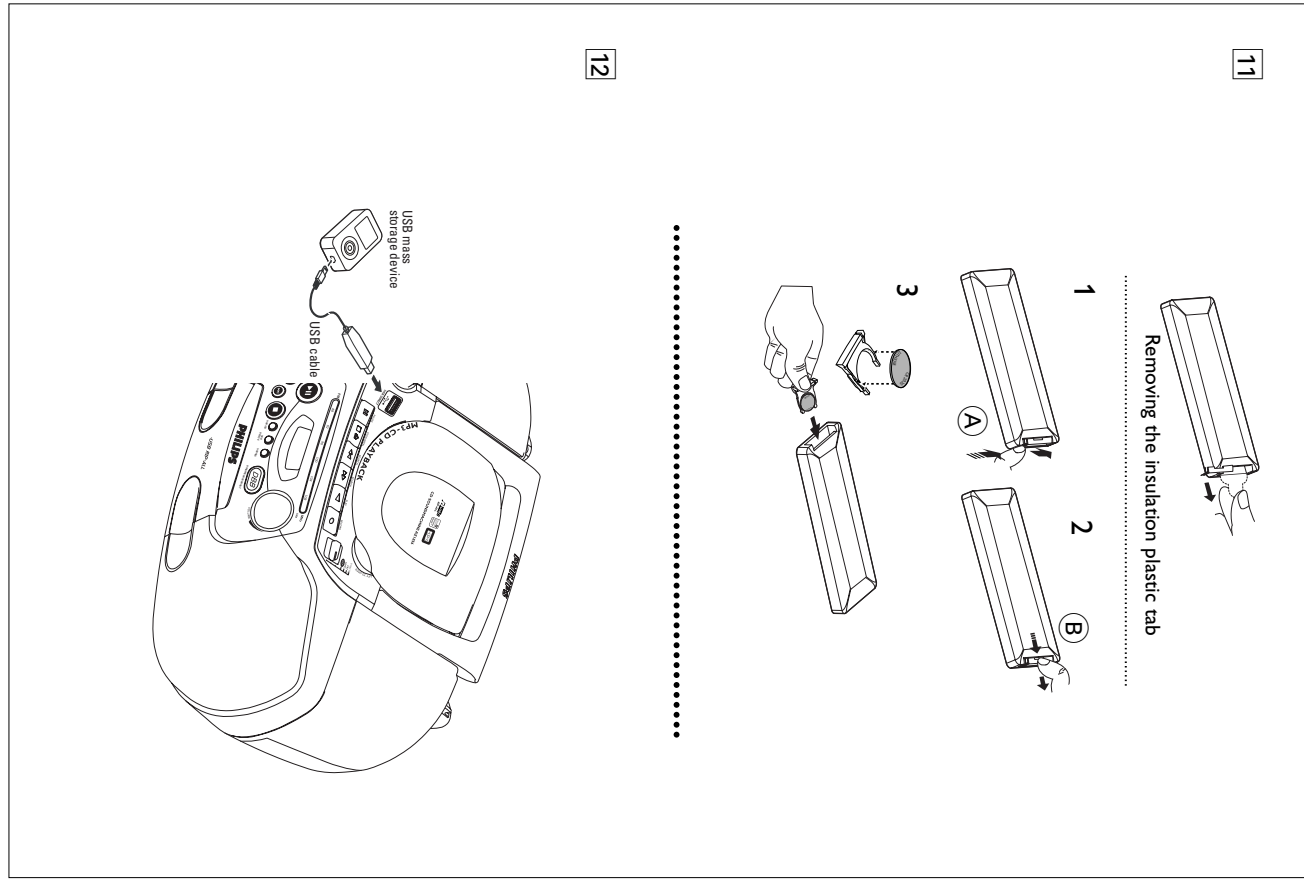
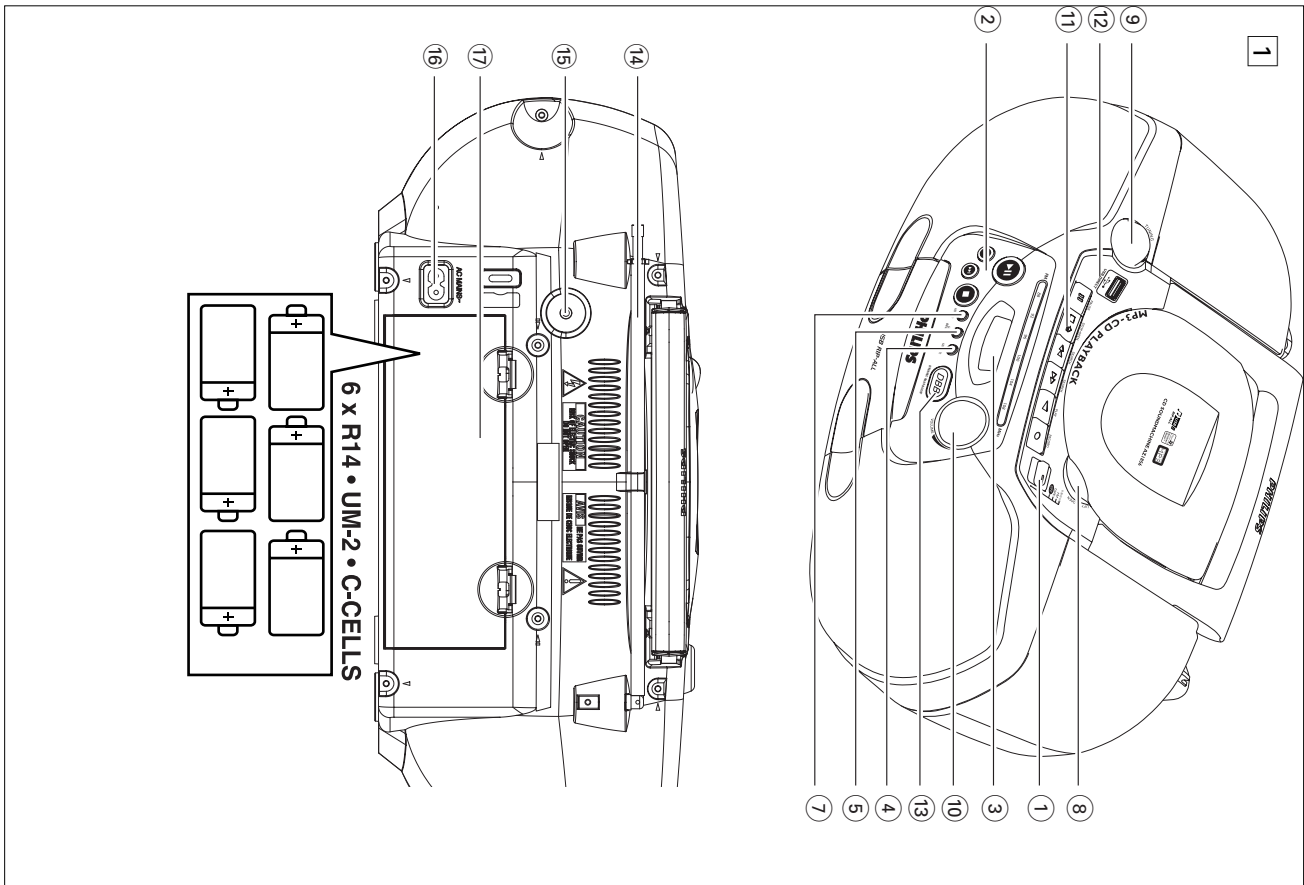


AZ1856



Printed in China

PDCC-ZHZC-0734

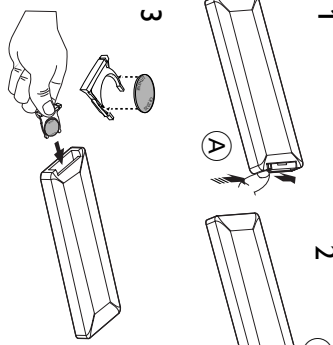


English

Congratulations on your purchase and welcome to Philips!
To fully benefit from the support that Philips offers, register your product at www.philips.com/welcome.

Supplied accessories

- AC power cord
- Remote control



.....

- Top and front panels (See [1])**
Source selector: DISC/USB, FM, TAPE.
 - selects CD/MP3 CD (or USB mode) or radio
 - switches off the set
- PI** – starts or pauses disc/USB playback
- For disc/USB play:**
 - skips to the beginning of a current/previous/ later track
 - fast searches backwards and forwards within a track
 - stops disc/USB playback
- Display** – shows disc/USB play/functions
- USB REC** – copy one file or all files of a disc to an external portable USB storage device/MP3 player
- USB DELETE** – delete one file or all files of an external portable USB storage device/MP3 player
- IR** – infrared sensor for remote control
- USB/CD** – enters disc or USB mode
- LIFT TO OPEN** – opens/closes the DISC door
- TUNING** – tunes to radio stations
- VOLUME** – adjusts volume level
- Cassette keys**
 - interrupts recording or playback
 - stops the tape and to open the cassette holder
 - fast winds/rewards the tape
 - starts playback
 - starts recording
- USB DIRECT** – connects an external USB mass storage device
- DBB** – for a more vivid bass response

Controls / Power Supply

Back panel (See [1])
Telescopic antenna – improves FM reception

Helpful hints: The speakers will be muted when headphones are connected to the set.

AC- MAINS – inlet for power cord

Battery door – open to insert 6 x 1.5V R-14 UM2 C-cells

Remote control (See [2])

- CD** – enters disc mode
- USB** – enters USB mode
- MODE** – selects different play modes: e.g. **REP** **REALL**, **SHUF**, **REP ALL**, or **SHUF** (random order)
- PROG** – programs tracks and reviews the program
- STOP** – stops DISC/USB playback
- PI** – starts/ pauses DISC/USB playback
- For disc USB play:**
 - fast searches back and forward
 - skips to the beginning of a current/previous later track
- ALBUM A / V**
- DEL** – deletes one file or all files stored on the external USB device
- REC** – copy one file or all files of a disc to an external portable USB storage device/MP3 player

Basic Function/ Radio

Basic functions

Switching on/off the set

- To switch on, adjust the **source selector** to **DISC/USB, FM** or **TAPE** as desired.
- To switch off, adjust the **source selector** to **OFF**.

Adjusting sound

- Adjust the sound with the **VOLUME** and **DBB** controls.

Radio reception

- Push the **source selector** to **FM**
- Turn **TUNING** to tune in a radio station.
- To switch of the radio, adjust the **source selector** to **OFF**.

Helpful hints:

- To improve reception**
 - For **FM**, extend, incline and turn the telescopic antenna. Reduce its length if the signal is too strong.

Power Supply

Power Supply

Whenever convenient, use the power supply cord if you want to conserve battery life. Make sure you remove the plug from the set and wall outlet before inserting batteries.

Batteries

Main set (See [1])
Insert **6** batteries, type **R-14, UM2** or **C-cells** (not included, preferably alkaline) with the correct polarity.

Remote control

Important!
Before using the remote control, remove the insulation plastic tab as shown in figure [1].

If the remote control does not function correctly or the operating range is reduced, replace the battery with a new (CR2025) type battery

- Press and hold the latch (A) in the direction as shown in figure [1].
- Simultaneously, pull the battery tray (B) out.
- Replace a new battery, and fully insert the battery tray back to the original position.
- Incorrect use of batteries can cause electrolyte leakage and will corrode the compartment or cause the batteries to burst. Carbon zinc and alkaline batteries will cause an arc. Only use batteries of the same type for the set.
- When inserting new batteries, do not try to mix old batteries with the new ones.
- Remove the batteries if the set is not to be used for a long time.
- Batteries contain chemical substances, so they should be disposed of properly.**

Cassette Recorder

Playing a tape

- Set the source selector to **TAPE**
- Press **PI** to open the cassette holder.
- Insert a recorded cassette.
- Press **DEL** and playback will start.
- Adjust the sound using the **VOLUME** and **DBB** controls.
- For brief interruptions, press **II**. Press **II** again to resume playback.
- By pressing **II** or **PI**, fast winding of the tape is possible in both directions.
- To stop playback, press **PI**.
- To stop playback, press **PI** again.

Recording from radio

- Set the source selector to **FM**
- For radio, tune to the desired radio station using the **TUNING** knob.
- Press **PI** to open the cassette holder.
- Insert a blank tape.
- Press **PI** to start recording.
- For brief interruptions, press **II** to resume recording, press **II** again.
- To stop recording, press **PI**.

Synchro start CD/USB recording

- Set the source selector to **DISC/USB**
- Insert a CD/USB device and if desired, programme track numbers.
- Press **USB/CD** to select CD/USB mode
- Press **PI** to open the cassette holder.
- Insert a blank cassette.
- Press **PI** to start recording.
- Playing of the CD programme starts automatically from the beginning of the programme.
- For brief interruptions, press **II** to resume recording, press **II** again.
- To stop recording, press **PI**.
- To select and record a particular passage within a track, press and hold **PI** or **PI** on the set to select a passage.
- Put the CD player in **II** position at the end of the recording.
- Recording will start from this exact point when you press **PI** to start recording.

Using AC power

- Check if the power/main voltage, as shown on the type plate located on the bottom of the set, corresponds to your local power supply. If it does not, consult your dealer or service center.
- Connect the power cord to the **AC- MAINS** net and the wall socket. The set is now ready for use.
- To switch the set off completely, withdraw the power cord from the wall socket.
- Install the unit near the AC outlet and where the AC power plug can be easily reached.

Important!
Disconnect the power cord from the wall socket to protect your set during heavy thunderstorms. Children could seriously injure themselves as the free end of the cable may still be live if only the connector is removed from the MAINS socket at the back of the unit.

The type plate is located on the bottom of the set

Auto power saving
When the **source selector** is adjusted to **DISC/USB** and the set is in the PAUSE position for 5 minutes, the set will be auto-switched to the stop position to save power.

Helpful hints:
– To avoid unnecessary energy consumption, always adjust the **source selector** to **OFF** after using the set.

CAUTION
Use of controls or adjustments or performance of procedures other than herein may result in unsafe operation.

MP3-CD/ CD Player

About MP3

The music compression technology MP3 (MPEG1 Audio Layer 3) significantly reduce the digital data of an audio CD while maintaining CD quality sound.

Getting MP3 files: you can either download legal music files from the internet to your computer hard disc, or create such files by converting audio CD files in your computer through appropriate encoder software. (128kbps bit rate or higher is recommended for MP3 files.)

Creating a MP3 CD: burn the music files from your computer hard disc on a CDR or CDRW using your CD burner.

Helpful hints:

- Make sure that the file names of the MP3 files end with **.mp3** or **.wma**.
- Number of albums maximum 500
- Number of tracks maximum 1000
- The length of file names affects the number of tracks for playback. With shorter file names, more files can be burned on a disc.

Playing a disc

This player plays Audio Discs including CD-R/CD-RW, MP3 CD and WMA. Do not try to play a CD-ROM, CD-I, CD-V, DVD or computer CD.

IMPORTANT!

- CDs encoded with **copyright protection technologies** by some record companies may be unplayable by this product.
- DRM-protected WMA disc is not supported.
- Adjust the **source selector** to **DISC/USB**
- Display shows **u5d** (see [3]), or **fno** if no USB device available (see [4]).

