

User manual

Manuel d'utilisation | Benutzerhandbuch | Manual del usuario
Gebruikershandleiding | Manuale per l'utente | Manual do usuário
Användar-handbok

Jukebox

HDD6320
HDD6330
HDD6335



Country	Helpdesk	Tariff / min	Keep ready
Europe			
Belgique	070 253 010	€0.17	La date d'achat la référence et le numéro de série du produit
Danmark	3525 8761	Local tariff	Forbrugeren's indkøbsdato, type/model-og serienummer
Deutschland	0180 5 007 532	€0.12	Das Kaufdatum. Modellnummer und Serial nummer
Españal	902 888 785	€0.15	Fecha de compra e número del modelo e número de serie
Ελληνικά	0 0800 3122 1223	δωρε-ν	Την ημερομηνία αγοράς και Τον ακριβήκωδικό μοντέλου και Τον αριθμό σειράς του προϊόντος σας
France	08 9165 0006	€0.23	La date d'achat la référence et le numéro de série du produit
Ireland	01 601 1161	Local tariff	Date of Purchase. Model number and Serial number
Italia	199 404 042	€0.25	La data di acquisto, numero di modello e numero di serie
Luxembourg	40 6661 5645	Local tariff	La date d'achat, la référence et le numéro de série du produit
Nederland	0900 0400 063	€0.20	De datum van aankoop, modelnummer en serienummeret
Norge	2270 8250	Local tariff	Datoen da du kjøpte produktet & modellnummer & serienummeret
Portugal	2 1359 1440	Local tariff	A data de compra, número do modelo e número de série
Schweiz	02 2310 2116	Local tariff	Das Kaufdatum und Modellnummer und Seriennummer
Suomi	09 2290 1908	Paikallinen hinta	Ostopäivä ja tarkka mallinnumero ja sarjanumero
Sweden	08 632 0016	Local tariff	Inköpsdatum, modellnummer och serienummer
UK	0906 1010 017	£0.15	Date of Purchase, Model number and Serial number
Österreich	0820 901115	€0.20	Das Kaufdatum. Modellnummer und Seriennummer
North America			
Canada	1-800-661-6162 (Francophone) 1-888-744-5477 (English / Spanish)	Free	Date of Purchase. Model number and Serial number
USA	1-888-744-5477	Free	Date of Purchase, Model number and Serial number
Asia			
China	4008 800 008	Local tariff	Date of Purchase, Model number and Serial number
Hong Kong	2619 9663	Local tariff	Date of Purchase, Model number and Serial number
Korea	(02) 5961195/1196	Local tariff	Date of Purchase, Model number and Serial number

Welcome	1
About your new player	1
Accessories	1
Optional accessories	2
Register your product	3
More information	3
Connect and Charge	4
Battery level indication	4
Install	4
Transfer	5
Enjoy	5
Powering on and off	5
Reset	5
Using your GoGear player	6
Overview of controls and connections	6
Main menu	7
Navigation	7
Organise and synchronise pictures and music with Windows Media Player	9
Music	9
Pictures	17
Detailed operation	23
Music mode	23
Pictures	29
Radio*	32
Recordings	35
Settings	37
Using your player to store and carry data files	39
Updating your player	40
Manually check whether your firmware is up to date	40
Troubleshooting	42
My player skips tracks	42
My Player is not recognised by Windows	42
My player cannot power ON	42
There is no Music on my player after transfer	44
There are no pictures on my player after transfer	44
My GoGear player hangs	45
My player is full and I have less songs on my player than I expected	45
Poor radio reception*	45

Safety and Maintenance	46
Notice for the USA	48
Notice for Canada	48
Notice for the European Union	48
Technical data	49
Cameras supported	50

Welcome

About your new product

With your newly purchased product, you can enjoy the following:

- MP3 and WMA playback
- Picture viewing
- FM radio*
- Recording: Voice, FM*, line-in

* For more information on any of the above features, see "Detailed operation" on page 23 of this manual.

Accessories

The following accessories are included with your player:



Headphones
(provided with 3
different sizes of
rubber caps)



Combined charger /
USB cable



Protective pouch



For Europe and other regions:

CD-ROM with Windows Media Player;
Philips Device Manager; Philips Device
Plug-in, User manuals, Tutorials and
Frequently Asked Questions



For US:

Easy start CD 1 and 2 with Windows
Media Player; Philips Device Manager; Philips
Device Plug-in, User Manual, Tutorials and
Frequently Asked Questions

* FM radio is only available for certain regions. It is not available for Europe.

Optional accessories

The following accessories are not included with your player, but can be bought separately. You can find them at www.philips.com/GoGearshop (Europe) or www.store.philips.com (US).

Docking cradle (PAC004)



Dock and connect the player to your stereo system or TV for music sharing or viewing of slideshows

GoGear control case (PAC002)



Protect your player and control your music

Digicam connection cable (PAC006)



Transfer your digicam pictures to the player and free up memory space of your digital camera. *

*See page 50 for a list of supported cameras.

Register your product

We strongly recommend that you register your product in order to gain access to free upgrades. To register your product, please log on to www.philips.com/register so that we can inform you as soon as new updates become available.

More information


Please visit www.philips.com/support or www.usasupport.philips.com (for U.S. residents)

Enter your product model number to view:

- FAQ, Frequently Asked Questions
- Latest User Manuals
- Tutorials
- Latest PC software downloads
- Firmware upgrade files

The model and production numbers can be found on the label at the back of your product.

Connect and Charge

1. Connect the supplied multi-voltage adaptor/charger to your player by plugging it into the DC-In connector at the bottom of the player and then plug the other end into a standard AC outlet.
2. The battery will be fully charged in 4 hours when charging it for the first time and 70% charged in 1 hour for quick charge.
3. The player is fully charged when the charging animation stops and  is displayed.

Battery level indication

The approximate power levels of your battery are indicated as follows:



Battery is full



Battery is two-thirds full



Battery is half full

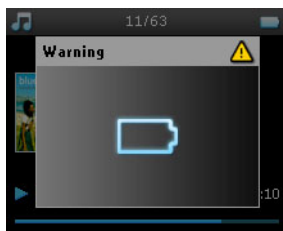


Battery is low



Battery is empty

When the battery is nearly empty, the following power low warning screen will blink and emit a beep tone. When you hear a double beep, your player will power down in less than 60 seconds. All settings and unfinished recordings will be saved before the player shuts down.



Install

1. Insert the CD supplied with your product into the CD ROM drive of your PC.
2. Follow the onscreen instructions to complete the installation of **Windows Media Player** (including necessary plug-ins) and **Philips Device Manager**.

IMPORTANT!

For US: There are two CDs and both are required for installation.

3. You may need to restart your PC after software installation.
4. If the installation program does not start automatically, browse the CD contents via **Windows Explorer** and run the program by double clicking on the file ending with **.exe**.

5. System requirements:

- Windows® XP (SP1 or above)
- Pentium Class 300 MHz processor or higher
- 128 MB RAM
- 500 MB hard disk space
- Internet connection
- Microsoft Internet Explorer 6.0 or higher
- USB port

Lost your CD? Don't worry, you can download the CD contents from www.philips.com/support or www.usasupport.philips.com (for U.S. residents).

Transfer

You can transfer music and pictures to your player using **Windows Media Player**. See "Organise and synchronise pictures and music with Windows Media Player" on page 9 for more details.

Enjoy

Powering on and off

To power on, push and hold down **ON/OFF HOLD** slider to **ON/OFF** position for 3 seconds until the player powers on.

To power off, push and hold down **ON/OFF HOLD** slider to **ON/OFF** position for 3 seconds until the player powers off.

NOTE!

Your player automatically powers off if there is no operation nor music played for 10 minutes. The last playback status and screen will be resumed the next time it is powered on unless the player has been powered off for a long period of time or the battery level was low when the player was powered off.

Reset

In the unlikely event that your player hangs, do not panic. Simply push and hold down **ON/OFF HOLD** slider to **ON/OFF** position and press **VOLUME +** at the same time. Hold until the player shuts down.

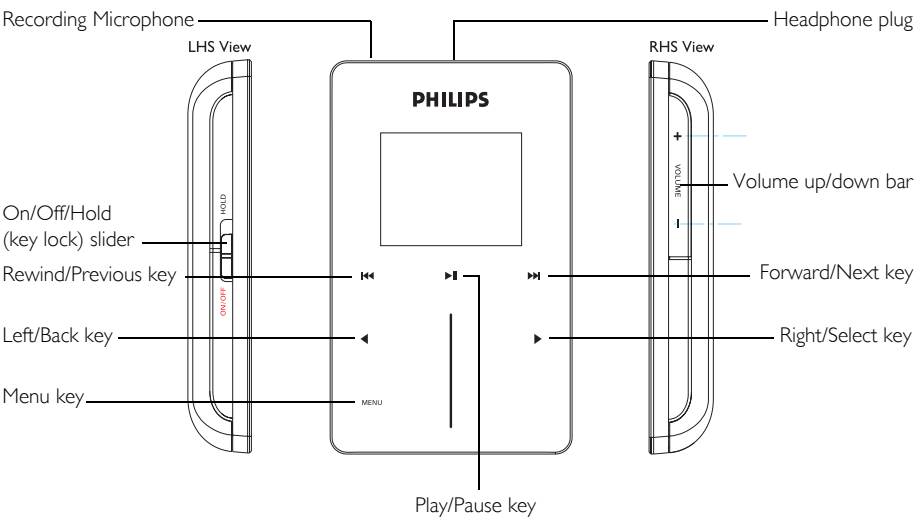


TIP

The existing contents on your player will not be erased when you reset your player.

Using your GoGear player

Overview of controls and connections



Press	To
ON/OFF HOLD (slide down and hold for about 3 seconds)	Power on/off
ON/OFF HOLD (slide up)	Lock all touch control keys
▶▶	Play/Pause songs Stop radio playback
◀◀	Move back to previous song Fast rewind
▶▶	Jump to next song Fast forward
+ VOLUME -	Control volume
◀	Return to previous menu/option
▶	Select option Go to next option
VERTICAL TOUCH STRIP	Scroll through lists
MENU	Access list of menu options

Main menu

The following are available from the main menu of your player:

Menu	To
MUSIC	Play your digital music tracks
PICTURES	View pictures
RADIO*	Listen to radio
RECORDINGS	Create or listen to recordings
SETTINGS	Customise the settings of your player
NOW PLAYING	Go to the play screen






TIP



Press and hold ◀ to return to main menu.

Navigation

Your player has touch sensitive controls that respond to the touch of your fingers. The **VERTICAL TOUCH STRIP** (see picture) is used to scroll through lists. It responds to the following finger movements:

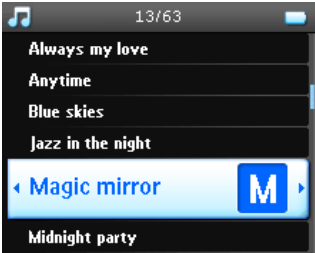
Action	Description	Function
 Tap	Lightly touch the top or bottom end of the touch strip	Move up or down step by step
 Hold	Press and hold finger on the top or bottom end of the touchstrip	Scroll through a list at increasing speed (SuperScroll)
 Stroke	Move finger from top to bottom or bottom to top	Scroll through list

* FM radio is only available for certain regions. It is not available for Europe.

 <p>Swipe</p>	<p>Fast swipe up or down</p>	<p>List will scroll quickly like a wheel (Fly wheel) and then slow down gradually</p>
 <p>Tap</p>	<p>Tap in the middle</p>	<p>To stop list from spinning</p>

SuperScroll

Superscroll enables you to find your favorite songs quickly. When scrolling quickly through a list of songs, artists, albums or genres, a Superscroll letter (the first alphabet of the song, artist, album or genre) will be displayed in highlight to give you information about where you are in the list.



Organise and synchronise pictures and music with Windows Media Player

This chapter describes the basic operations and steps that you need to follow to successfully transfer music and pictures to your player. For more information, please refer to **Windows Media Player Help** on your computer.

Music

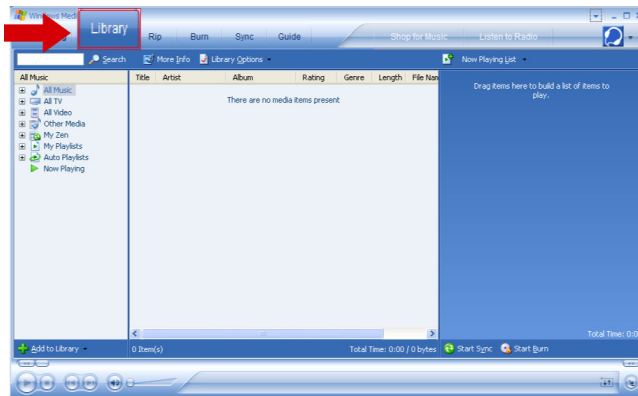
Add songs to Windows Media Player Library

Songs that are already on your computer

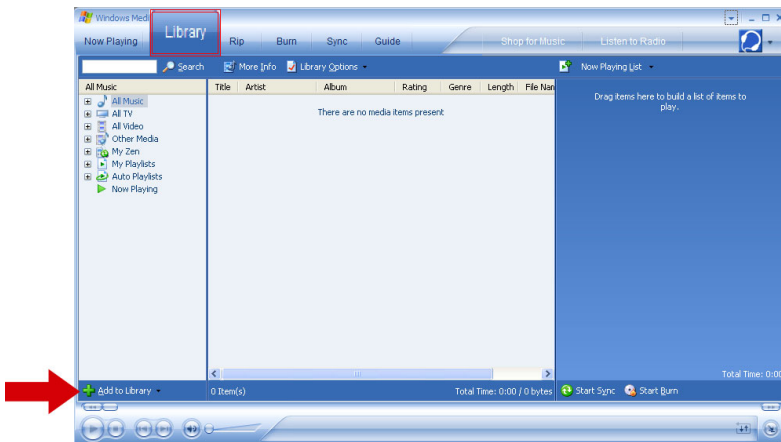
1. Start **Windows Media Player** by clicking the following icon on your desktop.



2. Select **Library** tab to access media library.



- Click **Add to Library** on the bottom left of the screen.

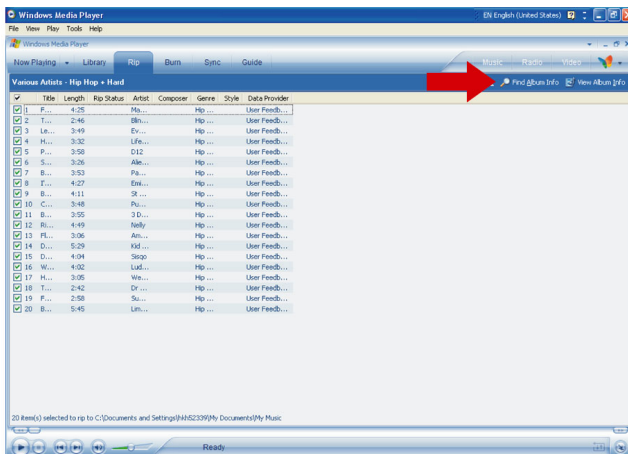


- You can choose to add files from folder, URL, by searching your computer, etc.

Ripping songs from a CD

If you want to transfer music from a CD to your player, you need to create a digital copy of the music on your PC first. This is called ripping.

- Start **Windows Media Player**.
- Insert the Audio CD.
- Select **Rip** tab to display a list of music tracks on your CD.
- If your computer is connected to the Internet, the album information will be automatically obtained so that you don't have to enter the song titles and other information manually.
- If this does not happen, check that you are connected to the Internet and click **Find Album Info**.

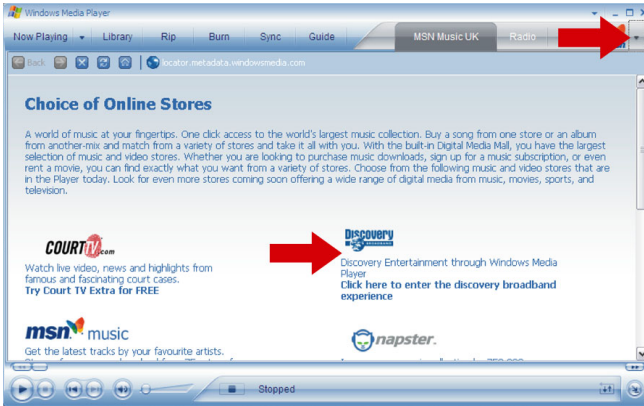


6. Select the music tracks you would like to rip and click **Rip Music** on the top menu bar.
7. The music tracks will be converted into digital copies and added to **Windows Media Player** library.

Buying songs online

If you want to buy music online, you need to select a music store.

1. Click the little triangle on the top right of the screen and select **Browse all Online Stores**.
2. Choose a store and follow the onscreen instructions.
3. After you have bought a song or an album, it will appear in **Windows Media Player** library.



Synchronising Windows Media Library contents with your player

When you connect the player to your computer for the first time, **Windows Media Player** will start **Device Setup Wizard**. You can choose to synchronise your player with **Windows Media Player** library automatically or manually.

Automatic synchronisation

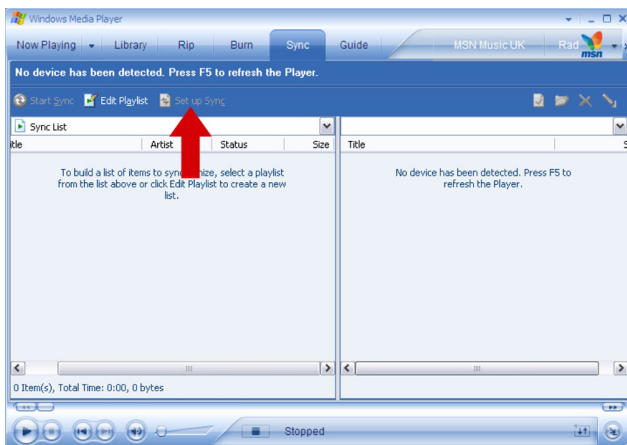
When you start **Windows Media Player** and connect your player to the computer, the contents on your player will be updated automatically according to the sync settings you have specified.

Manual synchronisation

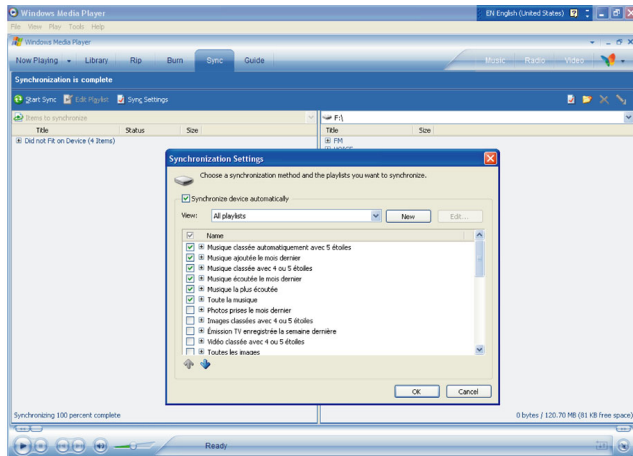
When you start **Windows Media Player** and connect your player to the computer, updating of contents will not start until you have selected the contents and specified the order in which they will be synchronised.

Setting up automatic synchronisation

1. Start **Windows Media Player**.
2. Connect the player to your computer using the supplied USB cable.
3. Select **Sync** tab and click **Sync settings** or **Set up Sync**.

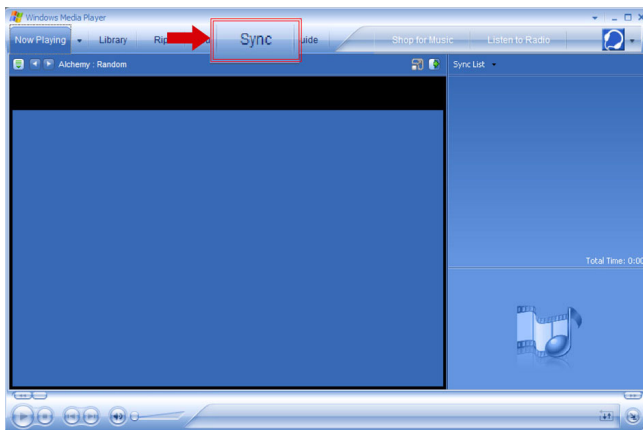


4. **Synchronisation settings** dialog box will be displayed.
5. Select **Synchronise device automatically** check box.
6. Select the check boxes that correspond to the playlists you want to synchronise.
7. Click **OK**.

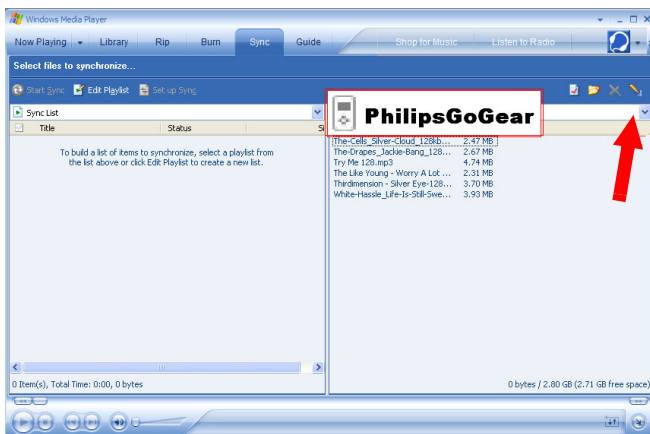


Setting up manual synchronisation

1. Start **Windows Media Player**.
2. Connect the player to your computer using the supplied USB cable.
3. Select **Sync** tab.

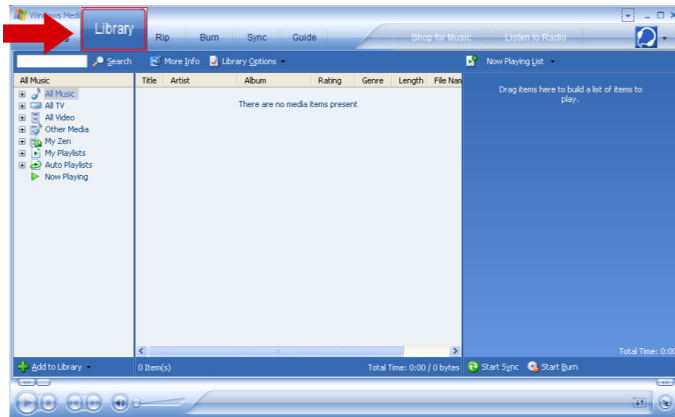


4. In the pull-down menu on the right pane, select **Philips** or **Philips GoGear** as the destination.

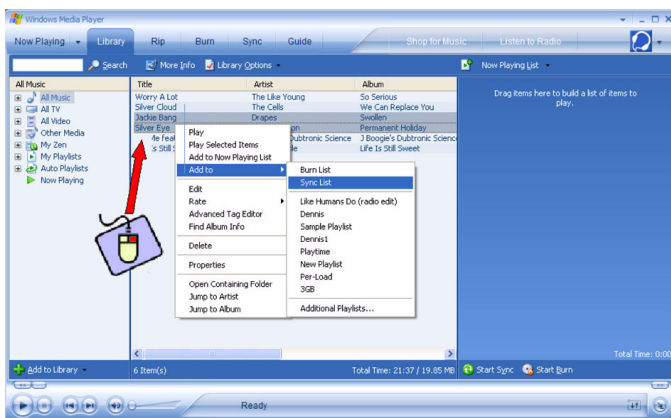


5. If they are not in the list, click **F5** to refresh and try again.

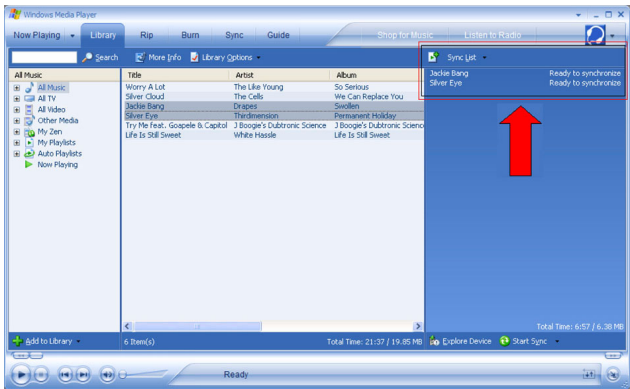
6. Select **Library** tab to access media library.



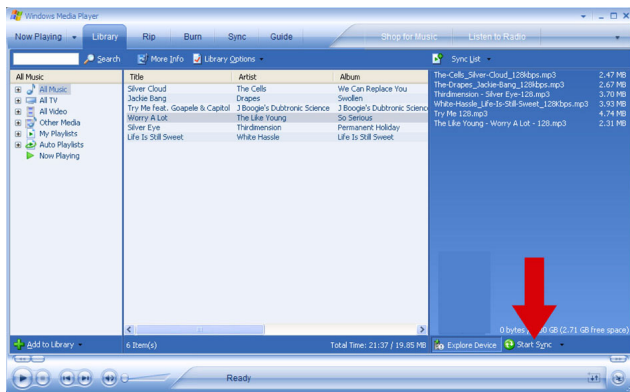
7. Click to highlight the song you want to copy.
8. Right click on the song and select **Add to > Sync List**.



9. Or drag and drop the song into the **Sync List** on the right pane.



10. Click **Start Sync** button at the bottom of the screen to start synchronisation. The progress will be displayed just above the **Start Sync** button.



TIP

We recommend that you always use **Windows Media Player** to transfer music to your player. However, if you prefer to use **Windows Explorer**, always make sure to copy your music into the Media/ Music folder, otherwise the songs will neither show nor play on your player.

Windows Media Player Playlist

Creating a Playlist

1. Start **Windows Media Player**.
2. Select **Library** tab to access media library.
3. Click to highlight a track.
4. Right click on the track and select **Add to > Additional Playlist...**
5. In the **Add to Playlist** dialog box, select an existing playlist or click **New** to add a new playlist.
6. The track you have selected will be added to the playlist.



TIP

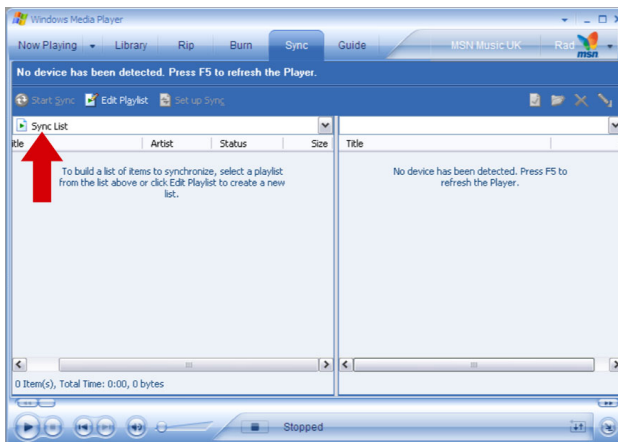
To select more than one track, press and hold the **<Ctrl>** key of your keyboard, then click to select any number of tracks.

To select consecutive tracks in a list, click the first track, then press and hold the **<Shift>** key of your keyboard and click the last track in the list you want to select.

Transfer playlists

You can transfer playlists to your player via the automatic synchronisation option of **Windows Media Player**. (See "Setting up automatic synchronisation" on page 12 for step by step instructions)

1. Select **Sync** tab.
2. Click **Sync settings** or **Setup Sync**, select **Synchronise device automatically** check box and select the playlists to be synchronised with the player.



Managing your tracks and playlists in Windows Media Player

Delete Tracks from Windows Media Player library

1. Click to highlight an item.
2. Right click and select **Delete** to delete the item.



TIP

It is not possible to delete playlists that are on your **GoGear** player via **Windows Media Player**. You can only delete the playlist via the device itself.

Delete tracks from your player through Windows Media Player

1. Connect your player to the computer.
2. Select the songs that you would like to delete from your player in the items on device pane.
3. Press **Delete** key on your computer keyboard.

Edit Track Information via Windows Media Player

1. Select **Library** tab.
2. Highlight the track you want to edit, right click and select **Edit**.
3. Edit on the text box directly.

Search for Tracks via Windows Media Player

1. Select **Library** tab.
2. Type a search string in the search field.
3. Click **Search** to start searching.
4. A list of tracks containing the search string will be displayed.
5. You can play, transfer, delete, add to sync list, etc.

Pictures

IMPORTANT!

Make sure **Philips Device Plug-in** has been installed on your computer. This Plug-in is crucial to enable image support on your player. It is automatically installed from the supplied CD when you click **Install** in the **Install software** dialog box.

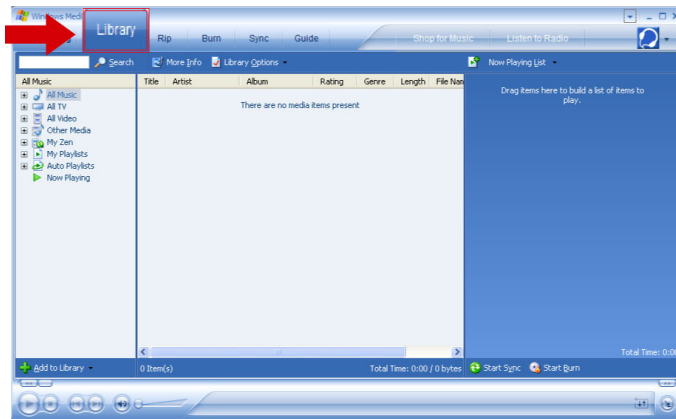
To check whether this Plug-in has been installed, go to **Control Panel > Add or Remove Programs** and check if **Philips Device Plug-in** is listed.

Enable picture support

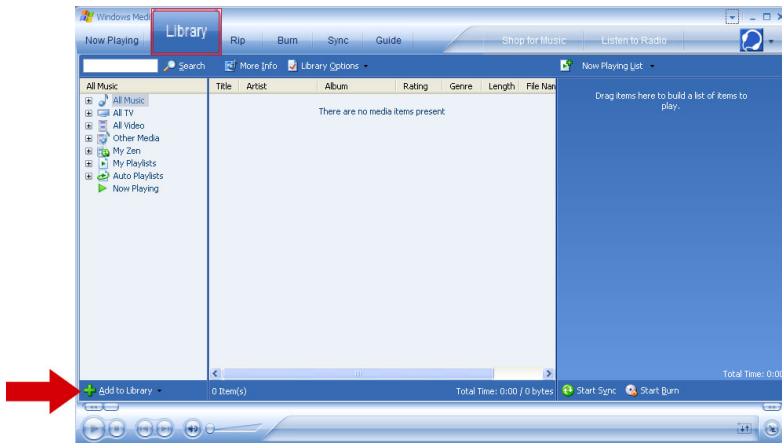
1. Start **Windows Media Player**.
2. Go to **Tools > Options > Player**.
3. Make sure **Enable picture support for devices** check box is selected.

Add pictures to Windows Media Player Library

1. Start **Windows Media Player**.
2. Select **Library** tab to access media library.



3. Click **Add to Library** on the bottom left corner of the screen.



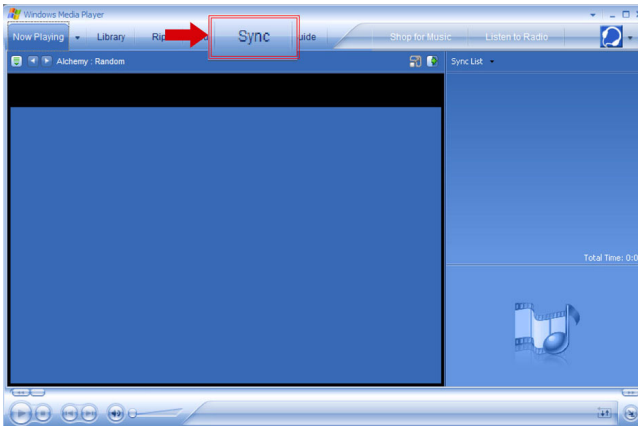
4. Choose **Add Folder....**
5. Select the folder in which you have kept your pictures and press **OK**.

Transfer pictures to your player

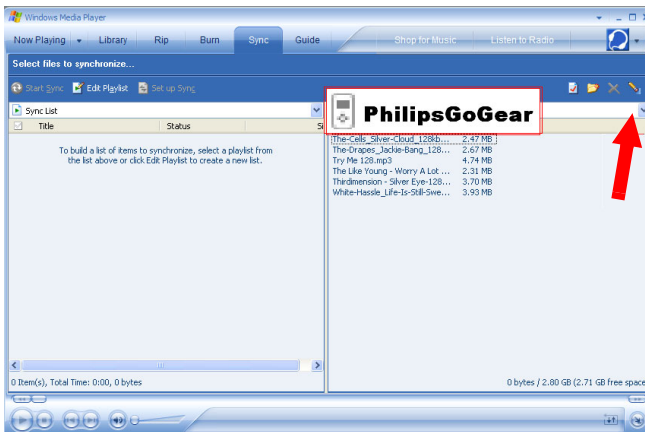
IMPORTANT!

Pictures can only be transferred using **Windows Media Player**. If they were dragged and dropped using **Windows Explorer**, they will not show on your device.

1. Connect the player to your computer.
2. Start **Windows Media Player**.
3. Select **Sync** tab.

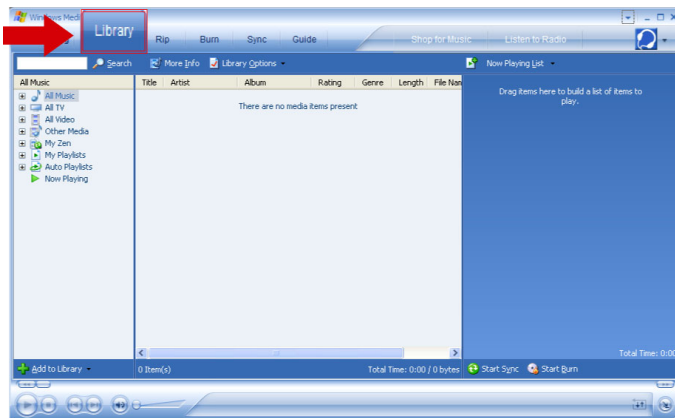


4. In the pull-down menu on the right pane, select **Philips** or **Philips GoGear** as the destination.

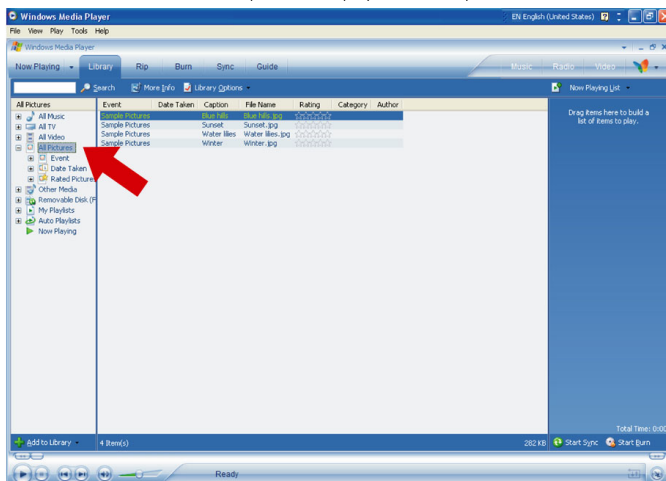


5. If they are not in the list, click **F5** to refresh and try again.

6. Select **Library** tab to access media library.

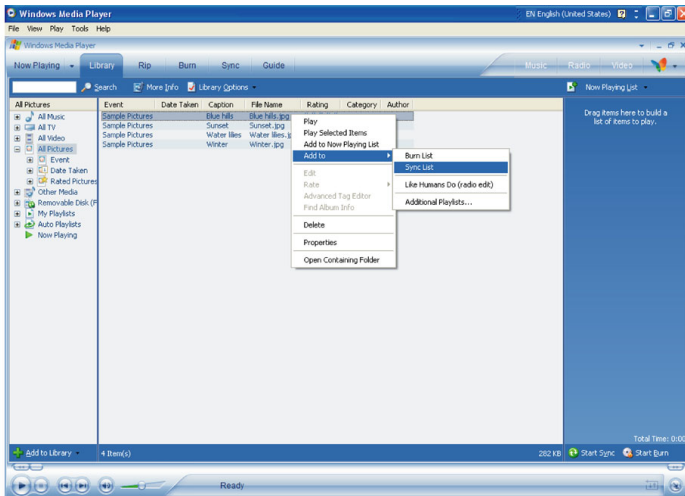


7. Click **All Pictures** on the left pane to display the list of pictures.

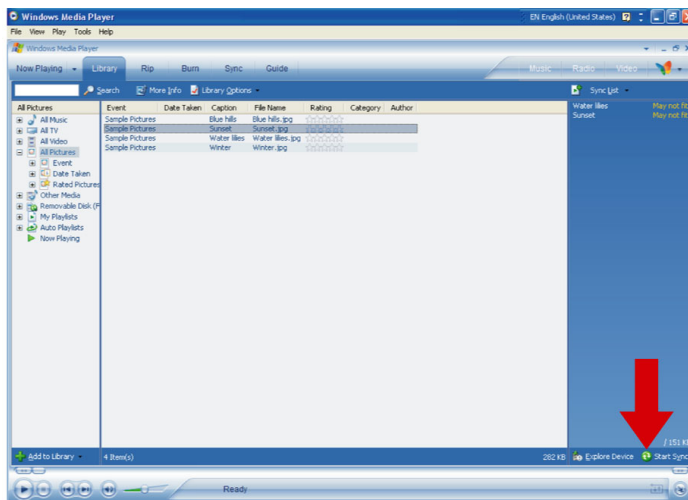


8. Click to highlight a picture you want to copy to your player.

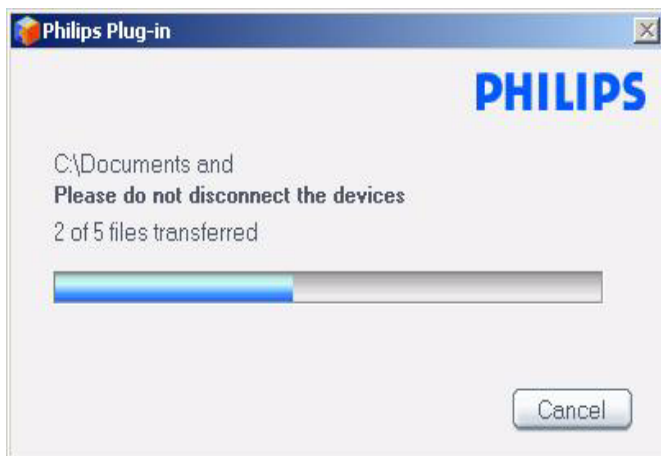
9. Right click on the picture and select **Add to > Sync List**.



10. Or drag and drop the picture into the **Sync List** on the right pane.
11. Click **Start Sync** button at the bottom of the screen to start synchronisation. The progress will be displayed just above the **Start Sync** button.



12. A pop-up message will be displayed, notifying you of the synchronisation progress.



13. When the pop-up disappears, the transfer is completed and you can disconnect your player.

Detailed operation

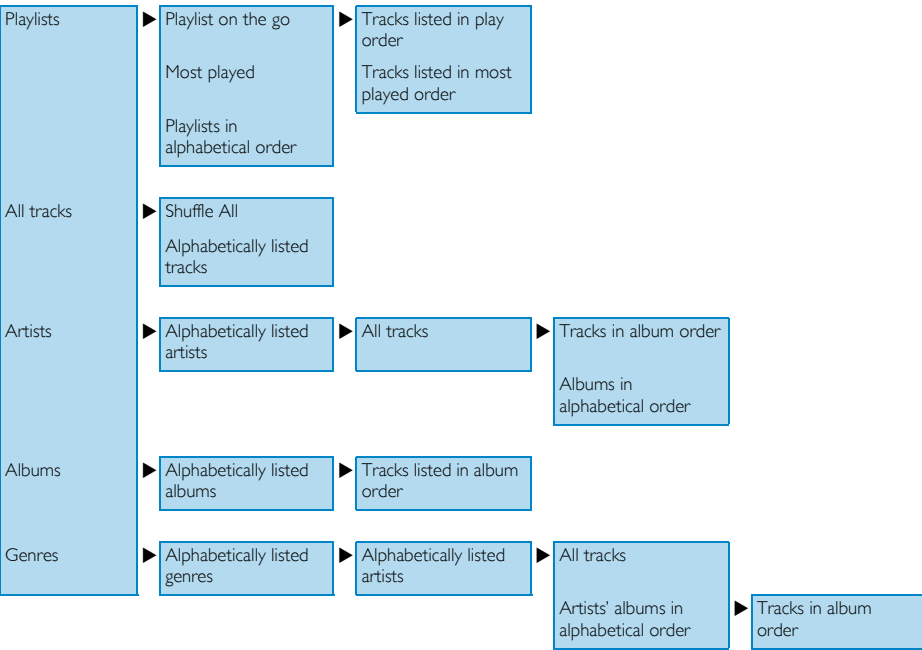
Music mode

Your player is preloaded with some music tracks. You can transfer your digital music and picture collection from your computer to your player using **Windows Media Player**. More information on music transfer can be found on page 9.

Finding your music

1. From the main menu, select **MUSIC** to enter music mode. You can search from the following music options:

Music



2. Use the **VERTICAL TOUCH STRIP** to scroll up or down the options.
3. Press ▶ to select or press ◀ to return to previous level.
4. Press ▶|| to play your selection.



TIP




Superplay™ allows you to playback the selected music or album immediately at any point by pressing ▶|| on the selection.

Controls

During music playback, you can do the following:

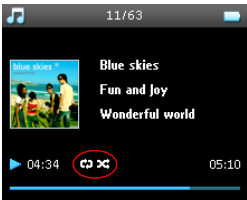
To	Do this
Play / Pause music	Press ►
Go to next track	Press ►
Go to previous track	Press ◄
Forward search	Press and hold ►
Backward search	Press and hold ◄
Access options menu	Press MENU
Return to browsing	Press ◀

Play mode

You can set your player to play music tracks randomly (**Shuffle All** ) or repeatedly (**Repeat One**  or **Repeat All** )

1. From the main menu, select **Settings > Play mode**.
2. Use the **VERTICAL TOUCH STRIP** to scroll up or down the options.
3. Press ► to select an option.
4. Press ► again to deselect an option.

While you are playing music you can see the following active play mode screen.



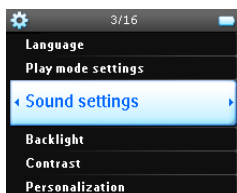
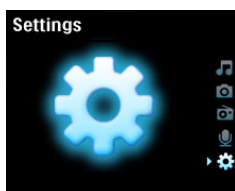
TIP

You can also access the above play mode while you are playing music by pressing **MENU**.

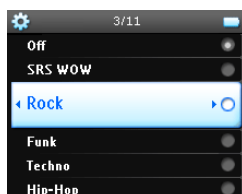
Sound settings

You can set your player to play music tracks with different EQ (equalizers) settings.

1. From the main menu, select **Settings** > **Sound Settings**.



2. Use the **VERTICAL TOUCH STRIP** to scroll through the list of options: **SRS WOW**, **Rock**, **Funk**, **Techno**, **HipHop**, **Classical**, **Jazz**, **Spoken Word**, **Custom**, or **Off**.



3. Press **▶** to select.
4. **Custom** settings allow you specify your desired equalizer setting by adjusting the individual settings for bass (**B**), low (**L**), mid (**M**), high (**H**) and treble (**T**).

Playlist on the go

Playlist on the go is a playlist that can be created on the player while on the move.

All songs will be displayed and listed in play order in the playlist. New songs are automatically added to the end of the playlist.

Adding songs to playlist on the go

You can add your favorite songs, albums, artists and genres to **Playlist on the go** during music playback.

1. Press **MENU**.
2. Select **Add to Playlist on the go**.
3. A message **[item name] added to playlist on the go** will be displayed.

Alternatively, you can add songs, albums, artists and genres to **Playlist on the go** from the music library.

1. Press **MENU** and select **Add to Playlist on the go**.
2. A message **[item name] added to playlist on the go** will be displayed.

Playback of playlist on the go

1. Select **Music > Playlists > Playlist on the go**.
2. Select your playlist and press **▶||**.

Clear Playlist on the go

You can clear all the songs in **Playlist on the go**.

1. Select **Music > Playlists > Playlist on the go**.
2. Press **MENU** and select **Clear Playlist on the go**.



TIP

This will empty **Playlist on the go** but will not delete those tracks from your player.

Save Playlist on the go

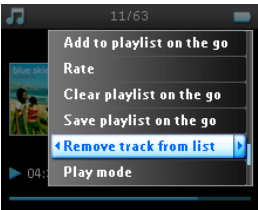
You can save **Playlist on the go**. It will be saved under a different name and **Playlist on the go** will be emptied.

1. During music playback, press **MENU**.
2. Select **Save playlist on the go**.
3. A message **Save playlist on the go?** will be displayed.
4. Select **Save** to confirm.
5. A message **Playlist-on-the-go saved as: Playlist-on-the-go YYYY-MM-DD-XX** will be displayed.

Delete songs from Playlist on the go

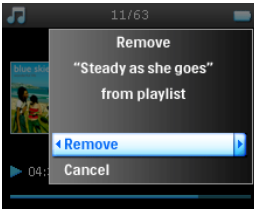
You can delete specific songs from **Playlist on the go**.

1. Select the song from **Music > Playlists > Playlist on the go**.
2. Press **MENU** and select **Remove track from list**.

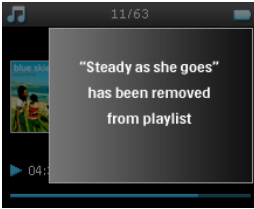


3. A message **Remove [song name] from playlist?** will be displayed.

4. Select **Remove** to delete the song from **Playlist on the go**.



5. A message **[song name] has been removed from playlist** will be displayed.



NOTE!

The song is removed from the playlist only, it will not be deleted from the player.

Most played

You can playback your top 100 most played songs by selecting this playlist.

1. From the main menu, select **Music > Playlists > Most played**.
2. The list shows the 100 most played songs on your player. The first song in the list is the most played song.
3. You can reset the play count to 0 via **Settings > Music library settings > Reset play count**.

Other playlists

You can transfer playlists to the player using **Windows Media Player**. Please refer to "Transfer playlists" on page 16 for details.

Delete playlist from your player

You cannot delete the playlist on your player via **Windows Media Player**. We recommend that you do it via the player itself.

1. Play the playlist you want to delete.
2. Press **MENU**.
3. Select **Delete playlist**.
4. A message **Delete [playlist name]?** will be displayed.
5. Select **Delete**.
6. A message **[playlist name] deleted!** will be displayed.

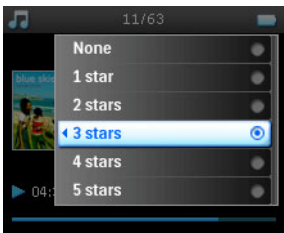
Rating your tracks

You can rate a track with 1 to 5 stars.

If you want to rate the track currently playing, press **MENU** and select **Rate**. Then rate the track from 1 star to 5 stars.

You can also rate a song that is not currently playing.

- 1. Select the song from the music library.
- 2. Press **MENU** and select **Rate**.
- 3. You can then rate the track from 1 star to 5 stars.



- 4. The next time that you connect your player to your computer and start **Windows Media Player**, the rating of your songs in **Windows Media Player** will be updated with the information from your player.

Now Playing

You can browse your music library or pictures while you are listening to music.

To go back to the play screen, press **◀** to navigate back to the main menu and select **Now Playing**.



Pictures

You can view your favorite pictures on your player. While you are browsing your pictures, you can listen to music or radio at the same time.

Transferring pictures to your player

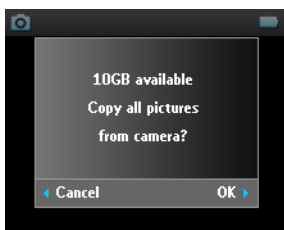
From PC

You can transfer pictures from your PC to your player using **Windows Media Player**. See "Organise and synchronise pictures and music with Windows Media Player" on page 9 for details.

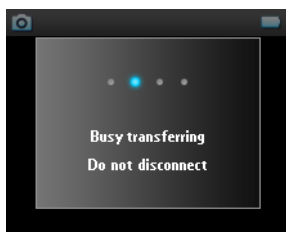
From Camera

Your player can serve as an image storage device. You can connect it to your digital camera* and transfer your pictures from your camera to your player.

1. Connect your camera to your player with the digicam connection cable. (this is an optional accessory which is not supplied with your player. See "Optional accessories" on page 2 for details)
2. Connect the smaller end of the cable to the camera and the bigger end to your player.
3. Power on both the camera and your player.
4. When the camera is recognised, the player will stop its current activities and switch to camera connected mode.
5. A message **[XX]GB available. Copy all pictures from camera?** is displayed.

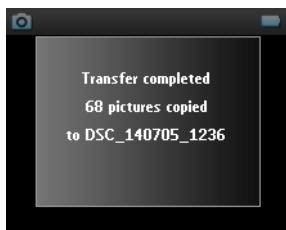


6. Press **▶** to confirm.
7. A message **Busy transferring. Do not disconnect** is displayed.



*See page 50 for a list of supported cameras.

8. This will be followed by a pop-up message:
Transfer completed. [number] pictures copied to <new folder name>.



9. Safely disconnect your camera from the player. The player will return to **Pictures** menu.
10. A new picture album will be created each time pictures are transferred from your camera to the player.
To find this album, select **Pictures** from the main menu.
11. Select **From camera** album to view the pictures which you have transferred from your camera.

NOTE!

When images from the camera are displayed as a TV slideshow on TV, the minimum time interval between slides is 10 seconds.

The full view images for pictures transferred from the camera are slightly smaller than those transferred from PC.

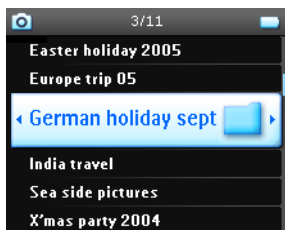
Uploading pictures from the player to your PC

1. Connect the player to your computer.
2. Your player will be identified as Philips or Philips GoGear in **Windows Explorer**.
3. Go to **Media > Pictures > From camera**.
4. Drag and drop your pictures to any desired location on your PC.

Finding pictures on your player

Pictures on your player are organised in albums which are similar to the way they are organised in **Windows Media Player**.

1. When you select **Pictures** from the main menu you will see a list of all picture albums.



2. Select the picture album you wish to view. You will see a thumbnail view of all pictures in that album.



3. Use the **VERTICAL TOUCH STRIP** to scroll and select a picture to see its full view.
4. You can also browse through your pictures in full view mode by tapping on the top or bottom of the **VERTICAL TOUCH STRIP** to go to the next or previous picture.



Slideshow

A slideshow will display all pictures inside an album in full view. It will automatically go to the next picture at a specified interval. Background music can be played from a specified playlist during a slideshow.

Start a slideshow

1. From the main menu, select **Pictures**.
2. Select the picture album you wish to view.
3. You can start slideshow in album list, thumbnail view or full picture view.
4. Press **MENU** and select **Start slide show**.
5. You can stop the slideshow by pressing ◀.

Slideshow music

You can play background music during a slideshow by assigning a playlist in **Slide show settings**. You can choose to play any playlist during a slideshow.

1. From the main menu, select **Pictures**.
2. Press **MENU** and select **Slide show settings** > **Slideshow music** and choose one of the playlists.

NOTE!

During a slideshow you cannot pause, skip or fast forward / rewind your music.

Customising slideshow settings

You can customise slideshow settings using **Slide show settings** menu.

Settings	Options	Descriptions
Slideshow music	Alphabetical playlists / None	Choose which playlist to play in the background while playing slide show
Transitions	Off / Vertical Wipe / Fade	Choose the transition effect between slides
Time per slide	4 Sec / 6 Sec / 8 Sec / 10 Sec / 20 Sec	Choose to set time between slides
Shuffle slideshow	On / Off	Choose to show slides at random or in album order
Repeat slideshow	On / Off	Choose to repeat slides
TV settings	NTSC (USA) / PAL (Europe)	Choose the TV setting that works with your TV

TV slideshow

Your player supports TV slideshow.

1. Connect your player to the TV via the docking cradle. (this is an optional accessory which is not supplied with your player)
2. Select the A/V channel on your TV.
3. On your player, select **Pictures** from the main menu.
4. Select the album you want to view.
5. Press **MENU**, select **Slide show settings** > **TV settings** and choose between **NTSC** or **PAL** depending on which your TV supports. TVs in Europe generally support PAL and TVs in US generally support NTSC.
6. Select **Start slide show**.
7. The images will be displayed on your TV screen.

Radio*

Connect the headphone

The headphone serves as a radio antenna. Make sure it is properly connected to ensure optimal reception.

Select your FM region

From the main menu, select **Settings** > **Radio settings**.

Region	Frequency range	Tuning steps
Europe	87.5 – 108 MHz	0.05 MHzU
USA	87.5 – 108 MHz	0.1 MHz
Asia	87.5 – 108 MHz	0.05 MHz

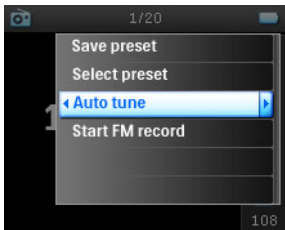
* FM radio is only available for certain regions. It is not available for Europe.

Auto tune

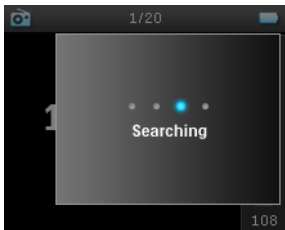
From the main menu, select **Radio** to enter radio mode.

The radio will start playing from the last played station.

1. To find the radio stations with the strongest signals available in your area, press **MENU** and select **Auto tune**.



2. The player will search for the stations with the strongest signals and save them as presets. You can preset a maximum of 20 radio stations.



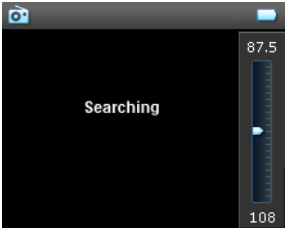
Playing a preset radio station

1. From the main menu, select **Radio** to enter radio mode.
2. Press **⏮** or **⏭** to browse your preset stations.

For quick access to a certain preset station, press **MENU**, select **Select preset** and select your desired station from the list.

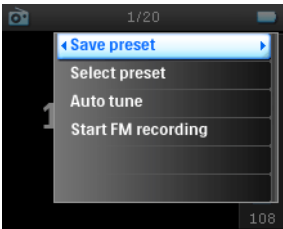
Manual tuning

- 1. Tap on the bottom or top of the **VERTICAL TOUCH STRIP** to tune step by step.
- 2. The frequency bar indicates the change in frequency.
- 3. Press and hold the top/ bottom end of the **VERTICAL TOUCH STRIP** to search for the previous/ next available station.
- 4. A message **Searching** will be displayed and stops when a station with strong signal is found.



Saving a station as preset

- 1. In radio mode, press **MENU** and select **Save preset**.



- 2. Select the preset number at which you want to save the station.
- 3. Press **▶** to save the station.



Recordings

You can make voice, radio* or line-in recordings using your player.

Making MIC recordings

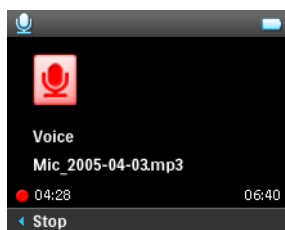
1. From the main menu, select **Recordings**.



2. Select **Start MIC recording** to start a voice recording.



3. Your player will display the following recording screen.

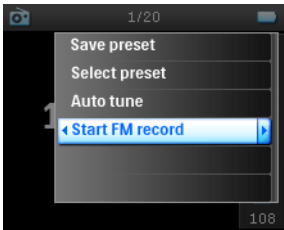


4. Press ◀ to stop and save the voice recording.
5. The player will display the saving progress.
6. Your voice recording will be saved on your player as a PCM file (.wav extension). You can find this file under **Recordings > Recordings Library > MIC recordings**.

* FM radio is only available for certain regions. It is not available for Europe.

Making FM recordings*

- 1. While listening to the radio, press **MENU**.
- 2. Choose **Start FM recording**.



- 3. Press **◀** to stop and save the FM recording.
- 4. Your FM recording will be saved on your player as a PCM file (.wav extension). You can find this file under **Recordings > Recordings library > FM recordings**.

Making LINE-IN recordings

Line-in recordings are used to record music tracks in digital format directly from an external player.

- 1. Connect an external player (like a portable CD player or a stereo system) to your player via the docking cradle. (this is an optional accessory which is not supplied with your player)
- 2. Insert one end of the audio cable to the line-out connection on the cradle and the other end to the device you want to record from.
- 3. Go to the main menu of your player and select **Recordings > Start LINE-IN recording**.
- 4. A message **Connect line-in** will be displayed.
- 5. Press **▶** to start line-in recording, at the same time, start the playback on the device you want to record from.
- 6. Press **◀** to stop recording.
- 7. Your line-in recording will be saved on your player as a PCM file (.wav extension). You can find this file under **Recordings > Recordings library > Line-in recordings**.



TIP

You can listen to the recording with your headphone while the recording is being made.

Play your recording

From the main menu, select **Recordings > Recordings library**. The following options are available:

Recordings

MIC recordings	▶ Recordings listed in TIME order
Line-in recordings	▶ Recordings listed in TIME order
FM recordings*	▶ Recordings listed in TIME order

- 1. Select the recording you want to hear.
- 2. Press **▶||** to play the recording of your choice.

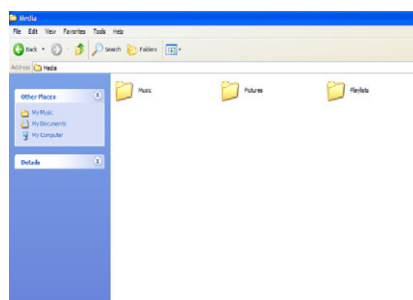
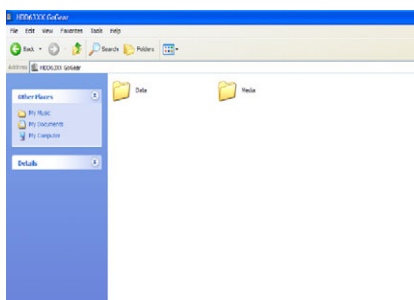
* FM radio is only available for certain regions. It is not available for Europe.

Delete your recording

1. While playing back a recording, press [MENU](#).
2. Select **Delete recording**.
3. A message **Delete [recording name]?** will be displayed.
4. Press ► to confirm.
5. A message **Recording [recording name] deleted** will be displayed.

Upload your recordings to the computer

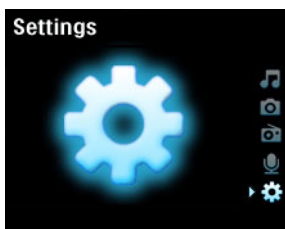
1. Connect the player to your computer.
2. Your player will be identified as **Philips GoGear** in **Windows Explorer**.
3. Go to **Data > Recordings**. You will find **FM recordings**, **Line-in recordings** and **Voice recordings** folders.



4. Drag and drop your files to any desired location on your computer.

Settings

1. From the main menu, select **Settings**.



2. Use the [VERTICAL TOUCH STRIP](#) to select an option.
3. Press ► to go to the next level or ◀ to return to previous level.
4. Press ► to confirm your selection.
5. Press ◀ to exit the **Settings** menu.

The following options are available:

Settings	Options		Description
Language	English, French, Italian, German, Spanish, Dutch, Swedish, Portuguese, Simplified Chinese, Traditional Chinese, Korean, Japanese		Choose the language for display on screen
Play mode	Shuffle All	On / Off	Choose shuffle On to play selected tracks at random
	Repeat	No Repeat / Repeat One / Repeat All	Choose Repeat One or Repeat All to keep looping selected tracks
Sound Settings	SRS WOW, Rock, Funk, Techno, HipHop, Classical, Jazz, Spoken Word, Custom, Off		Choose the equalizer for best music experience
Backlight Timer	10 Sec / 30 Sec / 45 Sec / 60 Sec		Choose the time for backlight display
Contrast	Levels 1 – 6		Choose contrast level to adjust brightness.
Skins	Skin one Skin two		Personalise your player with your favorite skin
Album Art	On / Off		Select ON to display album art for the song that you are playing
Sleep timer	15 Min / 30 Min / 60 Min / 90 Min/ 120 Min / Off		Choose sleep timer to turn off your player automatically after 15, 30, 60, 90, or 120 minutes
Time and date	Set time Set date Show time in header	AM / PM On / Off	Set your player's date and time and choose whether to display it
Clicker sound	Device	On / Off	Choose to hear a clicker sound from the player when you touch the touchpad or buttons
	Headphones	On / Off	Choose to hear a clicker sound via the headphones when you touch the touchpad or buttons
Information	Information summary Call center number	Capacity / Available space / Firmware version / Support site	Displays information about your player

Music library settings	Reset play count		Reset play count for "My most played" playlist to zero
Recording settings	Silence detection	On/ Off	Silence detection during Line-in recording will split the recording into various separate tracks
Radio settings	Europe / Americas / Asia		Choose the region in which you operate the FM
Demo mode	Start		Start demo mode (press power for 4 seconds to exit this mode)
Factory settings	Restore Factory settings		Restore to default factory settings

Using your player to store and carry data files

You can use your player to store and carry data files by copying data files into the **Data** folder of your player via **Windows Explorer**.

Updating your player

Your player is controlled by an internal program called firmware. New versions of the firmware may be released after you have purchased your player.

A software program called Philips Device Manager will monitor the firmware status of your player and notify you if a new firmware is available. You need an internet connection for this.

Install Philips Device Manager from the supplied CD or download the latest version from www.philips.com/support or www.usasupport.philips.com (for U.S. residents)

Every time you connect your player to your computer, **Philips Device Manager** will automatically connect to the Internet and check for updates.

Manually check whether your firmware is up to date

1. Power your player with the supplied AC/DC adapter.
2. Connect your player to the computer.
3. Launch **Philips Device Manager** from **Start > Programs > Philips Device Manager**.



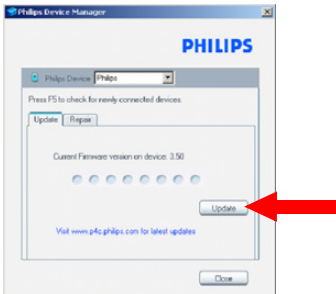
Philips Device Manager

4. Select your device.

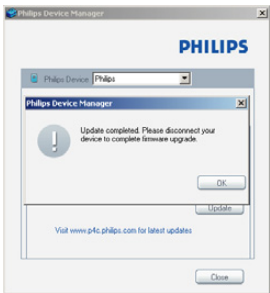


5. Click **Update**.

6. **Philips Device Manager** will check whether a new firmware is available on the internet and install it on your player.



7. When **Update completed** appears on the screen, click **OK** and disconnect the player.



8. A message **Updating firmware** will be displayed.



9. Your player is ready for use again after restart.

Troubleshooting

My player skips tracks

The skipped track may be protected. You may not have sufficient rights to play the skipped track on your player. Check the music rights with the song provider.

My Player is not recognised by Windows

Make sure your PC is running Windows XP.

My player cannot power ON

Your device battery may be out of power due to long period of non-usage.

Charge your player.

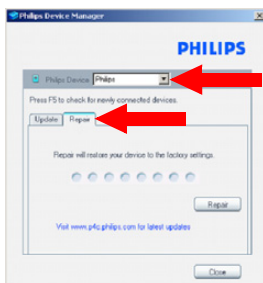
In case of device error, connect your player to the computer and use **Philips Device Manager** to restore your player.

1. Launch **Philips Device Manager** from **Start > Programs > Philips Device Manager**.



Philips Device
Manager

2. Select your device.
3. Select **Repair** tab.



4. Click **Repair**.

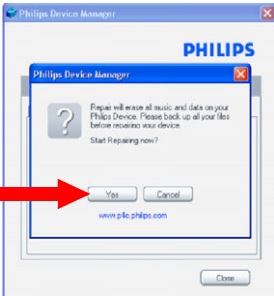


5. The repair process will start.

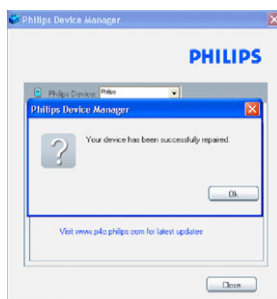


IMPORTANT!
All your contents will be erased from your player. Therefore, please back up your files before repairing. After repair, simply synchronise your player again to transfer music to your player.

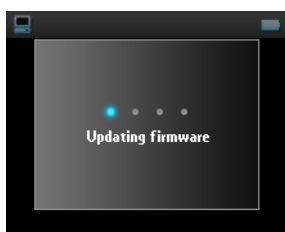
6. Click **Yes** to proceed.



7. After the repair process is completed, click **OK** and disconnect your player.



8. A message **Updating firmware** will be displayed.



9. Your player is ready for use again after restart.

There is no Music on my player after transfer

If you cannot find the songs that you have transferred to your player, check the following:

1. Did you transfer using **Windows Media Player**? Files transferred via other means will only be recognised as data files. They will neither appear in the music library of your player nor can the songs be played.
2. Are your songs in MP3 or WMA format? Other formats will not playback on the player.

There are no pictures on my player after transfer

If you cannot find the pictures that you have transferred to your player, check the following:

1. Did you transfer your pictures using **Windows Media Player**? Files transferred via other means will not appear on your device.
2. Is the **Philips Device Plug-in** installed on your computer? Immediately after you have transferred your pictures in **Windows Media Player**, you should see a Philips screen pop-up. If it does not appear, then the Plug-in is probably missing. To check whether this Plug-in is available on your computer, go to **Control Panel > Add or Remove Programs** and check if **Philips Device Plug-in** is listed. If not, re-install the software from the supplied CD.

3. You may have disconnected your device too soon after the picture transfer in **Windows Media Player** was finished. Always wait for the Philips pop-up message to show and disappear before you disconnect your device.
4. Are your pictures in JPEG format? Pictures in other formats cannot be transferred to your player.

My GoGear player hangs

1. In the unlikely event that your player hangs, do not panic. Simply push and hold down **ON/OFF HOLD** slider to **ON/OFF** position and press **VOLUME +** at the same time. Hold until the player shuts down.
2. The existing contents on your player will not be erased.
3. If nothing happens, recharge the battery for at least 4 hours and try to power on or reset again. If this does not work, you might have to repair your player with **Philips Device Manager**. (see page 42)

My player is full and I have less songs on my player than I expected

Your player has a hard disk memory to store songs. Check your model number to see the actual hard disk size. You will be able to store more songs on your player if you use WMA formatted songs in 64 kbs with variable bitrate.

Poor radio reception*

If you cannot achieve a good reception from your **GoGear** radio, check the following:

1. Make sure you have plugged the original headphone into your **GoGear** player correctly.
2. The radio signal might be poor when you are indoors. We suggest that you use your player outdoors.

* FM radio is only available for certain regions. It is not available for Europe.

Safety and Maintenance

General maintenance

To avoid damage or malfunction:

- Handle your hard disk Digital Audio Player with care. Please use the protective pouch for optimal shock protection.
- Do not expose the player to excessive heat caused by heating equipment or direct sunlight.
- Do not drop your player or allow objects to fall on your player.
- Do not allow your player to be submersed in water. Do not expose headphone socket or battery compartment to water; as water entering the set may cause major damage.
- Do not use any cleaning agents containing alcohol, ammonia, benzene, or abrasives as these may harm the set.
- Active mobile phones in the vicinity may cause interference.
- Backup your files. Please ensure that you retain the original files you have downloaded to your device. Philips is not responsible for any loss of data if the product becomes damaged or not readable / legible.
- Manage (transfer, delete, etc.) your music files only with the supplied music software to avoid problems!

About operating and storage temperatures

- Operate in a place where temperature is always between 0 and 35° C (32 to 95° F).
- Store in a place where temperature is always between -20 and 45° C (-4 to 113° F).
- Battery life may be shortened in low temperature conditions.

Hearing safety



Listen at a moderate volume. Using the headphone at high volume can impair your hearing. We recommend headphone no. SHE9500 for this product.

Important (for models supplied earphones):

Philips guarantees that its audio players comply with the maximum sound power as determined by the relevant regulatory bodies only when used with the original headphones supplied with this product. In case the headphone needs to be replaced, we recommend that you contact your retailer to order a model identical to that of the original headphone provided by Philips.

Traffic safety

Do not use the headphone while driving or cycling as you may cause an accident.

Copyright information

- All other brands and product names are trademarks of their respective companies or organizations.
- Unauthorised duplication of any recordings whether downloaded from the internet or made from audio CDs is a violation of copyright laws and international treaties.
- The making of unauthorised copies of copy-protected material, including computer programmes, files, broadcasts and sound recordings, may be an infringement of copyrights and constitute a criminal offence. This equipment should not be used for such purposes.

Data logging

Philips is committed to improving the quality of your product and enhancing the Philips user experience. To understand the usage profile of this device, this device logs some info/data to the non-volatile memory region of the device. These data are used to identify and detect any failures or problems you as a user may experience while using the device. The data stored, for example, will be the duration of playback in music mode, duration of playback in tuner mode, how many times battery low was encountered, etc. The data stored do not reveal the content or media used on the device or the source of downloads. The data stored on the device are retrieved and used ONLY if the user returns the device to the Philips service centre and ONLY to simplify error detection and prevention. The data stored shall be made available to user on user's first request.

Disposal of your old product

Your product is designed and manufactured with high quality materials and components, which can be recycled and reused.



When this crossed-out wheeled bin symbol is attached to a product, it means the product is covered by the European Directive 2002/96/EC.

Please be informed about the local separate collection system for electrical and electronic products.

Please act according to your local rules and do not dispose of your old products with your normal household waste. The correct disposal of your old product will help prevent potential negative consequences to the environment and human health.

Modifications

Modifications not authorised by the manufacturer may void user authority to operate this device.

Notice for the USA



Philips
HDD6320
HDD6330
HDD6335

Note:

This equipment has been tested and found to comply with the limits for a Class B digital device, pursuant to part 15 of the FCC Rules. These limits are designed to provide reasonable protection against harmful interference in a residential installation. This equipment generates, uses, and can radiate radio frequency energy and, if not installed and used in accordance with the instruction manual, may cause harmful interference to radio communications.

However, there is no guarantee that interference will not occur in a particular installation. If this equipment does cause harmful interference to radio or television reception, which can be determined by turning the equipment off and on, the user is encouraged to try to correct the interference by one or more of the following measures:

- Relocate the receiving antenna.
- Increase the separation between the equipment and receiver.
- Connect the equipment into an outlet on a circuit different from that to which the receiver is connected.
- Consult the dealer or an experienced radio/TV technician for help.

Notice for Canada

This Class B digital apparatus complies with Canadian ICES-003.

The set complies with the FCC-Rules, Part 15 and with 21 CFR 1040.10.

Operation is subject to the following two conditions:

1. This device may not cause harmful interference, and
2. This device must accept any interference received, including interference that may cause undesired operation.

Notice for the European Union

This product complies with the radio interference requirements of the European Union.

Technical data

Power supply	830 mAh Li-ion internal rechargeable battery Multi-voltage charger / adaptor: 4 hours full charge; 1 hour fast charge	
Dimensions	64 x 104 x 16.8 mm	
Weight	180 g	
Picture / Display	White backlight LCD, 220 x 176 pixels, 65K colours	
Sound	Channel separation	50 dB
	Equalizer settings	Rock, Pop, Jazz, Classical, Dance, Electronica, Lounge, RnB, Hip Hop, Spoken Word
	Frequency response	20 - 16 000 Hz
	Signal to noise ratio	> 82 dB
	Output Power (RMS)	2 x 5 mW

Audio Playback

Play time	15 hours*	
Compression format	MP3 (8-320 kbps and VBR)	
	WAV	
	WMA (32-192 kbps; Sample rates: 8, 11.025, 16, 22.050, 24, 32, 44.1, 48 kHz)	
ID3-tag support	Album title, Genre title, Track title and artist name	
Audio Capturing	Built-in microphone	Mono

Storage Media

Built-in memory capacity	30GB** micro hdd	
Tuner / Reception / Transmission	Tuner band: FM***	
Connectivity	Headphone 3.5 mm, USB 2.0, Philips dock connector, 5V DC	
Music and picture transfer	via Windows Media Player 10	
Data transfer	via Windows Explorer	
System Requirements	Windows® XP (SP1 or above)	
	Pentium II or better	
	64 MB RAM	
	100 MB hard disk space	
	Internet connection	
	Microsoft Internet Explorer 5.5 or later	
	Video display card	
	Soundcard	
	USB port	

* Battery life varies according to usage.

** Note that some operating systems display capacity in units of "GB" where $1.0 \text{ GB} = 2^{30} = 1,073,741,824$ bytes. The resulting "GB" capacity displayed by the OS will be smaller because of using this base-2 definition for "Gigabyte".

*** FM radio is only available for certain regions. It is not available for Europe.

PHILIPS reserves the right to make design and specification changes for product improvement without prior notice.

Cameras supported

- Aiptek Pocket DV-4500
- Canon DIGITAL IXUS II
- Canon DIGITAL IXUS 400
- Canon IXY DIGITAL 500
- Canon PowerShot G3
- Canon PowerShot G5
- Canon PowerShot G6
- Canon PowerShot SD500
- Casio Exilim EX-Z55
- DigiLife 660
- FujiFilm FinePix 420
- FujiFilm FinePix A340
- FujiFilm FinePix F610
- FujiFilm FinePix F700
- FujiFilm FinePix S5000
- Gateway DC-M42
- Gateway DC T-50
- Hewlett-Packard Photosmart M407
- Hewlett-Packard Photosmart R507
- Hewlett-Packard Photosmart R707
- Hewlett-Packard Photosmart 945
- Kodak EasyShare DX4530
- Kodak EasyShare DX7590
- Kodak EasyShare DX7630
- Konica/Minolta DiMAGE F100
- Konica/Minolta DiMAGE Xt
- Konica/Minolta DiMAGE Zi
- Nikon Coolpix 2200
- Nikon Coolpix 3100
- Nikon Coolpix 4300
- Nikon Coolpix E2500
- Olympus CAMEDIA AZ-I
- Olympus C-7000 Zoom
- Olympus Stylus 300 Digital
- Olympus µ-mini Digital
- ORite VC2110
- Panasonic Lumix DMC-FZ10K
- Pentax Optio S40
- Samsung Digimax 360
- Samsung Digimax 370
- Sony Cyber-shot® DSC-P10
- Sony Cyber-shot DSC-P93
- Sony Cyber-shot DSC-T1
- Sony Cyber-shot DSC-T1
- Sony Cyber-shot DSC-V1
- Sony Cyber-shot U DSC-U10
- Vivitar Vivicam 3345

"This product is protected by certain intellectual property rights of Microsoft Corporation. Use or distribution of such technology outside of this product is prohibited without a license from Microsoft or an authorized Microsoft subsidiary.

Content providers are using the digital rights management technology for Windows Media contained in this device ("WM-DRM") to protect the integrity of their content ("Secure Content") so that their intellectual property, including copyright, in such content is not misappropriated. This device uses WM-DRM software to play Secure Content ("WM-DRM Software"). If the security of the WM-DRM Software in this device has been compromised, Microsoft may revoke (either on its own or upon the request of the owners of Secure Content ("Secure Content Owners")) the WM-DRM Software's right to acquire new licenses to copy, display and/or play Secure Content. Revocation may also prevent your device's ability to transfer, store, copy, display and/or play Secure Content which you have previously stored on your Device. Revocation does not alter the WM-DRM Software's ability to play unprotected content. A list of revoked WM-DRM Software is sent to your device whenever you download a license for Secure Content from the Internet or from a PC. Microsoft may, in conjunction with such license, also download revocation lists onto your device on behalf of Secure Content Owners, which may disable your device's ability to copy, display and/or play Secure Content.

In the event of revocation, Philips will attempt to make available software updates to restore some or all of your device's ability to transfer, store, access, copy, display and/or play Secure Content. However, the ability to make such updates available does not rest solely with Philips. Philips does not guarantee that, after revocation, such software updates will be available. If such updates are not available, your device will not have the ability to transfer, store, copy, display and/or play Secure Content – even Secure Content which you have previously stored on your device.

In addition, even if such software updates are available, they may not enable your Device to transfer, store, copy, display, and/or play Secure Content which was previously stored on your Device. In some cases you may be able to transfer the content from the PC. In other cases, you may have to repurchase previously obtained Secure Content.

To summarize – Microsoft, Secure Content Owners, and Secure Content distributors may deny you access, or restrict your access, to Secure Content. They may also disable your device's ability to transfer, store, copy, display and/or play Secure Content even after you have paid for and obtained it. Neither your consent nor the consent or approval of Philips is necessary for any of them to deny, withhold or otherwise restrict your access to Secure Content or to disable your device's ability to transfer, store, access, copy, display, and/or play Secure Content. Philips does not guaranty that you will be able to transfer, store, access, copy, display, and/or play Secure Content."



 Be responsible
Respect copyrights

Specifications are subject to change without notice.
Trademarks are the property of Koninklijke Philips Electronics N.V.
or their respective owners
2005 © Koninklijke Philips Electronics N.V. All rights reserved.

www.philips.com



Printed in China