

Register your product and get support at
www.philips.com/welcome

MCD909



EN	User manual	3	FR	Mode d'emploi	137
DA	Brugervejledning	35	IT	Manuale utente	171
DE	Benutzerhandbuch	67	NL	Gebruiksaanwijzing	205
ES	Manual del usuario	103	SV	Användarhandbok	239

PHILIPS

Contents

1 Important	4	6 Listen to radio	22
Important Safety Instructions	4	Tune to a radio station	22
Hearing safety	5	Program radio stations automatically	22
Notice	5	Program radio stations manually	22
		Select a preset radio station	23
2 Your DVD Micro Theater	7	Set RDS clock	23
Introduction	7	Show RDS information	23
What's in the box	7		
Overview of the main unit	8	7 Adjust sound	24
Overview of the remote control	9	Adjust volume level	24
		Select automatic loudness control	24
3 Connect	11	Adjust bass level	24
Connect control cable	11	Mute sound	24
Preparations	11	Adjust treble level	24
Connect speakers	11		
Connect FM antenna	12	8 Adjust settings	24
Connect audio cables	12	General setup	24
Connect video cables	13	Audio setup	25
Connect an external audio device		Video setup	25
(optional)	15	Preferences	26
Listen through headphone	16		
Connect power	16	9 Other features	28
		Set the alarm timer	28
4 Get started	16	Set the sleep timer	28
Install remote control batteries	16	Listen to an audio device	28
Set clock	17		
Activate demonstration mode	17	10 Product information	29
Turn on/off decoration light	17	Specifications	29
Turn on	17	Supported disc formats	30
Select the correct source on TV	17	USB playability information	30
Select the correct TV system	17		
Turn on Progressive Scan	18	11 Troubleshooting	31
Change system menu language	18		
		12 Glossary	32
5 Play	19		
Play discs	19		
Play from USB devices	20		
Play DivX video	20		
View pictures	20		
Play musical slideshow	20		
Play control	21		
Play options	21		

1 Important

Important Safety Instructions

- ① Read these instructions.
- ② Keep these instructions.
- ③ Heed all warnings.
- ④ Follow all instructions.
- ⑤ Do not use this apparatus near water.
- ⑥ Clean only with dry cloth.
- ⑦ Do not block any ventilation openings. Install in accordance with the manufacturer's instructions.
- ⑧ Do not install near any heat sources such as radiators, heat registers, stoves, or other apparatus (including amplifiers) that produce heat.
- ⑨ Protect the power cord from being walked on or pinched, particularly at plugs, convenience receptacles, and the point where they exit from the apparatus.
- ⑩ Only use attachments/accessories specified by the manufacturer.
- ⑪ Use only with the cart, stand, tripod, bracket, or table specified by the manufacturer or sold with the apparatus. When a cart is used, use caution when moving the cart/apparatus combination to avoid injury from tip-over.
- ⑫ Unplug this apparatus during lightning storms or when unused for long periods of time.
- ⑬ Refer all servicing to qualified service personnel. Servicing is required when the apparatus has been damaged in any way, such as power-supply cord or plug is damaged, liquid has been spilled or



objects have fallen into the apparatus, the apparatus has been exposed to rain or moisture, does not operate normally, or has been dropped.

- ⑭ **Battery usage CAUTION** – To prevent battery leakage which may result in bodily injury, property damage, or damage to the unit:
 - Install all batteries correctly, + and - as marked on the unit.
 - Do not mix batteries (old and new or carbon and alkaline, etc.).
 - Remove batteries when the unit is not used for a long time.
- ⑮ **Apparatus shall not be exposed to dripping or splashing.**
- ⑯ **Do not place any sources of danger on the apparatus (e.g. liquid filled objects, lighted candles).**



This 'bolt of lightning' indicates uninsulated material within your unit may cause an electrical shock. For the safety of everyone in your household, please do not remove product covering.

The 'exclamation point' calls attention to features for which you should read the enclosed literature closely to prevent operating and maintenance problems.

WARNING: To reduce the risk of fire or electric shock, this apparatus should not be exposed to rain or moisture and objects filled with liquids, such as vases, should not be placed on this apparatus.

CAUTION: To prevent electric shock, match wide blade of plug to wide slot, fully insert. Risk of overheating! Never install this apparatus in a confined space. Always leave a space of at least four inches around this apparatus for ventilation. Ensure curtains or other objects never cover the ventilation slots on this apparatus.



Caution

- Use of controls or adjustments or performance of procedures other than herein may result in hazardous radiation exposure or other unsafe operation.



Warning

- Never remove the casing of this apparatus.
- Never lubricate any part of this apparatus.
- Never place this apparatus on other electrical equipment.
- Keep this apparatus away from direct sunlight, naked flames or heat.
- Never look into the laser beam inside this apparatus.
- Ensure that you always have easy access to the power cord, plug or adaptor to disconnect this apparatus from the power.

Hearing safety

Listen at a moderate volume.

- Using headphones at a high volume can impair your hearing. This product can produce sounds in decibel ranges that may cause hearing loss for a normal person, even for exposure less than a minute. The higher decibel ranges are offered for those that may have already experienced some hearing loss.
- Sound can be deceiving. Over time your hearing 'comfort level' adapts to higher volumes of sound. So after prolonged listening, what sounds 'normal' can actually be loud and harmful to your hearing. To guard against this, set your volume to a safe level before your hearing adapts and leave it there.

- Set your volume control at a low setting.
- Slowly increase the sound until you can hear it comfortably and clearly, without distortion.
- Prolonged exposure to sound, even at normally 'safe' levels, can also cause hearing loss.
- Be sure to use your equipment reasonably and take appropriate breaks.
- Listen at reasonable volumes for reasonable periods of time.
- Be careful not to adjust the volume as your hearing adapts.
- Do not turn up the volume so high that you can't hear what's around you.
- You should use caution or temporarily discontinue use in potentially hazardous situations. Do not use headphones while operating a motorized vehicle, cycling, skateboarding, etc.; it may create a traffic hazard and is illegal in many areas.

Notice

This product complies with the radio interference requirements of the European Community.



Any changes or modifications made to this device that are not expressly approved by Philips Consumer Lifestyle may void the user's authority to operate the equipment.

Recycling

Your product is designed and manufactured with high quality materials and components, which can be recycled and reused.



When you see the crossed-out wheel bin symbol attached to a product, it means the product is covered by the European Directive 2002/96/EC:



Never dispose of your product with other household waste. Please inform yourself about the local rules on the separate collection of

electrical and electronic products. The correct disposal of your old product helps prevent potentially negative consequences on the environment and human health.

Your product contains batteries covered by the European Directive 2006/66/EC, which cannot be disposed of with normal household waste.

When you see the crossed-out wheel bin symbol with the chemical symbol 'Pb', it means that the batteries comply with the requirement set by the directive for lead:



Please inform yourself about the local rules on separate collection of batteries. The correct disposal of batteries helps prevent potentially negative consequences on the environment and human health.

Environmental information

All unnecessary packaging has been omitted. We have tried to make the packaging easy to separate into three materials: cardboard (box), polystyrene foam (buffer) and polyethylene (bags, protective foam sheet.)

Your system consists of materials which can be recycled and reused if disassembled by a specialized company. Please observe the local regulations regarding the disposal of packaging materials, exhausted batteries and old equipment.

The making of unauthorized copies of



**Be responsible
Respect copyrights**

copy-protected material, including computer programs, files, broadcasts and sound recordings, may be an infringement of copyrights and constitute a criminal offence. This equipment should not be used for such purposes.



HDMI, and HDMI logo and High-Definition Multimedia Interface are trademarks or registered trademarks of HDMI licensing LLC.



DOLBY DIGITAL Manufactured under license from Dolby Laboratories. Dolby and the double-D symbol are trademarks of Dolby Laboratories.



Windows Media and the Windows logo are trademarks, or registered trademarks of Microsoft Corporation in the United States and/or other countries.



ULTRA DivX, DivX

Certified, and associated logos are trademarks of DivX, Inc. and are used under license.

Official DivX® Ultra Certified product.

Plays all versions of DivX® video (including DivX® 6) with enhanced playback of DivX® media files and the DivX® Media Format.

This apparatus includes this label:



Note

- The type plate is located on the bottom of the apparatus.

Norge

Typeskilt finnes på apparatens underside. Observer: Nettbryteren er sekundært innkoplet. Den innebygde nettdelen er derfor ikke frakoplet nettet så lenge apparatet er tilsluttet nettkontakten.

For å redusere faren for brann eller elektrisk støt, skal apparatet ikke utsettes for regn eller fuktighet.

2 Your DVD Micro Theater

Congratulations on your purchase, and welcome to Philips! To fully benefit from the support that Philips offers, register your product at www.Philips.com/welcome.

Introduction

With this apparatus, you can:

- watch video from DVD/VCD/SVCD or USB devices
- enjoy audio from discs or USB devices
- view pictures from discs or USB devices
- Listen to FM radio

You can enrich sound output with these sound effects:

- Dynamic Bass Boost (DBB)
- Bass/treble enhancement

The apparatus supports these media/disc formats:



You can play DVD discs with the following region codes:

DVD region code	Countries
 	Europe

Premium Hi-Fi tubes

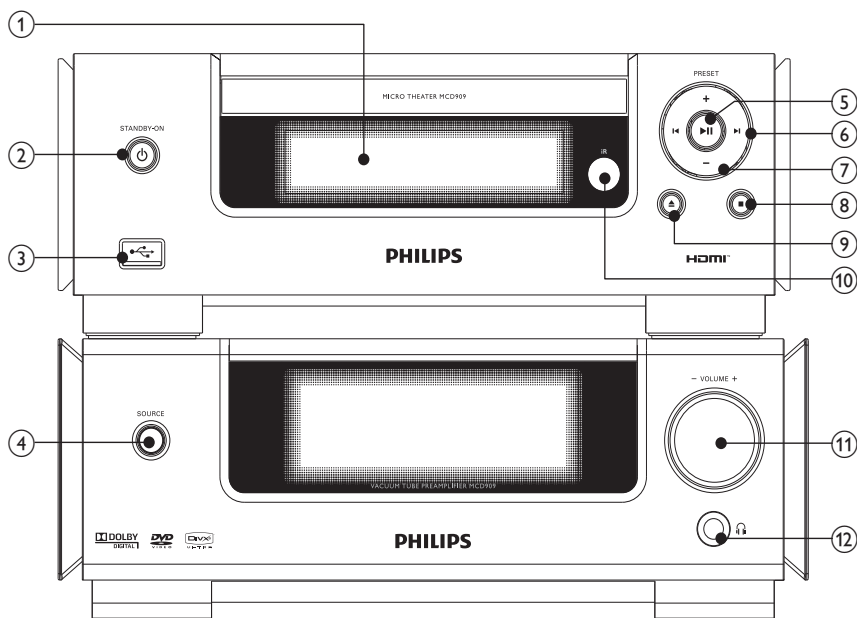
With built-in Hi-Fi tubes, you can now experience sound of the highest quality that is usually only associated with premium audiophile systems. The analog nature of the tubes provides a more pleasing sound to our non-linear hearing system. Sound from a tube has low distortion and is always preferred for its clean and detailed, warm and life-like audio quality.

What's in the box

Check and identify the contents of your package:

- Main unit
- 2 speakers
- Speaker cables
- Remote control with battery
- Composite video cable (yellow)
- Control cable
- SCART adapter
- Power cord
- FM wire antenna
- User manual
- Quick start guide

Overview of the main unit



① Display panel

- Display current status.

② STANDBY-ON

- Turn on the apparatus or switch to the Eco Power standby mode.

③

- USB socket.

④ SOURCE

- Select a source.

⑤

- Start or pause play.

⑥

- Skip to the previous/next track.
- Search within a track.
- Skip to the previous/next title or chapter.
- Tune to a radio station.

⑦ PRESET +/-

- Select a preset radio station.

⑧

- Stop play.
- In demo mode, activate or deactivate demonstration.

⑨

- Open or close the disc compartment.

⑩ Remote control sensor

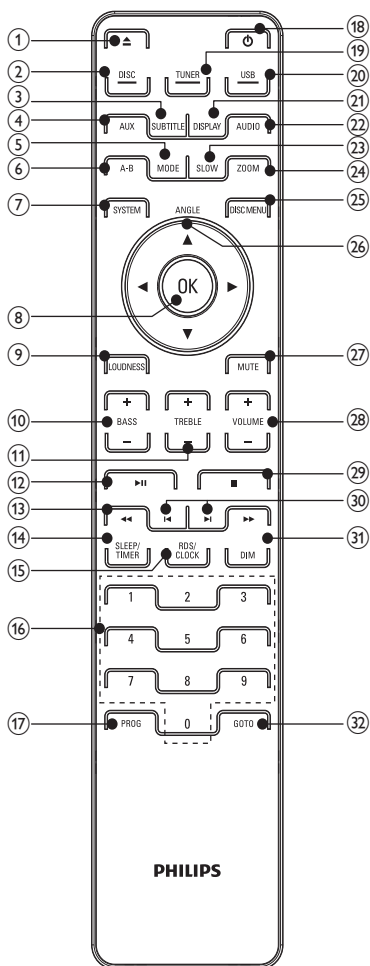
⑪ VOLUME +/-

- Adjust volume.
- Adjust time.

⑫

- Headphone socket.

Overview of the remote control



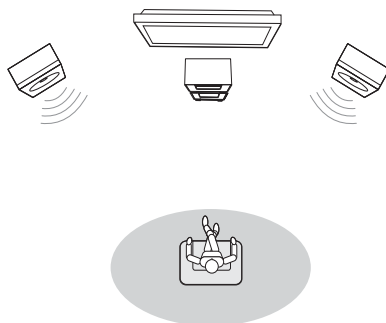
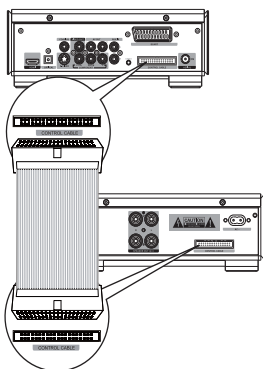
- ① ▲
 - Open or close the disc compartment.
- ② DISC
 - Select disc source.
- ③ SUBTITLE
 - Select a subtitle language.
- ④ AUX
 - Select external audio device source.
- ⑤ MODE
 - Select repeat play modes.
 - Select shuffle play modes.
- ⑥ A-B
 - Repeat a specific section within a track/disc.
- ⑦ SYSTEM
 - Access or exit the system setup menu.
- ⑧ OK
 - Confirm a selection.
- ⑨ LOUDNESS
 - Turn on or off automatic loudness adjustment.
- ⑩ BASS +/-
 - Adjust bass level.
- ⑪ TREBLE +/-
 - Adjust treble level.
- ⑫ ►►
 - Start or pause play.
- ⑬ ◀◀▶▶
 - Search within a track.
 - Tune to a radio station.
- ⑭ SLEEP/TIMER
 - Set the sleep timer.
 - Set the alarm timer.
- ⑮ RDS/CLOCK
 - For selected FM radio stations: display RDS information.
 - Set the clock.
 - View the clock.
- ⑯ Numeric keypad
 - Select a title/chapter/track directly.
- ⑰ PROG
 - Program radio stations.
- ⑱ ⏻
 - Turn on the apparatus or switch to the Eco Power standby mode.

- ⑲ **TUNER**
 - Select tuner source.
- ⑳ **USB**
 - Select USB device source.
- ㉑ **DISPLAY**
 - Display play information on a connected TV.
- ㉒ **AUDIO**
 - For VCD, select stereo, mix-mono, left or right channel.
 - For DVD/DivX video, select an audio language.
- ㉓ **SLOW**
 - For video discs: select a slow play mode.
- ㉔ **ZOOM**
 - Zoom in or out a picture/video image on the TV screen.
- ㉕ **DISC MENU**
 - For video discs: access or exit the disc menu.
 - For video discs with playback control(PBC): turn on/off PBC.
- ㉖ **Angle ▲/▼/◀/▶**
 - For menus: navigate up/down/left/right.
 - Move an enlarged picture up/down/left/right.
 - Rotate or invert pictures.
 - **Angle:** Select a DVD camera angle.
- ㉗ **MUTE**
 - Mute or restore volume.
- ㉘ **VOLUME+/-**
 - Adjust volume.
 - Adjust time.
- ㉙ **■**
 - Stop play.
- ㉚ **◀◀▶▶**
 - Skip to the previous/next track.
 - Skip to the previous/next title or chapter.
 - Select a preset radio station.
- ㉛ **DIM**
 - Turn on/off the main set decoration light.
- ㉜ **GOTO**
 - During disc play, specify a position to start play.

3 Connect

Connect control cable

- 1 Connect the supplied control cable to the **CONTROL CABLE** jacks on the main unit.



Preparations

- 1 Place the apparatus near to the TV.
- 2 Place the front left and right speakers at equal distance from the TV and at an angle of approximately 45 degrees from the listening position.

Note

- To avoid magnetic interference or unwanted noise, never place this apparatus and speakers too close to any radiation devices.

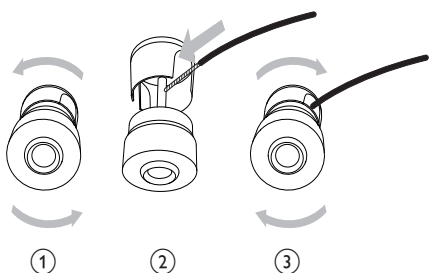
Connect speakers

Note

- Insert the stripped portion of each speaker wire into the socket completely.
- For optimal sound, use the supplied speakers only.
- Connect only speakers with impedance that is the same or higher than the supplied speakers.
- The **DEMO** jack is only applicable to the demo unit that is not included in the apparatus. Do not attempt to connect any other device to the apparatus through this jack.

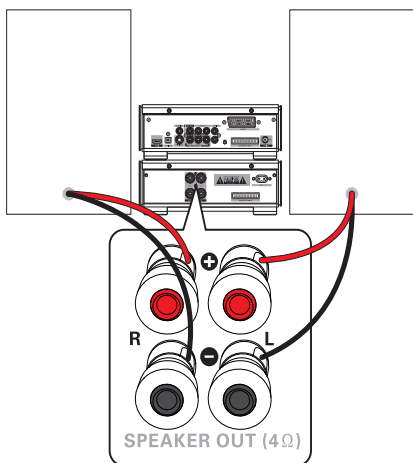
For the main unit side:

- 1 Unscrew the speaker connectors.
- 2 Insert fully the red end of a speaker cable into the left red (+) connector.
- 3 Screw the left red (+) connector to secure the cable.
- 4 Insert fully the silver end of a speaker cable into the left black (-) connector.
- 5 Screw the left black (-) connector to secure the cable.
- 6 Repeat steps 2-5 to insert the other speaker cable into the right connectors.



For the speaker side:

- 1 Unscrew the speaker connectors.
- 2 For the left speaker, identify the speaker cable that is connected to the left connectors on the main unit.
- 3 Insert fully the red end of the speaker cable into the red (+) connector.
- 4 Screw the red (+) connector to secure the cable.
- 5 Insert fully the silver end of the speaker cable into the black (-) connector.
- 6 Screw the black (-) connector to secure the cable.
- 7 Repeat steps 2-6 for the right speaker.



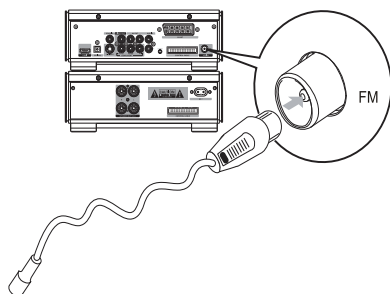
Connect FM antenna



Tip

- For optimal reception, fully extend and adjust the position of the antenna.
- For better FM stereo reception, connect an outdoor FM antenna to the **FM AERIAL** jack.
- The unit does not support MW radio reception.

- 1 Connect the supplied FM wire antenna to the **FM AERIAL** socket on the unit.

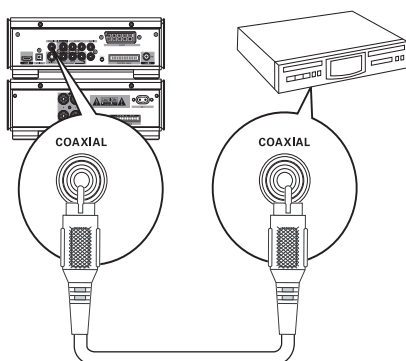


Connect audio cables

To hear audio from other audio devices as well as the accompanied speakers, select a preferred audio connection:

- Option 1: connect a coaxial cable
- Option 2: connect an optical cable
- Option 3: connect analog audio cables

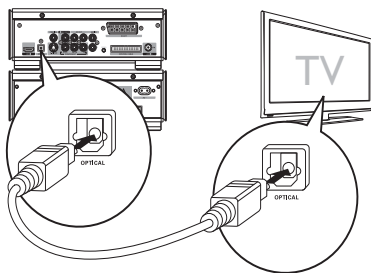
Option 1: connect coaxial cable



You can enjoy multi-channel surround sound from this apparatus when it is connected to a digital audio device.

- 1 Connect a coaxial cable (not supplied) to the digital input socket on the audio device.

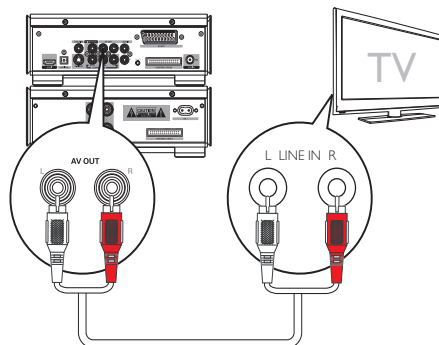
Option 2: connect optical cable



You can connect an optical cable to enjoy high-quality digital audio from this apparatus.

- 1 Connect an optical cable (not supplied) to the optical input socket on the audio device.

Option 3: connect analog audio cables



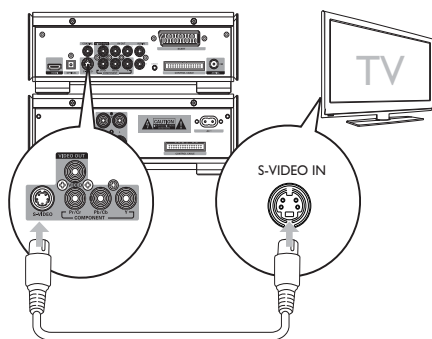
- 1 Connect an audio cable (red/white ends) to the audio input sockets on an audio device.

Connect video cables

You can select the best video connection that your TV supports.

- Option 1: connect through an S-Video cable (for a standard TV).
- Option 2: connect through a the composite video (CVBS) cable (for a standard TV).
- Option 3: connect through component video cables (for a standard TV or Progressive Scan TV).
- Option 4: connect through a SCART cable (for TV with a SCART input socket)
- Option 5: connect through an HDMI cable (for TV with an HDMI input socket)

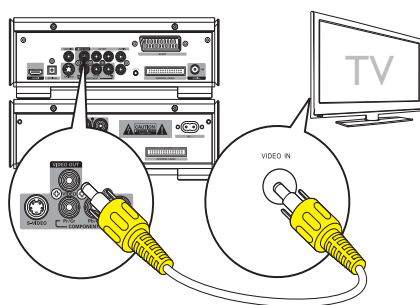
Option 1: connect S-Video cable



- 1 Connect an S-video cable (not supplied) to:

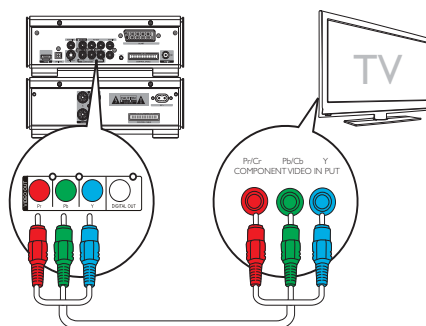
- the **S-Video** socket on this unit.
- the **S-Video** socket on the TV.

Option 2: connect composite video cable



- 1 Connect the supplied composite video cable to:
- the **VIDEO OUT** socket on this unit.
 - the video input socket on the TV.

Option 3: connect component video cables



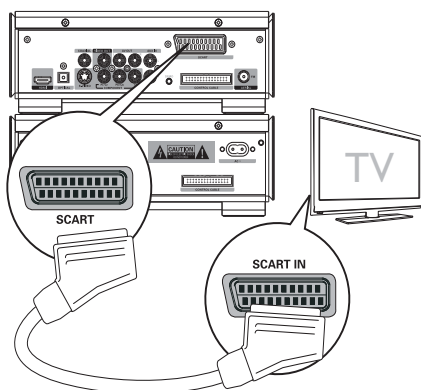
Note

- The progressive scan video quality is only available when a progressive scan TV is connected.
- If your TV does not support progressive scan, you cannot view the picture.
- For how to activate progressive scan on your TV, refer to the TV user manual.

Connect a progressive scan TV through component video for higher quality video.

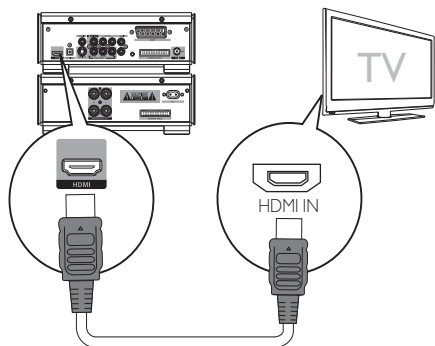
- 1 Connect component video cables (red/blue/green - not supplied) to:
- the **VIDEO OUT (Pr/Cr Pb/Cb Y)** sockets on this unit.
 - the component input sockets on the TV.

Option 4: connect SCART cable



- 1 Connect a scart cable to:
 - the **SCART** socket on this unit.
 - the **SCART** socket on the TV.

Option 5: connect HDMI cable



Connect HDMI (High Definition Multimedia Interface), DVI (Digital Visual Interface), or HDCP (High-bandwidth Digital Contents Protection)-compliant TVs through HDMI for the best picture quality. This connection transmits both video and audio signals. Through this connection, you can watch DVDs that contain HD (High-Definition) content.

Note

- Some TVs do not support HDMI audio transmission.

- 1 Connect an HDMI cable (not supplied) to:
 - the **HDMI** socket on this unit.
 - the **HDMI** socket on the TV.

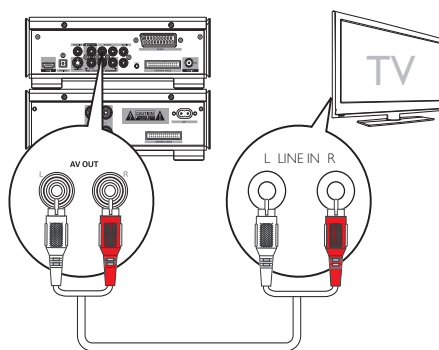
Note

- If your TV has only a DVI connection, connect through a HDMI/DVI adaptor. An extra audio connection is needed to complete this connection.

Connect an external audio device (optional)

You can also listen to an external audio device through this unit.

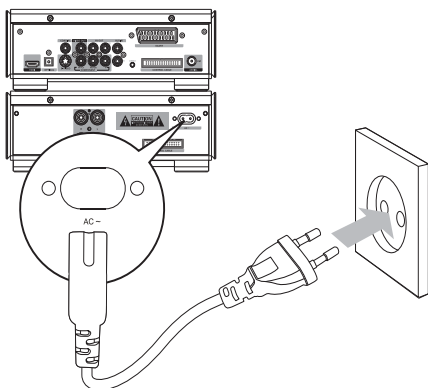
- 1 Connect audio cables (red/white) to:
 - the **AUX IN** sockets on this unit.
 - the audio output sockets on the external audio device.



Listen through headphone

- 1 Plug a headphone into the  socket.

Connect power



! Caution

- Risk of product damage! Ensure that the power supply voltage corresponds to the voltage printed on the back or the underside of the unit.
- Before connecting the AC power cord, ensure you have completed all other connections.

- 1 Connect the AC power cord to the wall socket.

4 Get started

! Caution

- Use of controls or adjustments or performance of procedures other than herein may result in hazardous radiation exposure or other unsafe operation.

Always follow the instructions in this chapter in sequence.

If you contact Philips, you will be asked for the model and serial number of this apparatus. The model number and serial number are on the back of the apparatus. Write the numbers here:

Model No. _____

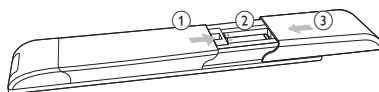
Serial No. _____

Install remote control batteries

! Caution

- Risk of explosion! Keep batteries away from heat, sunshine or fire. Never discard batteries in fire.
- Risk of decreased battery life! Never mix different brands or types of batteries.
- Risk of product damage! When the remote control is not used for long periods, remove the batteries.

- 1 Open the battery compartment.
- 2 Insert 2 R03 AAA batteries with correct polarity (+/-) as indicated.
- 3 Close the battery compartment.



Set clock

- 1 In the Eco Power standby mode, press and hold **RDS/CLOCK** to activate the clock setting mode.
 - ↳ The hour digits are displayed and begin to blink.
- 2 Turn **VOLUME+/-** to set the hour.
- 3 Press **RDS/CLOCK** to confirm.
 - ↳ The minute digits are displayed and begin to blink.
- 4 Turn **VOLUME+/-** to set the minute.
- 5 Press **RDS/CLOCK** to confirm.

- ↳ The backlight on the display panel turns off.
- ↳ The blue Eco Power indicator turns on.



Tip

- In the Eco Power mode, you can press **CLOCK** to switch to the standby mode and view the clock (if set).
- If the system remains in the standby mode for more than 90 seconds, it switches to the Eco Power mode automatically.

Activate demonstration mode

You can see an overview of all features.

- 1 In the Eco Power standby mode, press **■** on the main unit to activate the demonstration mode.
 - ↳ A demonstration of major available features starts.

To deactivate the demonstration mode:

- 1 Press **■** on the main unit again.

Turn on/off decoration light

- 1 Press **DIM** to turn on/off the main set decoration light.

Turn on

- 1 Press **⏻**.
 - ↳ It takes 10 seconds to heat up before the apparatus turns on.

Switch to standby mode

- 1 Press **⏻** to switch the unit to Eco Power Standby mode.

Select the correct source on TV

- 1 Turn on the apparatus.
- 2 Press **DISC** to select the disc source.
- 3 Turn on the TV and then select the correct video source.
 - ↳ You should see the blue DVD background screen.



Tip

- See the TV user manual for details of how to select the correct video source.

Select the correct TV system

Change this setting if the video does not appear correctly. By default, this setting matches the most common setting for TVs in your country.

- 1 Press **SYSTEM**.
- 2 Press **▼** to select **[Video Setup]> [TV Type]** and then press **OK**.
- 3 Select a setting and then press **OK**.
 - **[PAL]** - For TV with PAL color system.
 - **[NTSC]** - For TV with NTSC color system.
 - **[Multi]** - For TV that is compatible with both PAL and NTSC.
- 4 To exit the menu, press **SYSTEM**.

Turn on Progressive Scan

Progress scan displays twice the number of frames per seconds than interlaced scanning (ordinary TV system). With nearly double the number of lines, progressive scan offers higher picture resolution and quality.

Before you turn on this feature, ensure that:

- The TV supports progressive scan signals.
- You have connected this unit with the TV through component video.

- 1 Turn on the TV.
- 2 Ensure that the TV progressive scan mode is deactivated (see the TV user manual).
- 3 Switch the TV to the correct viewing channel for this unit.
- 4 Press **DISC**.
- 5 Press **SYSTEM MENU**.
- 6 Press **▼** to select **[Video Setup]**, then press **▶**.
- 7 Select **[Progressive]>[On]**, then press **OK**.
↳ A warning message is displayed.
- 8 To proceed, select **[Ok]** and press **OK**.
↳ The progressive setup is complete.



Note

- If a blank/distorted screen is displayed, wait for 15 seconds for auto recovery or turn off progressive scan manually.

- 9 Press **SYSTEM MENU** to exit.

Change system menu language

- 1 Press **SYSTEM**.
- 2 Select **[General Setup]>[OSD Language]**, and then press **OK**.
- 3 Select an option and then press **OK**.

- 4 To exit the menu, press **SYSTEM**.

5 Play



Caution

- Risk of damage to the unit! During play, never move the unit.

Play discs



Caution

- Never look at the laser beam inside the apparatus.
- Risk of product damage! Never play discs with accessories such as disc stabilizer rings or disc treatment sheets.
- Do not push on the disc tray or put any objects other than discs on the disc compartment. It may cause the disc player to malfunction.



Note

- With some disc/file types, play may differ.
- Only the first session of a multi-session CD is played.
- This unit does not support MP3PRO audio format.
- If any special characters are present in the MP3 track name (ID3) or album name, it might not be displayed correctly on the screen because these characters are not supported.

- 1 Press **DISC** to select the disc source.
- 2 Press **▲**.
- 3 Insert a disc with the printed side facing up, and then close the disc compartment.
 - ↳ Play starts.
 - ↳ To stop play, press **■**.
 - ↳ To pause or resume play, press **▶II**.
 - ↳ For video discs, play always resumes from the point where it was last stopped.
 - ↳ To start play from the beginning, press **◀** while the message is displayed.

When you load a DVD/(S)VCD disc, a menu may be displayed on the TV screen.

To access or exit the menu manually:

- 1 Press **DISC MENU**.

For VCD with PlayBack Control (PBC) feature (version 2.0 only):

The PBC feature allows you to play VCD interactively according to the menu screen.

- 1 During play, press **DISC MENU** to enable/disable playback control.
 - ↳ When PBC is enabled, the menu screen is displayed.
 - ↳ When PBC is disabled, normal play is resumed.

For MP3/WMA audio files on a recordable DVD, CD.

- Press **▲▼** or enter a folder number to select a folder.
- Press **◀▶** to select a track or file.

You can search content fast forward or backward during play.

- Press **◀◀▶▶** to select required speed.
- To return to normal play speed, press **▶II**.
- Press **◀▶** to select the previous or next chapter/title/track.

You can select a subtitle language on DVDs or DivX® Ultra discs.

- During play, press **SUBTITLE**.




Tip

- For some DVDs, the language can only be changed from the disc menu. Press **DISC MENU** to access the menu.

Play from USB devices

Note

- Ensure that the USB device contains playable audio contents for supported formats. (See "Product information - USB playability information".)

- 1 Insert the USB connector on the device into the  socket.
- 2 Press **USB**.
- 3 Press **▲▼** to select a folder.
- 4 Press **◀▶** to select a file.
- 5 Press **▶||** to start play.
 - To stop play, press **■**.
 - To pause or resume play, press **▶||**.

Play DivX video

You can play DivX files copied onto a CD-R/RW, recordable DVD or USB device.

- 1 Insert a disc or connect a USB device.
- 2 Select a source:
 - For discs, press **DISC**.
 - For USB devices, press **USB**.
- 3 Select a file to play and press **OK**.
 - To stop play, press **■**.
 - To pause or resume play, press **▶||**.
 - To change a subtitle language, press **SUBTITLE**.

Note

- Subtitle files with the following filename extensions (.srt, .smi, .sub, .ssa, .ass) are supported but do not appear on the file navigation menu.
- The subtitle filename has to be the same as the file name of the video.

View pictures

You can view JPEG files as a slide show.

- 1 Insert a picture disc or connect a USB device.
- 2 Select a source:
 - For discs, press **DISC**.
 - For USB devices, press **USB**.
- 3 Press **▲▼** to select a folder.
- 4 Press **◀▶** to select a file.
 - To display the selected picture only, press **OK**.
 - To start slideshow, press **▶||**.
 - To return to the menu, press **DISC MENU**.
 - To preview all pictures in a folder, press **■** during slide show play.

Slide show play modes

You can view pictures as slide show in different play modes.

- 1 Press **PROG** repeatedly.

View from different angles

- 1 During play, press **Angle ▲▼/◀▶** to rotate the picture.

Play musical slideshow

Play MP3/WMA music files and JPEG photo files simultaneously to create musical slideshow. The MP3/WMA and JPEG files must be stored on the same disc or USB device.

- 1 Play MP3/WMA music.
- 2 Navigate to the photo folder/album and press **▶||** to start slideshow play.
 - ↳ Slideshow begins and continues till the end of the photo folder or album.
 - ↳ Audio continues to play till the end of the disc.
 - ↳ To return to the menu, press **DISC MENU**.

- 3 To stop slideshow play, press ■.
- 4 To stop music play, press ■ again.

Play control

Repeat and random play

You can select various repeat functions during playback. The repeat play options vary depending on the disc type.

- 1 Press **MODE** repeatedly to choose a play mode.
 - For DVD
 - **[Chapter]** (chapter): repeat the current chapter
 - **[Title]** (title): repeat the current title
 - **[All]** (repeat all): repeat the disc
 - **[Shuffle]** (shuffle): play the disc in random order
 - For VCD/MP3/CD/DivX
 - **[Track]** (track): repeat the current track
 - **[DISC]** (disc): repeat the disc
 - **[Shuffle]** (shuffle): play the disc in random order
 - **[Shuffle repeat]** (shuffle repeat): repeat the disc in random order
 - **[Repeat off]** (off): switch off the repeat mode
- 1 To return to normal play, press **MODE** repeatedly until no play mode is displayed.



Note

- Shuffle play cannot be selected when you play programmed tracks.

Repeat A-B (DVD/VCD/CD/MP3/WMA)

- 1 During music or video play, press **A-B** at the start point.

- 2 Press **A-B** at the end point.
 - ↳ The section starts to play repeatedly.
 - ↳ To cancel repeat play, press **A-B** again.



Note

- The section A and B can be set only within the same chapter/track.

Search by time or scene/track number

When playing video or music discs, you can select a scene, track or a specified point.

- 1 During play, press **GOTO** until the time or chapter/track a time field or chapter/track field is displayed.
 - For the time field, enter the play position in hours, minutes and seconds.
 - For the chapter/track field, enter the chapter/track.

Use slow motion

- 1 Press **SLOW** during playback to select the required speed (forward or backward).
 - ↳ The video is muted.
- 2 To return to normal speed, press **▶II**.



Tip

- Slow motion backward is not applicable in VCDs.

Play options

Display play information

- 1 During play, press **DISPLAY** repeatedly to show different play information on the TV.

Change camera angle

Some DVDs contain alternate scenes, such as scenes recorded from different camera angles. For such DVDs, you can select from the available alternate scenes.

- 1 During play, press **Angle** repeatedly to switch between camera angles.

Zoom in/out image

- 1 During video/picture play, press **ZOOM** repeatedly to zoom in/out the image.
 - When the image is zoomed in, you can press ◀◀▶▶/▲/▼ to pan through the image.

6 Listen to radio

Tune to a radio station

- 1 Press **TUNER**.
- 2 Press and hold ◀◀▶▶ for more than 2 seconds.
 - ↳ The radio tunes to a station with strong reception automatically.
- 3 Repeat step 2 to tune to more stations.
 - To tune to a weak station, press ◀◀/▶▶ repeatedly until you find optimal reception.

Program radio stations automatically



Note

- You can program a maximum of 20 preset radio stations.

- 1 In the tuner mode, press and hold **PROG** for more than 2 seconds to activate automatic program mode.
 - ↳ All available stations are programmed in the order of waveband reception strength.
 - ↳ The first programmed radio station is broadcast automatically.

Program radio stations manually



Note

- You can program a maximum of 20 preset radio stations.

- 1 Tune to a radio station.

- 2 Press **PROG** to activate program mode.
↳ [PROG] blinks on the display.
- 3 Press **◀▶** to allocate a number (1 to 20) to this radio station, then press **PROG** to confirm.
↳ The preset number and the frequency of the preset station are displayed.
- 4 Repeat the steps above to program other stations.



Note

- To overwrite a programmed station, store another station in its place.

Select a preset radio station

- 1 Press **◀▶** to select a preset number.



Tip

- Position the antenna as far as possible from TV, VCR or other radiation source.
- For optimal reception, fully extend and adjust the position of the antenna.

Set RDS clock

You can use time signal broadcast together with the RDS signal to set the clock of the apparatus automatically.

- 1 Tune to a RDS radio station that transmits time signals.
↳ The apparatus reads the RDS time and sets the clock automatically.



Note

- The accuracy of the transmitted time depends on the RDS station that transmits the time signal.

Show RDS information

RDS (Radio Data System) is a service that allows FM stations to show additional information. If you tune to a RDS station, a RDS icon and the station name are displayed. When automatic programming is used, RDS stations are programmed first.

- 1 Tune to a RDS station.
- 2 Press **RDS/CLOCK** repeatedly to scroll through the following information (if available):
 - ↳ Station name
 - ↳ Program type such as **[NEWS]** (news), **[SPORT]** (sport), **[POP M]** (pop music)...
 - ↳ Frequency

7 Adjust sound

Adjust volume level

- 1 During play, press **VOLUME+/-** to increase/decrease the volume level.

Select automatic loudness control

The loudness feature enables the system to increase the treble and bass sound effect at low volume automatically (the higher the volume, the lower the treble and bass increase).

- 1 During play, press **LOUDNESS** to turn on/off automatic loudness control.

Adjust bass level

- 1 During play, press **BASS +/-** to adjust bass level.

Mute sound

- 1 During play, press **MUTE** to mute or restore sound.

Adjust treble level

- 1 During play, press **TREBLE +/-** to adjust treble level.

8 Adjust settings

General setup

- 1 Press **SYSTEM**.
↳ **[General Setup]** menu is displayed.
- 2 Press **▶▶**.
- 3 Select an option and then press **OK**.
- 4 Select a setting and then press **OK**.
 - To return to the previous menu, press **◀◀**.
 - To exit the menu, press **SYSTEM**.

Note

- See the explanations of the above options in the following pages.

[Disc Lock]

Set play restriction for specific discs. Before you start, place the disc in the disc compartment (maximum 40 discs can be locked).

- **[Lock]** – Restrict access to the current disc. You need to enter a password to unlock and play the disc.
- **[Unlock]** – Play all discs.

Tip

- To set or change the password, go to **[Preference Setup] > [Password]**.

[OSD Language]

Select the preferred language for on-screen display.

This apparatus supports Philips EasyLink, which uses the HDMI CEC (Consumer Electronics Control) protocol. EasyLink-compliant devices that are connected through HDMI connectors can be controlled by a single remote control.



Note

- Philips does not guarantee 100% interoperability with all HDMI CEC devices.

[EasyLink]

- [Auto Wakeup TV]** - Turn on or off one touch play.
- [System Standby]** - Turn on or off one touch power-off. You can use the remote control of this apparatus to turn the apparatus and all connected HDMI devices to standby mode.
- [System Audio Control]** - Turn on or off one touch audio control.

[Screen Saver]

The screen saver protects the TV screen damage due to prolonged exposure to a static image.

- [On]** – Enable the screen saver.
- [Off]** – Disable the screen saver.

[DivX(R) VOD Code]

Display the DivX® registration code.



Tip

- Enter this DivX registration code when you rent or purchase video from www.divx.com/vod. The DivX videos rented or purchased through the DivX® VOD (Video On Demand) service can be played only on the device to which it is registered.

Audio setup

- 1 Press **SYSTEM**.
- 2 Press **▼** to select **[Audio Setup]**, and then press **▶▶**.
- 3 Select an option and then press **OK**.
- 4 Select a setting and then press **OK**.
 - To return to the previous menu, press **◀◀**.
 - To exit the menu, press **SYSTEM**.



Note

- See the explanations of the above options in the following pages.

[HDMI Audio]

When you connect this apparatus and TV with an HDMI cable, select the audio output setting for this connection.

- [On]** – the sound is output through both your TV and this apparatus. If the audio format on the disc is not supported, it is downmixed to two-channel sound (Linear-PCM).
- [Off]** – disable audio output from the TV. The sound is only output through this apparatus.

[Night Mode]

Make loud sound level softer and soft sound level louder so that you can watch the DVD movies at a low volume, without disturbing others.

- [Off]** – enjoy surround sound with its full dynamic range.
- [On]** – enjoy quiet viewing at night (DVDs only).

Video setup

- 1 Press **SYSTEM**.
- 2 Press **▼** to select **[Video Setup]**, and then press **▶▶**.
- 3 Select an option and then press **OK**.
- 4 Select a setting and then press **OK**.
 - To return to the previous menu, press **◀◀**.
 - To exit the menu, press **SYSTEM**.



Note

- See the explanations of the above options in the following pages.

[TV Type]

Change this setting if the video does not appear correctly. By default, this setting matches the most common setting for TVs in your country.

- **[PAL]** – For TV with PAL color system.
- **[NTSC]** – For TV with NTSC color system.
- **[Multi]** – For TV that is compatible with both PAL and NTSC.

[TV Display]

The TV format determines the aspect ratio of display according to the type of TV you have connected.



- **[4:3 Pan Scan]** – For 4:3 screen TV: full-height display with the trimmed sides.
- **[4:3 Letter Box]** – For 4:3 screen TV: wide-screen display with black bars on the top and bottom of the screen.
- **[16:9 Wide Screen]** – For wide-screen TV: display ratio 16:9.

[Progressive]

Turn on or off progressive scan mode.

[Picture Settings]

Select a predefined set of picture color settings or customize your personal setting.

- **[Standard]** – original color setting.
- **[Bright]** – vibrant color setting.
- **[Soft]** – warm color setting.
- **[Personal]** – customize the color setting. Adjust the level of brightness, contrast, sharpness/tint and color saturation.

[HDMI Video] – Select the HDMI video output resolution that is compatible with your TV display capability.

Option	Description
[Auto]	Detect and select the best supported video resolution automatically.
[480p], [576p], [720p], [1080i], [1080p]	Select a video resolution that is best supported by your TV. See your TV manual for details.


[Closed Caption]

Turn off or on display captions.

- **[On]** – show the sound effects in subtitles. Applicable only to discs with Closed Caption information included and the TV that supports this feature.
- **[Off]** – turn off closed caption.

Preferences

- 1 Press **SYSTEM**.
- 2 Press **▼** to select **[Preference Setup]**, and then press **▶▶**.
- 3 Select an option and then press **OK**.
- 4 Select a setting and then press **OK**.
 - To return to the previous menu, press **◀◀**.
 - To exit the menu, press **SYSTEM**.

 **Note**

- See the explanations of the above options in the following pages.

[Audio]

Select the preferred audio language for disc play.

[Subtitle]

Select the preferred subtitle language for disc play.

[Disc Menu]

Select the preferred disc menu language.



Note

- If the language you have set is not available on the disc, the disc uses its own default language.
- For some discs, the subtitle/audio language can only be changed from the disc menu.
- To select the languages that are not listed in the menu, select **[Others]**. Then check the Language Code list at the back of this user manual and enter the respective 4-digit language code.

[Parental]

Restricts access to discs that are unsuitable for children. These types of discs must be recorded with ratings.

- 1) Press **OK**.
- 2) Select a rating level, then press **OK**.
- 3) Press the numeric keys to enter the password.



Note

- Rated discs above the level you set in **[Parental]** require a password to be played.
- The ratings are country-dependent. To allow all discs to play, select **'8'**.
- Some discs have ratings printed on them but are not recorded with ratings. This function has no effect on such discs.



Tip

- You can set or change the password (see **[Preference Setup] > [Password]**).

[PBC]

Turns on or off the content menu of VCDs/SVCDs with PBC (playback control) feature.

- **[On]** - display index menu when you load a disc for play.
- **[Off]** - skip the menu and start play from the first title.

[MP3/JPEG Nav]

Select to display the folders or display all the files.

- **[With Menu]** – display the folders of MP3/WMA files.
- **[Without Menu]** – display all the files.

[Password]

Set or change the password for locked discs and play restricted DVDs.

- 1) Press the numeric keys to enter '0000' or your last set password at **[Old Password]** field.
- 2) Enter the new password at **[New Password]** field.
- 3) Enter the new password again at **[Confirm PWD]** field.
- 4) Press **OK** to exit the menu.



Note

- If you forget the password, enter '0000' before you set a new password.

[DivX Subtitle]

Select a character set that supports the DivX subtitle.

[Standard] English, Irish, Danish, Estonian, Finnish, French, German, Italian, Portuguese, Luxembourgish, Norwegian (Bokmål and Nynorsk), Spanish, Swedish, Turkish

[Central Europe] Polish, Czech, Slovak, Albanian, Hungarian, Slovene, Croatian, Serbian (Latin script), Romanian

[Cyrillic] Belarusian, Bulgarian, Ukrainian, Macedonian, Russian, Serbian

[Greek] Greek

[Hebrew] Hebrew



Note

- Ensure that the subtitle file has the exact same file name as the movie file. If for example the file name of the movie is 'Movie.avi', then you will need to name the text file 'Movie.sub' or 'Movie.srt'.

9 Other features

Set the alarm timer

This unit can be used as an alarm clock. The DISC, TUNER or USB is activated to play at a preset time.

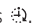



Note

- Ensure that you have set the clock correctly.



- 1 In standby mode, press and hold **SLEEP/TIMER**.
↳ The hour digits are displayed and begin to blink.
- 2 Turn **VOLUME+/-** or press **VOLUME+/-** on the remote control to set the hour.
- 3 Press **SLEEP/TIMER** to confirm.
↳ The minute digits are displayed and begin to blink.
- 4 Turn **VOLUME+/-** or press **VOLUME+/-** on the remote control to set the minute.
- 5 Press **SLEEP/TIMER** to confirm.
↳ [OFF] (OFF) begins to blink.
- 6 Turn **VOLUME+/-** or press **VOLUME+/-** on the remote control to select [ON] (ON).
- 7 Press **SLEEP/TIMER** to confirm.
↳ The timer is set and activated.

To deactivate the timer

- Select [OFF] (off) in step 6.
- If timer is activated, the display shows .
- If timer is deactivated,  disappears on the display.

Set the sleep timer

This apparatus can switch to standby automatically after a set period of time.

- 1 When the apparatus is turned on, press **SLEEP/TIMER** repeatedly to select a set period of time (in minutes).
↳ When sleep timer is activated, the display shows .
- 2 Press **SLEEP/TIMER** repeatedly until [--] is displayed.
↳ When sleep timer is deactivated,  disappears on the display.

Listen to an audio device

You can listen to an audio device through this apparatus.

- 1 Connect a 3.5mm audio cable (not supplied) from the **AUX** socket to the audio output socket audio device.
- 2 Press **AUX**.
- 3 Start to play the device (see the device user manual).

10 Product information



Note

- Product information is subject to change without prior notice.

Specifications

Amplifier

Rated Output Power	2X75W RMS
Frequency Response	40Hz-20000Hz, ± 3 dB
Signal to Noise Ratio	>65dB
Aux Input	0.5 V RMS 20kohm

Disc

Laser Type	Semiconductor
Disc Diameter	12cm/8cm
Video Decoding	MPEG-1 / MPEG-2 / DivX
Video DAC	12Bits
Signal System	PAL / NTSC
Video Format	4:3 / 16:9
Video S/N	>48dB
Audio DAC	24Bits / 96kHz
Total Harmonic Distortion	<1% (1 kHz)
Frequency Response	4Hz - 20kHz (44.1kHz) 4Hz - 22kHz (48kHz) 4Hz - 24kHz (96kHz)
S/N Ratio	>65dBA

Tuner (FM)

Tuning Range	87.5 - 108MHz
Tuning grid	50KHz
Sensitivity - Mono, 26dB S/N Ratio	<22 dBf
Sensitivity - Stereo, 46dB S/N Ratio	<43 dBf
Search Selectivity	>28dBf
Total Harmonic Distortion	<2%
Signal to Noise Ratio	>55dB

Speakers

Speaker Impedance	4ohm
Speaker Driver	5.25" woofer + 1" tweeter
Sensitivity	>80dB/m/W \pm 4dB/m/W

General information

AC power	220-230V, 50Hz
Operation Power Consumption	60W
Eco Standby Power Consumption	<1W
Composite Video Output	1.0Vp-p, 75ohm
Coaxial Output	0.5Vpp \pm 1Vpp 75ohm
Headphone output	2X15mW 32ohm
USB Direct	Version 2.0
Dimensions	
- Main Unit (W x H x D)	250X185X280mm
- Speaker Box (W x H x D)	205X330X240mm
Weight	
- With Packing	22.5 kg
- Main Unit	6.8 kg
- Speaker Box	2 x 7 kg

Supported disc formats

- Digital Video Discs (DVDs)
- Video CDs (VCDs)
- Super Video CDs (SVCDs)
- Digital Video Discs + Rewritable (DVD+RW)
- Compact Discs (CDs)
- Picture (Kodak, JPEG) files on CDR(W)
- DivX(R) disc on CD-R(W):
- DivX 3.11, 4.x and 5.x
- WMA

Supported MP3-CD formats:

- ISO 9660
- Max. title/album name: 12 characters
- Max. title number plus album: 255.
- Max. nested directory: 8 levels.
- Max. album number: 32.
- Max. MP3 track number: 999.
- Supported sampling frequencies for MP3 disc: 32 kHz, 44.1 kHz, 48 kHz.
- Supported Bit-rates of MP3 disc are: 32, 64, 96, 128, 192, 256 (kbps).
- The following formats are not supported:
 - Files like *.VMA, *.AAC, *.DLF, *.M3U,
 - *.PLS, *.WAV
 - Non-English Album/Title name
 - Discs recorded in Joliet format
 - MP3 Pro and MP3 with ID3 tag

- Directory nesting up to a maximum of 8 levels
- Number of albums/ folders: maximum 99
- Number of tracks/titles: maximum 999
- ID3 tag v2.0 or later
- File name in Unicode UTF8 (maximum length: 128 bytes)

Unsupported formats:

- Empty albums: an empty album is an album that does not contain MP3/WMA files, and is not be shown in the display.
- Unsupported file formats are skipped. For example, Word documents (.doc) or MP3 files with extension .dlf are ignored and not played.
- AAC, WAV, PCM audio files
- DRM protected WMA files (.wav, .m4a, .m4p, .mp4, .aac)
- WMA files in Lossless format

USB playability information

Compatible USB devices:

- USB flash memory (USB 2.0 or USB1.1)
- USB flash players (USB 2.0 or USB1.1)
- memory cards (requires an additional card reader to work with this apparatus)

Supported formats:

- USB or memory file format FAT12, FAT16, FAT32 (sector size: 512 bytes)
- MP3 bit rate (data rate): 32-320 Kbps and variable bit rate
- WMA v9 or earlier

11 Troubleshooting

Caution

- Never remove the casing of this apparatus.

To keep the warranty valid, never try to repair the system yourself.

If you encounter problems when using this apparatus, check the following points before requesting service. If the problem remains unsolved, go to the Philips web site (www.Philips.com/support). When you contact Philips, ensure that your apparatus is nearby and the model number and serial number are available.

No power

- Ensure that the AC cord of the apparatus is connected properly.
- Ensure that there is power at the AC outlet.
- As a power-saving feature, the system switches off automatically 15 minutes after track play reaches the end and no control is operated.

No disc detected

- Insert a disc.
- Check if the disc is inserted upside down.
- Wait until the moisture condensation at the lens has cleared.
- Replace or clean the disc.
- Use a finalized CD or correct format disc.

No picture

- Check the video connection.
- Turn on the TV to the correct Video-In channel.
- Progressive scan is activated but the TV does not support progressive scan.

Black and white or distorted picture

- The disc does not match the TV color system standard (PAL/NTSC).
- Sometimes a slight picture distortion may appear. This is not a malfunction.
- Clean the disc.

- A distorted picture may appear during progressive scan setup.

The aspect ratio of the TV screen cannot be changed even though you have set the TV display format.

- The aspect ratio is fixed on the loaded DVD disc.
- The aspect ratio may not be changed for some TV systems.

No sound or poor sound

- Adjust the volume.
- Disconnect the headphone.
- Ensure the wireless subwoofer is connected.

Remote control does not work

- Before pressing any function button, first select the correct source with the remote control instead of the main unit.
- Reduce the distance between the remote control and the apparatus.
- Insert the battery with its polarities (+/- signs) aligned as indicated.
- Replace the battery.
- Aim the remote control directly at the sensor on the front of the apparatus.

Disc does not play

- Insert a readable disc with the label side facing you.
- Check the disc type, color system and regional code. Check for any scratches or smudges on the disc.
- Press **SYSTEM** to exit the system setup menu.
- Disable the password for parental control or change the rating level.
- Moisture has condensed inside the system. Remove the disc and leave the system turned on for about an hour. Disconnect and reconnect the AC power plug, and then turn on the system again.
- As a power-saving feature, the system turns off automatically 15 minutes after disc play reaches the end and no control is operated.

Poor radio reception

- Increase the distance between the apparatus and your TV or VCR.
- Fully extend the FM antenna.
- Connect an outdoor FM antenna instead.

Unable to select Progressive Scan

- Ensure the video output mode is set to [YUV].

Audio or subtitle languages cannot be set

- The disc is not recorded with sound or subtitles in multiple languages.
- The audio or subtitle language setting is prohibited on the disc.

USB device or SD/MMC card not supported

- The USB device or SD/MMC card is incompatible with the apparatus. Try another one.

Cannot display some files in USB device or SD/MMC card

- The number of folders or files in the USB device or SD/MMC card has exceeded a certain limit. This phenomenon is not a malfunction.
- The formats of these files are not supported.

Timer does not work

- Set the clock correctly.
- Switch on the timer.

Clock/timer setting erased

- Power has been interrupted or the power cord has been disconnected.
- Reset the clock/timer.

12 Glossary

A

Analog audio

Sound that has not been turned into numbers. Analog sound is available when you use the AUDIO LEFT/RIGHT. These red and white jacks send audio through two channels, the left and right.

Aspect ratio

Aspect ratio refers to the length to height ratio of TV screens. The ratio of a standard TV is 4:3, while the ratio of a high-definition or wide TV is 16:9. The letter box allows you to enjoy a picture with a wider perspective on a standard 4:3 screen.

AUDIO OUT sockets

Red and white sockets that send audio to another system (TV, Stereo, etc).

B

Bit rate

Bit rate is the number of bits that are conveyed or processed per unit of time. The bit rate is usually measured in some multiple of bits per second (kilobits per second: kbps). The term bit rate is a synonym for data transfer rate (or simply data rate).

C

Chapter

Sections of a picture or a music piece on a DVD that are smaller than titles. A title is composed of several chapters. Each chapter is assigned a chapter number that enables you to locate a specific chapter.

D

Digital Audio

Digital Audio is a sound signal that has been converted into numerical values. Digital sound can be transmitted through multiple channels. Analog sound can only be transmitted through two channels.

Disc menu

A screen display that allows election of images, sounds, subtitles, multi-angles, etc., recorded on a DVD.

DivX®

The DivX® codec is a patent-pending, MPEG-4 based video compression technology developed by DivX®, Inc. It can shrink the file size of digital video and still maintain the high visual quality.

Dolby Digital

A surround sound system developed by Dolby Laboratories that contains up to six channels of digital audio (front left and right, surround left and right, center and subwoofer.)

H

HDMI

High-Definition Multimedia Interface is a high-speed digital interface that can transmit uncompressed high definition video and digital multichannel audio. It delivers high quality picture and sound quality, completely free from noise. HDMI is fully backward-compatible with DVI.

As required by the HDMI standard, connecting to HDMI or DVI products without HDCP (High-bandwidth Digital Content Protection) will result in no Video or Audio output.

J

JPEG

A very common digital still picture format. A still-picture data compression system proposed by the Joint Photographic Expert Group, which features small decrease in image quality in spite of its high compression ratio. Files are recognized by their file extension 'jpg' or 'jpeg.'

M

MP3

A file format with a sound data compression system. MP3 is the abbreviation of Motion Picture Experts Group 1 (or MPEG-1) Audio Layer 3. With the MP3 format, one CD-R or CD-RW can contain about 10 times more data than a regular CD.

Multichannel

Usually DVD is specified to have each sound track constitute one sound field. Multichannel refers to a structure of sound tracks having three or more channels.

P

Parental control

A function of the DVD to limit playback of the disc by the age of the users according to the limitation level in each country. The limitation varies from disc to disc; when it is activated, playback will be prohibited if the software's level is higher than the user-set level.

PBC

Playback Control. A system where you navigate through a Video CD/Super VCD with on-screen menus that are recorded onto the disc. You can enjoy interactive playback and search.

PCM

Pulse Code Modulation. A digital audio encoding system.

R

Region code

A system that allows discs to be played only in the region designated. This unit only plays discs that have compatible region codes. You can find the region code of your unit on the product label. Some discs are compatible with more than one region (or ALL regions.)

S

S-Video

An analog video connection. It is capable of transmitting clear picture quality by sending separate signals for luminance and colour to the connected device. You can use S-Video only if your TV has an S-Video In socket.

Surround

A system that creates realistic, three-dimensional sound fields. It is usually achieved with multiple speakers that are arranged around the listener.

T

Title

On commercial DVDs, this is the longest section of a movie or music feature on DVD. Each title is assigned a title number, so that you can locate the title you want.

When you record programs, they are stored as titles. Depending on the recording settings, recorded titles may automatically contain several chapters.

V

VIDEO OUT socket

Yellow socket that sends the DVD picture video to a TV.

