



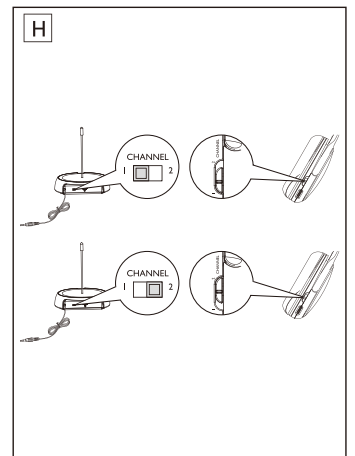
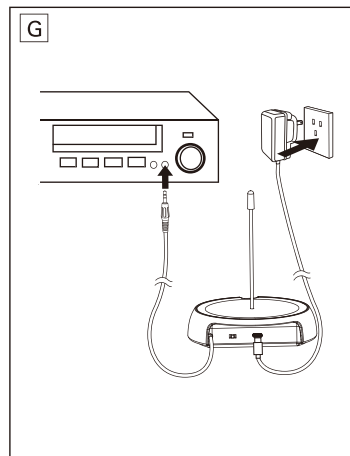
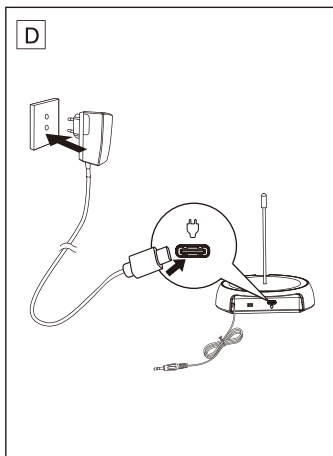
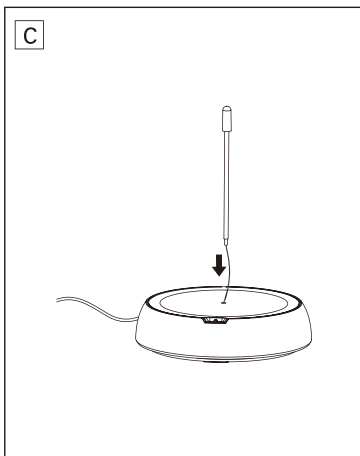
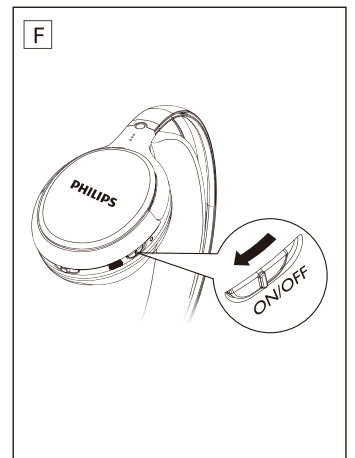
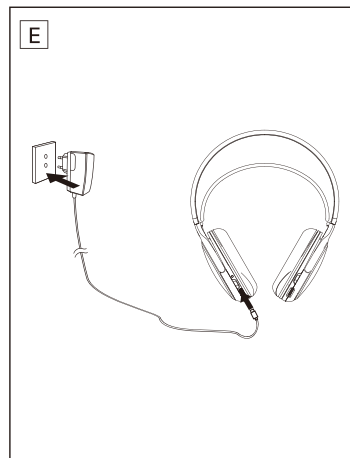
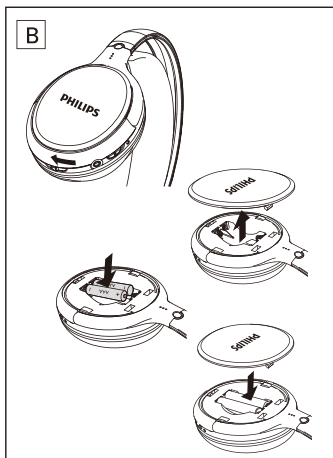
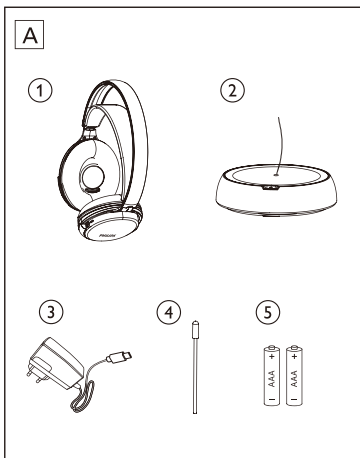
EN User manual

Philips and the Philips Shield Emblem are registered trademarks of Koninklijke Philips N.V. and are used under license. This product has been manufactured by and is sold under the responsibility of MMD Hong Kong Holding Limited or one of its affiliates, and MMD Hong Kong Holding Limited is the warrantor in relation to this product.

SHC5200_79 V2.0



PHILIPS



EN			
What's in the box (Fig. A)			
1) Headphones	2) Transmitter	3) AC/DC adaptor	4) Antenna tube
5) 2 x AAA rechargeable shortened sleeve NiMH batteries (SBC HB700S)			

Get started

Note

- Before using the headphones for the first time, charge the supplied batteries for at least 12 hours.
- **Only use Philips rechargeable shortened sleeve NiMH batteries with your headphones. Other types of rechargeable batteries cannot be charged with this system.**
- **AAA alkaline batteries can be used to operate the headphones, but cannot be charged with this system.**
- If the volume of the audio source is insufficient, the transmitter automatically turns off.

- 1 Install/Replace supplied batteries (Fig. B).
- 2 Install the antenna tube into the transmitter (Fig. C).
- 3 Power on the transmitter (Fig. D), Red LED on.
 - ↳ Green LED is on when audio source is connected.
 - ↳ Green LED blinks if no audio source is connected.
 - ↳ Green LED and Red LED are off if no power.
- 4 To charge the headphones, connect the USB Type C charging cable with the headphones (Fig. E).
 - ↳ Headphones: Green LED on during charging.
- 5 Power on the headphones and Red LED is on (Fig. F).
- 6 Connect the audio device with the transmitter (Fig. G).
 - ↳ Green LED is on when audio source is connected.
- 7 Keep CHANNEL in transmitter the same as in headphones (Fig. H).

Tip

If there is interference, tune the transmitter and the headphones to the same channel (Fig. H).

3 Product Information

Version / Region	Adaptor type number	Input voltage / frequency	Output voltage	Carrier / Reception frequency	
				Channel 1	Channel 2
/79 AUS/ NZ	YLJXA-A050055	100-240V / 50/60Hz	5V 0.55A	924.25MHz	925.25MHz

For further product support, please visit www.philips.com/support

English

1 Important Hearing safety

! Caution



- To prevent possible hearing damage, do not listen at high volume levels for long periods. Set the volume to a safe level. The louder the volume, the shorter is the safe listening time.

Be sure to observe the following guidelines when using your headphones.

- Listen at reasonable volumes for reasonable periods of time.
- Be careful not to adjust the volume continuously upwards as your hearing adapts.
- Do not turn up the volume so high that you can't hear what's around you.
- You should use caution or temporarily discontinue use in potentially hazardous situations.
- Excessive sound pressure from earphones and headphones can cause hearing loss.

Electric-, Magnetic- and Electromagnetic Fields (EMF)

This product complies with all applicable standards and regulations regarding exposure to electromagnetic fields.

General information

- **To prevent fire or shock hazard:** Always keep this product dry. Do not expose it to excessive heat by heating equipment or direct sunlight.
- No naked flame sources, such as lighted candles, should be placed on the apparatus.
- Do not allow your headset to be submerged in water.
- **To clean the product:** Use a slightly dampened chamois cloth. Do not use cleansing agents containing alcohol, spirits, ammonia or abrasives as they may harm the product.

- Do not disassemble the product.
- Do not operate or store the product in a place where temperature is below 0°C (32°F) or above 40°C (104°F) as this may shorten the battery life.
- This product shall not be exposed to dripping or splashing.
- The mains plug of AC/DC adaptor is used as the disconnect device, the disconnect device shall be readily operable.
- Use only the supplied batteries.
- Other types of rechargeable or alkaline batteries cannot be charged with this system.
- Batteries (battery pack or batteries installed) shall not be exposed to excessive heat such as sunshine, fire or the like.

2 Declaration of conformity

Hereby, TPV Europ B.V. declares that this product is in compliance with the essential requirements and other relevant provisions of Directive 2014/53/EU. You can find the Declaration of Conformity on www.p4c.philips.com.

3 Disposal of your old product and batteries



Your product is designed and manufactured with high quality materials and components, which can be recycled and reused.



This symbol on a product means that the product is covered by European Directive 2012/19/EU.



This symbol means that the product contains batteries covered by European Directive 2013/56/EU which cannot be disposed of with normal household waste.

Inform yourself about the local separate collection system for electrical and electronic products and batteries.

Follow local rules and never dispose of the product and batteries with normal household waste. Correct disposal of old products and batteries helps prevent negative consequences for the environment and human health.

PHILIPS

Warranty against Defects

In this warranty:

We or us means MMD Hong Kong Holding Limited ABN 531 651 059 75, and our contact details are set out at the end of this warranty;

You means the purchaser or the original end-user of the Goods;

Supplier means the authorised distributor or retailer of the Goods that sold you the Goods in Australia or New Zealand; and

Goods means the product or equipment which was accompanied by this warranty and purchased in Australia or New Zealand.

If you require assistance with the operation of the product, its features or specifications please call the Philips Consumer Care Centre on 1300 850 633 in Australia or 0800 639 953 in New Zealand.

Australia: Our Goods come with guarantees that cannot be excluded under the Australian Consumer Law. You are entitled to a replacement or refund for a major failure and for compensation for any other reasonably foreseeable loss or damage. You are also entitled to have the Goods repaired or replaced if the goods fail to be of acceptable quality and the failure does not amount to a major failure. This is not a complete statement of your legal rights as a consumer.

New Zealand: Our Goods come with guarantees that cannot be excluded under the Consumer Guarantees Act 1993. This guarantee applies in addition to the conditions and guarantees implied by that legislation.

Additional Warranty:

In addition to the rights and remedies that you have under the Australian Consumer Law, Consumer Guarantees Act of New Zealand or any other applicable law, we provide the following warranty against defects:

1. If, during the first **12 months** from their date of purchase from the Supplier (**Warranty Period**), the Goods prove defective by reason of improper workmanship or materials and none of your statutory rights or remedies apply, we **will** repair or **replace** the Goods without charge.
2. We do not have to repair or **replace** the Goods under this Additional Warranty if the Goods have been used for a commercial purpose; misused, improperly or inappropriately installed, operated or repaired; abused; damaged; or not maintained in accordance with the manufacturer's instructions.
3. Even when we do not have to repair or **replace** the Goods, we may decide to do so anyway. In some cases, we may decide to substitute the Goods with a similar alternative product of our choosing. **All** such decisions are at our absolute discretion.
4. **All** such repaired, replaced or substituted Goods continue to receive the benefit of this Additional Warranty for the time remaining on the original Warranty Period.
5. This Additional Warranty is limited to repair, replacement or substitution only. As far as the law permits, we **will** not be liable for any loss or damage caused to property or persons arising from any cause whatsoever.
6. In order to **claim** under this Additional Warranty you must telephone us on 1300 850 633 in Australia or 0800 639 953 in New Zealand within the Warranty Period. You will be asked for details of the Goods, a description of the defect and your personal details. Upon accepting your **claim**, we shall assist you with either returning the Goods to the Supplier for replacement or to the most convenient Philips Authorised Service Centre for your Goods to be repaired. In some case we may require that you return to the Goods to us (at the address below) for repair, replacement or substitution.
 - * **All** returned Goods must be accompanied by satisfactory proof of purchase which **clearly** indicates the name and address of the Supplier, the date and place of purchase and identifies product. It is best to provide a legible and unmodified receipt or sales invoice.
 - * You must bear any expense for return of the Goods or otherwise associated with making your **claim** under this Additional Warranty.
7. This warranty is **only** valid and enforceable in Australia and New Zealand.

Contact us or the place of purchase for further details.

Australia
Powermove Distribution Pty Ltd
28 The Gateway, Broadmeadows,
3047

Consumer Care: 03 9358 599
E-mail: support@powermove.com.au
Website: www.philips.com/support

New Zealand
Pudney and Lee 2017 Limited.
1D Quadrant Drive, Gracefield,
Lower Hutt, 5010, New Zealand

Consumer Care: +64 800 880 100
Email: willy@pudneyandlee.co.nz
Website: www.philips.com/support