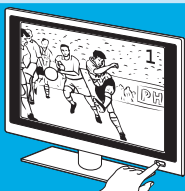


Quick Start Guide

Getting started in five easy steps.

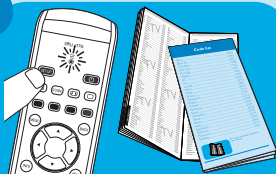
1



Switch on your TV.

Check if the TV responds to all key commands. If the TV does not respond, continue with step 2.

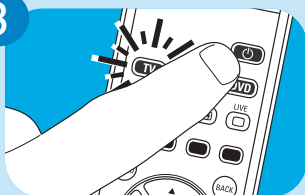
2



Press the SET UP key until the light flashes twice and then remains lit.

Look up and enter the 4-digit code for your brand of TV. See 'Code list'.

3



Press and hold the Standby key (⏻) until the TV switches off (standby). Then release the key immediately.

Note: the remote control will send multiple codes to the device trying to find the correct one.

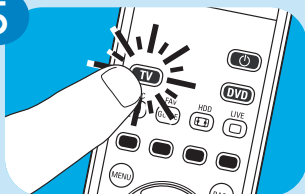
4



Switch on your TV and check if you can operate all functions on it with the remote control.

If a key does not function properly, keep it pressed until it works. Then release the key immediately.

5



Keep the SET UP key pressed for 5 seconds to exit setup mode and save settings.

Repeat above steps for all devices you wish to operate with the remote control.

Code list TV / DVD

Blue Sky	.0395	Philips	.2195
Carrefour	.0492	Pioneer	.2212
Denon	.0731	Samsung	.2448
First Line	.1008	Sagem	.2434
Grundig	.1162	Sanyo	.2462
Hitachi	.1251	Schneider	.2501
JVC	.1464	Sharp	.2550
LG	.1628	Sierra	.3549
Loewe	.1660	Sony	.2679
Metz	.1810	Supratech	.2789
Mivar	.1857	Technics	.2869
Nokia	.2017	Thomson	.2972
Panasonic	.2153	Toshiba	.3021

Code list STB - SRU 5130 only

Canal+	.0478
Humax	.1298
Nokia	.2017
Premiere	.3666
SKY	.2610



For more codes, see code list in user manual.