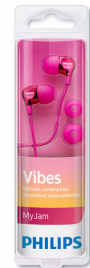




Philips
Headphones

8.6-mm drivers/closed-back
In-ear

SHE3700PK



Big beats, pumping bass

Compact design with vacuum metallised protection

Ultra small, big bass Philips Vibes in-ear headphones feature oval tube inserts for comfort and vacuum metallised coating for sleek looks with extra protection.

Revel in quality sound

- Big bass and clear sound through efficient drivers
- A perfect in-ear seal blocks out external noise

Listen for longer

- Oval sound tube insert provides an ergonomic comfort fit
- 3 interchangeable rubber ear caps offer an optimal fit
- Shiny, colourful coating looks sleek and also protects

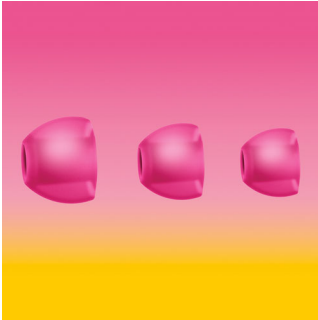
Always ready to go

- Reinforced cable relief enhances durability and connectivity

PHILIPS

Highlights

3 sizes of ear caps



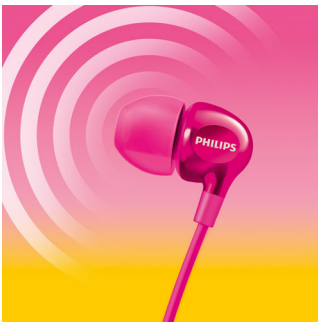
Ear caps come in a choice of 3 sizes - small, medium and large - for a personalised and perfect fit

Colourful shiny coating



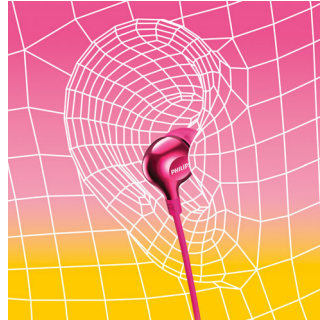
A high quality, glossy and colourful coating creates a sleek look while adding an extra protective surface.

Efficient drivers



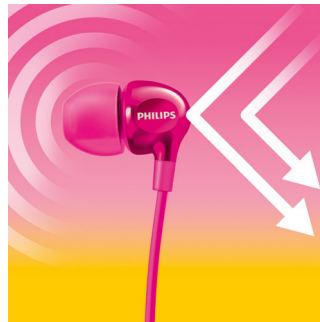
Philips Vibes in-ear headphones house efficient drivers inside a compact design. They fit perfectly while pumping out clear sound and booming bass.

Oval sound tube



An oval sound tube insert provides ergonomic comfort to fit the true shape of the ear.

Perfect in-ear fit



Ultra small earphones fit perfectly inside the ear, creating a seal that blocks out external noise.

Reinforced cable relief

To extend the life of your headphones, a soft rubber relief between them and the cable protects the connection from damage through repeated bending.

Specifications

Accessories

- Eartips: 3 sizes S, M, L

Design

- Colour: Pink

Sound

- Acoustic system: Closed
- Diaphragm: PET
- Voice coil: copper
- Frequency response: 11 - 22,000 Hz
- Impedance: 16 ohm
- Maximum power input: 20 mW
- Sensitivity: 105 dB
- Speaker diameter: 8.6 mm
- Type: Dynamic

Connectivity

- Cable Connection: two-parallel, symmetric
- Cable length: 1.2 m
- Connector: 3.5 mm
- Finishing of connector: chrome-plated
- Type of cable: copper

Inner Carton

- Gross weight: 0.125 kg
- GTIN: 2 69 25970 70910 5
- Inner carton (L x W x H): 18.1 x 8.1 x 6 cm
- Net weight: 0.036 kg
- Number of consumer packages: 3
- Tare weight: 0.089 kg

Outer Carton

- Gross weight: 1.127 kg
- GTIN: 1 69 25970 70910 8
- Outer carton (L x W x H): 37.5 x 17.9 x 13.9 cm
- Net weight: 0.288 kg
- Number of consumer packages: 24
- Tare weight: 0.839 kg

Packaging dimensions

- Packaging type: Blister
- Type of shelf placement: Both
- Packaging dimensions (W x H x D): 5 x 17.3 x 2.7 cm
- EAN: 69 25970 70910 1
- Gross weight: 0.026 kg
- Net weight: 0.012 kg
- Number of products included: 1
- Tare weight: 0.014 kg



Issue date 2017-09-04

Version: 4.1.4

12 NC: 8670 001 34688
EAN: 69 25970 70910 1

© 2017 Koninklijke Philips N.V.
All Rights reserved.

Specifications are subject to change without notice.
Trademarks are the property of Koninklijke Philips N.V.
or their respective owners.

www.philips.com