

Register your product and get support at  
[www.philips.com/welcome](http://www.philips.com/welcome)

HTS5120



---

EN	User manual
ES	Manual del usuario
PT-BR	Manual do Usuário

---

**PHILIPS**



# Contents

<b>1</b>	<b>Notice</b>	<b>2</b>
	Copyright	2
	About Progressive Scan	2
	Trademarks	2
<b>2</b>	<b>Important</b>	<b>3</b>
	Safety	3
	Product care	4
	Disposal of your old product and batteries	4
<b>3</b>	<b>Your home theater</b>	<b>5</b>
	Main unit	5
	Remote control	5
<b>4</b>	<b>Connect your home theater</b>	<b>7</b>
	Connectors	7
	Connect to the TV	7
	Connect audio from TV or other devices	8
	Connect a Philips Dock for iPod/iPhone	9
<b>5</b>	<b>Use your home theater</b>	<b>10</b>
	Before you start	10
	Choose your sound	10
	Play a disc	10
	Play from a USB storage device	11
	More play features for disc or USB	12
	Play from radio	12
	Play audio from TV or other devices	13
	Play from an MP3 player	13
	Play from an iPod or iPhone	13
	Use Philips EasyLink	14
<b>6</b>	<b>Change settings</b>	<b>15</b>
	Access the setup menu	15
	Change general settings	15
	Change audio settings	15
	Change video settings	16
	Change preference settings	16
<b>7</b>	<b>Update software</b>	<b>17</b>
	Check software version	17
	Update software from a CD-R or USB	17

<b>8</b>	<b>Product specifications</b>	<b>17</b>
<b>9</b>	<b>Troubleshooting</b>	<b>19</b>
<b>10</b>	<b>Index</b>	<b>20</b>

# 1 Notice

## Copyright



Be responsible  
Respect copyrights

This item incorporates copy protection technology that is protected by U.S. patents and other intellectual property rights of Rovi Corporation. Reverse engineering and disassembly are prohibited.

## About Progressive Scan

Consumers should note that not all high definition television sets are fully compatible with this product and may cause artifacts to be displayed in the picture. In case of 525 or 625 progressive scan picture problems, it is recommended that the user switch the connection to the 'standard definition' output. If there are questions regarding our TV set compatibility with this model 525p and 625p DVD player, please contact our customer service center.

## Trademarks



DivX® and DivX Ultra® are registered trademarks of DivX, Inc. and are used under license.

DivX Ultra® Certified to play DivX® video with advanced features and premium content.

ABOUT DIVX VIDEO: DivX® is a digital video format created by DivX, Inc. This is an official DivX Certified device that plays DivX video. Visit [www.divx.com](http://www.divx.com) for more information and software tools to convert your files into DivX video.

ABOUT DIVX VIDEO-ON-DEMAND: This DivX Certified® device must be registered in order to play DivX Video-on-Demand (VOD) content. To generate the registration code, locate the DivX VOD section in your device setup menu. Go to [vod.divx.com](http://vod.divx.com) with this code to complete the registration process and learn more about DivX VOD.



Manufactured under license from Dolby Laboratories. Dolby, Pro Logic and the double-D symbol are trademarks of Dolby Laboratories.



'DVD Video' is a trademark of DVD Format/Logo Licensing Corporation.



HDMI, and HDMI logo and High-Definition Multimedia Interface are trademarks or registered trademarks of HDMI licensing LLC.



The USB-IF Logos are trademarks of Universal Serial Bus Implementers Forum, inc.



Windows Media and the Windows logo are trademarks, or registered trademarks of Microsoft Corporation in the United States and/or other countries.

Manufactured under license under U.S. Patent #s: 5,451,942; 5,956,674; 5,974,380; 5,978,762; 6,487,535 & other U.S. and worldwide patents issued & pending. DTS and the Symbol are registered trademarks & DTS Digital Surround and the DTS logos are trademarks of DTS, Inc. Product includes software. © DTS, Inc. All Rights Reserved.

Philips  
Modelo: HTS5120



0847-10-6014



(01)07894401013553

“Este equipamento opera em caráter secundário, isto é, não tem direito a proteção contra interferência prejudicial, mesmo de estações do mesmo tipo, e não pode causar interferência a sistemas operando em caráter primário.”



## 2 Important

Read and understand all instructions before you use your home theater. If damage is caused by failure to follow instructions, the warranty does not apply.

### Safety

#### Risk of electric shock or fire!

- Never expose the product and accessories to rain or water. Never place liquid containers, such as vases, near the product. If liquids are spilt on or into the product, disconnect it from the power outlet immediately. Contact Philips Consumer Care to have the product checked before use.
- Never place the product and accessories near naked flames or other heat sources, including direct sunlight.
- Never insert objects into the ventilation slots or other openings on the product.
- Where the mains plug or an appliance coupler is used as the disconnect device, the disconnect device shall remain readily operable.
- Disconnect the product from the power outlet before lightning storms.
- When you disconnect the power cord, always pull the plug, never the cable.

#### Risk of short circuit or fire!

- Before you connect the product to the power outlet, ensure that the power voltage matches the value printed on the back or bottom of the product. Never connect the product to the power outlet if the voltage is different.

#### Risk of injury or damage to the home theater!

- For wall-mountable products, use only the supplied wall mount bracket. Secure the wall mount to a wall that can support the combined weight of the product and the wall mount. Koninklijke Philips Electronics N.V. bears no responsibility for improper wall mounting that results in accident, injury or damage.
- For speakers with stands, use only the supplied stands. Secure the stands to the speakers tightly. Place the assembled stands on flat, level surfaces that can support the combined weight of the speaker and stand.

- Never place the product or any objects on power cords or on other electrical equipment.
- If the product is transported in temperatures below 5°C, unpack the product and wait until its temperature matches room temperature before connecting it to the power outlet.
- Visible and invisible laser radiation when open. Avoid exposure to beam.
- Do not touch the disc optical lens inside the disc compartment.

#### **Risk of overheating!**

- Never install this product in a confined space. Always leave a space of at least four inches around the product for ventilation. Ensure curtains or other objects never cover the ventilation slots on the product.

#### **Risk of contamination!**

- Do not mix batteries (old and new or carbon and alkaline, etc.).
- Remove batteries if they are exhausted or if the remote control is not to be used for a long time.
- Batteries contain chemical substances, they should be disposed of properly.

---

## **Product care**

- Do not insert any objects other than discs into the disc compartment.
- Do not insert warped or cracked discs into the disc compartment.
- Remove discs from the disc compartment if you are not using the product for an extended period of time.
- Only use microfiber cloth to clean the product.

---

## **Disposal of your old product and batteries**



Your product is designed and manufactured with high quality materials and components, which can be recycled and reused.



When this crossed-out wheeled bin symbol is attached to a product it means that the product is covered by the European Directive 2002/96/EC. Please inform yourself about the local separate collection system for electrical and electronic products.

Please act according to your local rules and do not dispose of your old products with your normal household waste.

Correct disposal of your old product helps to prevent potential negative consequences for the environment and human health.



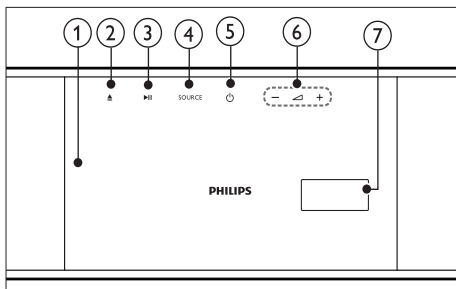
Your product contains batteries covered by the European Directive 2006/66/EC, which cannot be disposed with normal household waste.

Please inform yourself about the local rules on separate collection of batteries because correct disposal helps to prevent negative consequences for the environmental and human health.

### 3 Your home theater

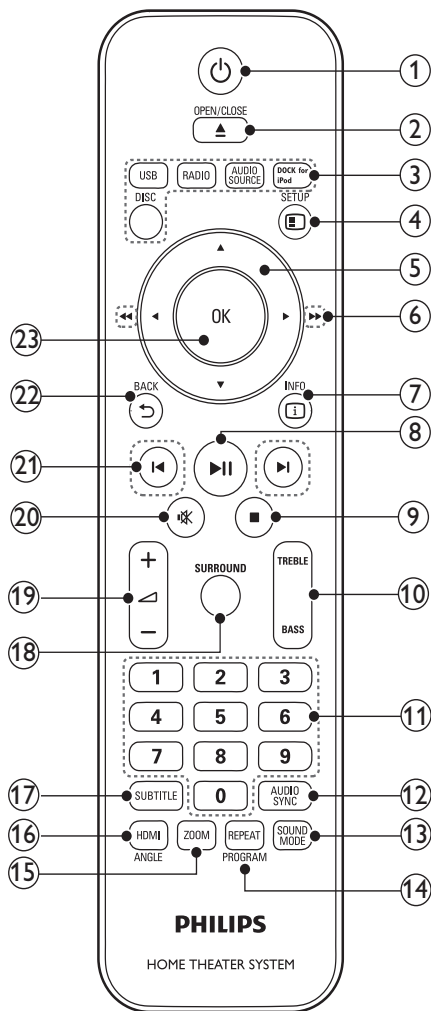
Congratulations on your purchase, and welcome to Philips! To fully benefit from the support that Philips offers, register your home theater at [www.philips.com/welcome](http://www.philips.com/welcome).

#### Main unit



- ① Disc compartment
- ② ▲ (Open/Close)  
Opens or closes the disc compartment.
- ③ ►|| (Play/Pause)  
Starts, pauses or resumes disc play.
- ④ SOURCE  
Selects an audio/video source for the home theater.
- ⑤ ⏻ (Standby-On)  
Switches the home theater on or to standby.
- ⑥ ▲/▼ (Volume)  
Increases or decreases volume.
- ⑦ Display panel

#### Remote control



- ① ⏻ (Standby-On)
  - Switches the home theater on or to standby.
  - When EasyLink is enabled, press and hold for at least three seconds to switch all connected HDMI CEC compliant devices to standby.
- ② ▲ OPEN/CLOSE  
Opens or closes the disc compartment.

- ③ **Audio Source**
- **DISC:** Switches to disc source.
  - **USB:** Switches to USB storage device.
  - **RADIO:** Switches to FM radio.
  - **AUDIO SOURCE:** Selects an audio input source.
  - **DOCK for iPod:** Switches to Philips Dock for iPod/iPhone.
- ④ **⏏ SETUP**  
Accesses or exits the setup menu.
- ⑤ **⏮⏭⏪⏩ (Navigation buttons)**
- Navigate menus.
  - In video mode, press left or right to fast backward or fast forward.
  - In radio mode, press left or right to search a radio station; press up or down to fine tune a radio frequency.
- ⑥ **⏮ (Fast Backward) ⏭ (Fast Forward)**  
Fast backwards or fast forwards. Press repeatedly to change the search speed.
- ⑦ **ℹ INFO**  
Displays information about what is playing.
- ⑧ **⏸ (Play/Pause)**  
Starts, pauses or resumes disc play.
- ⑨ **■ (Stop)**
- Stops disc play.
  - In radio mode, erases the current preset radio station.
- ⑩ **TREBLE / BASS**  
Changes treble or bass. Use with **+/-**.
- ⑪ **Numeric buttons**  
Selects an item to play.
- ⑫ **AUDIO SYNC**
- Selects an audio language or channel.
  - Press and hold to synchronize audio with video. Use with **+/-**.
- ⑬ **SOUND MODE**  
Selects a predefined sound effect.
- ⑭ **REPEAT / PROGRAM**
- Selects a repeat or shuffle mode.
  - In radio mode, programs radio stations.
- ⑮ **ZOOM**  
Zooms into a video scene or picture.
- ⑯ **HDMI / ANGLE**
- Selects video resolution of HDMI output from the home theater.
  - Displays options for different camera angles.
- ⑰ **SUBTITLE**  
Selects subtitle language for video.
- ⑱ **SURROUND**  
Selects Dolby Virtual Speaker surround sound.
- ⑲ **⏴ +/-**  
Increases or decreases volume.
- ⑳ **🔇 (Mute)**  
Mutes or restores volume.
- ㉑ **⏮ / ⏭ (Previous/Next)**  
Skips to the previous or next track, chapter or file.
- ㉒ **⏮ BACK**  
Returns to a previous menu screen.
- ㉓ **OK**  
Confirms an entry or selection.



## 4 Connect your home theater

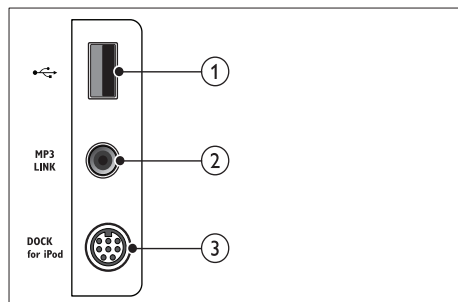
This section helps you connect your home theater to a TV and other devices. The basic connections of the home theater with its accessories are provided in the Quick Start. For a comprehensive interactive guide, see [www.connectivityguide.philips.com](http://www.connectivityguide.philips.com).

### Note

- Refer to the type plate at the back or bottom of the product for identification and supply ratings.
- Before you make or change any connections, ensure that all devices are disconnected from the power outlet.

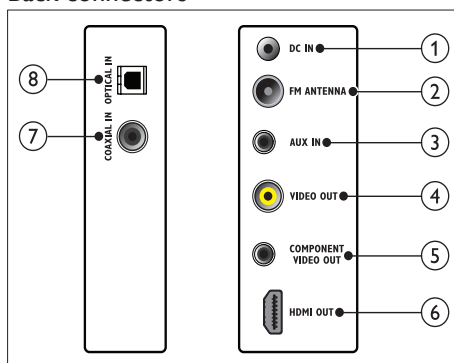
## Connectors

### Side connectors



- 1 USB**  
Audio, video or picture input from a USB storage device.
- 2 MP3 LINK**  
Audio input from an MP3 player.
- 3 DOCK for iPod**  
Connects to a Philips Dock for iPod/iPhone. (Model: PHILIPS DCK3060, sold separately)

### Back connectors



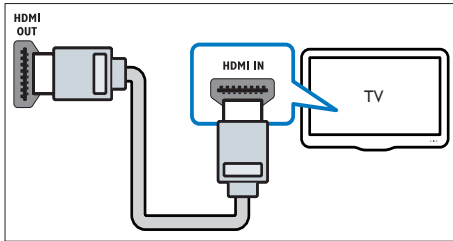
- 1 DC IN**  
Connects to the AC-DC adapter. (Model: PHILIPS G721DA-270250)
- 2 FM ANTENNA**  
Connects the FM antenna for radio reception.
- 3 AUX IN**  
Connects to the analog audio output on the TV or an analog device.
- 4 VIDEO OUT**  
Connects to the composite video input on the TV.
- 5 COMPONENT VIDEO OUT**  
Connects to the component video input on the TV.
- 6 HDMI OUT**  
Connects to the HDMI input on the TV.
- 7 COAXIAL IN**  
Connects to the coaxial audio output on the TV or a digital device.
- 8 OPTICAL IN**  
Connects to the optical audio output on the TV or a digital device.

## Connect to the TV

Connect your home theater directly to a TV through one of the following connectors (from highest to basic quality video):

- 1 HDMI**
- 2 Component video**
- 3 Composite video**

### Option 1: Connect to the TV through HDMI



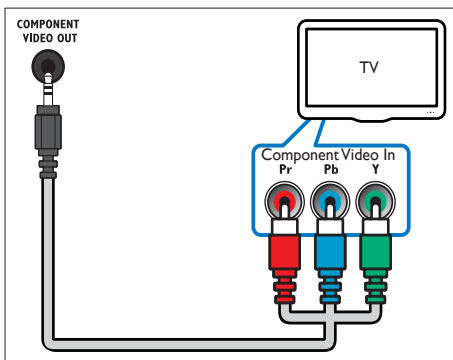
#### Note

- If the HDTV has a DVI connector, connect using an HDMI/DVI adapter.
- If the TV supports EasyLink HDMI CEC, control the home theater and TV with one remote control (see 'Use Philips EasyLink' on page 14).

### Option 2: Connect to the TV through YPbPr (component video)

#### Note

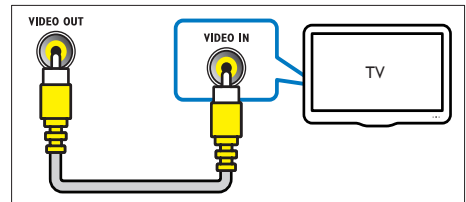
- The component video cable or connector might be labeled **Y Cb Cr** or **YUV**.



### Option 3: Connect to the TV through composite video (CVBS)

#### Note

- The composite video cable or connector might be labeled **AV IN**, **VIDEO IN**, **COMPOSITE** or **BASEBAND**.



## Connect audio from TV or other devices

Use your home theater to play audio from the TV or other devices such as a cable box. Choose from the following connectors.

#### Tip

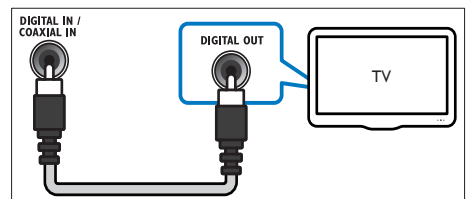
- Press **AUDIO SOURCE** repeatedly to select the audio output of your connection.

### Option 1: Connect audio through a digital coaxial cable

#### Note

- The digital coaxial cable or connector might be labeled **COAXIAL DIGITAL OUT** or **SPDIF OUT**.

(Cable not supplied)

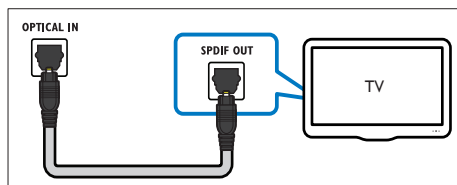


## Option 2: Connect audio through a digital optical cable

### Note

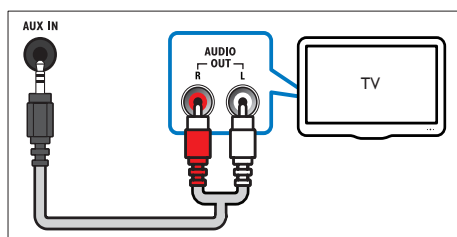
- The digital optical cable or connector might be labeled **SPDIF OUT** or **OPTICAL OUT**.

(Cable not supplied)



## Option 3: Connect audio through analog audio cables

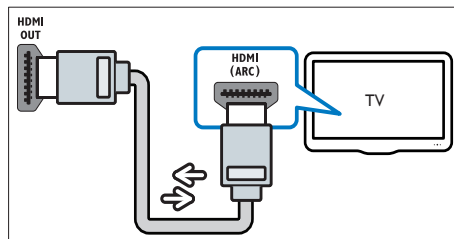
(Cable not supplied)



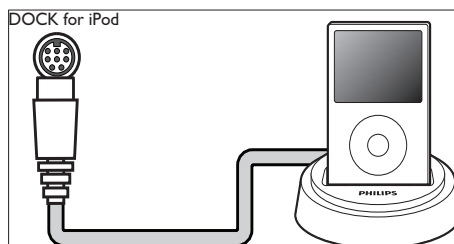
## Option 4: Connect audio through an HDMI cable

### Note

- The **HDMI** connector on the TV might be labeled **HDMI 1** or **HDMI ARC**. This feature works with Audio Return Channel (ARC) compatible devices only.



## Connect a Philips Dock for iPod/iPhone



### Note

- Philips iPod Dock is sold separately.
- You can use the iPod Dock to charge the iPod while the home theater is in iPod mode.

# 5 Use your home theater

This section helps you use the home theater to play media from a wide range of sources.

## Before you start

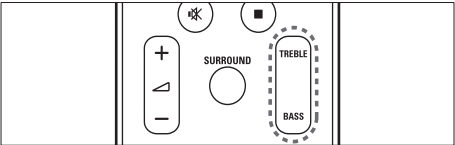
- Check that you:
- Make the necessary connections and complete the setup as described in the Quick Start.
  - Switch the TV to the correct source for the home theater.

## Choose your sound

This section helps you choose the ideal sound for your video or music.

### Change treble or bass

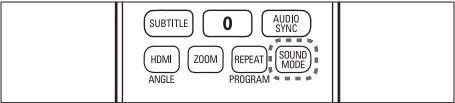
Change the high frequency (treble) or low frequency (bass) settings of the home theater to suit your video or music.



- 1 Press **TREBLE** or **BASS**.
- 2 Press **+/-** within five seconds to increase or decrease treble or bass.

### Change sound mode

Select predefined sound modes to suit your video or music.

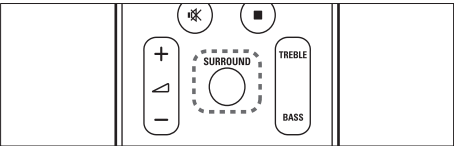


Press **SOUND MODE** repeatedly to cycle through the available sound modes.

Sound mode	Description
<b>ACTION / ROCK</b>	Enhanced low and high-range. Ideal for action movies and rock or pop music.
<b>DRAMA / JAZZ</b>	Clear mid and high-range. Ideal for drama movies and jazz music.
<b>CONCERT / CLASSIC</b>	Neutral sound. Ideal for live concerts and classical music.
<b>SPORTS</b>	Moderate mid-range and surround effects for clear vocals and the atmosphere of a live sport venue.
<b>NIGHT</b>	Dynamically controlled sound mode suitable for watching movies at night or for non-intrusive background music.

### Change virtual surround mode

DVS (Dolby Virtual Speaker) technology creates a highly compelling 5.1-channel listening experience from as few as two speakers.



During play, press **SURROUND** to switch on or off the surround sound effect.

## Play a disc

The home theater can play a wide variety of discs, including video, audio and mixed media (for example, a CD-R that contains JPEG pictures and MP3 music).

- 1 Insert a disc into the home theater.
- 2 Press **DISC**.
  - ➔ The disc plays or the disc main menu appears.
- 3 Press the following buttons to control play:

Button	Action
<b>Navigation buttons</b>	Navigate menus.
<b>OK</b>	Confirms an entry or selection.
<b>▶  </b>	Starts, pauses or resumes play.
<b>■</b>	Stops play.
<b>◀ / ▶</b>	Skips to the previous or next track, chapter or file.
<b>◀◀ / ▶▶</b>	Fast backwards or fast forwards. Press repeatedly to change the search speed. In pause mode, steps backward (DVD only) or forward by one frame.
<b>ZOOM</b>	Zooms into a video scene or picture.

## Use video options

Access several useful features while viewing video.

Available video options depend on the video source.

Button	Action
<b>▲ / ▼</b>	Searches slow-backward or slow-forward. Press repeatedly to change the search speed. For VCD/SVCD, slow-backward search is not available.
<b>AUDIO SYNC</b>	Selects an audio language or channel.
<b>SUBTITLE</b>	Selects subtitle language for video.
<b>ℹ INFO</b>	Displays information about what is playing.
<b>REPEAT</b>	Repeats a chapter or title.
<b>ANGLE</b>	Displays options for different camera angles.

## Use picture options

Access several useful features while viewing pictures.

Button	Action
<b>▲ / ▼</b>	Rotates the picture counter-clockwise or clockwise.
<b>◀ / ▶</b>	Skips to the previous or next picture.
<b>REPEAT</b>	Repeats a single file in the folder or repeats the entire folder. Shuffles files in a folder.
<b>ℹ INFO</b>	Displays photo albums in a thumbnail overview.

## Use audio options

Access several useful features while audio is played.

Button	Action
<b>REPEAT</b>	Repeats a track, the entire disc or shuffle tracks.

## Play from a USB storage device

The home theater is fitted with a USB connector that allows you to view pictures, listen to music or watch movies stored on a USB storage device.

- 1 Connect the USB storage device to the home theater.
- 2 Press **USB**.  
↳ A content browser appears.
- 3 Select a file, then press **OK**.
- 4 Press the playback buttons to control play (see 'Play a disc' on page 10).



### Note

- If the USB storage device does not fit into the connector, use a USB extension cable.
- The home theater does not support digital cameras that need a computer program to display photos.
- The USB storage device must be FAT or DOS-formatted, and Mass Storage Class compliant.

# More play features for disc or USB

Several advanced features are available for video or picture playback from a disc or USB storage device.

## Play a musical slideshow

Play music and pictures simultaneously to create a musical slideshow. The files must be stored on the same disc or USB storage device.

- 1 Select a music track, then press **OK**.
- 2 Press **↶ BACK** and go to the picture folder.
- 3 Select a picture, then press **OK** to start slideshow.
- 4 Press **■** to stop slideshow.
- 5 Press **■** again to stop music.

## Synchronize audio with video

If the audio and video are not synchronized, you can delay the audio to match the video.

- 1 Press and hold **AUDIO SYNC** until the audio sync message appears on the display panel.
- 2 Press **+/-** within five seconds to sync the audio with your video.

## Quick skip play to a specific time


Quick skip to a specific part of a video by entering the time of a scene.

- 1 During video play, press **ⓘ INFO**.
- 2 Press the **Navigation buttons** and **OK** to select:
  - **[TT Time]** : Title time.
  - **[Ch Time]** : Chapter time.
  - **[Disc Time]** : Disc time.
  - **[Track Time]** : Track time.
- 3 Enter the time of the scene, then press **OK**.

# Repeat play a specific section

Select sections of audio or video for repeat playback.

- 1 During playback, press **ⓘ INFO**.
- 2 Select **[Repeat]** > **[Repeat AB]** in the menu.
- 3 Press **OK** to mark the start point.
- 4 Press **OK** again to mark the end point.
  - ↳ Repeat play starts.
    - To cancel repeat A-B, press **ⓘ INFO**, select **[Repeat]** > **[Off]**, then press **OK**.

 **Note**

- Repeat play is only possible within a track/ chapter.

## Play from radio

- 1 Check that the FM antenna is connected.
- 2 Press **RADIO**.
  - ↳ “**AUTO INSTALL...PRESS PLAY**” appears on the display panel if you have not installed any radio stations. Press **▶||**
- 3 Press the following buttons to control play:

Button	Action
<b>◀/▶</b>	Selects a preset radio station.
<b>◀◀/▶▶</b>	Searches for a radio station.
<b>▲▼</b>	Fine tunes a radio frequency.
<b>■</b>	Press and hold to erase the preset radio station.
<b>PROGRAM</b>	Manual: Press once to access program mode, press <b>◀/▶</b> to assign a number to the radio station, then press again to store the radio station. Automatic: Press and hold for three seconds to reinstall radio stations.

## Note

- The home theater can store up to 40 radio stations.
- Press **■** to stop the installation.
- AM and digital radio are not supported.
- If no stereo signal is detected, or if fewer than five stations are found, you are prompted to install the radio stations again.
- For the best reception, place the antenna away from the TV or other sources of radiation.

## Change tuning grid

In some countries, you can switch the FM tuning grid between 50 kHz and 100 kHz. Changing tuning grid erases all preset radio stations.

- 1 Press **RADIO**.
- 2 Press **■**.
- 3 Press and hold **▶||** until 'GRID 9' (50 kHz) or 'GRID 10' (100 kHz) is displayed.

## Play audio from TV or other devices

Press **AUDIO SOURCE** repeatedly to select the audio output of the connected device (see 'Connect audio from TV or other devices' on page 8).

## Play from an MP3 player

Connect and play audio files from an MP3 player or other external audio devices.

- 1 Connect the MP3 player to the home theater.
- 2 Press **AUDIO SOURCE** repeatedly until '**MP3 LINK**' appears on the display panel.
- 3 Press the buttons on the MP3 player to select and play audio files.

## Play from an iPod or iPhone

By connecting and installing a Philips Dock for iPod/iPhone, you can use the home theater to play music, movies and photos from your iPod or iPhone.

## Note

- Philips Dock for iPod/iPhone is sold separately.
- You can charge your iPod/iPhone on the dock while the home theater is in iPod mode.

## Dock your iPod or iPhone

- 1 Connect the dock to the home theater and connect the yellow composite cable from the dock to the TV. For more information, see the Quick Start provided with the dock.
- 2 Switch on the iPod or iPhone and place it in the dock.

## Listen to music

- 1 Dock your iPod or iPhone (see 'Dock your iPod or iPhone' on page 13).
- 2 Press **DOCK for iPod** on the home theater remote control.
- 3 Browse on the iPod or iPhone screen to select track.
- 4 Press **OK** to play the track.

## Watch video or view slideshows

## Note

- On iPod, enable the TV ON setting.
- On iPhone, select the TV Out option.

- 1 Dock your iPod or iPhone (see 'Dock your iPod or iPhone' on page 13).
- 2 Press **DOCK for iPod** on the home theater remote control.
- 3 Switch the TV to the **AV/VIDEO** source (corresponding to the yellow composite cable).  
→ The TV screen goes blank.

- 4 Browse on the iPod or iPhone screen to select videos or photos.
- 5 Press **OK** on the home theater remote control or **PLAY** on the iPod/iPhone to play the video or photos.  
↳ The picture is displayed on the TV.

- 6 Press **OK** to confirm your choice.

#### Note

- The connected devices must be connected through HDMI and switched on.

---

## Use Philips EasyLink

The home theater supports Philips EasyLink, which uses the HDMI CEC (Consumer Electronics Control) protocol. EasyLink-compliant devices that are connected through HDMI connectors can be controlled by a single remote control.

#### Note

- Philips does not guarantee 100% interoperability with all HDMI CEC devices.

- 1 Switch on the HDMI CEC operations on the TV and other connected devices. See the manual of the TV or other devices for details.

- 2 Press  **SETUP**.

- 3 Select **[General Setup]**, then press **OK**.

- 4 Select **[EasyLink Setup]**, then press **OK**.

- 5 Select and adjust the following settings:
  - **[EasyLink]** : Enables or disables EasyLink.
  - **[One Touch Play]** : Enables or disables One Touch Play.

If enabled, you can use the remote control to start disc play in the home theater and the TV switches automatically to the correct channel.

- **[One Touch Standby]** : Enables or disables One Touch Standby.

If enabled, the home theater can be switched off to standby by a remote control from the TV or other connected HDMI CEC devices.

- **[System Audio Control]** : Enables or disables System audio control.

If enabled, follow the instructions on the TV to map the connected devices correctly to the audio connectors of the home theater. The home theater switches automatically to the audio source of the connected device.

- **[Audio Input Mapping]** : Updates audio input mapping if there are new devices connected.



## 6 Change settings





This section helps you to change the settings of your home theater.

### ! Caution

- Most of the settings are already configured with the best value for the home theater. Unless you have a specific reason to change a setting, it is best to leave it at the default value.

## Access the setup menu

- Press **⏏** **SETUP**.  
→ The following menu appears.

Symbol	Description
	[General Setup]
	[Audio Setup]
	[Video Setup]
	[Preference Setup]

- Select a setup menu, then press **OK**.  
See the following sections for information about how to change the settings of your home theater.
- Press **↶** **BACK** to return to the previous menu, or press **⏏** **SETUP** to exit.

### ≡ Note

- You cannot change a setting that is grayed out.

## Change general settings

- Press **⏏** **SETUP**.
- Select **[General Setup]**, then press **OK**.
- Select and adjust the following settings:
  - [EasyLink Setup]** : Sets up EasyLink to enjoy easy controls of all the HDMI CEC compliant devices using a single remote control (see 'Use Philips EasyLink' on page 14).
  - [Disc Lock]** : Restricts play to disc. Password (PIN code) is required to unlock the disc before play.
  - [Display Dim]** : Changes the brightness of the display panel.
  - [OSD Language]** : Selects the on-screen display menu language.
  - [Screen Saver]** : Enables or disables screen saver mode. If enabled, the screen enters idle mode after 10 minutes of inactivity (for example, in pause or stop mode).
  - [Sleep Timer]** : Sets a sleep timer to switch the home theater to standby after a specific time.
  - [DivX® VOD Code]** : Displays the DivX VOD registration code for the home theater.

- Press **OK** to confirm your choice.


### ≡ Note

- Before you purchase DivX videos and play them on the home theater, register the home theater on [www.divx.com](http://www.divx.com) using the DivX VOD code.

## Change audio settings

- Press **⏏** **SETUP**.
- Select **[Audio Setup]**, then press **OK**.
- Select and adjust the following setting:
  - [HDMI Audio]** : Enables or disables HDMI audio output for the TV. For settings related to HDMI, the TV must be connected through HDMI.
- Press **OK** to confirm your choice.


## Change video settings

- 1 Press  **SETUP**.
- 2 Select **[Video Setup]**, then press **OK**.
- 3 Select and adjust the following settings:
  - **[TV System]** : Selects a TV system that is compatible with the TV.
  - **[TV Display]** : Selects a picture display format to fit the TV screen.
  - **[Picture Settings]** : Selects a predefined color setting.
  - **[HDMI Setup]** : Selects HDMI video resolution and the wide screen display format for the TV. The Wide Screen Display option is only available for 16:9 wide screen TV display setting.
  - **[Progressive]** : Enables or disables progressive scan mode.
- 4 Press **OK** to confirm your choice.

### Note

- The best setting is automatically selected for the TV. If you need to change the setting, ensure that the TV supports the new setting.
- Some video settings depend on the video source, ensure that the disc and the TV support the setting or feature.
- For settings related to HDMI, the TV must be connected through HDMI.
- For settings related to progressive scan mode, the TV must be connected through Component Video.

## Change preference settings

- 1 Press  **SETUP**.
- 2 Select **[Preference Setup]**, then press **OK**.
- 3 Select and adjust the following settings:
  - **[Audio]** : Selects audio language for video.
  - **[Subtitle]** : Selects subtitle language for video.
  - **[Disc Menu]** : Selects menu language for video disc.
  - **[Parental]** : Restricts access to discs that are recorded with ratings. To play all discs irrespective of the rating, select level '8'.
  - **[PBC]** : Displays or skips the content menu for VCD and SVCD discs.
  - **[MP3/JPEG Display]** : Displays the MP3/JPEG folders or all the files.
  - **[Password]** : Sets or changes a PIN code to play a restricted disc. Enter '0000' if you do not have a PIN or if you have forgotten your PIN.
  - **[DivX Subtitle]** : Selects a character set that supports the DivX subtitle.
  - **[Version Info.]** : Displays the software version for the home theater.
  - **[Default]** : Resets the home theater to the default settings programmed at the factory.
- 4 Press **OK** to confirm your choice.

### Note

- If your preferred disc language is not available, you can select **[Other]** from the list and enter the 4-digit language code which can be found at the back of this manual.
- If you select a language that is not available on a disc, the home theater uses the default language of the disc.
- You cannot reset disc lock, password (PIN code) and parental control settings to their default values.

## 7 Update software

To check for new updates, compare the current software version of your home theater with the latest software version (if available) on the Philips web site.

### Check software version

- 1 Press **⏏** **SETUP**.
- 2 Select **[Preference Setup] > [Version Info.]**, then press **OK**.  
 ↳ The software version is displayed.

### Update software from a CD-R or USB

- 1 Check for the latest software version on [www.philips.com/support](http://www.philips.com/support).
  - Search for your model and click on 'software&drivers'.
- 2 Download the software onto a CD-R or USB storage device.
- 3 Insert the CD-R or connect the USB storage device to the home theater.
- 4 Follow the instructions on the TV to confirm the update.
  - ↳ When complete, the home theater automatically switches off and on again.
  - If not, disconnect the power cord for a few seconds and then reconnect it.



#### Caution

- Do not turn off the power or remove the CD-R or USB storage device when the software update is in progress because you might damage the home theater.

## 8 Product specifications



#### Note

- Specification and design are subject to change without notice.

#### Region code

The type plate on the back or bottom of the home theater shows which regions it supports

Country	DVD
Europe, United Kingdom	
Asia Pacific, Taiwan, Korea	
Latin America	
Australia, New Zealand	
Russia, India	
China	

#### Playback media

DVD-Video, DVD+R/+RW, DVD-R/-RW, DVD+R DL, CD-R/CD-RW, Audio CD, Video CD/SVCD, Picture CD, MP3-CD, WMA-CD, DivX-CD, USB storage device

#### File Format

- Audio: .mp3, .wma
- Video: .avi, .divx, .wmv
- Picture: .jpg

#### Amplifier

- Total output power: 400 W RMS (30% THD)
- Frequency response: 20 Hz-20 kHz /  $\pm 3$ dB
- Signal-to-noise ratio: > 65 dB (CCIR) / (A-weighted)
- Input sensitivity:
  - AUX: 2 V
  - MP3 LINK: 1 V

## Video

- Signal system: PAL / NTSC
- Component video output: 480i/576i, 480p/576p, 720p, 1080i
- HDMI output 480p, 576p, 720p, 1080i, 1080p

## Audio

- S/PDIF Digital audio input:
  - Coaxial: IEC 60958-3
  - Optical: TOSLINK
- Sampling frequency:
  - MP3: 32 kHz, 44.1 kHz, 48 kHz
  - WMA: 44.1 kHz, 48 kHz
- Constant bit rate:
  - MP3: 112 kbps - 320 kbps
  - WMA: 48 kbps - 192 kbps

## Radio

- Tuning range: FM 87.5-108 MHz (50/100 kHz)
- Signal-to-noise ratio: FM 50 dB
- Frequency response: FM 180 Hz ~ 10 kHz /  $\pm 6$ dB

## USB

- Compatibility: Hi-Speed USB (2.0)
- Class support: UMS (USB Mass Storage Class)
- File system: FAT12, FAT16, FAT32
- Maximum memory support: < 160GB

## Main Unit

- Power supply: 27 Vdc; 2.5 A (External switching power adapter)
- Power consumption: 35 W
- Standby power consumption: < 1 W
- Impedance: 8 ohm woofer, 8 ohm tweeter
- Speaker drivers: 3" woofer, 1.5" tweeter
- Frequency response: 150 Hz ~ 20 kHz
- Dimensions (WxHxD): 790.6 x 145 x 57.4 (mm)
- Weight: 2.23 kg

## Switching power adapter (G721DA-270250)

- Input: 100-240 Vac; 50-60 Hz; 1.35 A
- Output: 27 Vdc; 2.5 A

## Subwoofer

- Power supply: 120V/ 230 V; 50, 60 Hz
- Power consumption: 45 W
- Standby power consumption: < 1 W
- System: Bass Reflex System
- Impedance: 8 ohm
- Speaker driver: 6" woofer
- Frequency response: 35 Hz ~ 200 Hz
- Dimensions (WxHxD): 182 x 365 x 306 (mm)
- Weight: 6 kg

## Wall Mount

- Dimensions (WxHxD): 440 x 60 x 23 (mm)
- Weight: 0.54 kg

## Laser specification

- Type: Semiconductor laser GaAlAs (CD)
- Wave length: 645 - 665 nm (DVD), 770 - 800 nm (CD)
- Output power: 6 mW (DVD), 7 mW (VCD/CD)
- Beam divergence: 60 degrees.

## 9 Troubleshooting



### Warning

- Risk of electric shock. Never remove the casing of the product.

To keep the warranty valid, never try to repair the product yourself.

If you have problems using this product, check the following points before you request service. If you still have a problem, register your product and get support at [www.philips.com/welcome](http://www.philips.com/welcome).

If you contact Philips, you will be asked for the model and serial number of your product. The model number and serial number are on the back or bottom of your product. Write the numbers here:

Model No. \_\_\_\_\_

Serial No. \_\_\_\_\_

### Main unit

#### The buttons on this home theater do not work.

- Disconnect the home theater from the power outlet for a few minutes, then reconnect.

### Picture

#### No picture.

- Ensure that the TV is switched to the correct source for the home theater.

#### No picture on HDMI connection.

- Check if the HDMI cable is faulty. Replace with a new HDMI cable.
- If this happens when you change the HDMI video resolution, press **HDMI** repeatedly until picture appears.

### Sound

#### No sound from subwoofer

**1** In Standby, press and hold **■ (Stop)** on the remote control until **[PAIRING]** flashes on the main unit.

**2** Press and hold **PAIR** on the subwoofer until the blue and green indicators on the subwoofer flash alternately.

**3** If the wireless connection succeeds, **[PAIR OK]** is displayed and the green indicator on the subwoofer lights up.

- If the wireless connection fails, **[PAIR FAIL]** is displayed, and the blue and green indicators on the subwoofer remain lit. Check whether there is any interference from nearby electronic devices. Remove the conflict or strong interference, then repeat the above procedures.

#### No sound.

- Ensure that the audio cables are connected and select the correct input source (for example, **AUDIO SOURCE**, **USB**) for the device you want to play.

#### No sound on HDMI connection.

- You might not hear any sound if the connected device is not HDCP (High-bandwidth Digital Content Protection) compliant or only DVI compatible. Use an analog or digital audio connection.
- Ensure that the **[HDMI Audio]** is enabled.

#### No sound from TV program.

- Connect an audio cable from the audio input on the home theater to the audio output on the TV, then press **AUDIO SOURCE** repeatedly to select the correct audio source.

#### Distorted sound or echo.

- Ensure that the TV volume is muted or set to minimum if you are playing audio through the home theater.

#### Audio and video are not synchronized.

- 1) Press and hold **AUDIO SYNC**. 2) Press **+/-** within five seconds.

### Play

#### Disc cannot be played.

- Clean the disc.
- Ensure that the home theater supports the disc (see 'Product specifications' on page 17).
- Ensure that the home theater supports the region code of the disc.
- For DVD±RW or DVD±R, ensure that the disc is finalized.

#### DivX video files cannot be played.

- Ensure that the DivX file is encoded according to the 'Home Theater Profile' with the DivX encoder.
- Ensure that the DivX video file is complete.

**DivX subtitles do not display correctly.**

- Ensure that the subtitle file name is the same as the movie file name.
- Select the correct character set: 1) Press **⏏** **SETUP**. 2) Select **[Preference Setup]**. 3) Select **[DivX Subtitle]**. 4) Select a supported character set. 5) Press **OK**.

**The contents of a USB storage device cannot be read.**

- Ensure that the format of the USB storage device is compatible with the home theater (see 'Product specifications' on page 17).
- Ensure that the USB storage device is formatted with a file system that is supported by the home theater (note that NTFS is not supported).

**'No entry' or 'x' sign appears on the TV.**

- The operation is not possible.

**EasyLink feature does not work.**

- Ensure that the home theater is connected to a Philips brand EasyLink TV and that EasyLink is on.

**I do not want my home theater to be switched on when I switch on my TV.**

- This is the correct behavior for Philips EasyLink (HDMI-CEC). To make the home theater work independently, switch off EasyLink.

**The video (movies, photos, video clips, etc.) contents of the iPod/iPhone do not display on TV.**

- Video and photo browsing is not supported, you can only browse the video and photo contents on the iPod/iPhone itself.

**Cannot see pictures from my iPod/iPhone on the TV.**

- Connect a yellow composite cable from the dock to the TV.
- Switch the TV to the **AV/VIDEO** source (corresponding to the yellow composite cable).
- Press **PLAY** on the iPod or iPhone to start the slideshow.

# 10 Index

## A

amplifier	17
audio	
connection	8
language	16
synchronize with video	12
audio input mapping	14

## C

care	4
change settings	15
connect	
audio from TV	8, 13
guide	7
other devices	8
TV	7
connectors	7
contact us	19

## D

disc	
play	10
supported discs	17
disposal of your product	4
DivX	
registration code	15
subtitle	16

## E

EasyLink	
settings	14

## F

file formats	17
--------------	----

## H

HDMI CEC (see Easylink)	14
-------------------------	----

## I

iPod	
connect	9
play	13

## L

<b>language</b>	
audio	16
disc menu	16
on-screen display	15
subtitle	16

## M

<b>MP3</b>	
play	13

## O

<b>one-touch play</b>	14
<b>one-touch standby</b>	14
<b>overview</b>	
connectors	7
main unit	5
remote control	5

## P

<b>password</b>	16
<b>picture</b>	
options	11
slide show	12, 11
thumbnail overview	11
troubleshooting	19
<b>play</b>	
disc	10
MP3 player	13
options	10
radio	12
troubleshooting	19
USB storage device	11
<b>product care</b>	4
<b>product specifications</b>	17
<b>progressive scan</b>	2

## R

<b>radio</b>	
play	12
program	12
tune	12
tuning grid	13
<b>recycle</b>	4
<b>region code</b>	17
<b>remote control</b>	5
<b>repeat</b>	10, 12
<b>rotate pictures</b>	11

## S

<b>safety</b>	3
<b>settings</b>	
general	15
parental control	16
preferences	16
restore factory settings	16
<b>slideshow</b>	
play musical slideshow	12
<b>software</b>	
update	17
version	17
<b>sound</b>	
mode	10
treble and bass	10
troubleshooting	19
<b>system audio control</b>	14

## T

<b>time search video</b>	12
<b>troubleshooting</b>	19
<b>TV</b>	
audio from TV	8, 13
connect	7

## U

<b>USB</b>	
play	11
software update	17

## V

<b>video</b>	
synchronize with audio	12
<b>video on demand (VOD)</b>	15

# Language Code

Abkhazian	6566
Afar	6565
Afrikaans	6570
Amharic	6577
Arabic	6582
Armenian	7289
Assamese	6583
Avestan	6569
Aymara	6589
Azerbaidjani	6590
Bahasa Melayu	7783
Bashkir	6665
Belarusian	6669
Bengali	6678
Bihari	6672
Bislama	6673
Bokmål, Norwegian	7866
Bosanski	6683
Brezhoneg	6682
Bulgarian	6671
Burmese	7789
Castellano, Español	6983
Catalán	6765
Chamorro	6772
Chechen	6769
Chewa; Chichewa; Nyanja	7889
中文	9072
Chuang; Zhuang	9065
Church Slav; Slavonic	6785
Chuvash	6786
Corsican	6779
Česky	6783
Dansk	6865
Deutsch	6869
Dzongkha	6890
English	6978
Esperanto	6979
Estonian	6984
Euskara	6985
Ελληνικά	6976
Faroese	7079
Français	7082
Frysk	7089
Fijian	7074
Gaelic; Scottish Gaelic	7168
Gallegan	7176
Georgian	7565
Gikuyu; Kikuyu	7573
Guarani	7178
Gujarati	7185
Hausa	7265
Herero	7290
Hindi	7273
Hiri Motu	7279
Hrwatski	6779
Ido	7379
Interlingua (International)	7365
Interlingue	7365
Inuktitut	7385

Inupiaq	7375
Irish	7165
Íslenska	7383
Italiano	7384
Ivrit	7269
Japanese	7465
Javanese	7486
Kalaallisut	7576
Kannada	7578
Kashmiri	7583
Kazakh	7575
Kernewek	7587
Khmer	7577
Kinyarwanda	8287
Kirghiz	7589
Komi	7586
Korean	7579
Kuanyama; Kwanyama	7574
Kurdish	7585
Lao	7679
Latina	7665
Latvian	7686
Letzeburgesch;	7666
Limburi; Limburger	7673
Lingala	7678
Lithuanian	7684
Luxembourgish;	7666
Macedonian	7775
Malagasy	7771
Magyar	7285
Malayalam	7776
Maltese	7784
Manx	7186
Maori	7773
Marathi	7782
Marshallese	7772
Moldavian	7779
Mongolian	7778
Nauru	7865
Navaho; Navajo	7886
Ndebele, North	7868
Ndebele, South	7882
Ndonga	7871
Nederlands	7876
Nepali	7869
Norsk	7879
Northern Sami	8369
North Ndebele	7868
Norwegian Nynorsk;	7878
Occitan; Provençal	7967
Old Bulgarian; Old Slavonic	6785
Oriya	7982
Oromo	7977
Ossetian; Ossetic	7983
Pali	8073
Panjabi	8065
Persian	7065
Polski	8076
Português	8084

Pushto	8083
Russian	8285
Quechua	8185
Raeto-Romance	8277
Romanian	8279
Rundi	8278
Samoan	8377
Sango	8371
Sanskrit	8365
Sardinian	8367
Serbian	8382
Shona	8378
Shqip	8381
Sindhi	8368
Sinhalese	8373
Slovensky	8373
Slovenian	8376
Somali	8379
Sotho; Southern	8384
South Ndebele	7882
Sundanese	8385
Suomi	7073
Swahili	8387
Swati	8383
Svenska	8386
Tagalog	8476
Tahitian	8489
Tajik	8471
Tamil	8465
Tatar	8484
Telugu	8469
Thai	8472
Tibetan	6679
Tigrinya	8473
Tonga (Tonga Islands)	8479
Tsonga	8483
Tswana	8478
Türkçe	8482
Turkmen	8475
Twi	8487
Uighur	8571
Ukrainian	8575
Urdu	8582
Uzbek	8590
Vietnamese	8673
Volapuk	8679
Walloon	8765
Welsh	6789
Wolof	8779
Xhosa	8872
Yiddish	8973
Yoruba	8979
Zulu	9085



