

Frequently Asked Questions

- Q Is the LCD screen touch-enabled?  
A The LCD screen is not touch-enabled. Use the keys in the back of the frame to control digital photo display.
- Q Can I switch between different photo slideshows by using different memory cards?  
A Yes, photo frame will show the slideshow photos in the card currently connected.
- Q Can I use photo frame to delete photos on memory card?  
A Yes, it supports operations to delete photos on external devices.
- Q Can I print photos from Digital photo display?  
A No, it does not support direct photo printing.

Welcome to Philips!  
Register your product and get support at  
Online help: [www.philips.com/welcome](http://www.philips.com/welcome)



2008 © Koninklijke Philips Electronics N.V.  
All rights reserved.  
Specifications are subject to change without notice.  
Trademarks are the property of Koninklijke Philips Electronics N.V. or their respective owners.  
Version no. SPF1007Q1

PhotoFrame

SPF1007

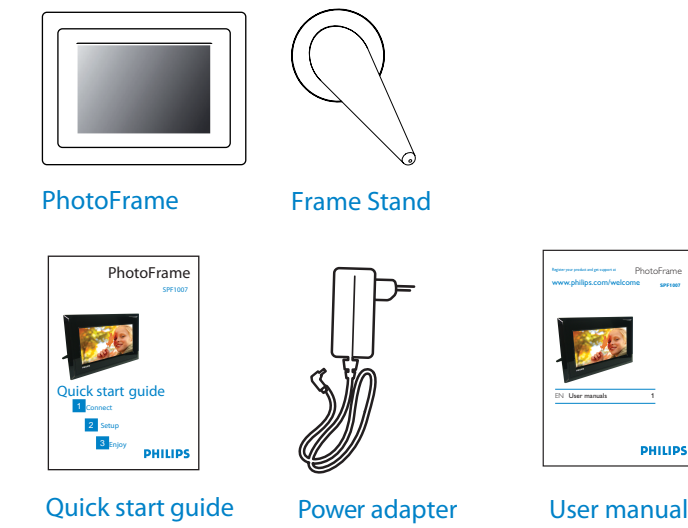


Quick start guide

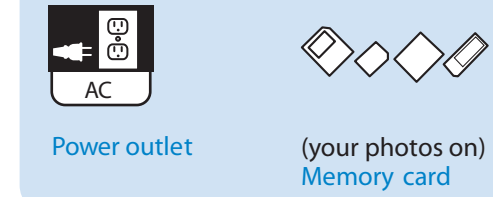
- 1 Connect
- 2 Setup
- 3 Enjoy



What's in the box



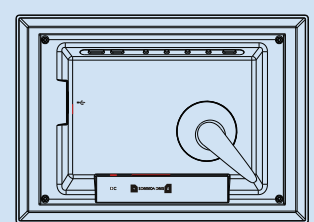
What else you'll need



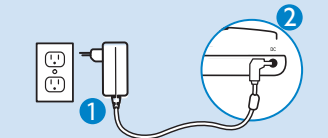
1 Connect

Install the Stand

- Place the head of the stand in the socket
- Rotate counterclockwise until the stand clicks into place.

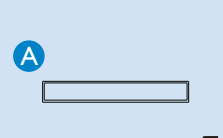


Adapter connect to Power

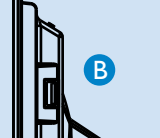


- Connect the adapter (accessories) to the DC jack for power on.
- Welcome display with (HELP) page, Press any key to play or few seconds later auto run.

Card Slot

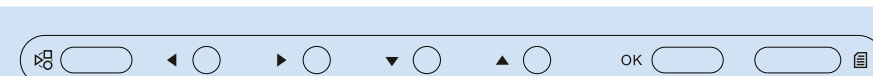


USB Slot



2 Setup

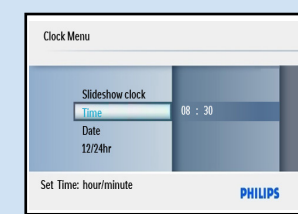
Easy Control Keys



- |       |                |
|-------|----------------|
| Mode  | Down           |
| Left  | OK / Play / Ok |
| Right | Menu           |
| Up    |                |

Set Time

- Press "Mode" key go into **MainMenu**
- Select the **Clock/Time** with Up/Down key, press Play/Ok key
- Setting the **Time** with "Up/Down", toggle **Hr/min** with "Left/Right" key.
- Complete the setting by "Play/OK" key



Set Date

- Press "Mode" key go into **MainMenu**
- Select the **Date** with "Up/down" key, Press "Play/OK" key .
- Setting the **Date** with "Up/Down", toggle **Day/Month/Year** with "Left/Right" key.
- Complete the setting by "Play/OK" key

Set Auto on /off timer

- Press "Mode" key go into **MainMenu**
- Select the **Setup/AutoDim** with "Up/down" key, Press "Play/OK" key .
- Turn-on the **AutoDim Timer/ON** with "Up/down" key, Press "Play/OK" key .
- Setting the **AutoDim Start** with "Up/Down", toggle **Hr/min** with "Left/Right" key.
- Complete the setting by "Play/OK" key
- Setting the **AutoDim End** with "Up/Down", toggle **Hr/min** with "Left/Right" key.
- Complete the setting by "Play/OK" key
- For Turn-Off, select the **AutoDim Timer/OFF** with "Up/down" key, Press "Play/OK" key .

Set Brightness

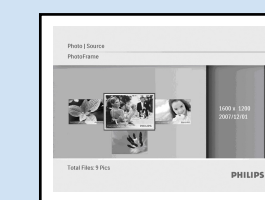
- Press "Mode" key go into **MainMenu**
- Select the **Setup/Brightness** with "Up/down" key, Press "Play/OK" key.
- Complete the setting by "Play/OK" key

3 Enjoy

- Connect the adapter (accessories) to the DC jack for power on.
- Welcome display with **Help** page, Press any key to play or few seconds later auto run.
- Press "Mode" key to toggle the **SlideShow**
- Press "Play/OK" key to toggle **Browse > Calendar > SlideShow** to choose your favour.

View Photo with Memory cards

- Insert the Memory card to the "SD -MMC- xD- MS" slot include the SD/SDHC/xD/MS/MS Pro.
- Connect the adapter (accessories) to the DC jack for power on.
- Welcome display with **Help** page, Press any key to play or few seconds later auto run.
- Photo on SD card will auto play by slideshow mode
- Press "PLAY/OK" key, change the mode to **Browse** or **Clock** or **SlideShow** in toggle.



View photo with USB Pen Driver

- Insert the Pen Driver onto the USB Slot
- Connect the adapter (accessories) to the DC jack for power on.
- Welcome display with **Help** page, Press any key to play or few seconds later auto run.
- Photo on USB driver will auto play by Slideshow mode
- Press "PLAY/OK" key, change the mode to **Browse** or **Clock** or **SlideShow** in toggle

Delete Photo

- At the Slideshow/ Browse/ Thumbnail, selected photo is showing.
- Press "Menu" key go into **PhotoMenu**
- Select the **Delete** by "Up/Down" keys, confirm with "Play/OK" key.
- Double confirm select the **YES** with "Play/OK" key

Thumbnail features

- Press "Mode" key to toggle **Thumbnail** or
- Press "Mode" key choose **MainMenu** ,
- Select the **Photo/Source driver** with "Up/Dn"key, pressing "Play/Ok" key Define your photo source with **Thumbnail** play mode.
- Return to **MainMenu** by pressing "Mode" key.
- Or Return to **SlideShow** by pressing "Play/Ok" key.

Perform the RadiantColor to extends photo colors to full screen

- Press "Mode" key go into **MainMenu**
- Select the **Setup/ Background/RadiantColor** with "Up/Dn" key, press "Play/Ok" key
- Return to normal by select the **Setup/ /Background/Black** with "Up/Dn"key,press "Play/Ok" key



How to perform the Collage effect

- Press "Mode" key choose **MainMenu**
- Select the **Setup/Collage/Random** with "Up/Dn"key,press "Play/Ok" key
- Return to normal by select the **Setup/Collage /Off** with "Up/Dn" key, press "Play/Ok" key

