

Always there to help you

Register your product and get support at
www.philips.com/welcome



AEA2500

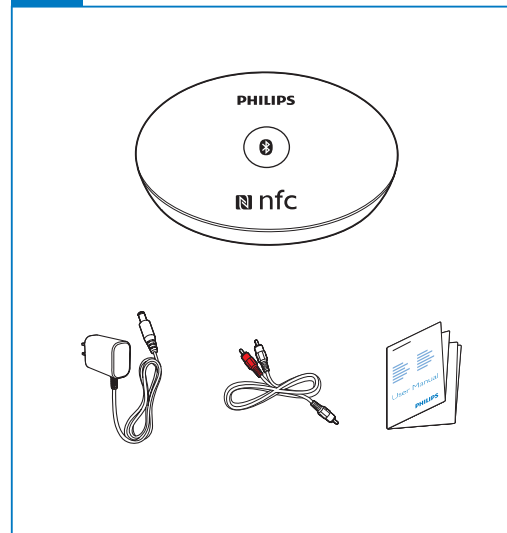
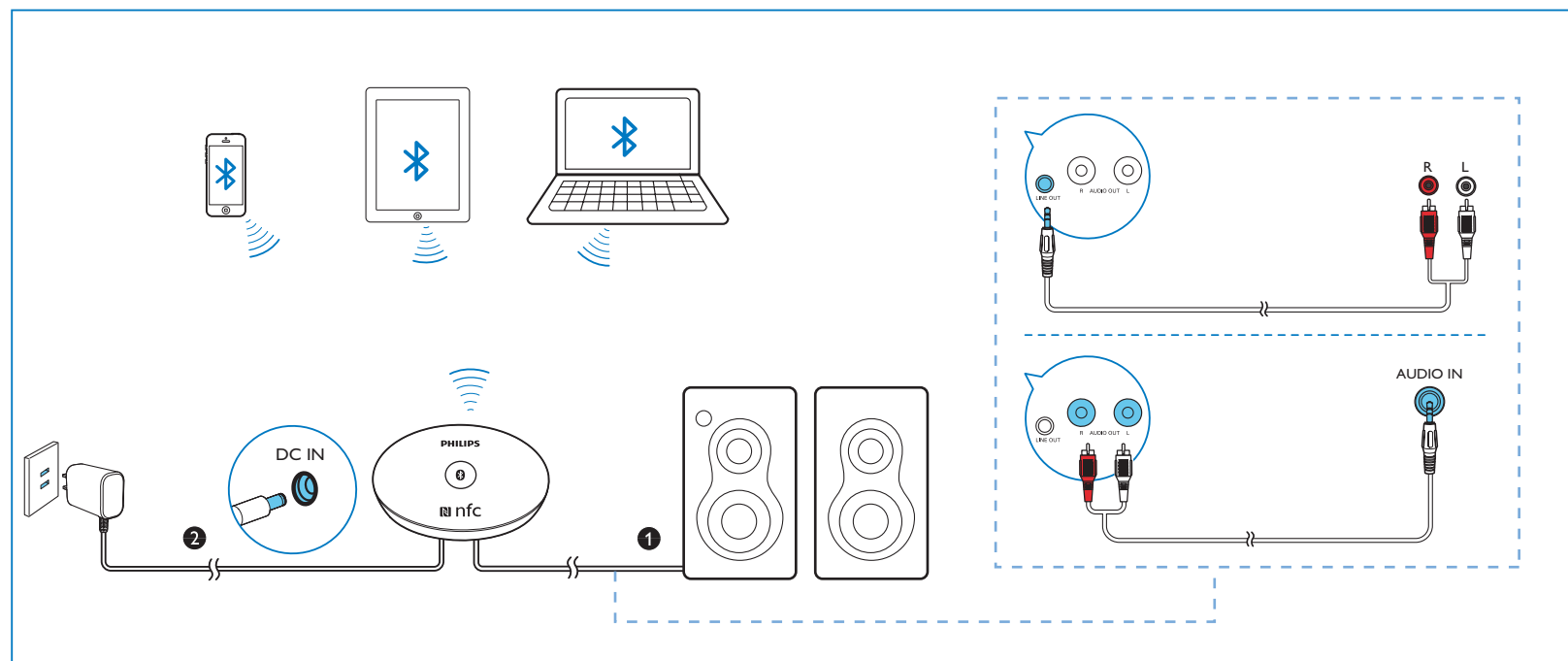


User manual

使用手冊

PHILIPS

Install 安裝

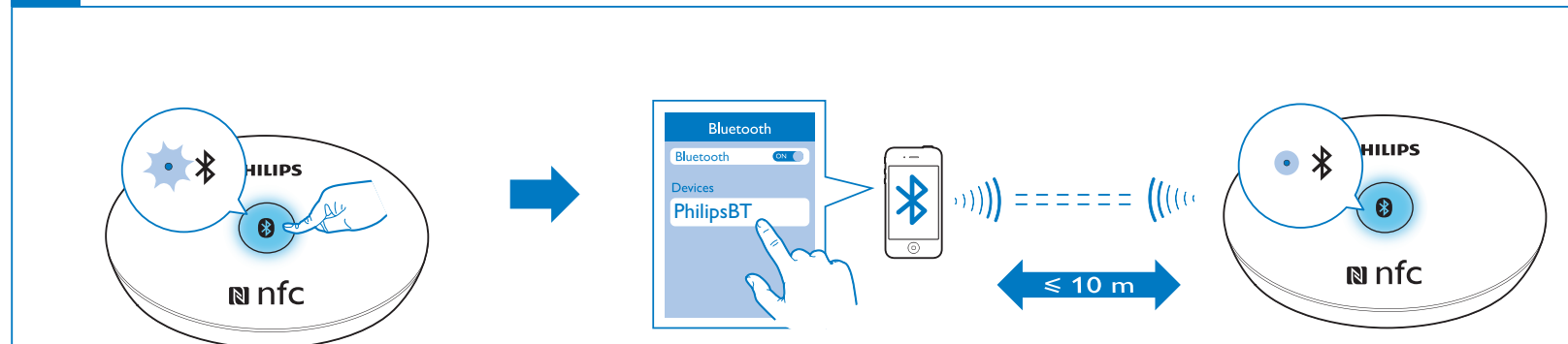


2013 © WOOX Innovations Limited. All rights reserved. This product was brought to the market by WOOX Innovations Limited or one of its affiliates, further referred to in this document as WOOX Innovations, and is the manufacturer of the product. P&F is the warrantor in relation to the product with which this booklet was packaged. Philips and the Philips Shield Emblem are registered trademarks of Koninklijke Philips N.V."



AEA2500_UM_SafetySheet_37_V1.0

Pair & Connect 配對和連線



EN Press **Ⓚ** to switch to the pairing mode. **Ready for pairing:** Blue light flashes.

中文 按 **Ⓚ** 以切換到配對模式。準備配對：藍色燈閃爍。

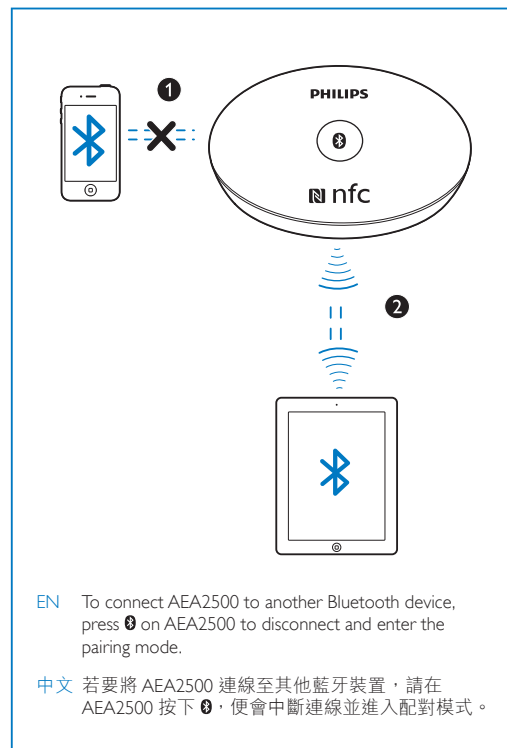
On your Bluetooth device, activate Bluetooth and search for **Philips BT**. If necessary, enter the passcode 0000.

在您的藍牙裝置上，啟動藍牙並搜尋 **Philips BT**。視需要輸入密碼 0000。

Connected: Blue light is always on. Next time you switch to the pairing mode and then, press **Ⓚ**, AEA2500 connects to the last paired device automatically.

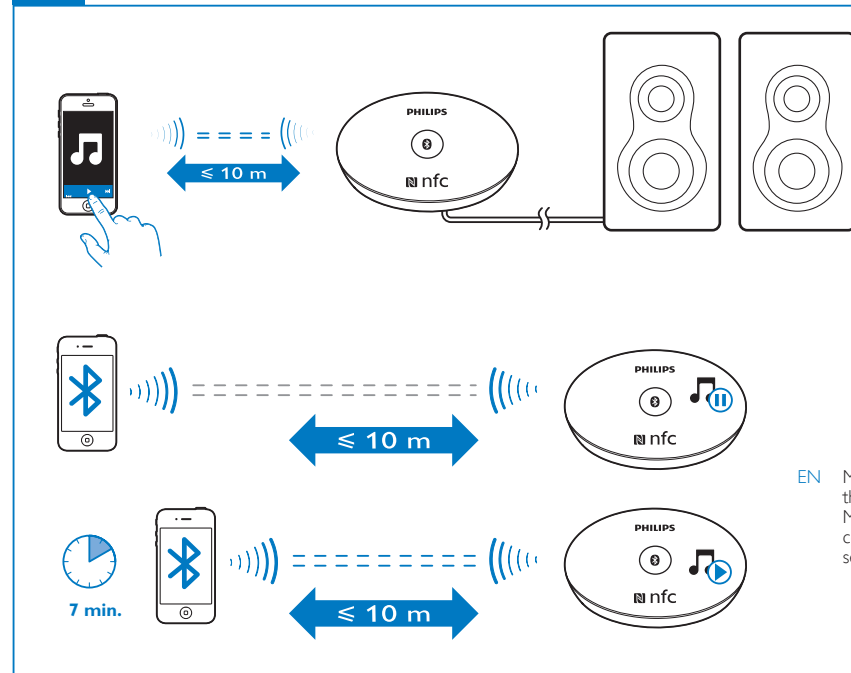
已連線：藍色燈持續亮起。下次切換到配對模式，然後按 **Ⓚ**，AEA2500 會自動連線至上一次配對的裝置。

Play 播放



EN To connect AEA2500 to another Bluetooth device, press **Ⓚ** on AEA2500 to disconnect and enter the pairing mode.

中文 若要將 AEA2500 連線至其他藍牙裝置，請在 AEA2500 按下 **Ⓚ**，便會中斷連線並進入配對模式。



EN The music streaming may be interrupted by obstacles between the device and AEA2500, such as walls, or other devices nearby that operate in the same frequency.

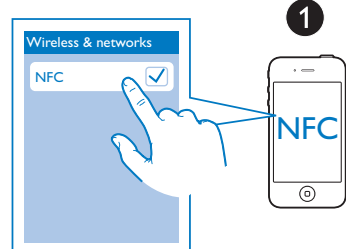
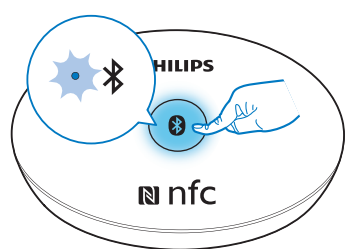
中文 裝置和 AEA2500 之間的障礙物 (例如牆壁，或附近以相同頻率運作其他裝置) 可能造成音樂串流中斷。

EN Music play on AEA2500 pauses, if you move the connected device out of range. Music play on AEA2500 resumes, if the connected device is back in range within seven minutes.

中文 若您將連線的裝置移動超出範圍，AEA2500 會暫停播放音樂。若連線的裝置在七分鐘內移回範圍內，AEA2500 會繼續播放音樂。



Pair through NFC 透過 NFC 配對

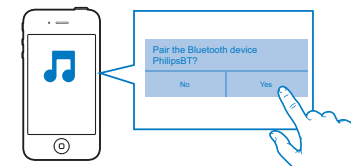
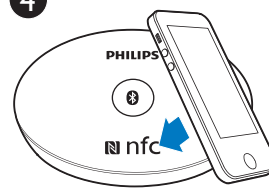


1

2

3

4



5

EN If your Bluetooth device supports NFC (Near Field Communication), do the following:

On your Bluetooth device, **1.** switch on NFC; **2.** switch on Bluetooth; **3.** start music play.

4. With the back of the Bluetooth device, tap the NFC tag on AEA2500. **5.** Follow the onscreen instruction to start to pair and connect.

中文 您的藍牙裝置可支援 NFC (近距離無線通訊)，請執行下列動作：

在您的藍牙裝置上，**1.** 開啟 NFC；**2.** 開啟藍牙；**3.** 開始播放音樂。

4. 以藍牙裝置的背面輕觸 AEA2500 上的 NFC 感應貼片。**5.** 按照螢幕上的指示，開始配對並連線。

EN

Specifications

Amplifier

- **Output Voltage:** 1000 mV RMS
- **Signal to Noise Ratio:** > 62 dBA
- **Total Harmonic Distortion:** < 2 %

Bluetooth

- **Standard:** Bluetooth Standard Version 3.0
- **Frequency band:** 2.402 ~ 2.480 GHz ISM Band
- **Range:** 10 m (free space)

General information

- **Power supply**
 - AC/DC adapter
 - AS030-090-EA033(Philips)
 - Input: 100-240 V ~ 50/60 Hz, 0.15 A
 - Output: 9 V DC, 0.33 A
- **Power consumption** Operation: 3 W; Standby: < 0.5 W
- **Dimensions**
 - Main Unit (W x H x D): 74 x 28 x 72 mm
- **Weight**
 - Main Unit: 0.04 kg

中文

規格

擴大機

- **輸出電壓：** 1000 mV RMS
- **訊噪比：** > 62 dBA
- **總諧波失真：** < 2 %

藍牙

- **標準：** 藍牙標準版本 3.0
- **頻率波段：** 2.402 ~ 2.480 GHz ISM 波段
- **範圍：** 10 公尺 (自由空間)

一般資訊

- **電源供應**
 - AC/DC 變壓器
 - AS030-090-EA033 (Philips)
 - 輸入：100-240 V ~ 50/60 Hz，0.15 A
 - 輸出：9 V DC，0.33 A
- **耗電量** 操作：3 W；待機：< 0.5 W
- **尺寸**
 - 主裝置 (寬 x 高 x 深)：74 x 28 x 72 公釐
- **重量**
 - 主裝置：0.04 公斤

Important

Safety

Read these instructions. Follow all instructions.

Do not use this apparatus near water.

Do not place near any heat sources such as radiators, heat registers, stoves, or other apparatus (including amplifiers) that produce heat. Protect the power cord from being walked on or pinched, particularly at plugs, convenience receptacles, and the point where they exit from the apparatus.

Only use attachments/accessories specified by the manufacturer. Use only power supplies listed in the user manual.

The product shall not be exposed to dripping or splashing. Do not place any sources of danger on the product (e.g. liquid filled objects, lighted candles).

Where the plug of the Direct Plug-in Adapter is used as the disconnect device, the disconnect device shall remain readily operable.

Warning

- Never remove the casing of this apparatus.
- Never lubricate any part of this apparatus.
- Never place this apparatus on other electrical equipment.
- Keep this apparatus away from direct sunlight, naked flames or heat.
- Ensure that you always have easy access to the power cord, plug or adaptor to disconnect the apparatus from the power.

product helps prevent potentially negative consequences on the environment and human health.

Notice

Bluetooth

The Bluetooth® word mark and logos are registered trademarks owned by Bluetooth SIG, Inc. and any use of such marks by WOOX Innovations is under license.



© 2013 CSR plc and its group companies.

The aptX® mark and the aptX logo are trade marks of CSR plc or one of its group companies and may be registered in one or more jurisdictions.



The N Mark is a trademark or registered trademark of NFC Forum, Inc. in the United States and in other countries.

Specifications are subject to change without notice. Philips and the Philips' Shield Emblem are registered trademarks of Koninklijke Philips N.V. and are used by WOOX Innovations Limited under license from Koninklijke Philips N.V. WOOX Innovations reserves the right to change products at any time without being obliged to adjust earlier supplies accordingly.

重要事項

安全性

閱讀這些指示。
遵循所有指示。

請勿在近水處使用本產品。

請勿將本產品放置在接近熱源處，例如暖器裝置、暖氣孔、火爐或其他會產生高溫的產品 (包括擴大機在內)。妥善保護電源線，避免踩踏或夾壓，尤其是插頭、便利插座，以及電源線與產品的連接處。

僅使用原廠指定的附件/配件。

限用使用手冊上所列的電源供應器。

切勿將本產品置於滴水或濺水環境中。

請勿在產品上放置危險物品 (如盛裝液體的容器、點燃的蠟燭等)。

直接插入式電源變壓器的插頭作為中斷連接裝置時，中斷連接裝置應保持隨時可操作。

警告

- 請勿打開產品外殼。
- 請勿在本產品的任何部位使用潤滑油。
- 請勿將本產品放置在其他電器上。
- 請勿讓本產品直接曝曬於陽光下，或靠近未隔離的火爐或熱源。
- 請確認電源線、插頭或變壓器位於容易取得的地方，以方便中斷產品電源。

經型式認證合格之低功率射頻電機，非經許可，公司、商號或使用者均不得擅自變更頻率、加大功率或變更原設計之特性及功能。

低功率射頻電機之使用不得影響飛航安全及干擾合法通信；經發現有干擾現象時，應立即停用，並改善至無干擾方得繼續使用。

符合

備註

- 機型牌位於產品底部。

保護環境

環境保護資訊

所有非必要之包裝材料均已省略。我們嘗試讓包裝可以輕易拆解成三種材質：厚紙板 (外盒)、聚苯乙烯泡棉 (防震) 以及聚乙烯 (包裝袋、保護性泡棉膠紙)。產品本身含有可回收並重複使用的材質，但是需由專業公司拆解。請根據當地法規丟棄包裝材料和舊設備。

回收



您的產品是使用高品質材質和元件所設計製造，可回收和重複使用。

請勿將您的產品與其他家用廢棄物共同丟棄。請瞭解當地電子及電器廢棄物的垃圾分類相關法規。正確處理廢棄產品有助於避免對環境和人類健康帶來負面影響。

Compliance

Note

- The type plate is located on the bottom of the product.

Care of the environment

Environmental information

All unnecessary packaging has been omitted. We have tried to make the packaging easy to separate into three materials: cardboard (box), polystyrene foam (buffer) and polyethylene (bags, protective foam sheet.)

Your system consists of materials which can be recycled and reused if disassembled by a specialized company. Please observe the local regulations regarding the disposal of packaging materials, and old equipment.

Recycling



Your product is designed and manufactured with high quality materials and components, which can be recycled and reused. Never dispose of your product with other household waste. Please inform yourself about the local rules on the separate collection of electrical and electronic products. The correct disposal of your old

注意

Bluetooth

Bluetooth®文字標記及標誌為 Bluetooth SIG, Inc. 之註冊商標，WOOX Innovations 對這些標記的使用均已獲得授權。



© 2013 CSR plc 與其集團公司。

aptX® 標記與 aptX 標誌為 CSR plc 或其集團公司中某一公司的商標，並可於一或多個管轄區中註冊。



N 標誌為 NFC Forum, Inc. 在美國及其他國家/地區的商標或註冊商標。

規格如有更改，恕不另行通知。Philips 以及 Philips 盾牌標誌為 Koninklijke Philips N.V. 的註冊商標，且經 Koninklijke Philips N.V. 授權供 WOOX Innovations Limited 使用。WOOX Innovations 保留隨時變更產品的權利，毋需隨之調整早期庫存。