

PHILIPS

Party Speaker

4000 Series

TAX4209



www.philips.com/welcome



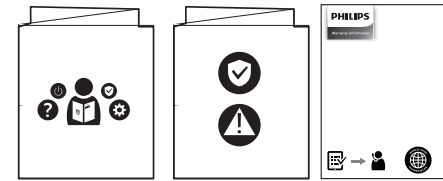
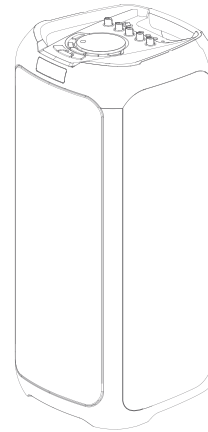


EN Before using your Product, read all accompanying safety information

ES Antes de usar el producto, lea toda la información de seguridad que lo acompaña

FR Avant d'utiliser votre produit, lisez toutes les informations de sécurité qui l'accompagnent.

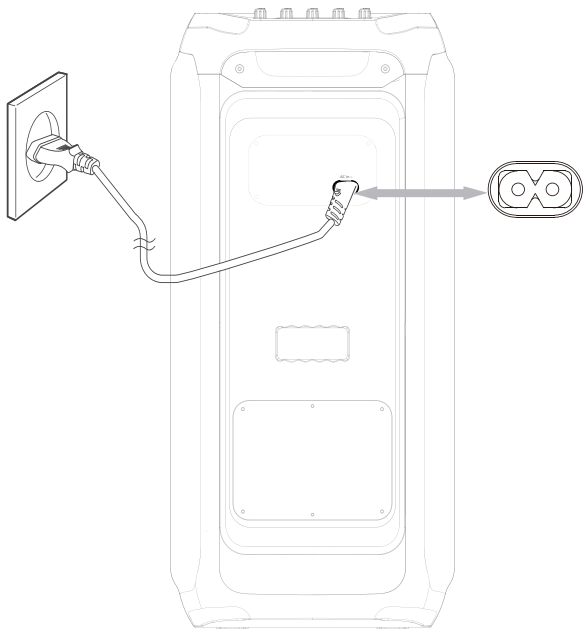
PT Antes de utilizar o produto, leia todas as informações de segurança que o acompanham



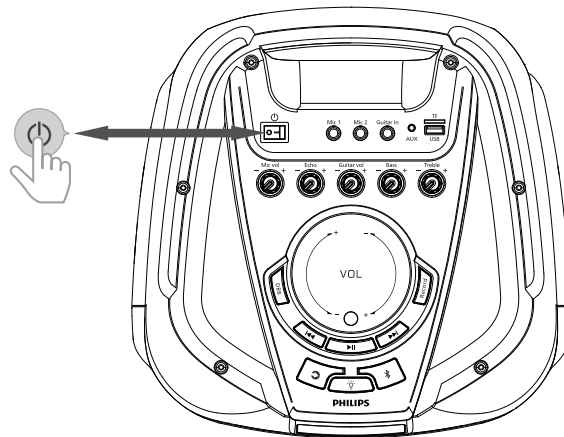
1



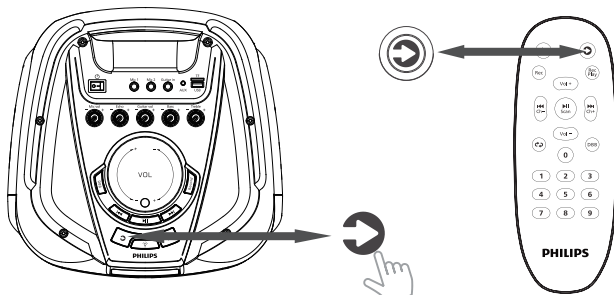
1



2

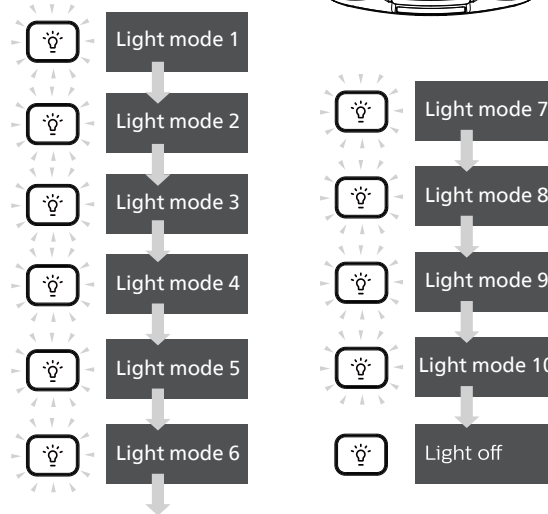
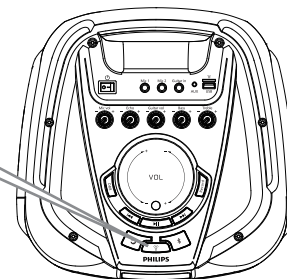


2

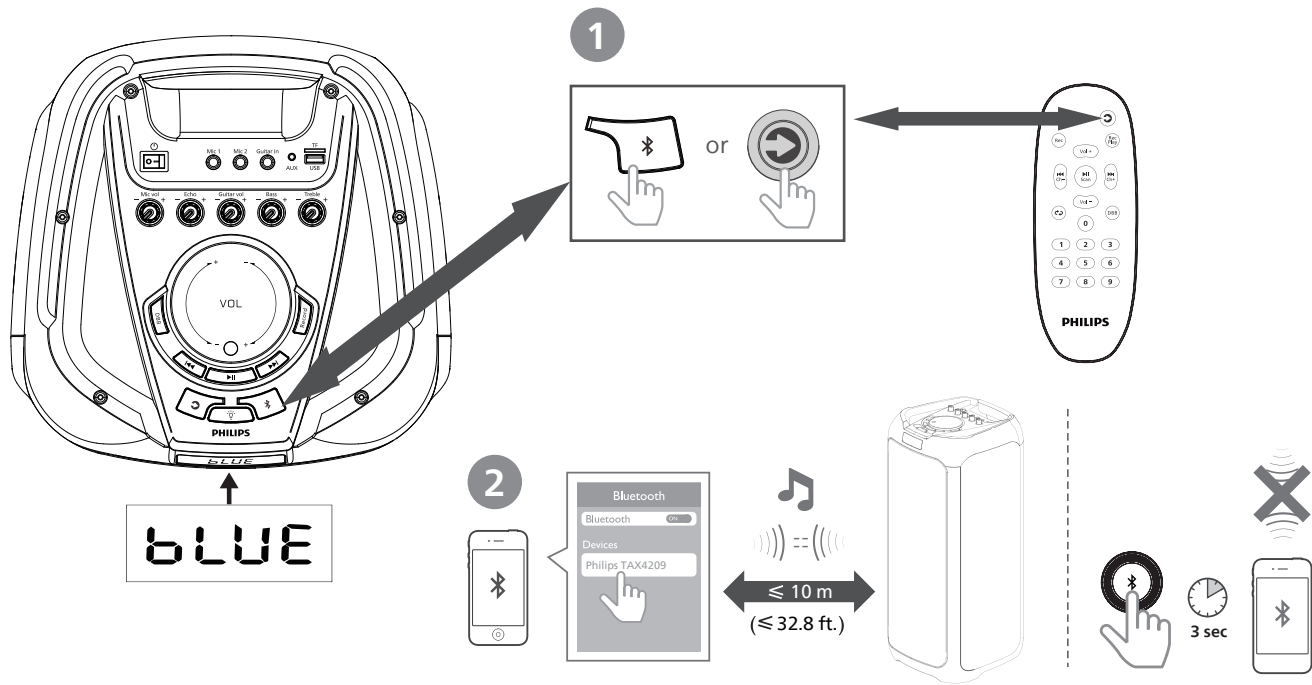


BT	BLUE
FM	87.5
AUX	AUX
USB	USB
TF	TF

3



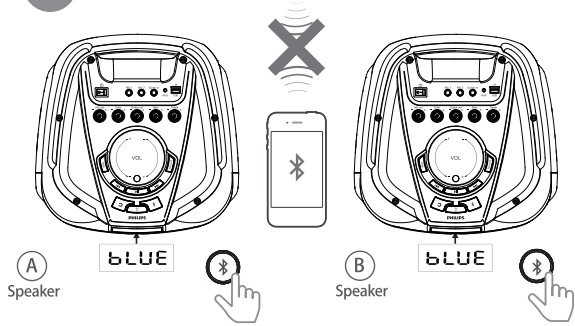
4



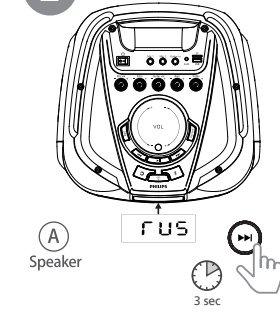
5



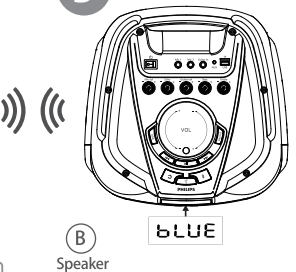
1



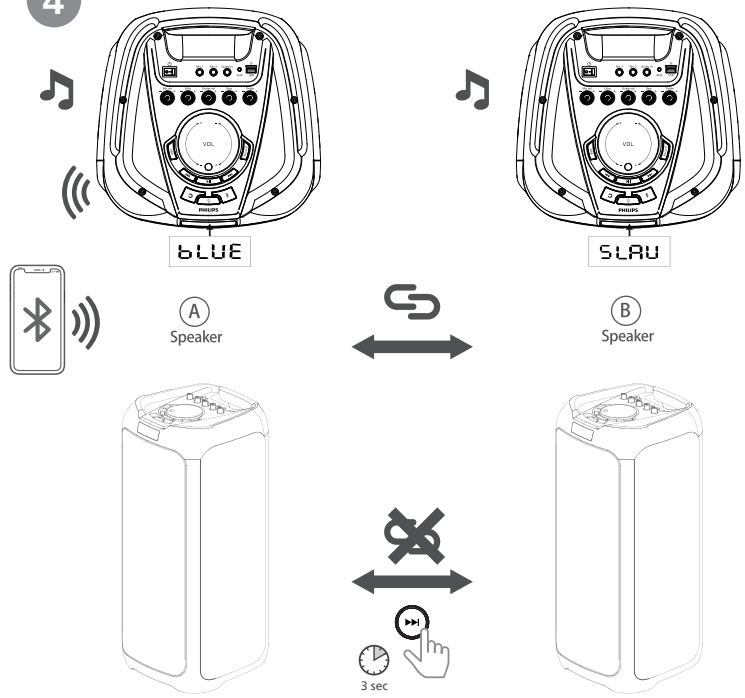
2



3

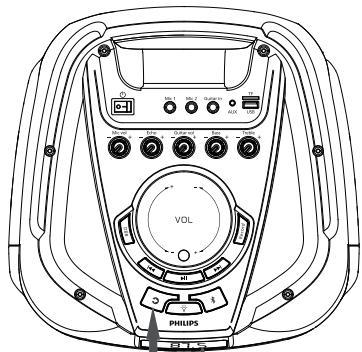


4



Note: Before connecting, you need to disconnect the Bluetooth of your mobile phone.

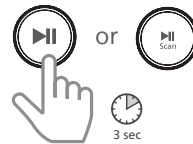
6



FM mode(87.5-108.0MHz)

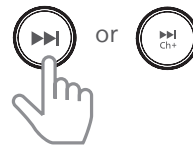


2 Automatically scan

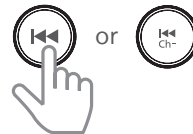


Scan channel automatically

3 Select preset channel

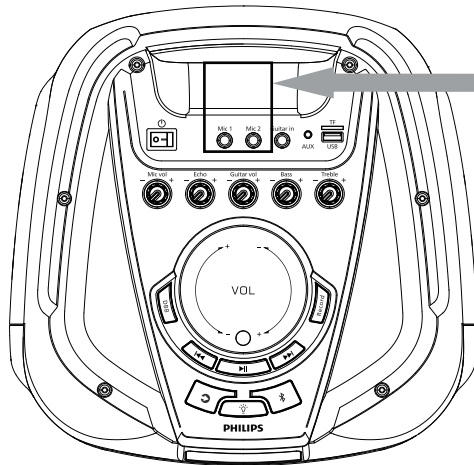


Select next channel

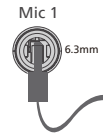


Select previous channel

9



1



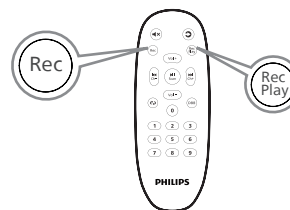
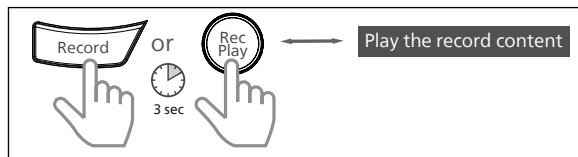
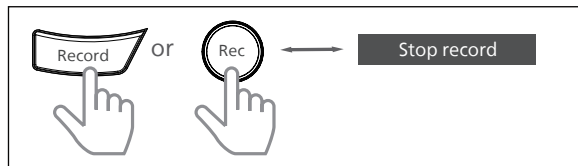
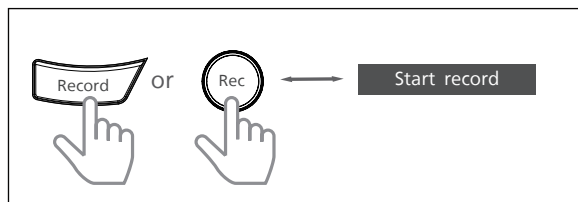
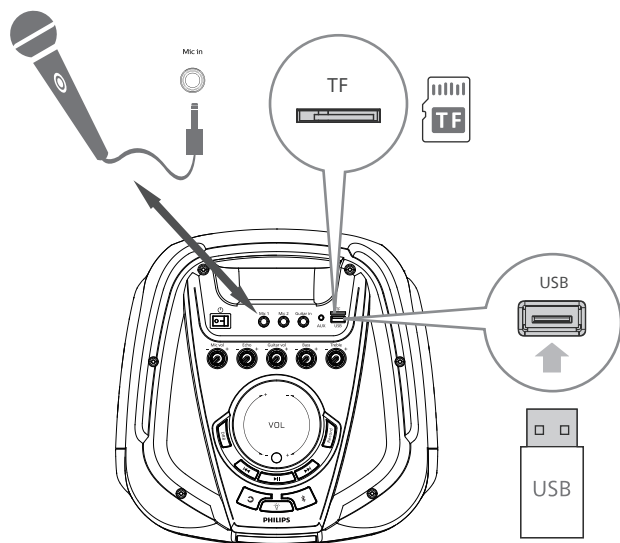
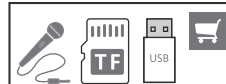
2



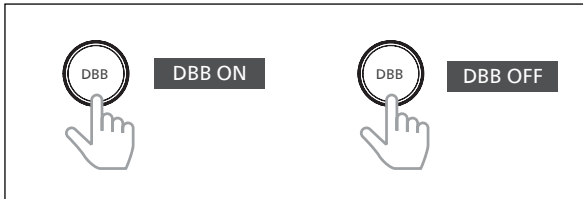
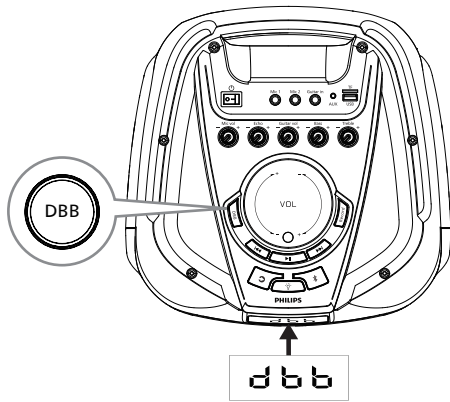
3



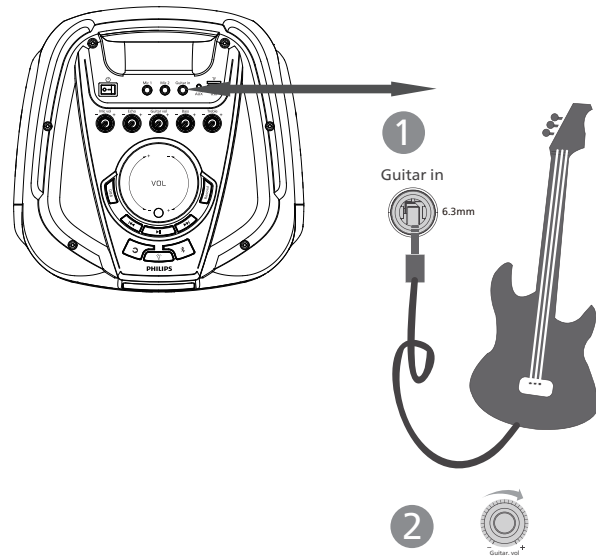
10



11



12





EN For more information about using this product, visit www.philips.com/support

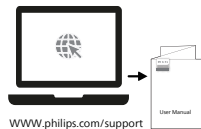
ES Para obtener más información sobre el uso de este producto, visite www.philips.com/support

FR Pour plus d'informations sur l'utilisation de ce produit, visitez www.philips.com/support

PT Para obter mais informações sobre a utilização deste produto, visite www.philips.com/support.



The Bluetooth® word mark and logos are registered trademarks owned by Bluetooth SIG, Inc. and any use of such marks by MMD Hong Kong Holding Limited is under license. Other trademarks and trade names are those of their respective owners.





18225-23-12451

Este equipamento não tem direito à proteção contra interferência prejudicial e não pode causar interferência em sistemas devidamente autorizados. Para maiores informações, consulte a site da ANATEL: www.anatel.gov.br

Specifications are subject to change without notice. Please visit www.Philips.com/support for the latest updates and documents.

Philips and the Philips Shield Emblem are registered trademarks of Koninklijke Philips N.V. and are used under license.

This product has been manufactured by and is sold under the responsibility of MMD Hong Kong Holding Limited or one of its affiliates, and MMD Hong Kong Holding Limited is the warrantor in relation to this product.

TAX4209_QSG_V1.0

