

D630  
D650



## Short user manual

**PHILIPS**

# ! Important safety instructions

### Warning

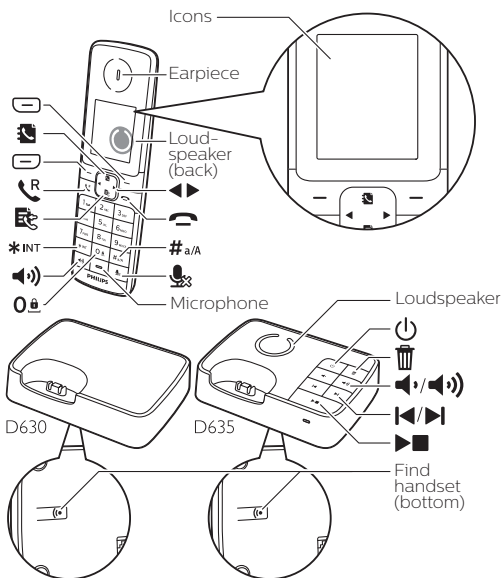
- The electrical network is rated as dangerous. The only way to turn off the charger is to unplug the power at the outlet. You must therefore ensure that the electrical outlet is always easily accessible.
- Refer to the safety information before using the product.
- This product complies with European directive RED2014/53/EU.
- Use only the power supply type listed in the user instructions.
- Use only the battery type listed in the user instructions.
- Do not allow the product to come into contact with liquids.
- Risk of explosion if an incorrect battery type is inserted in the device.
- Dispose of used batteries according to the instructions.
- When the handset rings or when the handsfree is activated, keep the handset away from your ear to avoid hearing damage.

### When using the phone as a baby monitor

- Ensure that children do not play with the appliance.

- Make sure the baby unit and the cord are always out of reach of the baby (at least 1 meter).
- Keep the parent unit at least 1.5 meters from the baby unit to prevent acoustic feedback.
- Never place the baby unit inside the baby's bed or playpen.
- Never cover the parent unit and the baby unit with anything (e.g. a towel or blanket). Always make sure the cooling vents of the baby unit are free.
- This appliance is not intended for use by persons (including children) with reduced physical, sensory or mental capabilities, or lack of experience and knowledge, unless they have been given supervision or instruction concerning use of the appliance by a person responsible for their safety.
- If you place the parent unit next to a transmitter or other DECT appliance (e.g. a DECT telephone or wireless router for the internet), the connection with the baby unit may be lost. Move the baby monitor further away from the other wireless appliances until the connection is restored.
- This baby monitor is intended as an aid. It is not a substitute for responsible and proper adult supervision and should not be used as such.

## 1 Overview



### During a call

- ☰ Phonebook / redial list
- 🔊 Change the sound profile.
- 🔊 Adjust the volume.
- 📞 Recall (network dependent).
- 📞 End calls.
- # a/A Enter a pause (press and hold the key).
- 🔊 Mute/unmute the loudspeaker.
- 🔊 Mute/unmute the microphone.

### In menu

- ☰ Confirm / Select / Enter the option menu.
- ☰ Cancel / Back
- ⬆️ Up / Down
- 📞 Exit menu.

### Standby

- ☰ Access the main menu.
- ☰ Access the redial list.
- 📞 Phonebook
- 📞 Call log
- 📞 Make and answer calls.
- 📞 Switch the handset on or off (press and hold the key).
- \* INT Make an intercom call (press and hold the key).
- 0 # Lock/unlock the keypad (press and hold the key).
- 🔊 Make and receive calls through the loudspeaker.
- 🔊 D635 only : Press to play a new message recorded in the answering machine / Access to the answering machine menu.

### In text input

- ☰ Delete text.
- 0 # Enter a space.
- # a/A Switch upper/lower case (press and hold the key).
- ⬅️ Left / Right

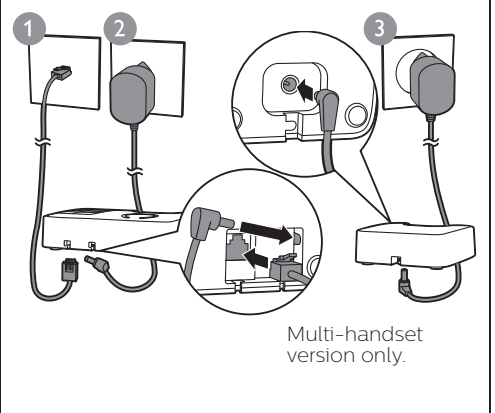
### Main menu icons

- 🕒 Alarm
- 📞 Phonebook
- ☰ Services
- 🔊 Sounds
- ⚙️ Settings
- 📞 Baby monitor
- 🔇 Privacy mode
- 📞 Answering machine (D635 only)
- 📞 Incoming calls (D630 only)

### Icons

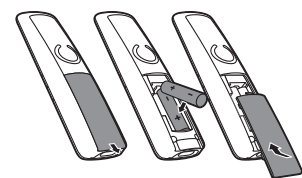
- 📶 It shows the connection status between the handset and base station. The more bars are shown, the better the signal strength is.
- 📞 It flashes when there is a new missed call. It remains steadily on when browsing unread missed calls in call log, or when browsing the read missed calls in call log.
- 📞 It remains steadily on when browsing blocked calls in the call log.
- 📞 It flashes when there is an incoming mobile number call.
- 🏠 It flashes when there is an incoming home number call.
- 📞 It flashes when there is an incoming mobile number call.
- 🔊 The loudspeaker is on.
- 🔇 The ringer is off. The silent mode is set and within active period (the phone does not ring).
- 🔇 The silent mode is set, but is outside of active period.
- 🕒 Activated alarm.
- 📞 D635 only : Answering machine: this symbol flashes when there is a new message or when the memory is full. It is displayed when the answering machine is turned on.
- 📞 Voice message indicator: it flashes for new messages, it is steady for reviewed messages.  
\* This is network dependent.
- ECO The ECO mode is activated.
- ECO+ The ECO+ mode is activated.

## 2 Connection



## 3 Get started

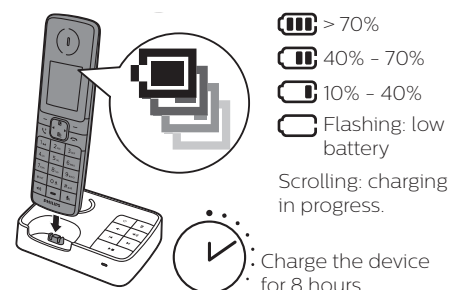
### Inserting the batteries



### Phone setup

- 1 When using your phone for the first time, you see a welcome message (country dependent).
- 2 Set the country and language if prompted.
- 3 Set the date and time.
  - If the time is in 12-hour format, press 📞 / 📞 key to select [am] or [pm] (country dependent).

### Charge your phone



## 4 Operation

### Phonebook

#### Add record

- 1 Press
- 2 Select **[Option]** > **[Add new]**.
- 3 Follow on-screen instructions.

#### Call from the phonebook

- 1 Press
- 2 Select a record and press

#### Direct access memory

You have up to 9 direct access memories (keys 1 to 9). To dial the saved phone number automatically, press and hold on the keys in standby mode. Depending on your country, keys 1 and 2 are preset to the voice mail number and information service number of your service provider respectively (network dependent).

### Call log

#### Call from the call log

- 1 Press
- 2 Select a record and press

#### View record

Press > **[Incoming calls]** (D635 only) > **[Option]** > **[View]**.

#### Save record

- 1 Press > **[Incoming calls]** (D635 only) > **[Option]** > **[Save number]**.
- 2 Follow on-screen instructions.

#### Delete record

- 1 Press > **[Incoming calls]** (D635 only) > **[Option]** > **[Delete]**.
- 2 Follow on-screen instructions.

### Redial list

#### Call from the redial list.

- 1 Press **[Redial]**.
- 2 Select a record and press

#### Save record

- 1 Press **[Redial]** > **[Option]** > **[Save number]**.
- 2 Follow on-screen instructions.

#### Delete record

- 1 Press **[Redial]** > **[Option]** > **[Delete]**.
- 2 Follow on-screen instructions.

### Record an announcement (for D635 only)

- 1 Press **[Menu]**.
- 2 Press to select > **[Announcement]**.
- 3 Follow on-screen instructions.

### Register additional handsets

You can register additional handsets to the base station.

- 1 Press **[Menu]**.

- 2 Press to select **[Register]**.
- 3 Press and hold key on the base station for 10 seconds.
- 4 Enter the system PIN/Passcode (0000).
- 5 Press **[OK]** to confirm PIN/Passcode.
  - ↳ Registration is complete in less than 2 minutes.

### Restore default settings

You can reset your phone settings to the original factory settings.

- 1 Press **[Menu]**.
- 2 Press to select **[Reset]**.
- 3 Follow on-screen instructions.

#### Note

- You can recover the initial PIN/Passcode by following this procedure.

## Technical data

### Battery

Philips: 2 x AAA NiMH 1.2 V Rechargeable 650 mAh batteries.  
Use only the supplied batteries.

### Adapter (base and charger)

Tenpaoc: S003GV0600050  
Input: 100-240 V~, 50/60 Hz 150 mA  
Output: 6 Vdc, 500mA

Phonebook: 100 entries

Call log: 50 entries

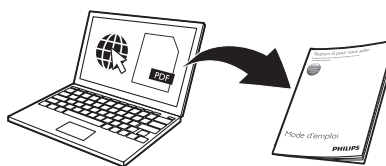
Talk time: 18 hours,

Standby time: 250 hours,

#### Note

- You can install a DSL (digital subscriber line) filter to prevent noise and caller ID problems caused by the DSL interference.
- You can find the Declaration of Conformity on [www.p4c.philips.com](http://www.p4c.philips.com).

### i



[www.philips.com/support](http://www.philips.com/support)

To access the user instructions online, use the reference model number written on the product label at the bottom of the base station.

## 5 Learn more

### Silent mode

You can enable the silent mode for a specified duration.

> **[Silent mode]**

### Sound profile

Allows you to customize the sound of voices to your liking.

> **[Sound profile]**

### Eco mode

Reduces power consumption / transmission power; reduces radiation and range by approximately 60%.

> **[Eco mode]**

### Eco+ mode

Eliminates radiation in standby mode (2 seconds ring delay, 50% shorter standby time).

> **[Eco+ mode]**

### Privacy mode

Blocks incoming calls / block outgoing calls.

> **[Call barring]/[Call block]**

## Frequently Asked Question

### No signal bar is displayed on the screen.

- The handset is out of range. Move it closer to the base station.
- If the handset displays **[Register your Handset]**, register your handset. (See the section on "Register additional handsets").

### If I fail to pair (register) the additional handsets to the base station, what do I do?

- Your base memory is full. Access > > **[Unregister]** to unregister the unused handsets and try again.
- If registration fails, unplug the power adapter from the base station and plug it back. Wait for 15 seconds, and then repeat the registration procedure.

### I have chosen a wrong language which I cannot read, what do I do?

- 1 Press to go back to the standby screen.
- 2 Press to access the main menu screen.
- 3 Press to select . Then you see one of the following texts appear on the screen:

|                   |                 |                  |
|-------------------|-----------------|------------------|
| <b>[Language]</b> | <b>[Langue]</b> | <b>[Sprache]</b> |
| <b>[Lingua]</b>   | <b>[Dil]</b>    |                  |

- 4 Select them to access the language options.
- 5 Select your own language.

### My handset is in searching or unavailable status, what do I do?

- Make sure that the base station has power supply.
- Register the handset to the base station.
- Move the handset closer to the base station.

### I cannot change the settings of my voice mail. What do I do?

The voice mail service is managed by your service provider but not the phone itself. Contact your service provider to change the settings.

### No display

- Make sure the batteries are charged.
- Make sure there are power and phone connections.

### The handset on the charger does not charge.

- Make sure the batteries are inserted correctly.
- Make sure the handset is placed properly on the charger. The battery icon animates when charging.
- Make sure the docking tone setting is turned on. When the handset is placed correctly on the charger, you can hear a docking tone.
- The charging contacts are dirty. Disconnect the power supply first and clean the contacts with a damp cloth.
- Batteries are defective. Purchase new ones with the same specifications.

### Bad audio (crackles, echo, etc.)

- The handset is almost out of range. Move it closer to the base station.
- The phone receives interference from the nearby electrical appliances. Move the base station away.
- The walls are too thick. Move the base station away.

### The handset does not ring.

Make sure the handset ringtone is turned on.

### The caller ID does not display.

- The service is not activated. Check with your service provider.
- The caller's information is withheld or unavailable.

This symbol on a product indicates that the device is compliant with the European Directive 2012/19/EU.

2019 © MMD Hong Kong Holding Limited  
All rights reserved.

This product has been manufactured by and is sold under the responsibility of **MMD Hong Kong Holding Limited**. MMD Hong Kong Holding Limited is the warrantor in relation to this product.

Philips and the Philips Shield Emblem are registered trademarks of Koninklijke Philips N.V. and are used under license from Koninklijke Philips N.V.



UMS\_D630/635  
38\_FR\_V1.0