

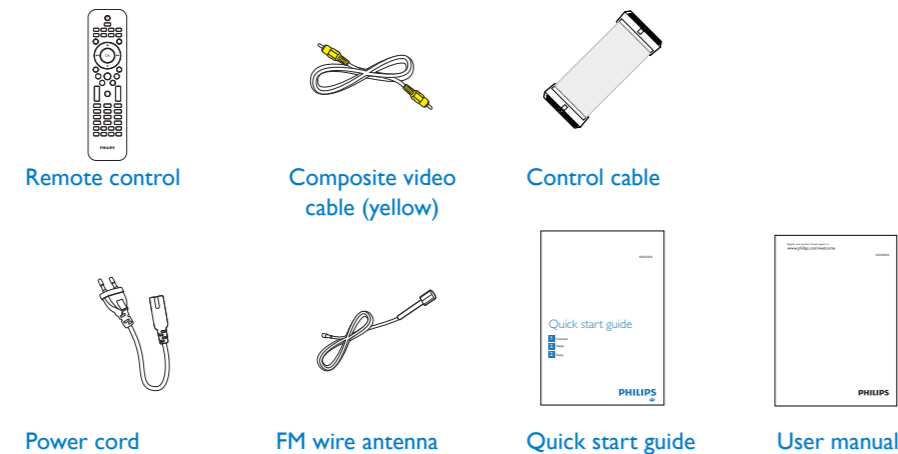


Quick start guide

- 1 Connect
- 2 Setup
- 3 Enjoy

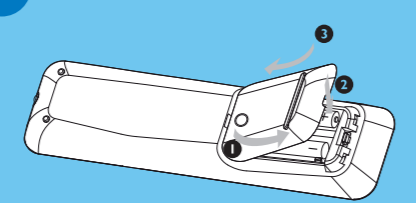


What's in the box



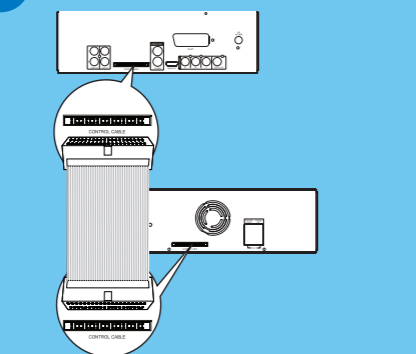
1 Connect

A Install remote control batteries



- 1 Open the battery compartment.
- 2 Insert 2 AAA batteries with correct polarity (+/-) as indicated.
- 3 Close the battery compartment.

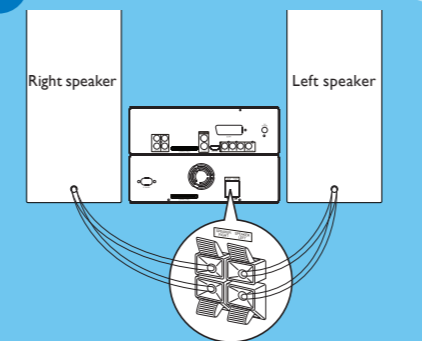
B Connect control cable



- 1 Connect the supplied control cable to the **CONTROL CABLE** jacks on the main unit.

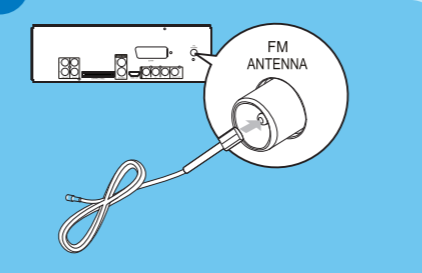
1 Connect

C Connect speakers



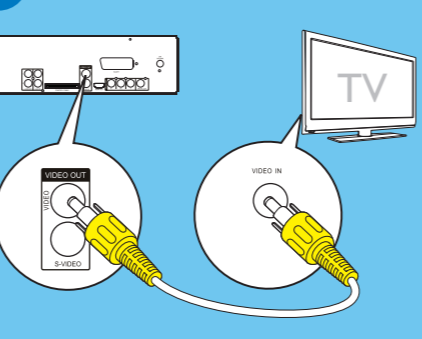
- Note**
- Ensure that the colors of the speaker wires and terminals are matched.
- 1 Hold down the socket flap.
 - 2 Insert the stripped part of the wire completely.
 - 3 Release the socket flap.
- Insert the right speaker wires to **"SPEAKER RIGHT"**, left speaker wires to **"SPEAKER LEFT"**.

D Connect FM antenna



- 1 Connect the supplied FM wire antenna to the **FM ANTENNA** socket on the unit.

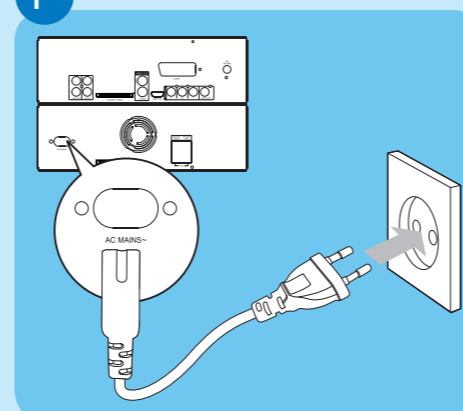
E Connect TV



- 1 Connect the supplied composite video cable to:
 - the **VIDEO** socket on this unit.
 - the video input socket on the TV.

1 Connect

F Connect power



- 1 Connect the power cord to the **AC MAINS~** jack on the main unit.
- 2 Connect the power plug to the wall outlet.

! Caution

- Risk of product damage! Ensure that the power supply voltage corresponds to the voltage printed on the back or the underside of the unit.
- Risk of electric shock! When you unplug the AC power cord, always pull the plug from the socket. Never pull the cord.
- Before connecting the AC power cord, ensure you have completed all other connections.

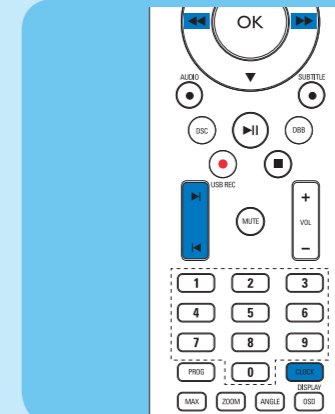
* Tip

- See the User Manual for how to connect other devices to this system.

2 Setup

A Set the clock

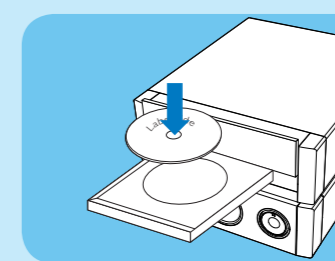
- 1 In standby mode, press **CLOCK** to activate the clock setting mode.
 - ↳ The time digits are displayed and begin to blink.
 - ↳ If the time digits are not displayed, press and hold **OK** for more than 2 seconds to switch to standby mode, then repeat step 1.
- 2 Press **1** to set the hour.
- 3 Press **2** to set the minute.
- 4 Press and hold **CLOCK** to select 12-hour or 24-hour format.
- 5 Press **CLOCK** to confirm.



3 Enjoy

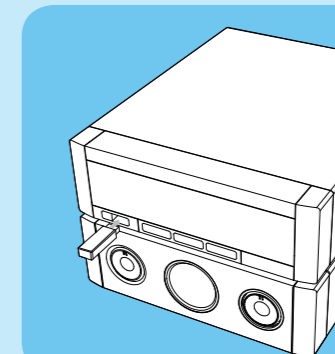
A Play disc

- 1 Press **DISC** to select the disc source.
- 2 Press **▲** to open the disc compartment.
- 3 Insert a disc with the printed side facing up, then close the disc compartment.
 - ↳ Play starts automatically.
 - To pause/resume play, press **▶||**.
 - To stop play, press **■**.



B Play from USB

- 1 Flip open the USB socket cover on the front panel.
- 2 Insert the USB plug of a USB device into the USB socket.
- 3 Press **USB** to select the USB source.
 - ↳ Play starts automatically.
 - To pause/resume play, press **▶||**.
 - To stop play, press **■**.



3 Enjoy

C Program and tune to radio stations

- Tip**
- For optimal reception, fully extend and adjust the position of the FM antenna.

First time tuning
When you access to radio mode for the first time, follow the instructions to install the radio stations.

- 1 Press **TUNER**.
 - ↳ 'AUTO INSTALL ... PRESS PLAY' is displayed.
- 2 Press **▶||**.
 - ↳ All detected radio stations are stored.
 - ↳ Once complete, it tunes to the first preset radio station.
 - To stop auto tuning, press **■**.

Reinstall and listen to radio stations

- 1 Press **TUNER** to select the tuner source.
- 2 Press and hold **PROG** for more than 2 seconds to activate automatic program mode.
 - ↳ All available stations are programmed in the order of waveband reception strength.
- 3 Press **1** to select a preset number.

* Tip

- Detailed features and additional functions are described in the user manual.

