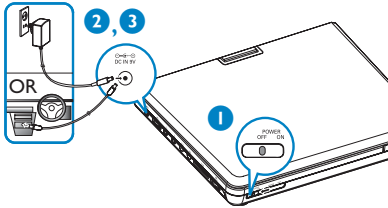


Quick start guide

1 Charge your battery

This portable DVD player is designed with a built-in lithium battery to supply power to the player when you are on travel.

- Slide the **POWER** switch to the **OFF** position (charging of the DVD player only possible in the power-off mode).
- Connect the supplied power adaptor cord (or the car adaptor) to the player and AC mains (or the car cigarette lighter outlet) to start charging.
→ The **CHG** indicator turns green.
→ When the battery is fully charged, the indicator turns off.
- Disconnect the power adaptor cord (or the car adaptor) when the CHG indicator turns off.

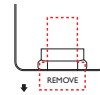
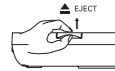


Notes:

– You can also connect the supplied power adaptor cord (or the car adaptor) to the player and AC mains (or the car cigarette lighter outlet) directly wherever possible.
– Before using the DVD player for the first time, make sure to charge the battery for 8 hours at least.

2 Prepare your remote control

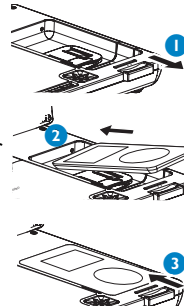
- Lift up the handle marked **▲ EJECT** to take out the remote control.
- Remove the protective plastic tab (first time users only).
→ Your remote control is now ready for use.



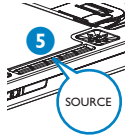
3 Enjoy (iPod with video)

Connecting and using your iPod player

- Pull out the iPod connector.
- Dock your iPod player with the **top entering first as shown**.
- Push in the iPod connector.
- Switch on your iPod player to set "TV OUT" to "ON" and select the "PAL" mode. (See your iPod user's manual for detailed operation.)



- Press the **SOURCE** key repeatedly (or **iPod** on the remote) for dock input.

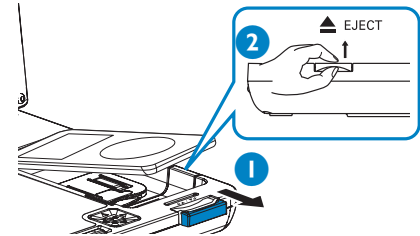


- Play files in your iPod player.

- To recharge your iPod player, you must connect your DVD player to AC mains (or the car cigarette lighter outlet) and ensure: Your DVD player is in the power-off mode.
OR
The DVD player is in the power-on mode and the current source is "iPod".

To remove the iPod player

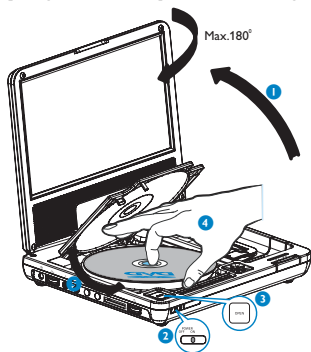
- Pull out the iPod connector.
- Lift up the handle marked **▲ EJECT** to release.



Notes:

– This DVD player only supports 30G, 60G and 80G iPod player with video.
– Please take out the tab marked "for 30G iPod" in the dock if you want to dock a 60G or 80G iPod player.
– You need to press **▶** on your iPod player in order to start photo playback through this DVD player.

3 Enjoy (Disc operation)



- 1 Open the lid of the player and adjust the swivel screen clockwise to your preferred viewing angle.
- 2 Slide the **POWER** switch to **ON** to switch on the DVD player.
→ The **POWER** indicator turns on.
- 3 Press **OPEN** to open the disc door.
- 4 Remove the protective card (if any) and load a disc with the label side facing up.
- 5 Close the disc door. Playback will start automatically. If not, press **▶|L**.
- 6 To stop playback, press **■** on the remote control.

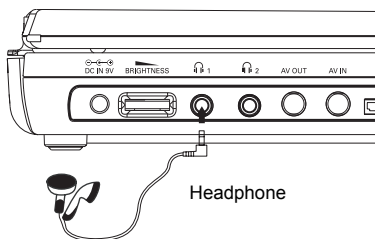
Note:

– Once the battery is running low (the power indicator will flash as a prior warning), immediately recharge it (regardless of whether you plan to use the battery or not) in order to maximize the battery life.

3 Enjoy (Other options)

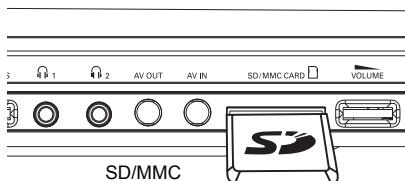
Connecting headphones (not included)

- To enjoy your portable DVD player without disturbing others, you can connect one or more headphones to the **🎧 1** or (and) **🎧 2** jack on the set.



Connecting an SD/MMC card

- 1 Insert an SD/MMC card into the **SD/MMC CARD** slot with the metal contact facing down.
- 2 On the DVD player panel, press the source key repeatedly (or **SD/MMC CARD** on the remote) to select the SD/MMC source.
- 3 Play video or audio files stored in the card by selecting the desired file with **▲ ▼** and **OK**.



Connecting additional equipment (TV for example)

- 1 Connect the AV OUT socket on the set to the video and audio sockets on a TV as shown directly.
- 2 Switch on the TV and set to the correct video-in channel.
→ You can consult the owner's manual of your TV. (If your TV does not have Audio and Video inputs, you will need to purchase a RF modulator. Please consult your dealer.)

Note:

– When connecting a device to the AV IN socket on the DVD player, you need to press the source key repeatedly on the front panel (or AV on the remote) to select AV IN (AUX).

