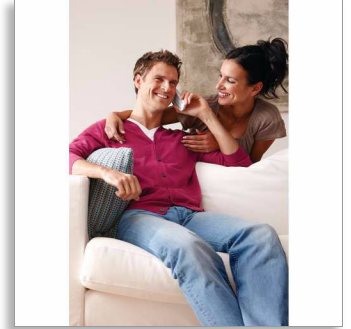


Philips BeNear
Cordless phone

2000-series

2.0" display/ amber backlight
Speakerphone
3 handsets



CD2903W

Bringing people closer

Superior sound, large display

Technology should be simple. And that is why we have designed this phone to not only produce outstanding sound, but offer a large display and backlit keypad. Enjoy the superior performance of HQ-Sound, in a whole user-friendly way.

Exceptional sound

- HQ-Sound: high quality acoustic engineering for superb sound
- MySound profiles to match your sound preference
- Acoustic echo cancellation keeps your conversation echo-free
- Optimized antenna layout for great reception in any room
- Handset speakerphone allows you to talk handsfree

As convenient as it should be

- Large, 5.1 cm (2.0") dot-matrix display
- Save up to 100 favorite contacts in your phonebook
- Keypad backlight for fast access even in dark room
- Up to 17 hours of talk time

Eco-conscious product

- 60% reduction of radiation when ECO mode is activated
- Low power consumption: < 0,6W in stand-by mode



asimpleswitch.com

PHILIPS

Cordless phone
2000-series 2.0" display/ amber backlight, Speakerphone, 3 handsets

CD2903W/90

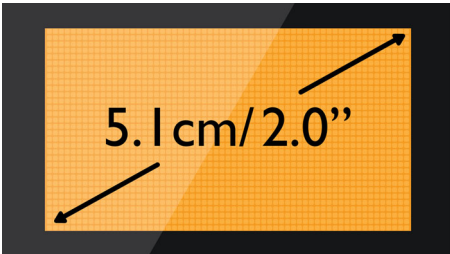
Highlights

100-name phone book



Always have the phone numbers of your loved ones available: Save up to 100 names in your phonebook.

5.1cm (2.0")dot-matrix display



Large, 5.1 cm (2.0") dot-matrix display

Acoustic echo cancellation

No more of those annoying echoes when you are talking on the phone. With our acoustic echo cancellation, you always get a clear, undisturbed connection.

ECO mode



60% reduction of radiation when ECO mode is activated

Handset speakerphone



Handsfree mode uses a built-in loud speaker to amplify the voice of the caller, allowing you to speak and listen during a call without holding the phone to your ear. This is especially useful if you want to share the call with others or simply multitask.

HQ-Sound



Philips cordless phones with HQ-Sound: build upon decades of experience and breakthrough innovations in developing Hi-Fi audio products and high-end headphones to deliver excellent voice clarity on our DECT phones. When it comes to improving sound quality, our acoustics engineers and architects have thought of everything – high quality components, digital signal processing, precise acoustic design, advanced testing and fine-tuning. The result is sound that is crisp, clear and authentic. Sound so good and natural, it is almost like being there in person.

Keypad backlight

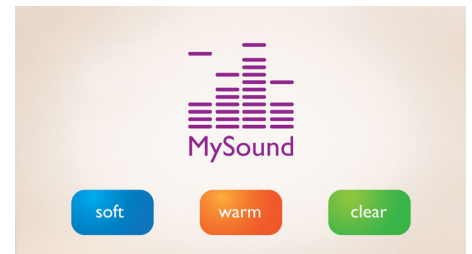
Keypad backlight for fast access even in dark room

Low power consumption: < 0.6 W



Philips phones are energy efficient and are designed to be respectful to the environment. Now the power consumed in stand-by mode is less than < 0.6 W.

MySound profiles



Sound perception is subjective, and everyone has their own listening preference. MySound brings personality back to every conversation by allowing you to choose the audio profile that best matches your sound preferences: Clear – to make voices sound crisper and clearer; Soft – for friendly, softer tones; Warm – to make voices sound welcoming and warm.

Philips Green Logo

Philips Green Products can reduce costs, energy consumption and CO2 emissions. How? They offer a significant environmental improvement in one or more of the Philips Green Focal Areas – Energy efficiency, Packaging, Hazardous substances, Weight, Recycling and disposal and Lifetime reliability.

Specifications

Sound

- HQ-Sound
- Sound Profile: MySound
- Volume control on handset
- Ringtones on handset: 10 polyphonic

Picture/Display

- Display size: 5.1cm / 2.0"
- Display type: FSTN - dot matrix
- Backlight: Yes
- Backlight color: Soft Amber

Convenience

- Menu structure in the handset: List Menu
- Speakerphone - talk handsfree
- Personalization: Silence mode and Night mode
- Signal strength indicator: 3- bar indicator
- Battery level indicator: 3- bar battery icon
- Intercom - multiple handsets
- Date / Time display
- Alarm Clock
- Battery charge indication
- Programmable hot keys: Key 1 and 2
- Call Management: Call Waiting*, Caller ID*, Microphone mute, Missed Calls, Received Calls
- Key tone on/off
- Auto Registration
- Auto hang up
- Multi base capability: 1
- Multi handset capability: Up to 4
- Number of keys: 20
- Backlit keypad: Soft Amber
- Enlarge dialing digit
- Base Station keys: Paging key
- Up to 17 hrs talk time
- Up to 250 hrs standby time
- Charge time: 8 hours

- Line cord length: 1.8m
- Power cord length: 1.8m
- Range: Open field <300m; in door <50m

Memory Capacity

- Phonebook: 100 names and numbers
- Redial List Capacity: 20 entries
- Call log entries: 50 entries
- Phonebook store in the base

Power

- Battery capacity: 600 mAh
- Battery type: AAA NiMH Rechargeable
- Mains power: AC 100-240V ~50/60Hz

Security

- Transmission encryption : Yes

Network Features

- Compatible: GAP

SAR Value

- Philips handsets: <0.1 W/kg

Eco Design

- EcoMode: automatic & manual

Packaging dimensions

- Packaging dimensions (W x H x D):
25 x 13.6 x 11.6 cm
- EAN: 87 12581 64219 8
- Gross weight: 1.21 kg
- Nett weight: 0.965 kg
- Number of products included: 1
- Packaging type: Carton
- Tare weight: 0.245 kg



Issue date 2015-02-11

Version: 5.0.1

12 NC: 8670 000 89355
EAN: 87 12581 64219 8

© 2015 Koninklijke Philips N.V.
All Rights reserved.

Specifications are subject to change without notice.
Trademarks are the property of Koninklijke Philips N.V.
or their respective owners.

www.philips.com