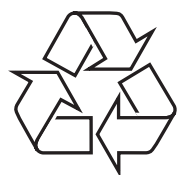




© 2010 Koninklijke Philips Electronics N.V.

All rights reserved.

PD7005_12_UM_ATA_V1.0



Register your product and get support at
www.philips.com/welcome

PD7005



EN User manual

DA Brugervejledning

DE Benutzerhandbuch

ES Manual del usuario

FR Mode d'emploi

IT Manuale utente

NL Gebruiksaanwijzing

SV Användarhandbok

CS Příručka pro uživatele

HU Felhasználói kézikönyv

SK Príručka užívateľa

PHILIPS

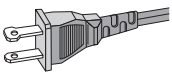
Contents

1	Important	4
	Important Safety Instructions	4
	Notice	7
<hr/>		
2	Your portable DVD player	10
	Introduction	10
	What's in the box	10
	Overview of the main unit	11
	Overview of remote control	13
<hr/>		
3	Get started	15
	Preparation	16
	Charge the battery	16
	Install remote control battery	17
	Connect additional equipment	18
<hr/>		
4	Play	19
	Turn on	19
	Select OSD language	20
	Play discs	20
	Play options	20
<hr/>		
5	Watch TV	21
	First time settings	21
	Manual search	22
	Set time	22
	View program information	23
	Use the electronic program guide	24
	Rearrange the channel list	25
	Manage channels	25
<hr/>		
6	Adjust settings	25
<hr/>		
7	Product information	26
<hr/>		
8	Troubleshooting	27

1 Important

Important Safety Instructions

- ① Read these instructions.
- ② Keep these instructions.
- ③ Heed all warnings.
- ④ Follow all instructions.
- ⑤ Do not use this apparatus near water.
- ⑥ Clean only with dry cloth.
- ⑦ Do not block any ventilation openings. Install in accordance with the manufacturer's instructions.
- ⑧ Do not install near any heat sources such as radiators, heat registers, stoves, or other apparatus (including amplifiers) that produce heat.
- ⑨ For countries with a polarized mains, do not defeat the safety purpose of the polarized or grounding-type plug. A polarized plug has two blades with one wider than the other. A grounding type plug has two blades and a third grounding prong. The wide blade or the third prong are provided for your safety. If the provided plug does not fit into your outlet, consult an electrician for replacement of the obsolete outlet.
Caution: To prevent electric shock, match the wide blade of the plug to the wide slot, fully insert.



- ⑩ Protect the power cord from being walked on or pinched, particularly at plugs, convenience receptacles, and the point where they exit from the apparatus.
- ⑪ Only use attachments/accessories specified by the manufacturer.
- ⑫ Use only with the cart, stand, tripod, bracket, or table specified by the manufacturer or sold with the apparatus. When a cart is used, use caution when moving the cart/apparatus combination to avoid injury from tip-over.



- ⑬ Unplug this apparatus during lightning storms or when unused for long periods of time.
- ⑭ Refer all servicing to qualified service personnel. Servicing is required when the apparatus has been damaged in any way, such as power-supply cord or plug is damaged, liquid has been spilled or objects have fallen into the apparatus, the apparatus has been exposed to rain or moisture, does not operate normally, or has been dropped.
- ⑮ Batteries (battery pack or batteries installed) shall not be exposed to excessive heat such as sunshine, fire or the like.
- ⑯ Apparatus shall not be exposed to dripping or splashing.
- ⑰ Do not place any sources of danger on the apparatus (e.g. liquid filled objects, lighted candles).
- ⑱ Where the MAINS plug or an appliance coupler is used as the disconnect device, the disconnect device shall remain readily operable.



Warning

- Never remove the casing of this apparatus.
- Never lubricate any part of this apparatus.
- Never place this apparatus on other electrical equipment.
- Keep this apparatus away from direct sunlight, naked flames or heat.
- Never look into the laser beam inside this apparatus.
- Ensure that you always have easy access to the power cord, plug or adaptor to disconnect this apparatus from the power.

Hearing safety

Listen at a moderate volume.

- Using headphones at a high volume can impair your hearing. This product can produce sounds in decibel ranges that may cause hearing loss for a normal person, even for exposure less than a minute. The higher decibel ranges are offered for those that may have already experienced some hearing loss.
- Sound can be deceiving. Over time your hearing 'comfort level' adapts to higher volumes of sound. So after prolonged listening, what sounds 'normal' can actually be loud and harmful to your hearing. To guard against this, set your volume to a safe level before your hearing adapts and leave it there.

To establish a safe volume level:

- Set your volume control at a low setting.
- Slowly increase the sound until you can hear it comfortably and clearly, without distortion.

Listen for reasonable periods of time:

- Prolonged exposure to sound, even at normally 'safe' levels, can also cause hearing loss.
- Be sure to use your equipment reasonably and take appropriate breaks.

Be sure to observe the following guidelines when using your headphones.

- Listen at reasonable volumes for reasonable periods of time.
- Be careful not to adjust the volume as your hearing adapts.
- Do not turn up the volume so high that you can't hear what's around you.
- You should use caution or temporarily discontinue use in potentially hazardous situations. Do not use headphones while operating a motorized vehicle, cycling, skateboarding, etc.; it may create a traffic hazard and is illegal in many areas.



Caution

- Use of controls or adjustments or performance of procedures other than herein may result in hazardous radiation exposure or other unsafe operation.

Notice

Any changes or modifications made to this device that are not expressly approved by Philips Consumer Lifestyle may void the user's authority to operate the equipment.



This product complies with the radio interference requirements of the European Community.

Environmental information

All unnecessary packaging has been omitted. We have tried to make the packaging easy to separate into three materials: cardboard (box), polystyrene foam (buffer) and polyethylene (bags, protective foam sheet.) Your system consists of materials which can be recycled and reused if disassembled by a specialized company. Please observe the local regulations regarding the disposal of packaging materials, exhausted batteries and old equipment.

Recycling



Your product is designed and manufactured with high quality materials and components, which can be recycled and reused.

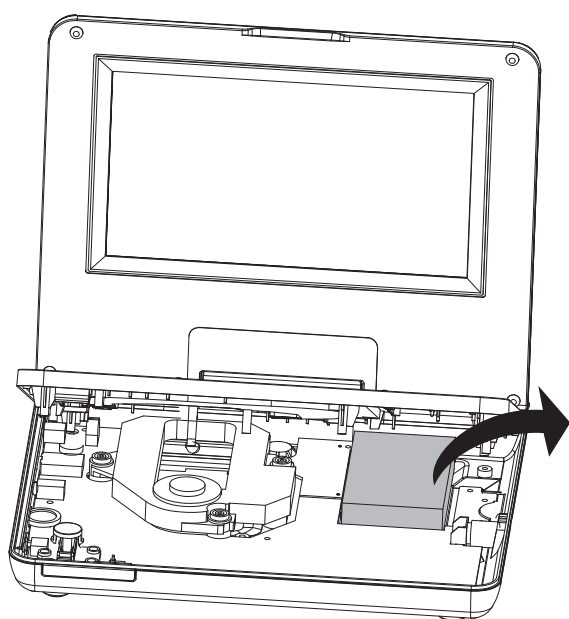
When you see the crossed-out wheel bin symbol attached to a product, it means the product is covered by the European Directive 2002/96/EC:



Never dispose of your product with other household waste. Please inform yourself about the local rules on the separate collection of electrical and electronic products. The correct disposal of your old product helps prevent potentially negative consequences on the environment and human health.

Your product contains batteries covered by the European Directive 2006/66/EC, which cannot be disposed of with normal household waste. Please inform yourself about the local rules on separate collection of batteries. The correct disposal of batteries helps prevent potentially negative consequences on the environment and human health.

Always bring your product to a professional to remove the built-in battery.



Be responsible
Respect copyrights

The making of unauthorized copies of copy-protected material, including computer programs, files, broadcasts and sound recordings, may be an infringement of copyrights and constitute a criminal offence. This equipment should not be used for such purposes.

Recording and playback of material might require consent. See Copyright Act 1956 and The Performer's Protection Acts 1958 to 1972.

This item incorporates copy protection technology that is protected by U.S. patents and other intellectual property rights of Rovi Corporation. Reverse engineering and disassembly are prohibited.



"DivX, DivX" Certified, and associated logos are trademarks of DivX, Inc. and are used under license.



Manufactured under license from Dolby Laboratories.

"Dolby" and the double-D symbol are trademarks of Dolby Laboratories.

This apparatus includes this label:



Norge

Typeskilt finnes på apparatens underside.

Observer: Nettbryteren er sekundært innkoplet. Den innebygde nettdelen er derfor ikke frakoplet nettet så lenge apparatet er tilsluttet nettkontakten.

For å redusere faren for brann eller elektrisk støt, skal apparatet ikke utsettes for regn eller fuktighet.

2 Your portable DVD player

Congratulations on your purchase, and welcome to Philips! To fully benefit from the support that Philips offers, register your product at www.philips.com/welcome.

Introduction

Your portable DVD player plays digital video discs that conform to the universal DVD Video standard. With it, you can play movies with true cinema picture quality and stereo or multi-channel sound (depending on disc and playback set-up).

You can also select sound track, subtitle languages, and different angle of view (again depending on DVD disc). Besides, you can restrict the play of discs that are not suitable for children.

You can play the following discs on the DVD player (including CD-R, CD-RW, DVD±R and DVD±RW):

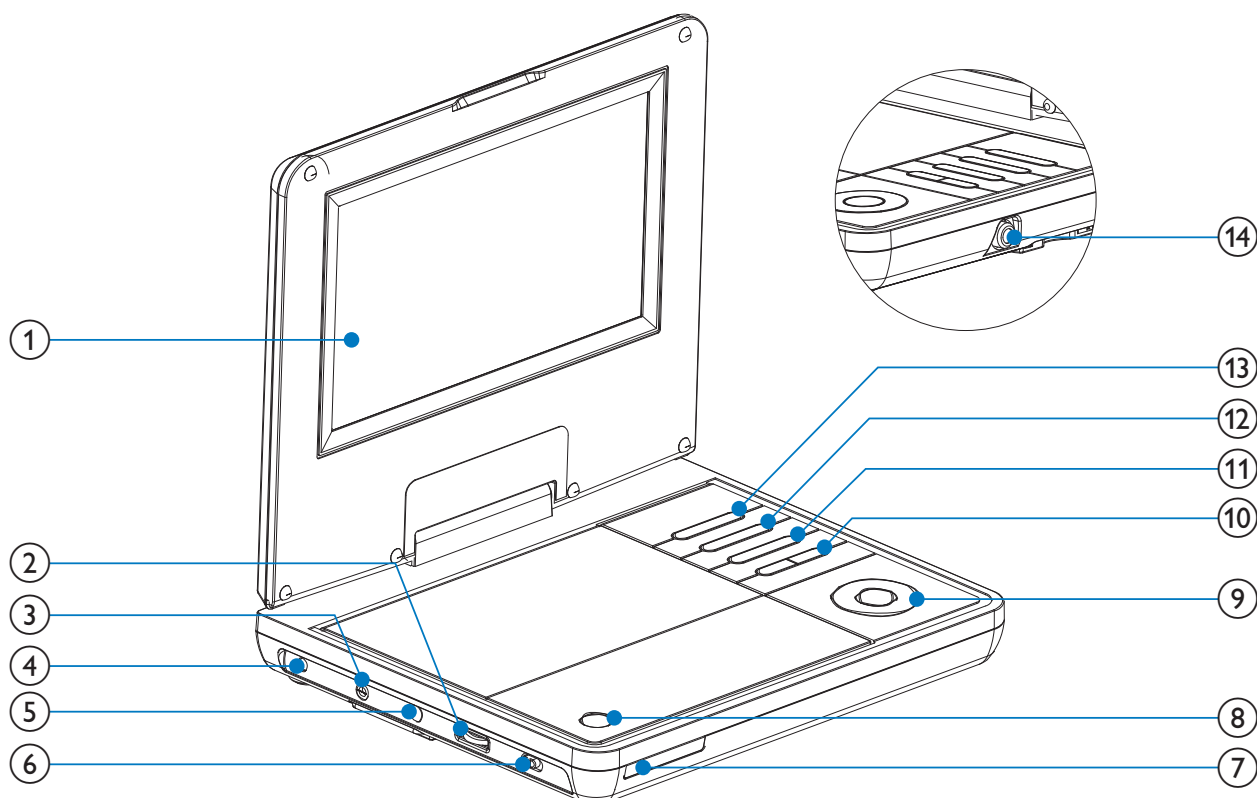
- DVD-Video
- Video CD
- Audio CD
- MP3 CD
- DivX
- Discs with JPEG files

What's in the box

Check and identify the contents of your package:

- Portable DVD player
- Remote control
- AC power adaptor, AY5808 (Philips)
- Car adaptor
- AV cable
- Antenna
- Mounting strap
- User manual
- Quick Start Guide

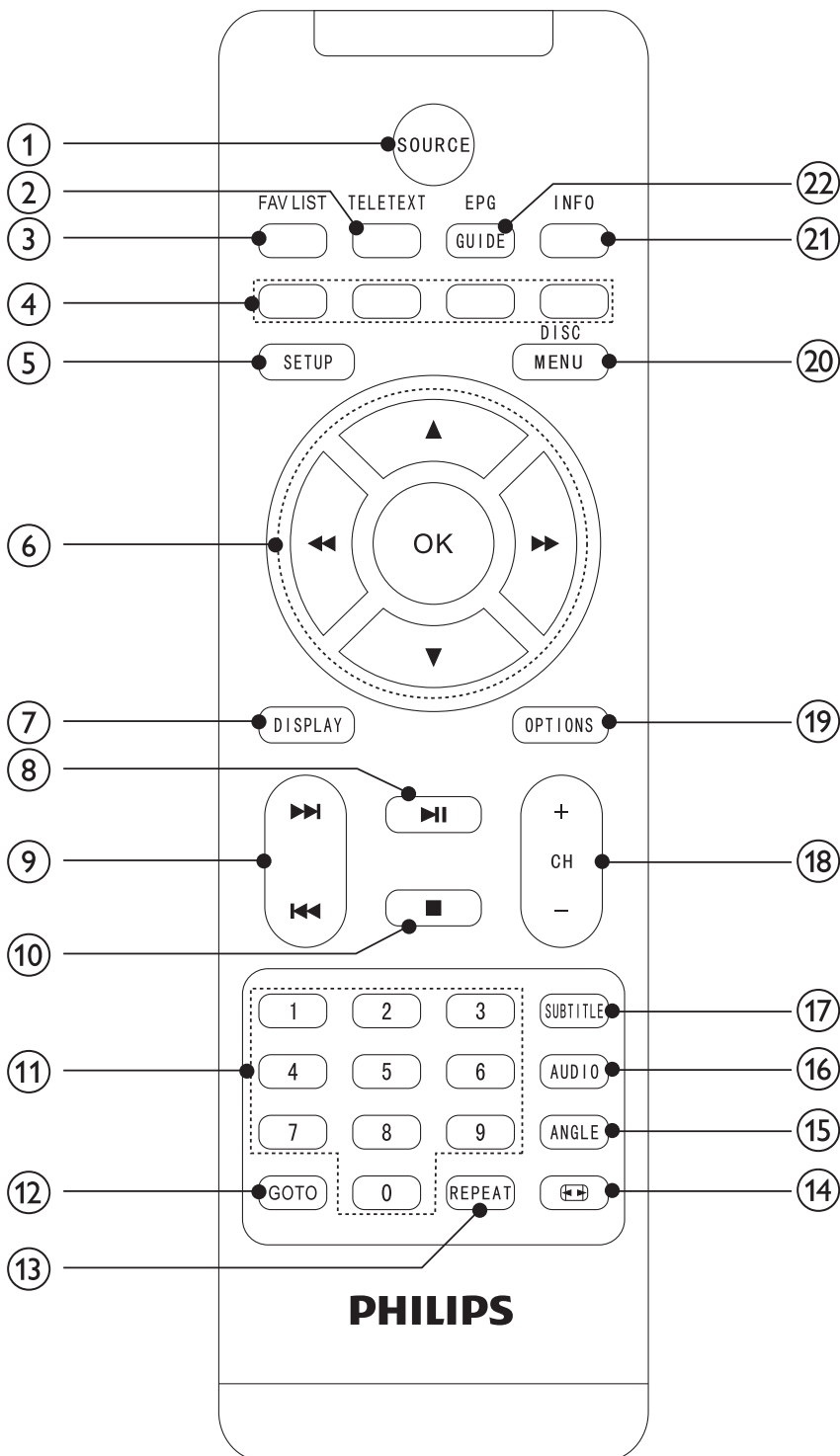
Overview of the main unit




- ① **Display panel**
- ② **+ VOL -**
 - Increases or decreases volume.
- ③ **Headphone jack.**
 - Headphone jack.
- ④ **DC IN**
 - Power supply socket.
- ⑤ **AV OUT**
 - Audio/video output jack.
- ⑥ **POWER ON/OFF (CHR)**
 - Turns on/off DVD player.
- ⑦ **IR/CHR**
 - Remote control sensor/Charging indicator.
- PWR**
 - Power indicator.
- ⑧ **OPEN**
 - Opens the disc compartment.

- ⑨ ▲ (CH+), ▼ (CH-), ◀, ▶
- Navigates menus.
- ▲ (CH+), ▼ (CH-)
- Switches to the next or previous channel.
- ◀, ▶
- Searches backward/forward at different speeds.
- ▶||
- Confirms an entry or selection.
 - Starts, pauses or resumes disc play.
- ⑩ |◀◀/▶▶|
- Skips to the previous or next title, chapter, or track.
- ⑪ ■
- Stops disc play.
- ⑫ **OPTIONS**
- Accesses options relating to the current activity or selection.
- ⑬ **SOURCE**
- Switches between Disc, DTTV and Radio-DVBT.
- ⑭ **TV ANTENNA**
- Antenna jack.

Overview of remote control



- ① **SOURCE**
 - Switches between Disc, DTTV and Radio-DVBT.
- ② **TELETEXT**
 - Toggles teletext on or off.
- ③ **FAV LIST**
 - Accesses or exits the favorite list.

- ④ **Color keys**
 - Selects tasks or options.
- ⑤ **SETUP**
 - Accesses or exits the setup menu.
- ⑥ ▲, ▼, ◀, ▶
 - Navigates menus.
 ◀◀, ▶▶
 - Searches backward/forward at different speeds.
- OK**
 - Confirms an entry or selection.
 - Accesses or exits the channel list.
- ⑦ **DISPLAY**
 - Adjusts the display value of the system.
- ⑧ ▶||
 - Starts or resumes disc play.
- ⑨ |◀◀, ▶▶|
 - Skips to the previous or next title, chapter, or track.
- ⑩ ■
 - Stops disc play.
- ⑪ **0-9**
 - Numeric keypad
- ⑫ **GO TO**
 - Skip to a chapter/track/title or a play time
- ⑬ **REPEAT**
 - Repeats a chapter/track/title.
- ⑭ 
 - Adjusts screen aspect ratio.
- ⑮ **ANGLE**
 - Selects a different viewing angle of a DVD.
- ⑯ **AUDIO**
 - For DVD, selects an audio language.
 - For VCD, selects an audio mode.
 - For DTTV, press and hold this button to select the dual audio channels.

- ⑪ **SUBTITLE**
 - Selects DVD subtitle language.
- ⑫ **CH +/-**
 - Switches to the next or previous channel.
- ⑬ **OPTIONS**
 - Accesses options relating to the current activity or selection.
- ⑭ **DISC MENU**
 - Accesses or exits the disc menu.
- ⑮ **INFO**
 - Displays program information, if available.
- ⑯ **EPG**
 - Toggles the Electronic Program Guide (EPG) on or off. Enabled on digital channels only.

3 Get started



Caution

- Use the controls only as stated in this user manual.
- Always follow the instructions in this chapter in sequence.

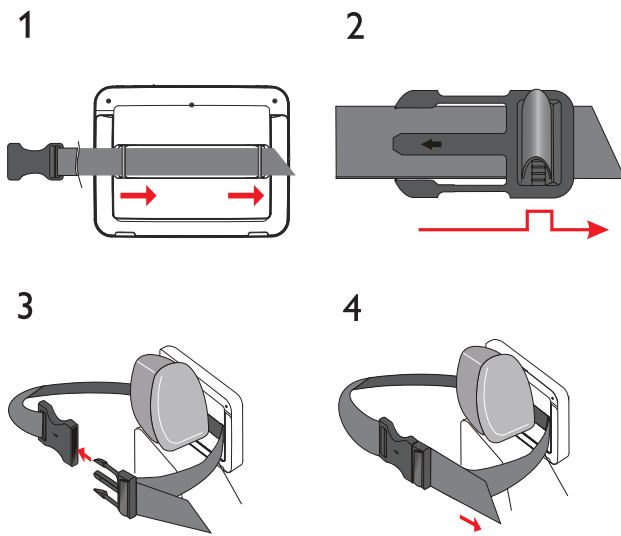
If you contact Philips, you will be asked for the model and serial number of your player. The model number and serial number are on the bottom of your player. Write the numbers here:

Model No. _____

Serial No. _____

Preparation

To use the player in a car, attach the main unit to the back of the front seat headrest.



- 1 Pull the strap through the loops on the back of the main unit.
- 2 Hold the buckle with the marked arrow facing you, then attach the buckle to the strap.
- 3 Position the main unit at the back of the headrest, then fasten the buckle.
- 4 Pull the strap to secure the main unit to the headrest.

Charge the battery



Caution

- Risk of product damage! Ensure that the power supply voltage corresponds to the voltage printed on the bottom of the player.
- Use only the supplied AC adaptor to charge the battery.

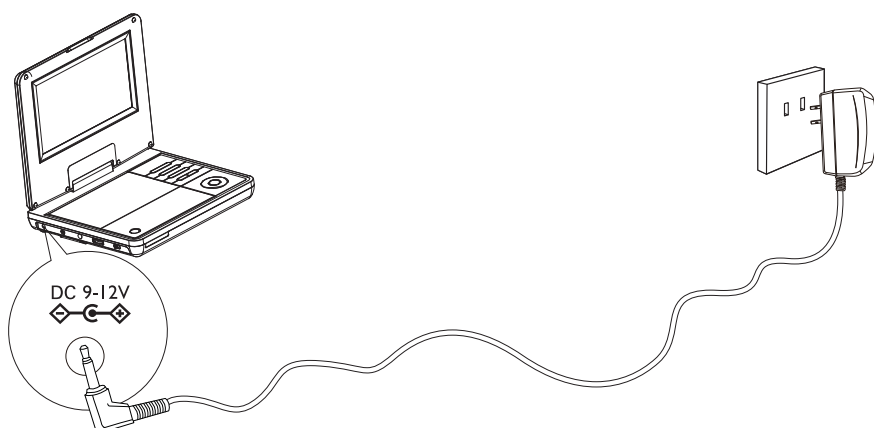


Note

- The type plate is located on the bottom of the player.
- You can only charge the player when it is in power-off mode.

- 1 Slide the **POWER ON/OFF** switch to **OFF** position.

- 2 Connect the supplied AC adaptor to the player and to the AC outlet.



- ➡ The charge indicator turns on. It takes about 7 hours to fully charge the battery.
- ➡ When the battery is fully charged, the charge indicator turns off.

Install remote control battery



Caution

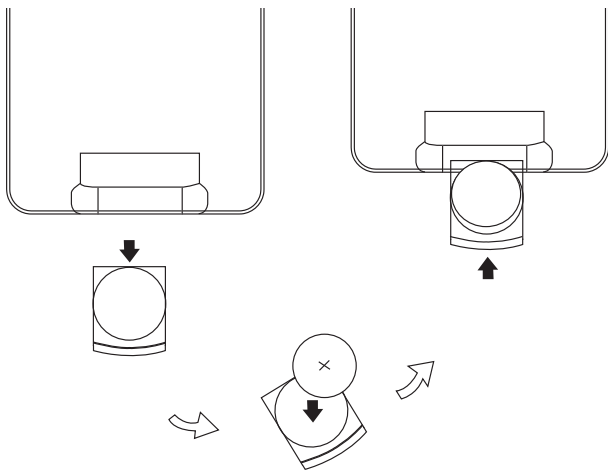
- Risk of explosion! Keep batteries away from heat, sunshine or fire. Never discard batteries in fire.
- Danger of explosion if battery is incorrectly replaced. Replace only with the same or equivalent type.
- Batteries contain chemical substances, they should be disposed of properly.
- Perchlorate Material - special handling may apply. See www.dtsc.ca.gov/hazardouswaste/perchlorate.

For first-time use:

- 1 Remove the protective tab to activate the remote control battery.

To replace the remote control battery:

- 1 Open the battery compartment.
- 2 Insert 1 CR2025 battery with correct polarity (+/-) as indicated.
- 3 Close the battery compartment.



Connect additional equipment

Connect a TV

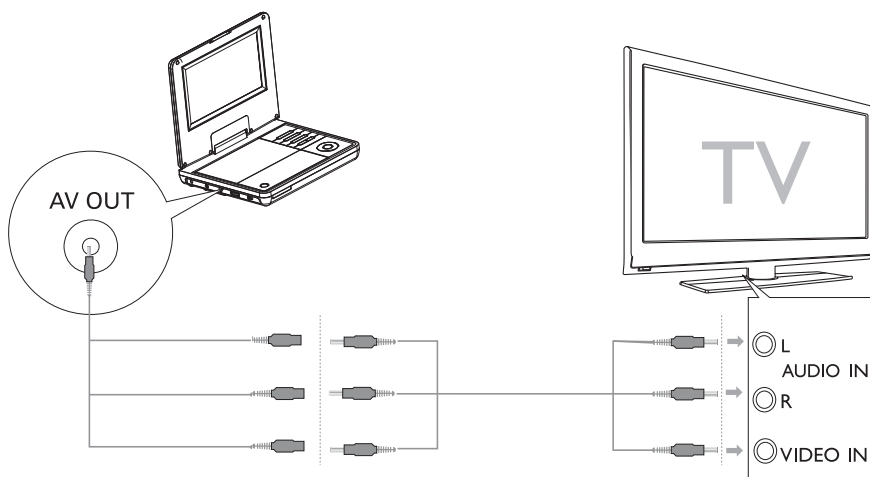


Caution

- Turn off your player before connecting to any additional equipment.

You can connect the player to a TV to enjoy DVD.

- Match the color of the AV cables (the AV cable connected to the TV is not supplied) with the jacks: the yellow cable is for the yellow video jack, the red/white cable is for the red/white audio jacks.





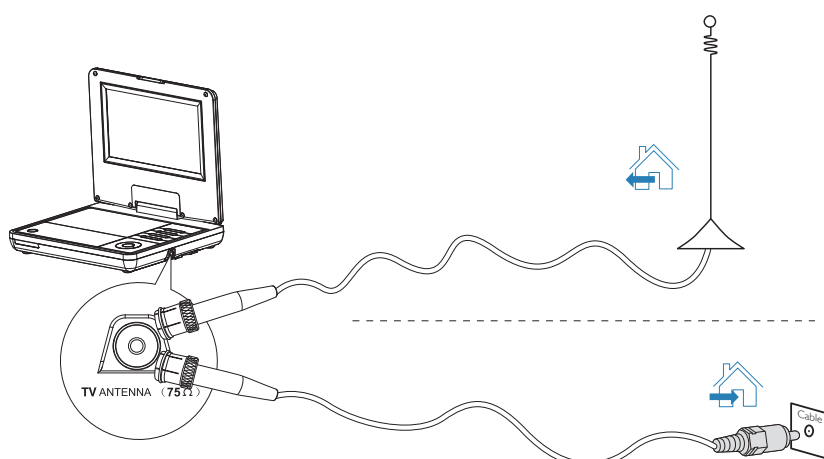
Note

- You cannot output the TV content from the player to a TV.

Connect TV antenna

You can connect your player to the supplied antenna or home antenna to receive digital TV program.

- 1 Connect the antenna to the **TV ANTENNA** jack.



Tip

- For better reception, connect the player to home antenna.

4 Play

Turn on

Slide the **POWER ON/OFF** switch to the **ON** position.

↳ The **PWR** indicator turns on.

Select OSD language

You can choose a different language for the on-screen display text.

- 1 Press **SETUP**.
↳ The setup menu appears.
 - 2 Select [**General**] > [**Language**].
 - 3 Press ►► to select an option.
 - 4 Press **OK** to confirm.
 - 5 Press **SETUP** to exit.
-

Play discs

- 1 Press **SOURCE** to switch to Disc mode.
 - 2 Press **OPEN** on the main unit to open the disc compartment.
 - 3 Insert a disc with label side facing up.
 - 4 Push down to close the CD compartment.
↳ Play starts automatically.
 - If a menu appears, select an item, then press ►|| to start play.
 - To pause, press ►||. Press again to start play.
 - To stop, press ■.
 - To select the previous/next item, press ◀◀ or ▶▶.
 - To start search within video/audio, press and hold ◀◀ or ▶▶. Briefly press ◀◀ or ▶▶ during search to adjust search speed.
-

Play options

- 1 During play, press **OPTION** to select some play options.
For DVD:
 - [**Subtitles**]
 - [**Audio language**]
 - [**Angle**]
 - [**Zoom & Pan**]
 - [**Setup**]For VCD:
 - [**Audio**]
 - [**Zoom & Pan**]
 - [**Setup**]For audio CDs:

- [Repeat]
- [Shuffle all]
- [Setup]

For JPEG CDs:

- [Rotate]
- [Zoom & Pan]
- [Setup]

2 Follow the on-screen instructions.

5 Watch TV



Note

- Before you start, ensure that you have connected the antenna to the player.
- Make sure you are in an area with sufficient DTTV signal coverage. You can check the signal coverage with the TV broadcast authority of your country or visit www.philips.com/support.

First time settings

1 Press **SOURCE** to switch to DTTV mode.
 ↳ You are prompted to select your country.



2 Select your country, then press **OK** to confirm.
 ↳ You are prompted to perform auto channel search.

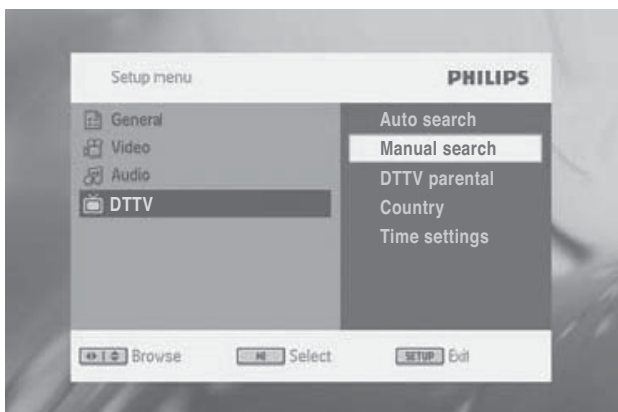


- 3 Select [**Auto search**], then press **OK** to confirm.
 - ↳ Auto channel search starts.
 - ↳ When auto channel search is complete, the total number of TV and radio channels found is displayed.
 - ↳ To view the programs of the first found channel, press **OK**.
 - ↳ To change channels, press **CH +/-**.

Manual search

You can search TV channels manually.

- 1 Press **SETUP**.
- 2 Select [**DTV**] > [**Manual search**], then press **OK** to confirm.



- 3 Select channel number, then press **OK** to confirm.

Set time

- 1 Press **SETUP**.
- 2 Select [**DTV**] > [**Time settings**].

To set time format:

- 1 Select **[Time format]**.
- 2 Select an option, then press **OK** to confirm.
 - **[24hrs]**
 - **[12 hrs]**

To select time setting mode:

- 1 Select **[Setting mode]**.
- 2 Select an option, then press **OK** to confirm.
 - **[Auto time setting]**: The time is updated automatically according to the broadcasted TV channel.
 - **[Manual time setting]**: Set your time manually.

To set time zone:

- 1 Select **[Setting mode] > [Manual time setting]**, then press **OK** to confirm.
- 2 Select **[Time zone]**.
 - Select GMT +01:00 for Germany and Central Europe (time difference with regard to the Greenwich mean time)

To set summer time/DST:


- 1 Select **[Setting mode] > [Manual time setting]**, then press **OK** to confirm.
- 2 Select **[Summer time/DST]**.
 - If it is not summer time at the moment, select **[Off]**.


View program information


To view brief information of the current program, press **INFO**.



- ① **TV program**
Radio program
- ② **Next program's information**
- ③ **Program number**
- ④ **Program name**
- ⑤ **Local time**
- ⑥ **Signal length indicator**
- ⑦ **Program information icons**

: Program containing different audio languages. You can press **AUDIO** or **OPTIONS** to access this functions.

: Program containing subtitles. You can press **SUBTITLE** or **OPTIONS** to access this function.

: Program containing Teletext. You can press **TELETEXT** to access this function.

Access teletext

If the current channel has teletext available,  is shown.

- To access teletext, press **TELETEXT**.



Tip

- The program may request using color keys to access or control the viewing features. Follow the instructions on the teletext screen.

Use the electronic program guide

EPG is an on-screen guide available for digital TV programs. You can navigate, select and view programs by time or title.

- 1 Select a channel.
- 2 Press **EPG**.
 - ↳ The Electronic Program Guide appears.
- 3 Press **▼▲** to select a program.
- 4 Press **OK**.
 - ↳ The brief information of this program is displayed.
- 5 To exit the EPG menu, press **EPG**.

Rearrange the channel list

- 1 Press **OPTIONS**.
- 2 Select **[Channel Edit]**.
↳ The channel list is displayed.
- 3 Select a channel.
- 4 Follow the on-screen instructions to move the channel up or down.

Manage channels

- 1 Press **OK**.
↳ The channel list is displayed.
- 2 Select a channel.
 - To lock the channel, press the red button.
 - To hide the channel, press the yellow button.
 - To set the channel your favorite one, press the green button.

6 Adjust settings

To maximize your play experience, use **SETUP** to fine tune your settings.

- 1 Press **SETUP**.
↳ The setup menu is displayed.
- 2 Use navigation keys to select an option and press **OK** to confirm.

[General]	
[Language]	Select on-screen display language
[PBC settings]	Set playback control function on/off.
[Power save]	Set power saving mode.
[DivX (VOD)]	Get DivX registration code.
[DivX subtitles]	Select DivX subtitle language.
[Parental(DVD)]	Select parental options.
[Set password]	Change existing password (3308 by default).

[Factory settings]	Restore factory settings.
[Video]	
[TV display]	Set screen display aspect ratio.
[TV standard]	Set video output format to TV system.
[Audio]	
[Dolby]	Set Dolby output.
[DTTV]	
[Auto search]	Search channels automatically.
[Manual search]	Search channels manually.
[DTTV Parental]	Select parental options.
[Country]	Select specific country.
[Time settings]	Set time.

3 Press ◀◀ to go back to previous menu level.

4 Press **SETUP** to exit.

7 Product information

Note

- Product information is subject to change without prior notice.

Dimensions	210 × 170 × 39.5 mm
Weight	0.84 kg
Power supply	Input: 100-240V, 50/60Hz Output: DC 9-12V, 1.0A
Operating temperature range	0-50°C
Laser wavelength	650 nm
Video system	NTSC/PAL

8 Troubleshooting



Warning

- Risk of electric shock. Never remove the casing of the player.

To keep the warranty valid, never try to repair the system yourself. If you encounter problems when using the player, check the following points before requesting service. If the problem remains unsolved, register your player and get support at www.philips.com/welcome.

No power

- Ensure that both plugs of the mains cord are properly connected.
- Ensure that there is power at the AC outlet.
- Check if the built-in battery is drained.

No sound

- Ensure that the AV cable is connected correctly.

No response to the remote control

- Ensure that the path between the remote control and the player is clear from obstacles.
- From a close distance, point the remote control directly at the player.
- Replace the remote control batteries.
- The function does not work for this disc. Refer to the disc instructions.

Distorted picture

- Clean the disc. With a clean, soft, lint-free cloth, wipe the disc outwards from the center.
- Make sure that the video output format of the disc is compatible with the TV.

- Change the video output format to match your TV or program.
- The LCD is manufactured using high precision technology. You may, however, see tiny black points and/or bright points (red, blue, green) that continuously appear on the LCD. This is a normal result of the manufacturing process and does not indicate a malfunction.

Cannot play disc

- Ensure the disc label is upwards.
- Clean the disc. With a clean, soft, lint-free cloth, wipe the disc outwards from the center.
- Check if the disc is defective by trying another disc.

No response to operating commands

- The operation is not permitted by the disc.

The player feels warm

- When the player is in use for a long period of time, its surface will be heated. This is normal.

No/weak signal displayed on the screen

- DVB-T signal is too weak or out of DVB-T signal covering area.
- Make sure you are in an area with sufficient coverage.
- Receiving DVB-T in a driving car may cause signal problems.

Loss of current TV programs when travelling to another country

- 1 Press **SETUP**.
- 2 Select **[DTTV] > [Country]**.
- 3 Select your country.
- 4 Select **[Auto search]**.