

Always there to help you

Register your product and get support at
www.philips.com/support



Short User Manual

PHILIPS



Specifications are subject to change without notice.
 2015 © Gibson Innovations Limited. All rights reserved.
 This product has been manufactured by, and is sold under the responsibility of Gibson Innovations Ltd., and Gibson Innovations Ltd. is the warrantor in relation to this product. Philips and the Philips Shield Emblem are registered trademarks of Koninklijke Philips N.V. and are used under license from Koninklijke Philips N.V.

BT4080_98_Short User Manual_V1.0

PHILIPS

Warranty against Defects

In this warranty:

We or us means Gibson Innovations ARBN 165 105 975, and our contact details are set out at the end of this warranty;

You means the purchaser or the original end-user of the Goods;

Supplier means the authorised distributor or retailer of the Goods that sold you the Goods in Australia or New Zealand; and

Goods means the product or equipment which was accompanied by this warranty and purchased in Australia or New Zealand.

If you require assistance with the operation of the product, its features or specifications please call the Philips Consumer Care Centre on 1300 850 633 in Australia or 0800 639 953 in New Zealand.

Australia: Our Goods come with guarantees that cannot be excluded under the Australian Consumer Law. You are entitled to a replacement or refund for a major failure and for compensation for any other reasonably foreseeable loss or damage. You are also entitled to have the Goods repaired or replaced if the goods fail to be of acceptable quality and the failure does not amount to a major failure. This is not a complete statement of your legal rights as a consumer.

New Zealand: Our Goods come with guarantees that cannot be excluded under the Consumer Guarantees Act 1993. This guarantee applies in addition to the conditions and guarantees implied by that legislation.

Additional Warranty:

In addition to the rights and remedies that you have under the Australian Consumer Law, Consumer Guarantees Act of New Zealand or any other applicable law, we provide the following warranty against defects:

- If, during the first **12 months** from their date of purchase from the Supplier (**Warranty Period**), the Goods prove defective by reason of improper workmanship or materials and none of your statutory rights or remedies apply, we will repair or replace the Goods without charge.
- We do not have to repair or replace the Goods under this Additional Warranty if the Goods have been used for a commercial purpose; misused, improperly or inappropriately installed, operated or repaired; abused; damaged; or not maintained in accordance with the manufacturer's instructions.
- Even when we do not have to repair or replace the Goods, we may decide to do so anyway. In some cases, we may decide to substitute the Goods with a similar alternative product of our choosing. All such decisions are at our absolute discretion.
- All such repaired, replaced or substituted Goods continue to receive the benefit of this Additional Warranty for the time remaining on the original Warranty Period.
- This Additional Warranty is limited to repair, replacement or substitution only. As far as the law permits, we will not be liable for any loss or damage caused to property or persons arising from any cause whatsoever.
- In order to claim under this Additional Warranty you must telephone us on 1300 850 633 in Australia or 0800 639 953 in New Zealand within the Warranty Period. You will be asked for details of the Goods, a description of the defect and your personal details. Upon accepting your claim, we shall assist you with either returning the Goods to the Supplier for replacement or to the most convenient Philips Authorised Service Centre for your Goods to be repaired. In some case we may require that you return to the Goods to us (at the address below) for repair, replacement or substitution.
 - * All returned Goods must be accompanied by satisfactory proof of purchase which clearly indicates the name and address of the Supplier, the date and place of purchase and identifies product. It is best to provide a legible and unmodified receipt or sales invoice.
 - * You must bear any expense for return of the Goods or otherwise associated with making your claim under this Additional Warranty.
- This warranty is only valid and enforceable in Australia and New Zealand.

Contact us or the place of purchase for further details.

Australia
 Gibson Innovations
 Suite 22a 33 Waterloo Rd
 Nth Ryde, NSW 2113
Consumer Care: 1300 850 633
E-mail: pccw.woox@gibson.com
Website: www.philips.com/support

New Zealand

Consumer Care: 0800 639 953
Email: pccw.woox@gibson.com
Website: www.philips.com/support

BT4080

1 Important

Warning

- Never remove the casing of this speaker.
- Never place this speaker on other electrical equipment.
- Keep this speaker away from direct sunlight, naked flames or heat.
- Make sure that you always have easy access to the power cord, plug, or adaptor to disconnect the speaker from the power.

- Make sure that there is enough free space around the speaker for ventilation.
- Only use attachments/accessories specified by the manufacturer.
- Unplug this apparatus during lightning storms or when unused for long periods of time.
- Refer all servicing to qualified service personnel. Servicing is required when the apparatus has been damaged in any way, such as liquid has been spilled or objects have fallen into the apparatus, the apparatus has been exposed to rain or moisture, does not operate normally, or has been dropped.
- Battery shall not be exposed to excessive heat such as sunshine, fire or the like.
- Apparatus shall not be exposed to dripping or splashing.
- Do not place any sources of danger on the apparatus (e.g. liquid filled objects, lighted candles).
- Where the plug of the Direct Plug-in Adapter is used as the disconnect device, the disconnect device shall remain readily operable.

Note

- The type plate is located on the bottom of the product.

2 Notice

Any changes or modifications made to this device that are not expressly approved by Gibson Innovations may void the user's authority to operate the equipment.

Care of the environment

Disposal of your old product

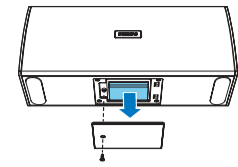
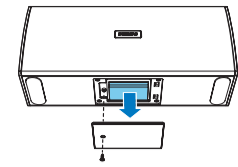
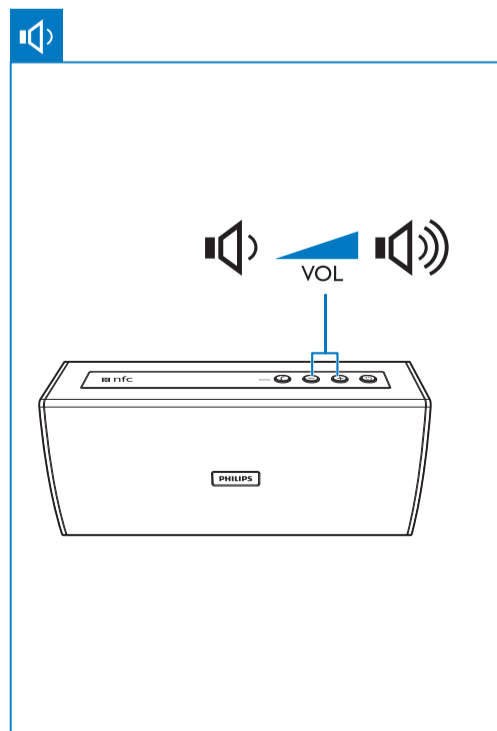
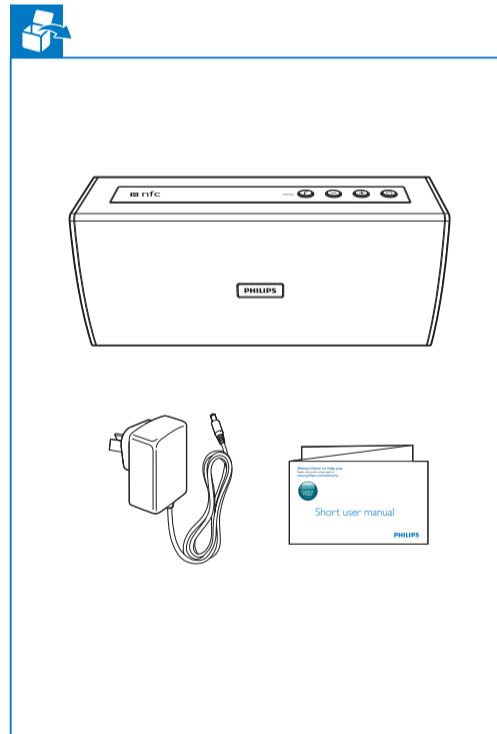
Your product is designed and manufactured with high quality materials and components, which can be recycled and reused.

Do not throw away the product with the normal household waste at the end of its life, but hand it in at an official collection point or recycling. By doing this, you help to preserve the environment.

Caution

- Removal of the built-in battery invalidates the warranty and may destroy the product.

Always bring your product to a professional to remove the built-in battery.



Environmental information

All unnecessary packaging has been omitted. We have tried to make the packaging easy to separate into three materials: cardboard (box), polystyrene foam (buffer) and polyethylene (bags, protective foam sheet.)

Your system consists of materials which can be recycled and reused if disassembled by a specialized company. Please observe the local regulations regarding the disposal of packaging materials, exhausted batteries and old equipment.

Trademark notice

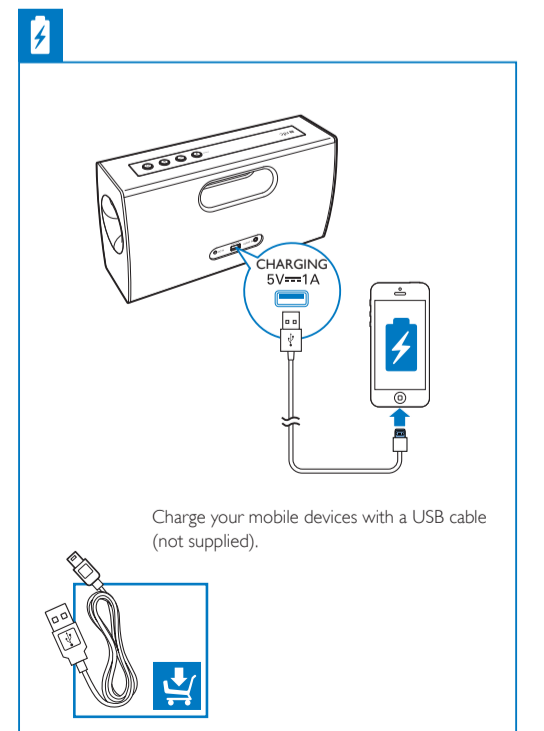
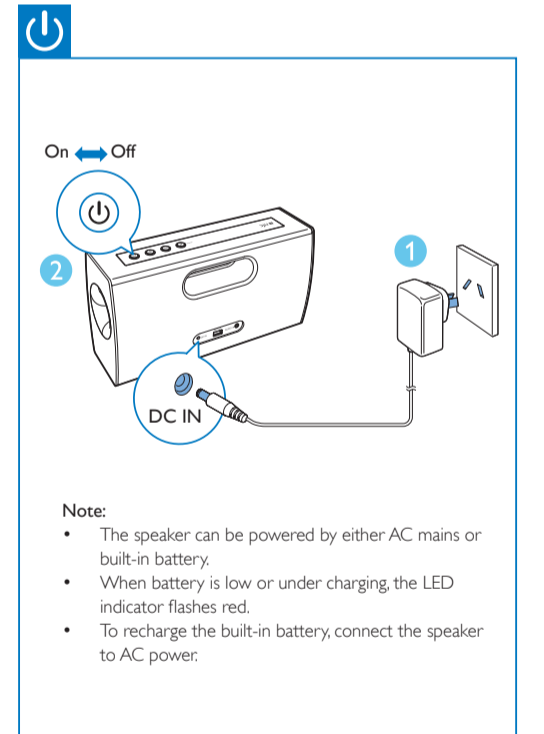
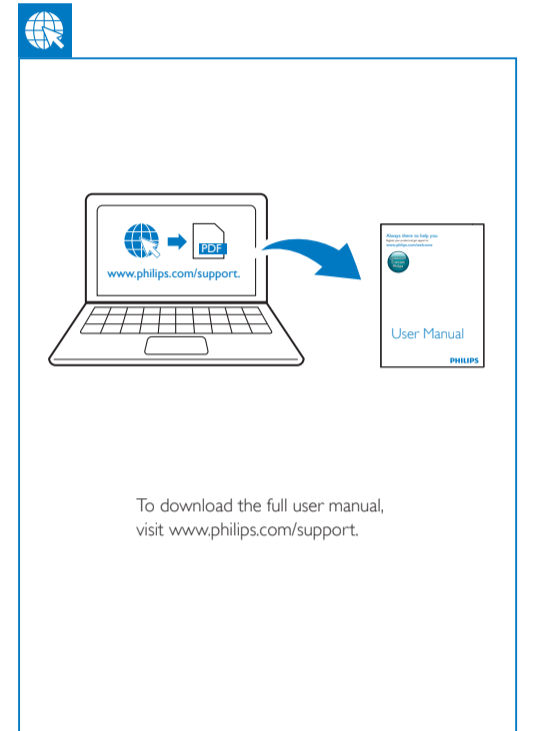
The Bluetooth® word mark and logos are registered trademarks owned by Bluetooth SIG, Inc. and any use of such marks by Gibson Innovations Limited is under license. Other trademarks and trade names are those of their respective owners.

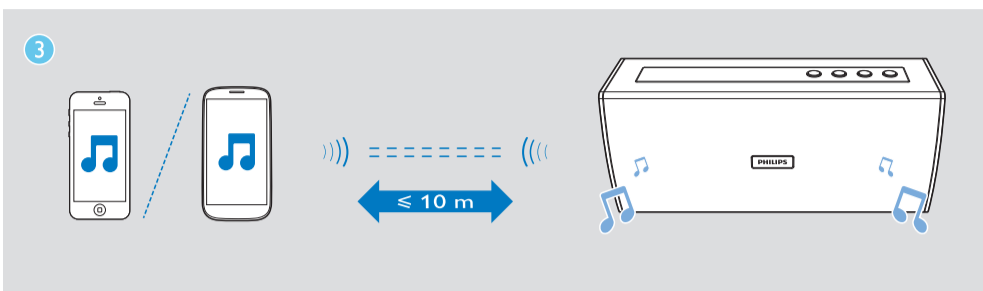
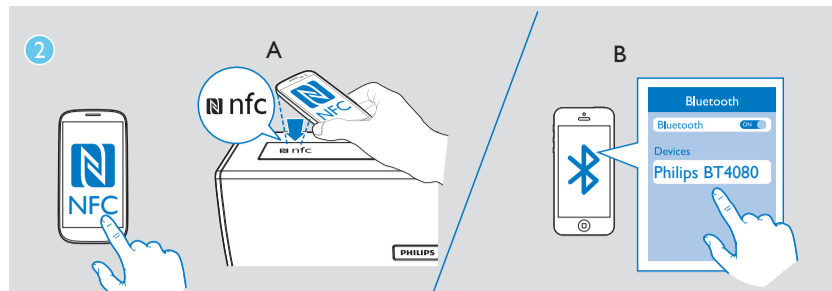
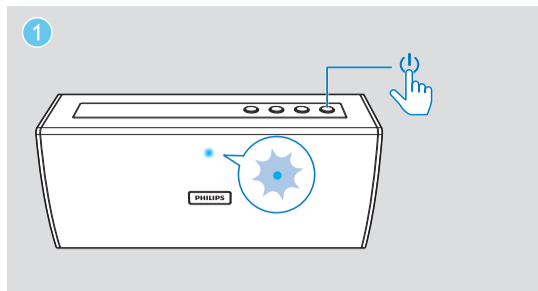


The 'N' Mark is a trademark or registered trademark of NFC Forum, Inc. in the United States and in other countries.



This is CLASS II apparatus with double insulation, and no protective earth provided.





Play

After successful Bluetooth connection, play audio on the Bluetooth device.

Connect

A Option 1: Connect a device through NFC

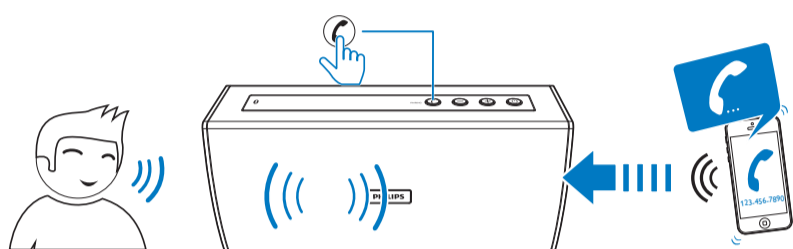
- 1 Press on the speaker.
 - ↳ The LED indicator flashes blue.
- 2 On your device, enable NFC feature on your Bluetooth device.
- 3 Touch the NFC tag on the speaker with the NFC area of your Bluetooth device.
- 4 Follow the on-screen instructions to complete the pairing and connection.
 - ↳ After successful pairing and connection, the speaker beeps twice, and the LED indicator turns solid blue.

B Option 2: Connect a device manually

- 1 Press on the speaker.
- 2 On your Bluetooth device, enable Bluetooth and search for Bluetooth devices.
- 3 Select **[Philips BT4080]** on your device to start pairing and connection. If necessary, input default password "0000".
 - ↳ After successful pairing and connection, the speaker beeps twice, and the LED indicator turns solid blue.
 - If you fail to find **[Philips BT4080]** for pairing, first press and hold **PAIRING** for three seconds to enter pairing mode.

Note:

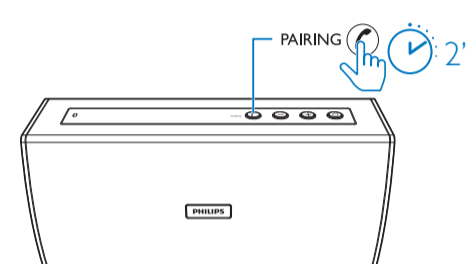
- Keep away from any other electronic device that may cause interference.
- Before connecting another Bluetooth device, disconnect the current device first.



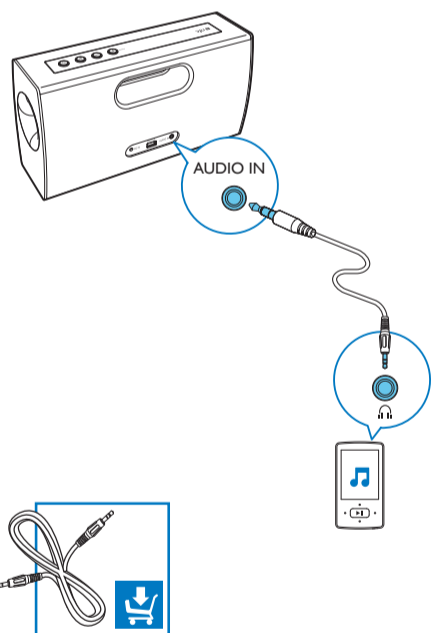
After Bluetooth connection, you can control an incoming call with this speaker:

Button	Function
	Press to answer an incoming call.
	Press and hold for 2 seconds to reject an incoming call.
	During a call, press to end the current call.

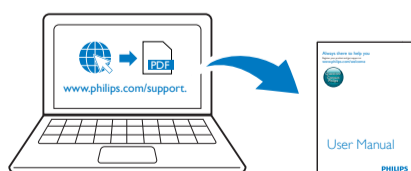
Note: Music play pauses when there is an incoming call.



Enter Bluetooth pairing mode;
Disconnect Bluetooth connection.



Note: To switch to audio-in mode, make sure that there is no Bluetooth connection, or music playback through Bluetooth is paused.



To download the full user manual, visit www.philips.com/support.



Specifications

Amplifier

Rated Output Power	2 X 10 W RMS
Frequency Response	80 - 16000 Hz, ±3 dB
Signal to Noise Ratio	>67 dBA

Bluetooth

Bluetooth Version	V4.0
Bluetooth Frequency	2.4 GHz ~ 2.48 GHz
Brand	
Bluetooth Range	10 m (Free space)

Speakers

Speaker Impedance	8 ohm
Sensitivity	>84dB/m/W ±3dB/m/W

General information

Power Supply	
- AC Power (Power Adapter)	Brand name: PHILIPS;
	Model: ASSA32-150240;
	Input: 100-240 V~, 50/60 Hz, 1 A;
	Output: 15 V === 2.4 A;
- Battery (Built-in)	11,1V, 1500 mAh
Operation Power Consumption	12.5 W (with 1A charging loader)

Eco Standby Power Consumption	< 0,5 W
Charging support	5 V, 1 A
Dimensions - Main Unit (W x H x D)	300 x 163 x 96 mm
Weight - Main Unit	1.9 kg