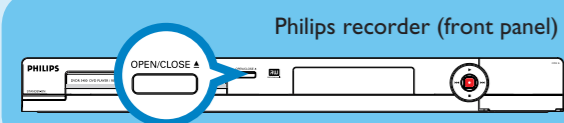


3 Enjoy

Inserting discs



- 1 Press **OPEN/CLOSE** on the front of the recorder.



- 2 Place a DVD disc in the tray with the label facing up.
- 3 Press **OPEN/CLOSE** on the front of the recorder again.

Playback

- 1 Press **up** or **down** to scroll through the list of options or titles.
- 2 Press **PLAY** on the title you want to play.
- 3 To stop press **STOP** .
- 4 Press **DISC MENU** to go back.

Recording

- 1 For recording, place a blank DVD±RW or DVD±R disc in the tray with the label facing up and close the tray.

Recording (continued)

- 2 Press **REC SOURCE** repeatedly to select the source to record from.

Note This helps to select whether you want to record from the tuner or from any device connected through audio/video input connectors.

- 3 Press **REC MODE** repeatedly to select the record mode.

Note Choose from recording at high quality - HQ (available recording time is 1 hour), standard play - SP (2 hours), extended play - EP (4 hours) and super long play - SLP (6 hours).

- 4 Use **up** / **down** keys to scroll the channels, or press **0** **0** **-9** **9** to select the channel that you want to record.

- 5 Press **REC** to start recording, press **REC** again to automatically record 30 minutes.

Note Every time you press **REC** , an additional 30 minutes is added to the recording time.

- 6 To end recording, press **STOP** . 'Update' will be displayed on the recorder.

- 7 To playback the recording, press **DISC MENU** , select the title and press **PLAY** .

Discs for recording

Type	Record	Playback	Edit
DVD+RW	✓	✓	✓
DVD+R	✓	✓	✓
DVD-RW	✓	✓	✓
DVD-R	✓	✓	✓

Need help?

User Manual

See the user manual that came with your Philips recorder.

Hotline

Call 1-888-PHILIPS (1-888-744-5477) for our operators.

Online

Go to www.philips.com/usasupport.



2006 © Philips Consumer Electronics
A Division of Philips Electronics North
America Corp
P.O. Box. 671539 Marietta, GA 30006 0026
All rights reserved.

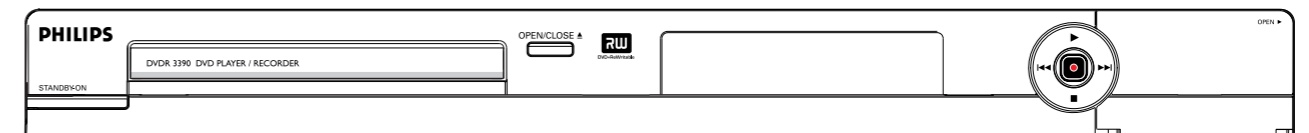
Printed in China
12 NC 3139 245 20931

Quick Start Guide

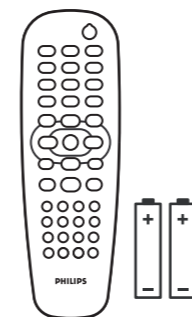


- 1 Connect
- 2 Set up
- 3 Enjoy

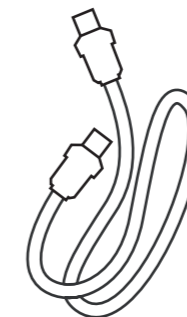
What's in the box?



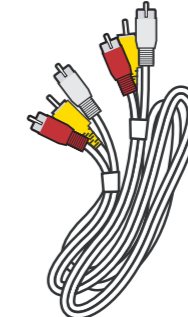
DVD Player/ Recorder



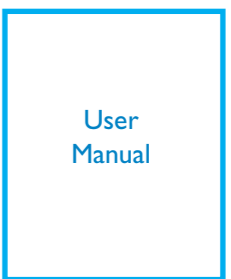
Remote Control
and 2 batteries



RF Coaxial Cable



Audio/Video Cable



User
Manual



1 Connect

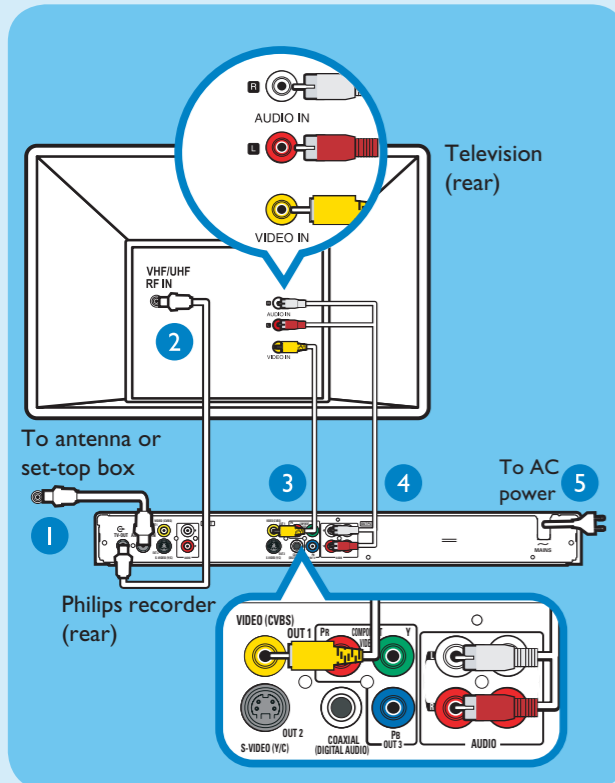
Start with the 'Basic Connection.'
If you have a VCR, follow the instructions for 'Connection with a VCR or similar device'.

Basic Connection

A Before Connecting

Unplug the antenna cable that is currently connected to your TV.

B Connecting



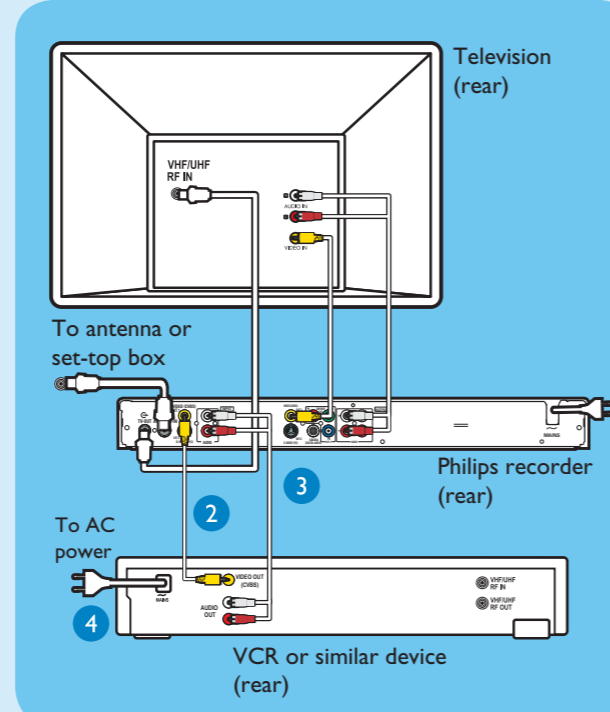
- 1 Connect the antenna cable to the **ANTENNA-IN** jack on the recorder.
- 2 Use the supplied RF coaxial cable to connect the **TV-OUT** jack on this recorder to the Antenna In jack on the TV.
- 3 Use the supplied audio/video cable (yellow plug) to connect the **VIDEO (CVBS) -OUT1** jack on this recorder to the VIDEO IN jack on the TV.
- 4 Use the supplied audio/video cable (red/white plugs) to connect the **AUDIO OUTPUT** jacks on this recorder to the AUDIO IN jacks on the TV.
- 5 Connect the power cable from the recorder to an AC power outlet.

Connection with a VCR or similar device

A Before Connecting

Your new Philips recorder replaces the VCR for your recording needs. First, unplug all the connections from your VCR.

B Connecting



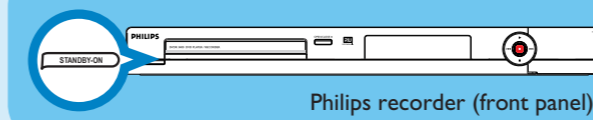
- 1 Follow steps 1 to 5 of 'Connecting' under 'Basic Connections' to connect the recorder before you proceed to step 2 below.
- 2 Use a yellow video cable (not supplied) to connect the **VIDEO (CVBS) EXT 1** jack on this recorder to the yellow VIDEO OUT jack on the VCR.
- 3 Use another red and white audio cable (not supplied) to connect the **AUDIO INPUT** jacks on this recorder to the red and white AUDIO OUT jacks on the VCR.
- 4 Connect the power cable from your VCR to an AC power outlet.

Note In this setup, the VCR cannot record TV programs.

For additional connection diagrams, see the accompanying User Manual.

2 Set up

A Finding the viewing channel



- 1 Press **STANDBY-ON** on the recorder.
- 2 Turn on the TV.

Note If connected to your VCR, make sure it is switched off or in standby mode before proceeding.

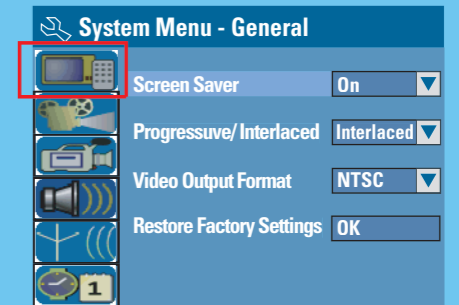
- 3 Press **SYSTEM MENU** on the remote control.
- 4 Press '0' on the TV's remote control, then press the Channel Down button repeatedly until you see the { **System Menu - General** } page. This is the correct viewing channel for the recorder.



Note You may press the AV or SELECT button on the TV's remote control (if available) to select the correct viewing channel. See your TV's user manual.

B Initial Installation

- 1 Press **SYSTEM MENU** on the remote control.



Note Use up / down keys to toggle through the options. Select an item by pressing right. To confirm a setting, press OK.

2 Setup and install TV channels.

- Highlight **Tuner Input Source** and press right. Select { **Tuner Input Source** } and press OK.
 - { **Cable** } if the recorder is connected directly to the cable signal or through set-top box.
 - { **Air** } if the recorder is connected directly to an indoor or outdoor antenna.

Note Press OK to confirm your selection.

- Select { **Channel Search** } and press OK on the remote control to start automatic TV channel search.
- 3 **Select the language.**
 - Highlight **Language** and press right.
 - selects TV On-Screen Display language.
 - selects default Disc Menu language.
 - selects default subtitle language.
 - selects default audio language.
- 4 **Select the date and time.**
 - Highlight **Date/Time** and press right. Use the numeric keypad 0-9 to input the date/time, then press OK to confirm.
- 5 Press **SYSTEM MENU** to exit.