

Register your product and get support at
www.philips.com/welcome

DCM2060



EN User manual

ZH-TW 使用手冊

PHILIPS

Contents

1	Important	4
	Know these safety symbols	4
	Hearing Safety	5
2	Your Micro System	6
	Introduction	6
	What's in the box	6
	Overview of the main unit	7
	Overview of the remote control	8
3	Get started	9
	Placement	9
	Connect FM antenna	9
	Prepare the remote control	10
	Connect power	10
	Store FM radio stations automatically	11
	Set clock	11
	Turn on	11
4	Play	12
	Play disc	12
	Play from USB	12
	Play from iPod/iPhone/iPad	12
	Play options	13
	Adjust sound	14
	Display different information	14
5	Listen to FM radio	14
	Tune to FM radio stations	14
	Program FM radio stations automatically	14
	Program FM radio stations manually	15
	Select a preset radio station	15
	Select stereo/mono broadcast	15
6	Other features	15
	Set the alarm timer	15
	Set the sleep timer	16
	Listen through the headphone	16
	Play from external audio device	16
7	Product information	17
	Specifications	17
	USB playability information	17
	Supported MP3 disc formats	18
8	Troubleshooting	18
9	Notice	19
	Disposal of your old product and batteries	19

1 Important

- Read these instructions.
- Follow all instructions.
- Do not block any ventilation openings. Install in accordance with the manufacturer's instructions.
- Do not install near any heat sources such as radiators, heat registers, stoves, or other apparatus (including amplifiers) that produce heat.
- Protect the power cord from being walked on or pinched, particularly at plugs, convenience receptacles, and the point where they exit from the unit.
- Only use attachments/accessories specified by the manufacturer.
- Unplug this unit during lightning storms or when unused for long periods of time.
- Refer all servicing to qualified service personnel. Servicing is required when the unit has been damaged in any way, such as power-supply cord or plug is damaged, liquid has been spilled or objects have fallen into the apparatus, the unit has been exposed to rain or moisture, does not operate normally, or has been dropped.
- Battery usage CAUTION – To prevent battery leakage which may result in bodily injury, property damage, or damage to the remote control:
- Install all batteries correctly, + and - as marked on the remote control.
- Do not mix batteries (old and new or carbon and alkaline, etc.).
- Remove batteries when the remote control is not used for a long time.
- The unit shall not be exposed to dripping or splashing.
- Do not place any sources of danger on the unit (e.g. liquid filled objects, lighted candles).
- Where the plug of the Direct Plug-in Adapter is used as the disconnect device,

the disconnect device shall remain readily operable.

Know these safety symbols



This 'bolt of lightning' indicates uninsulated material within your unit may cause an electrical shock. For the safety of everyone in your household, please do not remove product covering.

The 'exclamation point' calls attention to features for which you should read the enclosed literature closely to prevent operating and maintenance problems.

WARNING: To reduce the risk of fire or electric shock, this apparatus should not be exposed to rain or moisture and objects filled with liquids, such as vases, should not be placed on this apparatus.

CAUTION: To prevent electric shock, match wide blade of plug to wide slot, fully insert.



Warning

- Never remove the casing of this apparatus.
- Never place this apparatus on other electrical equipment.
- Ensure that you always have easy access to the power cord, plug or adaptor to disconnect the apparatus from the power.

Hearing Safety



Danger

- To avoid hearing damage, limit the time you use the headphones at high volume and set the volume to a safe level. The louder the volume, the shorter is the safe listening time.

Be sure to observe the following guidelines when using your headphones.

- Listen at reasonable volumes for reasonable periods of time.
- Be careful not to adjust the volume continuously upwards as your hearing adapts.
- Do not turn up the volume so high that you can't hear what's around you.
- You should use caution or temporarily discontinue use in potentially hazardous situations.
- Excessive sound pressure from earphones and headphones can cause hearing loss.



Caution

- Use of controls or adjustments or performance of procedures other than herein may result in hazardous radiation exposure or other unsafe operation.

2 Your Micro System

Congratulations on your purchase, and welcome to Philips! To fully benefit from the support that Philips offers, register your product at www.philips.com/welcome.

Introduction

With this unit, you can:

- enjoy audio from discs, iPod/iPhone/iPad, USB devices, and other external devices
- listen to FM radio

You can enrich sound output with these sound effects:

- Digital Sound Control (DSC)
- Dynamic Bass Boost (DBB)

The unit supports these media formats:



What's in the box

Check and identify the contents of your package:

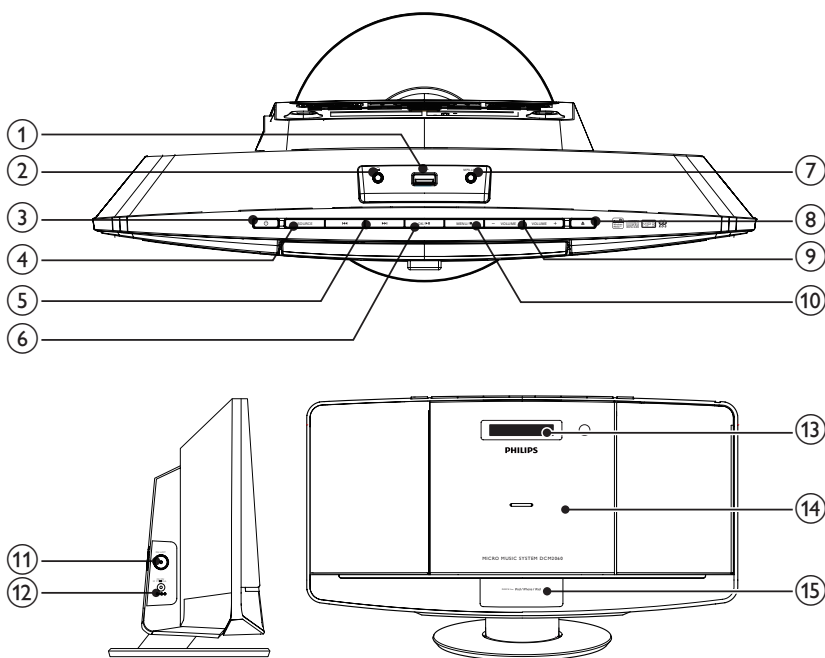
- Main unit
- Remote control
- Power adapter
- 1 x MP3 link cable
- Mounting kit (2 dowels and 2 screws)
- FM antenna
- Rubber pad for iPad
- User manual
- Quick start guide
- Wall mounting instructions

If you contact Philips, you will be asked for the model and serial number of this apparatus. The model number and serial number are on the bottom of the apparatus. Write the numbers here:

Model No. _____

Serial No. _____

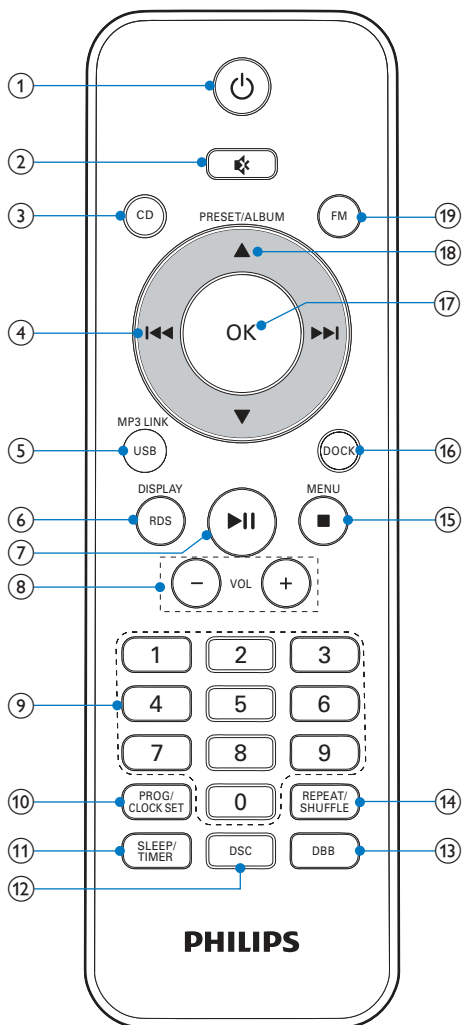
Overview of the main unit



- ①
 - Connect USB device.
- ②
 - Headphone socket.
- ③
 - Turn the unit on.
 - Switch to standby mode.
- ④ **SOURCE**
 - Select a source: CD, FM, USB, Dock, or MP3 LINK.
- ⑤
 - Skip to the previous or next track.
 - Search within a track or disc.
 - Tune to radio stations.
 - Adjust time.
- ⑥ **OK/▶||**
 - Confirm selection.
 - Switch between mono and stereo broadcast.
 - Start or pause play.
- ⑦ **MP3-LINK**
 - Connect an external audio device.
- ⑧
 - Open or close the disk tray.
- ⑨ **VOLUME + / -**
 - Adjust volume.
- ⑩ **MENU/■**
 - Access iPod/iPhone menu.
 - Stop play or erase a program.
- ⑪ **FM ANT**
 - Improve FM reception.
- ⑫ **DC IN**
 - Connect power.

- ⑬ **Display panel**
 - Show play information.
- ⑭ **Disc tray**
- ⑮ **DOCK for iPod/iPhone/iPad**

Overview of the remote control



- ① **Power**
 - Turn the unit on.
 - Switch to standby mode.
- ② **Mute**
 - Mute or restore sound.
- ③ **CD**
 - Select CD source.
- ④ **Previous/Next**
 - Skip to the previous or next track.
 - Search within a track or disc.
 - Tune to radio stations.
 - Adjust time.
- ⑤ **USB/MP3 LINK**
 - Select USB or MP3 link source.
- ⑥ **RDS/DISPLAY**
 - Show time and play information.
 - Have no RDS function.
- ⑦ **Play/Pause**
 - Start/pause play.
- ⑧ **VOL +/-**
 - Adjust volume.
- ⑨ **Numeric Keypad 0 - 9**
 - Select a track from a disc or USB device directly.
 - Select a preset radio station.
- ⑩ **PROG/CLOCK SET**
 - Program tracks.
 - Program radio stations.
 - Set time.
- ⑪ **SLEEP/TIMER**
 - Set sleep or alarm timer.
- ⑫ **DSC**
 - Select a preset sound setting.
- ⑬ **DBB**
 - Turn dynamic bass enhancement on or off.

- ⑭ **REPEAT/SHUFFLE**
 - Play a track or all tracks repeatedly.
 - Play tracks in current album repeatedly.
 - Play tracks randomly.
- ⑮ **MENU/ ■**
 - Access iPod/iPhone menu.
 - Stop play or erase a program.
- ⑯ **DOCK**
 - Select iPod/iPhone/iPad source.
- ⑰ **OK**
 - Confirm selection.
 - Switch between mono and stereo broadcast.
- ⑱ **▲ / ▼**
 - Select a preset radio station.
 - Skip to the previous or next album.
- ⑲ **FM**
 - Select FM tuner source.

3 Get started



Caution

- Use of controls or adjustments or performance of procedures other than herein may result in hazardous radiation exposure or other unsafe operation.

Always follow the instructions in this chapter in sequence.

Placement

You can place the unit on a flat surface or mount the unit on a wall.

Mount on a wall

See the wall mounting instructions included in the package.

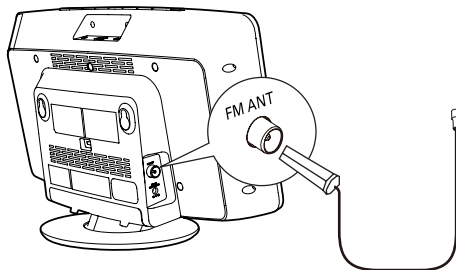
Connect FM antenna



Tip

- For optimal reception, fully extend and adjust the position of the antenna.

Connect the supplied FM antenna to the **FM ANT** socket on the main unit.



Prepare the remote control

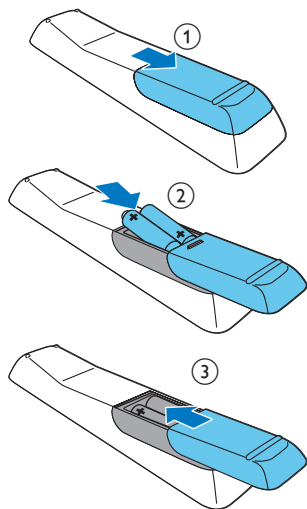


Caution

- Risk of explosion! Keep batteries away from heat, sunshine or fire. Never discard batteries in fire.
- Risk of decreased battery life! Never mix different brands or types of batteries.
- Risk of product damage! When the remote control is not used for long periods, remove the batteries.

To install the remote control battery:

- 1 Open the battery compartment.
- 2 Insert 2 AAA batteries with correct polarity (+/-) as indicated.
- 3 Close the battery compartment.



Connect power



Caution

- Risk of product damage! Ensure that the power supply voltage corresponds to the voltage printed on the back or the underside of the unit.
- Risk of electric shock! When you unplug the AC power adapter, always pull the plug from the socket. Never pull the cord.
- Before connecting the AC adapter, ensure that you have completed all other connections.

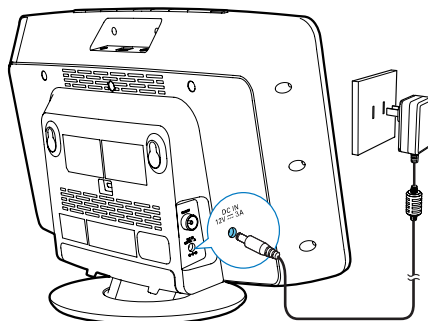


Note

- The type plate is located at the back of the main unit.

Connect the power adapter to:

- the **DC IN** socket on the main unit.
- the wall socket.



Store FM radio stations automatically

When the unit turns to FM tuner mode, and no radio stations are stored, the unit begins to store FM radio stations automatically.

- 1 Connect the unit to the power supply.
↳ [AUTO INSTALL - PRESS PLAY, STOP CANCEL] (to auto install, press ►► ; to cancel, press ■) is displayed.
- 2 Press and hold ►► for 3 seconds to start full scan.
↳ The unit automatically stores FM radio stations with sufficient signal strength and then broadcasts the first preset station.



Tip

- To exit storing mode, press ⏻ or ■.

Set clock

- 1 In standby mode, press and hold **CLOCK SET** on the remote control for two seconds.
↳ [SET CLOCK] (set clock) scrolls on the display.
- 2 Press **CLOCK SET** again.
↳ The 12 or 24 hour format blinks.
- 3 Press ◀◀ / ▶▶ repeatedly to select an hour format.
- 4 Press **CLOCK SET** to confirm.
↳ The hour digits blink.
- 5 Repeat steps 3-4 to set the hour and minute respectively.



Note

- If no button is pressed in 90 seconds, the unit exits clock setting mode automatically.

Turn on

Press ⏻.

- ↳ The unit switches to the last selected source.



Note

- To select a source, press **SOURCE** repeatedly or the source selection buttons on the remote control.

Switch to standby mode

Press ⏻ again to switch the unit to standby mode.

- ↳ The clock (if set) appears on the display panel.

4 Play

Play disc

- 1 Press **▲** to open the disc compartment.
- 2 Insert a disc with the printed side facing up.
- 3 Press **▲** to close the disc compartment.
- 4 Press **CD** on the remote control to select the disc source.
 - ↳ **[Reading]** (reading) blinks for a moment, then CD starts playing automatically. If not, press **▶||**.

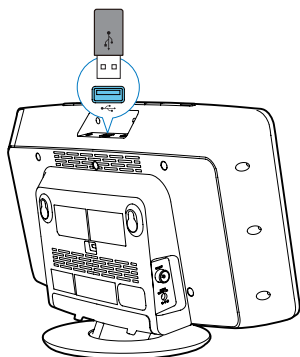
Play from USB



Note

- Make sure that the USB device contains playable audio content.

- 1 Insert the USB device into the  socket.



- 2 Press **USB** on the remote control to select the USB source.
 - ↳ Play starts automatically. If not, press **▶||**.

Play from iPod/iPhone/iPad

You can enjoy audio from iPod/iPhone/iPad through this unit.

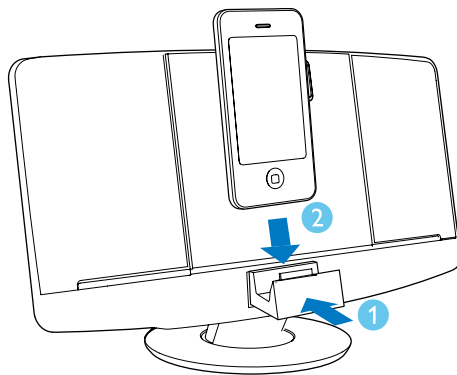
Compatible iPod/iPhone/iPad

The unit supports the following iPod, iPhone and iPad models:

Made for:

- iPod touch (1st, 2nd, 3rd, and 4th generation)
- iPod nano (2nd, 3rd, 4th, 5th, and 6th generation)
- iPhone 4
- iPhone 3GS
- iPhone 3G
- iPhone
- iPad 2
- iPad

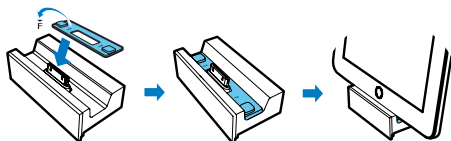
Load the iPod/iPhone/iPad



- 1 Push the dock compartment to open it.
- 2 Place the iPod/iPhone/iPad in the dock.

Install the rubber pad

If necessary, install the supplied rubber pad to keep the iPod/iPad 2 stable before you place the iPod/iPad 2.



Listen to the iPod/iPhone/iPad

- 1 Make sure that the iPod/iPhone/iPad is loaded correctly.
- 2 Press **SOURCE** repeatedly or **DOCK** on the remote control to select iPod/iPhone/iPad source.
- 3 Play tracks in the iPod/iPhone/iPad.
 - To pause/resume play, press **▶||**.
 - To skip to a track, press **◀◀ / ▶▶**.
 - To search during play, press and hold **◀◀ / ▶▶**, then release to resume normal play.
 - To go back to the previous iPod/iPhone menu, press **MENU**.
 - To scroll through the menu, press **▲ / ▼**.
 - To confirm a selection, press **OK**.

Remove the iPod/iPhone/iPad

Pull the iPod/iPhone/iPad out of the dock.

Charge the iPod/iPhone/iPad



Note

- iPod with color display, iPod classic, and iPod with video are not compatible with dock charging.

When the unit is connected to power, the docked iPod/iPhone/iPad begins to charge.



Tip

- For certain iPod models, it may take up to a minute before the charging indication appears.

Play options

Pause/resume play

During play, press **▶||** to pause/resume play.

Repeat/shuffle play

- 1 During play, press **REPEAT/SHUFFLE** repeatedly to select:
 - **↺** : play the current track repeatedly.
 - **↺ALB** (for MP3/WMA only): play all tracks in this album repeatedly.
 - **↺ALL** : play all tracks repeatedly.
 - **↻** : play all tracks randomly.
- 2 To resume normal play, press **REPEAT/SHUFFLE** repeatedly until the above icons disappear.

Skip to a track

For CD:

Press **◀◀ / ▶▶** to select another track.

For MP3 disc and USB:

- 1 Press **▲ / ▼** to select an album or a folder.
- 2 Press **◀◀ / ▶▶** to select a track/file.



Tip

- To select a track directly, you can also press a key on the numerical keypad.

Search within a track

- 1 During play, press and hold **◀◀ / ▶▶**.
- 2 Release to resume normal play.

Program tracks

You can program a maximum of 20 tracks.

- 1 In CD/USB mode, press **■** to stop playback, then press **PROG** to activate the programming mode.
↳ **[PROG]** (program) is displayed.
- 2 For MP3/WMA tracks, press **▲** / **▼** to select an album.
- 3 Press **◀◀** / **▶▶** to select a track, then press **PROG** to confirm.
- 4 Repeat steps 2 to 3 to program more tracks.
- 5 Press **▶||** to play the programmed tracks.
↳ During play, **[PROG]** (program) is displayed.
 - To erase the program, when playback is stopped, press **■**.

Adjust sound

During play, you can adjust volume and select sound effects.

Function	Action
To increase/decrease volume	Press VOL +/- .
To mute/restore sound	Press 🔇 .
To turn dynamic bass enhancement on/off	Press DBB .
To select a sound effect: [POP] (pop) [JAZZ] (jazz) [CLASSIC] (classic) [ROCK] (rock) [FLAT] (flat)	Press DSC repeatedly.

Display different information

During play, press **DISPLAY** repeatedly to view time and different play information.

5 Listen to FM radio

Tune to FM radio stations



Note

- Position the antenna as far as possible from TV, VCR, or other radiation source.
- Ensure that you have connected and fully extended the supplied FM antenna.

- 1 Press **FM** to select FM tuner mode.
- 2 Press and hold **◀◀** / **▶▶** for 3 seconds.
↳ **[SEARCH]** (search) is displayed.
↳ The unit tunes to an FM station with strong reception automatically.
- 3 Repeat step 2 to tune to more stations.

To tune to a weak station:

Press **◀◀** / **▶▶** repeatedly until you find optimal reception.

Program FM radio stations automatically



Note

- You can program a maximum of 20 preset FM radio stations.

In FM tuner mode, press and hold **PROG** for 3 seconds.

- ↳ **[AUTO]** (auto) is displayed.
- ↳ The unit stores all the FM radio stations automatically and then broadcasts the first preset radio station.

Program FM radio stations manually

- 1 In tuner mode, tune to an FM radio station.
- 2 Press **PROG** to activate programming mode.
↳ **[PROG]** (program) blinks.
- 3 Press **▲** / **▼** repeatedly to select a channel number.
- 4 Press **PROG** again to confirm.
- 5 Repeat steps 1-4 to store other FM stations.

Note

- To remove a pre-stored station, store another station in its place.

Select a preset radio station

In tuner mode, press **▲** / **▼** or the numeric buttons to select a preset number.

Select stereo/mono broadcast

Note

- Stereo broadcast is the default setting for tuner mode.
- For stations with weak signals: to improve the reception, change to monaural sound.

In FM tuner mode, press **OK** to switch between mono and stereo broadcast.

6 Other features

Set the alarm timer

This unit can be used as an alarm timer. You can select CD, FM tuner, iPod/iPhone/iPad, or USB as alarm source.


Note

- Make sure that you have set the clock correctly.

- 1 In standby mode, press and hold **TIMER** until **[SET TIMER]** (set timer) scrolls on the display.
↳ **[SELECT SOURCE]** (select source) is displayed.
- 2 Press **SOURCE** repeatedly or the source selection buttons on the remote control to select a source: disc, FM tuner, iPod/iPhone/iPad, or USB.
- 3 Press **TIMER** to confirm.
↳ The hour digits blink.
- 4 Press **◀◀** / **▶▶** repeatedly to set the hour.
- 5 Press **TIMER** to confirm.
↳ The minute digits blink.
- 6 Repeat steps 4-5 to set the minute and alarm volume.

Note

- If no button is pressed in 90 seconds, the unit exits alarm setting mode automatically.
- If iPod/iPhone/iPad is selected as alarm source, and you have created a playlist called "PHILIPS" in iTunes and import it to your iPod/iPhone/iPad, you will wake to a random track in the playlist.
- If no "PHILIPS" playlist is created in the iPod/iPhone/iPad or no track is stored in the playlist, you will wake to your last listened track in the iPod/iPhone/iPad.

To activate or deactivate the alarm timer,
In standby mode, press **TIMER** repeatedly to
activate or deactivate the alarm.
→  appears when the timer is activated.



Tip

- If CD/USB/iPod source is selected, but no disc is inserted or no USB/ipod/iPhone/iPad connected, the unit switches to the tuner source automatically.

Set the sleep timer



Note

- Make sure that you have set the clock correctly.

When the unit is turned on, press **SLEEP**
repeatedly to select the sleep timer period (in
minutes).


→ When sleep timer is activated, **zZ** is
displayed.



Tip

- To deactivate the sleep timer, press **SLEEP** repeatedly until **[OFF]** (off) is displayed.

Listen through the headphone

Plug a headphone into the  socket on the unit.

Play from external audio device

With this unit, you can play audio from an
external audio device like MP3 player.

- 1 Connect the supplied MP3 Link cable to
 - the **MP3-LINK** socket.
 - the audio output socket of an external device.
- 2 Press **USB/MP3 LINK** repeatedly to select MP3 link mode.
- 3 Start to play the external device (see the device's user manual).

7 Product information



Note

- Product information is subject to change without prior notice.

Specifications

Amplifier

Rated Output Power	2 X 10 W RMS
Frequency Response	80 Hz - 16 kHz, ± 3 dB
Signal to Noise Ratio	≥60 dB
MP3 Link Input	0.5 V RMS 20 kohm

Disc

Laser Type	Semiconductor
Disc Diameter	12 cm/8 cm
Support Disc	CD-DA, CD-R, CD-RW, MP3-CD, WMA-CD
Audio DAC	24 Bits/44.1 kHz
Total Harmonic Distortion	
Distortion	<1.5 % (1 kHz)
Frequency Response	60 Hz - 16 kHz
S/N Ratio	>55 dBA

Tuner (FM)

Tuning range	87.5 - 108 MHz
Tuning grid	50 KHz
Sensitivity	
- Mono, 26dB S/N Ratio	<22 dBf
- Stereo, 46dB S/N Ratio	>43 dBf

Search selectivity	>28 dBf
Total harmonic distortion	<3%
Signal to noise ratio	>50 dB
Number of presets	20

General information

AC power	Model: AS360-120-AA300; Input: 100 - 240 V ~, 50/60 Hz, 1.2 A; Output: 12 V = 3.0 A
Operation Power Consumption	25 W
Standby Power Consumption	≤1 W
Dimensions - Main Unit (W x H x D)	400 x 235 x 98 mm
Weight - With Packing - Main Unit	3.7 kg 2.2 kg

USB playability information

Compatible USB devices:

- USB flash memory (USB1.1)
- USB flash players (USB1.1)
- memory cards (requires an additional card reader to work with this unit)

Supported formats:

- USB or memory file format: FAT12, FAT16, FAT32 (sector size: 512 bytes)
- MP3 bit rate (data rate): 32-320 Kbps and variable bit rate
- WMA v9 or earlier
- Directory nesting up to a maximum of 8 levels
- Number of albums/ folders: maximum 99
- Number of tracks/titles: maximum 999
- ID3 tag v2.0 or later
- File name in Unicode UTF8 (maximum length: 16 bytes)

Unsupported formats:

- Empty albums: an empty album is an album that does not contain MP3/WMA files, and is not be shown in the display.
- Unsupported file formats are skipped. For example, Word documents (.doc) or MP3 files with extension .dlf are ignored and not played.
- AAC, WAV, PCM audio files
- DRM protected WMA files (.wav, .m4a, .m4p, .mp4, .aac)
- WMA files in Lossless format

Supported MP3 disc formats

- ISO9660, Joliet
- Maximum title number: 999 (depending on file name length)
- Maximum album number: 99
- Supported sampling frequencies: 32 kHz, 44.1 kHz, 48 kHz
- Supported Bit-rates: 32~320 (kbps), variable bit rates

8 Troubleshooting



Warning

- Never remove the casing of this apparatus.

To keep the warranty valid, never try to repair the system yourself.

If you encounter problems when using this apparatus, check the following points before requesting service. If the problem remains unsolved, go to the Philips web site (www.philips.com/support). When you contact Philips, ensure that the apparatus is nearby and the model number and serial number are available.

No power

- Ensure that the AC power adapter of the unit is connected properly.
- Ensure that there is power at the AC outlet.
- As a power-saving feature, the system switches off automatically 15 minutes after track play reaches the end and no control is operated.

No sound

- Adjust the volume.

No response from the unit

- Disconnect and reconnect the AC power plug, then turn on the unit again.
- As a power-saving feature, the system switches off automatically 15 minutes after track play reaches the end and no control is operated.

Remote control does not work

- Before you press any function button, first select the correct source with the remote control instead of the main unit.
- Reduce the distance between the remote control and the unit.
- Insert the battery with its polarities (+/- signs) aligned as indicated.
- Replace the battery.

- Aim the remote control directly at the sensor on the front of the unit.

No disc detected

- Insert a disc.
- Check if the disc is inserted upside down.
- Wait until the moisture condensation at the lens has cleared.
- Replace or clean the disc.
- Use a finalized CD or correct format disc.

Cannot display some files in USB device

- The number of folders or files in the USB device has exceeded a certain limit. This phenomenon is not a malfunction.
- The formats of these files are not supported.

USB device not supported

- The USB device is incompatible with the unit. Try another one.

Poor radio reception

- Increase the distance between the unit and your TV or VCR.
- Fully extend the FM antenna.

Timer does not work

- Set the clock correctly.
- Switch on the timer.

Clock/timer setting erased

- Power has been interrupted or the power cord has been disconnected.
- Reset the clock/timer.

9 Notice

Any changes or modifications made to this device that are not expressly approved by Philips Consumer Lifestyle may void the user's authority to operate the equipment.

Disposal of your old product and batteries

Your product is designed and manufactured with high quality materials and components, which can be recycled and reused. Never dispose of your product with other household waste. Please inform yourself about the local rules on the separate collection of electrical and electronic products and batteries. The correct disposal of these products helps prevent potentially negative consequences on the environment and human health.

Your product contains batteries, which cannot be disposed of with normal household waste. Please inform yourself about the local rules on separate collection of batteries. The correct disposal of batteries helps prevent potentially negative consequences on the environment and human health.

Please visit www.recycle.philips.com for additional information on a recycling center in your area.

Environmental information

All unnecessary packaging has been omitted. We have tried to make the packaging easy to separate into three materials: cardboard (box), polystyrene foam (buffer) and polyethylene (bags, protective foam sheet.)

Your system consists of materials which can be recycled and reused if disassembled by a specialized company. Please observe the local regulations regarding the disposal of packaging materials, exhausted batteries and old equipment.



Be responsible
Respect copyrights

The making of unauthorized copies of copy-protected material, including computer programs, files, broadcasts and sound recordings, may be an infringement of copyrights and constitute a criminal offence. This equipment should not be used for such purposes.

Made for



iPod



iPhone



iPad

"Made for iPod," "Made for iPhone," and "Made for iPad" mean that an electronic accessory has been designed to connect specifically to iPod, iPhone, or iPad, respectively, and has been certified by the developer to meet Apple performance standards. Apple is not responsible for the operation of this device or its compliance with safety and regulatory standards. Please note that the use of this accessory with iPod, iPhone, or iPad may affect wireless performance.

iPod and iPhone are trademarks of Apple Inc., registered in the U.S. and other countries. iPad is a trademark of Apple Inc.

This apparatus includes this label:

**CLASS 1
LASER PRODUCT**



Specifications are subject to change without notice
© 2012 Koninklijke Philips Electronics N.V.
All rights reserved.

DCM2060_96_UM_V2.0

