



Short User Manual

PHILIPS

Safety

Know these safety symbols



This 'bolt of lightning' indicates uninsulated material within your unit may cause an electrical shock. For the safety of everyone in your household, please do not remove product covering. The 'exclamation point' calls attention to features for which you should read the enclosed literature closely to prevent operating and maintenance problems. WARNING: To reduce the risk of fire or electric shock, this apparatus should not be exposed to rain or moisture and objects filled with liquids, such as vases, should not be placed on this apparatus. CAUTION: To prevent electric shock, match wide blade of plug to wide slot, fully insert.

Warning

- Never remove the casing of this apparatus.
- Never lubricate any part of this apparatus.
- Never place this apparatus on other electrical equipment.
- Keep this apparatus away from direct sunlight, naked flames or heat.
- Ensure that you always have easy access to the power cord, plug or adaptor to disconnect the apparatus from the power.
- Use only power supplies listed in the user manual.

Caution

- Danger of explosion if battery is incorrectly replaced.
- Remove battery if it is exhausted or will not be used for a long time.
- Batteries contain chemical substances, so they should be disposed of properly.
- Perchlorate Material-special handling may apply. See www.dtsc.ca.gov/hazardouswaste/perchlorate.

- The product/remote control may contain a coin/button type battery, which can be swallowed. Keep the battery out of reach of children at all times! If swallowed, the battery can cause serious injury or death. Severe internal burns can occur within two hours of ingestion.
- If you suspect that a battery has been swallowed or placed inside any part of the body, seek immediate medical attention.
- When you change the batteries, always keep all new and used batteries out of reach of children. Ensure that the battery compartment is completely secure after you replace the battery.
- If the battery compartment cannot be completely secured, discontinue use of the product. Keep out of reach of children and contact the manufacturer.
- Batteries (battery pack or batteries installed) shall not be exposed to excessive heat such as sunshine, fire or the like.
- Battery usage CAUTION – To prevent battery leakage which may result in bodily injury, property damage, or damage to the remote control:
 - Do not mix batteries (old and new or carbon and alkaline, etc.).
 - Remove batteries when the remote control is not used for a long time.
- Make sure that there is enough free space around the product for ventilation.
- The system shall not be exposed to dripping or splashing.
- Do not place any sources of danger on the system (e.g. liquid filled objects, lighted candles).
- Where the MAINS plug or an appliance coupler is used as the disconnect device, the disconnect device shall remain readily operable.

Notice

Any changes or modifications made to this device that are not expressly approved by Philips Consumer Lifestyle may void the user's authority to operate the equipment.

This product complies with the radio interference requirements of the European Community.

Your product is designed and manufactured with high quality materials and components, which can be recycled and reused.

When this crossed-out wheeled bin symbol is attached to a product it means that the product is covered by the European Directive 2002/96/EC. Please inform yourself about the local separate collection system for electrical and electronic products.

Please act according to your local rules and do not dispose of your old products with your normal household waste. Correct disposal of your old product helps to prevent potential negative consequences for the environment and human health.

Your product contains batteries covered by the European Directive 2006/66/EC, which cannot be disposed with normal household waste. Please inform yourself about the local rules on separate collection of batteries because correct disposal helps to prevent negative consequences for the environment and human health.

Environmental information

All unnecessary packaging has been omitted. We have tried to make the packaging easy to separate into three materials: cardboard (box), polystyrene foam (buffer) and polyethylene (bags, protective foam sheet).

Your system consists of materials which can be recycled and reused if disassembled by a specialized company. Please observe the local regulations regarding the disposal of packaging materials, exhausted batteries and old equipment.



"Made for iPod," "Made for iPhone," and "Made for iPad" mean that an electronic accessory has been designed to connect specifically to iPod, iPhone, or iPad, respectively, and has been certified by the developer to meet Apple performance standards. Apple is not responsible for the operation of this device or its compliance with safety and regulatory standards. Please note that the use of this accessory with iPod, iPhone, or iPad may affect wireless performance. iPod and iPhone are trademarks of Apple Inc., registered in the U.S. and other countries. iPad is a trademark of Apple Inc.

Class II equipment symbol:



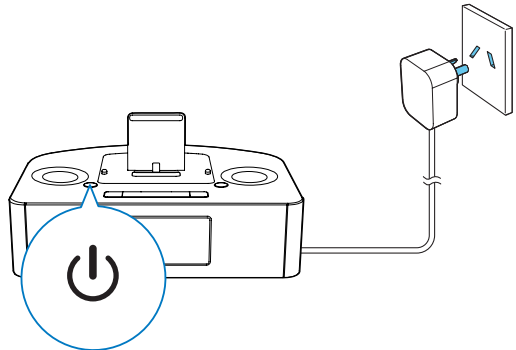
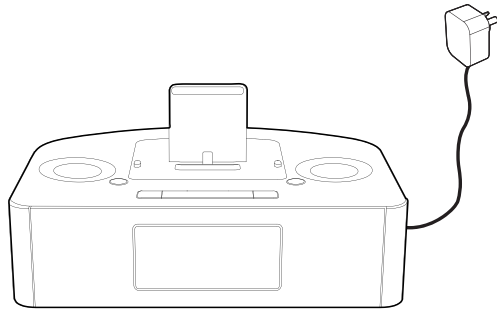
CLASS II apparatus with double insulation, and no protective earth provided.

Note

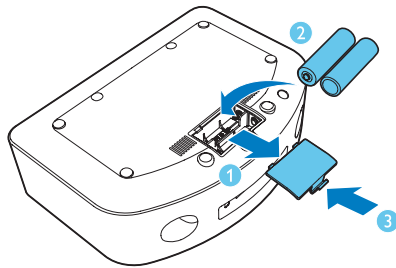
- The type plate is located on the bottom of the unit.

Specifications

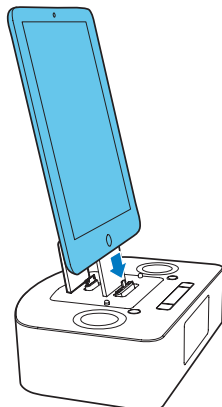
Total output power	8 W
Frequency Response	80 Hz -16 kHz, ±3dB
Signal to Noise Ratio	≥67dBA
Aux Input (Audio in)	0.6 V RMS 20kohm
Tuning Range	FM 87.5 - 108 MHz
Tuning grid	50 KHz
- Mono, 26dB quieting sensitivity	<22 dBf
- Stereo, 46dB quieting sensitivity	<51 dBf
Search Sensitivity	<41 dBf
Total Harmonic Distortion	<2%
Signal to Noise Ratio	FM: >45 dB
Speaker Impedance	4 ohm
Speaker Driver	57mm
Sensitivity	>84dB/m/W
AC power	230-240V~, 50/60 Hz
Operation Power Consumption	44 W
Standby Power Consumption (clock display)	<1 W
Dimensions - Main Unit (W x H x D)	260 x 138 x 185 mm
Weight (Main unit, without packing)	1.13 kg



Tip: Press **⏻** again to switch the unit to standby mode.

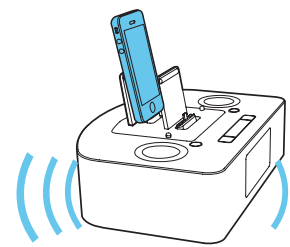


You can only use AC power as power supply. Batteries (not supplied) are for backup purpose.



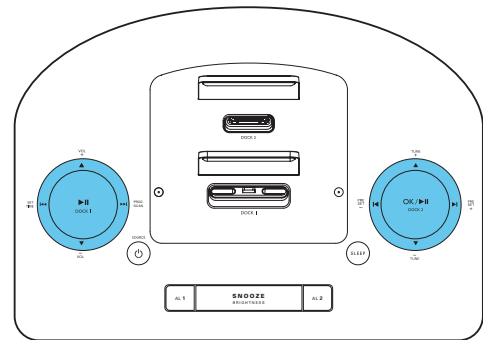
Dock 1

- iPod nano (7th generation)
- iPod touch (5th generation)
- iPad (4th generation)
- iPad mini
- iPhone 5



Dock 2

- iPod nano (2nd/3rd/4th/5th/6th generation)
- iPod classic
- iPod touch (1st/2nd/3rd/4th generation)
- iPad (3rd generation)
- iPad 2
- iPad
- iPhone 4S
- iPhone 4
- iPhone 3GS
- iPhone 3G
- iPhone

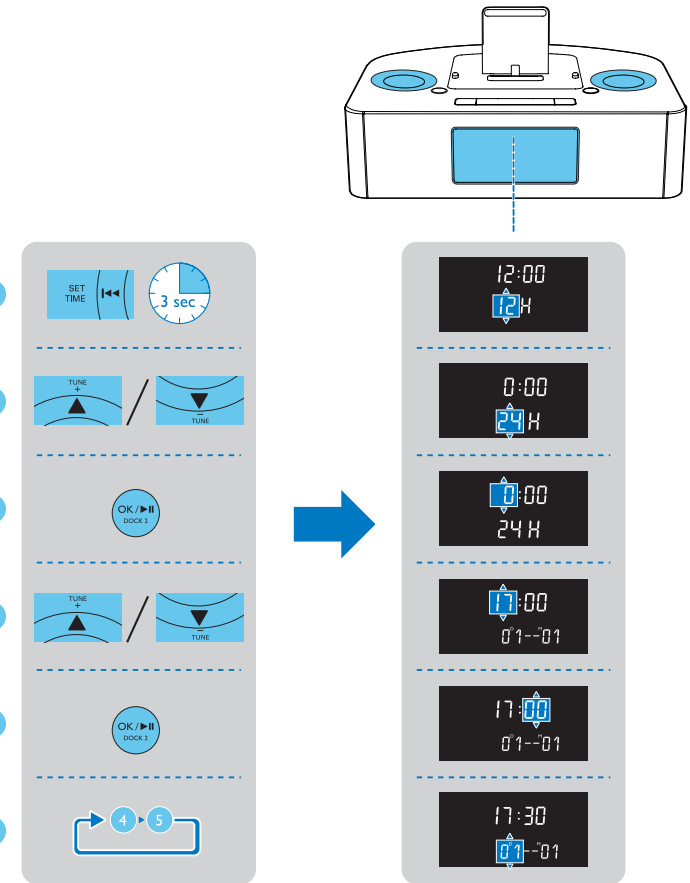


Listen to the iPod/iPhone/iPad

Press **SOURCE** repeatedly to select DOCK 1 or DOCK 2 mode.

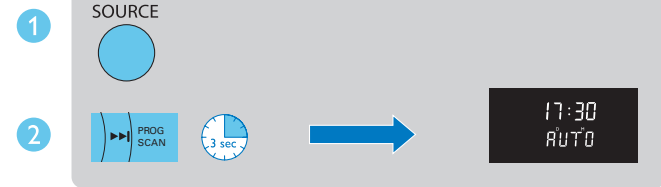
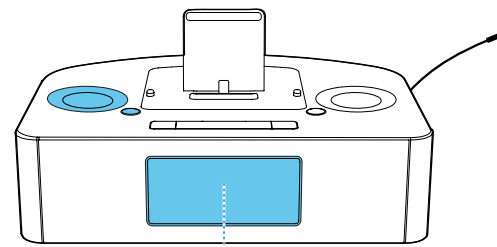
- To pause/resume play, press **⏮** or **⏭**.
- To skip to a track, press **⏮** or **⏭**.
- To search during play, press and hold **⏮** or **⏭** or **PRESET** +/- / **PRESET** -, then release to resume normal play.

During play, press **SET TIME** repeatedly to select from a preset sound effect and turn on/off dynamic bass enhancement.

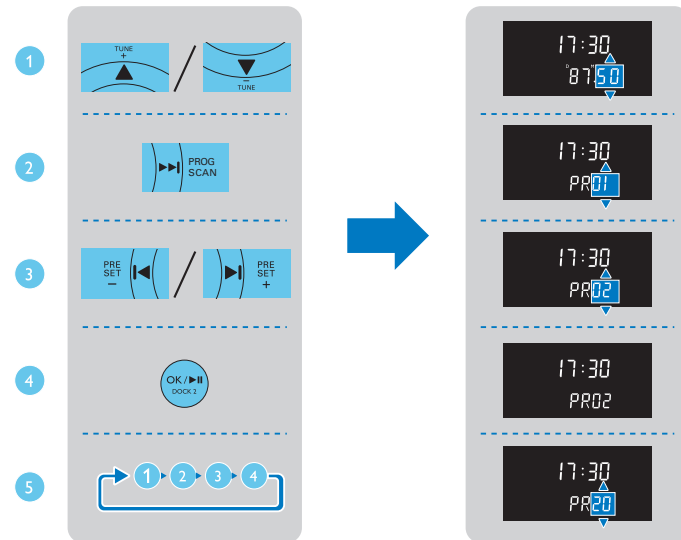


- 1 In standby mode, press and hold **SET TIME** for 3 seconds.
- 2 Press **TUNE+ / TUNE-** to select the 12/24 hour format.
- 3 Press **OK** to confirm.
- 4 Press **TUNE+ / TUNE-** to set the hour.
- 5 Press **OK** to confirm.
- 6 Repeat steps 4-5 to set the minute, day, month, and year.



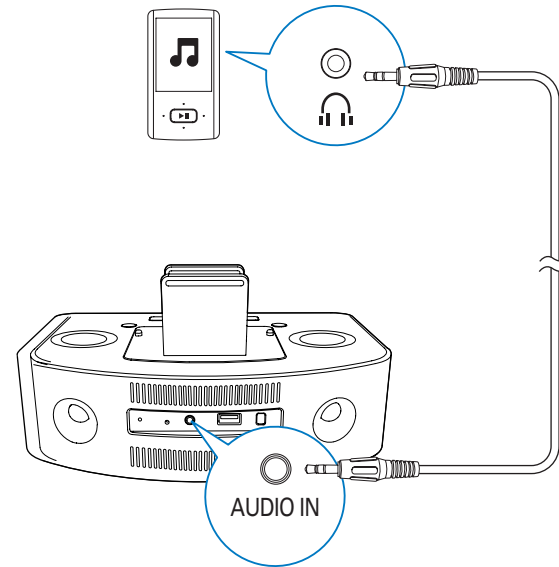


Store FM radio stations automatically
In the tuner mode, press and hold **PROG** for more than 3 seconds to activate automatic program mode.



Store FM radio stations manually
1 Tune to a radio station.
2 Press **PROG** to activate the program mode.
3 Press **◀/▶** to select a number.
4 Press **OK** to confirm.
5 Repeat the above steps to program other stations.

Select a preset radio station
Press **◀/▶** to select a preset number.



PHILIPS
sense and simplicity

Philips Electronics Australia Limited and Philips New Zealand Limited
Warranty against Defects

In this warranty:

We or **us** means Philips Electronics Australia Limited ACN 008 445 743 or Philips New Zealand Limited (Company Number 1723), and our contact details are set out at the end of this warranty;

You means the purchaser or the original end-user of the Goods;

Supplier means the authorised distributor or retailer of the Goods that sold you the Goods in Australia or New Zealand; and

Goods means the product or equipment which was accompanied by this warranty and purchased in Australia or New Zealand.

If you require assistance with the operation of the product, its features or specifications please call the Philips Consumer Care Centre on 1300 363 391 in Australia or 0800 658 224 in New Zealand.

Australia: Our Goods come with guarantees that cannot be excluded under the Australian Consumer Law. You are entitled to a replacement or refund for a major failure and for compensation for any other reasonably foreseeable loss or damage. You are also entitled to have the Goods repaired or replaced if the goods fail to be of acceptable quality and the failure does not amount to a major failure. This is not a complete statement of your legal rights as a consumer.

New Zealand: Our Goods come with guarantees that cannot be excluded under the Consumer Guarantees Act 1993. This guarantee applies in addition to the conditions and guarantees implied by that legislation.

Additional Warranty:

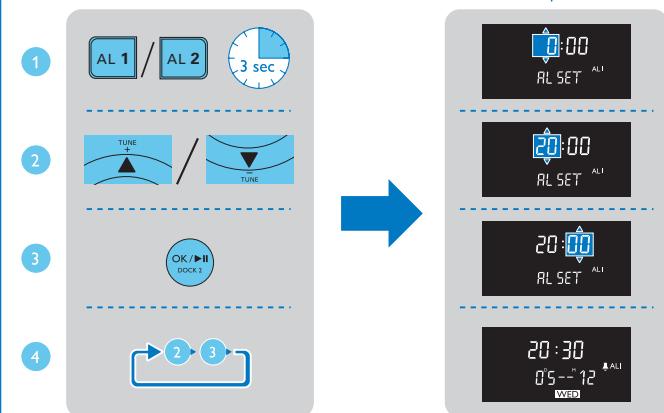
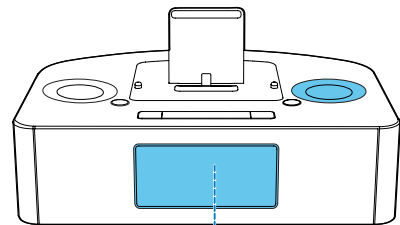
In addition to the rights and remedies that you have under the Australian Consumer Law, Consumer Guarantees Act of New Zealand or any other applicable law, we provide the following warranty against defects:

- If, during the first 12 months from their date of purchase from the Supplier (**Warranty Period**), the Goods prove defective by reason of improper workmanship or materials and none of your statutory rights or remedies apply, we will repair or replace the Goods without charge.
- We do not have to repair or replace the Goods under this Additional Warranty if the Goods have been used for a commercial purpose; misused, improperly or inappropriately installed, operated or repaired; abused; damaged; or not maintained in accordance with the manufacturer's instructions.
- Even when we do not have to repair or replace the Goods, we may decide to do so anyway. In some cases, we may decide to substitute the Goods with a similar alternative product of our choosing. All such decisions are at our absolute discretion.
- All such repaired, replaced or substituted Goods continue to receive the benefit of this Additional Warranty for the time remaining on the original Warranty Period.
- This Additional Warranty is limited to repair, replacement or substitution only. As far as the law permits, we will not be liable for any loss or damage caused to property or persons arising from any cause whatsoever.
- In order to claim under this Additional Warranty you must telephone us on 1300 363 391 in Australia or 0800 658 224 in New Zealand within the Warranty Period. You will be asked for details of the Goods, a description of the defect and your personal details. Upon accepting your claim, we shall assist you with either returning the Goods to the Supplier for replacement or to the most convenient Philips Authorised Service Centre for your Goods to be repaired. In some case we may require that you return to the Goods to us (at the address below) for repair, replacement or substitution.
 - All returned Goods must be accompanied by satisfactory proof of purchase which clearly indicates the name and address of the Supplier, the date and place of purchase and identifies product. It is best to provide a legible and unmodified receipt or sales invoice.
 - You must bear any expense for return of the Goods or otherwise associated with making your claim under this Additional Warranty.
- This warranty is only valid and enforceable in Australia and New Zealand.

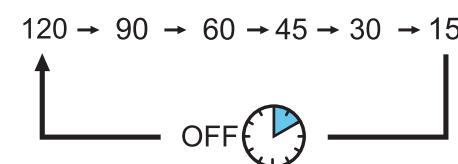
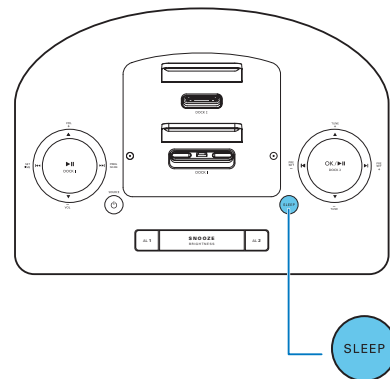
Contact us or the place of purchase for further details.

Philips Electronics Australia Limited
Level 1, 65 Epping Rd,
North Ryde, SYDNEY NSW 2113
Consumer Care: 1300 363 391
E-mail: pceinfo.australia@philips.com
Website: www.philips.com/support

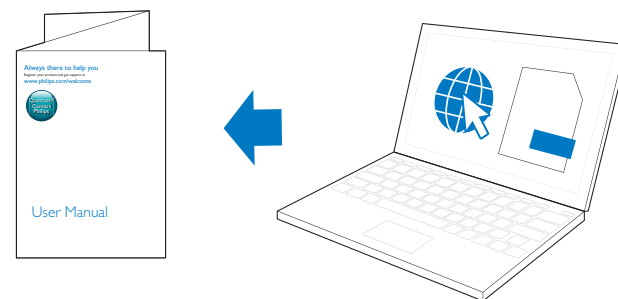
Philips New Zealand Limited
Level 2, 1 Nugent St,
Grafton, AUCKLAND, 1023
Consumer Care: 0800 658 224
Email: pceinfo.australia@philips.com
Website: www.philips.com/support



- Press and hold **AL 1/AL 2** for 3 seconds.
- Press **TUNE+/TUNE-** to set the hour.
- Press **OK** to confirm.
- Repeat steps 2-3 to set the minute, select when to ring the alarm, choose alarm sound source, and set alarm volume.



When the system is turned on, press it to select the sleep timer period.
When [OFF] is displayed, the sleep timer is deactivated.



To download the full user manual, visit www.philips.com/support.

