

# Philips SPC 300NC PC Camera

## Instructions for use



**PHILIPS**

## Introduction

### Philips SPC 300NC PC Camera

The Philips SPC 300NC PC Camera you have just purchased is manufactured to the highest standards and will give you years of trouble-free use. Brilliant images and blazing colours, that's what you get with the SPC 300NC PC Camera. Forget about installing interface cards and separate power supplies, because you don't need them any more. Power is supplied direct to the camera through the USB cable and the camera returns audio and video straight to your PC!

After installation, the new camera can be used for all sorts of applications, such as:

- **Video conferencing:** use the Philips SPC 300NC PC Camera for video chatting and conferencing (the Philips SPC 300NC PC Camera works with MSN Messenger; Yahoo! Messenger; AOL Messenger; Windows NetMeeting and Windows Messenger);
- **Video e-mail / Video capture:** create your own video presentations, video mail, product demonstrations, training videos, Internet clips etc.;
- **Snapshot images:** use images in presentations, create postcards, or send them via e-mail or on diskette. The camera works with all applications that use the TWAIN interface to acquire an image.
- **Editing and special effects:** after recording the images you want with the Philips SPC 300NC PC Camera, the images can be easily edited using image or video editing programs.

The following sections in this manual give a step-by-step description of the installation process and explain how to use the Philips SPC 300NC PC Camera.

Contents

**Introduction.....2**

**1. Things you should know .....4-5**

    Safety precautions.....4

    Copyright.....4

    Pack contents.....5

**2. Functional overview.....6**

**3. Installation .....7-9**

    Installing the camera software .....7-8

    Connecting the camera to your PC.....9

**4. Camera settings.....10-13**

    General controls.....10

    Picture controls.....11-12

    Audio controls.....13

**5. Using the applications .....14-17**

    VLounge .....14

    MSN Messenger .....14

    Yahoo! Messenger.....15

    AOL Instant Messenger.....15

    Microsoft Netmeeting.....16-17

    Making snapshots using Windows® XP .....17

**6. Technical specifications.....18**

**7. Important information.....19-20**

    Disclaimer.....19

    FCC compliance .....19

    Environmental information .....20

    System requirements .....20

    Disclaimer of warranty.....20

    Limitation of damages .....20

**8. Helpline .....21**

**9. Warranty .....22**

## 1. Things you should know

Please read the following instructions carefully, and retain them for future reference. It may be helpful to have the instructions for use for the PC at hand for reference.

---

### Safety precautions

Observe the following guidelines to ensure that the camera will operate safely and to prevent defects.

- Do not use your camera in environments outside the following range: temperature: 0°C to 40°C, relative humidity: 45% ~ 85%.
- Do not use or store your camera in/under:
  - direct sunlight exposure;
  - very humid and dusty environment;
  - near any kind of heat sources;
- If your camera gets wet, dry it with soft cloth as soon as possible.
- If the lens or viewfinder is dirty, please use the lens brush or soft cloth to clean the lens. Do NOT touch the lens with your fingers.
- Clean the outside of the camera with a soft cloth.
- Do NOT use cleaning fluids based on alcohol, methylated spirit, ammonia, etc.
- Do NOT attempt to disassemble or repair your camera by yourself. Do not open the camera. In the event of technical difficulties return it to your Philips retailer.
- Do NOT use your camera in the water.
- Protect the camera from oil, vapour, steam, moisture, and dust.
- Never point the camera lens at the sun.

---

### Copyright

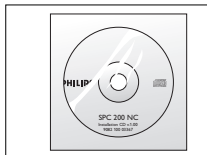
Copyright© 2003 by Philips Consumer Electronics B.V. All rights reserved. No part of this publication may be reproduced, transmitted, transcribed, stored in a retrieval system or translated into any language or computer language, in any form or by any means, electronic, mechanical, magnetic, optical, chemical, manual or otherwise, without prior written permission from Philips. Brands and product names are trademarks or registered trademarks of their respective companies.

## Pack contents

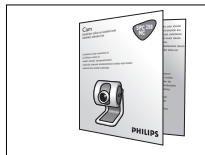
Please check that the following items are packed in the Philips SPC 300NC box. They are provided to help you set up and use your Philips SPC 300NC.



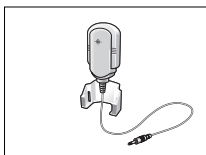
*Philips SPC 300NC  
PC Camera*



*Installation CD-ROM  
including manual*

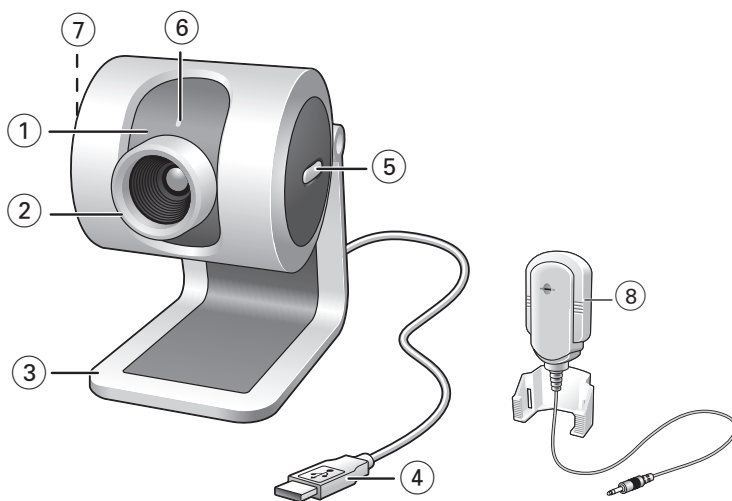


*Quick Installation Guide*



*Microphone*

## 2. Functional overview



### 1 **Rotating lens**

For manually changing the vertical angle of the camera.

### 2 **Focus ring**

For adjusting the focus of the image manually.

### 3 **Desktop stand**

For stable desktop placement of the SPC 300NC PC Camera.

### 4 **USB cable**

For connecting the camera to the USB port of the PC.

The camera will derive its power from the PC when a USB connection is made.

### 5 **Snapshot button**

Enables you to take photos without using your mouse.

### 6 **Power LED**

Lights up blue when the camera is in use.

### 7 **Quicklaunch button**

For quick and easy start-up of the V-Lounge software.

### 8 **Microphone**

For adding voice and sound when video chatting and video recording.

### 3. Installation

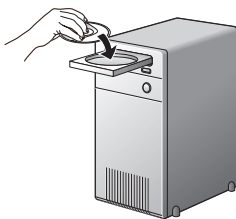
#### Installing the camera software

The software supplied only works on PCs with the operating systems Microsoft® Windows® 98SE, ME, 2000 and XP.

#### Notes!

- Unplug all your USB devices (except USB keyboard and USB mouse) before you start.
- Do not plug in your USB camera yet. Run the Installation CD-ROM first.
- Have your Windows® CD-ROM at hand.

#### 1 Place the installation CD-ROM in your computer's CD-ROM-/DVD drive.



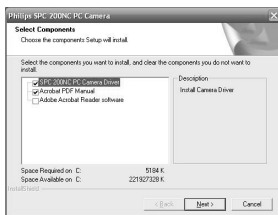
> After a couple of seconds the 'Language selection' screen appears automatically.

#### Note!

If the 'Language selection' screen does not appear automatically, open the Microsoft® Windows® Explorer and double click on the 'Autorun.exe' icon in the CD-ROM directory.

#### 2 Select your language and click on the 'OK' button.

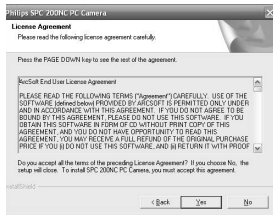
> The following screen appears.



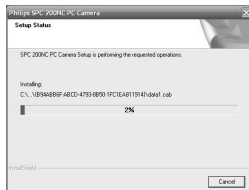
#### 3 Select at least the 'SPC 300NC PC Camera driver' and click on the 'OK' button.

> The following software license agreement appears.

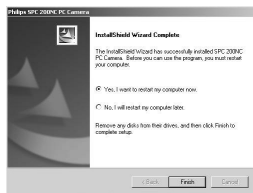
Click on 'Agree' to continue the installation.



> The following screen, including a progress bar, appears.



> The screen below appears when the installation was successful.  
You can now connect your PC Camera.



### **Note!**

The SPC 300NC PC Camera is 'XP Plug & Play'.

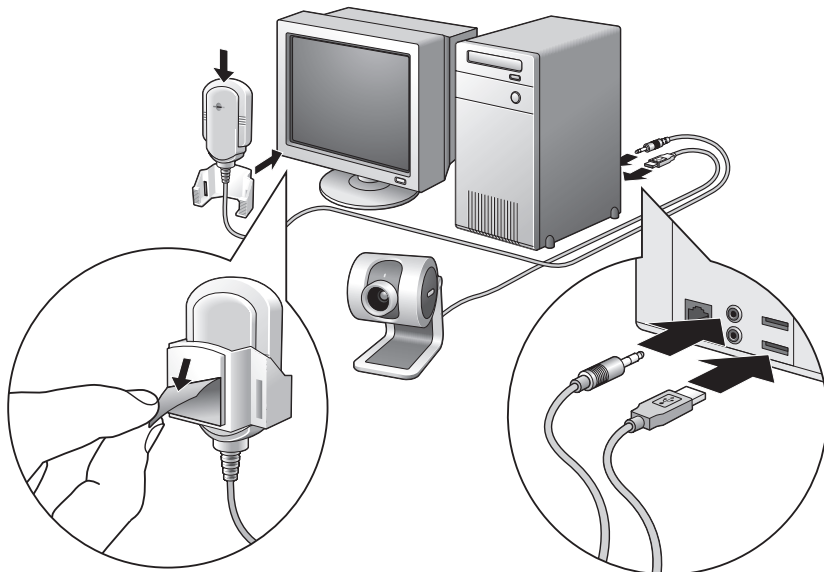
This means if you are running Windows XP and you have installed Service Pack 2 and the latest Microsoft Windows XP updates you don't need to install the SPC 300NC PC Camera driver. Simply plug in the camera and you can start using your SPC 300NC PC Camera.




---

## Connecting the camera to your PC

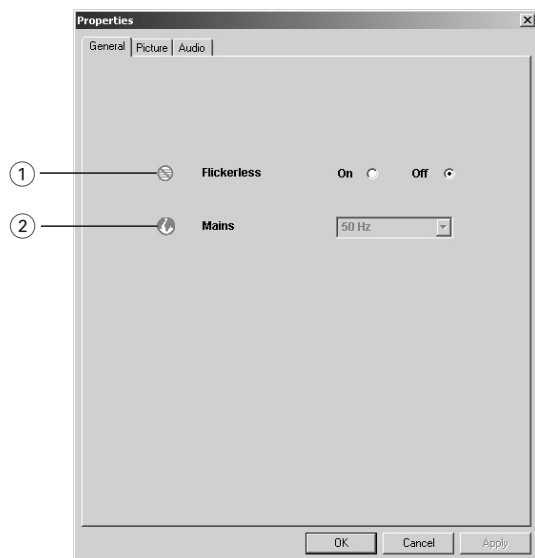
- 1 Be sure to run the installation CD *first, before* connecting the camera to the PC.
- 2 Turn on the PC.
- 3 Connect the USB plug of the USB cable to the USB port of the PC.
- 4 Peel off the protective foil on the rear of the microphone and attach the microphone to the PC monitor.
- 5 Connect the microphone plug to the Audio in socket of the PC.  
> The camera will now derive its power from the PC.



## 4. Camera settings

The Philips SPC 300NC properties (audio and video) can be changed from within an application, or independently by clicking the VProperty icon  which can be found in the Windows taskbar bottom right of your screen. Most applications can show a 'live preview' video image on your monitor. Always use this option to see the effect of changed settings on your screen.

### General controls



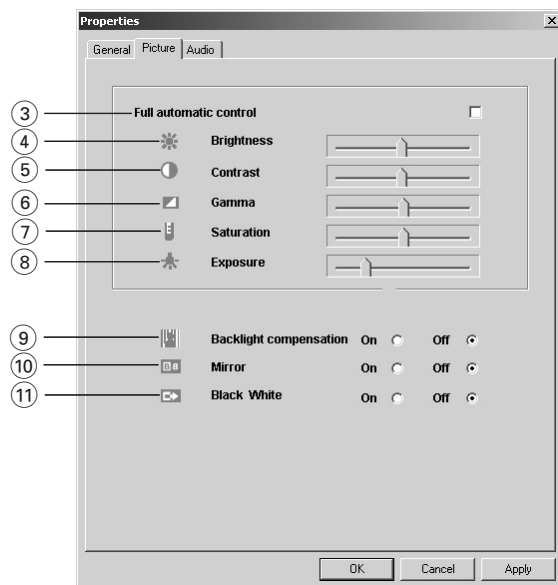
#### ① Flickerless image

The Flickerless option should only be used under flickering light conditions (e.g. fluorescent or neon lamps) to prevent flickering or strangely coloured video images. If this option is used under normal lighting conditions the video image may be overexposed.

#### ② Region

If you are using the Philips SPC 300NC in Europe, select '50 Hz' and if you are using the Philips SPC 300NC in North America, select '60 Hz'. For Asia this setting is dependent on the local mains output. E.g. for China, select '50 Hz' and for Taiwan, select '60Hz'. Please check your local mains output to find the correct 'Region' setting.

## Picture controls



### ③ Full automatic control: on/off

This full automatic control mode provides a very easy way to get the best out of your Philips SPC 300NC PC Camera. Or you can choose to have maximum manual control over the camera settings by switching the full automatic control mode off. Full automatic control 'on' is the preferred setting for normal use.

Techniques active within full automatic control mode are:

- *Automatic exposure control* and automatic white balance control, to provide the best video source signal possible;
- *Automatic frame rate selection* for improved camera sensitivity in low light conditions.

### ④ Brightness

Brightness enables you to adjust the brightness of the displayed image or video to suit your own preference. Use the slider to find your preferred setting.

### ⑤ Contrast

Contrast enables you to control the ratio between dark and light according to your own preference. Use the slider to find your preferred setting.

### ⑥ Gamma

Gamma enables you to brighten dark areas within the displayed image or video and visualize more details without over-exposing already light areas. Use the slider to find your preferred setting.

**⑦ Saturation**

Saturation enables you to set the colour reproduction from black and white to a full colour image or video according to your own preference. Use the slider to find your preferred setting.

**⑧ Exposure**

The exposure setting determines the amount of light that will fall onto the video sensor chip by controlling the gain and shutter speed;

In manual mode you can control the gain and shutter speed settings manually.

With full automatic mode 'on' the exposure controls are disabled.

**⑨ Backlight compensation**

Turn on the backlight compensation to improve the image quality when you have a scene where the background has a high illumination level (for instance when you are sitting in front of a bright light).

**⑩ Mirror**

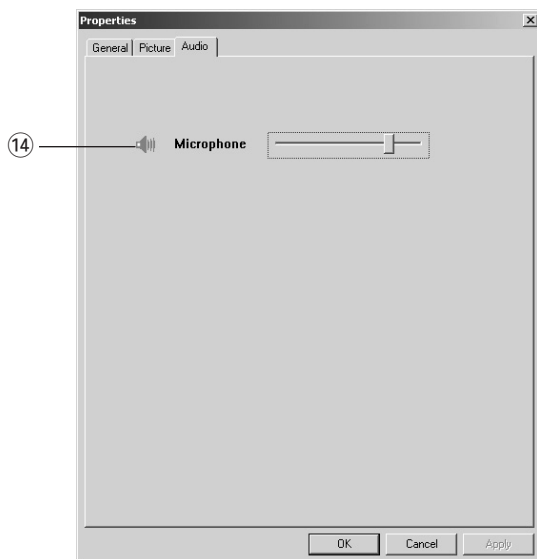
Clicking the 'Mirror Image' checkbox flips the image horizontally. You can use this feature when you want to use the Philips SPC 300NC and monitor as a mirror, or to take pictures of mirrored images.

**⑪ Black and white**

The 'Black and white' checkbox is used to switch from colour images to black and white and back.

---

## Audio controls

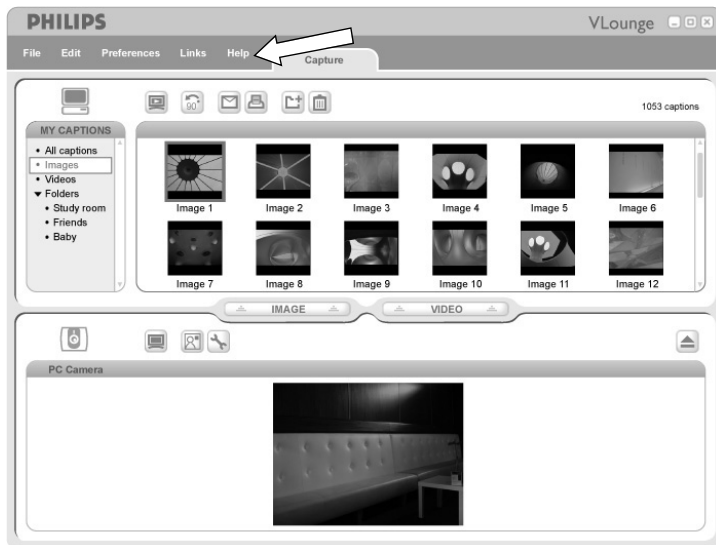


### ⑭ **Volume slider**

This slider provides manual control over the microphone volume.

## 5. Using the applications

### VLounge



For additional support read the 'Help' documentation within the 'Help' option of the menubar of VLounge.

### MSN messenger

You can download and install MSN Messenger via Microsoft MSN Messenger websites. In the list below you will find the website address for your country for downloading MSN Messenger:

USA - <http://messenger.msn.com>  
 Germany - <http://messenger.msn.de>  
 France - <http://messenger.msn.fr>  
 United Kingdom - <http://messenger.msn.co.uk>  
 Spain - <http://messenger.msn.es>  
 Portugal - <http://messenger.msn.com>  
 Italy - <http://messenger.msn.it>  
 Belgium (Dutch) - <http://messenger.msn.be>  
 Belgium (French) - <http://messenger.fr.msn.be>

Norway - <http://messenger.msn.no>  
 Finland - <http://messenger.msn.fi>  
 Sweden - <http://messenger.msn.se>  
 Denmark - <http://messenger.msn.dk>  
 The Netherlands - <http://messenger.msn.nl>  
 Austria - <http://messenger.msn.at>  
 Swiss (German) - <http://messenger.msn.ch>  
 Swiss (French) - <http://messenger.fr.msn.ch>

Please follow the on-screen instructions during downloading and installation of MSN Messenger.



---

## Yahoo! Messenger

You can download and install Yahoo! Messenger via Yahoo! Messenger websites. In the list below you will find the website address for your country for downloading Yahoo! Messenger:

USA - <http://messenger.yahoo.com>

Germany - <http://de.messenger.yahoo.com/>

France - <http://fr.messenger.yahoo.com/>

United Kingdom - <http://uk.messenger.yahoo.com>

Spain - <http://es.messenger.yahoo.com/>

Portugal - <http://messenger.yahoo.com>

Italy - <http://it.messenger.yahoo.com/>

Belgium - <http://messenger.yahoo.com>

Norway - <http://no.messenger.yahoo.com/>

Finland - <http://messenger.yahoo.com>

Sweden - <http://se.messenger.yahoo.com/>

Denmark - <http://dk.messenger.yahoo.com/>

The Netherlands - <http://messenger.yahoo.com>

Austria - <http://messenger.yahoo.com>

Swiss - <http://messenger.yahoo.com>

Please follow the on-screen instructions during downloading and installation of Yahoo! Messenger.



---

## AOL Instant Messenger

You can download and install AOL Instant Messenger via the America Online website.

Please find below the website address for downloading AOL Instant Messenger:



<http://www.aim.com/>

Please follow the on-screen instructions during downloading and installation of AOL Instant Messenger.



## Microsoft NetMeeting

Microsoft NetMeeting is a standard application that comes with your Windows operating system (from Windows 98SE onwards). Windows NetMeeting is already installed on your PC during the installation of your Windows operating system. To create a shortcut on your PC's desktop you need to do the following:

- 1 Use the Windows search option within the Windows 'Start' menu.
- 2 Search for 'NetMeeting' on your C:\ drive.
- 3 The search utility will find the following:  NetMeeting .
- 4 Click on  NetMeeting using your right mouse button and select: 'Send To → Desktop (create shortcut)'.

### To initiate a video chat:

- 1 Double click on the 'NetMeeting Shortcut' on your PC's Desktop to start a NetMeeting session.
- 2 Click on 'Help' → 'About NetMeeting' and find out your local IP address.  
You can ask your meeting partner to find out his/her IP address in the same way.



- 3 Click the telephone icon.



- 4 In the 'Place A Call' dialogue box, fill in your partner's IP address in 'To:'
- 5 Click on 'Call' and wait for response.

### Note!

*If you or your partner are/is behind a firewall or is using a proxy server (common for office users), please refer to NetMeeting Help about detail solutions.*



**To respond to an incoming call:**

- 1** You can choose 'Automatically Accept Calls' or you can accept manually.
- 2** When the 'Incoming Call' dialogue box appears, click on 'Accept'.

**Notes!**

- Only two computers in a NetMeeting conference can use audio for communication. All other participants must communicate through other options, like Chat or the shared Whiteboard.
- You can also initiate a video conference with more than one partner. Please read Help in Microsoft® NetMeeting.

---

**Making snapshots using Windows® XP**

You can use Microsoft® Windows® XP to make snapshots with your Philips SPC 300NC PC Camera.

If you need additional support, please refer to the 'Help' topics of Microsoft® Windows® XP. Search for 'Get picture'.

6. Technical specifications

Sensor .....	QVGA CMOS
Video resolution (Max.) .....	QVGA (320 × 240)
Image resolution (Max.) .....	VGA (640 × 480)
Illumination .....	< 10 lux
Integrated lens .....	F=2.8
Data format .....	I420, IYUV
Interfacing .....	USB 2.0 compatible (2.1m USB cable)
Microphone .....	External microphone provided
Power .....	Supplied via USB cable
Voltage requirements .....	5V (— — —), 0.5A

## 7. Important information

### Disclaimer

Philips makes no warranty of any kind with regard to this material, including, but not limited to, the implied warranties of merchantability and fitness for a particular purpose. Philips assumes no responsibility for any error that may appear in this document. Philips makes no commitment to update nor to keep current the information contained in this document.

### FCC compliance

This device complies with Part 15 of the FCC Rules. Operation is subject to the following two conditions:

- 1 this device may not cause harmful interference, and
- 2 this device must accept any interference received, including interference that may cause undesired operation.

### Note!

*This equipment has been tested and found to comply with the limits for a Class B digital device, pursuant to Part 15 of the FCC Rules. These limits are designed to provide reasonable protection against harmful interference in a residential installation. This equipment generates, uses and can radiate radio frequency energy and, if not installed and used in accordance with the instructions, may cause harmful interference to radio communications. However, there is no guarantee that interference will not occur in a particular installation. If this equipment does cause harmful interference to radio or television reception, which can be determined by turning the equipment off and on, the user is encouraged to try to correct the interference by one or more of the following measures:*

- *Reorient or relocate the receiving antenna.*
- *Increase the separation between the equipment and receiver.*
- *Connect the equipment to an outlet on a circuit different from that to which the receiver is connected.*
- *Consult the dealer or an experienced radio/TV technician for help.*

Any unauthorized modification to this equipment could result in the revocation of the authorization to operate the equipment.

---

## Environmental information



All redundant packaging has been omitted. We have done our utmost to make the packaging easily separable into four materials: cardboard, polystyrene foam, PET and polyethylene. Your set consists of materials which can be recycled if disassembled by a specialized company. Please observe the local regulations regarding the disposal of packaging, exhausted batteries and old equipment.



### **WARNING**

Plastic bags can be dangerous. To avoid danger of suffocation, keep this bag away from babies and small children.

---

## System requirements

- Microsoft® Windows® 98SE/2000/ME or XP;
- Pentium® III, 500 Mhz or equivalent;
- 128MB RAM and 100 MB free hard disk space;
- One free USB port and CD-ROM or DVD drive.

---

## Disclaimer of warranty

The software on the CD-ROM supplied is sold 'as is' and without warranties whether expressed or implied. Because of the various software and hardware environments into which this program may be put, no warranty of fitness for a particular purpose is offered.

---

## Limitations of damages

The vendor will not be liable for any indirect, special, incidental or consequential damages (including damages for loss of business, loss of profits, or the like), whether based on breach of contract, tort (including negligence), product liability or otherwise, even if the vendor or its representatives have been advised of the possibility of such damages and even if a remedy set forth herein is found to have failed its essential purpose.

## 8. Helpline

### Need Help?

If you have any questions about the Philips SPC 300NC Camera, please contact our helpline for assistance! You can find the number in the list below.

Before you call, please read this manual carefully. You will be able to solve most of your problems.

The model number of the camera is SPC 300NC.

Date of purchase:    \_\_\_\_ / \_\_\_\_ / \_\_\_\_  
                                 day    /month /year

#### **België/ Belgien/ Belgique**

02-275-0701

#### **Danmark**

35-25-8761

#### **Deutschland**

0696-698-4712

#### **España**

09-17-45-62-46

#### **France**

03-8717-0033

#### **Έλληνας**

00800 3122 1223

#### **Ireland**

01-601-1161

#### **Italia**

02-48-27-11-53

#### **Luxemburg/ Luxembourg**

408-433-5501

#### **Nederland**

053-482-9800

#### **Norge**

22-70-82-50

#### **Österreich**

01-546-575-603

#### **Portugal**

0800-831-363

#### **Schweiz/ Suisse/ Svizzera**

02-23-10-21-16

#### **Suomi**

09-2290-1908

#### **Sverige**

08-632-0016

#### **UK (United Kingdom)**

0207-949-0069

9. Warranty

Guarantee certificate  
Garantiebewijs  
Certificado de garantia  
Garantibevís

Certificat de garantie  
Certificado de garantia  
Εγγύηση  
Garantibevís

Garantieschein  
Certificato di garanzia  
Garanticertifikat  
Takuutodistus



year warranty  
année garantie  
Jahr Garantie  
jaar garantie  
año garantia  
anno garanzia

χρόνος εγγύηση  
år garanti  
år garanti  
år garanti  
vuosi takuu  
año garantia

Type: **SPC 300NC**

Serial no: \_\_\_\_\_

Date of purchase - Date de la vente - Verkaufsdatum - Aankoopdatum - Fecha de compra - Date d'acquisition -  
Data da aquisição - Ημερομηνία αγοράς - Inköpsdatum - Anskaffelsesdato - Kjøpedato - Oatopäivä -

Dealer's name, address and signature  
Nom, adresse et signature du revendeur  
Name, Anschrift und Unterschrift des Händlers  
Naam, adres en handtekening v.d. handelaar  
Nombre, dirección y firma del distribuidor  
Nome, indirizzo e firma del fornitore

Ονοματεπώνυμο, διεύθυνση και υπογραφή του εμπ. προμηθευτή  
Återförsäljarens namn, adress och signatur  
Forhandlerens navn, adresse og underskrift  
Forhandlerens navn, adresse og underskrift  
Jälleenmyyjän nimi, osoite ja allekirjoitus  
Nome, morada e assinatura da loja

6 month guarantee on rechargeable batteries  
6 mois de garantie sur les piles rechargeables  
6 meses de garantía para las pilas recargables  
6 Monate Garantie auf wiederaufladbare Batterien  
6 maanden garantie op oplaadbare batterijen  
Garanzia di 6 mesi sulle batterie ricaricabili

Pilhas recarregáveis com 6 meses de garantia  
Εγγύηση 6 μηνών σε επαναφορτιζόμενες μπαταρίες  
6 månaders garanti på laddningsbara batterier  
6 månaders garanti på genopladelige batterier  
6 månaders garanti på de oppladbare batteriene  
Ladattavilla akuilla on 6 kuukauden takuu

