



FWM70



PHILIPS

Use this simple and quick guide to get started listening to your favorite music.

DEMO MODE

To turn OFF

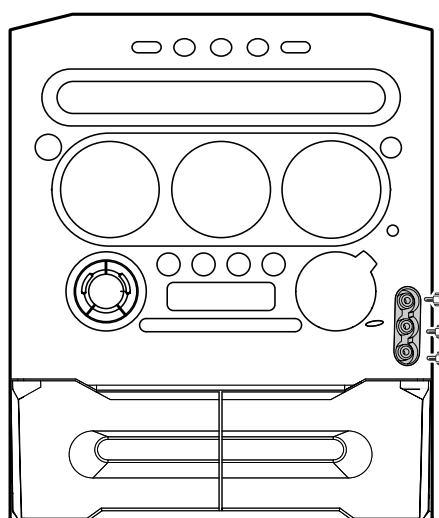
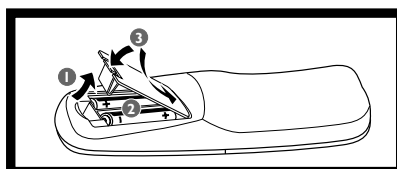
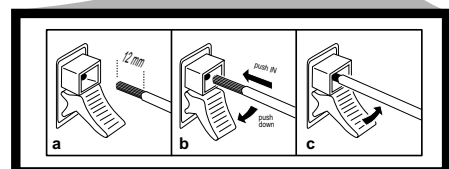
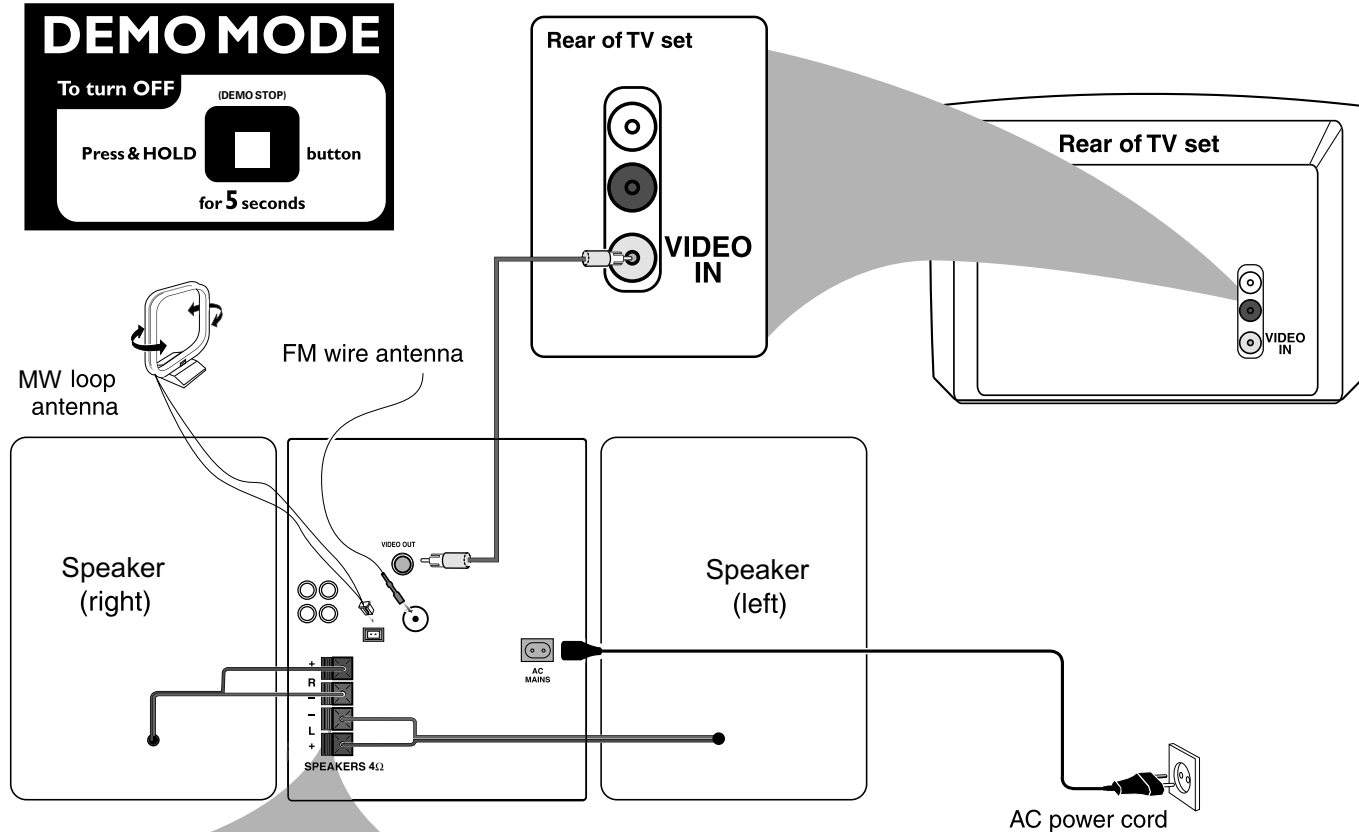
(DEMO STOP)

Press & HOLD

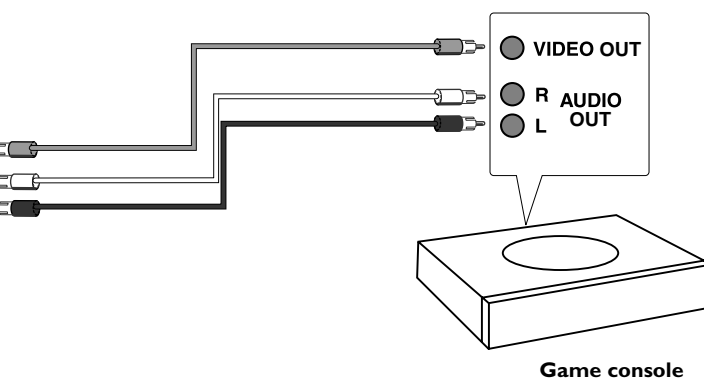


button

for 5 seconds



Front panel

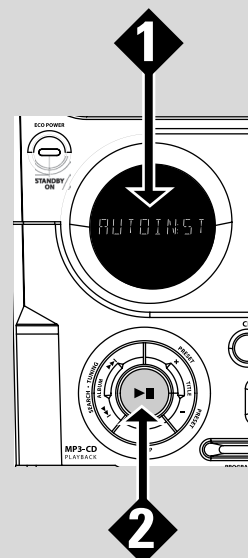


For more detailed instructions, see the following pages in the User Guide.

Gameport Operations	13
Basic Operations	14~15
Disc Operations	16~18
Tuner Operations	19~21
Tape Operations/Recording ...	22~23
Timer Operations	24~25
Troubleshooting	27

A Plug and Play

- 1** When you turn on the mains supply, "AUTO INSTALL - PRESS PLAY" is displayed.
- 2** Press **▶ ||** on the system to start installation.
 - "INSTALL" is displayed, followed by "TUNER" and "AUTO".
 - **PROG** starts flashing.
 - When all the available radio stations are stored or the memory for 40 presets are used, the last preset radio station (or the first available RDS station) will be played.

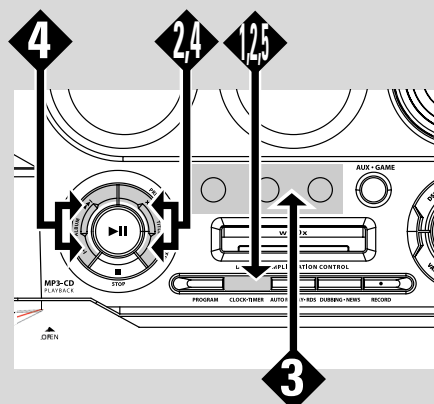


B Timer Operations

- 1** Press and hold **CLK/TIMER** (or **CLOCK•TIMER** on main unit) until "SELECT CLOCK OR TIMER" is displayed.
- 2** Press **-/+** to change the display to "TIMER" and press **CLOCK•TIMER** again to confirm.
- 3** Press **CD** or **TUNER** or **TAPE** to select the wake-up source.
- 4** Press **◀◀** or **▶▶** (for hours) and **-** or **+** (for minutes) repeatedly to set the wake-up time.
- 5** Press **CLOCK•TIMER** to store the setting.

To exit without storing the setting

- Press **■** on the system.



C Loading discs

- 1** Press **OPEN•CLOSE ▲** on the main unit to open the disc trays.
- 2** Load a disc with the label side facing up.
- 3** Press **OPEN•CLOSE ▲** again to close the disc tray.
- 4** Press **▶ ||** to play the CD.

